

O.D.O.T. DISTRICT 2 SURVEY OFFICE (USE ONLY)

| | | |
|-----------------------|--------------------------|------------------------------|
| PERSONNEL | REFERENCE NO. <u>9 B</u> | SHEET <u>18</u> OF <u>56</u> |
| NOTES <u>RHOADES</u> | DATE <u>11/1/23</u> | ROUTE <u>SR 4</u> |
| H.C. <u>AUBLE</u> | WEATHER <u>SUNNY</u> | COUNTY <u>SENECA</u> |
| R.C. <u>MILLER</u> | TEMP. <u>36°</u> | TOWNSHIP <u>VENICE</u> |
| | | SECTION <u>10</u> |
| DWG BY <u>RHOADES</u> | PID <u>101241</u> | T <u>1</u> N R <u>17</u> E |

TYPE MONUMENT MAG/WASHER

ON SURFACE - ~~BELOW~~ ON

OFFSET \odot PAVEMENT 2.2' LT : ~~RT~~

9.4' TO LT EDGE PAVEMENT

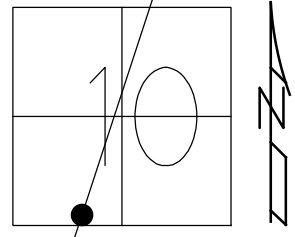
STATION: 228+48.33

HORZ.DATUM: NAD83(2011)

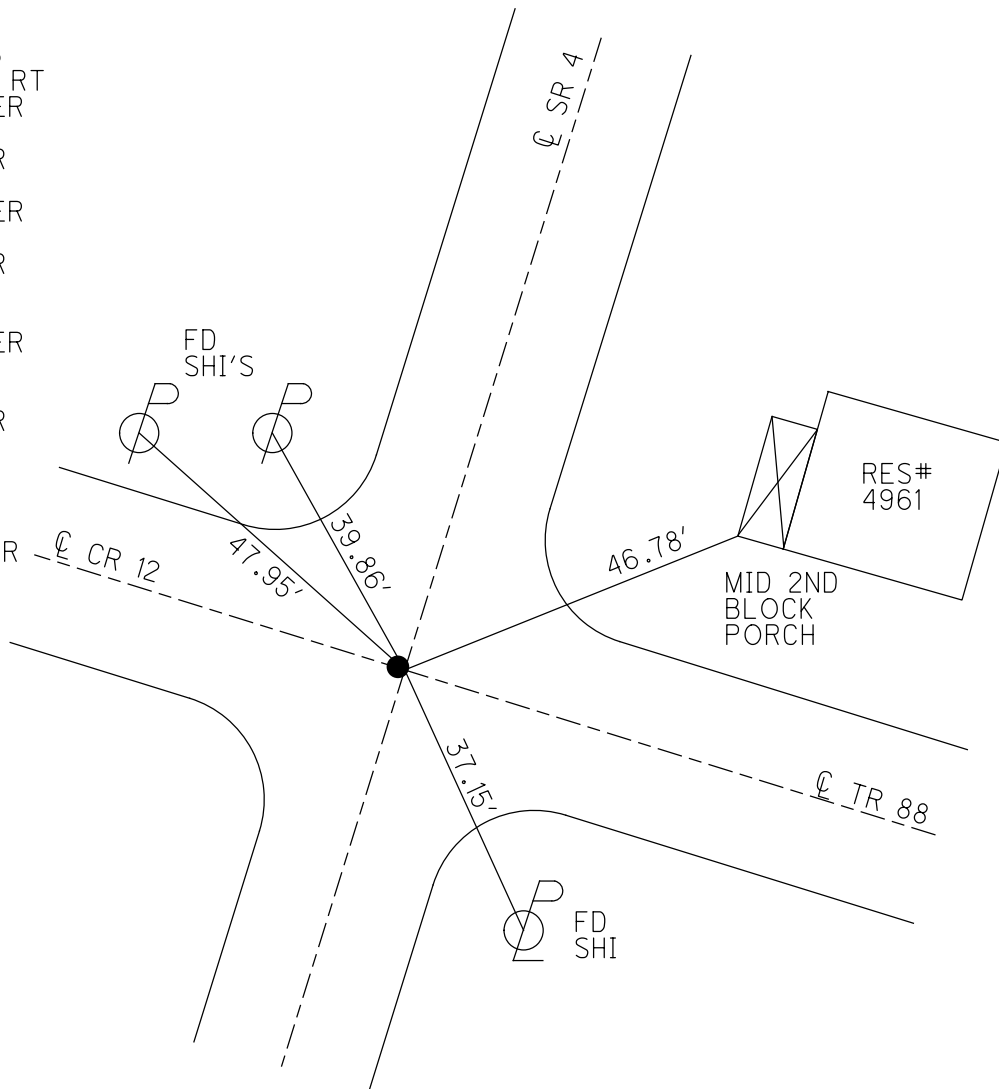
GEOID: NAVD88 2018

GRID: NORTHING: 505059.256

EASTING: 1859975.614



RECORD: P.I.
 STA. 228+53.33
 $\Delta = 02^\circ 06' 12''$ RT
 SET P.K./WASHER
 12/17/74
 FD P.K./WASHER
 3/16/1992
 SET P.K./WASHER
 10/7/1993, RCC
 FD P.K./WASHER
 SV116
 9/15/09
 SET P.K./WASHER
 FIN 116
 10/20/10, KPM
 FD P.K./WASHER
 9/15/21, DSA
 2/8/22, JFO
 REF9B
 7/17/23, TDN
 SET MAG/WASHER
 11/1/23, DSA



O.D.O.T. DISTRICT 2 SURVEY OFFICE (USE ONLY)

PERSONNEL

REFERENCE NO. 9 B

SHEET 18 OF 41

NOTES NIESE

DATE 9/15/21

ROUTE SR 4

H.C. AUBLE

WEATHER OVERCAST

COUNTY SENECA

R.C. NIESE

TEMP. 66°

TOWNSHIP VENICE

SECTION 10

DWG BY RHOADES PID PVTRAIN

T 1 N R 17 E

TYPE MONUMENT P.K./WASHER

ON SURFACE - ~~BELOW~~ ON

OFFSET Q PAVEMENT 1.1' LT : ~~RT~~

9.4' TO LT EDGE PAVEMENT

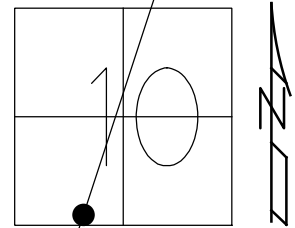
STATION: 228+48.33

HORZ.DATUM: NAD83(2011)

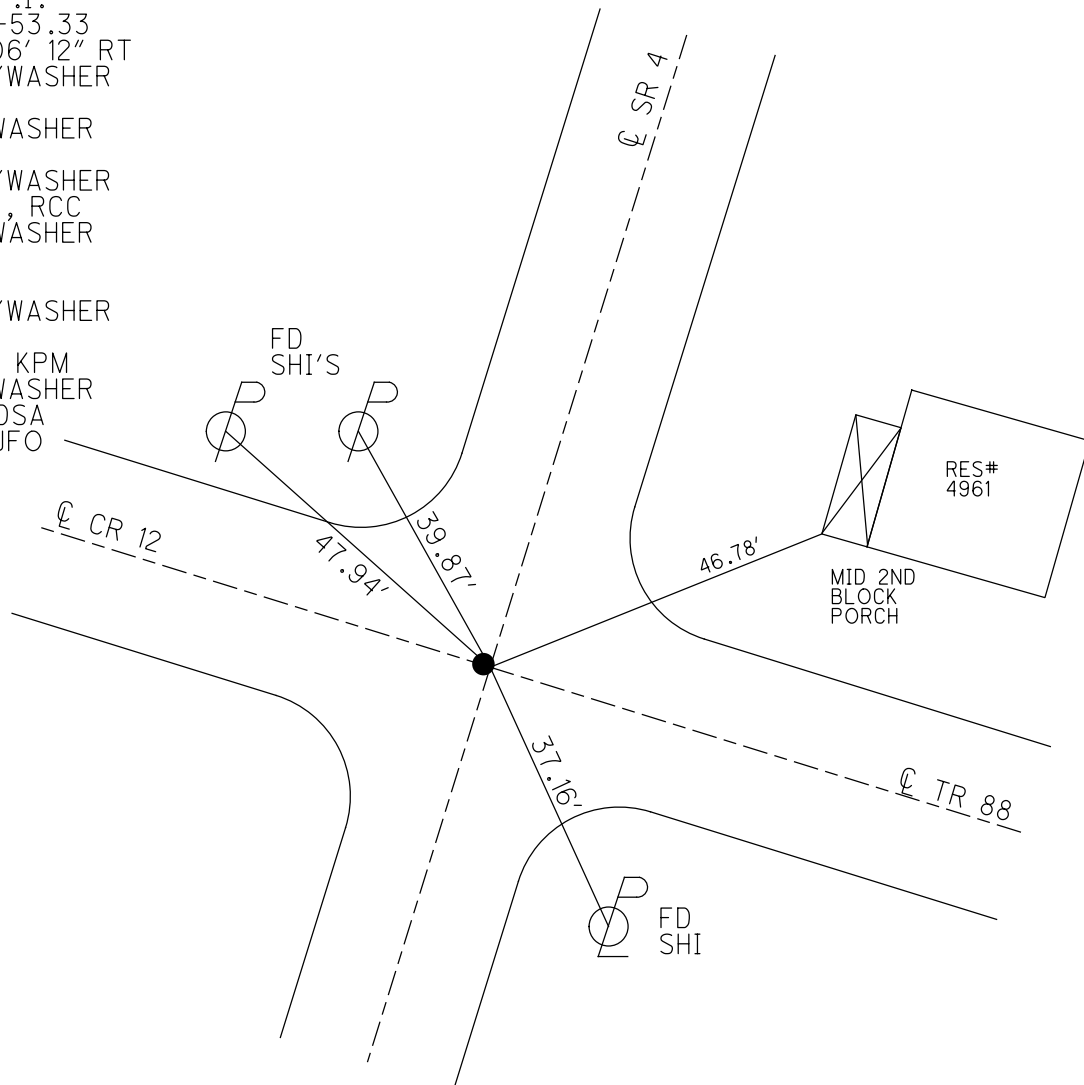
GEOID: NAVD88 2012A

GRID: NORTHING: 505059.238

EASTING: 1859975.573



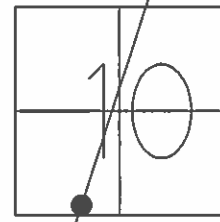
RECORD: P.I.
 STA. 228+53.33
 $\Delta = 02^\circ 06' 12''$ RT
 SET P.K./WASHER
 12/17/74
 FD P.K./WASHER
 3/16/1992
 SET P.K./WASHER
 10/7/1993, RCC
 FD P.K./WASHER
 SV116
 9/15/09
 SET P.K./WASHER
 FIN 116
 10/20/10, KPM
 FD P.K./WASHER
 9/15/21, DSA
 2/8/22, JFO



O.D.O.T. DISTRICT 2 SURVEY OFFICE (USE ONLY)

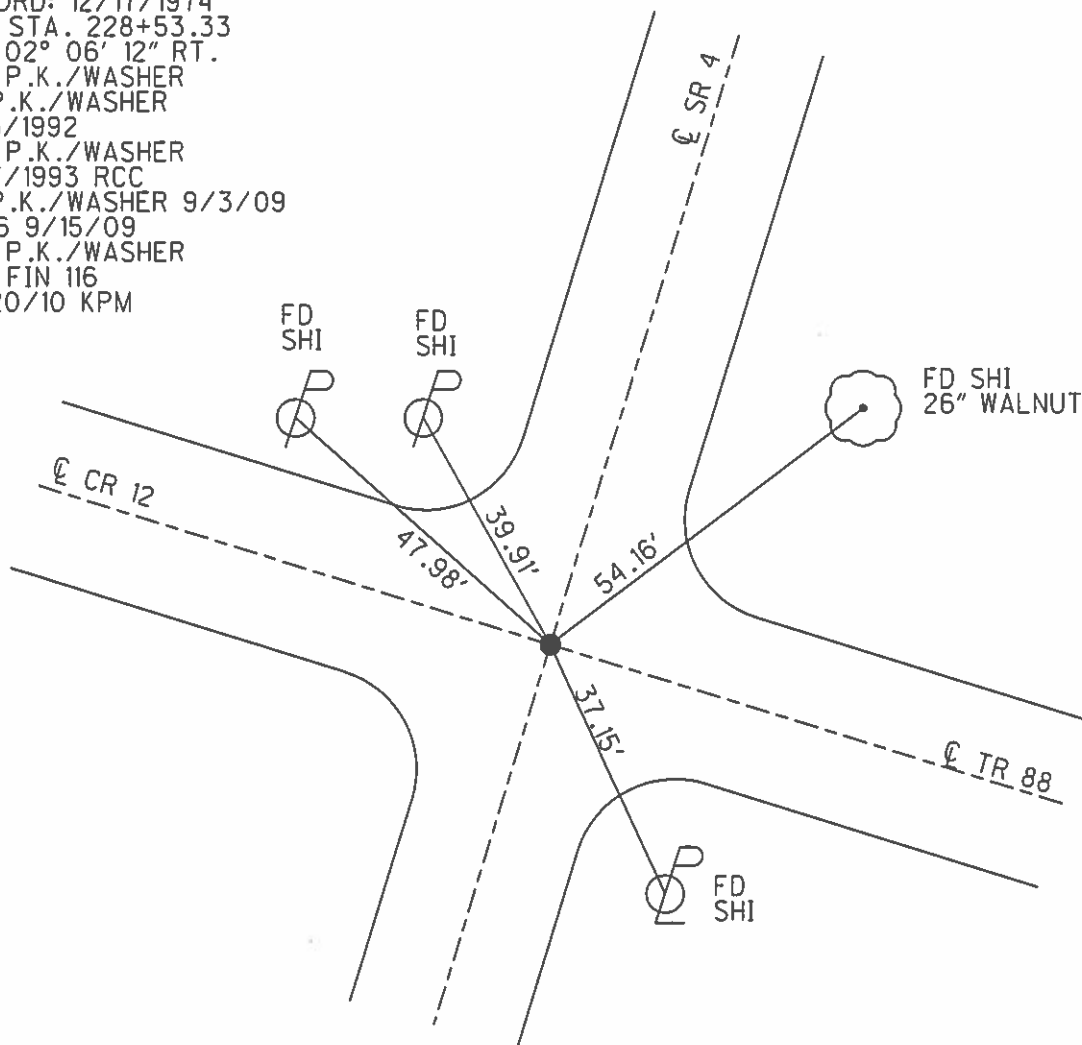
PERSONNEL _____ REFERENCE NO. 9 B SHEET 18 OF 41
 NOTES FINTEL DATE 8/11/10 ROUTE SR 4
 H.C. HARBAUGH WEATHER CLOUDY COUNTY SENECA
 R.C. FINTEL TEMP. 90° TOWNSHIP VENICE
 _____ SECTION 10
 _____ T 1 N R 17 E

TYPE MONUMENT P.K./WASHER
 ON SURFACE - ~~BELOW~~ ON _____
 LEFT - ☉ PAV'T - ~~RIGHT~~ 1.1'
9.4' TO LT. EDGE PAVEMENT
 S.L.M. 228+48.33



GRID: NORTHING: 505059.238 EASTING: 1859975.573

RECORD: 12/17/1974
 P.I. STA. 228+53.33
 $\Delta = 02^{\circ} 06' 12''$ RT.
 SET P.K./WASHER
 FD P.K./WASHER
 3/16/1992
 SET P.K./WASHER
 10/7/1993 RCC
 FD P.K./WASHER 9/3/09
 SV116 9/15/09
 SET P.K./WASHER
 GPS FIN 116
 10/20/10 KPM



O.D.O.T. DISTRICT 2 SURVEY OFFICE

PERSONNEL

REFERENCE NO. 9-B

SHEET 16 OF 50

NOTES CHENEY

H.C. RIPPLE

R.C. BARBOUR

GEYMAN

DATE 7-26-1993

WEATHER FAIR

TEMP. 90°

ROUTE S.R.#4

COUNTY SENECA

TOWNSHIP VENICE

SECTION 10

T IN R 17 E

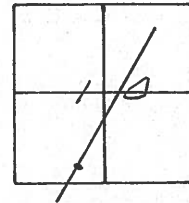
TYPE MONUMENT PK/WASHER

ON SURFACE - ~~BELOW~~ ON

~~LEFT - C~~ PAV'T. - RIGHT ON

11' TO RT. EDGE PAVEMENT

S.L.M. 229+03



RECORD: 12-17-1974

P.I. STA. 228+53.33

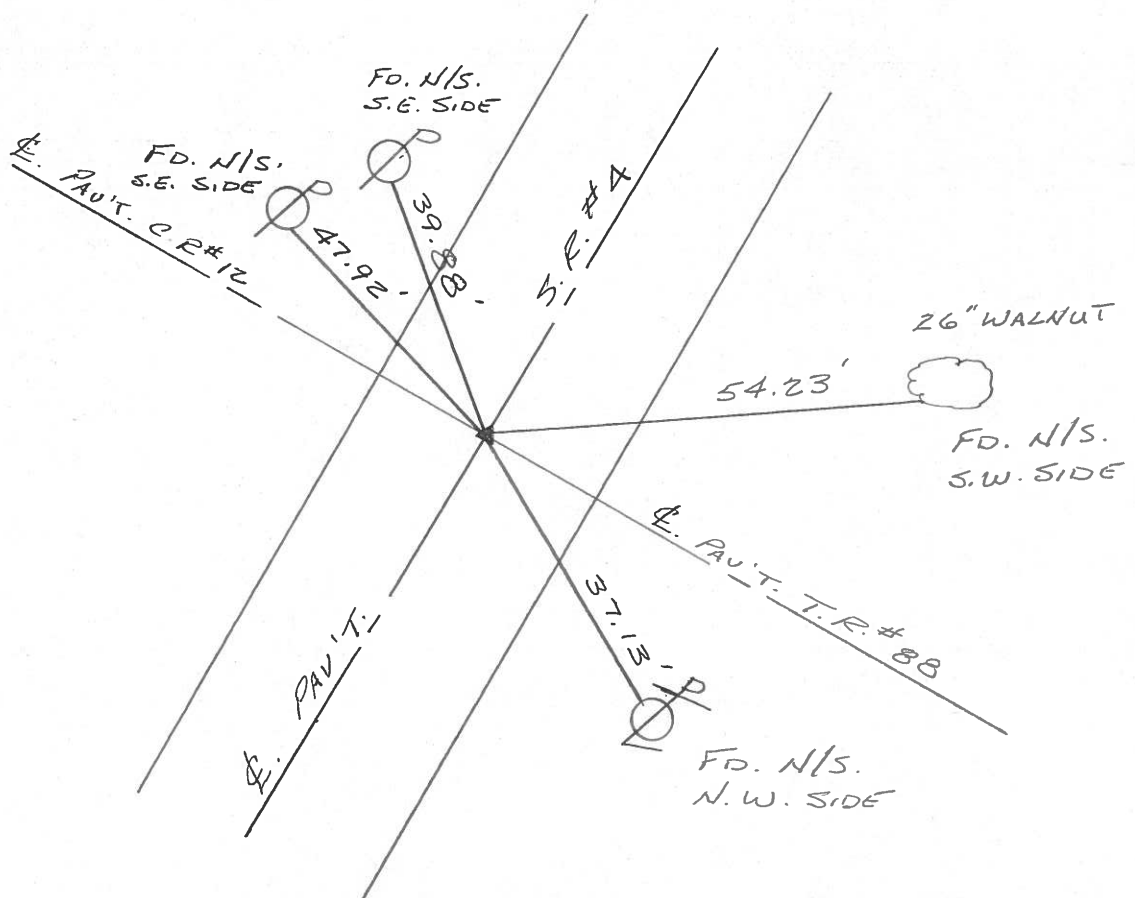
$\Delta = 02^{\circ} 06' 12''$ RT.

SET PK/WASHER

FD. & RE-DRAWN

3-16-1992

SET PK/WASHER
10-7-1993
RCC



O.D.O.T. DISTRICT 2 SURVEY OFFICE

PERSONNEL _____

REFERENCE NO. _____

SHEET 1 OF 4

NOTES VAN DUSEN PC

H.C. LUCE

DATE MARCH 16, 1992

ROUTE 4

R.C. BARNHISELT

WEATHER NICE

COUNTY SENECA

LONG

TEMP. 32° F

TOWNSHIP VENICE

ROMETO

SECTION 10

T. 1 N. 17 E.

TYPE MONUMENT PK

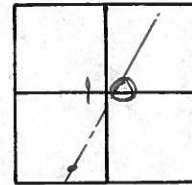
ON SURFACE - BELOW SURFACE

LEFT - & PAV'T. - RIGHT E

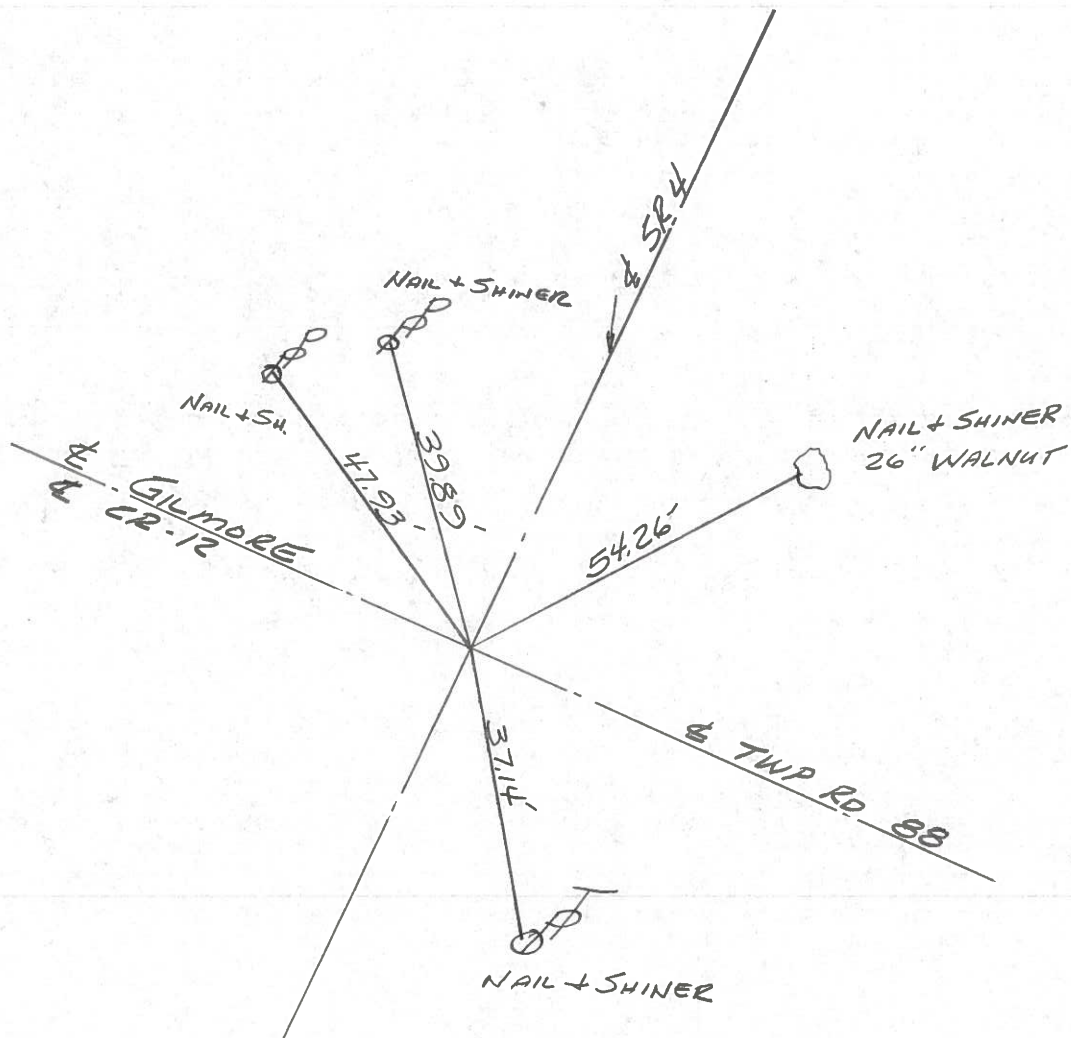
TO EDGE PAVEMENT

S.L.M. 228+53.33

9B



FD. PK NAIL



O.D.O.T. DISTRICT 2 SURVEY OFFICE

PERSONNEL _____

REFERENCE NO. _____

SHEET 1 OF 5

NOTES CHENEY

H.C. VANDUSEN

R.C. LONG

RIPPLE

DATE 9-26-1991

WEATHER SUNNY

TEMP. 55°

ROUTE 4

COUNTY SENECA

TOWNSHIP VENICE

SECTION 10

T1N R18E

TYPE MONUMENT FD. PK/WASHER

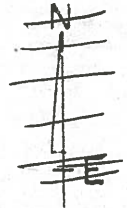
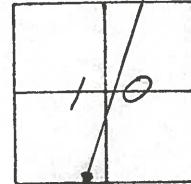
ON SURFACE - BELOW

LEFT - & PAV'T. - RIGHT

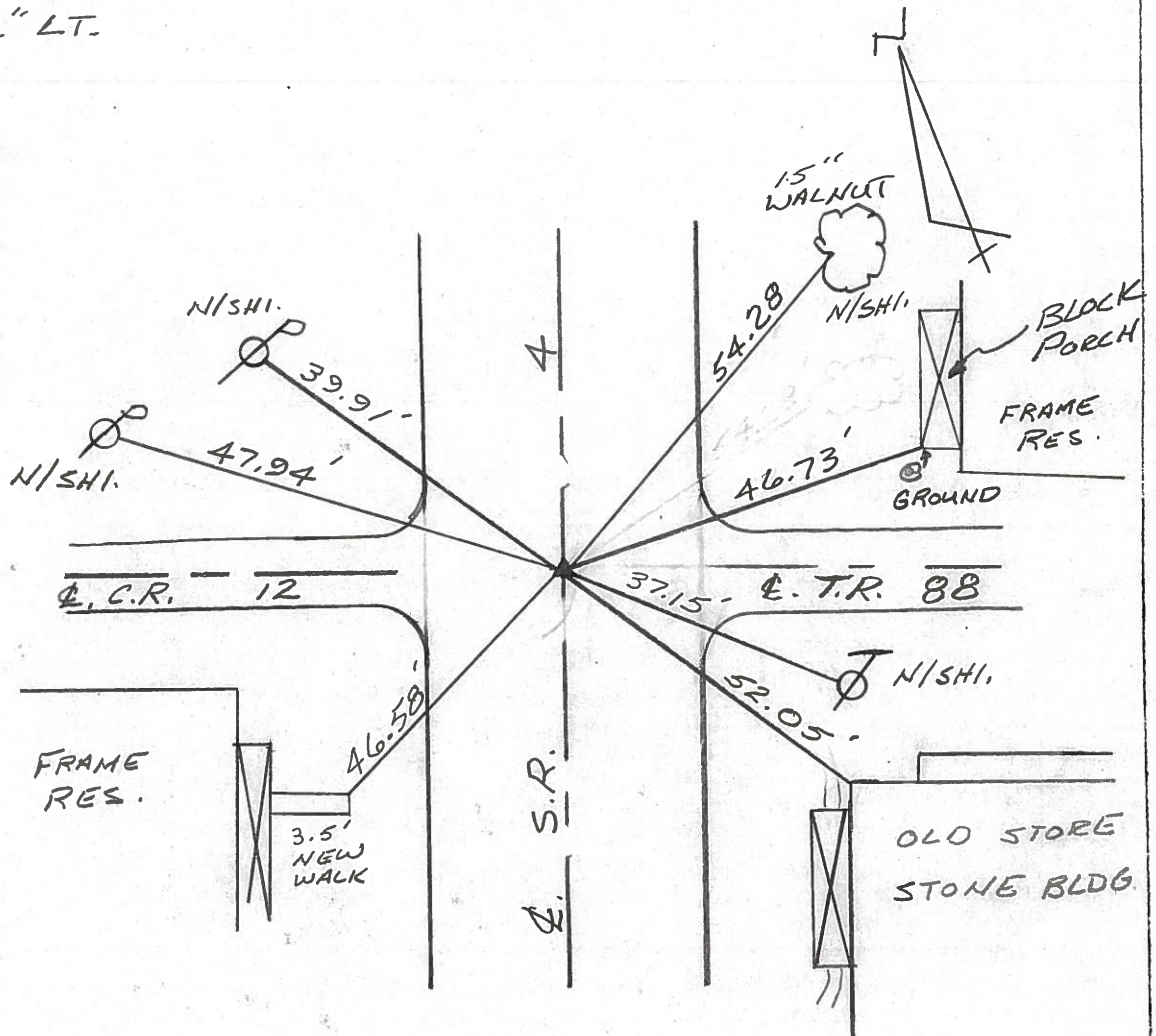
TO EDGE PAVEMENT

S.L.M. 228+53.33

93

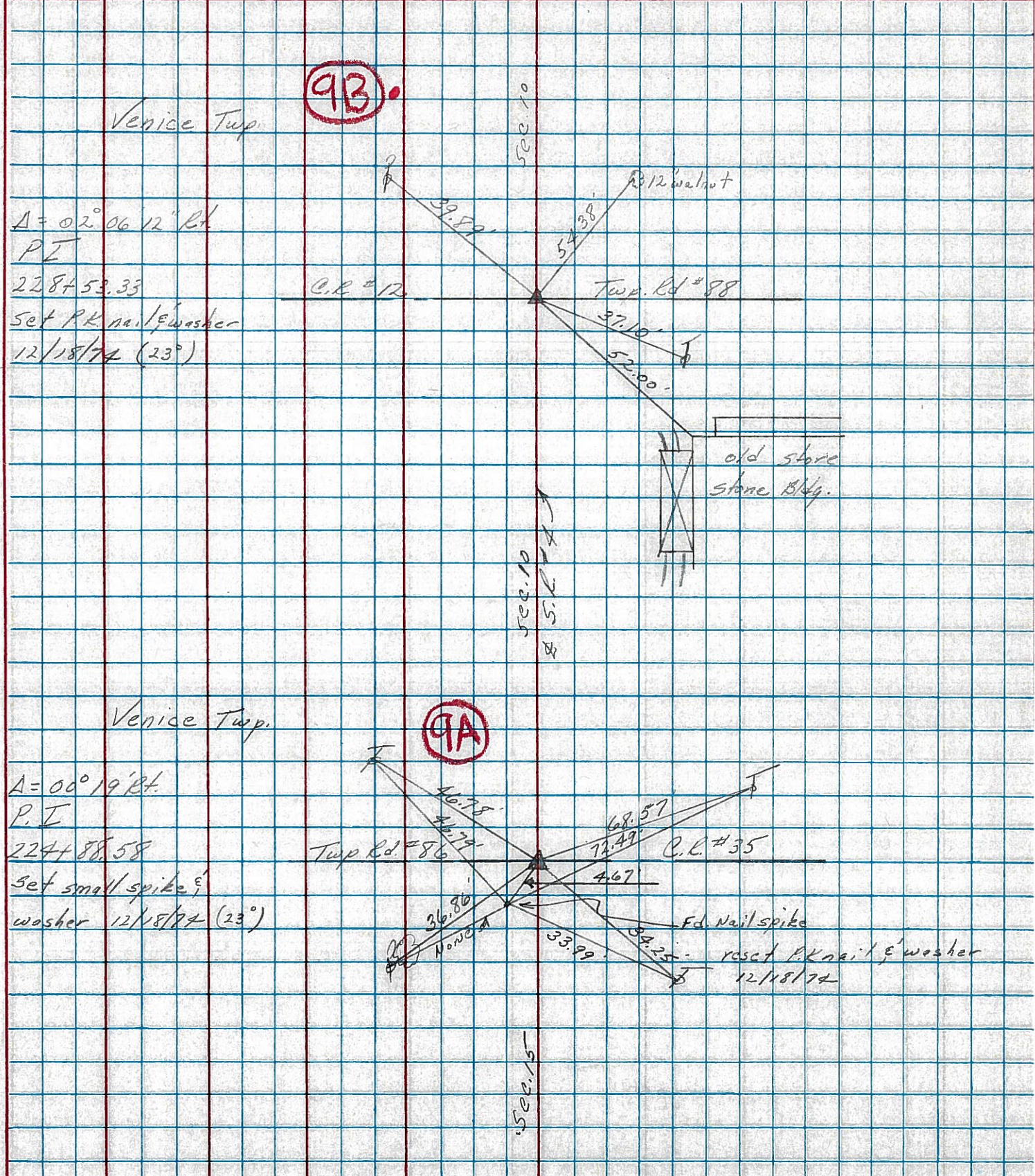


P.I.
 $\Delta = 2^{\circ} - 06' - 12''$ LT.



| PERSONNEL | TITLE | PERSONNEL | TITLE | COUNTY | DATE | WEATHER | TEMP. |
|-----------|-------|-----------|-------|--------------------------------|----------|---------------|-------|
| Cronin | | Schneider | | Seneca | 12/17/74 | overcast-snow | 32° |
| Ash | | Mosser | | S. R. #4 | | | |
| Lipple | | Barbour | | SEC. Crawford Co. Line - North | | | |
| Geyman | | | | | | | |

DESCRIPTION Ties for Control Points JOB NO. _____



PERSONNEL TITLE PERSONNEL TITLE

Schneider _____
 Mosser _____
 Barbour _____
 Redding _____

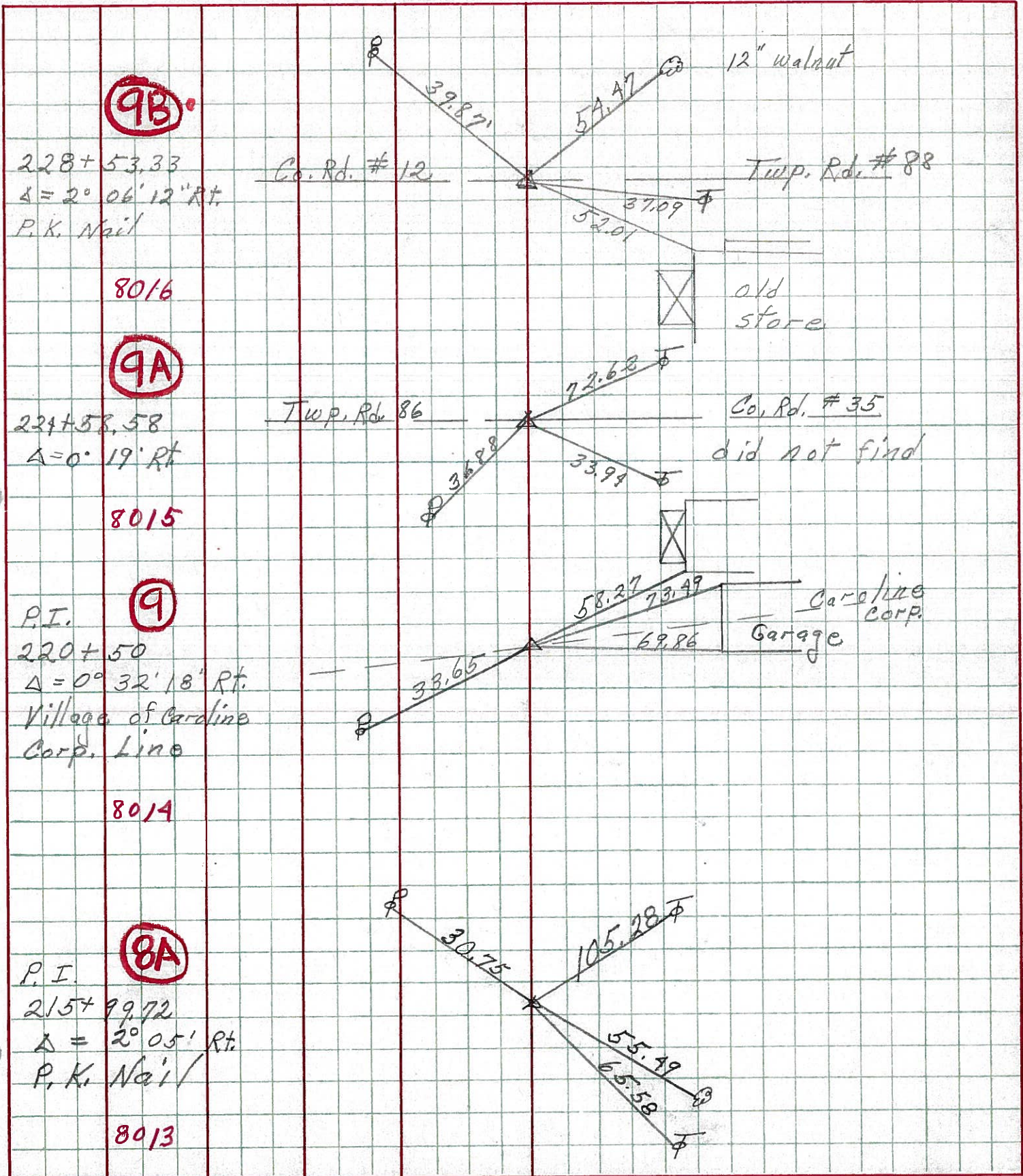
COUNTY Seneca DATE 10-1-68

S. R. 4 WEATHER Fair

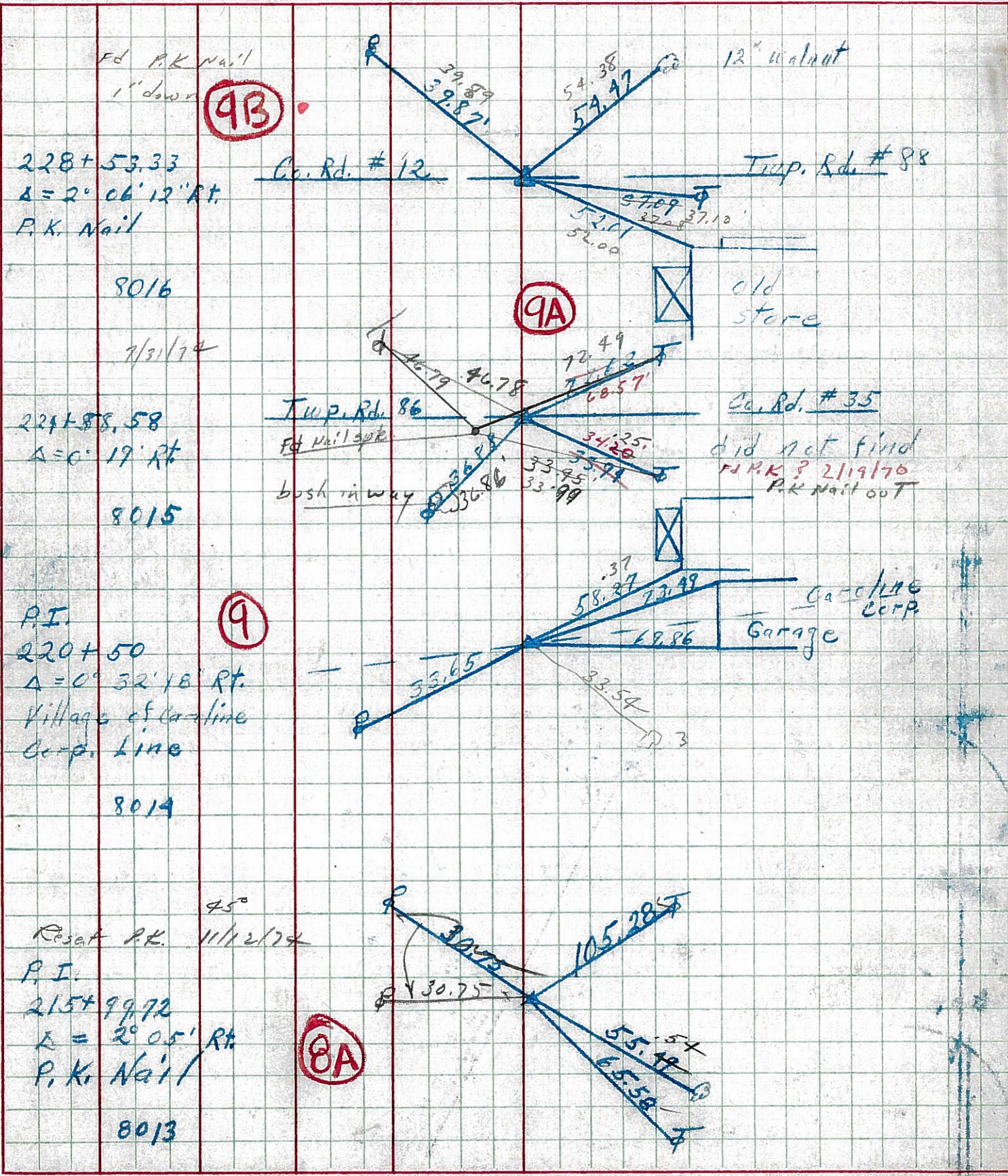
SEC. _____ TEMP. 70°

DESCRIPTION Ties for Control Points JOB NO. _____

LEFT CENTER LINE RIGHT



PERSONNEL TITLE PERSONNEL TITLE COUNTY Seneca DATE 10-1-68
Schneider Potts
Messer S. R. 4 WEATHER Fair
Barbour SEC. _____ TEMP. 70°
Redding DESCRIPTION Ties for Control Points JOB NO. _____



| PERSONNEL | TITLE | PERSONNEL | TITLE | COUNTY | DATE |
|-----------|-------|-----------|-------|---------|---------|
| KraBill | | | | Seneca | |
| Kowaleski | | | | S. R. 4 | WEATHER |
| Brooks | | | | SEC. | TEMP. |

| DESCRIPTION | LEFT | CENTER LINE | RIGHT | JOB NO. |
|-------------|------|-------------|-------|---------|
|-------------|------|-------------|-------|---------|

