

O.D.O.T. DISTRICT 2 SURVEY OFFICE (USE ONLY)

PERSONNEL

REFERENCE NO. 4

SHEET 5 OF 70

NOTES NIESE  
 H.C. AUBLE  
 R.C. NIESE

DATE 8/31/21  
 WEATHER SUNNY  
 TEMP. 80°

ROUTE SR 12  
 COUNTY SENECA  
 TOWNSHIP JACKSON  
 SECTION 28  
 T 3 N R 13 E

DWG BY RHOADES PID PVTRAIN

TYPE MONUMENT MAG/WASHER

ON SURFACE - ~~BELOW~~ ON

OFFSET ☉ PAVEMENT 1.2' LT : ~~RT~~  
9.6' TO LT EDGE PAVEMENT

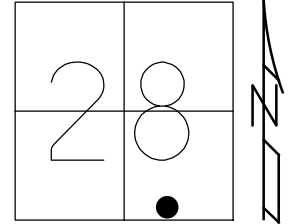
STATION: 211+12

HORIZ.DATUM: NAD83 2011

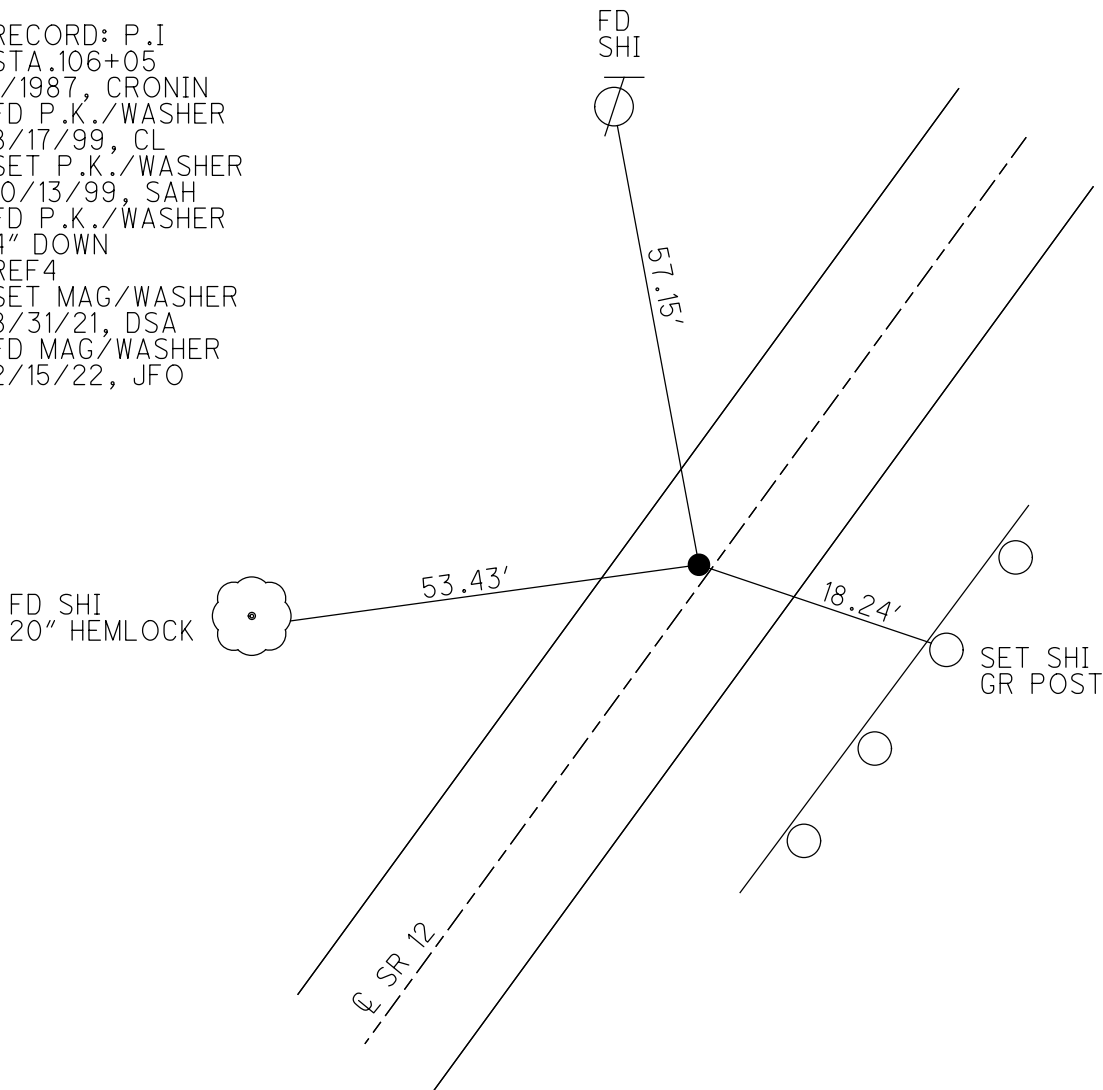
GEOID: NAVD88 2018

GRID: NORTHING: 5532210.005

EASTING: 1729624.431



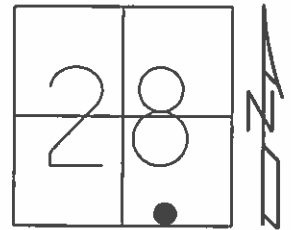
RECORD: P.I  
 STA.106+05  
 1/1987, CRONIN  
 FD P.K./WASHER  
 8/17/99, CL  
 SET P.K./WASHER  
 10/13/99, SAH  
 FD P.K./WASHER  
 4" DOWN  
 REF4  
 SET MAG/WASHER  
 8/31/21, DSA  
 FD MAG/WASHER  
 2/15/22, JFO



O.D.O.T. DISTRICT 2 SURVEY OFFICE (USE ONLY)

PERSONNEL	REFERENCE NO.	<u>4</u>	SHEET	<u>5</u>	OF	<u>70</u>
NOTES	<u>LOEHRKE</u>	DATE	<u>08-17-99</u>	ROUTE	<u>SR 12</u>	
H.C.	<u>VAN DUSEN</u>	WEATHER	<u>FAIR</u>	COUNTY	<u>SENECA</u>	
R.C.	<u>ROUSOS</u>	TEMP.	<u>74°</u>	TOWNSHIP	<u>JACKSON</u>	
				SECTION	<u>28</u>	
				T	<u>3</u>	R
					<u>N</u>	<u>13</u>
					<u>E</u>	

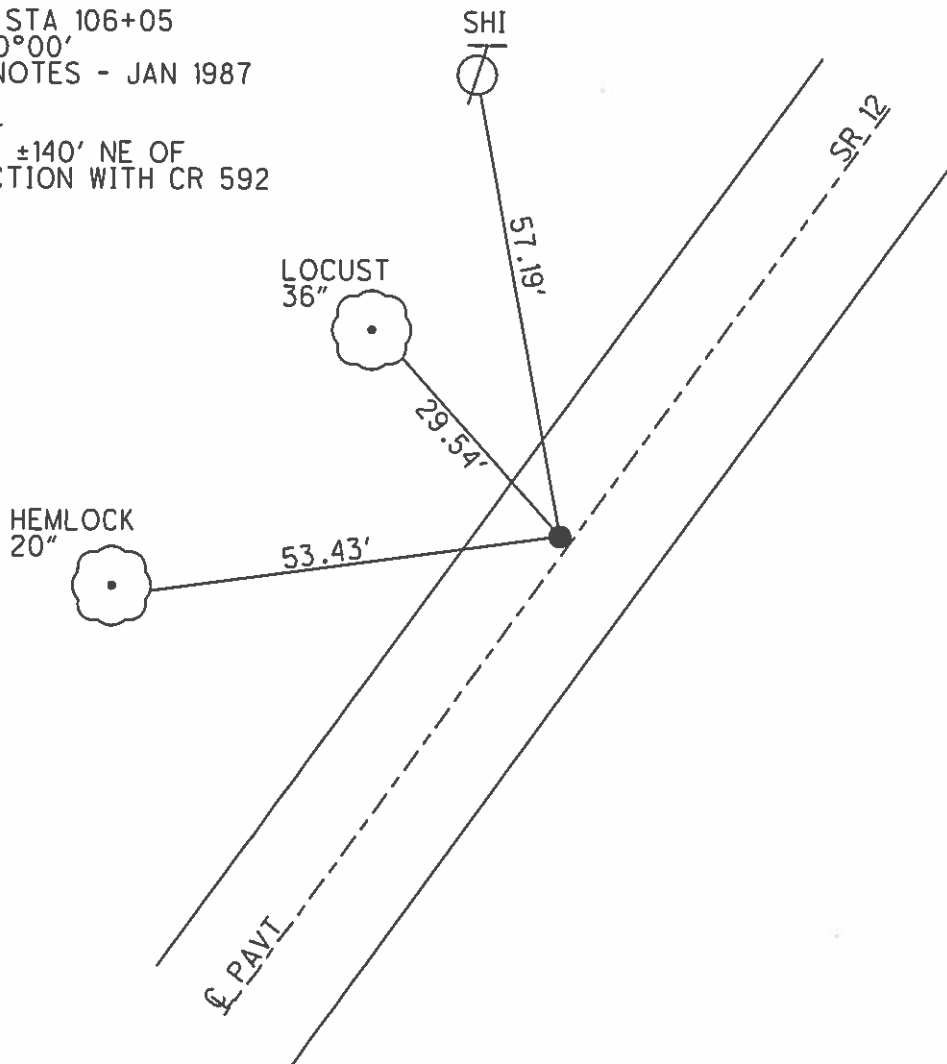
TYPE MONUMENT \_\_\_\_\_ PK/WASHER \_\_\_\_\_  
 ON SURFACE - BELOW \_\_\_\_\_ ON \_\_\_\_\_  
 LEFT - ℄ PAV'T - RIGHT \_\_\_\_\_ 1.2' \_\_\_\_\_  
9.6' TO LT EDGE PAVEMENT  
 S.L.M. \_\_\_\_\_ 211+13 \_\_\_\_\_  
 GRID: NORTHING: \_\_\_\_\_ EASTING: \_\_\_\_\_



10-13-99 SET PK/WASHER, SAH

RECORD: STA 106+05  
 P.I. =  $\pm 00^{\circ}00'$   
 CRONIN NOTES - JAN 1987

- NOTE -  
 POINT IS  $\pm 140'$  NE OF  
 INTERSECTION WITH CR 592



O.D.O.T. DISTRICT 2 SURVEY OFFICE

PERSONNEL

REFERENCE NO. 4

SHEET 3 OF 52

NOTES LOEHRKE

H.C. VAN DUSEN

R.C. ROUSOS

DATE 8-17-99

WEATHER FAIR

TEMP. +74

ROUTE S.R.12

COUNTY Seneca

TOWNSHIP Jackson

SECTION 28

T3 NR13 E

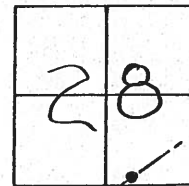
TYPE MONUMENT P.K/WASHER

ON SURFACE - ~~BELOW~~ Yes

LEFT- ~~& PAV'T. - RIGHT~~ 1.2' Lt

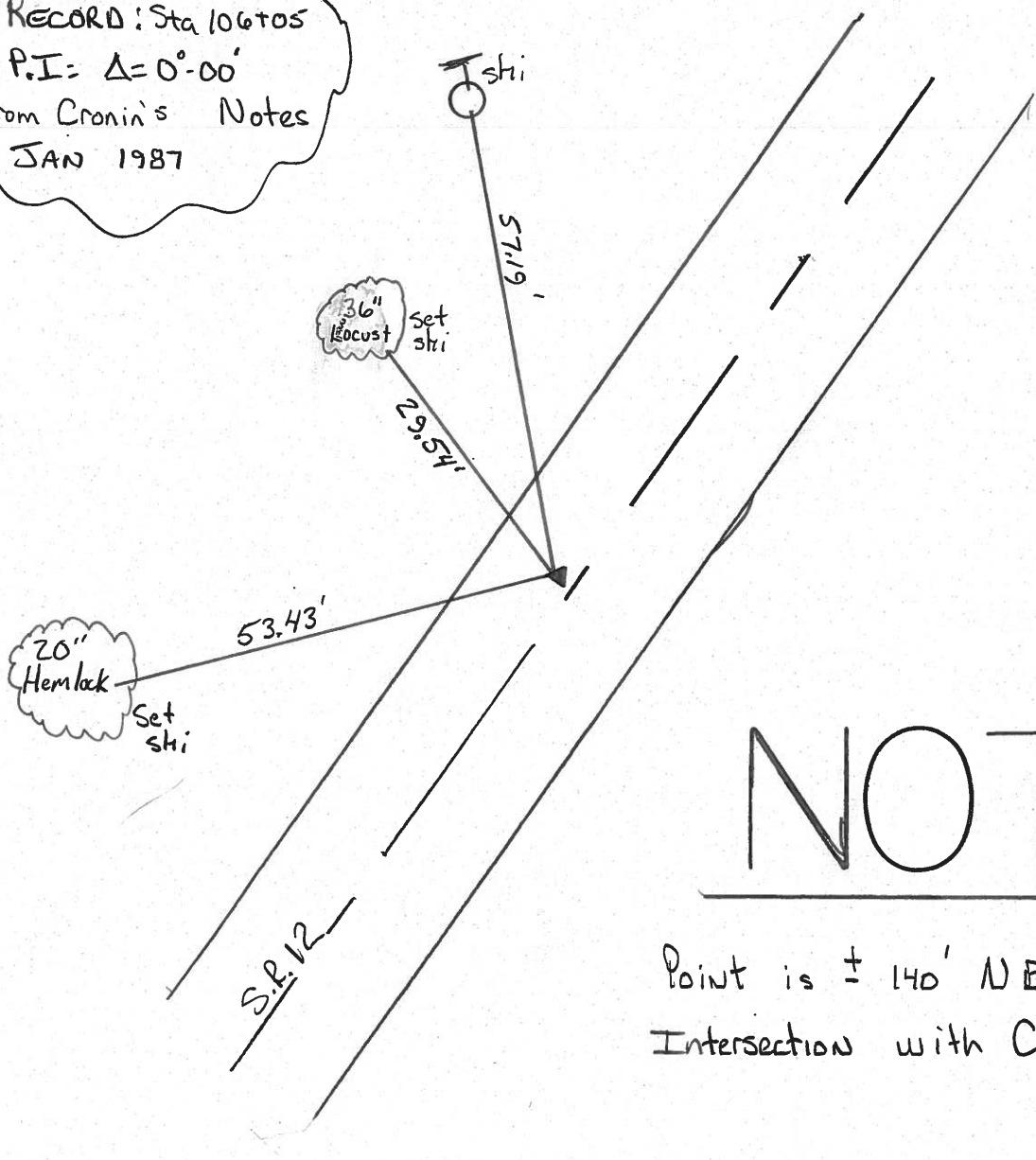
9.6 TO Lt EDGE PAVEMENT

S.L.M. 211+13



RECORD: Sta 106+05  
P.I. = Δ = 0°-00'  
From Cronin's Notes  
JAN 1987

Set PK/W  
10-13-99  
SAH



NOTE

Point is ± 140' NE of  
Intersection with C.R. 592

# O.D.O.T. DISTRICT 2 SURVEY OFFICE

PERSONNEL \_\_\_\_\_

REFERENCE NO. 4

SHEET 3 OF \_\_\_\_\_

NOTES Cronin

DRAWN 1/22/87

H.C. Ripple

DATE 1/09/87

R.C. Geyman

WEATHER overcast

Barbour

TEMP. 27°

ROUTE #12

COUNTY Seneca

TOWNSHIP Jackson

SECTION 28

T 3 N R 13 E

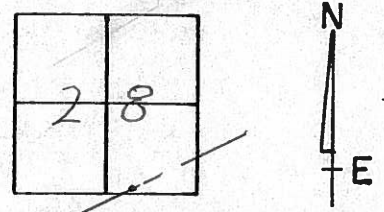
TYPE MONUMENT PK, washer

ON SURFACE - BELOW on surface

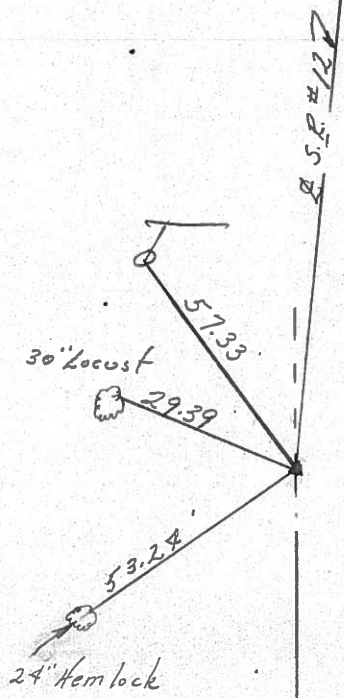
LEFT - ¢ PAV'T. - RIGHT 1' 2" & Pav't.

TO \_\_\_\_\_ EDGE PAVEMENT

S.L.M. \_\_\_\_\_



P.I. Δ = 00°  
106105  
P.K. washer at top same  
atop mine spike



S.P. #127

PERSONNEL TITLE PERSONNEL TITLE

COUNTY Seneca DATE 10-10-72

S. R. 12 WEATHER Fair

SEC. 32 Jackson Twp. TEMP. 50°

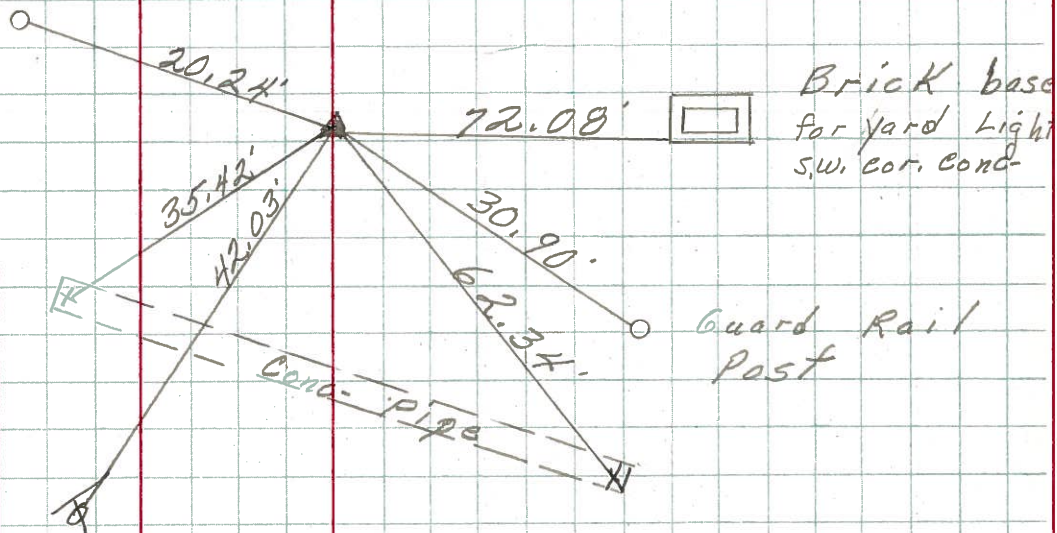
DESCRIPTION Fosteria Corp. to San. Co. Line JOB NO.

LEFT CENTER LINE RIGHT

Guard Rail Post

Sta. 109+05  
Fd. R.R. spk.  
on top on & R/W  
 $\Delta = 0^\circ 17' Lt.$

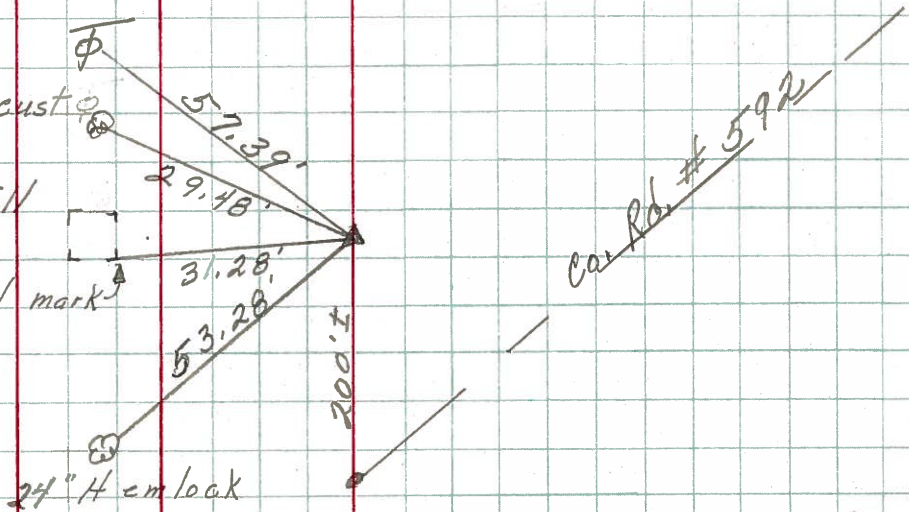
5



24" Locust

Sta. 106+05 Windmill  
Fd. small spk. Post  
on top on & R/W chisel mark  
 $\Delta = 0^\circ 28' Rt.$

4



PERSONNEL TITLE PERSONNEL TITLE  
 Schneider \_\_\_\_\_  
 Barbour \_\_\_\_\_  
 Redding \_\_\_\_\_  
 Potts \_\_\_\_\_

COUNTY Seneca DATE 10-8-68  
 S. R. 12 WEATHER Fair  
 SEC. Fostoria Corp to San. Co. Line TEMP. 70°

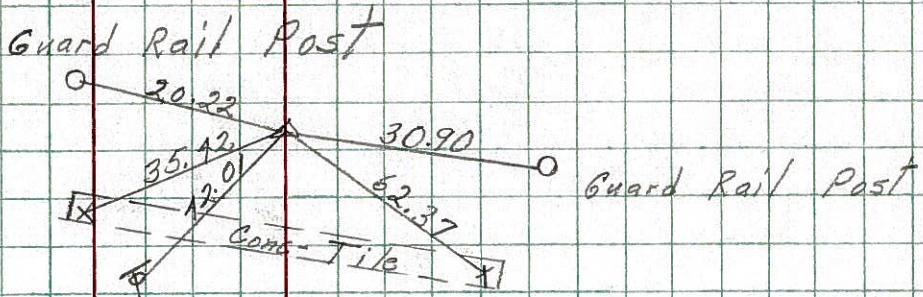
DESCRIPTION Ties for Control Points JOB NO. \_\_\_\_\_  
 LEFT CENTER LINE RIGHT

5

109+05  
 Fd. small spk.  
 on top  
 $\Delta = 0^\circ 17' Lt.$

8053

24" Locust

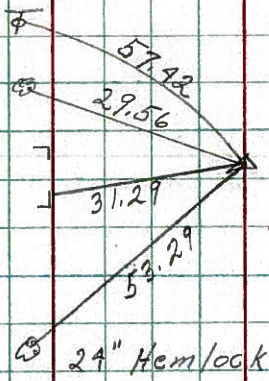


4

106+05  
 Fd. small spk.  
 on top  
 $\Delta = 0^\circ 28' Rt.$

8052

windmill post  
 chisel mark

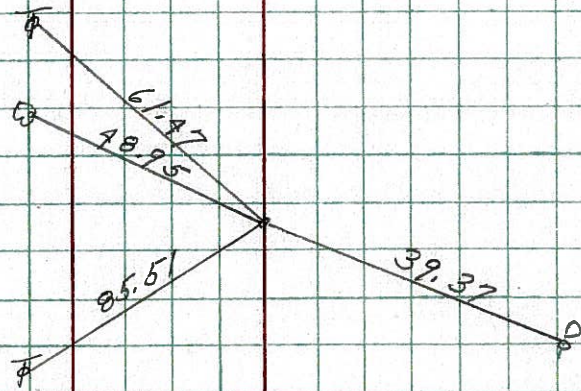


3

85+00  
 Fd. small spk. on top

8051

14" Willow

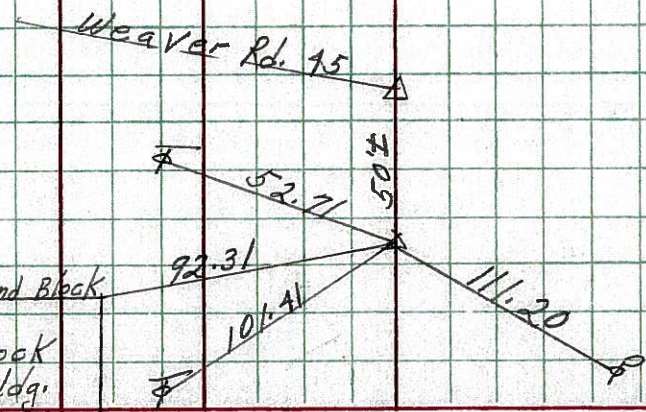


1

61+00  
 Fd. spk. on top

8050

Top 2nd Block  
 Block Bldg.



PERSONNEL TITLE PERSONNEL TITLE

COUNTY Seneca

DATE

S. R. 12-113

WEATHER

SEC. 088

TEMP.

DESCRIPTION

LEFT

CENTER LINE

RIGHT

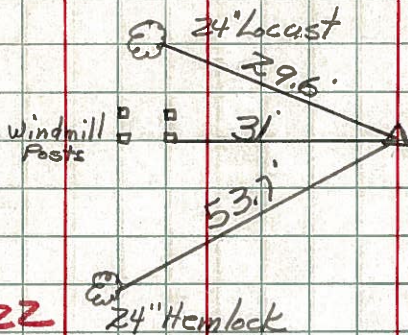
JOB NO.

4

Sta. 106+05

$\Delta = 0^\circ - 28' E$

Iron pin on E of R/W



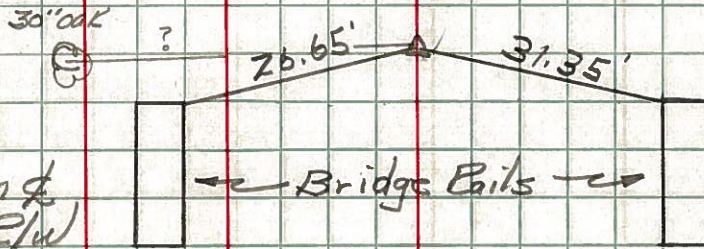
5

Sta. 109+05

$\Delta = 0^\circ - 17' Lt.$

Iron pin on E of R/W

#423



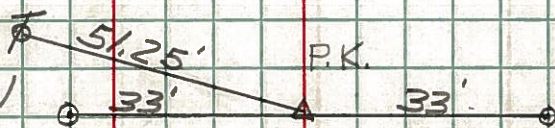
6

Sta. 120+00

Iron pin on E of R/W

#424

End Sec. F. Start Sec. F.



Sta. 169+79.99

P.K. Iron pin on E of R/W

#425

