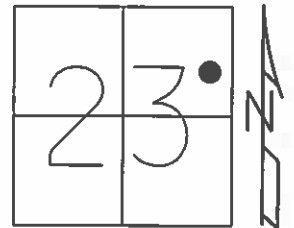


O.D.O.T. DISTRICT 2 SURVEY OFFICE (USE ONLY)

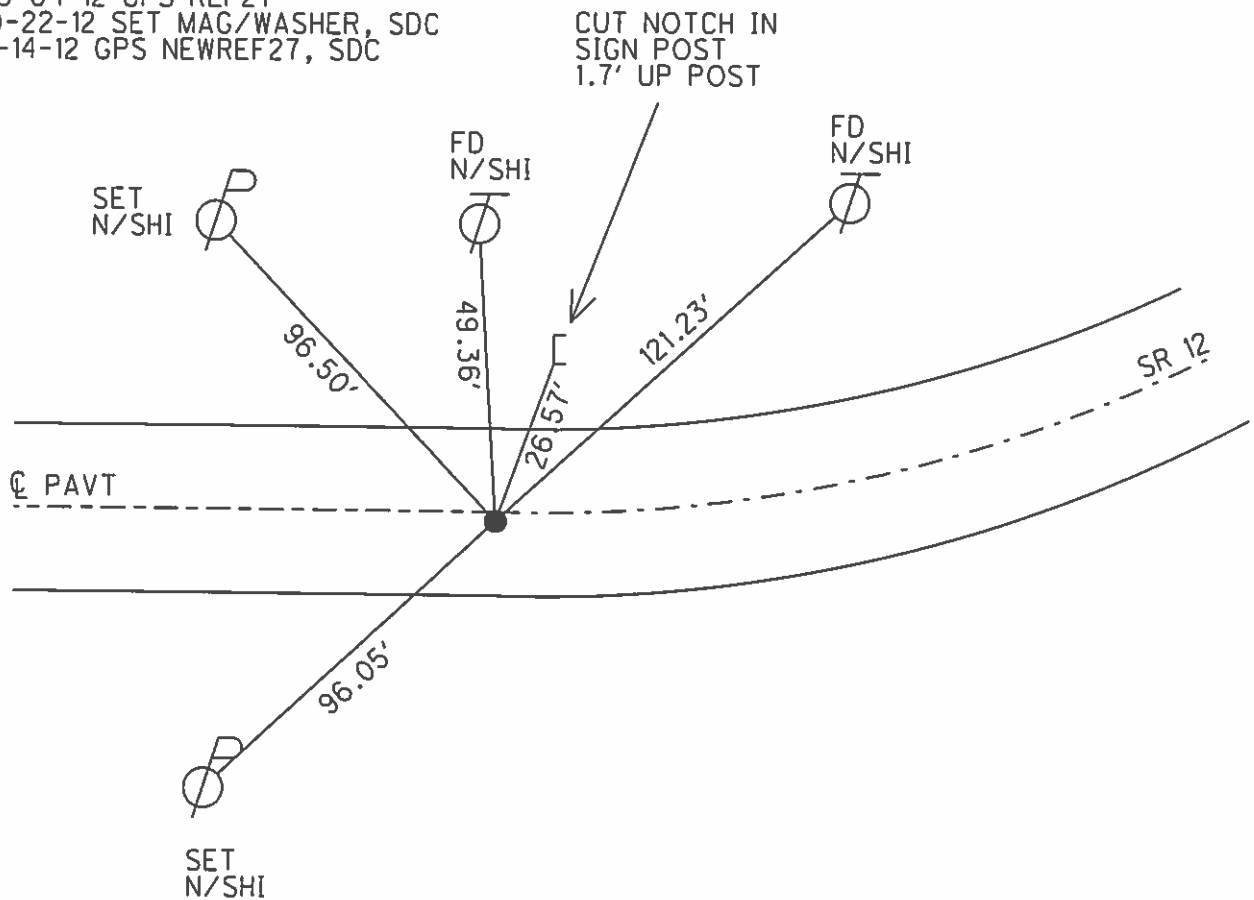
PERSONNEL _____ REFERENCE NO. 27 SHEET 29 OF 70
 NOTES HUSS DATE 05-21-12 ROUTE SR 12
 H.C. HUSS WEATHER FAIR COUNTY SENECA
 R.C. CANTERBURY TEMP. 85° TOWNSHIP JACKSON
 _____ SECTION 23
 _____ T 3 N R 13 E

TYPE MONUMENT _____ PK/WASHER _____
 ON SURFACE - BELOW _____ ON _____
 LEFT - ℄ PAV'T - RIGHT 0.3'
12.3' TO RT EDGE PAVEMENT
 S.L.M. 366+36



GRID: NORTHING: 561964.588 EASTING: 1741847.993

RECORD: T.S.
 250+65.89
 PK/WASHER ATOP SAME
 ATOP MINE SPIKE
 10-14-99 SET PK/WASHER, SAH
 06-04-12 GPS REF27
 10-22-12 SET MAG/WASHER, SDC
 11-14-12 GPS NEWREF27, SDC



O.D.O.T. DISTRICT 2 SURVEY OFFICE

PERSONNEL _____

REFERENCE NO. 27

SHEET 22 OF 52

NOTES Canterbury

H.C. Rousos

R.C. Barnhisel

DATE 8-20-99

WEATHER Fair

TEMP. +85°F

ROUTE 12

COUNTY Seneca

TOWNSHIP Jackson

SECTION 23

T 3 N R 13 E

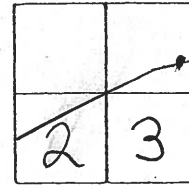
TYPE MONUMENT PK/w

ON SURFACE - ~~Below~~ On Surface

~~Right~~ RIGHT 0.3' Rt. E

12.3' TO Rt. EDGE PAVEMENT

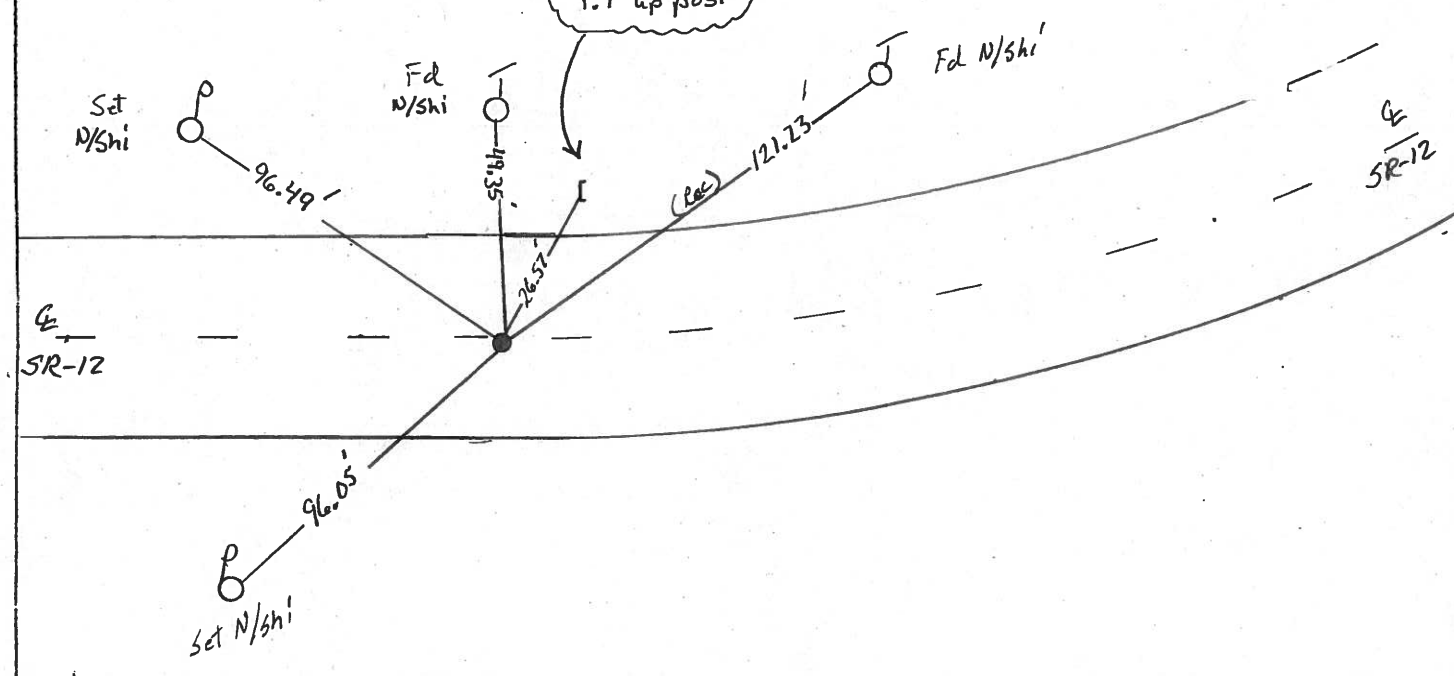
S.L.M. 366+36



Record: T.S.
350+65.89
PK/w atop same atop
mine spk.

Set PK/w
10-14-99
SAH

Cut Notch in
Sign Post -
1.7' up post



O.D.O.T. DISTRICT 2 SURVEY OFFICE

PERSONNEL

NOTES Cronin
 H.C. Ripple
 R.C. Barbour
Geyman

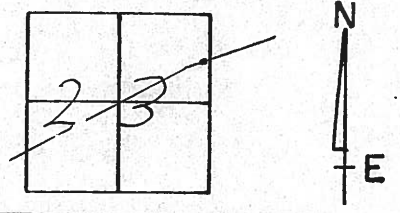
REFERENCE NO. 27

DRAWN - 1/29/87
 DATE 5/06/87
 WEATHER SUNNY
 TEMP. 58°

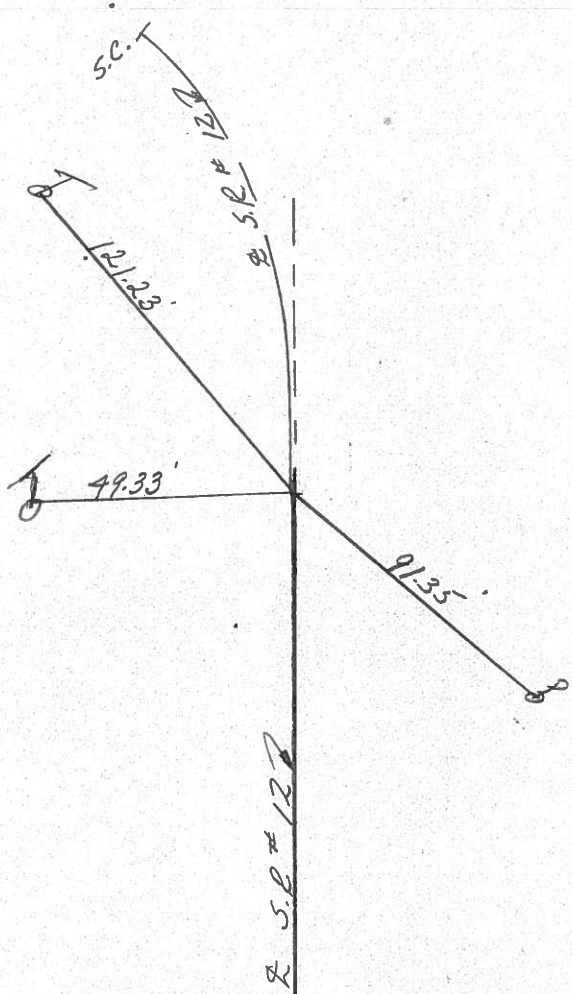
SHEET 26 OF

ROUTE # 12
 COUNTY Seneca
 TOWNSHIP Jackson
 SECTION 23
T 3 N R 13 E

TYPE MONUMENT P.K. & washer
 ON SURFACE - BELOW on surface
 LEFT - & PAV'T. - RIGHT & Pav't
 TO EDGE PAVEMENT
 S.L.M.



T.S
350+65.89
P.K. & washer at top
Same at top mine spike



PERSONNEL TITLE PERSONNEL TITLE

COUNTY Seneca DATE 10-17-72

S. R. 12 WEATHER Fair

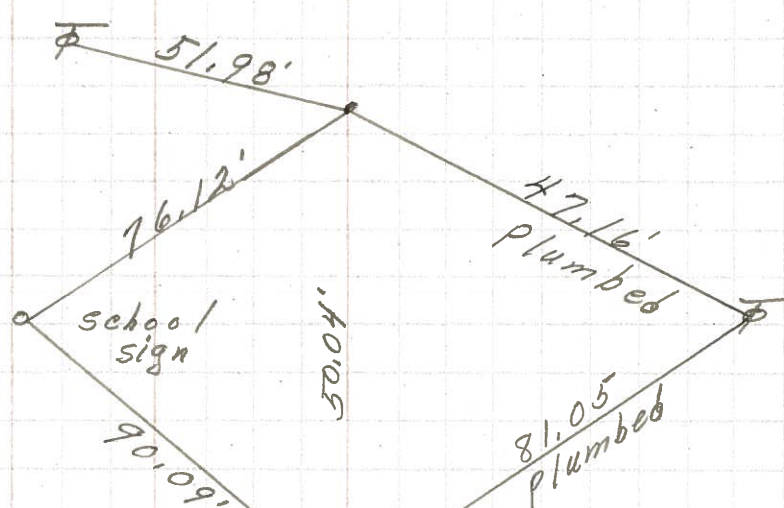
SEC. 23 & 24 Jackson twp. TEMP. 50°

DESCRIPTION Eastoria to Sandusky Co. Line LEFT CENTER LINE RIGHT JOB NO.



P.I. of R/W
352+72.05

29



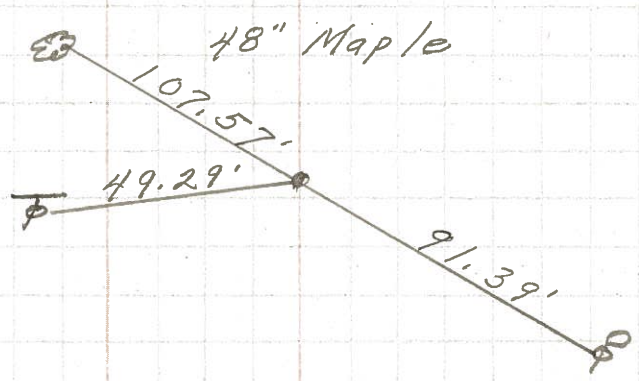
P.C. of R/W
352+20.80
small R.R. spk.

28



T.S.
350+65.89
small R.R. spk.

27



PERSONNEL TITLE PERSONNEL TITLE

COUNTY Seneca

DATE

S. R. 12-113

WEATHER

SEC.

TEMP.

DESCRIPTION

LEFT

CENTER LINE

RIGHT

JOB NO.

Sta. 253+20.06 E/w marker 33' 33' E/w marker

P.C.

Iron Pin on E of E/w

#431

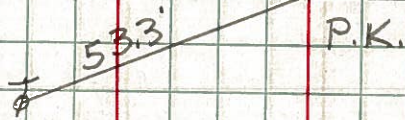


Sta. 255+08.06 E/w marker 33' 33' E/w marker

P.T.

Iron Pin on E of E/w

#432

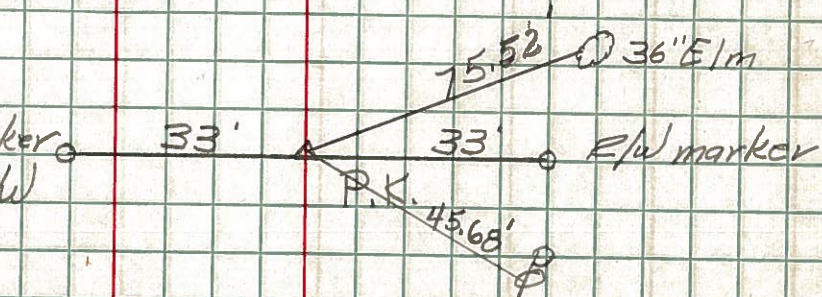


Sta. 263+80

P.I.

Iron pin on E of E/w

#433



End of Sec. Q Start Sec. G.

Sta. 266+32.06 E/w marker 33' 33' E/w marker

P.C.

Iron Pin on E of E/w

#434

P.K.

Sta. 268+35.39 E/w marker 33' 33' E/w marker

P.T.

Iron Pin on E of E/w

#435

P.K.