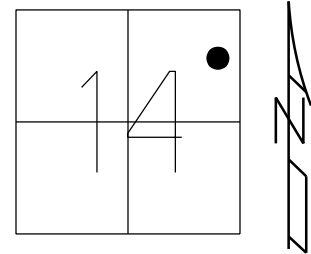


O.D.O.T. DISTRICT 2 SURVEY OFFICE (USE ONLY)

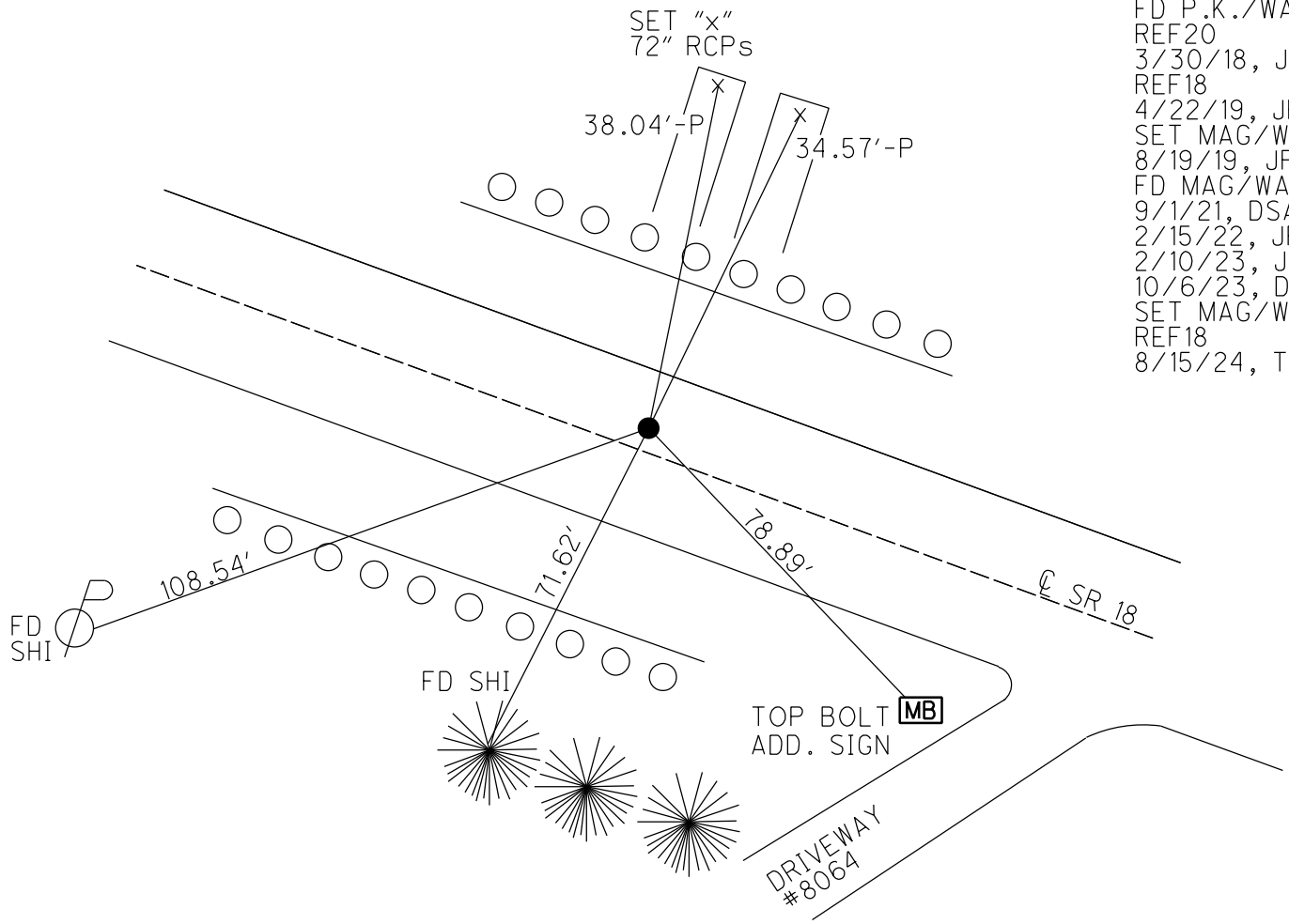
PERSONNEL _____ REFERENCE NO. 18 SHEET _____ OF _____
 NOTES BARRIERE DATE 8/15/24 ROUTE SR 18
 H.C. NIESE WEATHER SUNNY COUNTY SENECA
 R.C. MILLER TEMP. 76° TOWNSHIP LOUDON
 SECTION 14
 DWG BY BARRIERE PID 92371 T 2 N R 13 E

TYPE MONUMENT MAG NAIL/WASHER
 ON SURFACE - BELOW ON
 OFFSET \odot PAVEMENT 3.7' LT LT : RT
 _____ TO _____ EDGE PAVEMENT
 STATION: 306+99.07
 HORZ.DATUM: NAD83 (2011) GEOID: 18
 GRID: NORTHING: 536080.718 EASTING: 1738722.920
 LDP: NORTHING: _____ EASTING: _____



NOTE: GUARDRAIL TO BE REPLACED

RECORD: P.C.
 STA. 306+99.07
 SET P.K./WASHER
 11/6/97, MB
 FD P.K./WASHER
 REF20
 3/30/18, JLL
 REF18
 4/22/19, JFO
 SET MAG/WASHER
 8/19/19, JFO
 FD MAG/WASHER
 9/1/21, DSA
 2/15/22, JFO
 2/10/23, JMR
 10/6/23, DSA
 SET MAG/WASHER
 REF18
 8/15/24, TDN



O.D.O.T. DISTRICT 2 SURVEY OFFICE (USE ONLY)

PERSONNEL

REFERENCE NO. 18

SHEET 17 OF 48

NOTES AUBLE
 H.C. NIESE
 R.C. AUBLE

DATE 9/1/21
 WEATHER WINDY
 TEMP. 76°

ROUTE SR 18
 COUNTY SENECA
 TOWNSHIP LOUDON
 SECTION 14
 T 2 N R 13 E

DWG BY RHOADES PID PVTRAIN

TYPE MONUMENT MAG/WASHER

ON SURFACE - ~~BELOW~~ ON

OFFSET $\text{\textcircled{C}}$ PAVEMENT 3.7' LT : ~~RT~~
8.0' TO LT EDGE PAVEMENT

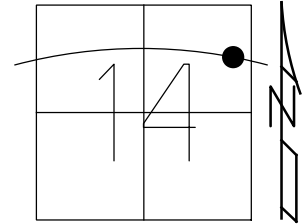
STATION: 306+99.07

HORZ. DATUM: NAD83(2011)

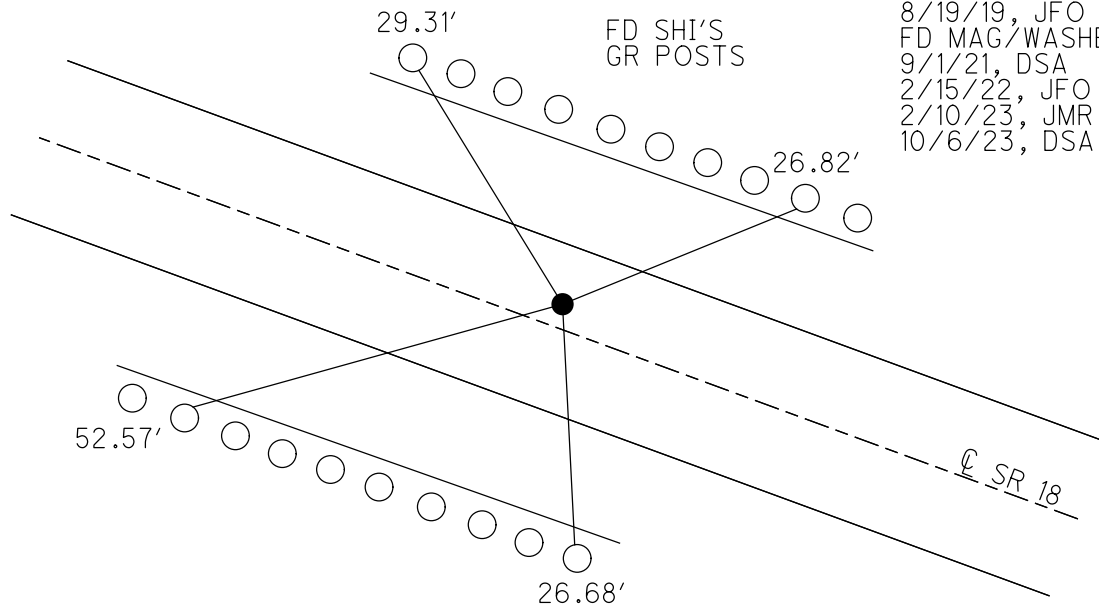
GEOID: 2012A

GRID: NORTHING: 535406.122

EASTING: 1741087.099



RECORD: P.C.
 STA. 306+99.07
 SET P.K./WASHER
 11/6/97, MB
 FD P.K./WASHER
 REF20
 3/30/18, JLL
 REF18
 4/22/19, JFO
 SET MAG/WASHER
 8/19/19, JFO
 FD MAG/WASHER
 9/1/21, DSA
 2/15/22, JFO
 2/10/23, JMR
 10/6/23, DSA



O.D.O.T. DISTRICT 2 SURVEY OFFICE (USE ONLY)

PERSONNEL _____

REFERENCE NO. 18

SHEET 17 OF 48

NOTES AUBLE DATE 9/1/21
 H.C. NIESE WEATHER WINDY
 R.C. AUBLE TEMP. 76°

ROUTE SR 18
 COUNTY SENECA
 TOWNSHIP LOUDON
 SECTION 14

DWG BY RHOADES PID PVTRAIN

T 2 N R 13 E

TYPE MONUMENT MAG/WASHER

ON SURFACE - ~~BELOW~~ ON

OFFSET ☉ PAVEMENT 3.7' LT : ~~RT~~

8.0' TO LT EDGE PAVEMENT

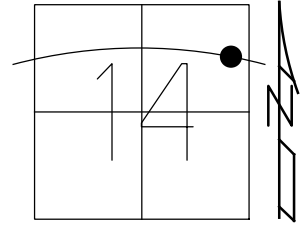
STATION: 306+99.07

HORZ.DATUM: NAD83(2011)

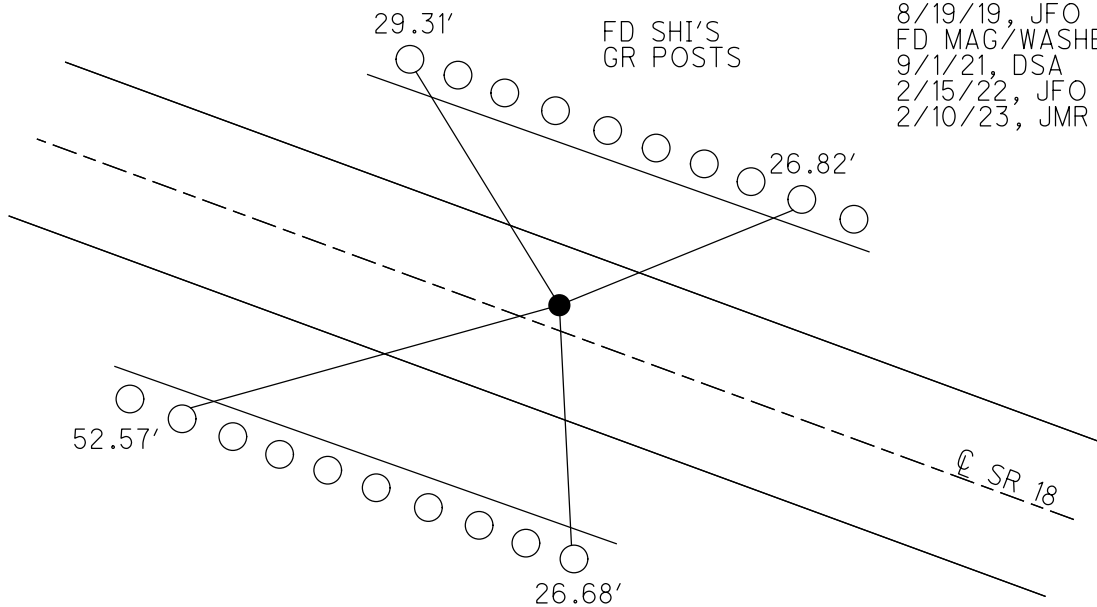
GEOID: 2012A

GRID: NORTHING: 535406.122

EASTING: 1741087.099



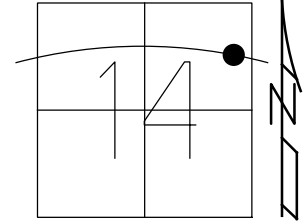
RECORD: P.C.
 STA. 306+99.07
 SET P.K./WASHER
 11/6/97, MB
 FD P.K./WASHER
 REF20
 3/30/18, JLL
 REF18
 4/22/19, JFO
 SET MAG/WASHER
 8/19/19, JFO
 FD MAG/WASHER
 9/1/21, DSA
 2/15/22, JFO
 2/10/23, JMR



O.D.O.T. DISTRICT 2 SURVEY OFFICE (USE ONLY)

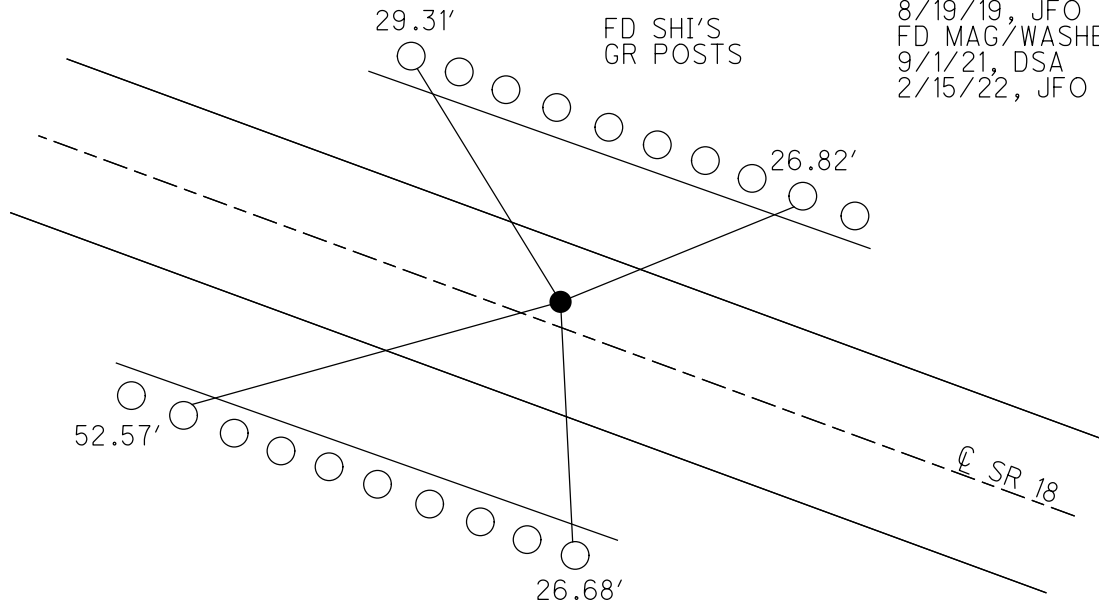
PERSONNEL _____ REFERENCE NO. 18 SHEET 17 OF 48
 NOTES AUBLE DATE 9/1/21 ROUTE SR 18
 H.C. NIESE WEATHER WINDY COUNTY SENECA
 R.C. AUBLE TEMP. 76° TOWNSHIP LOUDON
 _____ SECTION 14
 DWG BY RHOADES PID PVTRAIN T 2 N R 13 E

TYPE MONUMENT MAG/WASHER
 ON SURFACE - ~~BELOW~~ ON
 OFFSET Q PAVEMENT 3.7' LT : ~~RT~~
8.0' TO LT EDGE PAVEMENT
 STATION: 306+99.07



HORIZ.DATUM: NAD83(2011) GEOID: 2012A
 GRID: NORTHING: 535406.122 EASTING: 1741087.099

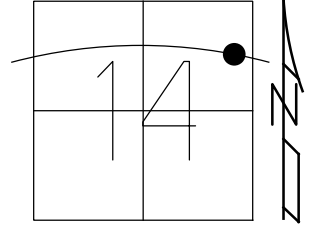
RECORD: P.C.
 STA. 306+99.07
 SET P.K./WASHER
 11/6/97, MB
 FD P.K./WASHER
 REF20
 3/30/18, JLL
 REF18
 4/22/19, JFO
 SET MAG/WASHER
 8/19/19, JFO
 FD MAG/WASHER
 9/1/21, DSA
 2/15/22, JFO



O.D.O.T. DISTRICT 2 SURVEY OFFICE (USE ONLY)

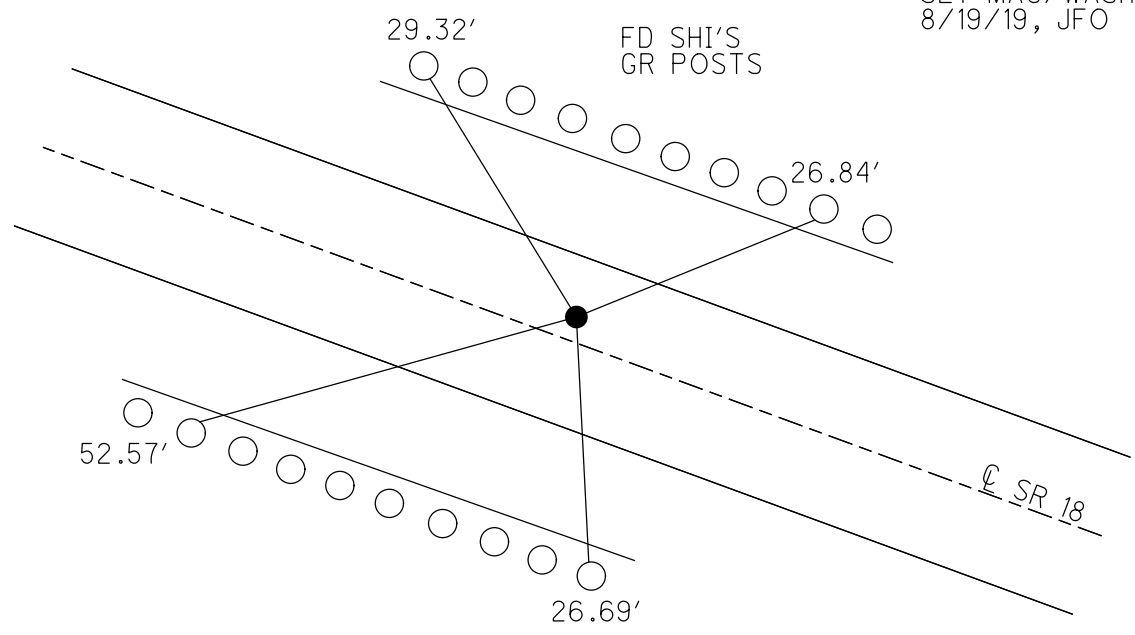
PERSONNEL _____ REFERENCE NO. 18 SHEET 17 OF 48
 NOTES RHOADES DATE 8/19/19 ROUTE SR 18
 H.C. O'DONNELL WEATHER SUNNY COUNTY SENECA
 R.C. AUBLE TEMP. 70° TOWNSHIP LOUDON
 DWG BY NIESE PID 101340 SECTION 14
 T 2 N R 13 E

TYPE MONUMENT MAG/WASHER
 ON SURFACE - ~~BELOW~~ ON
 OFFSET Q PAVEMENT 3.7' LT : ~~RT~~
8.0' TO LT EDGE PAVEMENT
 STATION: 306+99.07



HORZ. DATUM: NAD83(2011) GEOID: 2012A
 GRID: NORTHING: 535406.122 EASTING: 1741087.099

RECORD: P.C.
 STA. 306+99.07
 SET P.K./WASHER
 11/6/97, MB
 FD P.K./WASHER
 REF20
 3/30/18, JLL
 REF18
 4/22/19, JFO
 SET MAG/WASHER
 8/19/19, JFO



O.D.O.T. DISTRICT 2 SURVEY OFFICE

PERSONNEL

REFERENCE NO. _____

SHEET 22 OF 22

NOTES Barnhart

H.C. CANTERBURY

R.C. Rousos

W Weaver

Drawn by Rousos

DATE 7-11-97

WEATHER Sunny

TEMP. +75°

ROUTE 18

COUNTY SENECA

TOWNSHIP LOUDON

SECTION 14

T 2 N R 13 E

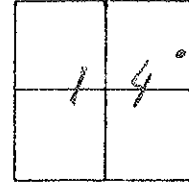
TYPE MONUMENT MINI SPIKE

ON SURFACE - BELOW 3.5" Below

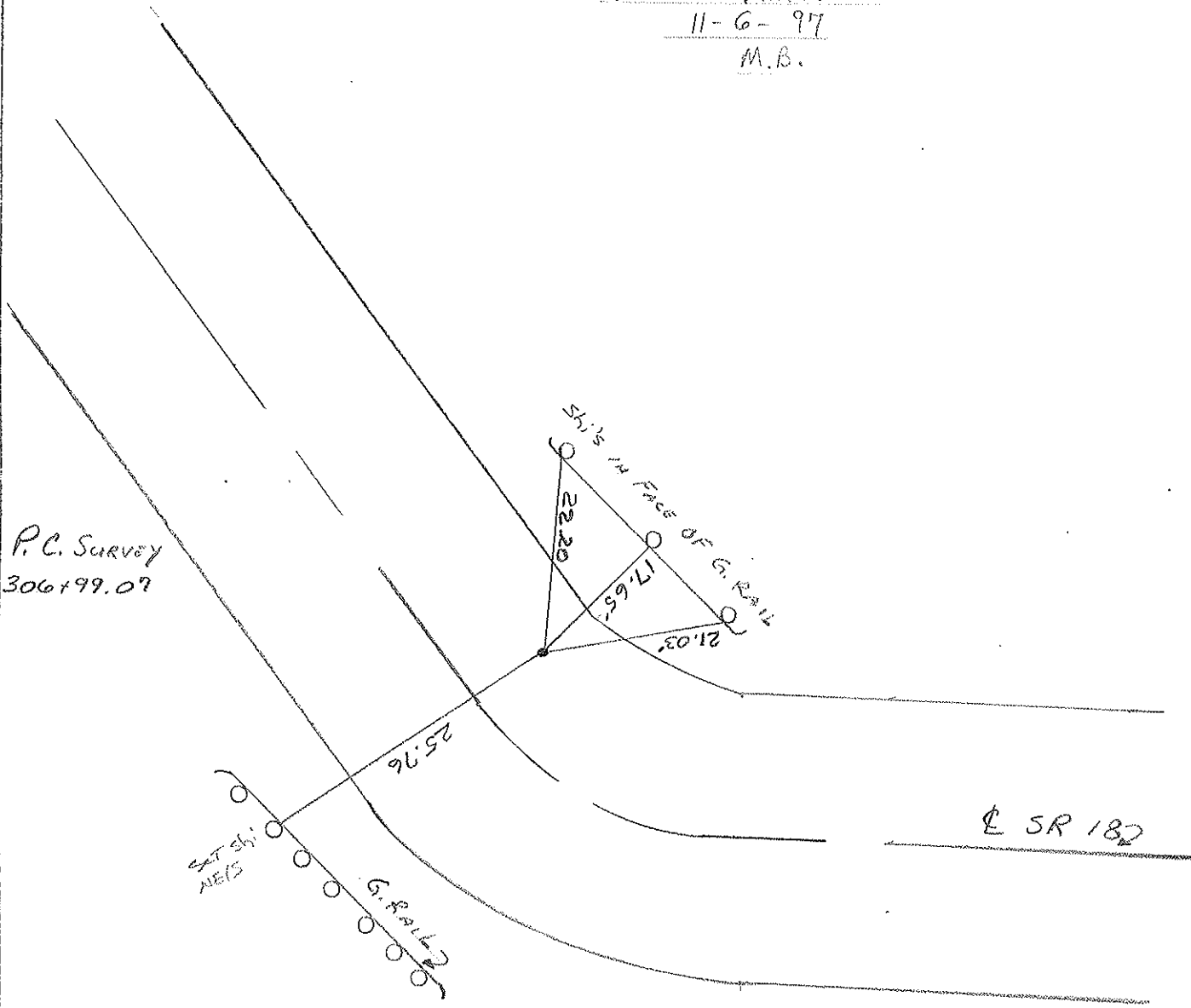
LEFT - CL PAV'T. - RIGHT 3.7

B.O TO Lt EDGE PAVEMENT

S.L.M. 9+730.8



RESET P.K. & WASHER
11-6-97
M.B.



O.D.O.T. DISTRICT 2 SURVEY OFFICE

PERSONNEL

NOTES CROWIN
H.C. RIFFLE
R.C. BARBOUR
GEYMAN

REFERENCE NO. 22

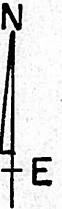
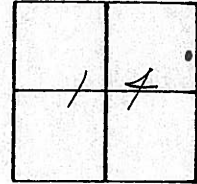
DATE 1/22/89
WEATHER OVERCAST
TEMP. 37°

SHEET 22 OF

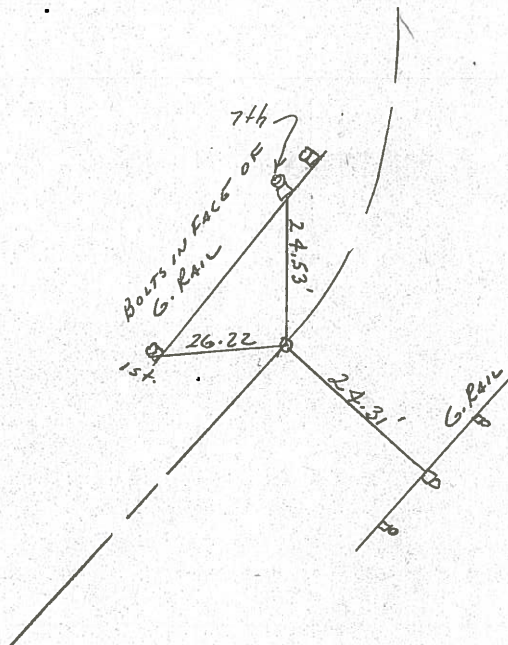
ROUTE #18
COUNTY SENECA
TOWNSHIP LOUDBON
SECTION 14
T 2 N R 13 E

TYPE MONUMENT MINE SPIKE
ON SURFACE - BELOW 3.5±
LEFT - ☉ PAV'T. - RIGHT
 TO EDGE PAVEMENT
S.L.M.

18



P.C. SURVEY
306 + 99.07



PERSONNEL TITLE PERSONNEL TITLE

COUNTY Seneca

DATE Jan. 2, '59

Ash Cronin

S. R. 18 Fosteria-Bascom Rd.

WEATHER Clear

Leemaster

Lahr

SEC Sett-18 (1.79-8.60)

TEMP 40°

DESCRIPTION

Control Point Ties - & Survey & Const.

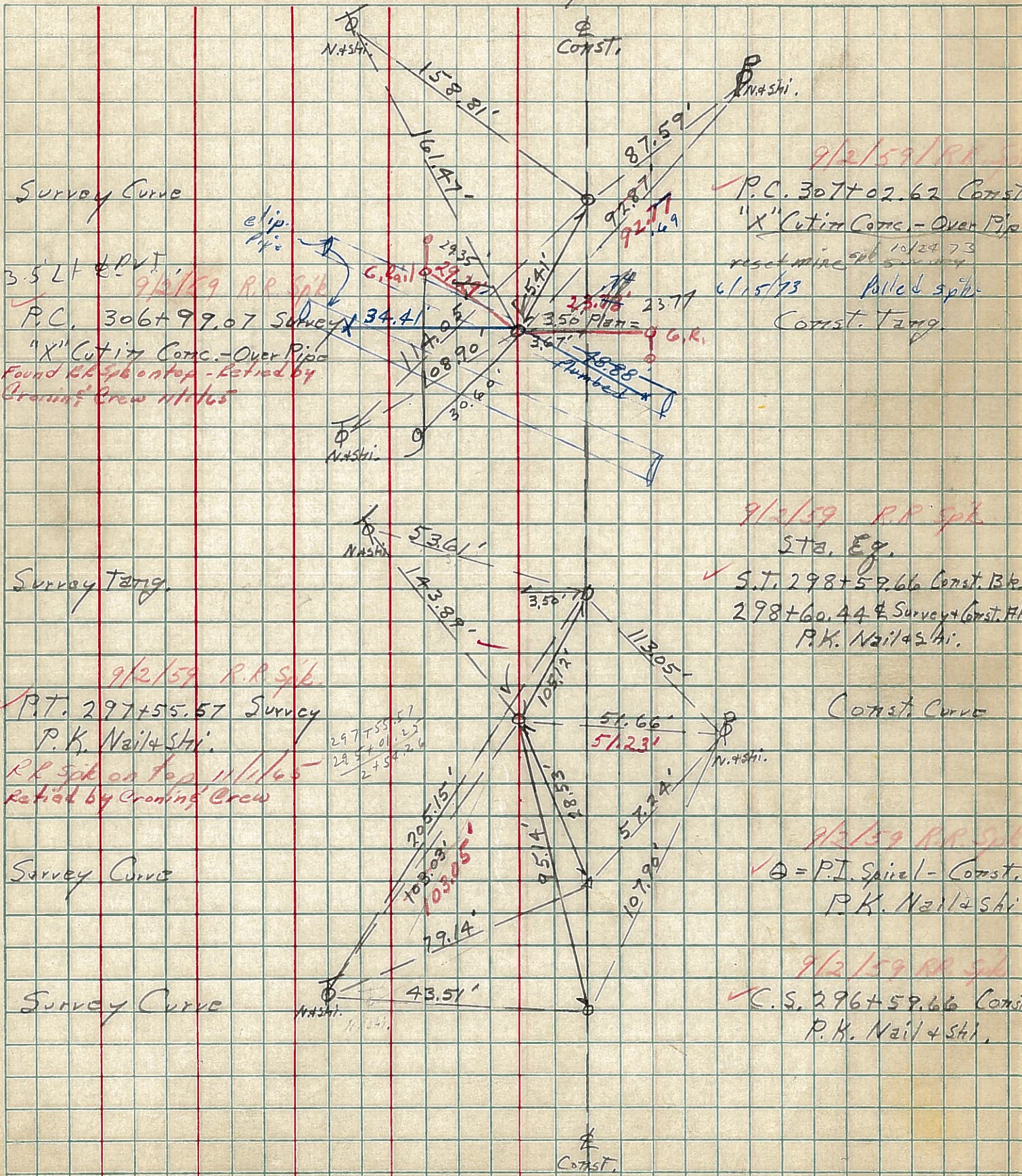
JOB NO.

LEFT

CENTER LINE Survey

RIGHT

18



Survey Curve

3.5' LT & PVT

P.C. 306+99.07 Survey
 "X" Cut in Conc. - Over Pipe
 Found 66 spk on top - Retied by
 Grading Crew 11/1/65

Survey Tang.

P.T. 297+55.57 Survey
 P.K. Nail & Shi.
 R.R. Spk on top 11/1/65
 Retied by Grading Crew

Survey Curve

Survey Curve

9/2/59 R.R. Spk
 P.C. 307+02.62 Const
 "X" Cut in Conc. - Over Pipe
 reset wire spk 10/24/73
 6/15/73 Pallet spk
 Const. Tang.

9/2/59 R.R. Spk
 STA. Eg.
 S.T. 298+59.66 Const. Bk.
 298+60.44 & Survey & Const. Hk.
 P.K. Nail & Shi.

Const. Curve
 P.I. Spiral - Const.
 P.K. Nail & Shi.

9/2/59 R.R. Spk
 C.S. 296+59.66 Const
 P.K. Nail & Shi.