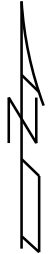
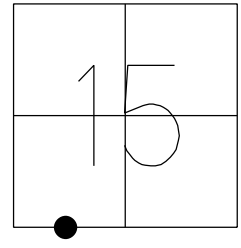


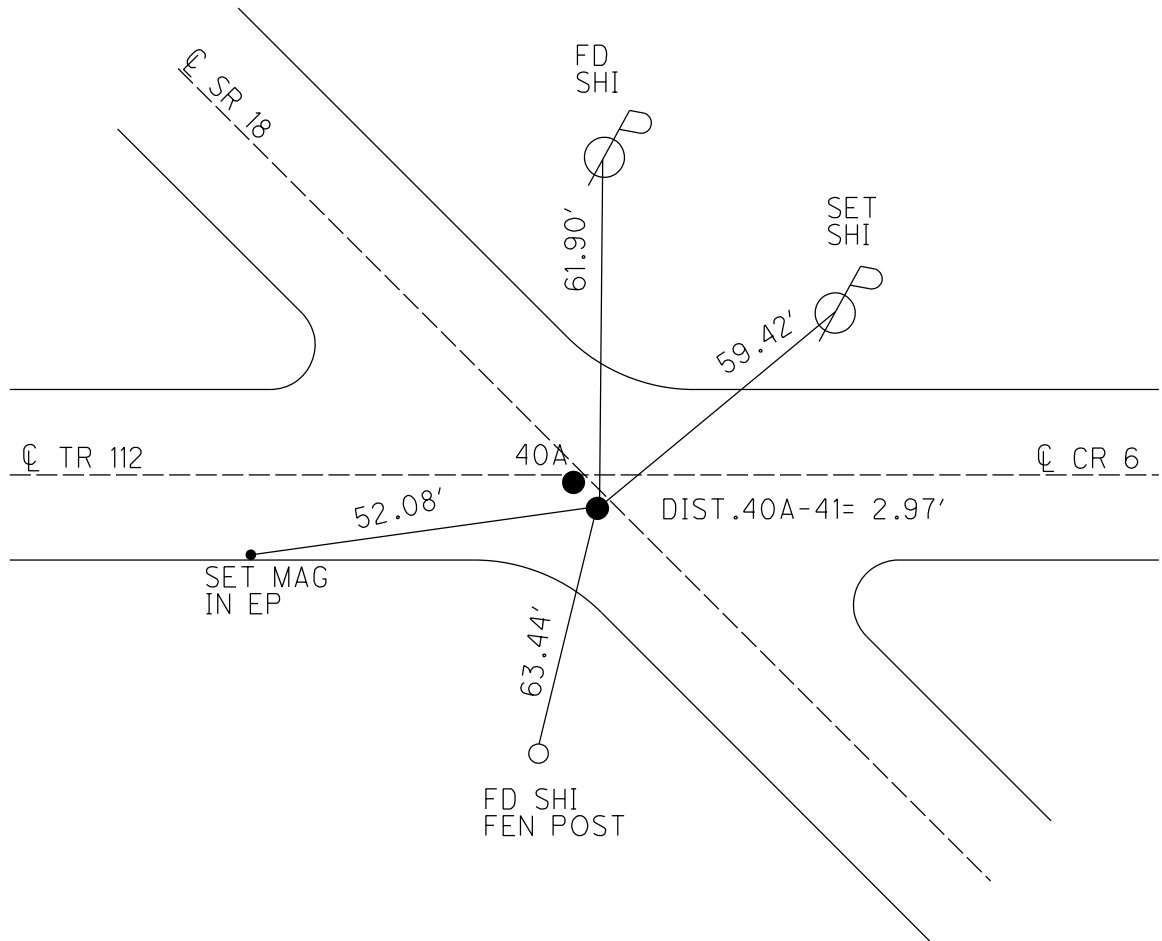
# O.D.O.T. DISTRICT 2 SURVEY OFFICE (USE ONLY)

PERSONNEL \_\_\_\_\_ REFERENCE NO. 41 SHEET \_\_\_\_\_ OF \_\_\_\_\_  
 NOTES RHOADES DATE 4/10/24 ROUTE SR 18  
 H.C. NIESE WEATHER CLOUDY COUNTY SENECA  
 R.C. MILLER TEMP. 55° TOWNSHIP HOPEWELL  
 SECTION 15  
 DWG BY BARRIERE PID 92371 T 2 N R 14 E

TYPE MONUMENT MAG NAIL/WASHER  
 ON SURFACE - BELOW ON  
 OFFSET  $\text{C}$  PAVEMENT 0.8' RT LT : RT  
\_\_\_\_\_ TO \_\_\_\_\_ EDGE PAVEMENT  
 STATION: 558+87  
 HORZ.DATUM: NAD83 (2011) GEOID: 18  
 GRID: NORTHING: 531634.153 EASTING: 1763997.707  
 LDP: NORTHING: \_\_\_\_\_ EASTING: \_\_\_\_\_



RECORD:  
 FD P.K./WASHER  
 11/5/91  
 FD P.K./WASHER  
 6/4/01, BVD  
 SET P.K./WASHER  
 8/1/01, SAH  
 FD P.K./WASHER  
 REF41  
 4/23/19  
 8/16/19, JFO  
 FD P.K./WASHER  
 9/2/21, DSA  
 2/16/22, JFO  
 9/27/22, TDN  
 SET MAG/WASHER  
 9/11/24, TDN



O.D.O.T. DISTRICT 2 SURVEY OFFICE (USE ONLY)

PERSONNEL

REFERENCE NO. 41

SHEET 44 OF 48

NOTES SAVAGE  
 H.C. AUBLE  
 R.C. NIESE

DATE 9/2/21  
 WEATHER SUNNY  
 TEMP. 64°

ROUTE SR 18  
 COUNTY SENECA  
 TOWNSHIP HOPEWELL  
 SECTION 15  
 T 2 N R 14 E

DWG BY RHOADES PID PVTRAIN

TYPE MONUMENT P.K./WASHER

ON SURFACE - ~~BELOW~~ ON

OFFSET 11.0' TO LT EDGE PAVEMENT  
0.8' LT : RT

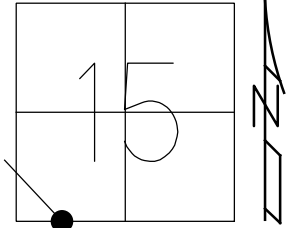
STATION: 558+87

HORZ.DATUM: NAD83(2011)

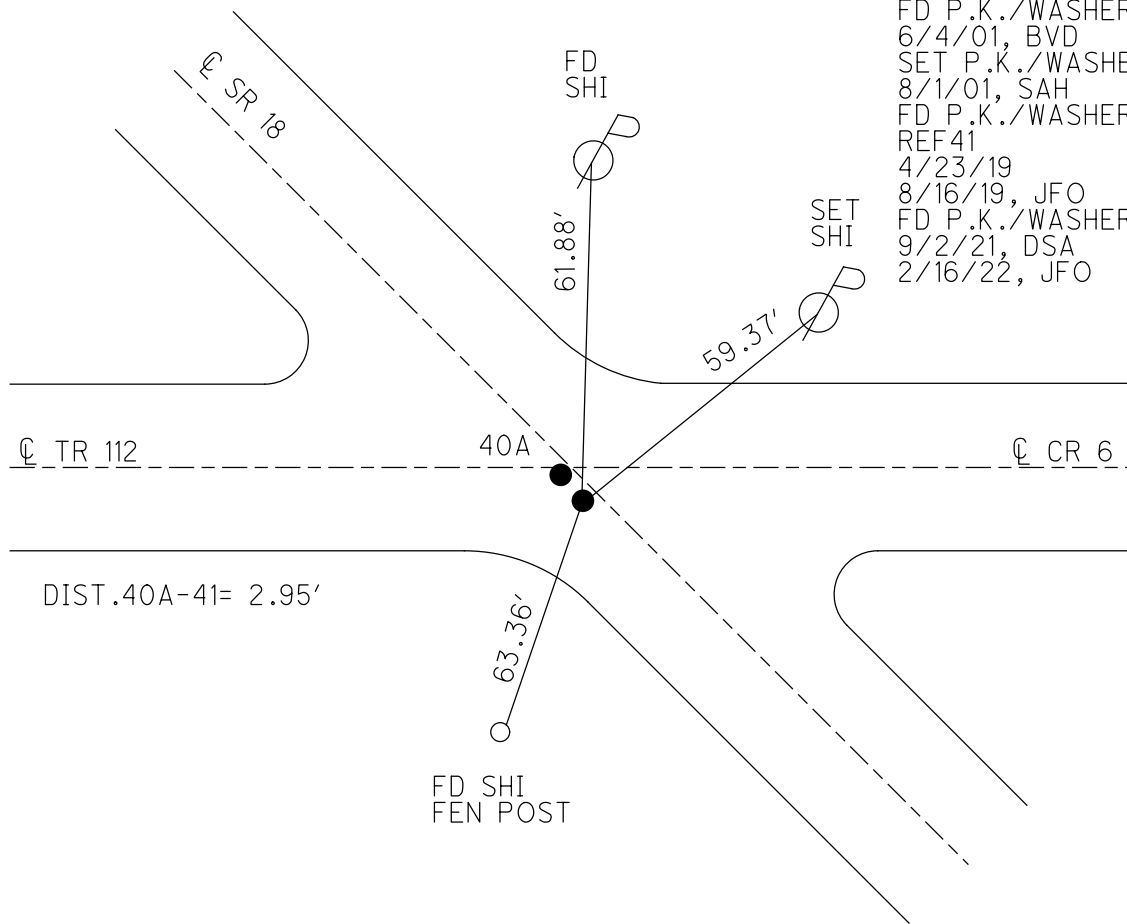
GEOID: 2012A

GRID: NORTHING: 531634.177

EASTING: 1763997.671



RECORD:  
 FD P.K./WASHER  
 11/5/91  
 FD P.K./WASHER  
 6/4/01, BVD  
 SET P.K./WASHER  
 8/1/01, SAH  
 FD P.K./WASHER  
 REF41  
 4/23/19  
 8/16/19, JFO  
 FD P.K./WASHER  
 9/2/21, DSA  
 2/16/22, JFO



O.D.O.T. DISTRICT 2 SURVEY OFFICE (USE ONLY)

PERSONNEL

REFERENCE NO. 41

SHEET 44 OF 48

NOTES VAN DUSEN

DATE 6/4/01

ROUTE SR 18

H.C. ROUSOS

WEATHER SUNNY

COUNTY SENECA

R.C. BROWN

TEMP. 60°

TOWNSHIP HOPEWELL

SECTION 15

DWG BY NIESE

PID NO PID

T 2 N R 14 E

TYPE MONUMENT P.K./WASHER

ON SURFACE - ~~BELOW~~ ON

OFFSET Q PAVEMENT 0.8' LT : RT

11.0' TO LT EDGE PAVEMENT

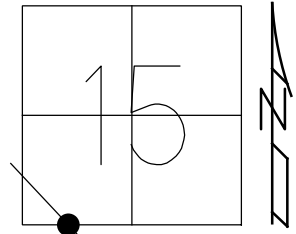
STATION: 558+87

HORZ.DATUM: NAD83(2011)

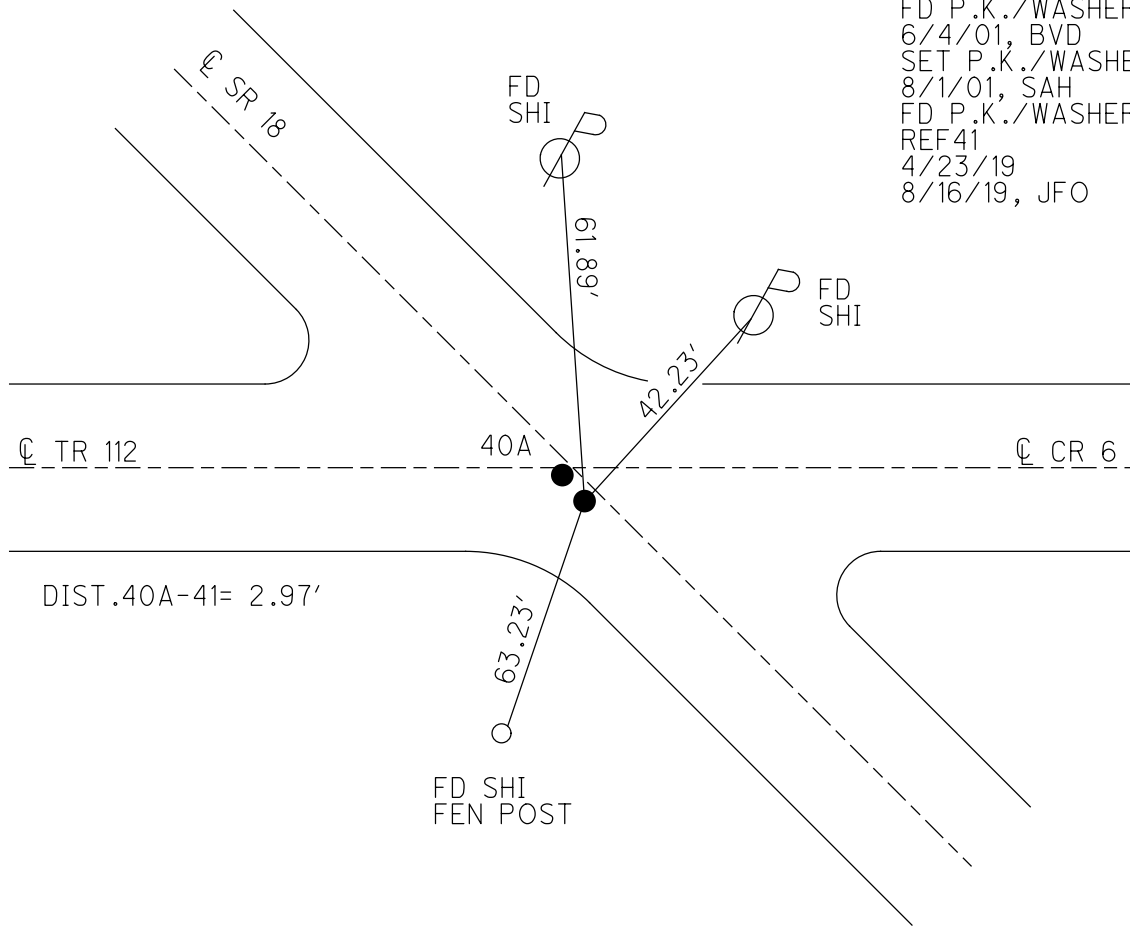
GEOID: 2012A

GRID: NORTHING: 531634.177

EASTING: 1763997.671



RECORD:  
 FD P.K./WASHER  
 11/5/91  
 FD P.K./WASHER  
 6/4/01, BVD  
 SET P.K./WASHER  
 8/1/01, SAH  
 FD P.K./WASHER  
 REF41  
 4/23/19  
 8/16/19, JFO



# O.D.O.T. DISTRICT 2 SURVEY OFFICE

PERSONNEL

REFERENCE NO. 41

SHEET 2 OF 27

NOTES CHENEY

H.C. RIPPLE

R.C. BARBOUR

GEYMAN

DATE 11-5-1991

WEATHER PARTLY CLOUDY

TEMP. 30°

ROUTE 18

COUNTY SENECA

TOWNSHIP HOPEWELL

SECTION 15 1/2 22

T2N R14E

TYPE MONUMENT SET PK/WASHERS

ON SURFACE - ~~BELOW~~

~~LEFT~~ - 1' TO PAV'T. - RIGHT 1' BOTH POINTS

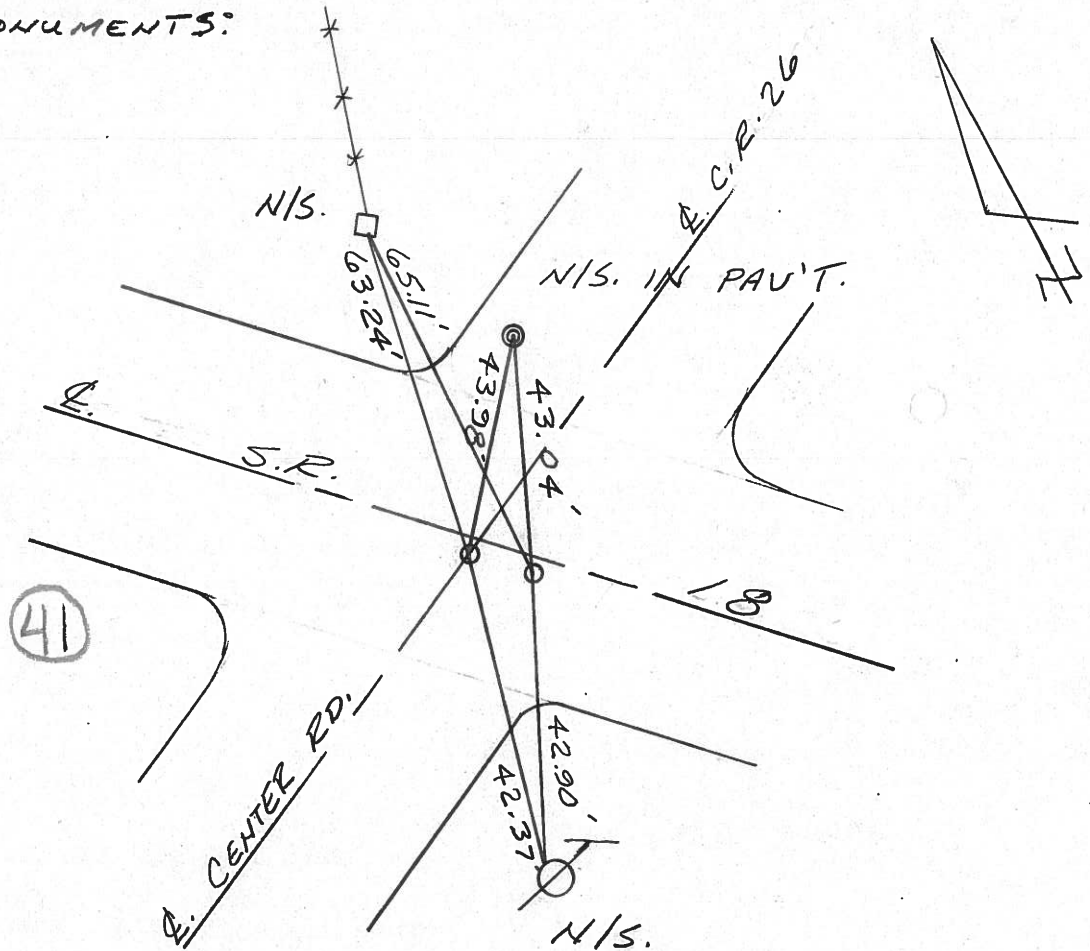
11' TO N. EDGE PAVEMENT BOTH POINTS

S.L.M. 558+71

1	5
2	8



PREVIOUS MONUMENTS:  
PKS/SHIHERS



Q.D.O.T. DISTRICT 2 SURVEY OFFICE

Sht.      of     

OK-9-12-80-G.W.S.

County Seneca S.R. # 18

Date 5-19-80

Township Hopewell

Weather cloudy

Section 15 & 22

Temp. 58°

T2N, R1E

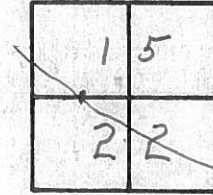
Personnel Schneider

Mosser

Barbour

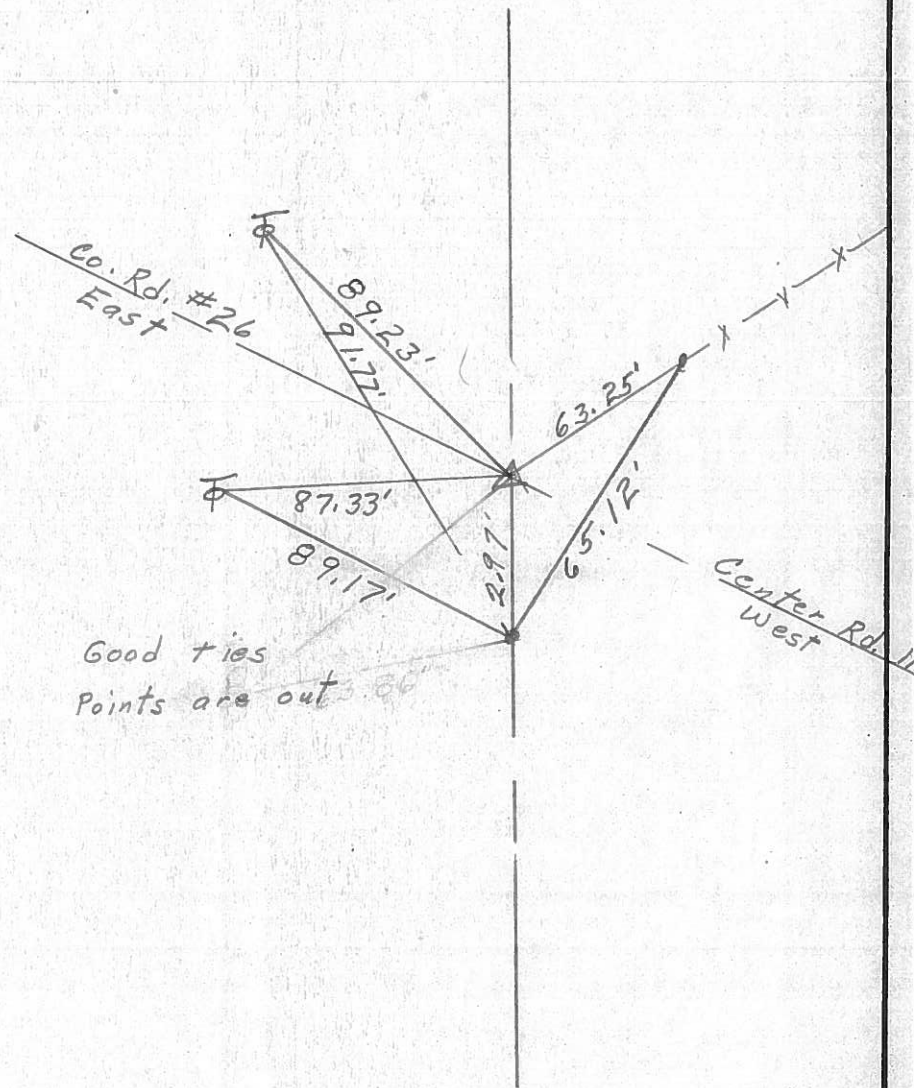
Cronin

Ripple Geyman



41

☉ S.R. #18



45.14 77.4

1942 Plan

SET P.K. NAILS & SHI.

Good ties  
Points are out 66'

PERSONNEL	TITLE	PERSONNEL	TITLE	COUNTY	DATE	WEATHER	TEMP.
Schneider		Potts		Seneca	10-21-68	Cloudy-Rain	45°
Masser				S. R. 18			
Barbour				SEC. Bascom to Tiffin			
Redding							

DESCRIPTION: Ties for Control Points

