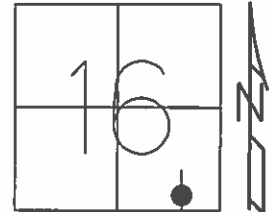


O.D.O.T. DISTRICT 2 SURVEY OFFICE (USE ONLY)

PERSONNEL _____ REFERENCE NO. 23 SHEET 26 OF 64
 NOTES RHOADES DATE 08-18-2015 ROUTE SR 19
 H.C. O'DONNELL WEATHER CLOUDY COUNTY SENECA
 R.C. RHOADES TEMP. 78°F TOWNSHIP BLOOM
 _____ SECTION 16
 _____ T 1 N R 16 E

TYPE MONUMENT PK & WASHER
 ON SURFACE - ~~BELOW~~ ON
~~LEFT~~ - ℄ PAV'T - ~~RIGHT~~ ON
10.2' TO RT EDGE PAVEMENT
 S.L.M. 161+66.09



Grid: Northing: 499991.696 Easting: 1825905.5500

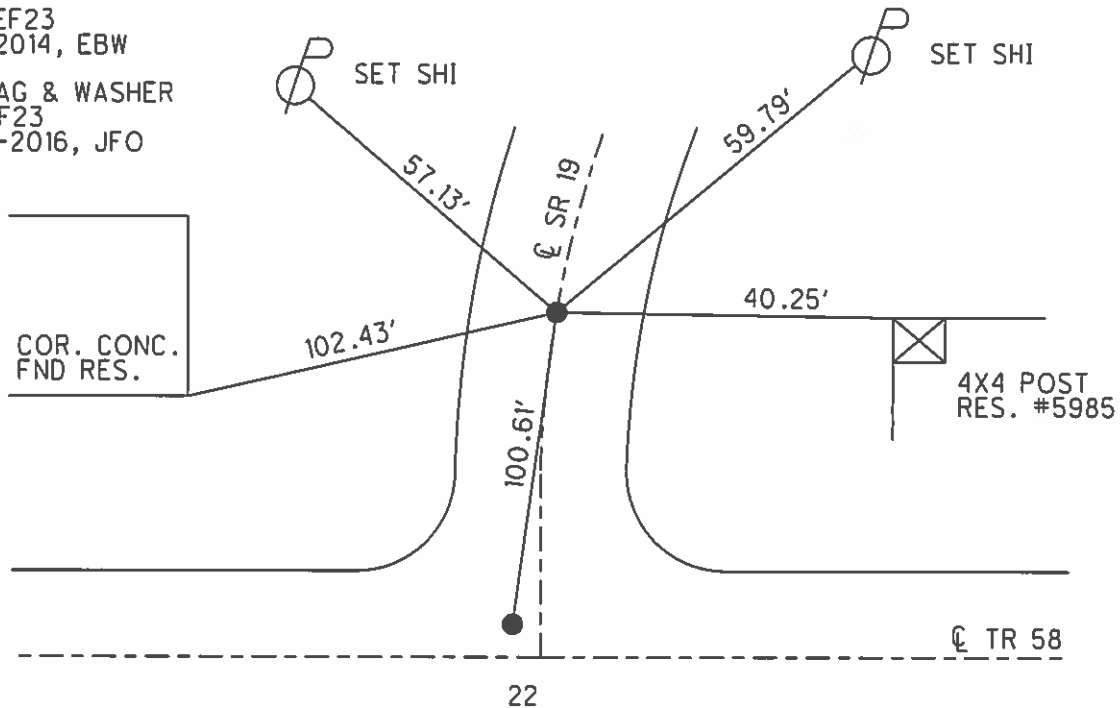
RECORD PT STA 162+11
 PK & WASHER ATOP
 BOAT SPIKE ATOP
 RR SPK
 09-20-1985

SET PK & WASHER
 09-24-1992 RCC

FD PK & WASHER
 12-05-2013 JMR

GPS REF23
 01-13-2014, EBW

SET MAG & WASHER
 NEWREF23
 07-20-2016, JFO



O.D.O.T. DISTRICT 2 SURVEY OFFICE (USE ONLY)

PERSONNEL _____

REFERENCE NO. 23

SHEET 26 OF 62

NOTES CANTERBURY

DATE 04-19-06

ROUTE SR 19

H.C. BARNHISEL

WEATHER FAIR

COUNTY SENECA

R.C. HOMAN

TEMP. +62°

TOWNSHIP BLOOM

SECTION 16

T 1 N R 16 E

TYPE MONUMENT FD. PK./WASHER

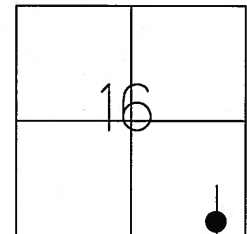
ON SURFACE - ~~BELOW~~ ON SURFACE

~~LEFT~~ - C PAV'T - ~~RIGHT~~ ON CL.

10.2' TO RT. EDGE PAVEMENT

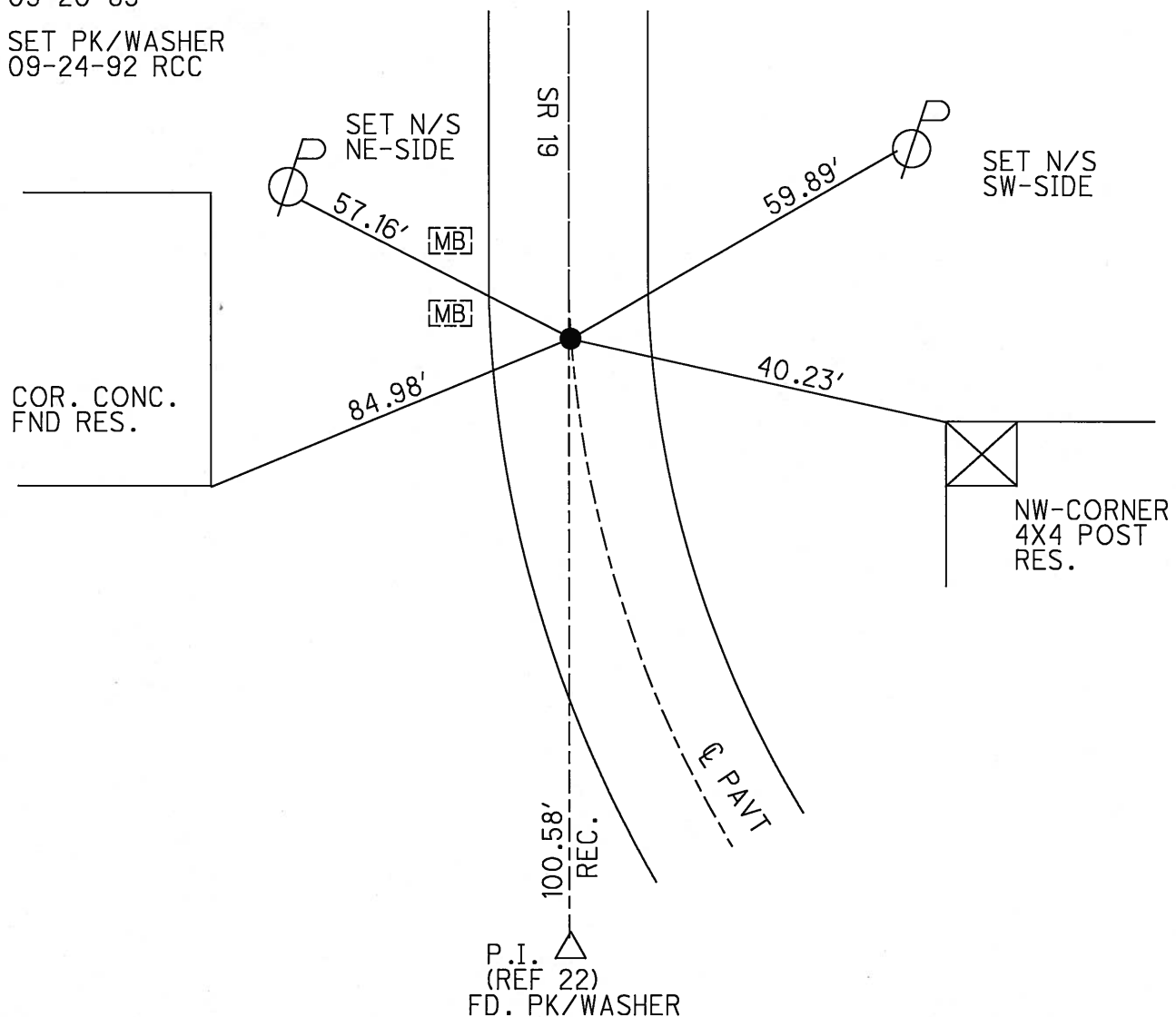
S.L.M. 161+62 (SV26)

Grid: Northing: _____ Easting: _____



RECORD PT. STA. 162+11
 PK./WASHER ATOP
 BOAT SPK. ATOP
 RR. SPK.
 09-20-85

SET PK/WASHER
 09-24-92 RCC



O.D.O.T. DISTRICT 2 SURVEY OFFICE

PERSONNEL

REFERENCE NO. 23

SHEET 24 OF 53

NOTES RIPPLE

H.C. BARBOUR

DATE 6-22-1992

ROUTE #19

R.C. CHENEY

WEATHER CLOUDY

COUNTY SENECA

GEYMAN

TEMP. 66°

TOWNSHIP BLOOM

SECTION 16

T. 14 R. 16 E.

TYPE MONUMENT PK/WASHER

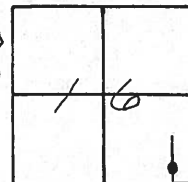
ON SURFACE - ~~BELOW~~ YES

~~LEFT~~ - PAV'T. - ~~RIGHT~~ ON

10.0' TO Rt. EDGE PAVEMENT

S.L.M. 161+67

SET PK/WASHER
9-24-1992
RCC



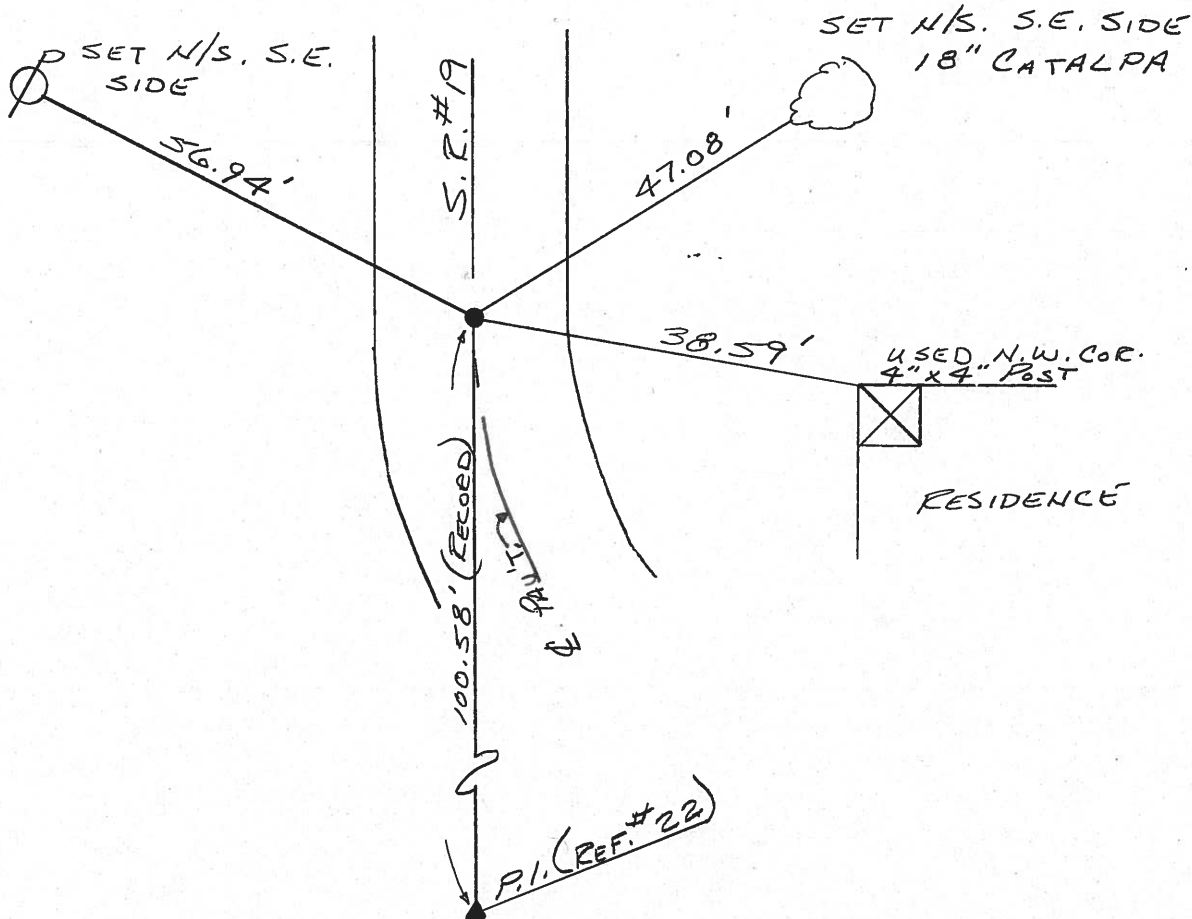
RECORD: 9/20/85

P.T. STA. 162+11+

PK/WASHER ATOP

BOAT SPK. ATOP

P.P. SPK.



County Seneca S.R. # 19

Date 9/20/85

Township Bloom

Weather sunny

Section 16

Temp. 75°

T1N, R16E

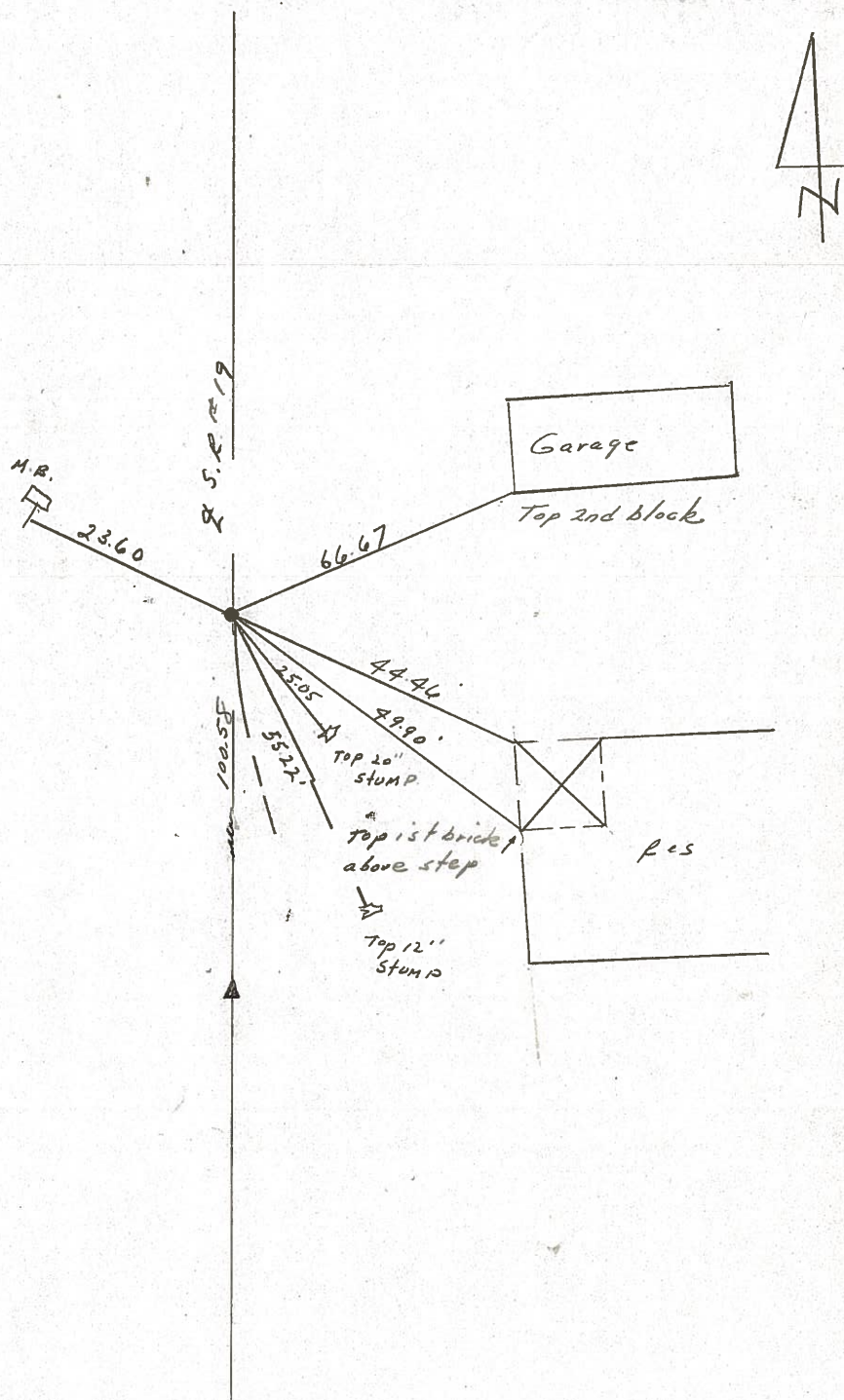
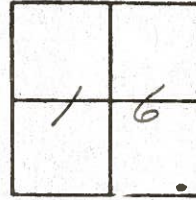
Personnel Cronin

Ripple

Geyman

Barbour

23



P.T.
- 162+11 ± S.L.M.
P.K. WASHER ATOP BOAT SPIKE
ATOP R.R. SPIKE & PAUT.

County SENECA S.R. 19

Date 7/16/79

Township Bloom

Weather sunny

Section 16

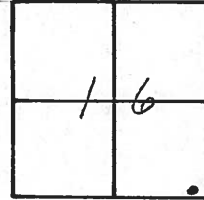
Temp. 87°

T/N, R/E

Personnel Cronin

Ripple

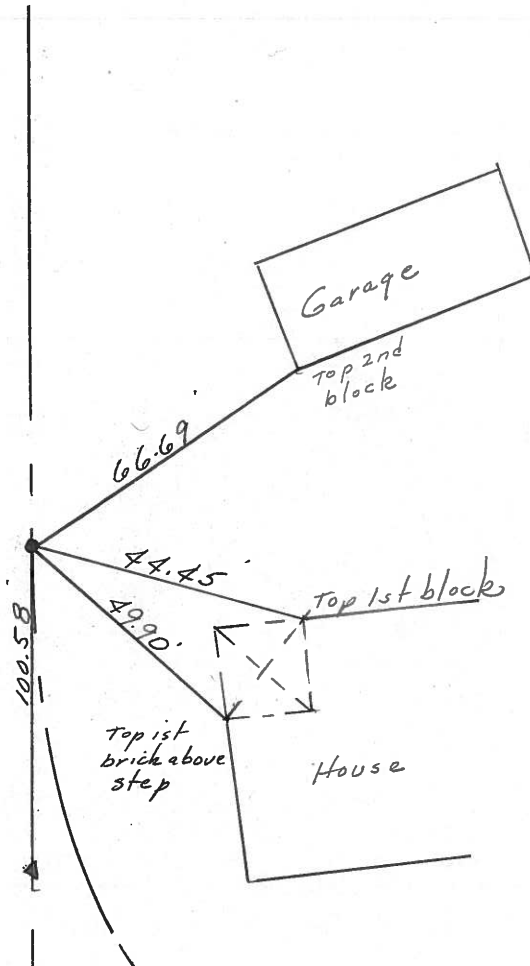
Geyman



23



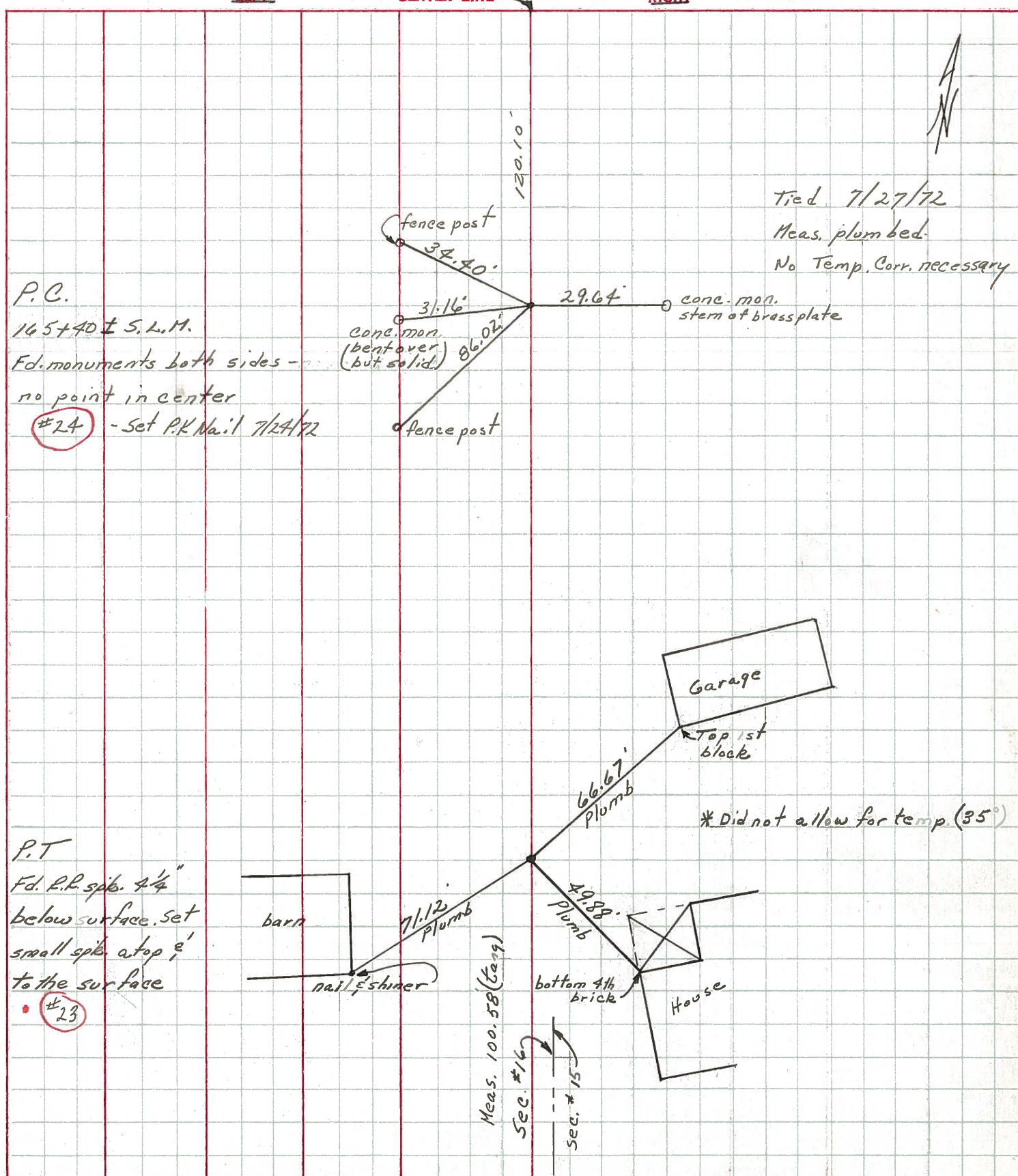
P.T.
Ed. bolt spike 1" below
surface. R.R. spike below
5 1/4" below surface.



PERSONNEL	TITLE	PERSONNEL	TITLE
Ash			
Cronin			
Epple			
Anderson			

COUNTY Seneca DATE 1/12/72
 S. R. # 19 WEATHER sunny-windy
 SEC. _____ TEMP. 35°

DESCRIPTION Ties for Control Points - Sen. Co. line - North to Bloomville JOB NO. _____



* Did not allow for temp (35°)