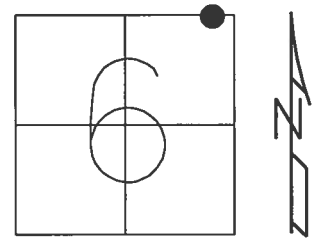


O.D.O.T. DISTRICT 2 SURVEY OFFICE

PERSONNEL \_\_\_\_\_ REFERENCE NO. 19 SHEET 13 OF 25

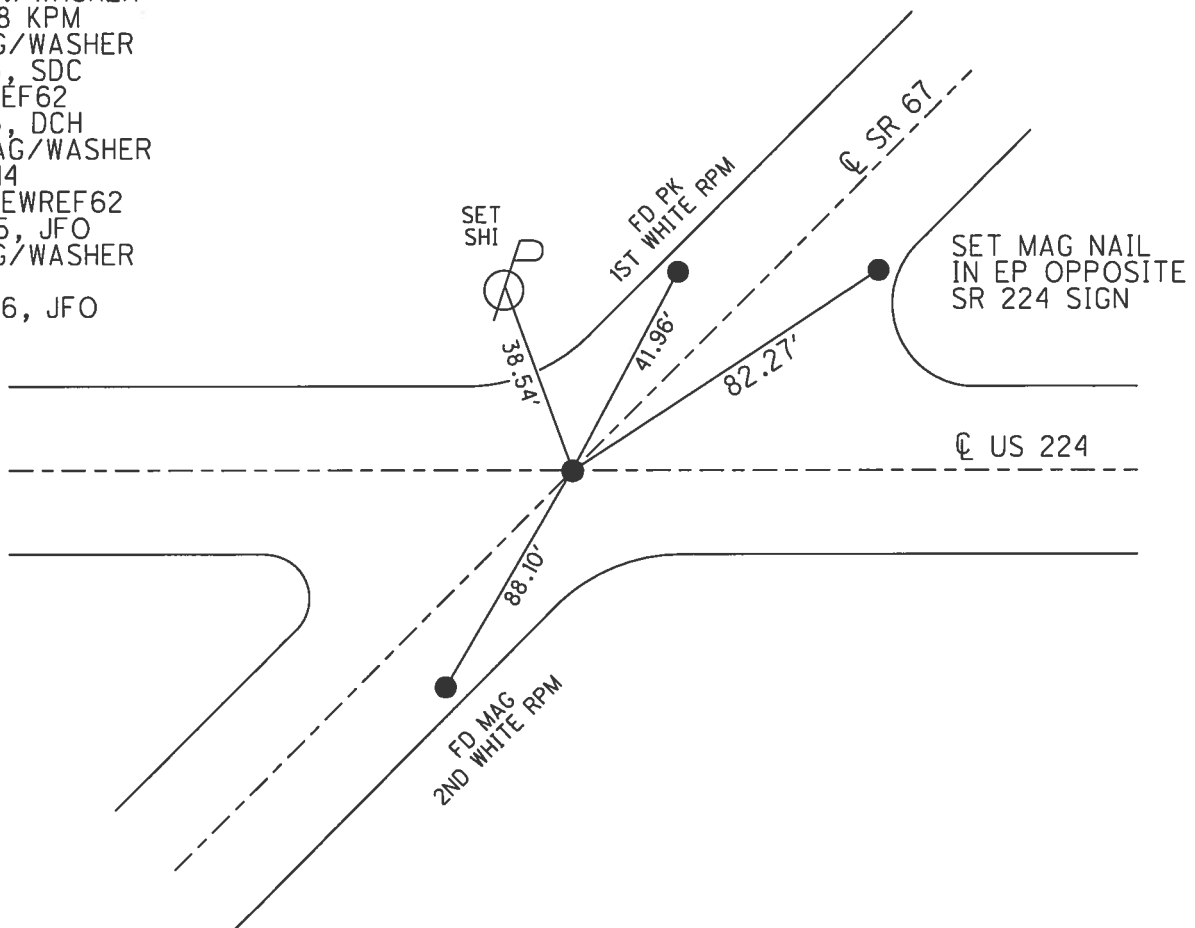
NOTES HOMAN DATE 9/8/14 ROUTE SR 67  
 H.C. LEU WEATHER FAIR COUNTY SENECA  
 R.C. HOMAN TEMP. 75° TOWNSHIP BLOOM  
 SECTION 6  
 T 1 N R 16 E

TYPE MONUMENT MAG/WASHER  
 ON SURFACE - ~~BELOW~~ ON  
 LEFT - ☉ PAV'T - RIGHT ON  
 - TO - EDGE PAVEMENT  
 S.L.M. 391+81.22



GRID: NORTHING: 515722.022 EASTING: 1815316.312

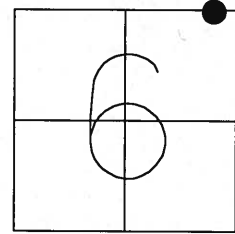
RECORD:  
 SET P.K./WASHER  
 10/12/94 MRC  
 FD P.K./WASHER  
 1/12/08 KPM  
 FD MAG/WASHER  
 1/15/13, SDC  
 GPS, REF62  
 1/16/13, DCH  
 SET MAG/WASHER  
 12/15/14  
 GPS, NEWREF62  
 7/13/15, JFO  
 FD MAG/WASHER  
 REF19  
 2/22/16, JFO



O.D.O.T. DISTRICT 2 SURVEY OFFICE

PERSONNEL \_\_\_\_\_ REFERENCE NO. 19 SHEET 1 OF 18  
 NOTES HOMAN DATE 9/8/14 ROUTE SR 67  
 H.C. LEU WEATHER FAIR COUNTY SENECA  
 R.C. HOMAN TEMP. 75° TOWNSHIP BLOOM  
 SECTION 6  
 T 1 N R 16 E

TYPE MONUMENT MAG/WASHER  
 ON SURFACE - ~~BELOW~~ ON  
 LEFT - CL PAV'T - RIGHT ON  
TO EDGE PAVEMENT  
 S.L.M. 391+77

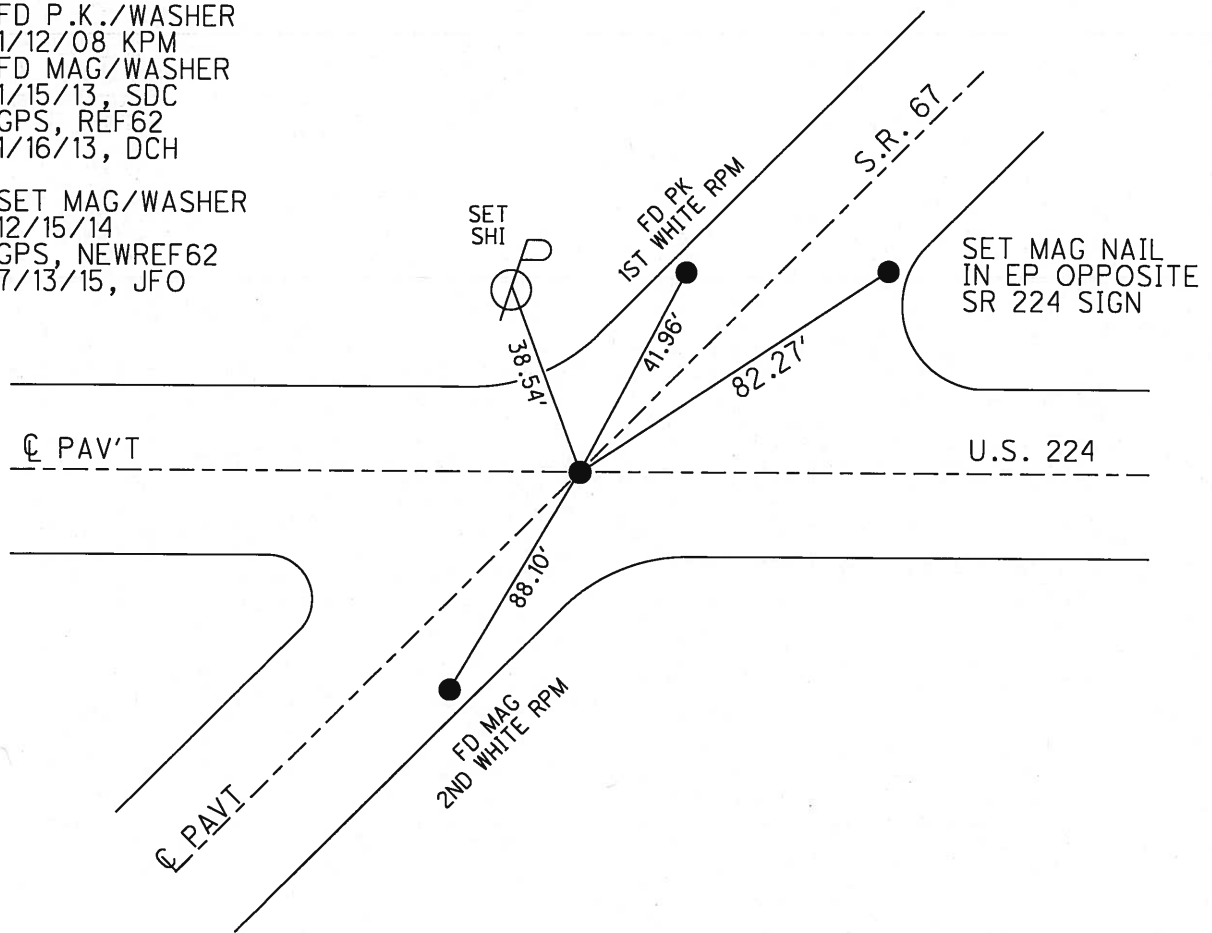


GRID: NORTHING: 515722.039 EASTING: 1815316.305

SET P.K./WASHER  
 10/12/94 MRC

FD P.K./WASHER  
 1/12/08 KPM  
 FD MAG/WASHER  
 1/15/13, SDC  
 GPS, REF62  
 1/16/13, DCH

SET MAG/WASHER  
 12/15/14  
 GPS, NEWREF62  
 7/13/15, JFO



O.D.O.T. DISTRICT 2 SURVEY OFFICE

9 of 18

PERSONNEL

REFERENCE NO. 62  
#19 ON SR 67

SHEET ~~16~~ OF ~~16~~

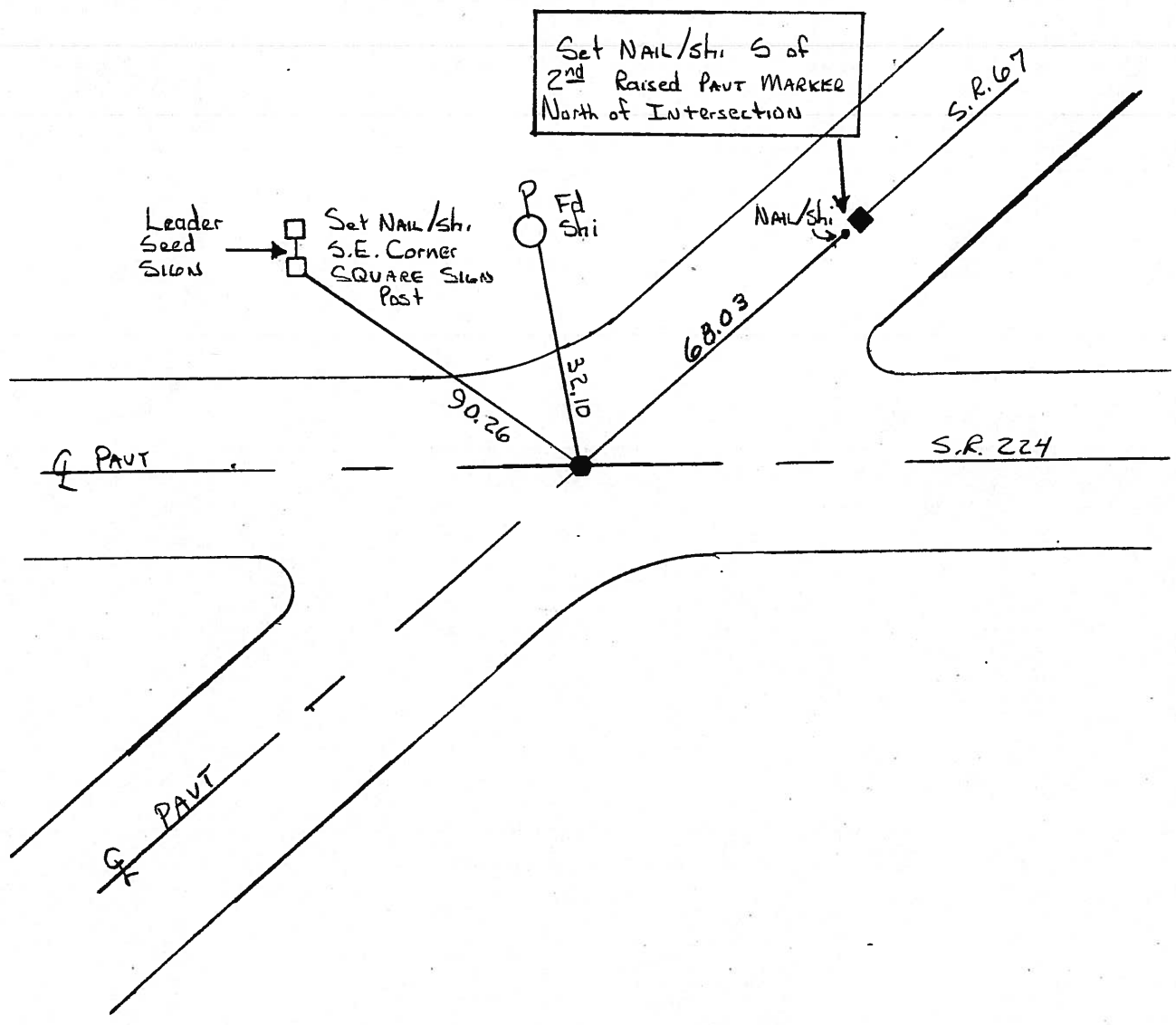
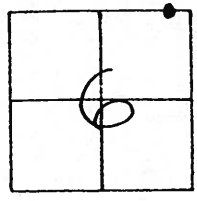
NOTES CHANEY  
H.C. RIPPLE  
R.C. BARBOUR

DATE 5-2-94  
WEATHER FAIR  
TEMP. +62

ROUTE S.R. 224  
COUNTY SENECA  
TOWNSHIP Bloom  
SECTION 6  
T.L. NR 16 E

Set P.K./WASHER  
10-12-94  
MRC

TYPE MONUMENT P.K. SHANK  
ON SURFACE - ~~BELOW~~ Yes  
~~LEFT - & PAVT. - RIGHT~~ Yes - BOTH  
TO EDGE PAVEMENT  
S.L.M. 1047+90



County Seneca S.R. #67

Date 6-16-81

Township Bloom & scipio

Weather Sunny

Section 31

Temp. 85°

T2N, R1E

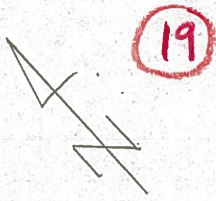
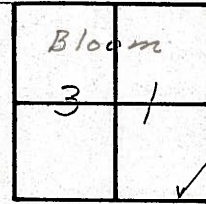
Personnel S. HOFFMAN

HOUSEHOLDER

Barbour

\_\_\_\_\_

\_\_\_\_\_



§ S.R. #67

SHI 5/5

SHI w/s

32.11'

102.32'  
~~101.88'~~

U.S. # 224

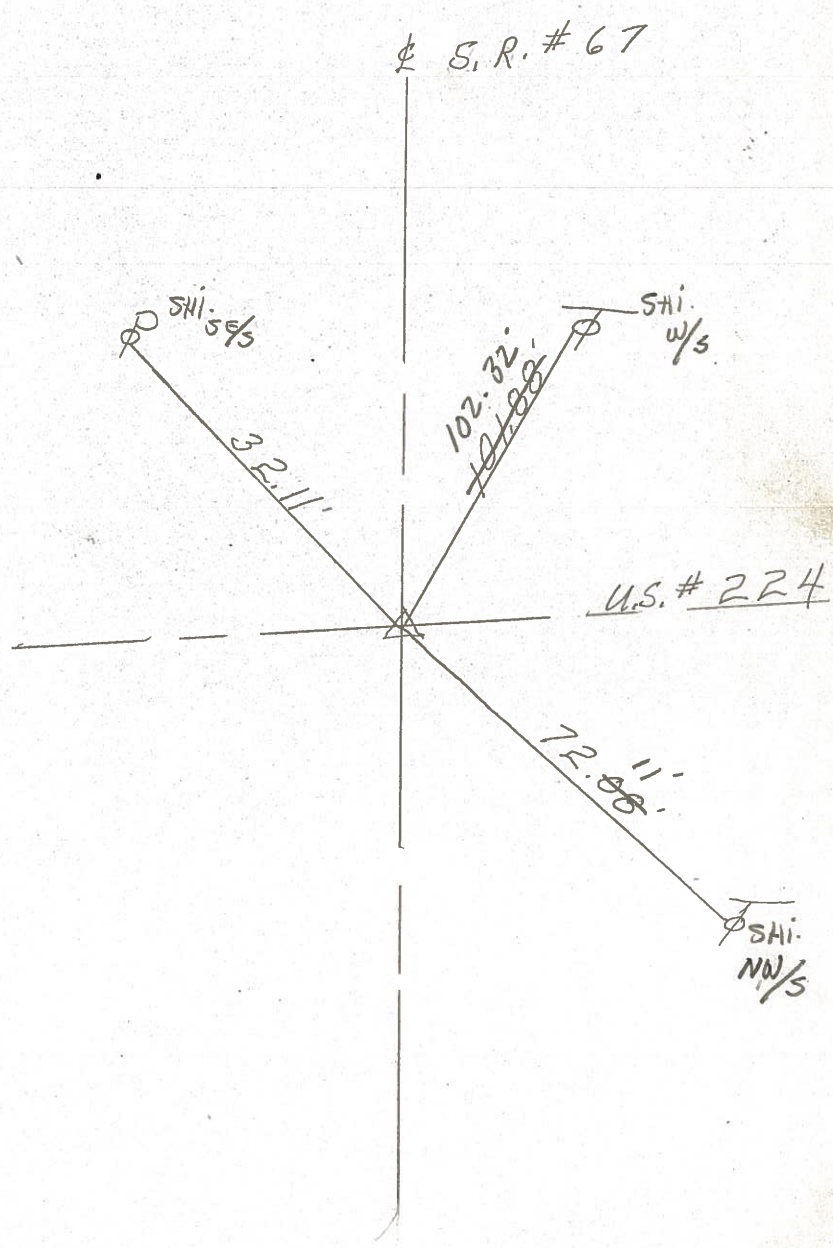
391 + 39.57

R.R. spk. on E R/w

FD. SMALL BOLT SPIKE  
@ SURFACE CTR. PAUT.

72.11'  
~~72.08'~~

SHI NW/S



County Semra S.R. #67

Date 7-12-79 **6-16-81**

Township Bloom

Weather Sunny ✓

Section 31

Temp. 78° **+85°**

T2N, R16E

Personnel Schwartz **H**

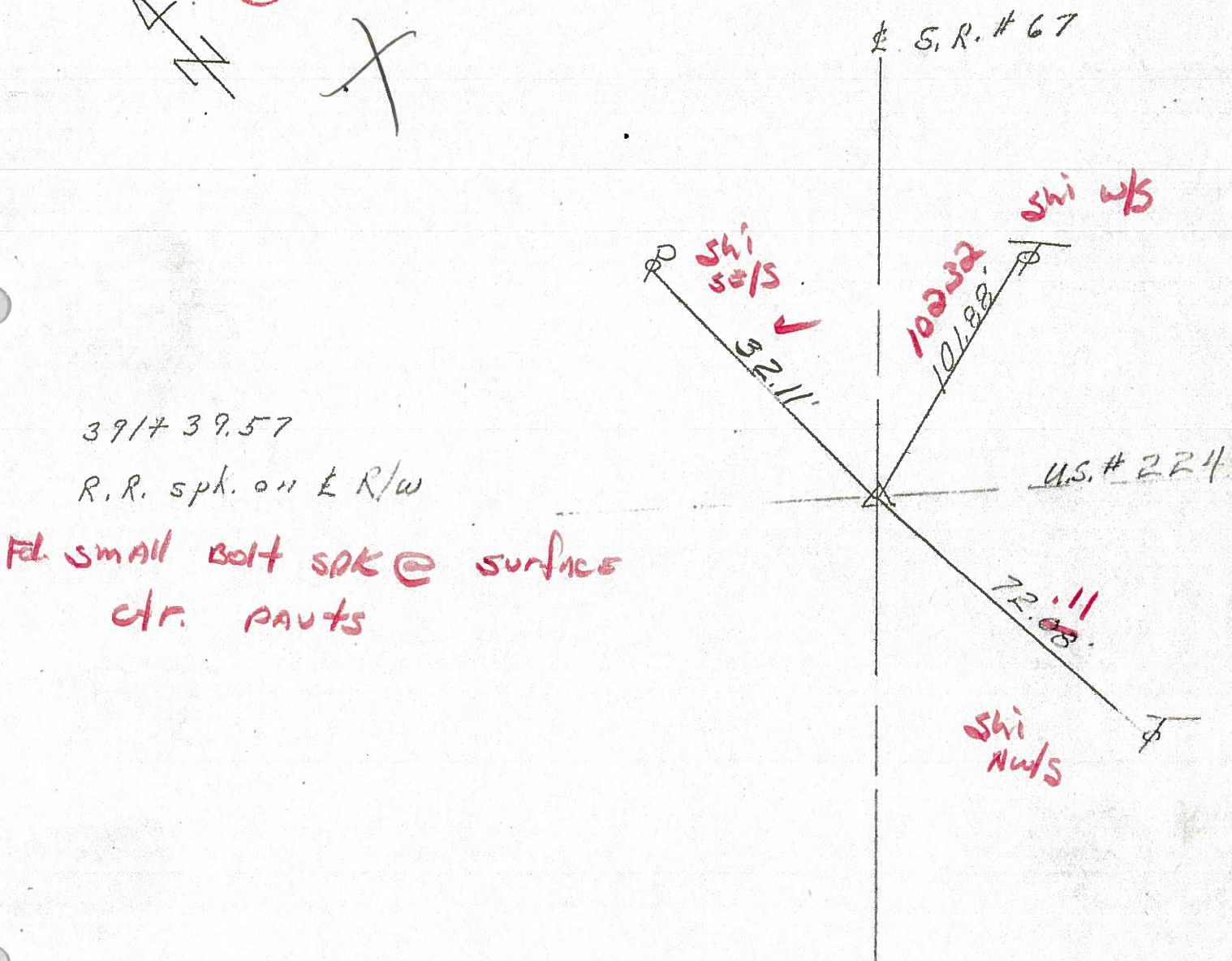
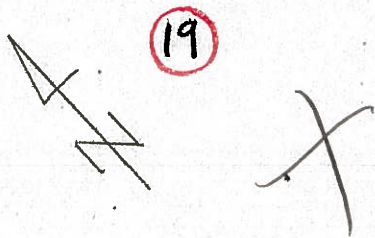
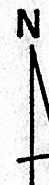
Mosser **H**

Birchour

\_\_\_\_\_

\_\_\_\_\_

Bloom	
3	1



3917 39.57

R.R. spk. on E R/W

**Fd. small bolt spk @ surface  
ctr. parts**

PERSONNEL TITLE PERSONNEL TITLE

COUNTY Seneca DATE 12-21-68

S. R. # 67 WEATHER

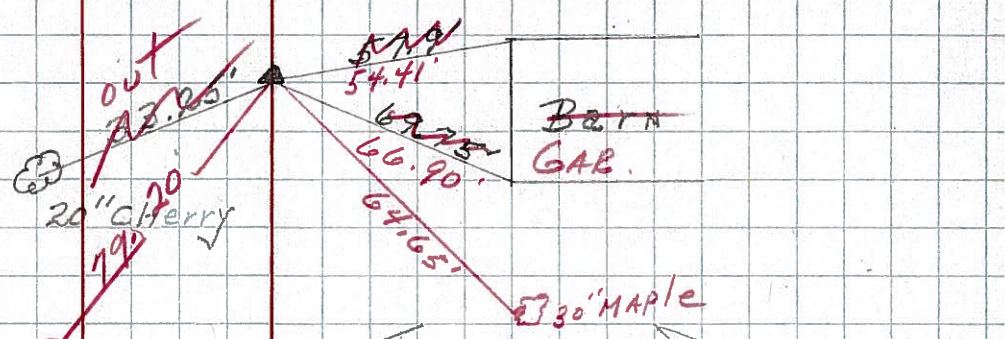
SEC TEMP

DESCRIPTION LEFT CENTER LINE RIGHT JOB NO.

20

FOUND 2/11/69  
STA. 401+34.7  
R.R. SPIKE on E R/W  
North of R.R.  
spk 5 1/2 below surface

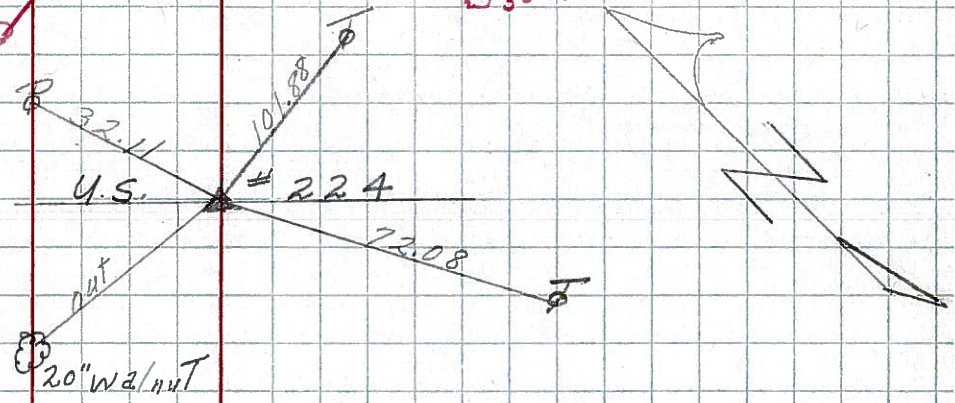
8422 17" catalpa



19

STA. 392+29.57  
R.R. SPIKE on E of R/W  
Intersection of US # 224  
& SR # 67

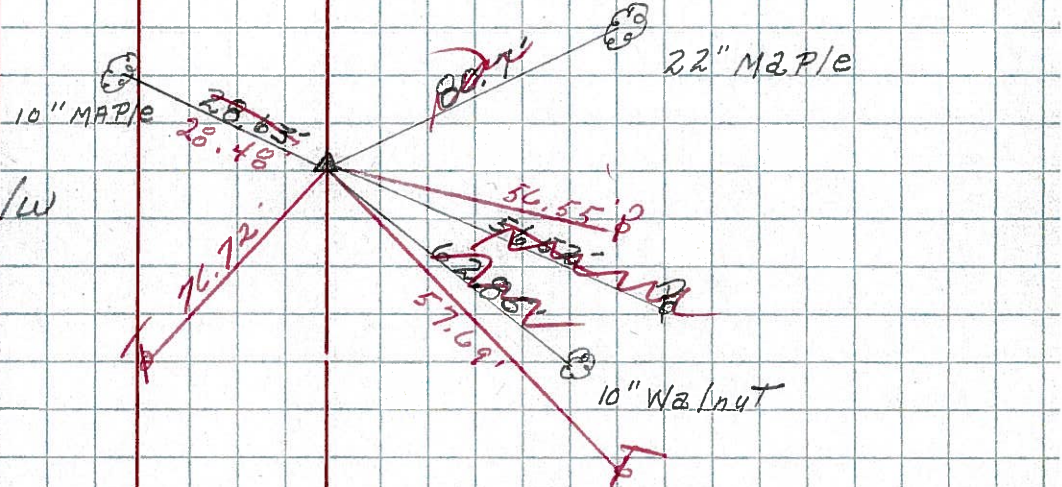
~~226~~  
8421



17

FOUND 2/11/69  
C.R. # 16  
STA. 328+80.85  
R.R. SPIKE on E of R/W  
5" below surface

8420



16

FOUND 2/11/69  
STA. 303+56.5  
R.R. SPIKE on E of R/W  
5" below surface

~~282~~  
8419

