

O.D.O.T. DISTRICT 2 SURVEY OFFICE (USE ONLY)

PERSONNEL

REFERENCE NO. 48

SHEET 1 OF 19

NOTES RHOADES

DATE 5/26/17

ROUTE SR 224

H.C. O'DONNELL

WEATHER CLOUDY

COUNTY SENECA

R.C. CARSON

TEMP. 63°

TOWNSHIP CLINTON

DWG BY MILLER PID 102819

SECTION 32

T 2 N R 15 E

TYPE MONUMENT MAG/WASHER

ON SURFACE - ~~BELOW~~ ON

OFFSET Q PAVEMENT ON LT : RT

- TO - EDGE PAVEMENT

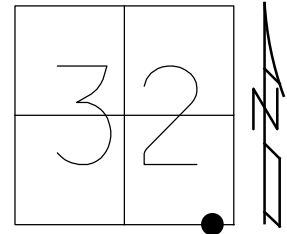
STATION: 778+27.2

HORIZ.DATUM: NAD83 (2011)

GEOID: (2012A)

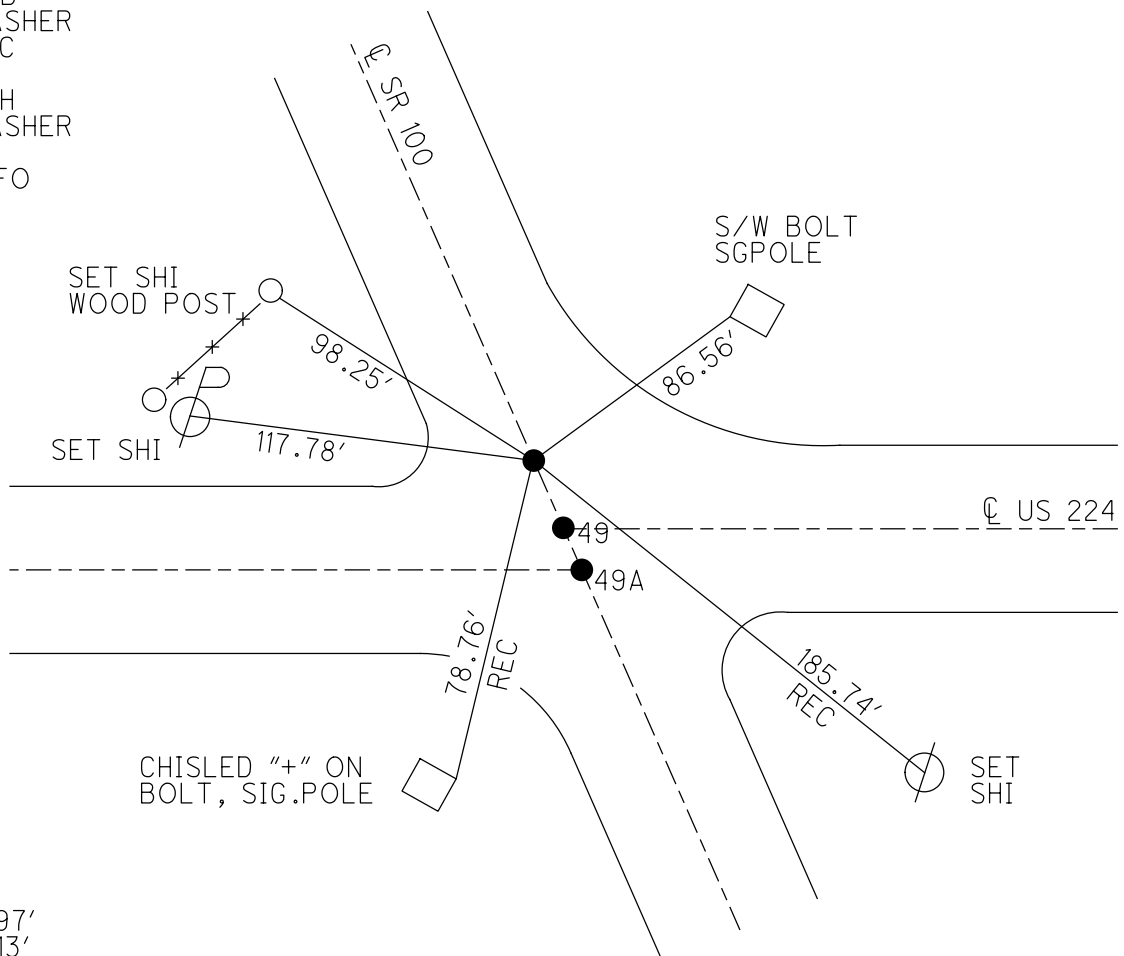
GRID: NORTHING: 515827.359

EASTING: 1788402.382



RECORD: TWP. LINE
 FD R.R. SPIKE
 OVER STONE
 SET MAG/WASHER
 8-18-04, MB
 FD MAG/WASHER
 1-15-13, SDC
 REF48
 1-16-13, DCH
 FD MAG/WASHER
 REF48
 5-26-17, JFO

NOTE: REF 22 SR 100



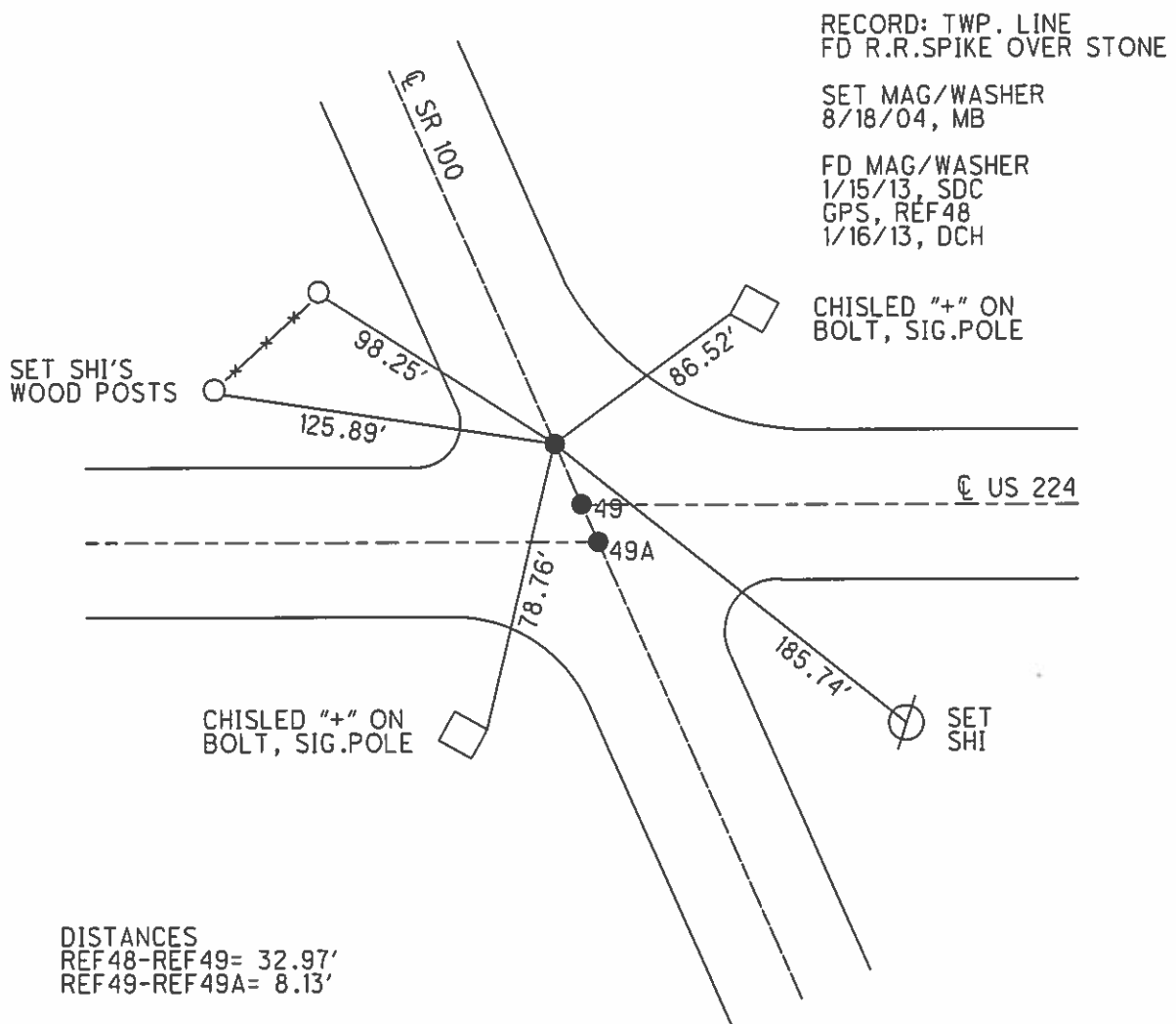
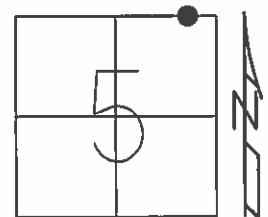
DIST.
 48-49= 32.97'
 49-49A= 8.13'

O.D.O.T. DISTRICT 2 SURVEY OFFICE (USE ONLY)

PERSONNEL	REFERENCE NO.	48	SHEET	1	OF	19
NOTES	NUHFER	DATE	4/28/04	ROUTE	SR 224	
H.C.	HOMAN	WEATHER	CLOUDY	COUNTY	SENECA	
R.C.	ARMS	TEMP.	40°	TOWNSHIP	EDEN	
	HOOKER			SECTION	5	
				T	N	R 15 E

TYPE MONUMENT P.K./WASHER
~~ON SURFACE~~ - BELOW 2"
 LEFT - ☉ PAV'T - RIGHT -
 TO EDGE PAVEMENT
 S.L.M. 778+27.2

Grid: Northing: 515827.429 Easting: 1788402.327



O.D.O.T. DISTRICT 2 SURVEY OFFICE

PERSONNEL

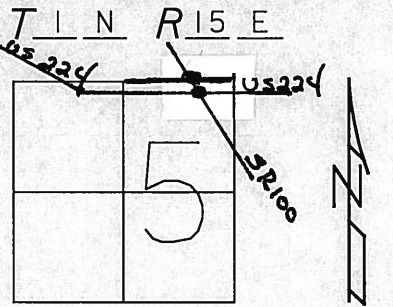
NOTES _____ NUHFER _____
 H.C. _____ HOMAN _____
 R.C. _____ ARMS _____
 _____ HOOKER _____

REFERENCE NO. $\frac{48}{49}$
 $\frac{49}{49-A}$

DATE 4-28-04
 WEATHER CLOUDY
 TEMP. 40°

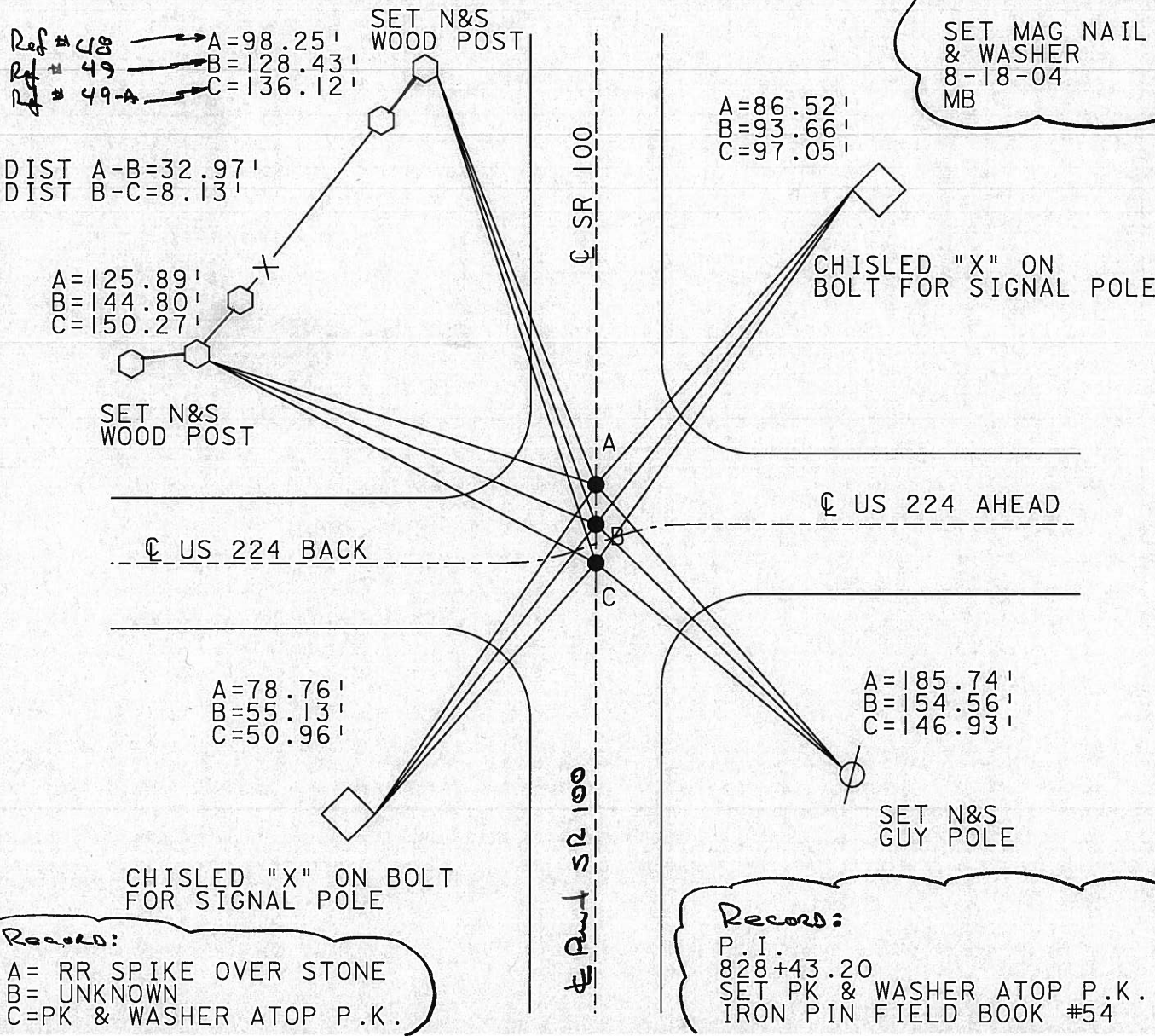
SHEET 26 OF 26

ROUTE US 224
 COUNTY SENECA
 TOWNSHIP EDEN
 SECTION 5



TYPE MONUMENT PK & WASHERS ALL
 ON SURFACE - BELOW 2" ALL
 LEFT - Q PAVT - RIGHT _____
 _____ TO _____ EDGE PAVEMENT
 S.L.M. $14.74 = 778+27$

(48)



Records:
 A= RR SPIKE OVER STONE
 B= UNKNOWN
 C=PK & WASHER ATOP P.K.

Records:
 P.I.
 828+43.20
 SET PK & WASHER ATOP P.K.
 IRON PIN FIELD BOOK #54