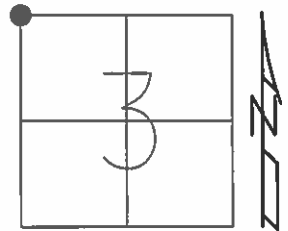


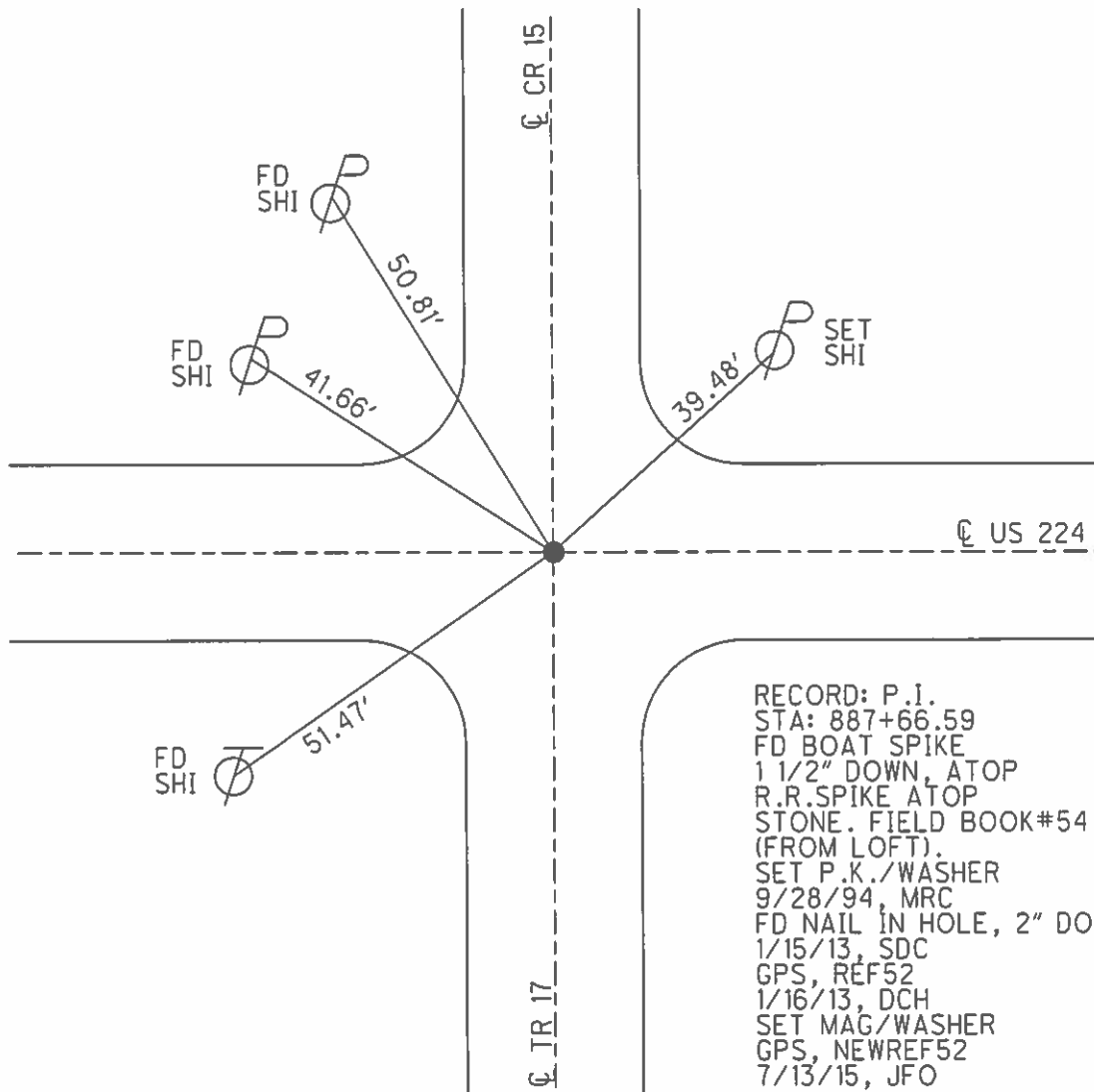
O.D.O.T. DISTRICT 2 SURVEY OFFICE (USE ONLY)

PERSONNEL _____ REFERENCE NO. 52 SHEET 10 OF 19
 NOTES NUHFER DATE 9/5/14 ROUTE SR 224
 H.C. LEU WEATHER SUNNY COUNTY SENECA
 R.C. RHOADES TEMP. 72° TOWNSHIP EDEN
 _____ SECTION 3
 _____ T 1 N R 15 E

TYPE MONUMENT P.K. SHANK
~~ON SURFACE~~ - BELOW 2"
 LEFT - ☉ PAV'T - RIGHT ON
- TO - EDGE PAVEMENT
 S.L.M. 837+51.25



Grid: Northing: 515788.499 Easting: 1794338.898



RECORD: P.I.
 STA: 887+66.59
 FD BOAT SPIKE
 1 1/2" DOWN, ATOP
 R.R. SPIKE ATOP
 STONE. FIELD BOOK#54.
 (FROM LOFT).
 SET P.K./WASHER
 9/28/94, MRC
 FD NAIL IN HOLE, 2" DOWN
 1/15/13, SDC
 GPS, REF52
 1/16/13, DCH
 SET MAG/WASHER
 GPS, NEWREF52
 7/13/15, JFO

O.D.O.T. DISTRICT 2 SURVEY OFFICE

PERSONNEL _____

REFERENCE NO. 52

SHEET 6 OF 16

NOTES LOEHRKE

H.C. RIPPLE

R.C. BARBOUR

DATE 5-2-94

WEATHER FAIR

TEMP. +54

ROUTE 22A

COUNTY SENECA

TOWNSHIP EDEN/CLINTON

SECTION 3, 4, 33+34

T² N R 15 E

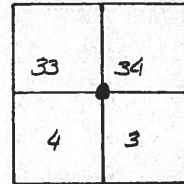
TYPE MONUMENT PK/WASHER

ON SURFACE - BELOW 1 1/2"

LEFT - ℄ PAV'T. - RIGHT ℄ PYMT

TO EDGE PAVEMENT

S.L.M. 837+63

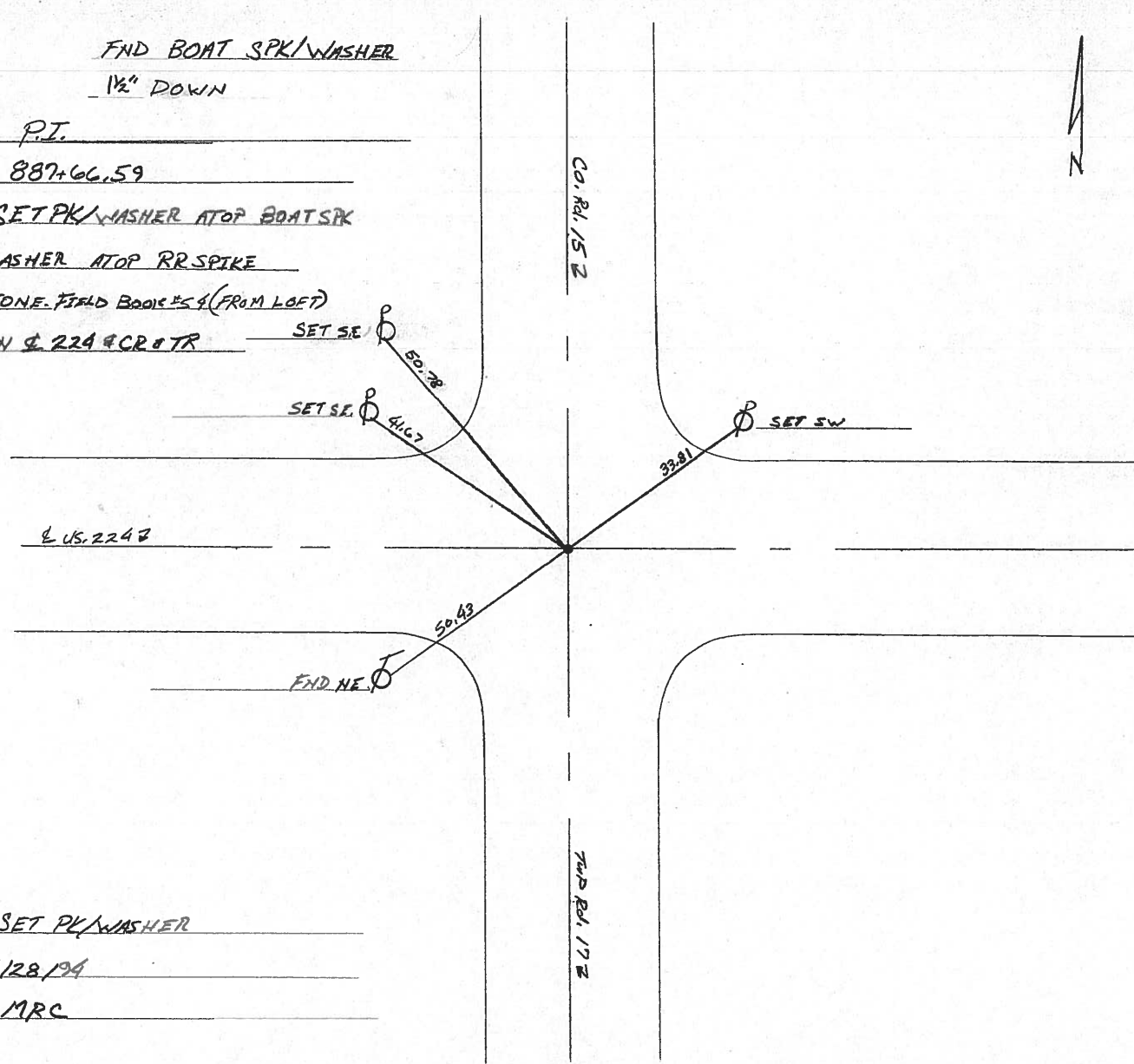


FND BOAT SPK/WASHER
1 1/2" DOWN

P.I.
887+66.59

SET PK/WASHER ATOP BOAT SPK
WASHER ATOP RR SPIKE

STONE FIELD BOOK #5 (FROM LEFT)
ON ℄ 224 @ CR @ TR



SET PK/WASHER
9/28/94
MRC

TWP RD. 17 E

County Seneca S.R. # 224

Date 6/23/82

Township Eden, Clinton

Weather sunny

Section Corner 34, 33 & 34 (Common?)

Temp. 68°

T1N, R15E

Personnel Cronin

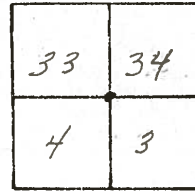
Ripple

Geyman

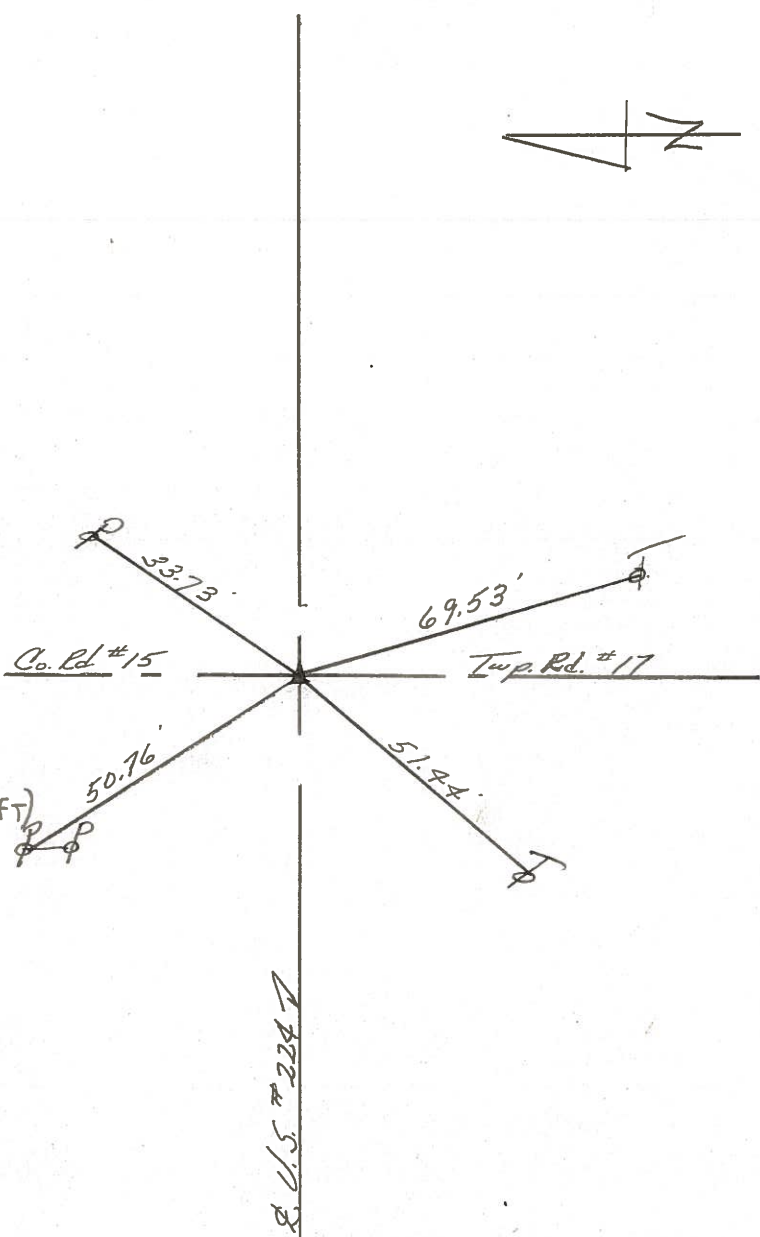
Mosser

Barbour

#52

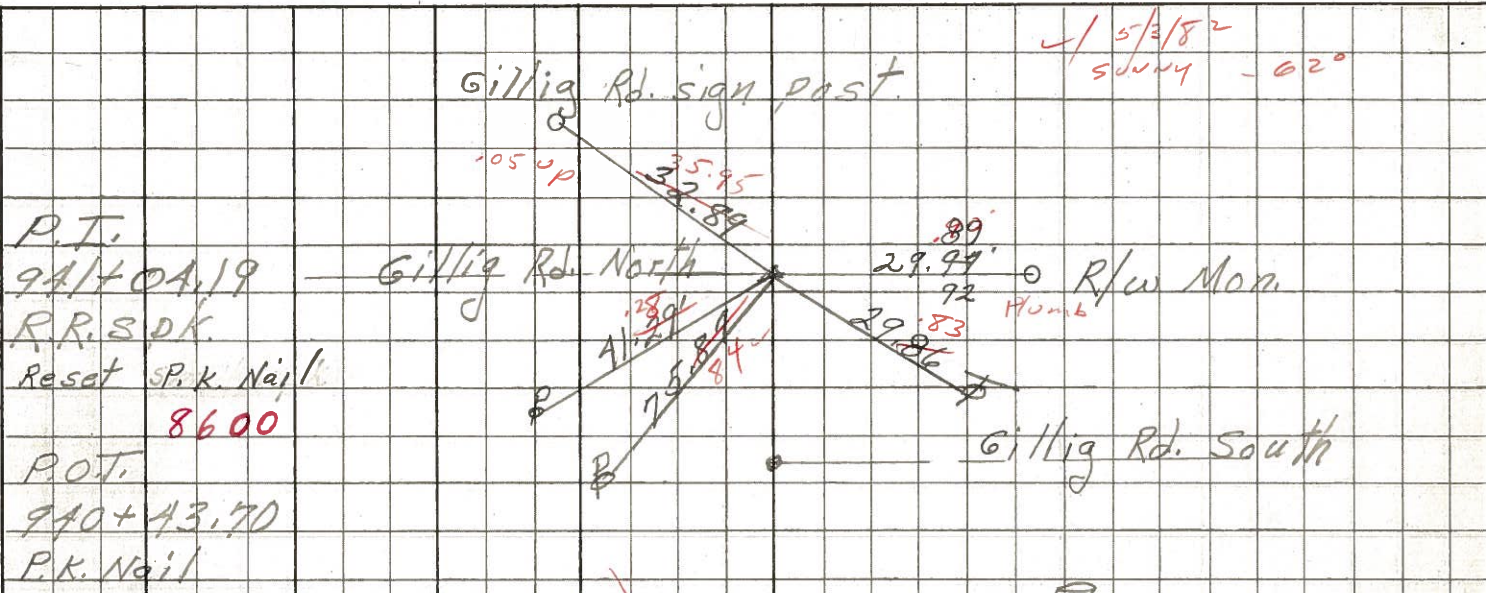


P.I.
887+66.59
set P.K. & washer atop boat
spike & washer atop R.R. spike
 STONE - FIELD BOOK #54 (FROM LOFT)



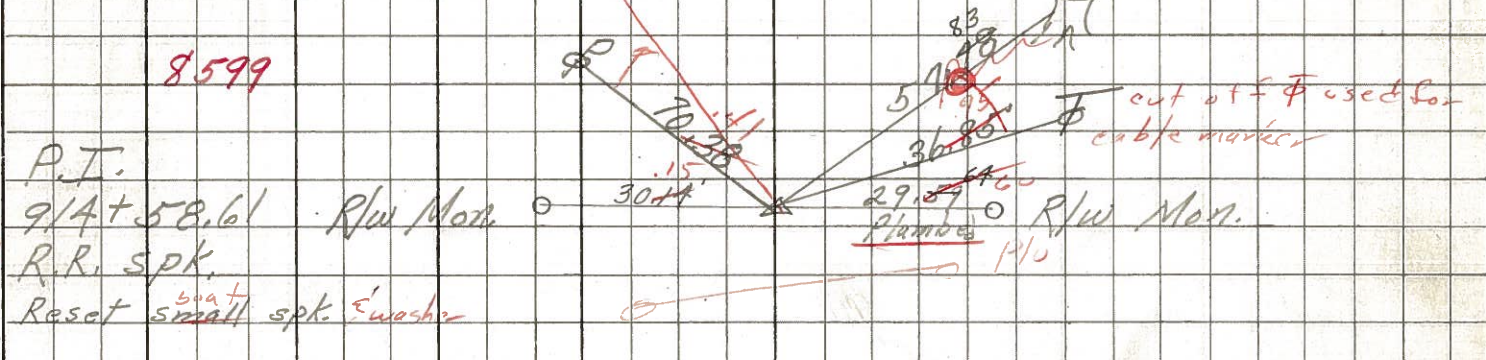
PERSONNEL TITLE PERSONNEL TITLE COUNTY Seneca DATE 3-19-68
 Schneider Potts
 Mosser
 Barbour
 Redding
 S. R. U.S. #224 WEATHER Fair
 SEC. S.R.#100 to Attic TEMP. 65°
 DESCRIPTION Ties for Control Points JOB NO.

(54)



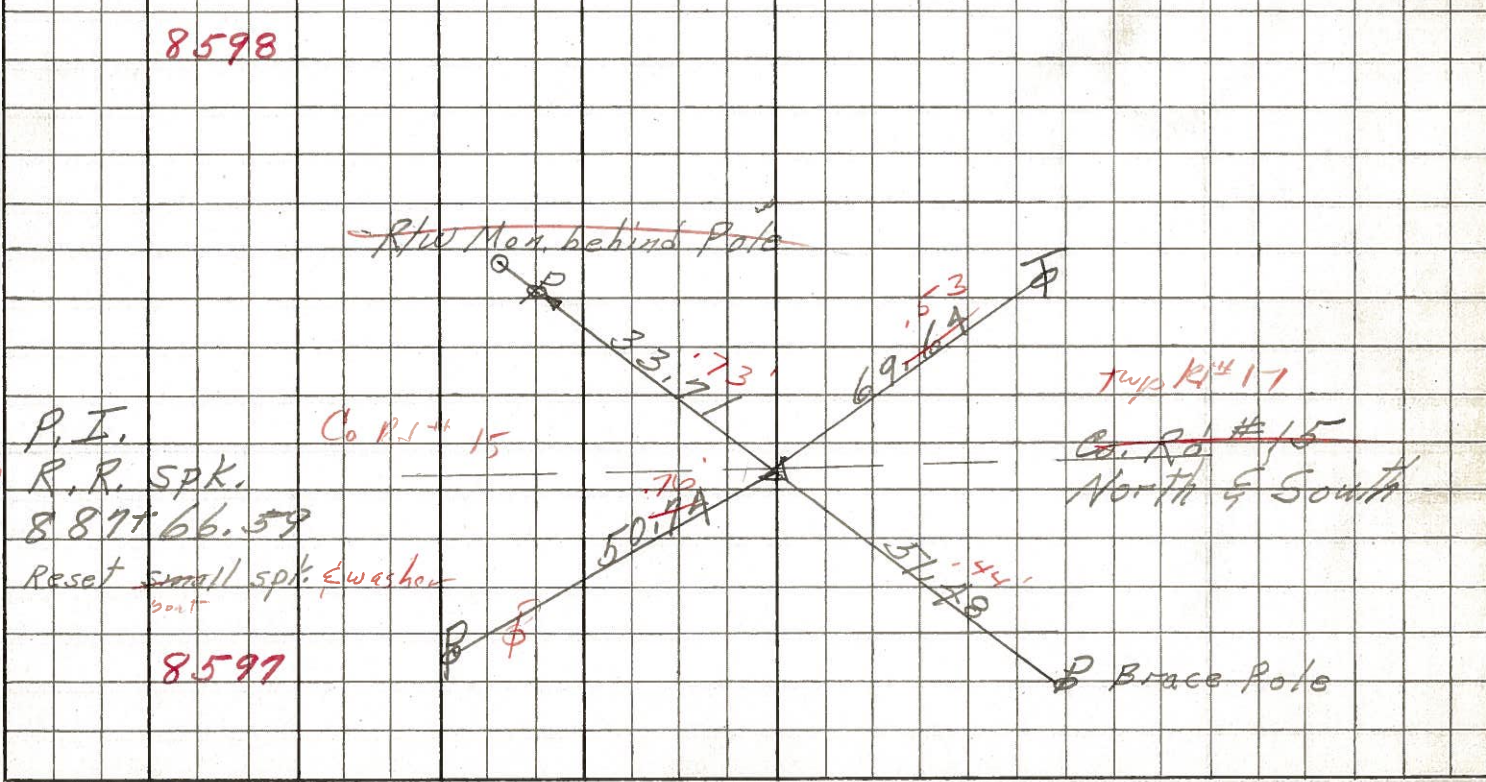
P.T.
 941+04.19
 R.R. SPK.
 Reset P.K. Nail
 8600
 P.O.T.
 940+43.70
 P.K. Nail

(53)



P.T.
 9/4+58.61
 R/w Mon.
 R.R. SPK.
 Reset small spk. Ewasher
 8598

(52)



P.T.
 887+66.59
 R.R. SPK.
 Reset small spk. Ewasher
 8597

PERSONNEL TITLE PERSONNEL TITLE

COUNTY Seneca

DATE 11-24-53

S. R. 224

WEATHER

SEC. A

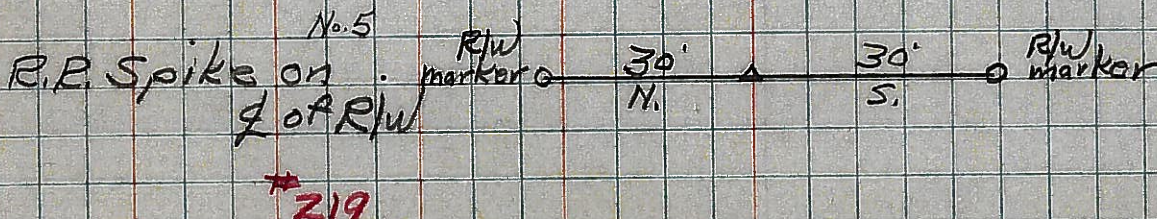
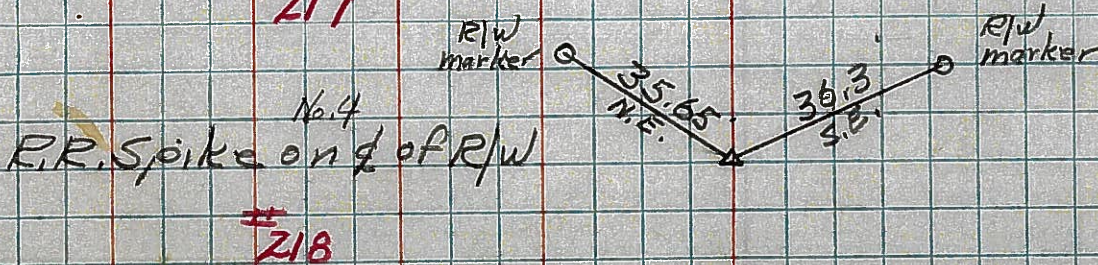
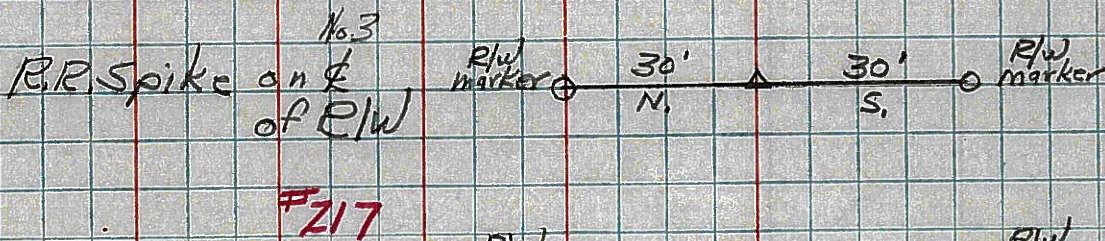
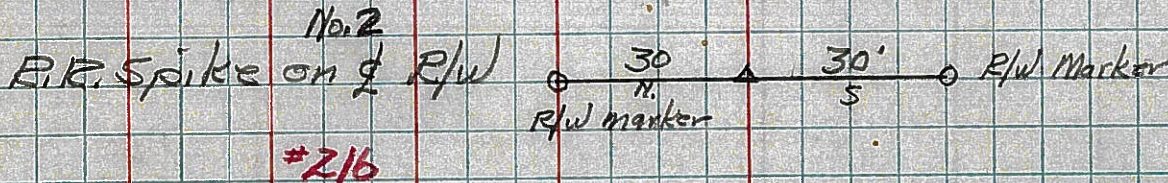
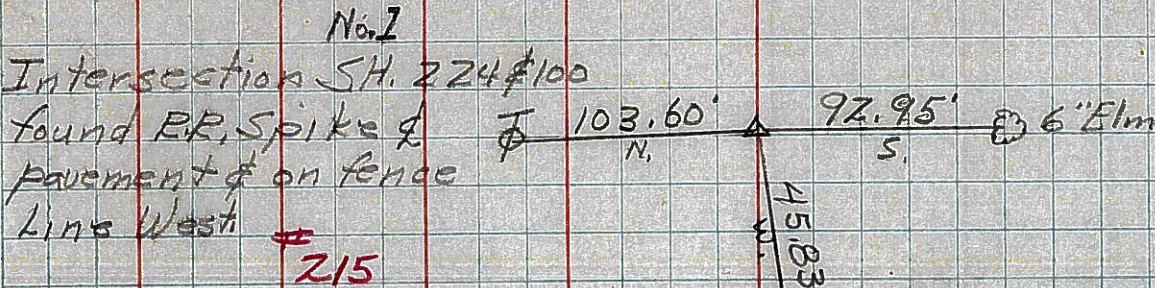
TEMP.

DESCRIPTION S.H. 272 From intersection SE 1/4 to SE 1/4 19

JOB NO.

N

S.H. 272 Sec. A. Starting East of the intersection of S.H. 199 on E of S.H. 272 Sec. A. No stationing on this section. Plat showing control points by No. following.



50

51

52

53

PERSONNEL TITLE PERSONNEL TITLE

COUNTY Seneca DATE 11-24-53

S. R. 224 WEATHER

SEC. A TEMP.

DESCRIPTION S.H. 272 From the intersection of S.E. 100 to S.E. 19

LEFT CENTER LINE RIGHT JOB NO.

S.H. 272 Sec. A. Starting East of the intersection of S.H. 199 on E of S.H. 272 Sec. A. No stationing on this section. Plat showing control points by No. following.

No. 1
 Intersection of S.P. 224 & 100
 Found E.E. Spike on E pavement & on fence line West
 #215

103.60' N.
 92.95' S.
 45.83'
 6" Elm
 R.R. Spike & Part of fence line
 45.83' W. Shi. P. Pole
 103.60' N. Shi. T. Pole
 92.95' S. 6" Elm
 Did not Find

No. 2
 E.E. Spike on E of R/W
 #216

30' N. Elm marker
 30' S. Elm marker
 Did not Find

No. 3
 E.E. Spike on E of R/W
 #217

30' N. Elm marker
 30' S. Elm marker
 Did not Find

No. 4
 E.E. Spike on E of R/W
 #218

35.65' N. Elm marker
 30.3' S. Elm marker
 55'

No. 5
 E.E. Spike on E of R/W
 #219

30' N. Elm marker
 30' S. Elm marker

50

51

52

53