

O.D.O.T. DISTRICT 2 SURVEY OFFICE (USE ONLY)

PERSONNEL _____ REFERENCE NO. 61 SHEET 19 OF 19
 NOTES HOMAN DATE 9/9/14 ROUTE SR 224
 H.C. LEU WEATHER SUNNY COUNTY SENECA
 R.C. HOMAN TEMP. 75° TOWNSHIP BLOOM
 SECTION 6
 T 1 N R 16 E

TYPE MONUMENT P.K./WASHER

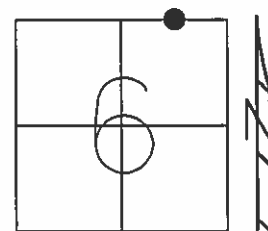
~~ON SURFACE~~ - BELOW 2"

LEFT - ☉ PAV'T - ~~RIGHT~~ 0.5'

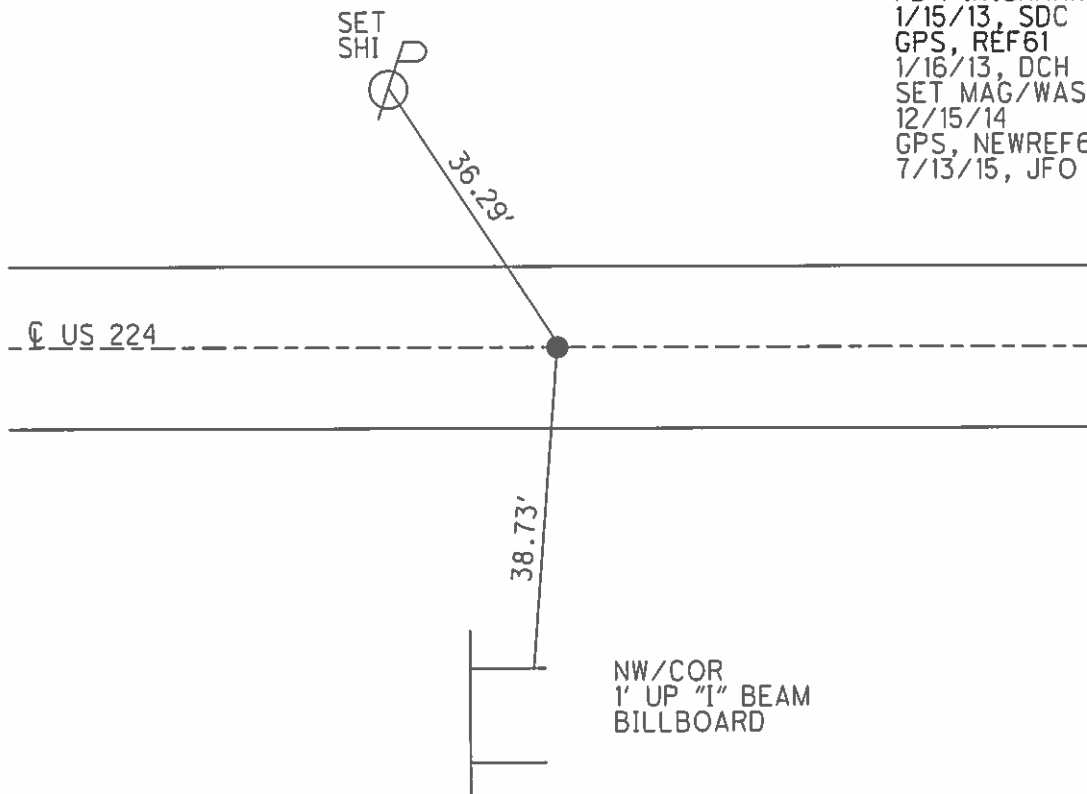
9.0' TO LT EDGE PAVEMENT

S.L.M. 1038+86.49

Grid: Northing: 515722.254 Easting: 1814473.687



RECORD: P.O.T
 STA: 1089+01.55
 P.K.NAIL ATOP
 P.K.NAIL ATOP
 BOAT SPIKE ATOP
 SET P.K./WASHER
 10/12/94, MRC
 FD P.K.SHANK
 1/15/13, SDC
 GPS, REF61
 1/16/13, DCH
 SET MAG/WASHER
 12/15/14
 GPS, NEWREF61
 7/13/15, JFO



O.D.O.T. DISTRICT 2 SURVEY OFFICE

PERSONNEL _____

REFERENCE NO. 61

SHEET 15 OF 16

NOTES CHANEY

H.C. RIPPLE

DATE 5-2-94

ROUTE S.R. 224

R.C. BARBOUR

WEATHER FAIR

COUNTY SENECA

TEMP. 62

TOWNSHIP Bloom

SECTION 6

T. 1 N R. 16 E

TYPE MONUMENT P.K. / WASHER

Reset
10-12-94

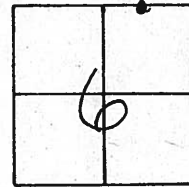
M.R.C.

ON SURFACE - ~~BELOW~~ Yes

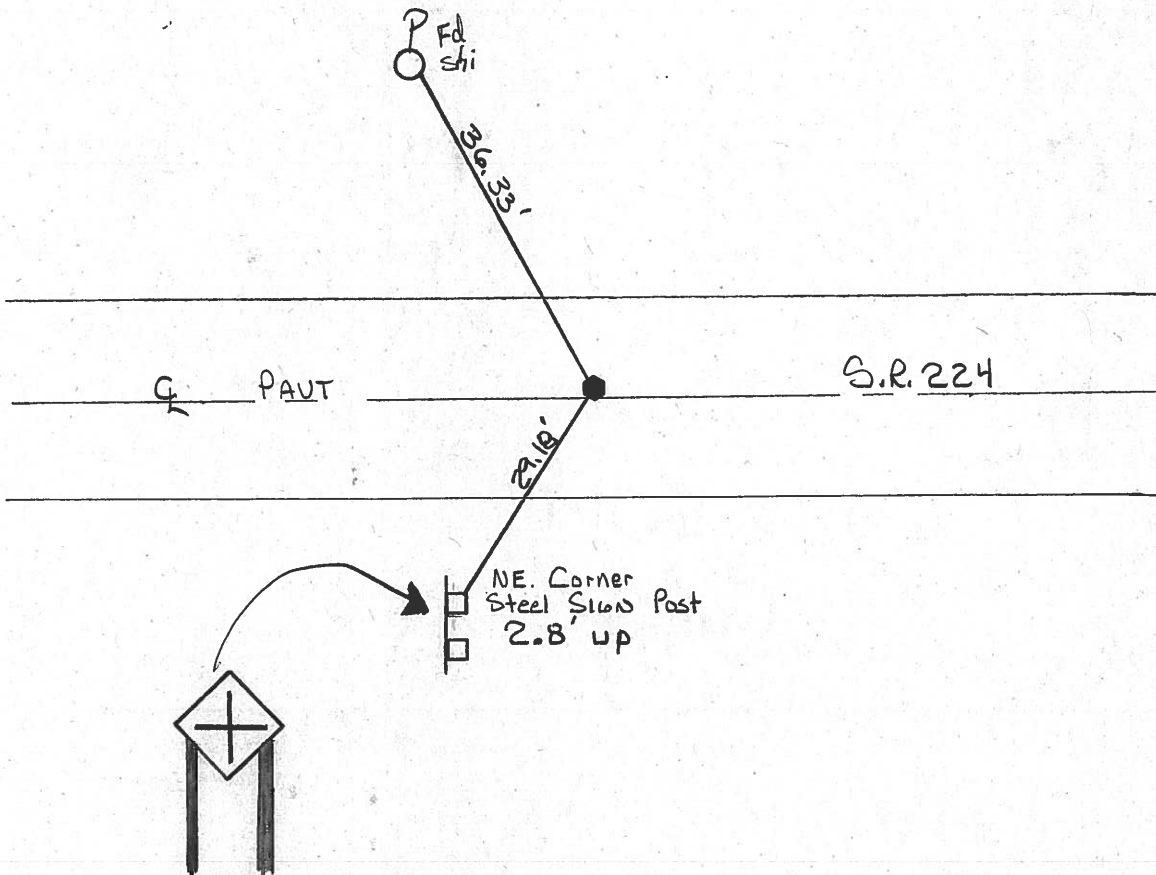
LEFT- & PAV'T. - ~~RIGHT~~ 0.5' Lt

9.0' TO Lt EDGE PAVEMENT

S.L.M. 1039+45



REC POT Sta 1089+01.55
P.K atop P.K. atop BOAT SPIKE



ODOT. DISTRICT 2 SURVEY OFFICE

SHEET 15 OF

HOFFMAN & CREW

County Seneca S.R. #224

Date 6/24/82

4-27-83

Township Bloom

Weather sunny

CLEAR

Section 6

Temp. 66°

+65

T1N, R16E

Personnel Cranin

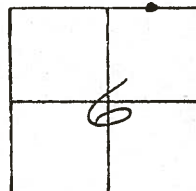
Ripple

Geyman

Mosser

Barbour

#61

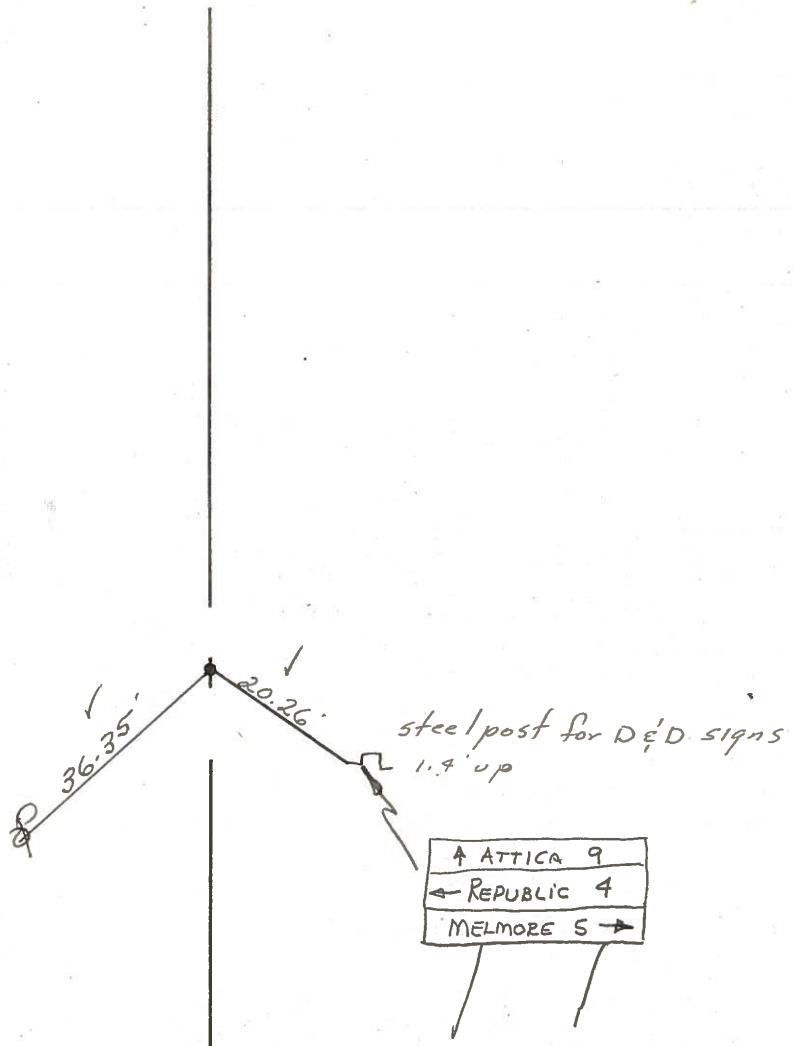


P.O.T.

1089+01.55

set P.K. & washer atop
boat spike

NOTE:
S.L.M. FROM BRIDGE
MAKES THIS POINT
1090+28.04

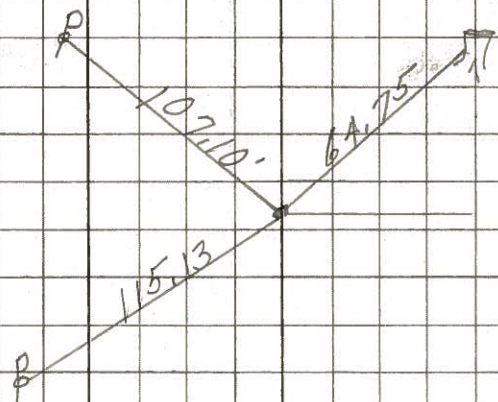


PERSONNEL	TITLE	PERSONNEL	TITLE	COUNTY	DATE
<u>Schneider</u>		<u>Potts</u>		<u>Seneca</u>	<u>7-30-68</u>
<u>Mosser</u>				S. R. <u>U.S. # 224</u>	WEATHER <u>Fair</u>
<u>Barbour</u>				SEC. <u>S.R. #100 to Africa</u>	TEMP. <u>40°</u>
<u>Redding</u>					
DESCRIPTION	<u>Ties for Control Points</u>				JOB NO.
	LEFT	CENTER LINE	RIGHT		

(63-A)

P.O.T.
R.R. spk. 4" down
1100+
Reset small spk.

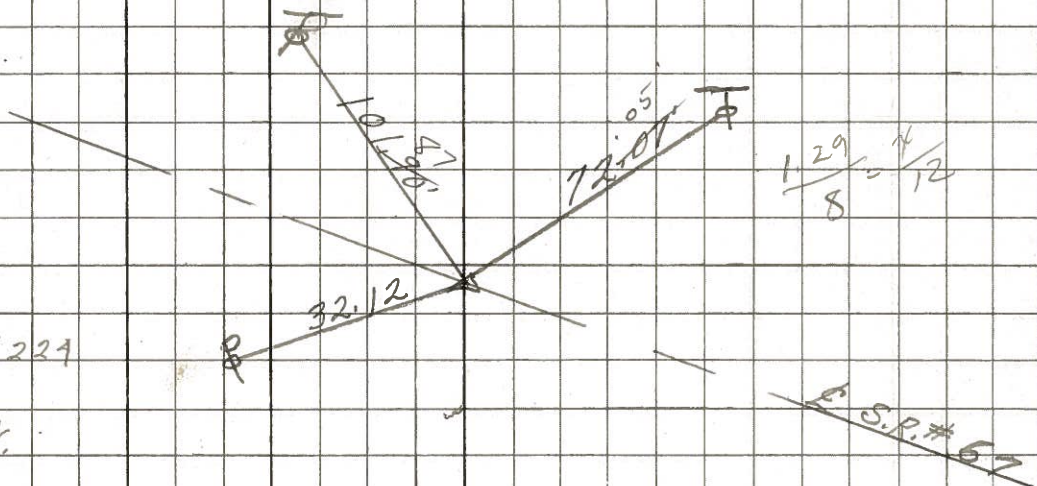
8609



(62)

P.T.
Iron Pin
Intersection U.S. # 224
S.R. # 67
Reset small spk.

8608

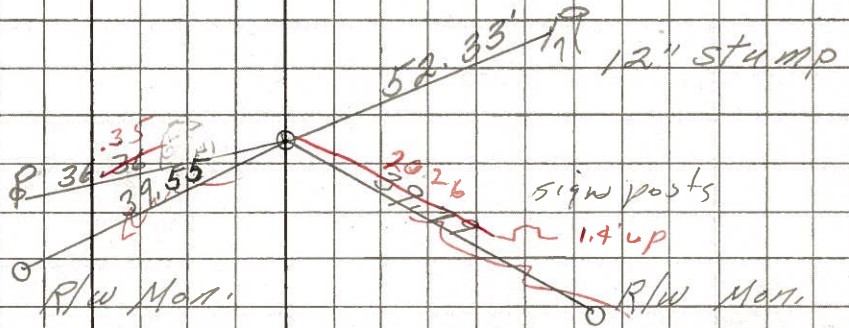


5/3/82 sunny 74°

(61)

P.O.T.
1089+01.55
Reset small spk.

8607



PERSONNEL TITLE PERSONNEL TITLE

KrabiLL
Kowalski
Brooks

COUNTY Seneca DATE

S. R. 224 WEATHER

SEC. TEMP.

DESCRIPTION LEFT CENTER LINE RIGHT JOB NO.

