

O.D.O.T. DISTRICT 2 SURVEY OFFICE (USE ONLY)

PERSONNEL

REFERENCE NO. 72 A

SHEET 16 OF 37

NOTES RHOADES

DATE 11/8/23

ROUTE US 224

H.C. AUBLE

WEATHER CLOUDY

COUNTY SENECA

R.C. ASTON

TEMP. 43°

TOWNSHIP SCIPIO

NIESE

SECTION 35

DWG BY RHOADES PID 101217

T 2 N R 16 E

TYPE MONUMENT MAG/WASHER

ON SURFACE - ~~BELOW~~ ON

OFFSET ☉ PAVEMENT ON LT : RT

10.8' TO RT EDGE PAVEMENT

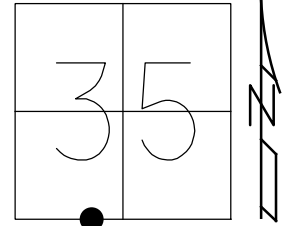
STATION: 1233+70

HORZ. DATUM: NAD83 2011

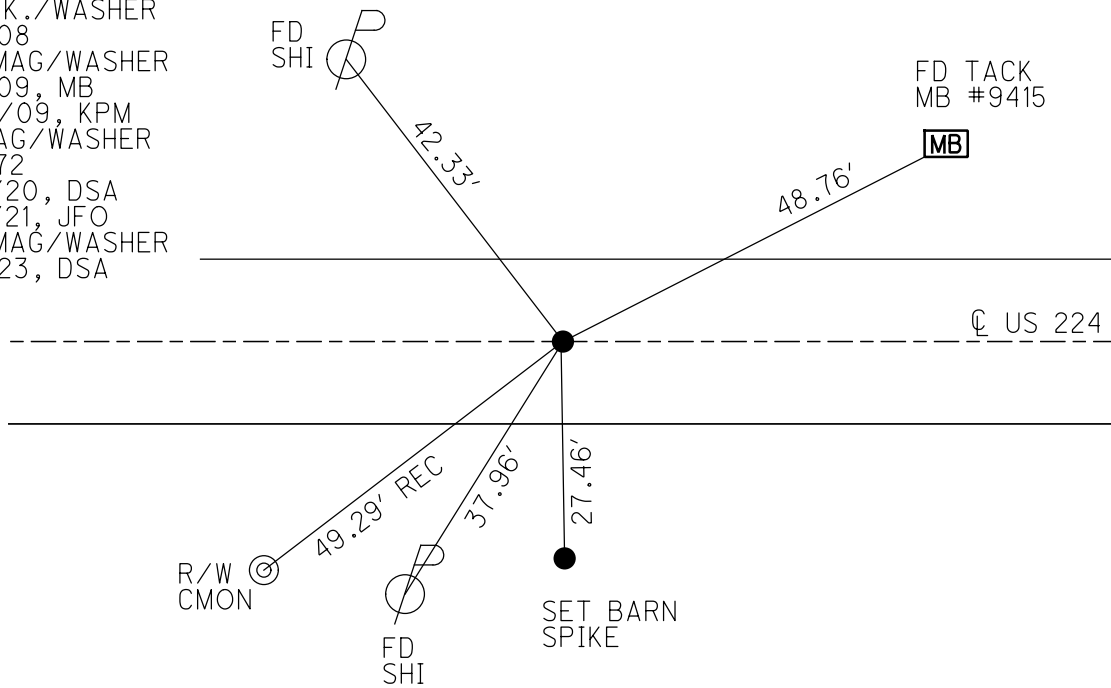
GEOID: NAVD88 2018

GRID: NORTHING: 515725.303

EASTING: 1833996.231



RECORD: P.O.T.
 FD P.K./WASHER
 ATOP R.R.SPIKE
 SET P.K./WASHER
 10/28/82
 FD P.K./WASHER
 6/30/92, JLR
 SET P.K./WASHER
 12/7/92, JLR
 FD P.K./WASHER
 5/6/08
 SET MAG/WASHER
 8/4/09, MB
 10/14/09, KPM
 FD MAG/WASHER
 REF A72
 9/14/20, DSA
 3/17/21, JFO
 SET MAG/WASHER
 11/8/23, DSA



O.D.O.T. DISTRICT 2 SURVEY OFFICE (USE ONLY)

PERSONNEL

REFERENCE NO. 72 A

SHEET 15 OF 33

NOTES RHOADES DATE 3/17/21

ROUTE US 224

H.C. O'DONNELL WEATHER FAIR

COUNTY SENECA

R.C. _____ TEMP. 45°

TOWNSHIP SCIPIO

SECTION 35

DWG BY NIESE PID PAVE TRAIN

T 2 N R 16 E

TYPE MONUMENT MAG/WASHER

ON SURFACE - ~~BELOW~~ ON

OFFSET Q PAVEMENT ON LT : RT

10.8' TO RT EDGE PAVEMENT

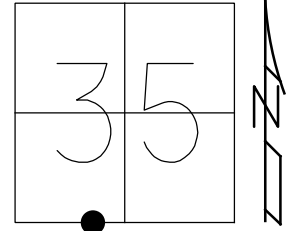
STATION: 1233+70

HORZ. DATUM: NAD83 2011

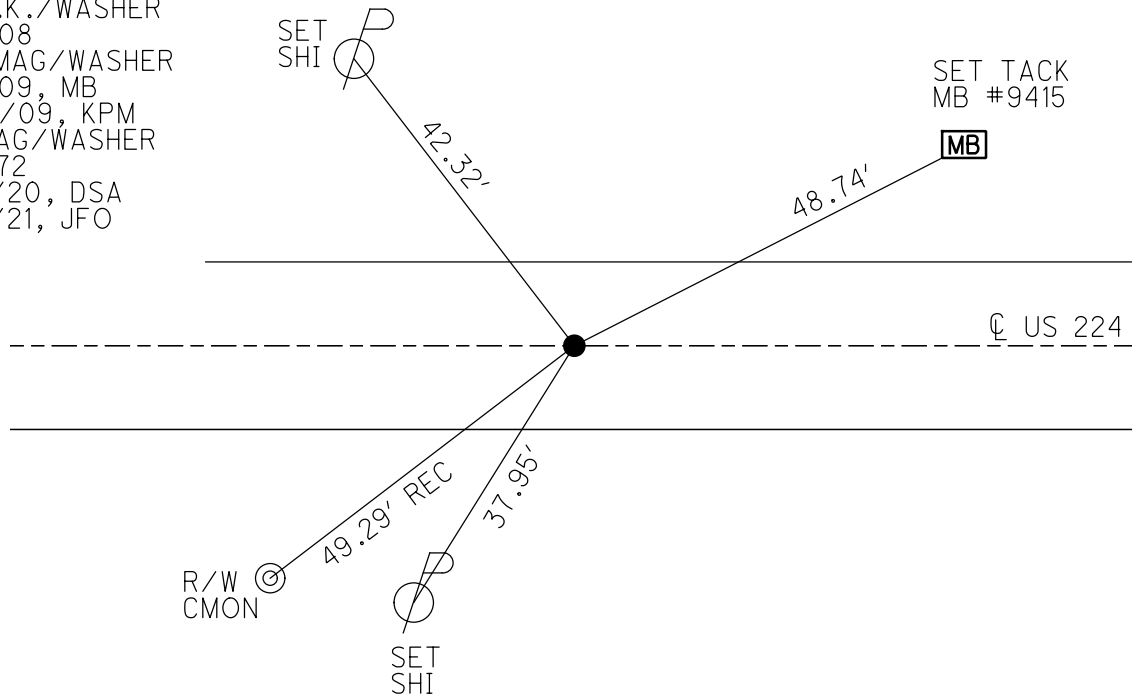
GEOID: NAVD88 2012A

GRID: NORTHING: _____

EASTING: _____



RECORD: P.O.T.
 FD P.K./WASHER
 ATOP R.R.SPIKE
 SET P.K./WASHER
 10/28/82
 FD P.K./WASHER
 6/30/92, JLR
 SET P.K./WASHER
 12/7/92, JLR
 FD P.K./WASHER
 5/6/08
 SET MAG/WASHER
 8/4/09, MB
 10/14/09, KPM
 FD MAG/WASHER
 REFA72
 9/14/20, DSA
 3/17/21, JFO



O.D.O.T. DISTRICT 2 SURVEY OFFICE

PERSONNEL

REFERENCE NO. 72 A

SHEET 14 OF 35

NOTES Moser

DATE 8-4-09

ROUTE U.S. 224

H.C. Moser

WEATHER Fair

COUNTY SENECA

R.C. Pietkowski

TEMP. +40°

TOWNSHIP SCIPIO

Goldberg

SECTION 35

T. 2 N R. 16 E

TYPE MONUMENT P.K./WASHER

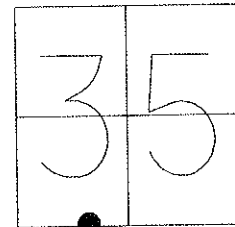
ON SURFACE - ~~BELOW~~ ON

LEFT - Q PAV'T - RIGHT ON

10.8' TO RT. EDGE PAVEMENT

S.L.M. 1243 + 82.49

Grid: Northing: 515733.852 Easting: 1831758.714



RECORD: 10-28-82
P.O.T. STA. 1284 + ?
SET PK & WASHER ATOP
PK & WASHER ATOP R.R. SPK.

FD P.K./WASHER
6/30/92 JLR

SET P.K./WASHER
12/7/92 JLR

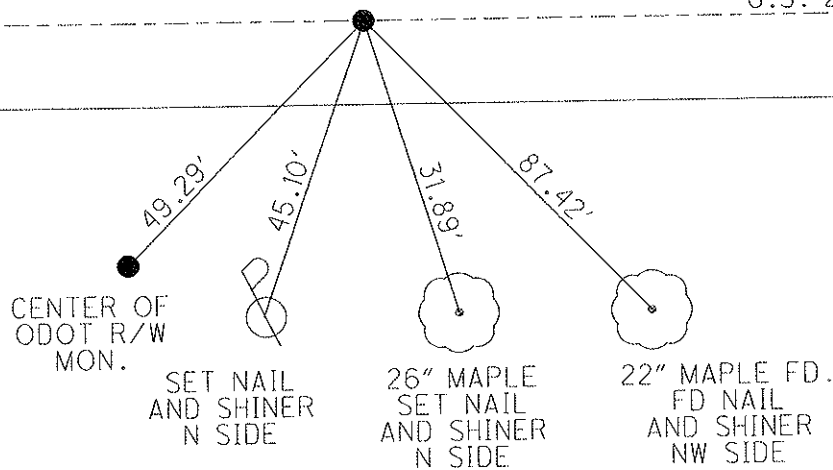
FD P.K./WASHER
5/6/08

SET MAG/WASHER
8/4/09 MB

RESET MAG/WASHER
10/14/09 KPM

Q PAV'T

U.S. 224



O.D.O.T. DISTRICT 2 SURVEY OFFICE

PERSONNEL

REFERENCE NO. 72-A

SHEET 12 OF 32

NOTES Cheney

H.C. RIPPLE

R.C. BARBOUR

Geyman

DATE 16-30-92

WEATHER Cloudy

TEMP. 55°

ROUTE U.S. 224

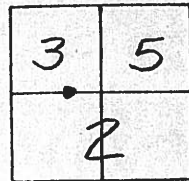
COUNTY Seneca

TOWNSHIP Scipio & Bloom

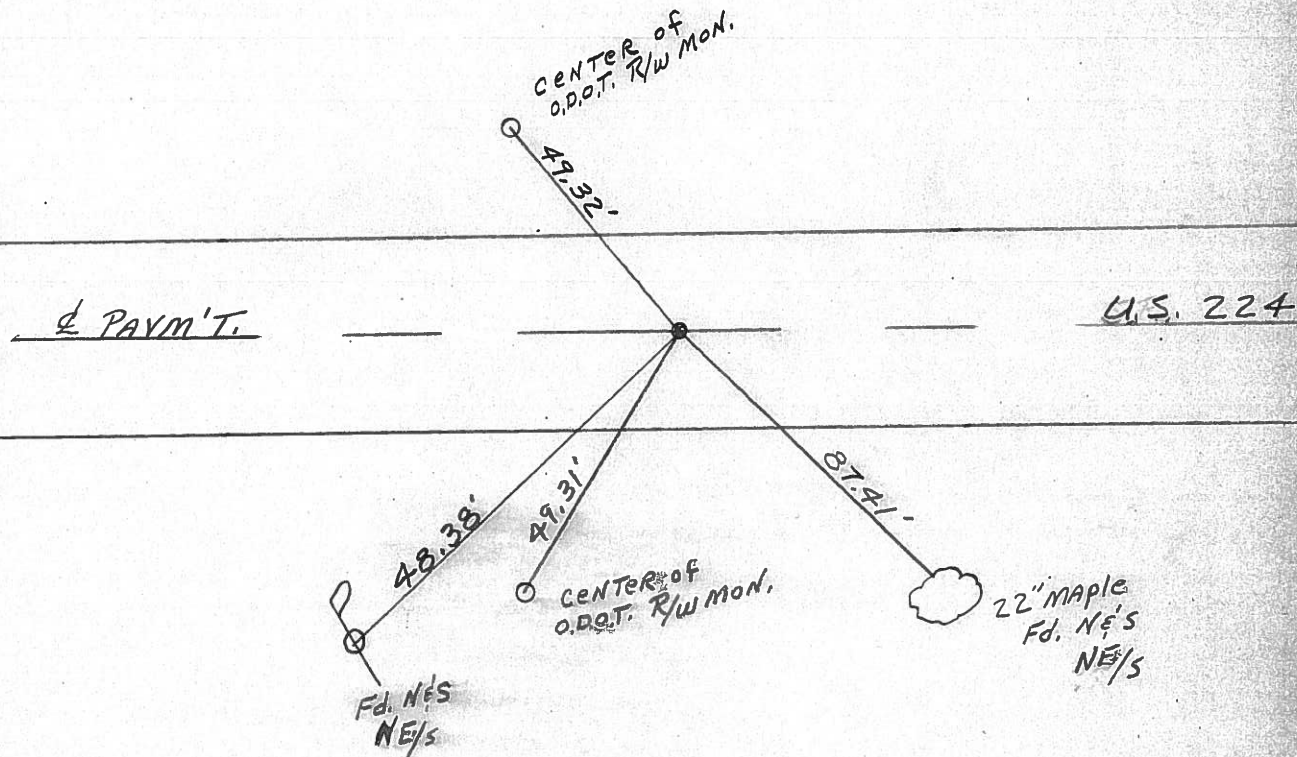
SECTION 35 E 2

T 2 N R 16 E

TYPE MONUMENT 6-30-92 Fd. P.K. & Washer - set P.K. & Washer
 ON SURFACE - BELOW yes 12-07-92
J.L.R.
~~LEFT - C. PAV'T. - RIGHT~~ yes
10' TO RT. EDGE PAVEMENT
 S.L.M. 1233+40



Record: 10-28-82
 P.O.T. STA. 1284+?
 SET P.K. & WASHER ATOP
 P.K. & WASHER ATOP R.R. SPIKE



County Seneca S.R. 224

Date 10/28/82 Drawn 11/02/02

Township Scipio & Bloom

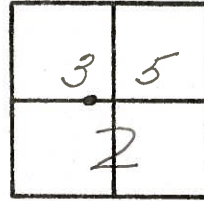
Weather sunny

Section 35 & 2

Temp. 68°

T²₁₆N, R¹⁶E

Personnel Cronin

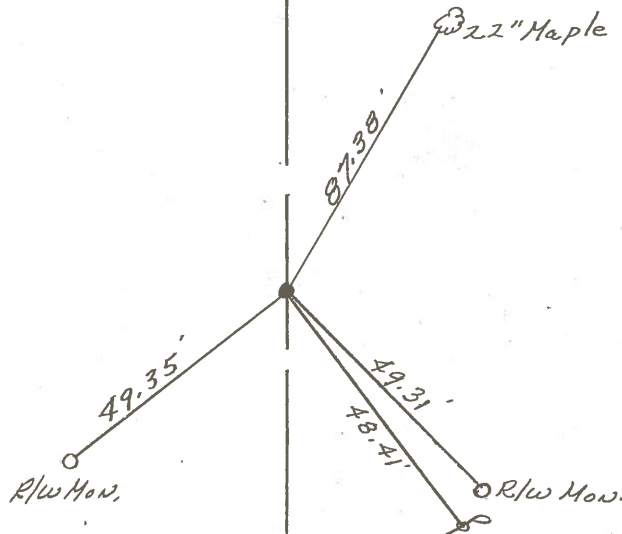


72-A

Ripple
Geyman
Mosser
Barbour



P.O.T.
1284+
set P.K. & washer at top
P.K. & washer at top R.P. spike



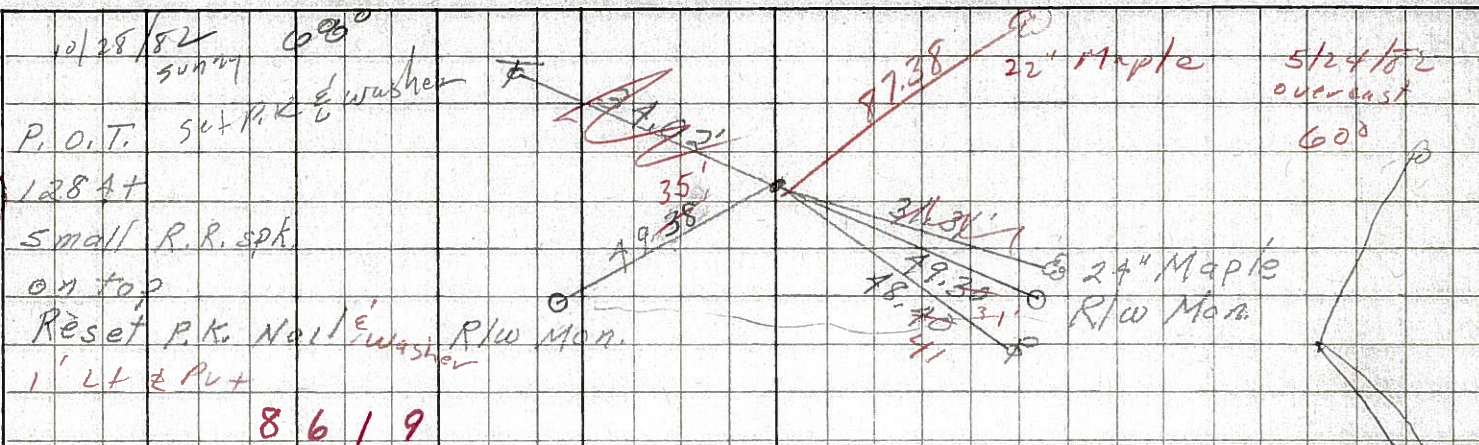
R/R/w U.S. 2247

PERSONNEL TITLE PERSONNEL TITLE
 Schneider _____ Potts _____
 Mosser _____
 Barbour _____
 Redding _____

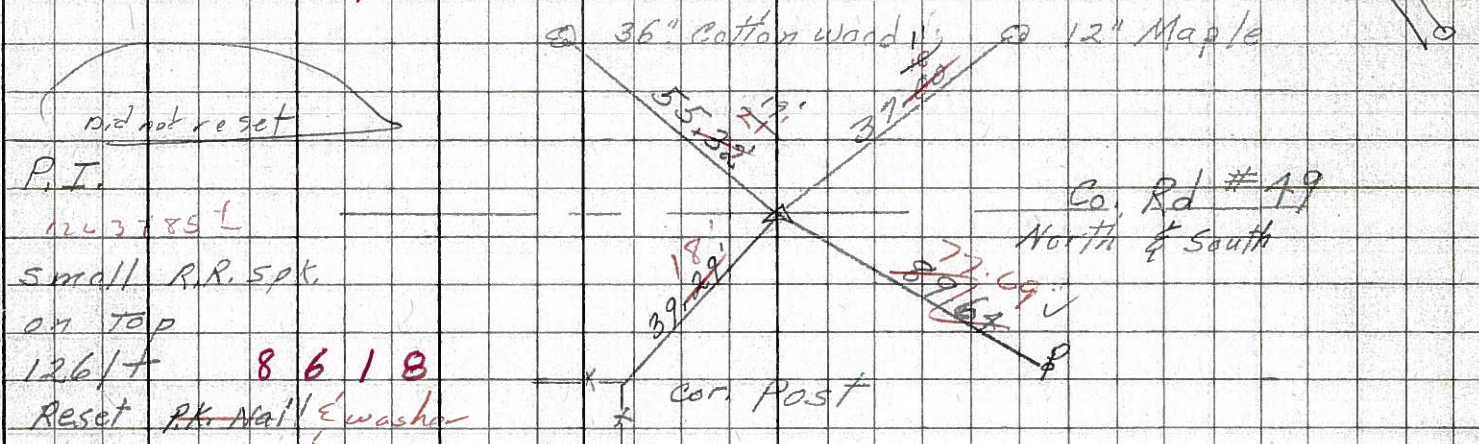
COUNTY Seneca DATE 3-29-68
 S. R. U. S. # 22A WEATHER Fair
 SEC. S. R. #100 to Attica TEMP. 60°

DESCRIPTION Ties for Control Points JOB NO. _____

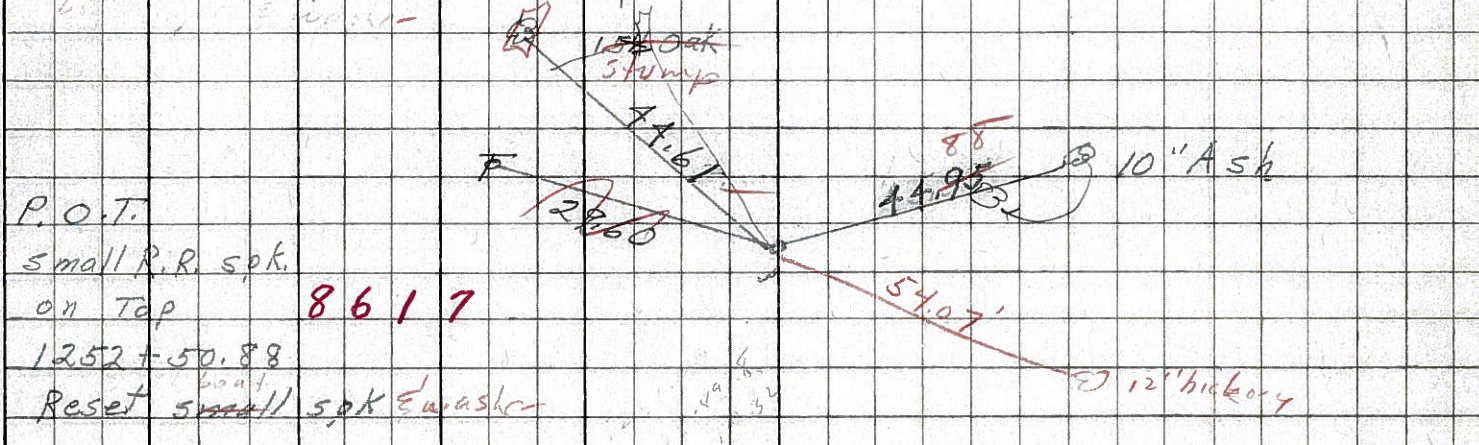
72A



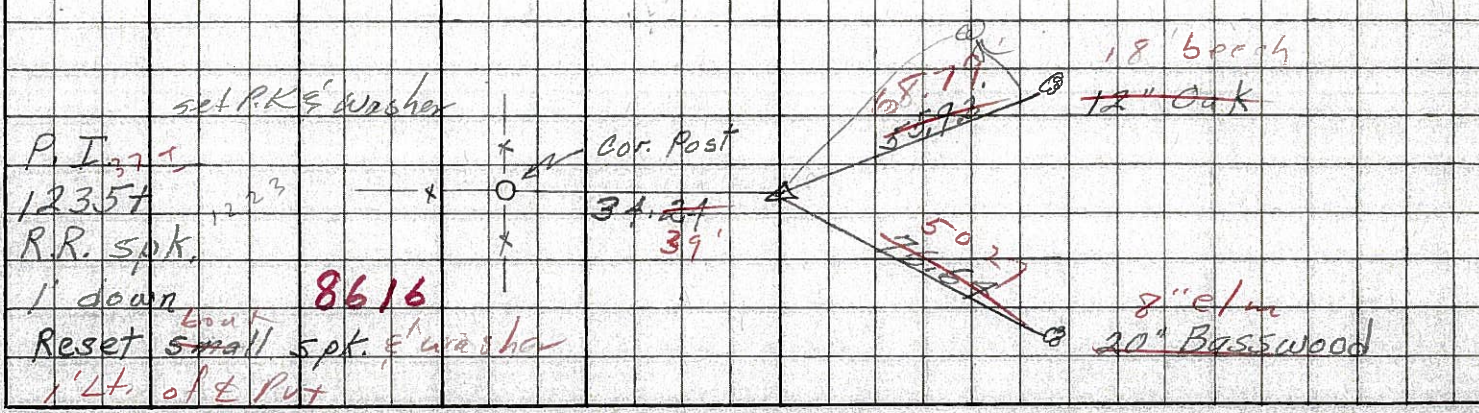
72



71



70



10/28/82 080°
 sunny
 P.O.T. set P.K. & washer
 1284+
 small R.R. spk.
 on top
 Reset P.K. Nail & washer
 1' Lt & Put
 8619
 did not reset
 P.T.
 123785+
 small R.R. spk.
 on top
 1261+
 Reset P.K. Nail & washer
 Cor. Post
 15\"/>