

O.D.O.T. DISTRICT 2 SURVEY OFFICE (USE ONLY)

PERSONNEL

REFERENCE NO. 76

SHEET 22 OF 37

NOTES RHOADES

DATE 11/8/23

ROUTE US 224

H.C. AUBLE

WEATHER CLOUDY

COUNTY SENECA

R.C. ASTON  
NIESE

TEMP. 43°

TOWNSHIP SCIPIO

SECTION 36

DWG BY RHOADES PID 101217

T 2 N R 16 E

TYPE MONUMENT MAG/WASHER

ON SURFACE - ~~BELOW~~ ON

OFFSET 0.5' LT : ~~RT~~

9.5' TO LT EDGE PAVEMENT

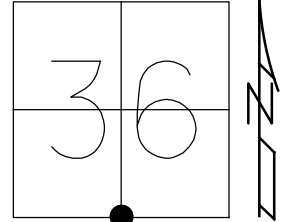
STATION: 1296+39.82

HORIZ.DATUM: NAD83 2011

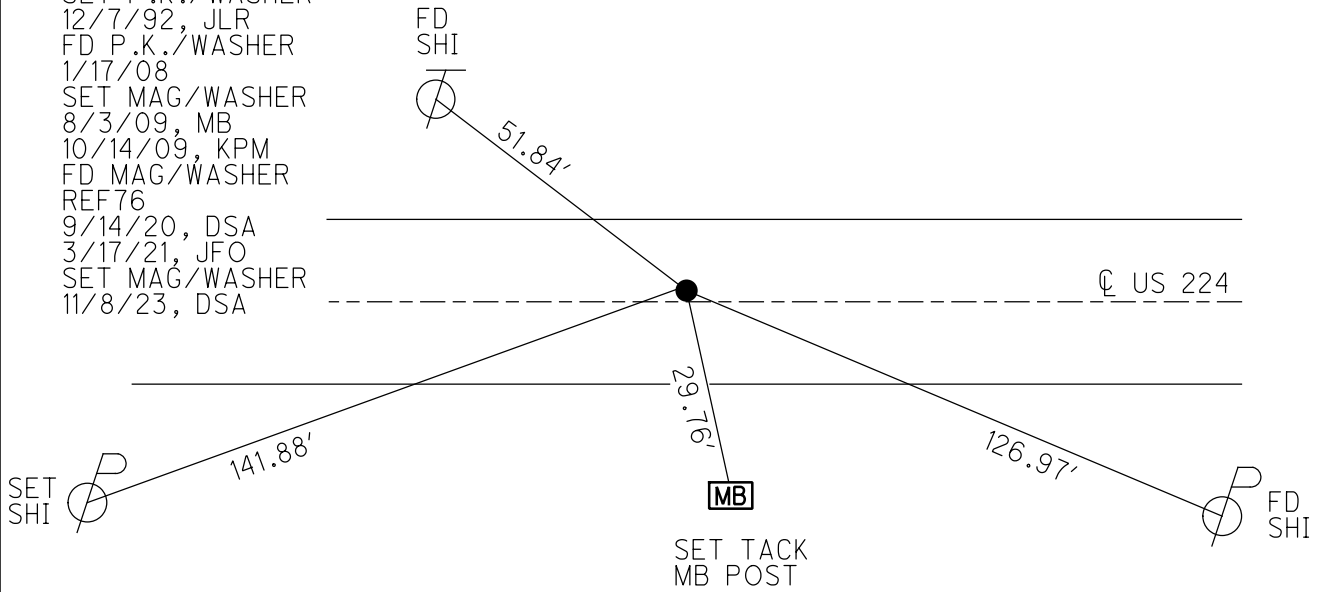
GEOID: NAVD88 2018

GRID: NORTHING: 515644.028

EASTING: 1840253.112



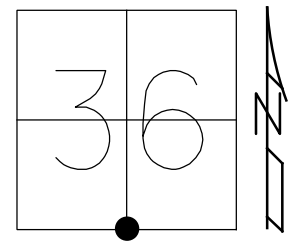
RECORD: P.I.  
STA. 1346+88  
FD BOAT SPIKE/WASHER  
1.5" DOWN  
ATOP R.R.SPIKE  
ATOP IPIN  
SET P.K./WASHER  
10/28/82  
FD P.K./WASHER  
6/30/92, JLR  
SET P.K./WASHER  
12/7/92, JLR  
FD P.K./WASHER  
1/17/08  
SET MAG/WASHER  
8/3/09, MB  
10/14/09, KPM  
FD MAG/WASHER  
REF76  
9/14/20, DSA  
3/17/21, JFO  
SET MAG/WASHER  
11/8/23, DSA



O.D.O.T. DISTRICT 2 SURVEY OFFICE (USE ONLY)

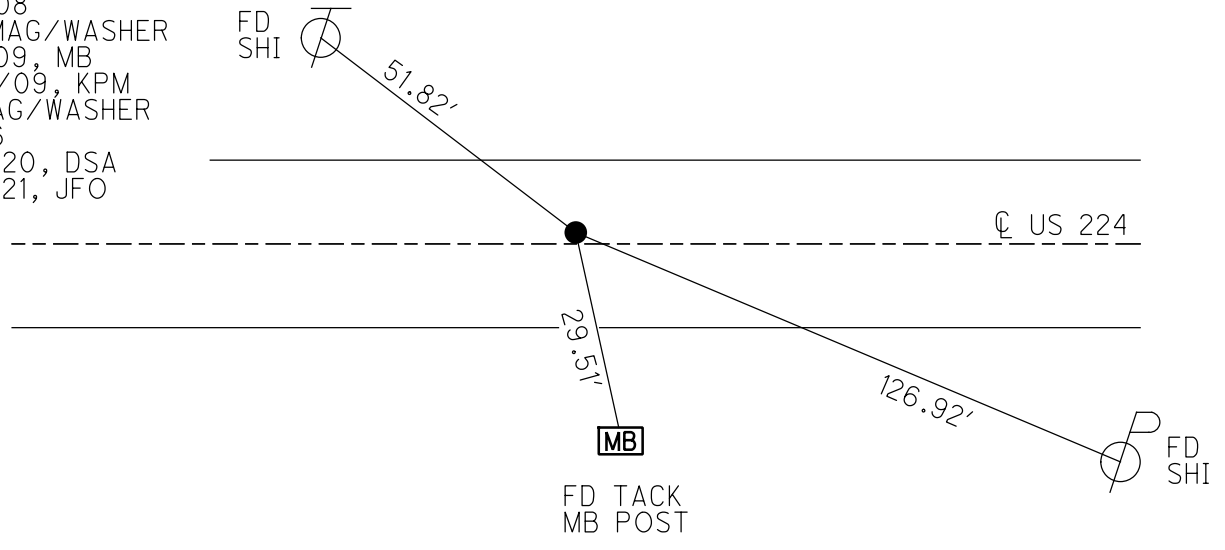
PERSONNEL \_\_\_\_\_ REFERENCE NO. 76 SHEET 20 OF 33  
 NOTES RHOADES DATE 3/17/21 ROUTE US 224  
 H.C. O'DONNELL WEATHER FAIR COUNTY SENECA  
 R.C. \_\_\_\_\_ TEMP. 50° TOWNSHIP SCIPIO  
 \_\_\_\_\_ SECTION 36  
 DWG BY NIESE PID PAVE TRAIN T 2 N R 16 E

TYPE MONUMENT MAG/WASHER  
 ON SURFACE - ~~BELOW~~ ON  
 OFFSET 0.5' LT : ~~RT~~  
9.5' TO LT EDGE PAVEMENT  
 STATION: 1296+39.82



HORZ.DATUM: NAD83 2011 GEOID: NAVD88 2012A  
 GRID: NORTHING: 515644.070 EASTING: 1840253.050

RECORD: P.I.  
 STA. 1346+88  
 FD BOAT SPIKE/WASHER  
 1.5" DOWN  
 ATOP R.R.SPIKE  
 ATOP IPIN  
 SET P.K./WASHER  
 10/28/82  
 FD P.K./WASHER  
 6/30/92, JLR  
 SET P.K./WASHER  
 12/7/92, JLR  
 FD P.K./WASHER  
 1/17/08  
 SET MAG/WASHER  
 8/3/09, MB  
 10/14/09, KPM  
 FD MAG/WASHER  
 REF76  
 9/14/20, DSA  
 3/17/21, JFO



O.D.O.T. DISTRICT 2 SURVEY OFFICE

PERSONNEL

REFERENCE NO. 76

SHEET 19 OF 35

NOTES Moser

DATE 8-4-09

ROUTE U.S. 224

H.C. Moser

WEATHER Fair

COUNTY SENECA

R.C. Pietkowski

TEMP. +40°

TOWNSHIP SCIPPIO

Goldberg

SECTION 36

T 2 N R 16 E

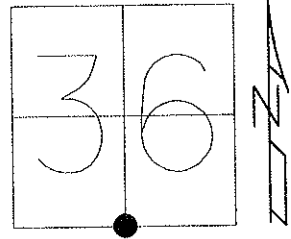
TYPE MONUMENT P.K./WASHER

ON SURFACE - ~~BELOW~~ ON

LEFT - Q PAV'T = ~~RIGHT~~ 0.5'  
9.5' TO LT EDGE PAVEMENT

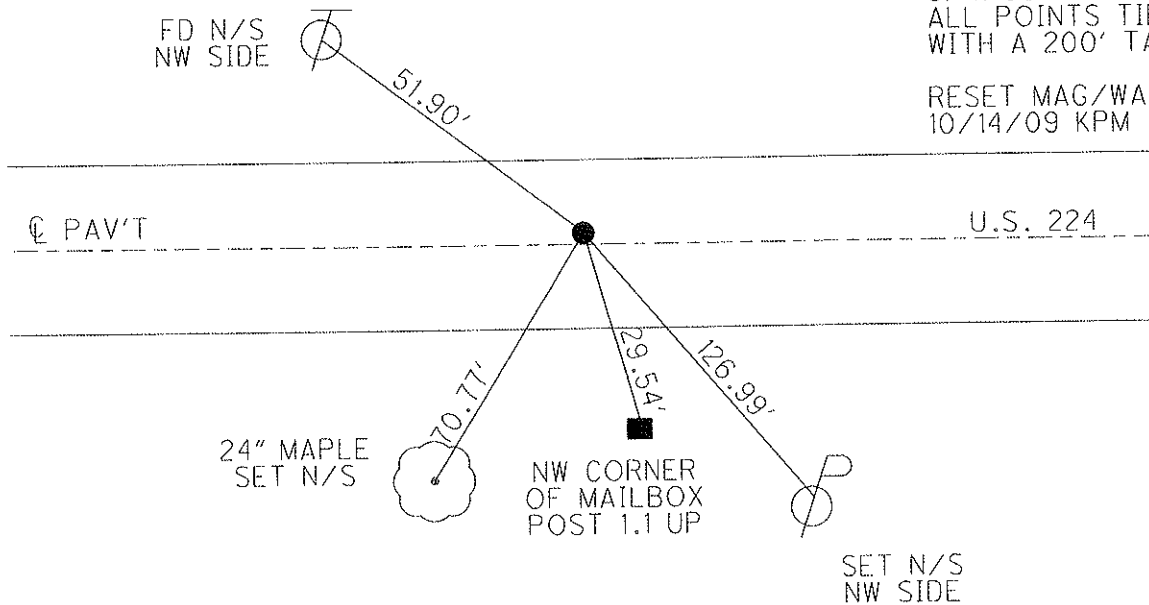
S.L.M. 1296 + 39.82

Grid: Northing: 515644.070 Easting: 1840253.050



RECORD: 10-28-82  
 PI STA 1346+88  
 BOAT SPK 1.5" BELOW SURFACE  
 ATOP RR SPK - I PIN FIELD  
 BOOK #57 (FROM LOFT).

FD P.K./WASHER  
 6/30/92 JLR  
 RESET P.K./WASHER  
 12/7/92 JLR  
 FD P.K./WASHER  
 1/17/08  
 SET MAG/WASHER  
 8/4/09 MB  
 ALL POINTS TIED  
 WITH A 200' TAPE.  
 RESET MAG/WASHER  
 10/14/09 KPM



# O.D.O.T. DISTRICT 2 SURVEY OFFICE

PERSONNEL

REFERENCE NO. 76-A

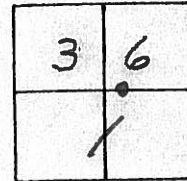
SHEET 16 OF 32

NOTES Cheney  
 H.C. RIPPLE  
 R.C. BARBOUR  
Geyman

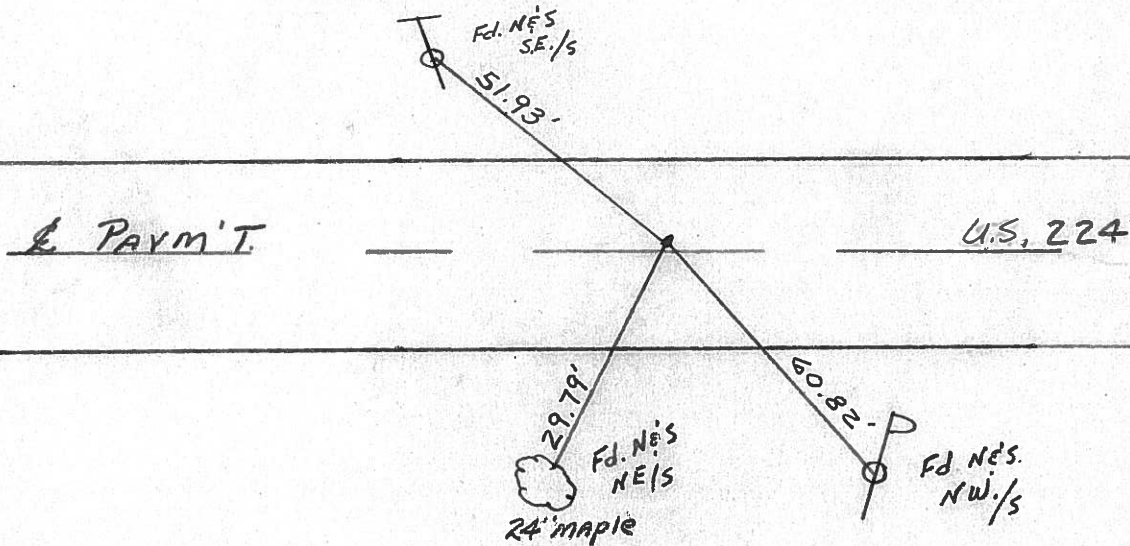
DATE 10-30-92  
 WEATHER Cloudy  
 TEMP. 55°

ROUTE U.S. 224  
 COUNTY Seneca  
 TOWNSHIP Scipio & Bloom  
 SECTION 36 & 1  
T<sup>2</sup> N R<sup>16</sup> E

TYPE MONUMENT Fd. P.K. & Washer - Reset <sup>6-30-92</sup> P.K. & Washer <sup>12-07-92</sup>  
 ON SURFACE - BELOW yes J.L.R.  
 LEFT-C PAVM'T. - RIGHT 0.5'  
9.5' TO LT. EDGE PAVEMENT  
 S.L.M. 1296+00



Record: 10-28-82  
 P.O.T. STA. 1346+88  
 Boat Spk. 1 1/2" below surface  
 ATop RR. Spk. - I. Pin Field  
 Book #57 (FROM LOFT)



County Seneca S.R. 224

Date 10/28/82 Drawn 11/03/82

Township Scipio & Bloom

Weather sunny

Section 36 & 1

Temp. 70°

T<sup>2</sup>N, R<sup>16</sup>E

Personnel Cronin

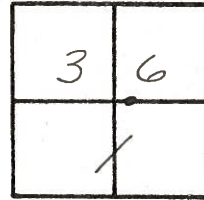
Ripple

Geyman

Mosser

Barbour

~~76~~



76



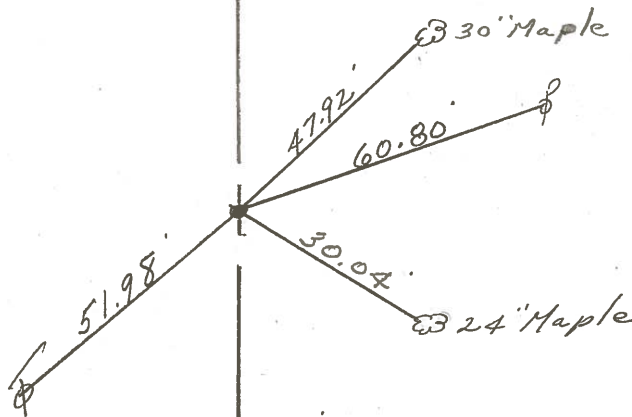
P.O.T.

1346 + 88

Boat spike 1 1/2" below surface

at top R.R spike - I. Pin

Field Book # 57 (from left)



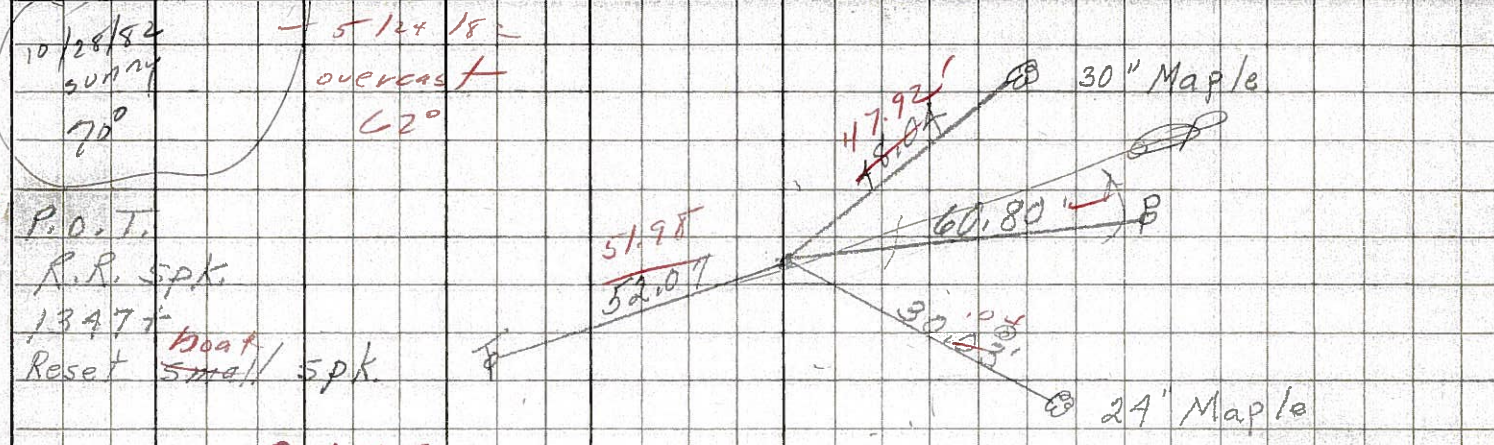
R.R/w U.S. #2247



PERSONNEL TITLE PERSONNEL TITLE COUNTY DATE  
 Schneider Potts Seneca Windy  
 Mosser \_\_\_\_\_ \_\_\_\_\_  
 Barbour \_\_\_\_\_ \_\_\_\_\_  
 Redding \_\_\_\_\_ \_\_\_\_\_  
 S. R. U.S. #224 WEATHER 60°  
 SEC. S.R. #100 to Attica TEMP. 3-29-68

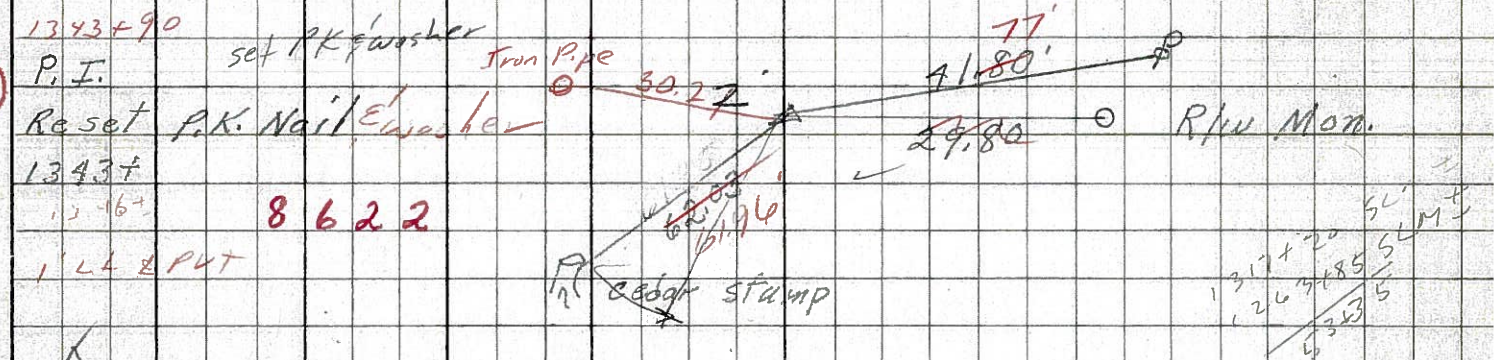
DESCRIPTION Ties for Control Points LEFT CENTER LINE RIGHT JOB NO.

76



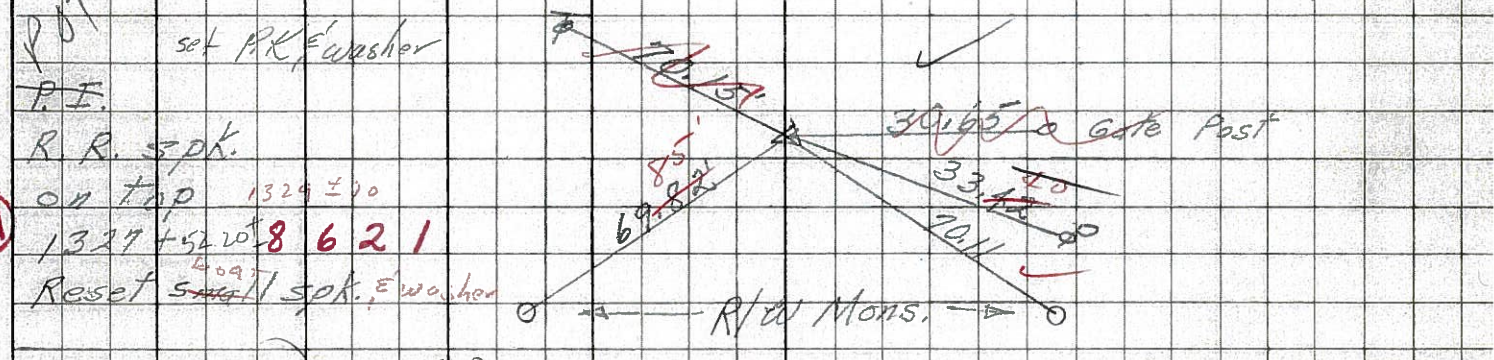
8623

75



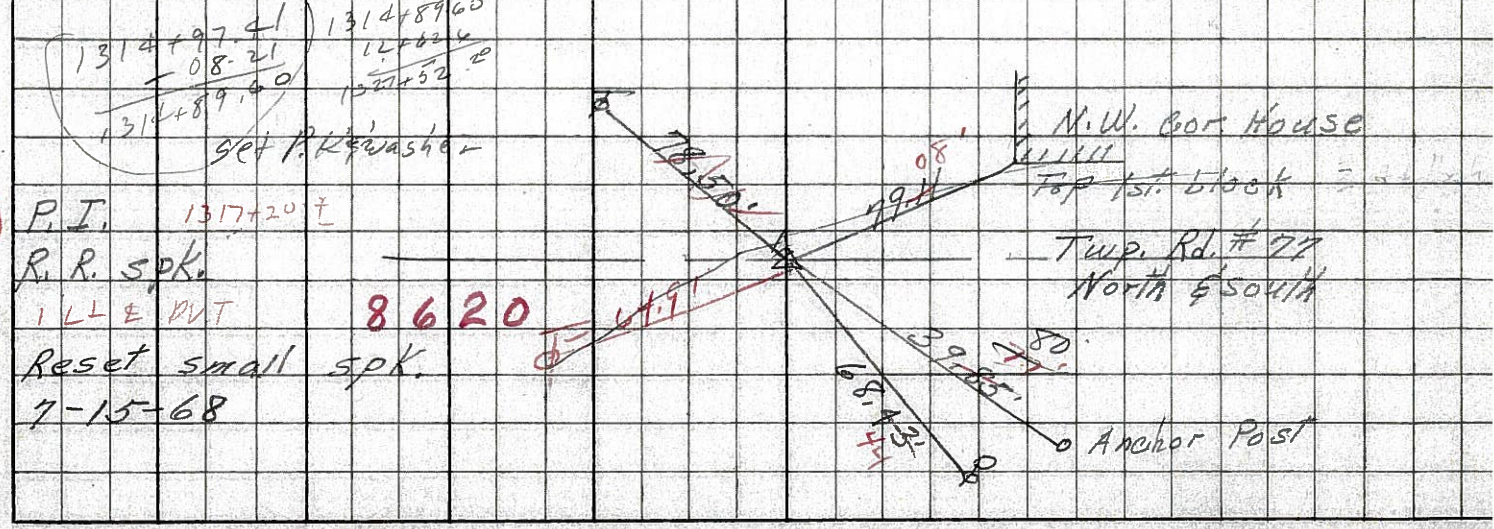
8622

74-A



8621

73



8620



PERSONNEL TITLE PERSONNEL TITLE

COUNTY Seneca DATE 1-12-66

S. R. U.S. #224 WEATHER

SEC. TEMP.

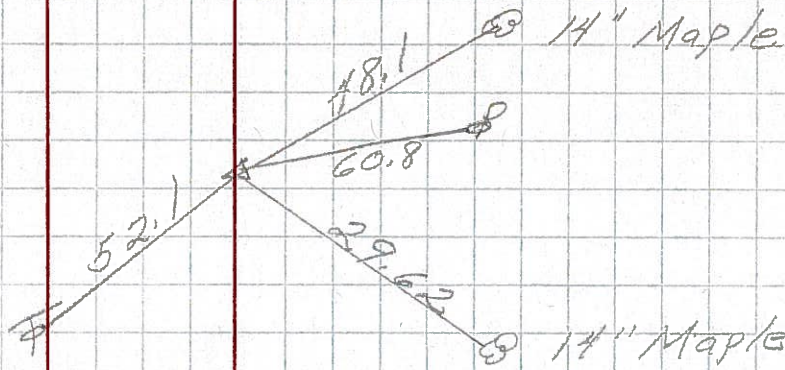
DESCRIPTION S.R. #19 - Africa JOB NO.

LEFT CENTER LINE RIGHT

76

31+98.4  
Δ = 0°0'  
R.R. spt. on E R/W

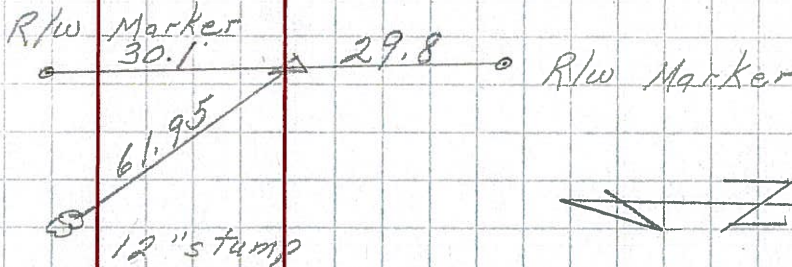
191



75

P.I. 26+73.9  
Δ = 0°03' Rt.  
R.R. spt. on E R/W

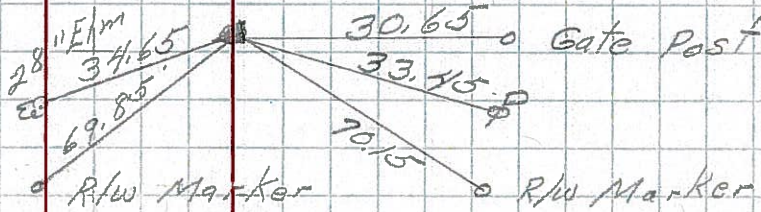
190



74-A

P.O.T.  
12+62.6  
Δ = 0°0'  
R.R. spt. on E R/W

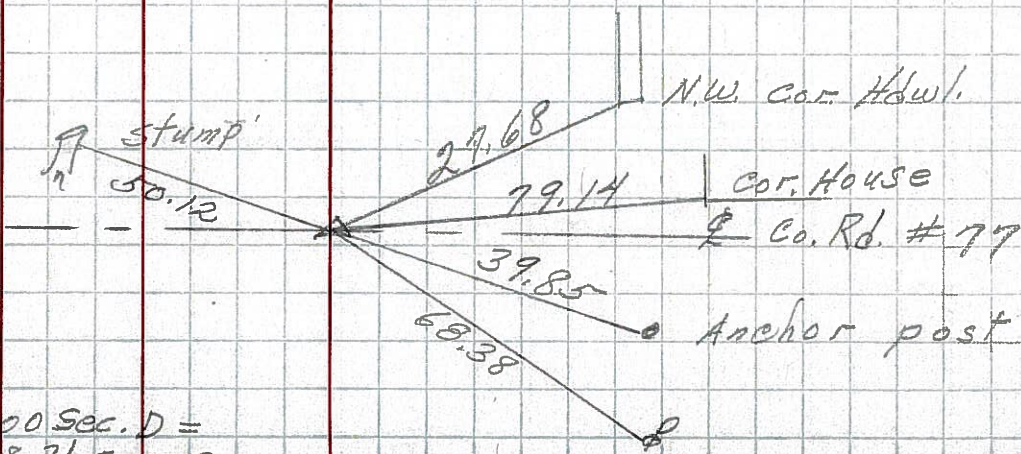
189



73

P.I. 106+08.21  
R.R. spt. on E R/W

188



End Sec. G 0+00 Sec. D =  
106+08.21 Sec. G



PERSONNEL TITLE PERSONNEL TITLE

KrABILL  
Kavalaski  
Brooks

COUNTY Seneca DATE \_\_\_\_\_

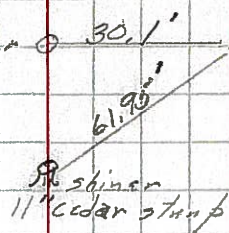
S. R. 224 WEATHER \_\_\_\_\_

SEC. \_\_\_\_\_ TEMP. \_\_\_\_\_

DESCRIPTION LEFT CENTER LINE RIGHT JOB NO.

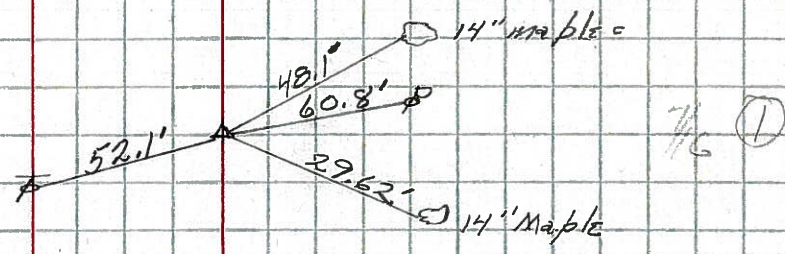
old sta. 26+23.9 **(75)** #190  
 $A=0^{\circ}03'RT.$   
 R.R. spike  
 R/w marker  $\odot$  30.1'  $\Delta$  29.8'  $\odot$  R/w marker 1/2 sec. (11)

1-7-64



old sta 31+98.4 **(76)** #191  
 $A=0^{\circ}0'$   
 R.R. spike

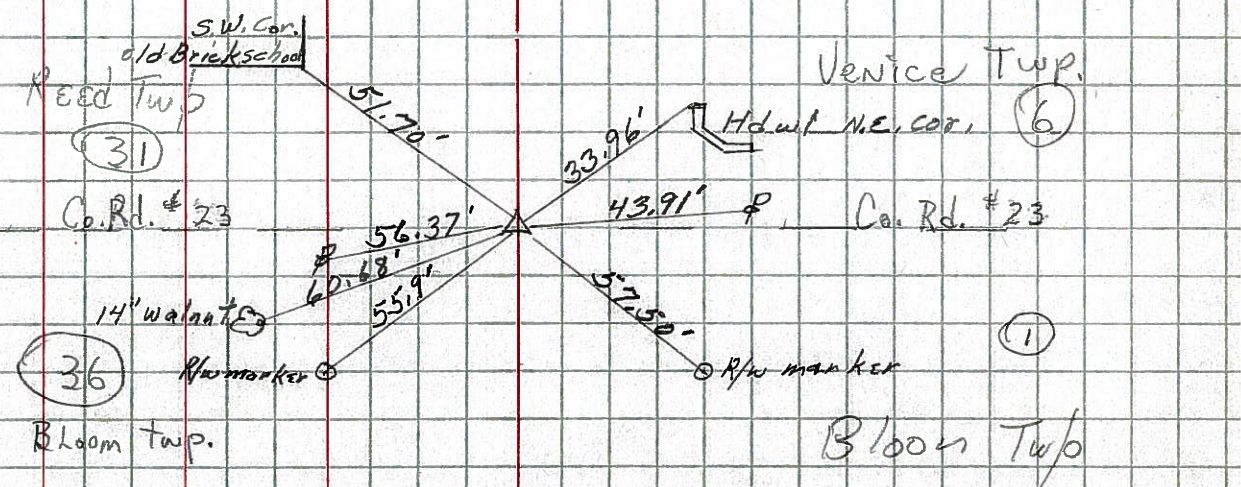
1-7-64



see sheet 10 for POT No 191A

old sta 53+47.9 **(77)** #192  
 $A=0^{\circ}03'LT$   
 R.R. spike

1-7-64



Bloom twp.

Bloom Twp



PERSONNEL TITLE PERSONNEL TITLE

COUNTY Seneca

DATE checked 10-11-9

S. R. #224

WEATHER

SEC. G-D-F-E

TEMP.

DESCRIPTION SH. 272

LEFT

CENTER LINE

RIGHT

JOB NO.

74A

Sta. 12+62.6

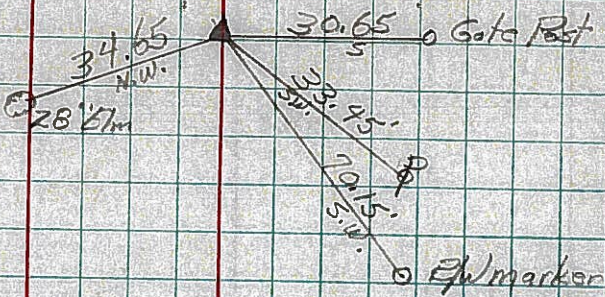
$\Delta = 0^{\circ} - 0'$

R.R. Spike on  $\phi$  R/W

6-25-59

8-17-59 #189

Reset



106 + 08.2  
 412 62.6  
 148 + 0.81



75

Sta. 26+73.9

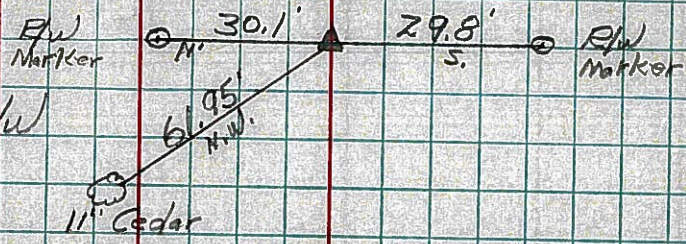
$\Delta = 0^{\circ} - 03' \text{ Rt.}$

R.R. Spike on  $\phi$  R/W

6-25-59

8-17-59 #190

Reset



76

Sta. 31+98.4

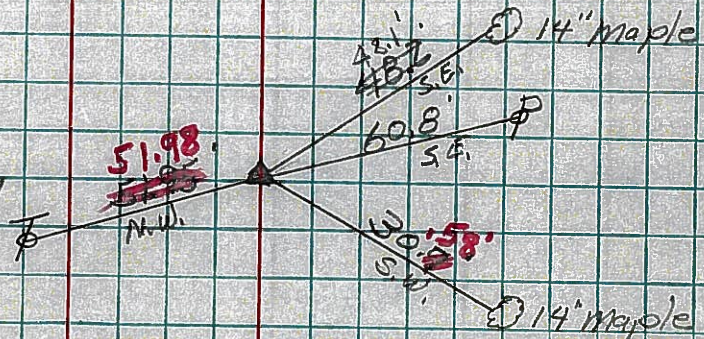
$\Delta = 0^{\circ} - 0'$

R.R. Spike on  $\phi$  R/W

6-26-59

8-17-59 #191

Reset



78

Sta. 53+47.9

$\Delta = 0^{\circ} - 03' \text{ Lt.}$

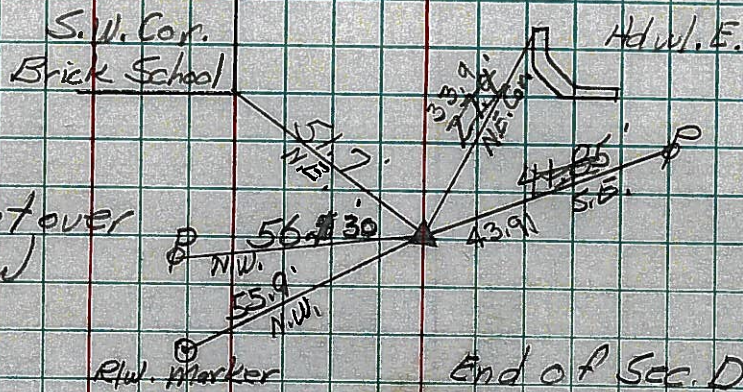
R.R. Spike Set over

Cor. Stone  $\phi$  R/W

6-26-59

8-10-59 #192

Reset



End of Sec. D. Start Sec. F  
 Sta. 53+47.9 Sec. D = Sta. 54+00  
 Sec. F