

O.D.O.T. DISTRICT 2 SURVEY OFFICE (USE ONLY)

PERSONNEL

REFERENCE NO. 80

SHEET 24 OF 37

NOTES RHOADES

DATE 11/8/23

ROUTE US 224

H.C. AUBLE

WEATHER CLOUDY

COUNTY SENECA

R.C. ASTON

TEMP. 51°

TOWNSHIP REED

NIESE

SECTION 31

DWG BY RHOADES

PID 101217

T 2 N R 17 E

TYPE MONUMENT MAG/WASHER

ON SURFACE - ~~BELOW~~ ON

OFFSET CL PAVEMENT 1' LT : ~~RT~~

9.2' TO LT EDGE PAVEMENT

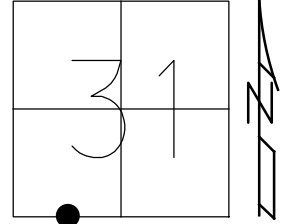
STATION: 1333+09

HORZ.DATUM: NAD83 2011

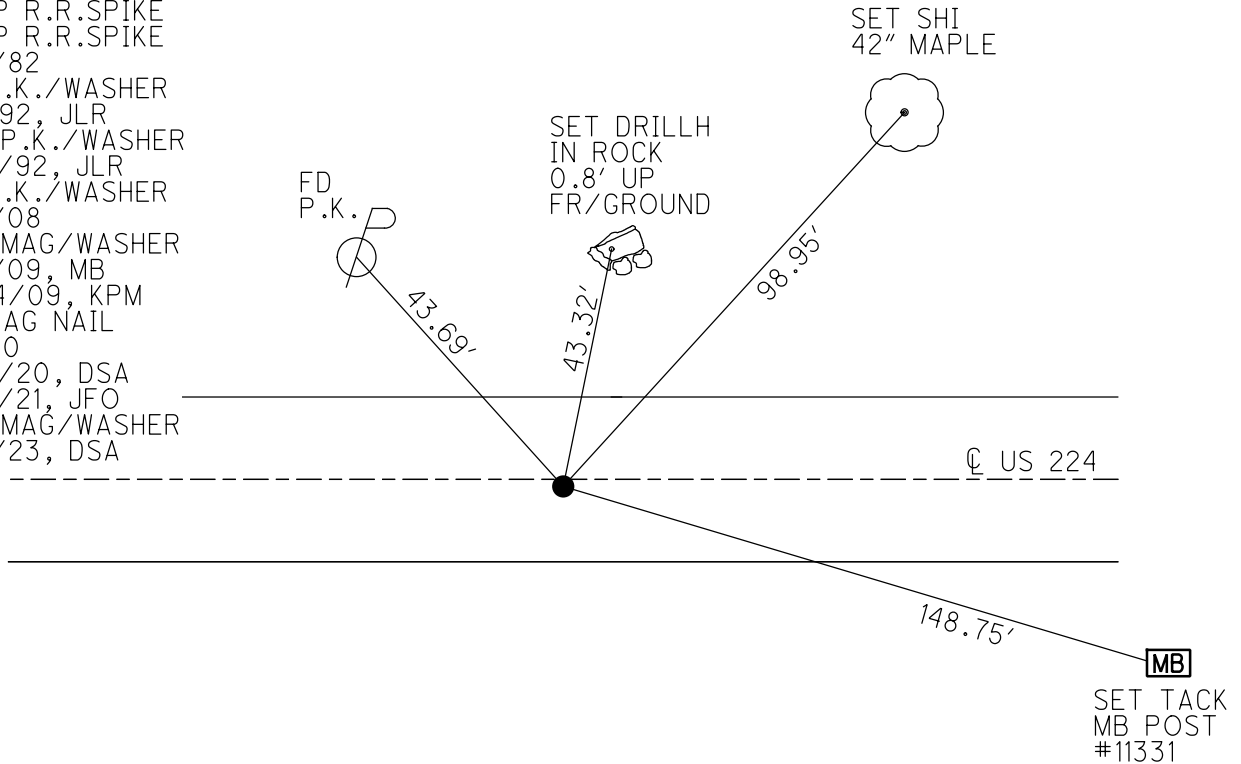
GEOID: NAVD88 2018

GRID: NORTHING: 515607.818

EASTING: 1843995.273



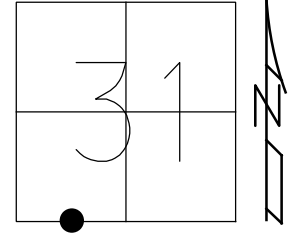
RECORD: P.O.T,
 STA. 1386+13.1
 SET P.K./WASHER
 1 1/2" DOWN
 ATOP R.R.SPIKE
 ATOP R.R.SPIKE
 11/2/82
 FD P.K./WASHER
 7/1/92, JLR
 SET P.K./WASHER
 12/7/92, JLR
 FD P.K./WASHER
 5/6/08
 SET MAG/WASHER
 8/3/09, MB
 10/14/09, KPM
 FD MAG NAIL
 REF80
 9/14/20, DSA
 3/17/21, JFO
 SET MAG/WASHER
 11/8/23, DSA



O.D.O.T. DISTRICT 2 SURVEY OFFICE (USE ONLY)

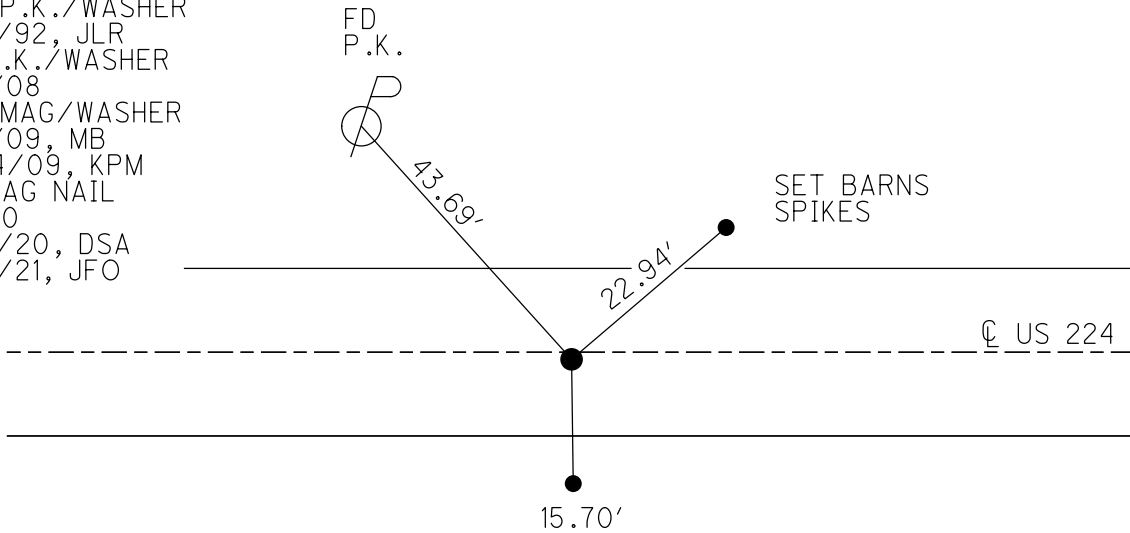
PERSONNEL _____ REFERENCE NO. 80 SHEET 22 OF 33
 NOTES RHOADES DATE 3/17/21 ROUTE US 224
 H.C. O'DONNELL WEATHER FAIR COUNTY SENECA
 R.C. _____ TEMP. 50° TOWNSHIP REED
 DWG BY NIESE PID PAVE TRAIN SECTION 31
 T 2 N R 17 E

TYPE MONUMENT MAG NAIL
 ON SURFACE - ~~BELOW~~ ON
 OFFSET ☉ PAVEMENT 1' LT : ~~RT~~
9.2' TO LT EDGE PAVEMENT
 STATION: 1333+09



HORZ.DATUM: NAD83 2011 GEOID: NAVD88 2012A
 GRID: NORTHING: 515607.855 EASTING: 1843995.217

RECORD: P.O,T,
 STA. 1386+13.1
 SET P.K./WASHER
 1 1/2" DOWN
 ATOP R.R.SPIKE
 ATOP R.R.SPIKE
 11/2/82
 FD P.K./WASHER
 7/1/92, JLR
 SET P.K./WASHER
 12/7/92, JLR
 FD P.K./WASHER
 5/6/08
 SET MAG/WASHER
 8/3/09, MB
 10/14/09, KPM
 FD MAG NAIL
 REF80
 9/14/20, DSA
 3/17/21, JFO



O.D.O.T. DISTRICT 2 SURVEY OFFICE

PERSONNEL

REFERENCE NO. 80

SHEET 21 OF 35

NOTES Moser

DATE 8-3-09

ROUTE U.S. 224

H.C. Moser

WEATHER Fair

COUNTY SENECA

R.C. Pietkowski

TEMP. +40°

TOWNSHIP REED

Goldberg

SECTION 31

T 2 N R 17 E

TYPE MONUMENT P.K./WASHER

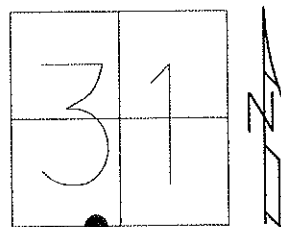
ON SURFACE - ~~BELOW~~ ON

LEFT - Q PAV'T - ~~RIGHT~~ 1'

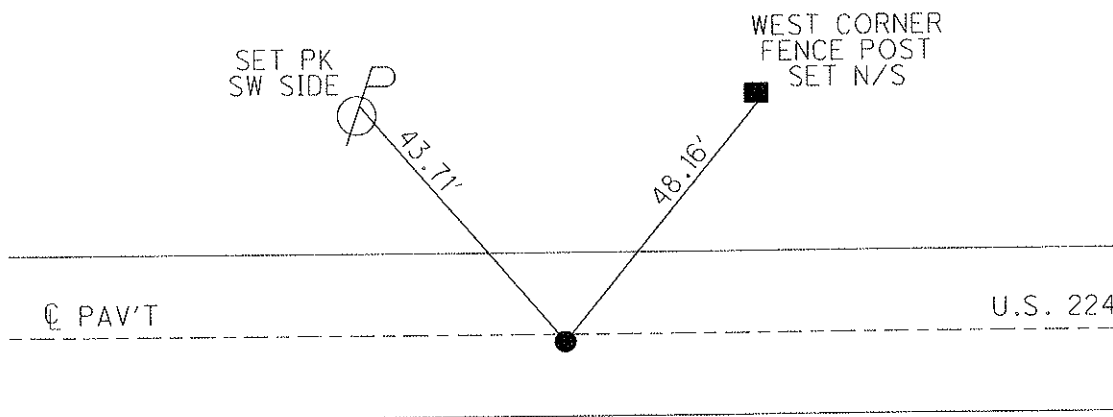
9.2' TO LT. EDGE PAVEMENT

S.L.M. 1333 + 82.41

Grid: Northing: 515607.855 Easting: 1843995.217



RECORD: 11-02-82
 POT STA 1386+13.1
 SET PK&WASHER 1.5" BELOW
 SURFACE ATOP RR SPK
 RR SPK - FIELD BOOK#59
 (FROM LOFT)



FD P.K./WASHER
 7/1/92 JLR

RESET P.K./WASHER
 12/7/92 JLR

FD P.K./WASHER
 5/6/08

SET MAG/WASHER
 8/3/09 MB
 ALL POINTS TIED
 WITH A 200' TAPE.

RESET MAG/WASHER
 10/14/09 KPM

O.D.O.T. DISTRICT 2 SURVEY OFFICE

PERSONNEL

REFERENCE NO. 80

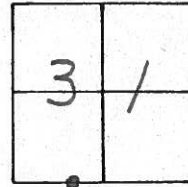
SHEET 18 OF 32

NOTES Cheney
 H.C. RIPPLE
 R.C. BARBOUR
Geyman

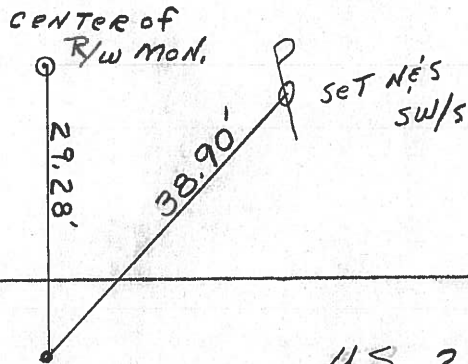
DATE 7-01-92
 WEATHER Cloudy
 TEMP. 65°

ROUTE U.S. 224
 COUNTY Seneca
 TOWNSHIP Reed
 SECTION 31
T 2 N R 17 E

TYPE MONUMENT 7-01-92 Ed. P.K. & Washer Reset P.K. & Washer
 ON SURFACE - BELOW yes 12-07-92
 LEFT - CL PAV'T. - RIGHT 1' J.L.R.
9' TO LT. EDGE PAVEMENT
 S.L.M. 1333 + 44



Record: 11-02-82
 P.O.T. STA. 1386+13.1±
 P.K. & Washer 1 1/2" below
 SURFACE ATop RR. spk.
 RR. spk. - Field Book #59
 (From Left)



CL PAVM'T.

U.S. 224

County Seneca S.R. 224

Date 11/02/82 Drawn 11/04/82

Township Reed

Weather sunny

Section 31

Temp. 62°

T2N, R17E

Personnel Cronin

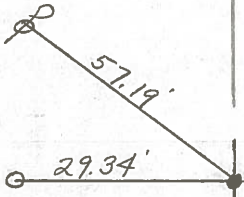
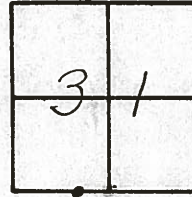
Ripple

Geyman

Messer

Barbour

80



R/w Mon.

P.O.T.

1386 + 13.1 ±

P.K. & washer 1/2" below surface atop R.R. spike

R.R. spike - Field Book #59 (from left)

R.R/w U.S. # 224

PERSONNEL TITLE PERSONNEL TITLE
 Schneider _____
 Mosser _____
 Barbour _____
 Potts _____

COUNTY Seneca DATE 4-2-68
 S. R. U.S. # 224 WEATHER Fair
 SEC. S.R. #100 to Attica TEMP. 45°

DESCRIPTION Ties for Control Points JOB NO. _____

82

5/102/82
 sunny 62°
 1405 + 85 ±

P.O.T.
 1403 ±
 R.R. spk.
 Reset P.K. Nail

16" Locust
 29.88
 85

5/24/82
 over east 68°

29.59
 29.63

R/W Mon.

81

8627

set P.K. washer
 P.I.
 1394 ±
 R.R. spk.
 Reset P.K. Nail & washer
 1' R.L. & P.V.T.

Fence Posts
 41.30
 31.32
 31.15

71.31

33.89

Br. 26.44

80

Did not reset

P.O.T.
 1384 + 1386 ± 28

R.R. spk.
 Reset P.K. Nail & washer
 1' L &

57.19
 58.90
 29.38
 34

41.30
 Plumb

73.92

R/W Mon.

78

set P.K. washer
 P.I.
 1368 ± 8624

R.R. spk.
 Reset P.K. Nail & washer
 14" Walnut
 607 ±

SW. Port
 Brick school
 Top stone
 31

56.33
 60.56
 56.85
 607 ±

43.88
 62.72
 57.34

6 Rd. #23
 North & South

1

R/W Mon.

PERSONNEL TITLE PERSONNEL TITLE

KRABILL
Kowaleski
Brooks

COUNTY Seneca DATE _____

S. R. 224 WEATHER _____

SEC. _____ TEMP. _____

DESCRIPTION LEFT Reed CENTER LINE RIGHT Venice JOB NO. _____

