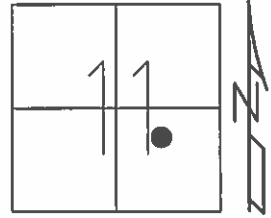


O.D.O.T. DISTRICT 2 SURVEY OFFICE (USE ONLY)

PERSONNEL	REFERENCE NO.	91 A	SHEET	12	OF	13
NOTES	LEU	DATE	06-02-2015	ROUTE	224	
H.C.	O'DONNELL	WEATHER	CLOUDY	COUNTY	SENECA	
R.C.	RHOADES	TEMP.	80°	TOWNSHIP	VENICE	
	-----			SECTION	11	
				T	1	N
				R	18	E

TYPE MONUMENT _____ P.K.NAIL _____
 ON SURFACE - ~~BELOW~~ _____ ON _____
 LEFT - ☉ PAV'T - ~~RIGHT~~ _____ 2' _____
10.5' TO LT EDGE PAVEMENT
 S.L.M. 1623+23



GRID: NORTHING: 507649.5288 EASTING: 1865698.095

RECORD:
 P.O.T. STA. 1622+78.07
 S.L.M. 1623+80
 FD. RR SPK
 07-18-83

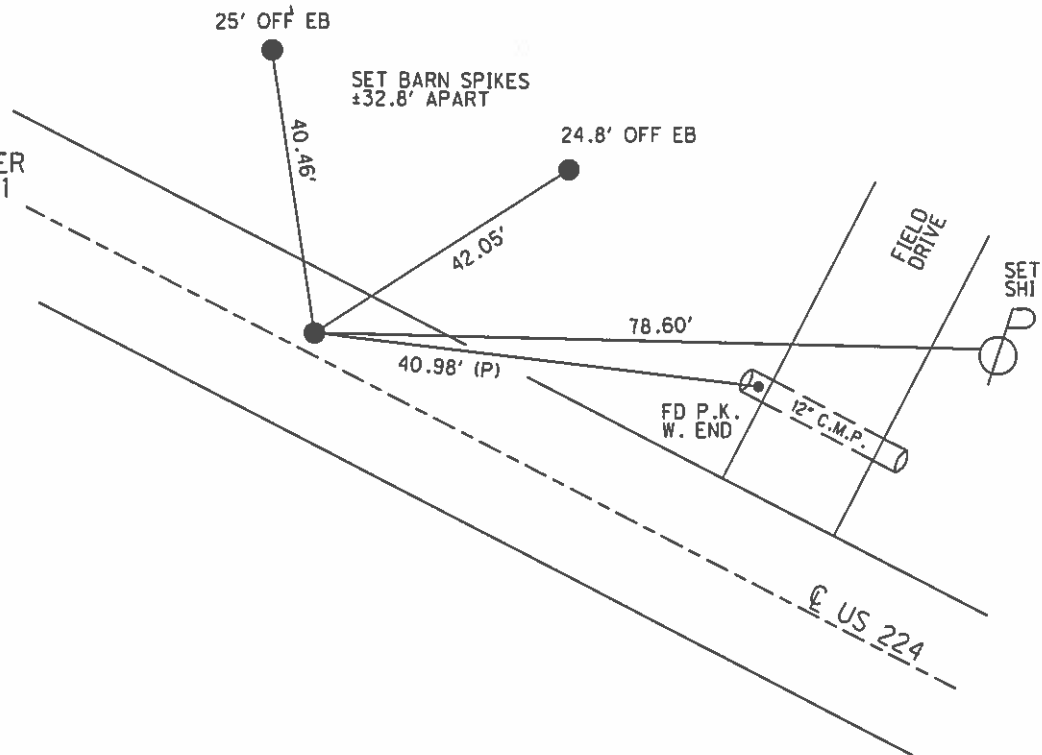
SET PK/WASHER
 11-03-83

SET PK/WASHER
 09-10-93

FD PK/WASHER
 09-02-09

FD PK NAIL
 GPS, REFA91
 06-02-15

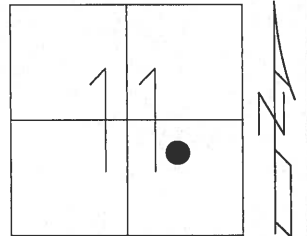
SET MAG/WASHER
 GPS, NEWREFA91
 9-21-16, JFO



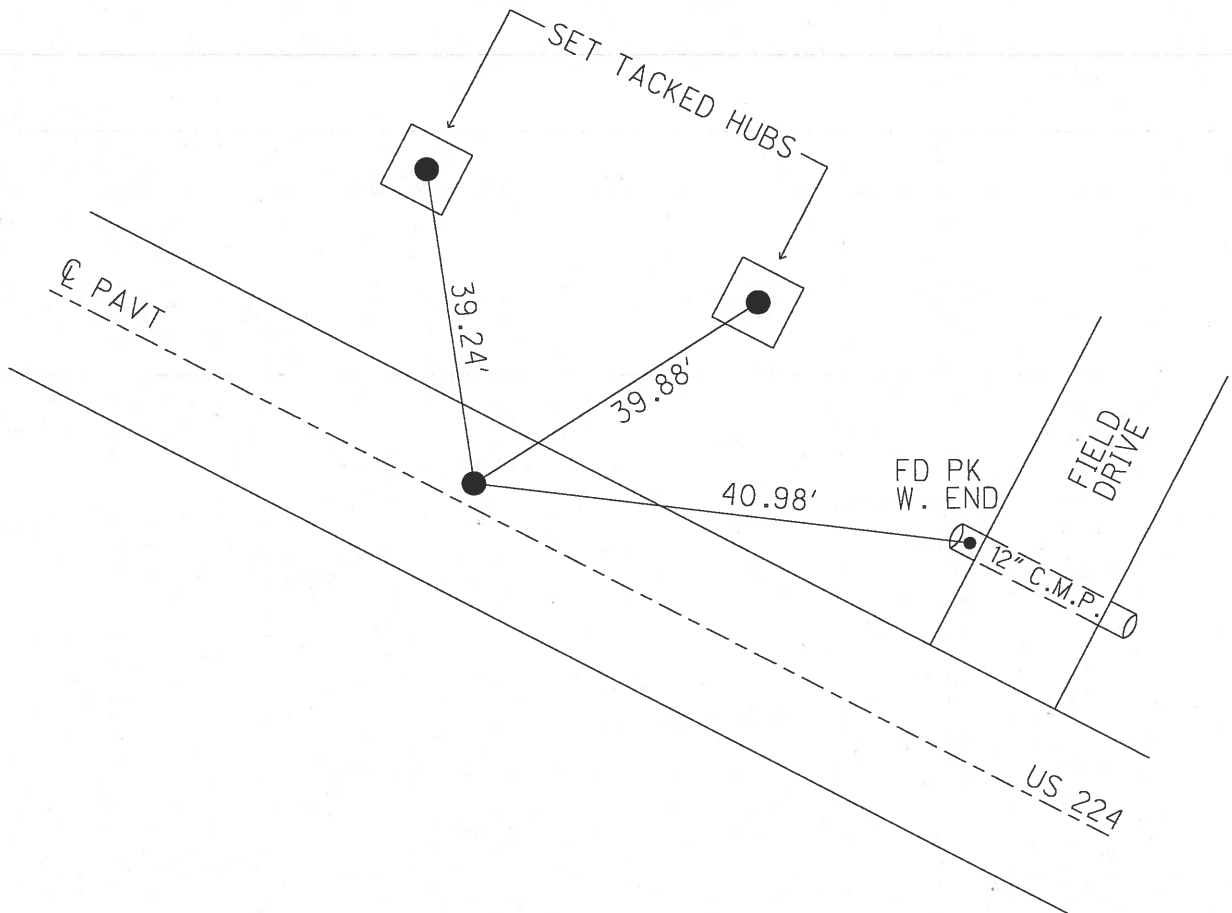
O.D.O.T. DISTRICT 2 SURVEY OFFICE (USE ONLY)

PERSONNEL	REFERENCE NO. <u>91-A</u>	SHEET <u>5</u> OF <u>6</u>
NOTES <u>CHENEY</u>	DATE <u>07-19-93</u>	ROUTE <u>224</u>
H.C. <u>RIPPLE</u>	WEATHER <u>CLOUDY</u>	COUNTY <u>SENECA</u>
R.C. <u>BARBOUR</u>	TEMP. <u>80°</u>	TOWNSHIP <u>VENICE</u>
<u>GEYMAN</u>		SECTION <u>11</u>
		T <u>1</u> N R <u>18</u> E

TYPE MONUMENT PK/WASHER
 ON SURFACE - BELOW ON
 LEFT - ☉ PAV'T - RIGHT 2'
10.5' TO LT EDGE PAVEMENT
 S.L.M. 1569+92



Grid: Northing: _____ Easting: _____



RECORD: 07-18-83
 P.O.T. STA. 1622+78.07
 S.L.M. 1623+80
 FD. RR SPK
 SET PK/WASHER 11-03-83
 SET PK/WASHER 09-10-93
 FD PK/WASHER 09-02-09

County SENECA S.R. U.S. 224

Date 7-18-83

Township VENICE

Weather HAZY

Section 11

Temp. +70°

T N, R E

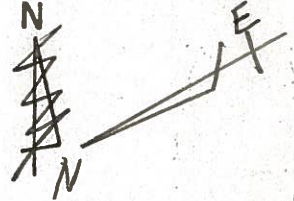
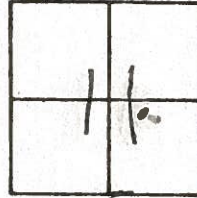
Personnel HOFFMAN

HOUSEHOLDER

LOEHRKE

BARNISEL

91-A



1622+78.07

P.O.T.

FD. R.R. SPK

S.L.M. 1623+80

1.6' LT. OF ϕ

10.3 N. E.P.

14.3 S. E.P.

SET P.K./WASHER

11-3-83

S.W.H.

FIELD
DR.

SET. P.K.
TOP W/END
12" C.M.P.

TACKED
HUB.

37.48

41.02'

27.27' HUB

27.56'

HUB

224

U.S.

PERSONNEL TITLE PERSONNEL TITLE

COUNTY Seneca DATE 1-13-66

S. R. U.S. # 224 WEATHER

SEC. TEMP.

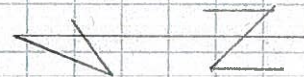
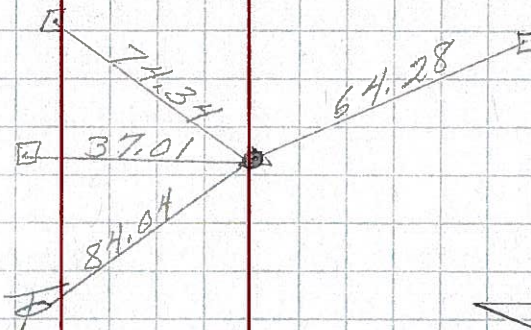
DESCRIPTION Attica - Huron Co Line JOB NO.

LEFT CENTER LINE RIGHT

91-A

P.O.T.
1622 + 78.07
R.R. SPK.

8646



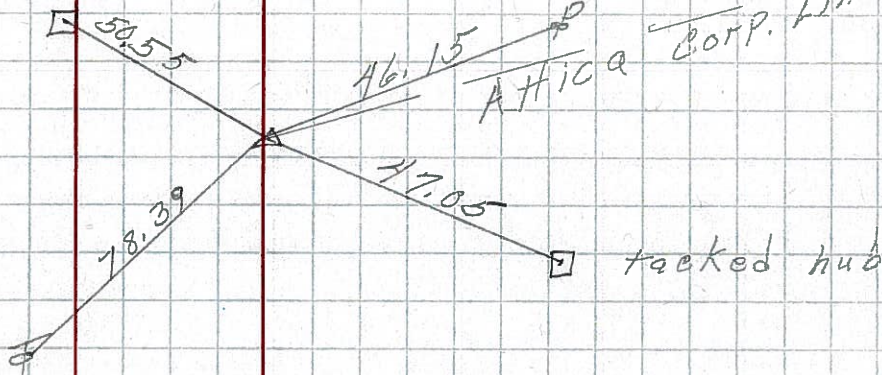
91

P.I.
1612 + 83.64
 $\Delta = 1^\circ 23' Lt.$
R.R. SPK.

209

8645

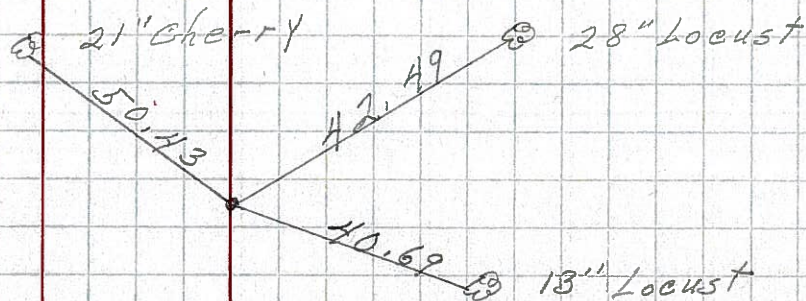
Tacked Hub



90-A

P.O.T.
1609 + 36.58
R.R. SPK.

208 8644



PERSONNEL TITLE PERSONNEL TITLE

COUNTY Seneca DATE 1-13-66

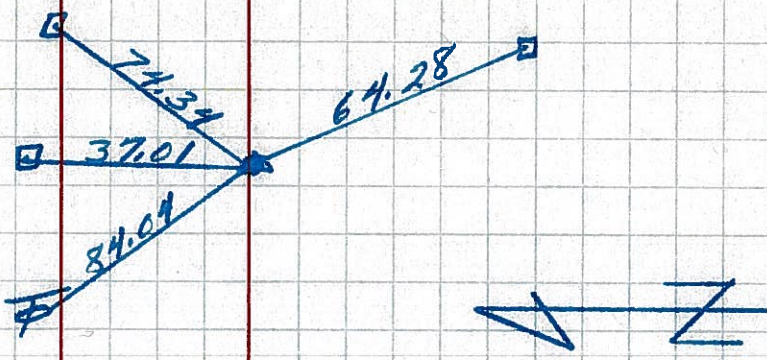
S. R. U.S. # 224 WEATHER

SEC. TEMP.

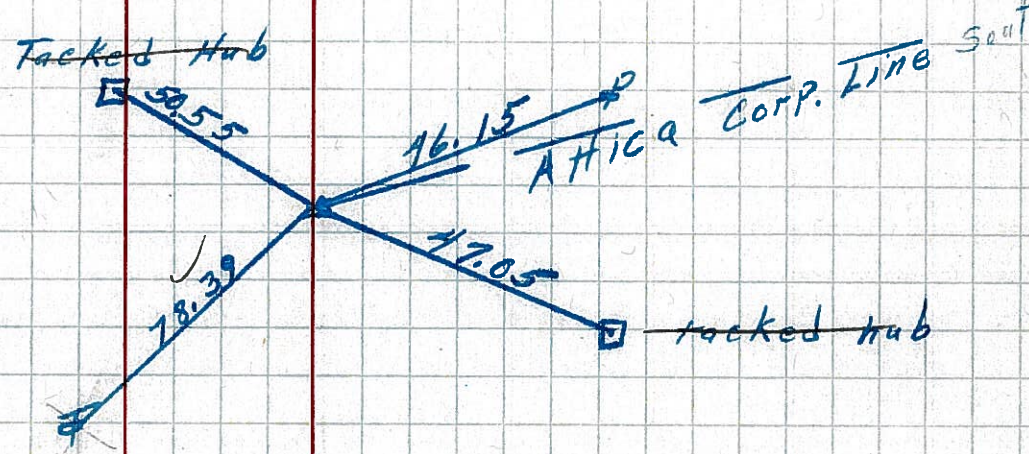
DESCRIPTION Attica - Huron Co Line

LEFT CENTER LINE RIGHT

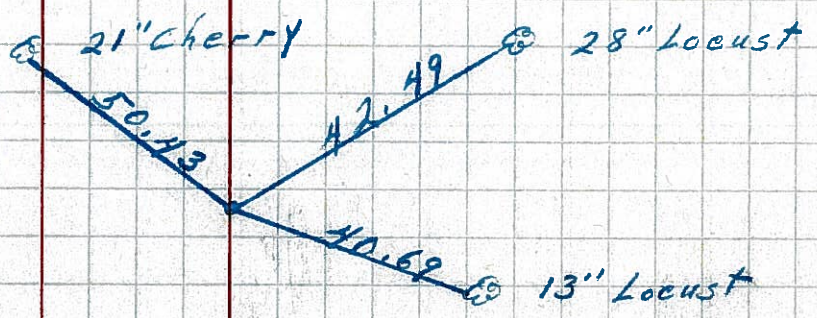
91-A
 P.O.T.
 ✓ 1622+78.07
 R.R. SPK.



91
 P.I.
 ✓ 1612+83.64
 Δ = 1° 23' Lt.
 R.R. SPK.
 209



90-A
 P.O.T.
 ✓ 1609+36.58
 R.R. SPK.
 208



PERSONNEL TITLE PERSONNEL TITLE
 Cronin Schneider
 Barbour Messer
 Ripple

COUNTY Seneca

DATE Aug. 7/63

S. R. #228

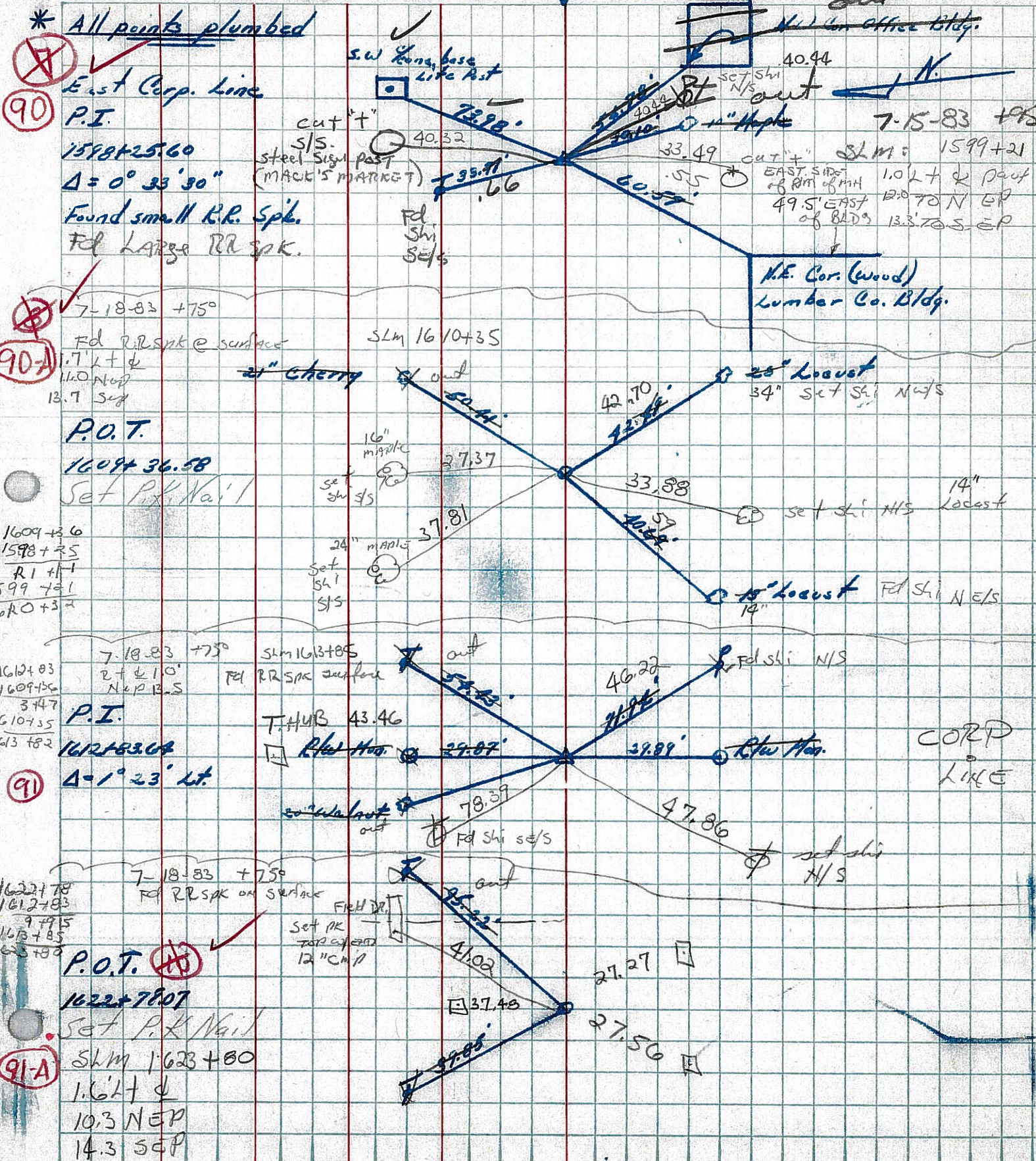
WEATHER

SEC Attica East to Co. Line

TEMP.

DESCRIPTION Ties for Control Points

JOB NO.



* All points plumbed
 East Corp. Line
 P.I.
 1598 + 25.60
 $\Delta = 0^\circ 33' 30''$
 Found small R.R. Spk.
 Fd Large RR Spk.

7-18-83 +75°
 Fd RR Spk @ surface
 1.7 L + ϕ
 14.0 NEP
 13.7 SEP
 P.O.T.
 1609 + 36.58
 Set P.K. Nail
 1609 + 36.6
 1598 + 25
 R1 + 11
 199 + 21
 160 + 37

7-18-83 +75°
 SLM 1610 + 35
 Fd RR Spk surface
 2 + ϕ 10'
 NEP 13.5
 3 + 47
 610 + 35
 613 + 82
 P.I.
 T. HUB 43.46
 R.R. Hub
 1612 + 83.04
 $\Delta = 1^\circ 23' Lt.$

7-18-83 +75°
 Fd RR Spk on surface
 FIELD PK
 Set PK TOP of 12" CM P
 P.O.T.
 1622 + 78.07
 Set P.K. Nail
 SLM 1623 + 80
 1.6 L + ϕ
 10.3 NEP
 14.3 SEP

sw base like Post
 cut "t"
 S/S.
 steel sign post (MACK'S MARKET)
 40.32
 73.98
 33.49
 60.57
 Fd Shi S/S

SLM 1610 + 35
 2" cherry
 16" maple
 set shi S/S
 24" maple
 set shi S/S
 27.37
 37.81
 33.88
 42.70
 72.88
 14" locust
 34" set shi N/S

SLM 1613 + 85
 Fd RR Spk surface
 T. HUB 43.46
 R.R. Hub
 29.07
 78.39
 Fd Shi S/S

FIELD PK
 Set PK TOP of 12" CM P
 41.02
 37.48
 27.27
 27.56
 47.86
 set shi H/S

RIGHT
 out
 N.W. Cor. office Bldg.
 40.44
 set shi N/S
 out
 1" Maple
 7-15-83 +75°
 SLM: 1599 + 21
 EAST SIDE of RM of MH
 49.5' EAST of BLDG
 1.0 L + ϕ Part
 12.0 TO NEP
 13.3 TO SEP

N.E. Cor. (wood) Lumber Co. Bldg.
 14" locust
 14" locust
 Fd Shi N/S

Fd Shi N/S
 R.R. Hub
 32.89
 R.R. Hub
 CORP LINE

set shi H/S