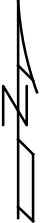
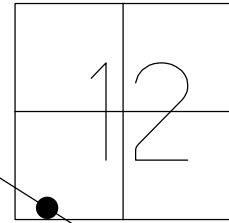


O.D.O.T. DISTRICT 2 SURVEY OFFICE (USE ONLY)

PERSONNEL	REFERENCE NO.	<u>91 G</u>	SHEET	<u>5</u>	OF	<u>9</u>
NOTES	LEU	DATE	<u>06-04-15</u>	ROUTE	<u>US 224</u>	
H.C.	<u>O'DONNELL</u>	WEATHER	<u>SUNNY</u>	COUNTY	<u>SENECA</u>	
R.C.	<u>RHOADES</u>	TEMP.	<u>74°F</u>	TOWNSHIP	<u>VENICE</u>	
				SECTION	<u>12</u>	
				T	<u>1</u>	N
				R	<u>18</u>	E

TYPE MONUMENT      P.K./WASHER       
 ON SURFACE - ~~BELOW~~      ON       
 LEFT -      PAV'T - RIGHT      ON       
12' TO S EDGE PAVEMENT  
 S.L.M. 1686+40 REC  
 GRID: NORTHING: 505058.2459 EASTING: 1871373.082



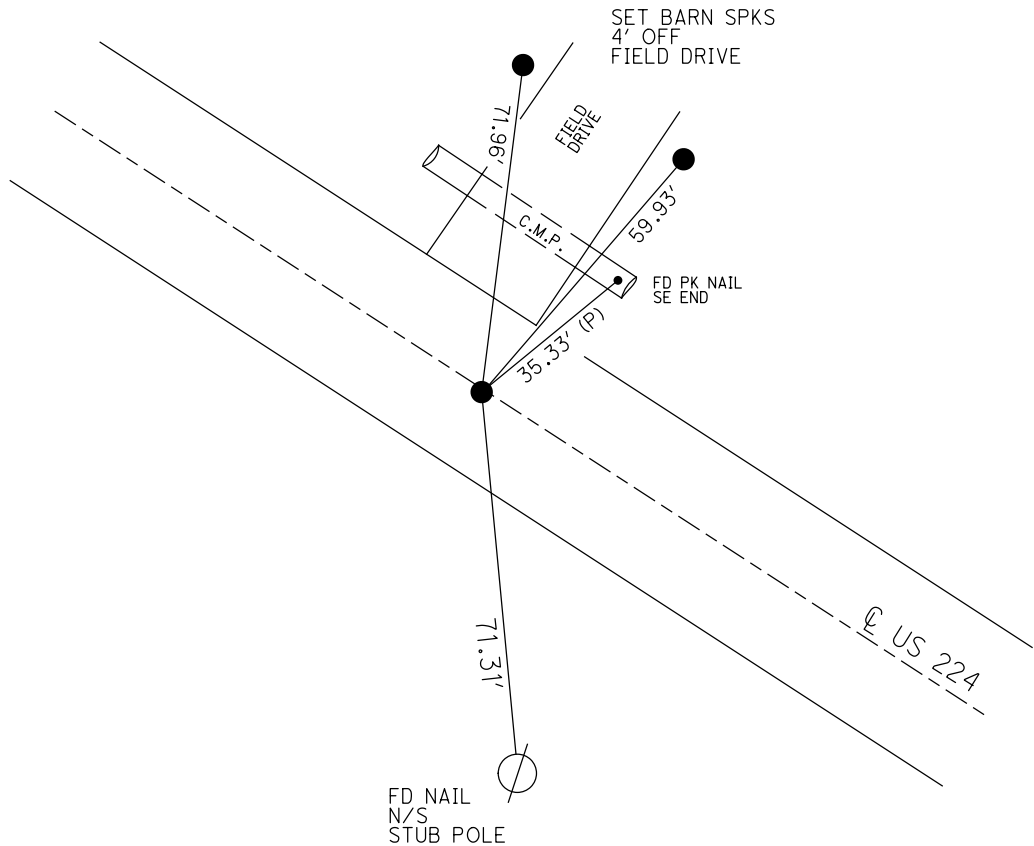
RECORD  
 P.I.STA. 1685+16.43  
 $\Delta = 00^\circ 11' RT$   
 S.L.M.1686+40  
 7-08-83

SET P.K./WASHER  
 11/8/83

SET P.K./WASHER  
 9/10/93 RCC

FD PK/WASHER  
 GPS, REFG91  
 06-04-15

SET MAG/WASHER  
 GPS, NEWREG91  
 9-22-16, JFO



O.D.O.T. DISTRICT 2 SURVEY OFFICE

PERSONNEL

REFERENCE NO. 91 G

SHEET 18 OF 22

NOTES CHENEY

DATE 7/20/93

ROUTE US 224

H.C. RIPPLE

WEATHER FAIR

COUNTY SENECA

R.C. BARBOUR

TEMP. 80°

TOWNSHIP VENICE

GEYMAN

SECTION 12

T 1 N R 18 E

TYPE MONUMENT P.K./WASHER

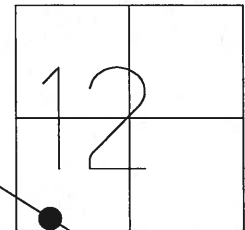
ON SURFACE - ~~BELOW~~ ON

LEFT - C PAV'T - RIGHT ON

12' TO S EDGE PAVEMENT

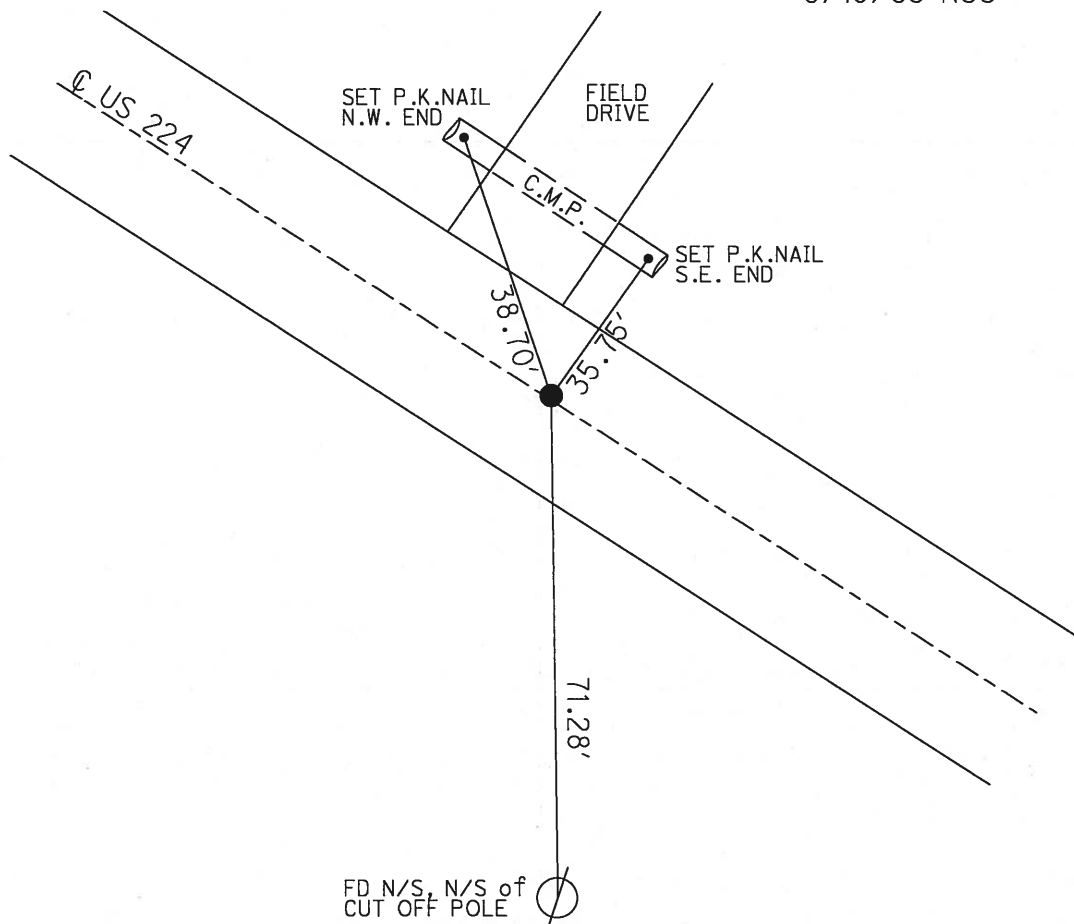
S.L.M. 1632+48

Grid: Northing: \_\_\_\_\_ Easting: \_\_\_\_\_



RECORD: 7/18/1983  
 P.I. STA. 1685+16.43  
 $\Delta = 00^\circ 11' RT$   
 S.L.M. 1686+40  
 SET P.K./WASHER 11/8/83

SET P.K./WASHER  
 9/10/93 RCC



O.D.O.T. DISTRICT 2 SURVEY OFFICE

PERSONNEL

REFERENCE NO. 91-G

SHEET 17 OF 21

NOTES CHENEY

H.C. RIPPLE

R.C. BARBOUR

GEYMAN

DATE 7-20-1993

WEATHER FAIR

TEMP. 80°

ROUTE # 224

COUNTY SENECA

TOWNSHIP VENICE

SECTION 12

T 1 N R 18 E

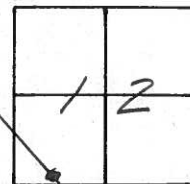
TYPE MONUMENT PK/WASHER

ON SURFACE - ~~BELOW~~ ON

~~LEFT - & PAV'T.~~ RIGHT ON

12' TO S. EDGE PAVEMENT

S.L.M. 1632+48



RECORD: 7-18-1983

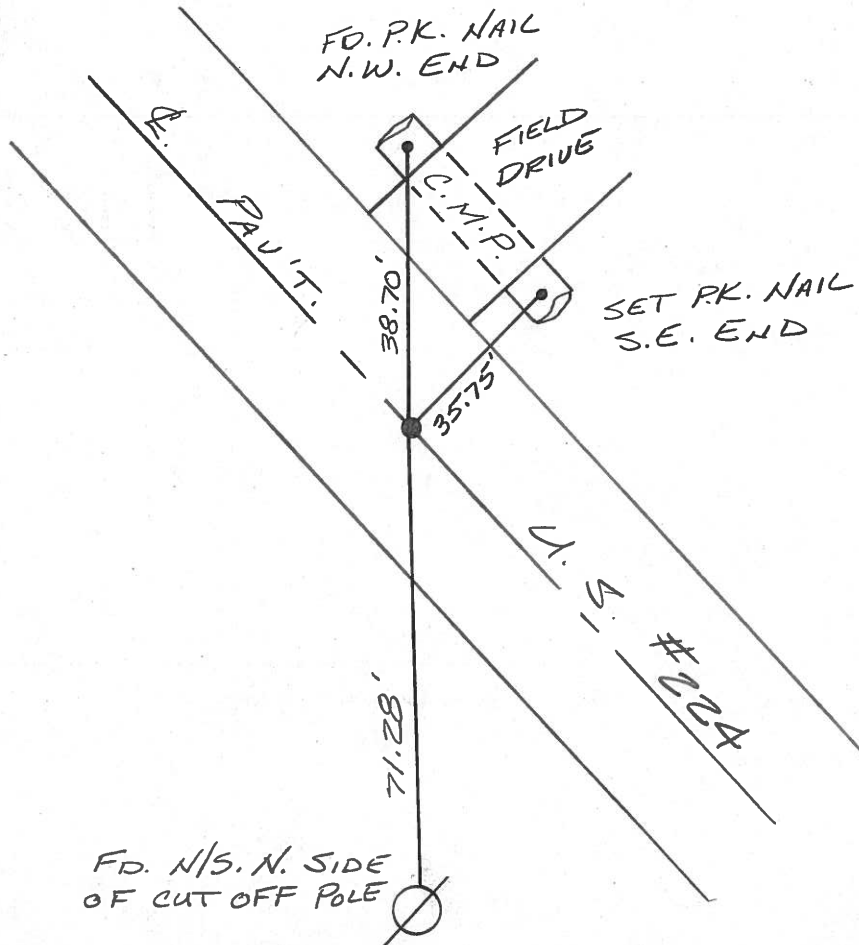
P.I. STA. 1685+16.43

$\Delta = 00^\circ 11' \text{ Rt.}$

SLM. 1686+40

SET PK/WASHER 11-8-83

SET PK/WASHER  
9-10-1993  
RCC



County SENECA ~~S.R.~~ U.S.-224

Date 7-18-83

Township VENICE

Weather HAZY

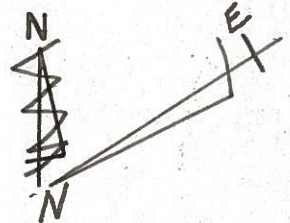
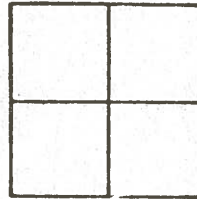
Section 12

Temp. + 85°

T N, R E

Personnel HOFFMAN  
HOUSEHOLDER  
LOENRKE  
BARNISEL

91-6



1685+16.43

$\Delta = 0^\circ - 11' \text{ RT.}$

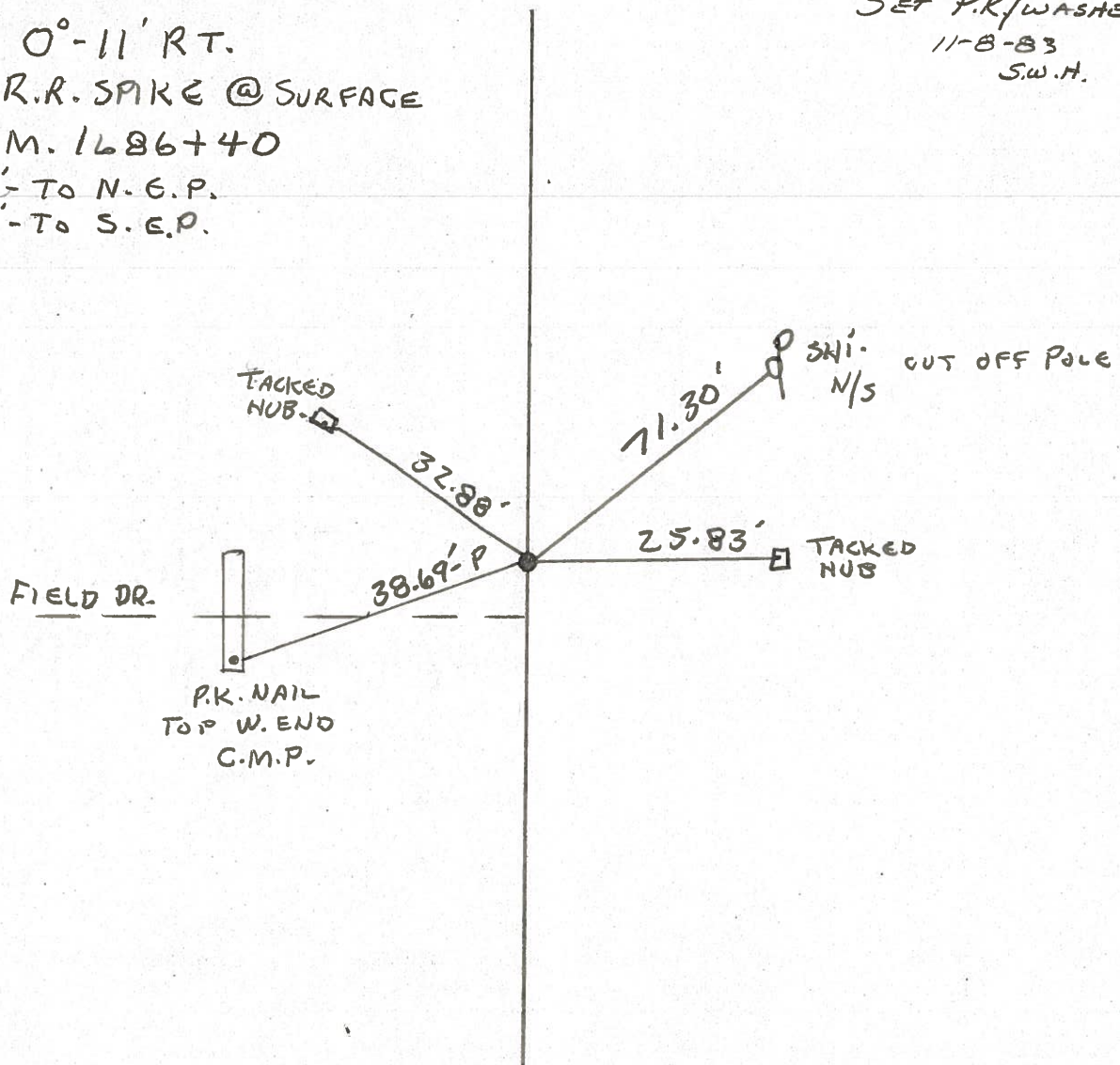
FD. R.R. SPIKE @ SURFACE

S.L.M. 1686+40

11.3' - TO N.G.P.

11.9' - TO S.E.P.

SET P.K./WASHER  
 11-8-83  
 S.W.H.

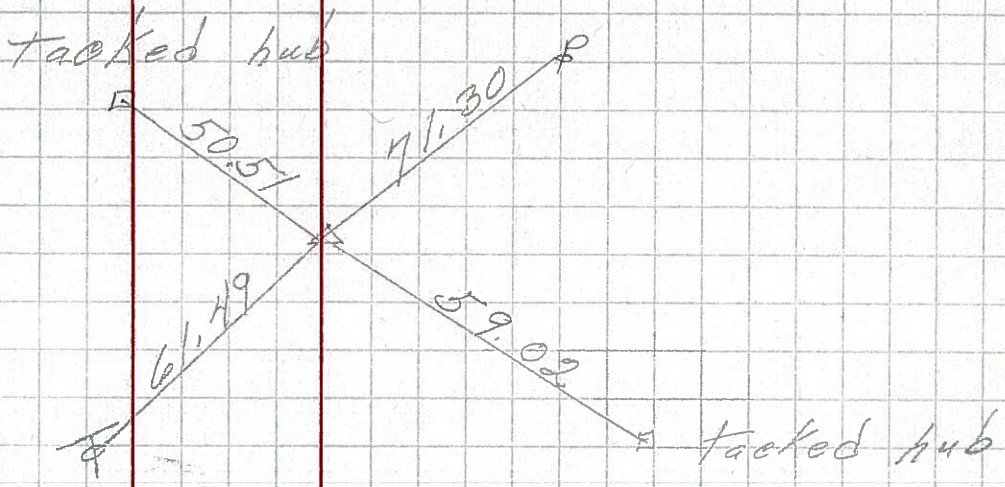




PERSONNEL \_\_\_\_\_ TITLE \_\_\_\_\_ PERSONNEL \_\_\_\_\_ TITLE \_\_\_\_\_  
 COUNTY Seneca DATE 1-13-66  
 S. R. U.S. # 224 WEATHER \_\_\_\_\_  
 SEC. \_\_\_\_\_ TEMP. \_\_\_\_\_  
 DESCRIPTION Atica - Huron Co. Line JOB NO. \_\_\_\_\_  
 LEFT CENTER LINE RIGHT

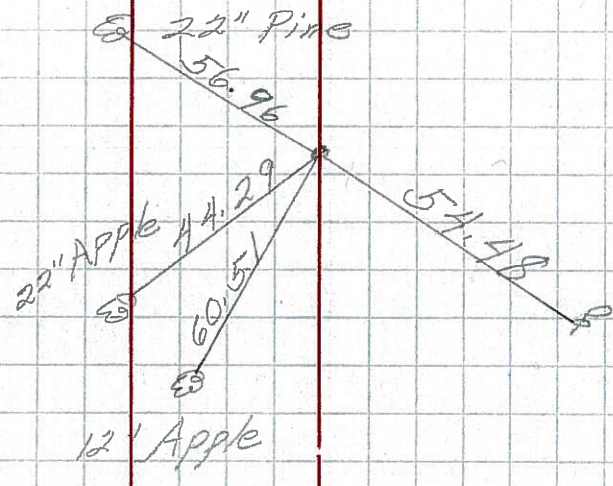
91-G

P.I.  
 1685 + 16.43  
 $\Delta = 0^\circ 11' \text{ Rt.}$   
 R.R. 5PK.  
**2H**  
 8652



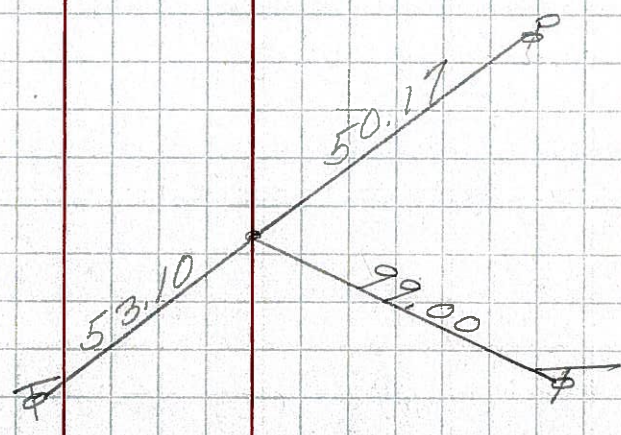
91-F

P.O.T.  
 1670 + 80.25  
 R.R. 5PK.  
 8651



91-E

P.O.T.  
 1663 + 67.23  
 5PK. (R.R.)  
 8650





PERSONNEL \_\_\_\_\_ TITLE \_\_\_\_\_ PERSONNEL \_\_\_\_\_ TITLE \_\_\_\_\_  
 COUNTY Seneca DATE 1-13-66  
 S. R. U.S. # 224 WEATHER \_\_\_\_\_  
 SEC \_\_\_\_\_ TEMP. \_\_\_\_\_  
 DESCRIPTION Atica - Huron G. Line JOB NO. \_\_\_\_\_

1685+16  
 1670+80  
 14+36  
 1671+89  
 1686+35

~~91-G~~  
 P.I.  
 1685+16.43  
 $\Delta = 0^\circ 11' \text{ Rt.}$   
 R.R. SPK.  
 211

1670+80  
 1663+67  
 7+13  
 1664+82  
 1671+97  
 P.O.T.  
 1670+80.25  
 R.R. SPK.

~~91-F~~

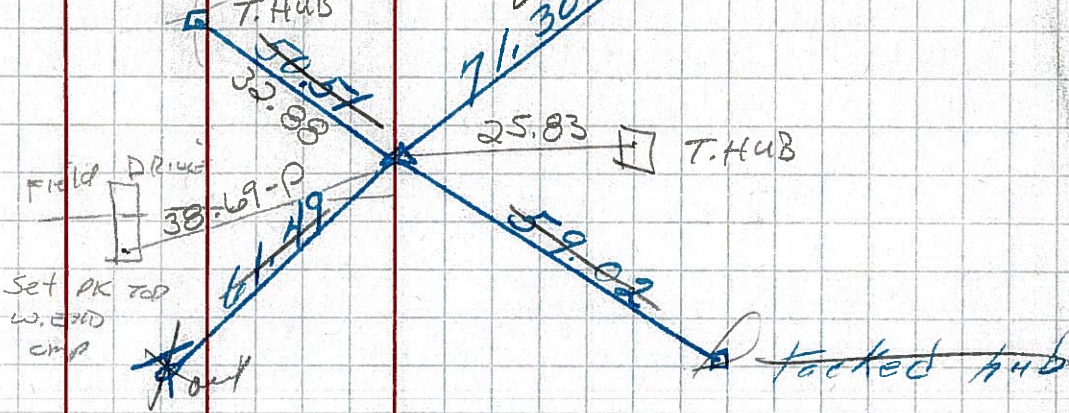
~~91-E~~  
 P.O.T.  
 1663+67.23  
 SPK. (R.R.)

1663+67  
 1650+05  
 13+62  
 1651+16

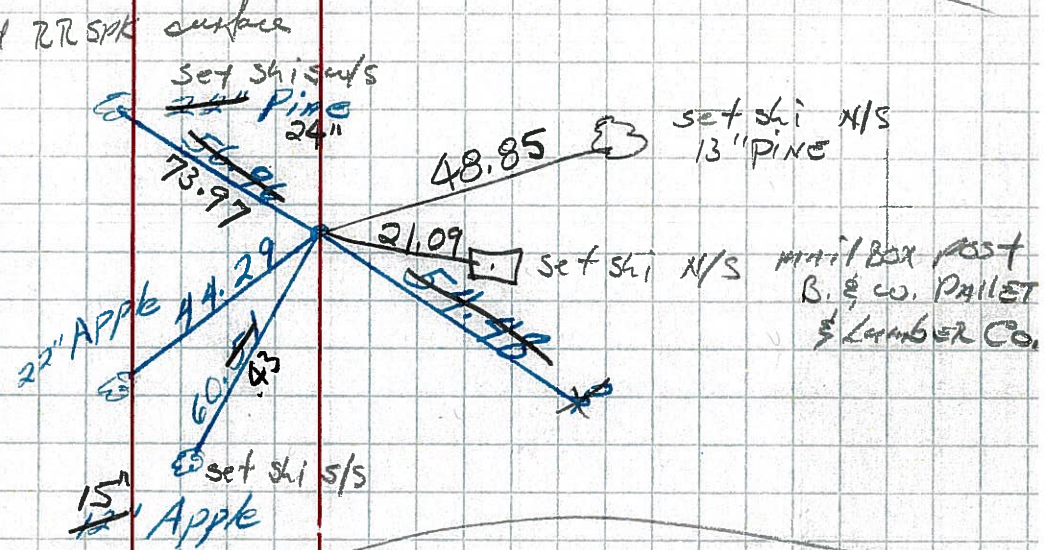
7-18-83 ±800  
 Fd R.R. SPK surface  
 0.5 Lt &  
 11.3N up  
 11.9 S up

SLM = 1686+40

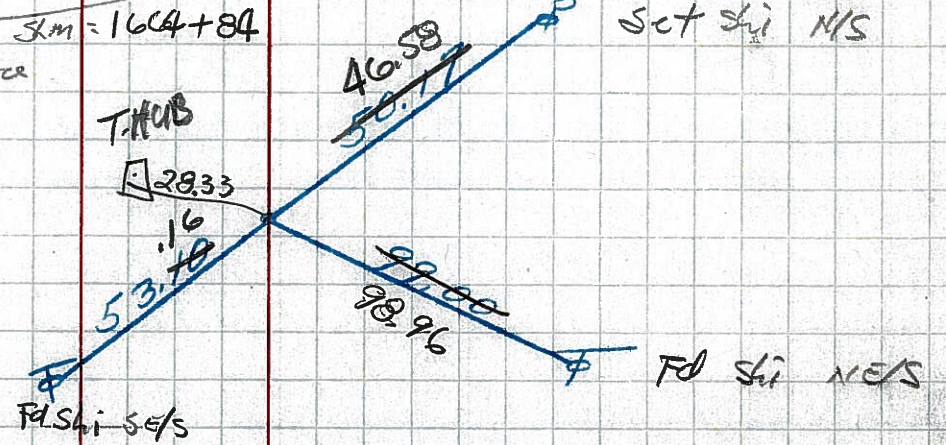
Tacked hub



7-18-83 ±800  
 Fd R.R. SPK surface  
 SLM 1671+99  
 ON &  
 Nop 11.8  
 Sep 11.4



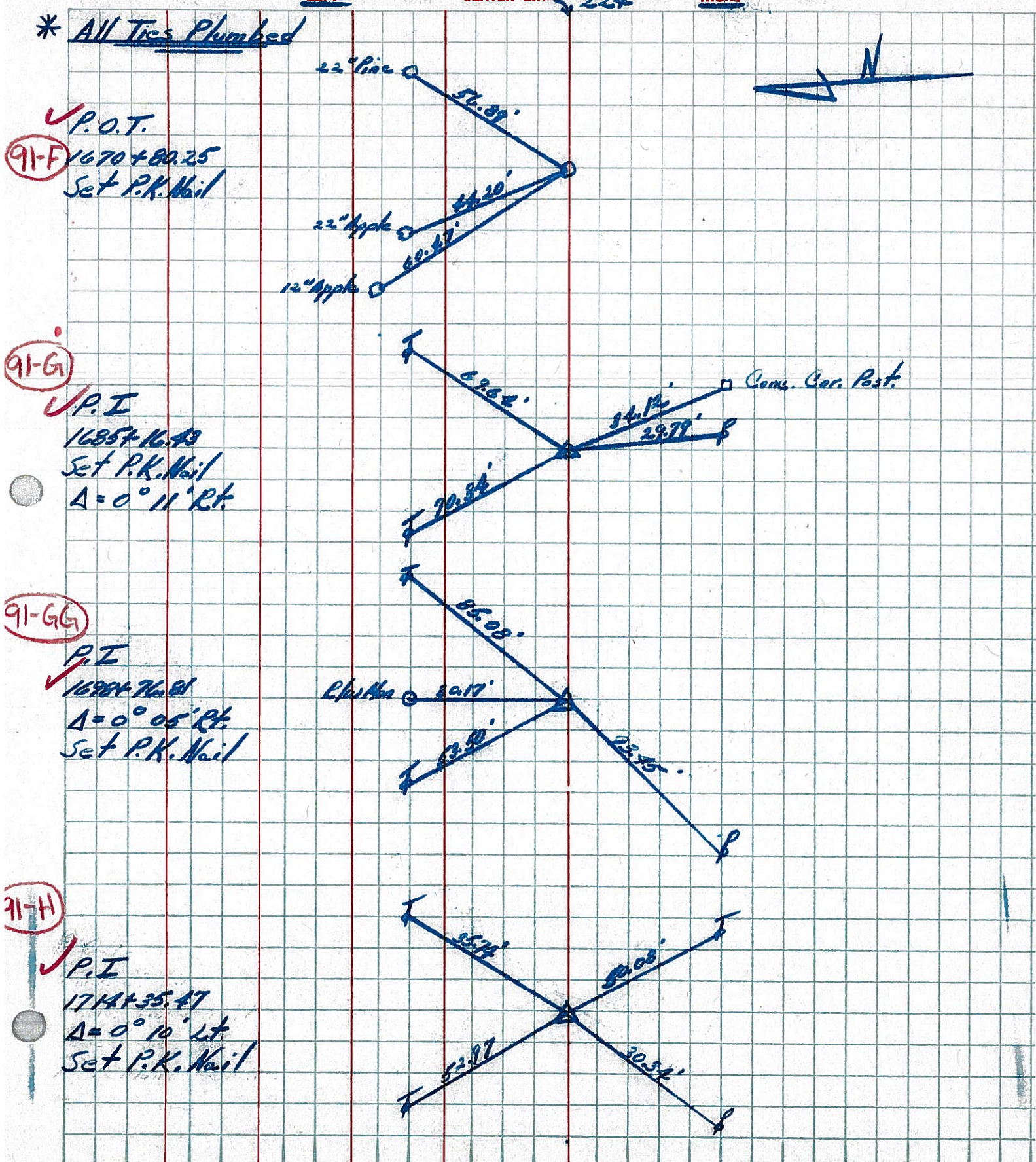
7-18-83 ±800  
 Fd R.R. SPK surface  
 ON &  
 Nop 11.8  
 Sep 11.0





PERSONNEL	TITLE	PERSONNEL	TITLE	COUNTY	DATE
Cronin		Schneider		Saracen	Aug. 9/63
Barbour		Nasser		S. R. #224	WEATHER
Ripple				SEC African East to Co. Line	TEMP

DESCRIPTION Ties for Control Points JOB NO. \_\_\_\_\_





PERSONNEL TITLE PERSONNEL TITLE

COUNTY Seneca DATE 10-11-49

S. R. # 224 WEATHER

SEC. G-D-F-E TEMP.

DESCRIPTION SH. # 272

JOB NO.

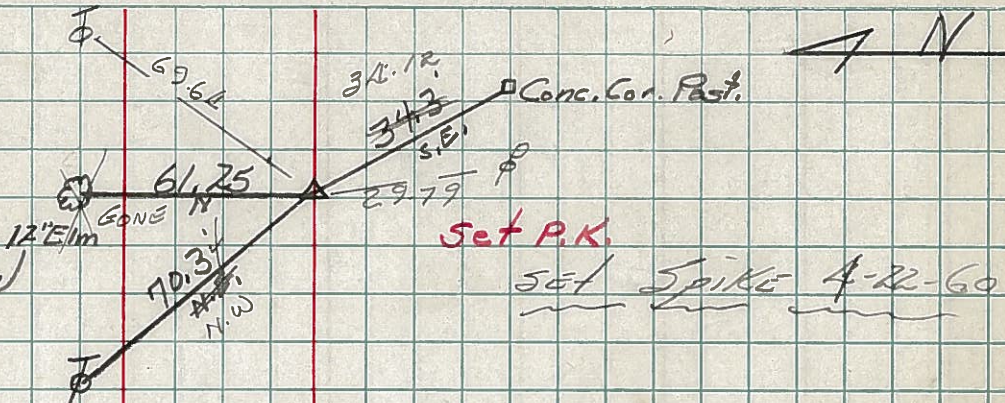
LEFT

CENTER LINE

RIGHT

91-G

Sta. 369+93  
 $\Delta = 0^\circ - 11' \text{ Rt.}$   
R.R. Spike on  $\frac{1}{2}$  of R/W  
1685+18.6 # 211



91-GG

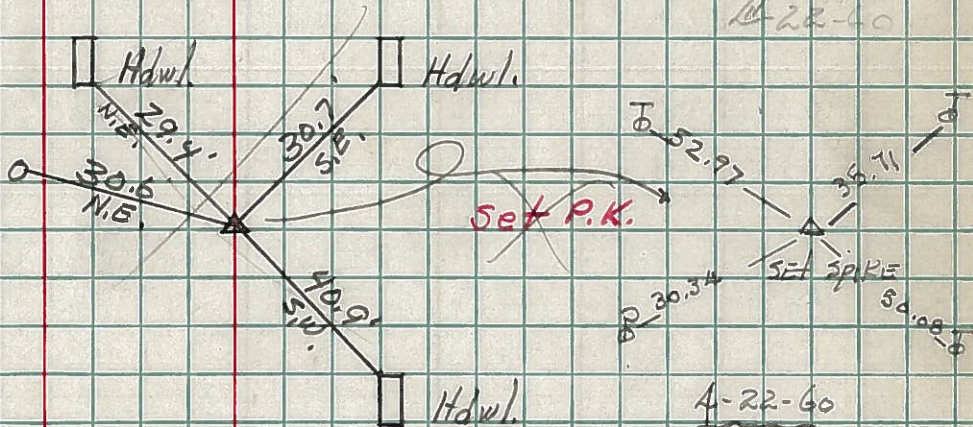
Sta. 383+50.7  
 $\Delta = 0^\circ - 05' \text{ Rt.}$   
R.R. Spk. on  $\frac{1}{2}$  of R/W  
1698+76.3 # 212



Did not find  
did not find  
4-22-60

91-H

Sta. 399+10.7  
 $\Delta = 0^\circ - 09' \text{ Lt}$   
R.R. Spike on  $\frac{1}{2}$  of R/W  
1714+36.3 # 213



1748+52.15 = Survey  
1748+73.6 = S.L.D.

Sta. 433+26.55  
 $\Delta = 20^\circ - 06' \text{ Lt}$   
# 214

Fd. Nothing

Seneca-Huron Co. Line  
End of Sec. E.