

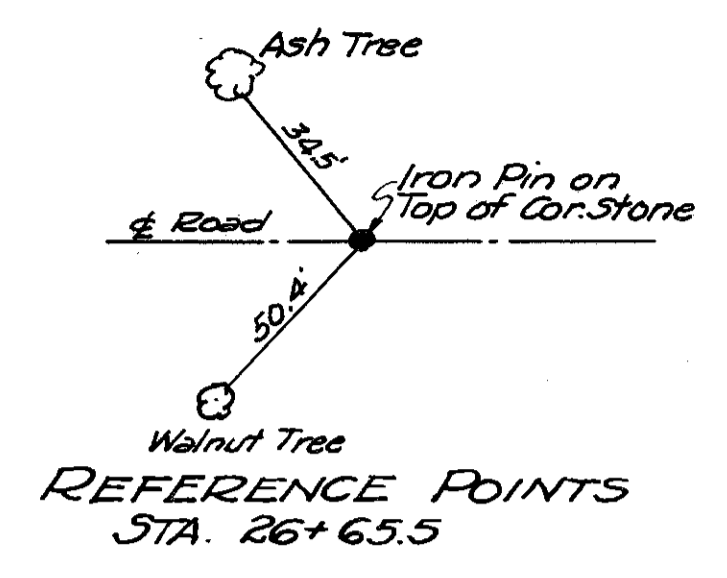
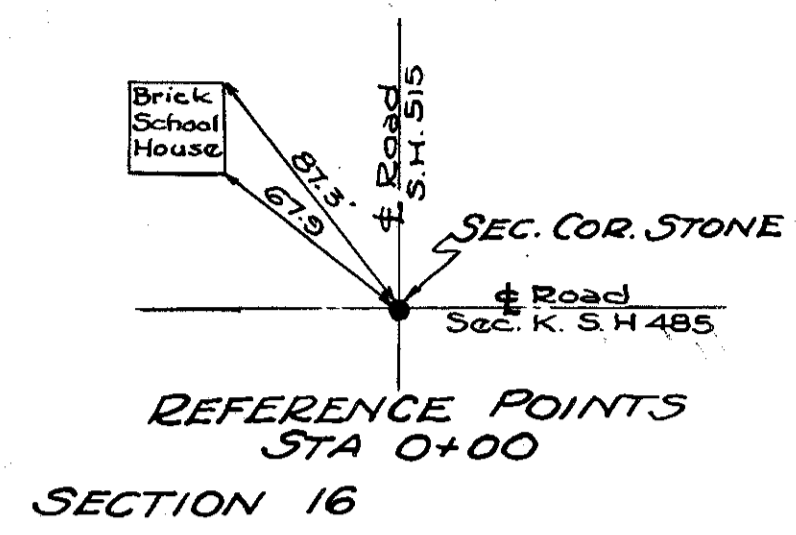
Scanned July 1907

S.H. 485 SECTION "K" SENECA COUNTY R/W PLANS.

1/1

SR 228

R/W checked easement obtained 3/23/44



NORA SHELLHAMMER

WILLIAM S. DROWN

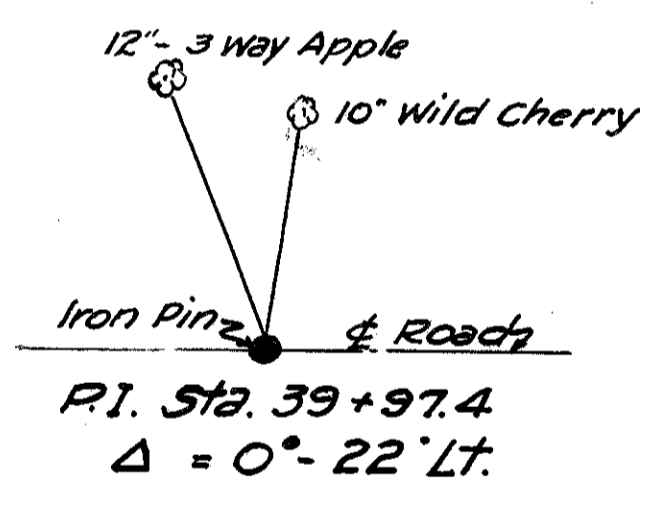
D.L. MILLER

LEITA I. ADAMS

HARRY H. LEE

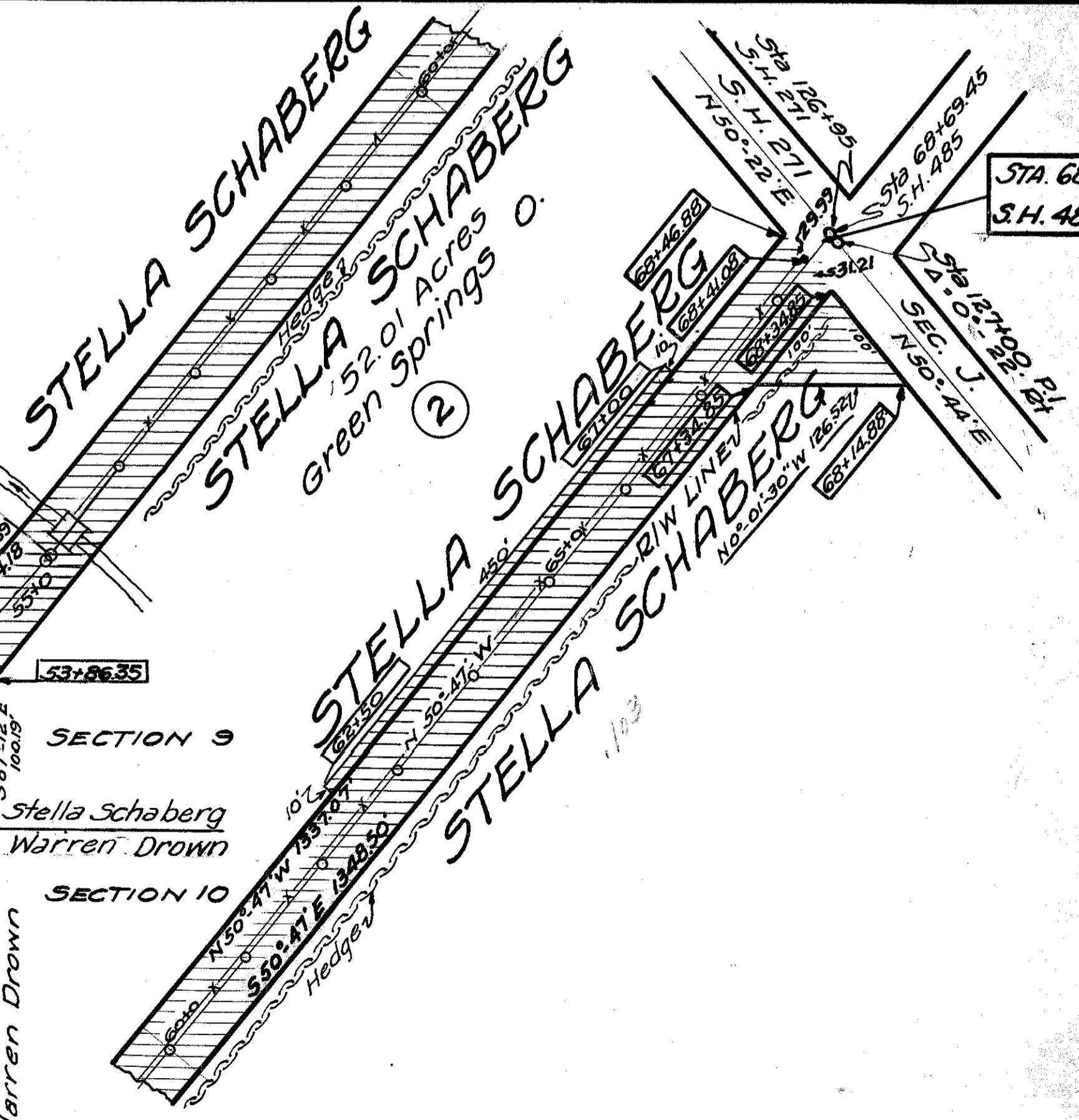
Sta. 0+00 Sec. K. S.H. 485 Beginning of Improvement.

NOTE Center Line can be proven from Station 0+00 to Station 53+18.7



WILLIAM S. DROWN

NELLIE HENNINGER et al. DEED 21.5 Acres 166 1/2 So. Washington St. Tiffin O.



HARRY H. LEE

A.J. THALLMAN

RG228 #1 G-30

G-30