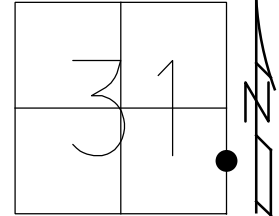


O.D.O.T. DISTRICT 2 SURVEY OFFICE (USE ONLY)

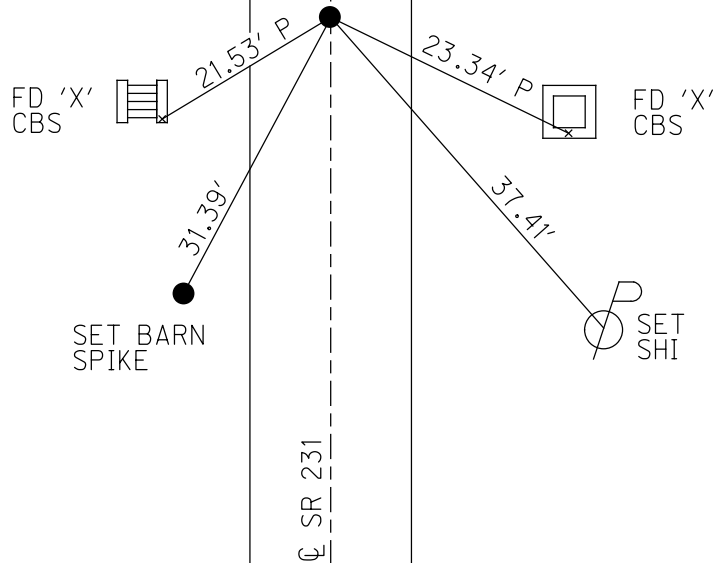
PERSONNEL _____ REFERENCE NO. 1 A SHEET 2 OF 34
 NOTES RHOADES DATE 11/6/23 ROUTE SR 231
 H.C. AUBLE WEATHER SUNNY/WINDY COUNTY SENECA
 R.C. ASTON TEMP. 48° TOWNSHIP EDEN
 NIESE SECTION 31
 DWG BY RHOADES PID 95780 T 1 N R 15 E

TYPE MONUMENT MAG/WASHER
 ON SURFACE - ~~BELOW~~ ON
 OFFSET \varnothing PAVEMENT ON LT : RT
9.9' TO LT EDGE PAVEMENT
 STATION: 11+06



HORZ. DATUM: NAD83(2011) GEOID: NAVD88 2018
 GRID: NORTHING: 485075.788 EASTING: 1783438.777

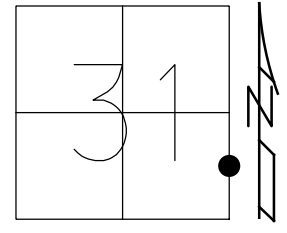
RECORD:
 STA. 11+00
 SM.R.R. SPIKE
 FD SM.R.R. SPIKE
 6/12/97, MB
 SET P.K./WASHER
 8/21/97, MB
 SET MAG/WASHER
 6/08/04
 FD P.K./WASHER
 8/16/04, MC
 FD MAG/WASHER
 REFA1
 3/26/19
 8/16/19, JFO
 FD MAG/WASHER
 REF1A
 4/18/23, TDN
 SET MAG/WASHER
 11/6/23, DSA



O.D.O.T. DISTRICT 2 SURVEY OFFICE (USE ONLY)

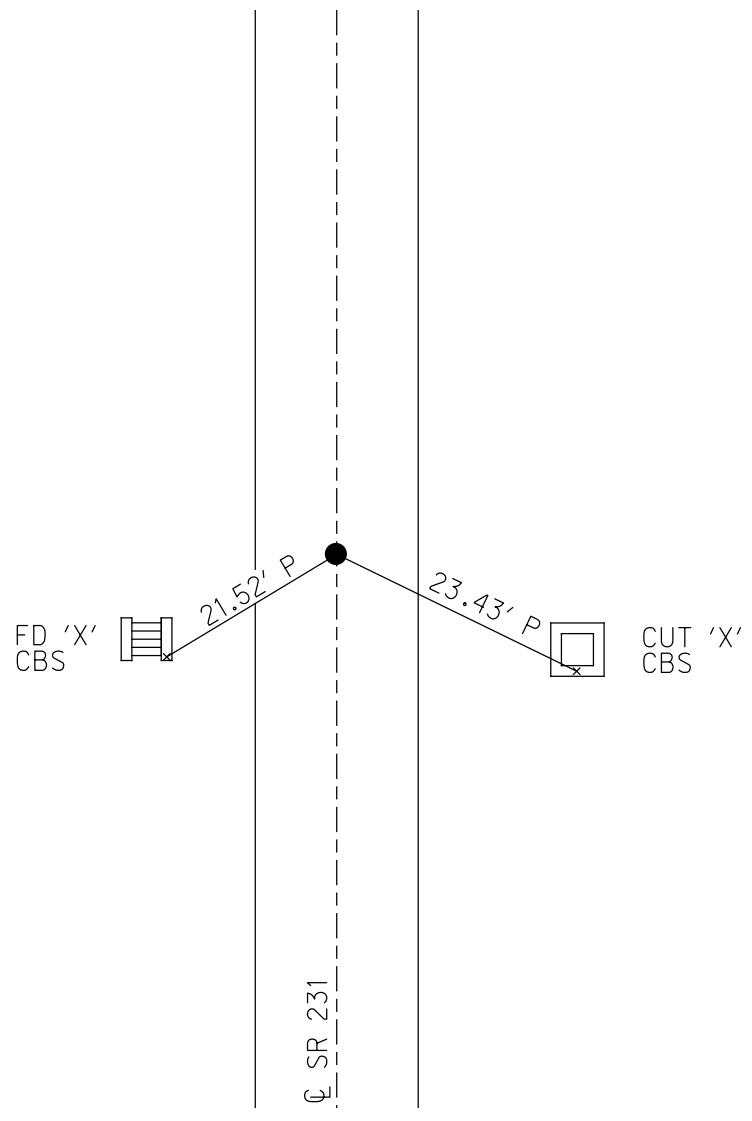
PERSONNEL _____ REFERENCE NO. 1 A SHEET 2 OF 33
 NOTES BARNHEISEL DATE 6/12/97 ROUTE SR 231
 H.C. CANTERBURY WEATHER SUNNY COUNTY SENECA
 R.C. ROUSOS TEMP. 75° TOWNSHIP EDEN
 DWG BY NIESE PID 107060 SECTION 31
 T 1 N R 15 E

TYPE MONUMENT SM.R.R.SPIKE
 ON SURFACE - ~~BELOW~~ ON
 OFFSET \varnothing PAVEMENT ON LT : RT
9.9' TO LT EDGE PAVEMENT
 STATION: 11+06



HORZ.DATUM: NAD83(2011) GEOID: 2012A
 GRID: NORTHING: 485075.788 EASTING: 1783438.777

RECORD:
 STA.11+00
 SM.R.R.SPIKE
 FD SM.R.R.SPIKE
 6/12/97, MB
 SET P.K./WASHER
 8/21/97, MB
 SET MAG/WASHER
 6/08/04
 FD P.K./WASHER
 8/16/04, MC
 FD MAG/WASHER
 REFA1
 3/26/19
 8/16/19, JFO



O.D.O.T. DISTRICT 2 SURVEY OFFICE

PERSONNEL _____

REFERENCE NO. 1-A

SHEET 2 OF 27

NOTES Barrhisel

H.C. Canterbury

R.C. Rouses III

DATE 6-12-97

WEATHER Sunny

TEMP. + 75°F

ROUTE 231

COUNTY S

TOWNSHIP Eden

SECTION 31

T. 1 N. 15 E.

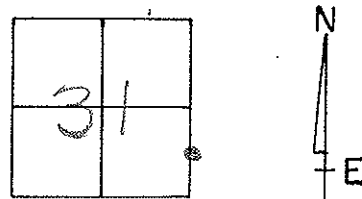
TYPE MONUMENT SM. R.R. SPK. SET mag/washer 06/08/04

ON SURFACE - ~~BELOW~~ ON SURFACE

LEFT ☒ PAV'T. - RIGHT ○

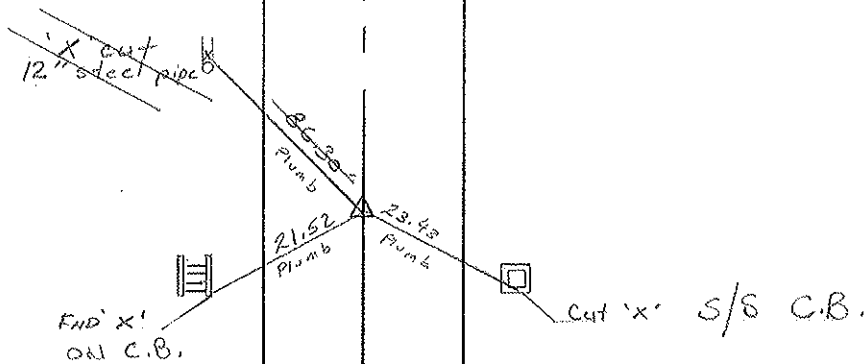
9.9 TO LT EDGE PAVEMENT

S.L.M. 0+337.2 M 11+06



Records:
11400
Small RR Spk.

~~Reset PK/Washer
8-21-97
MB~~



Preventive Maintenance
Chip & Seal 2004
Existing Point Uncovered
Date 08/16/04 mc

PERSONNEL TITLE PERSONNEL TITLE

COUNTY Seneca DATE 2-24-72

S. R. 231 WEATHER

SEC. B TEMP. 42°

DESCRIPTION Wyandot Co. Line to U.S. #224 JOB NO.

LEFT CENTER LINE RIGHT

2

26+337
spk. on E R/W
6" down

~~A~~

fence post
31.32

25.43'

"X" cut in 12"
conc. pipe



~~X~~

1-A

11+00
R.R. spk.
spk. may
move oozy
Black Top

~~X~~

fence post
51.22'
34.29'

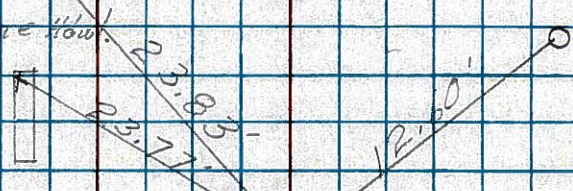


fence post

Gr. Rail Post

"X" on stone Hdwl.

Guard Rail Post



1

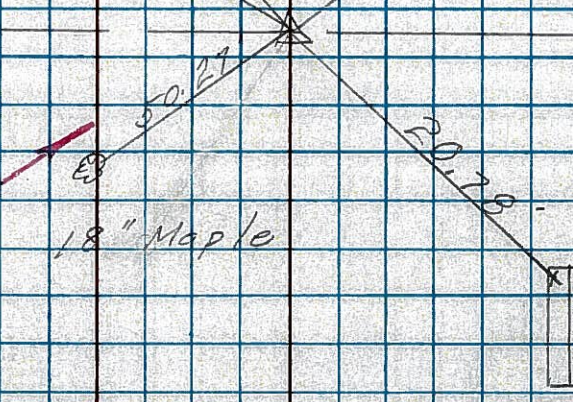
0+00
Iron pin on E R/W
2" down

Seneca, Co.
Wyandot, Co.

18" Maple

"X" on stone Hdwl.

SEE NEW TIES
OF 6/2/82
1/20 PIN



PERSONNEL	TITLE	PERSONNEL	TITLE	COUNTY	DATE
Schneider				Seneca	10-29-69
Mosser				S. R. 231	WEATHER Fair
Potts				SEC. B	TEMP. 35°
DESCRIPTION				Wyandot-Seneca Co. Line to Tiffin	JOB NO.
LEFT		CENTER LINE		RIGHT	

3

52+82
R.R. spk. on E of R/W
7 1/2" down

8663

2

26+33.7
Iron Pin on E R/W
4" down

8662

1-A

11+00
R.R. spk. 3" down
(SPK may move)
(oozy Black top)

8661

1

0+00
Iron Pin on E R/W
2" down

8660

