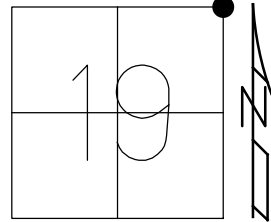


O.D.O.T. DISTRICT 2 SURVEY OFFICE (USE ONLY)

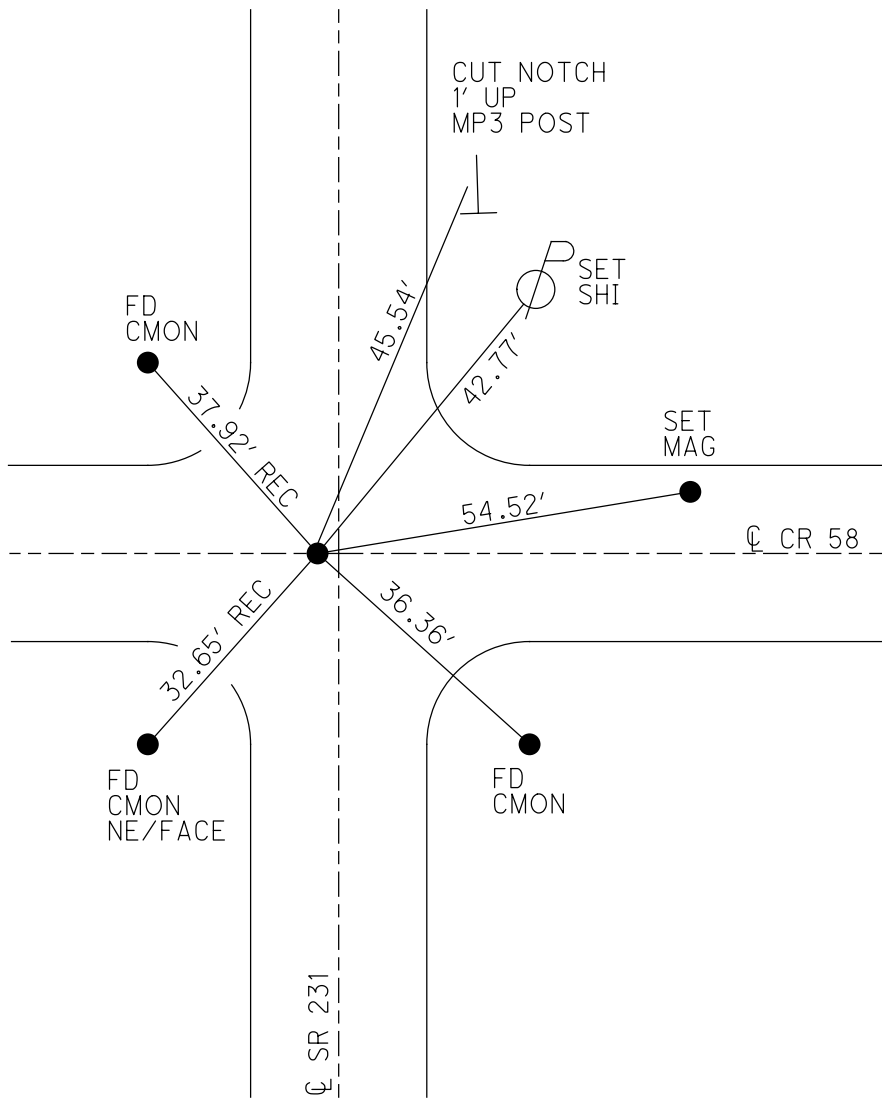
PERSONNEL _____ REFERENCE NO. 10 SHEET 12 OF 34
 NOTES RHOADES DATE 11/6/23 ROUTE SR 231
 H.C. AUBLE WEATHER SUNNY/WINDY COUNTY SENECA
 R.C. ASTON TEMP. 48° TOWNSHIP EDEN
 _____ NIESE SECTION 19
 DWG BY RHOADES PID 95780 T 1 N R 15 E

TYPE MONUMENT MAG/WASHER
 ON SURFACE - ~~BELOW~~ ON
 OFFSET Q PAVEMENT 1.4' LT : ~~RT~~
8.0' TO LT EDGE PAVEMENT
 STATION: 159+07



HORZ.DATUM: NAD83(2011) GEOID: NAVD88 2018
 GRID: NORTHING: 499839.300 EASTING: 1783614.656

RECORD:
 STA.158+64.6
 FD R.R.SPIKE
 4" DOWN
 6/19/97, MB
 SET P.K.NAIL
 8/21/97, MB
 FD P.K./WASHER
 8/16/04, MC
 FD R.R.SPIKE
 4 1/2" DOWN
 REF10
 3/26/19
 8/16/19, JFO
 2/10/23, JMR
 FD R.R.SPIKE
 4" DOWN
 REF10
 4/19/23, TDN
 SET MAG/WASHER
 11/6/23, DSA



O.D.O.T. DISTRICT 2 SURVEY OFFICE (USE ONLY)

PERSONNEL

REFERENCE NO. 10

SHEET 11 OF 33

NOTES BARNHISEL DATE 6/19/97
 H.C. CANTERBURY WEATHER SUNNY
 R.C. ROUSOS TEMP. 70°
WEAVER

ROUTE SR 231
 COUNTY SENECA
 TOWNSHIP EDEN
 SECTION 19

DWG BY NIESE PID 107060

T 1 N R 15 E

TYPE MONUMENT R.R.SPIKE

~~ON SURFACE~~ - BELOW 4"

OFFSET \odot PAVEMENT 1.4' LT : ~~RT~~

8.0' TO LT EDGE PAVEMENT

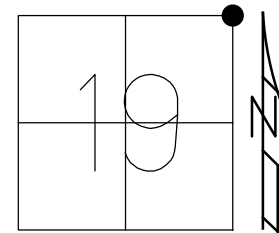
STATION: 159+07

HORZ.DATUM: NAD83(2011)

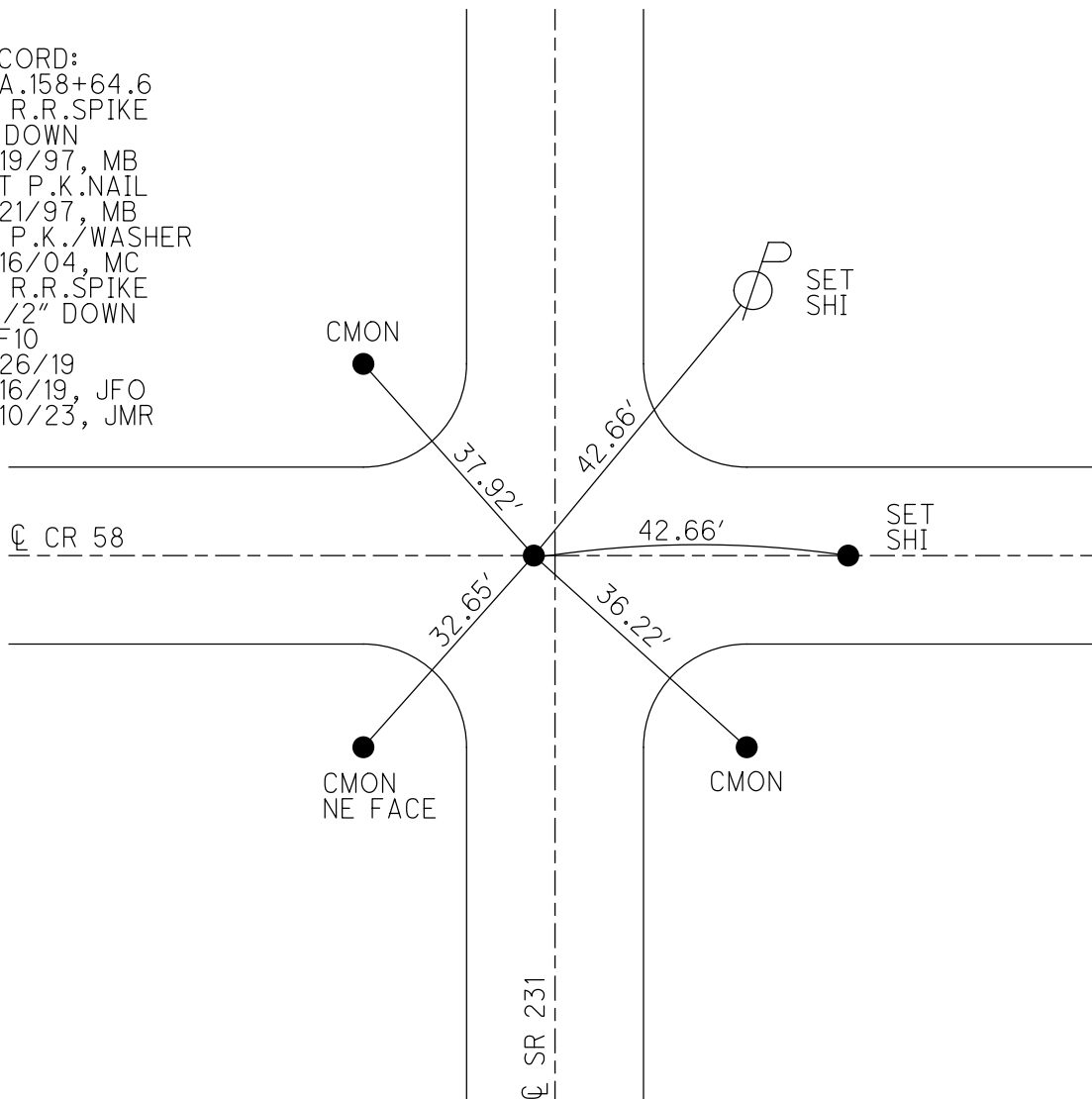
GEOID: 2012A

GRID: NORTHING: 499839.300

EASTING: 1783614.656



RECORD:
 STA.158+64.6
 FD R.R.SPIKE
 4" DOWN
 6/19/97, MB
 SET P.K.NAIL
 8/21/97, MB
 FD P.K./WASHER
 8/16/04, MC
 FD R.R.SPIKE
 4 1/2" DOWN
 REF10
 3/26/19
 8/16/19, JFO
 2/10/23, JMR



O.D.O.T. DISTRICT 2 SURVEY OFFICE

PERSONNEL

REFERENCE NO. 10

SHEET 11 OF 27

NOTES Barchisai

H.C. Carterbury

R.C. Rovos

P Weaver

Drawn By Rovos

DATE 6-19-97

WEATHER SUNNY

TEMP. 77.0

ROUTE SR 231

COUNTY SENECA

TOWNSHIP EDEN

SECTION 18, 17, 19, 20

T1 NLR 15 E

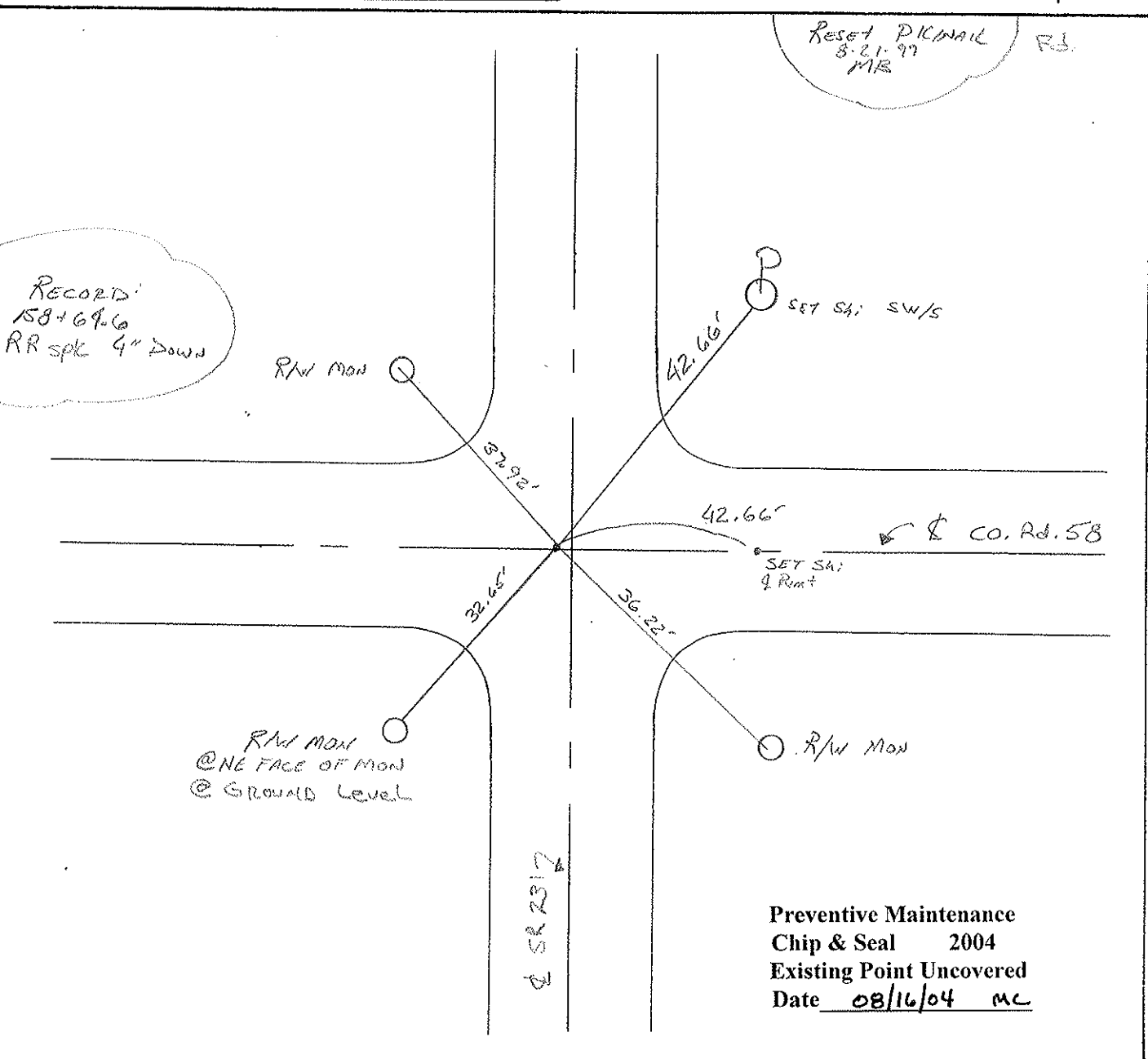
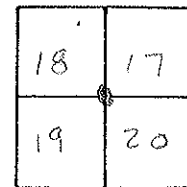
TYPE MONUMENT RR 1" SPIC

ON SURFACE - BELOW 4" Down

LEFT - C PAVT. - RIGHT 1.4' LT

8.0 TO L* EDGE PAVEMENT

S.L.M. 4+898.5M 159+07



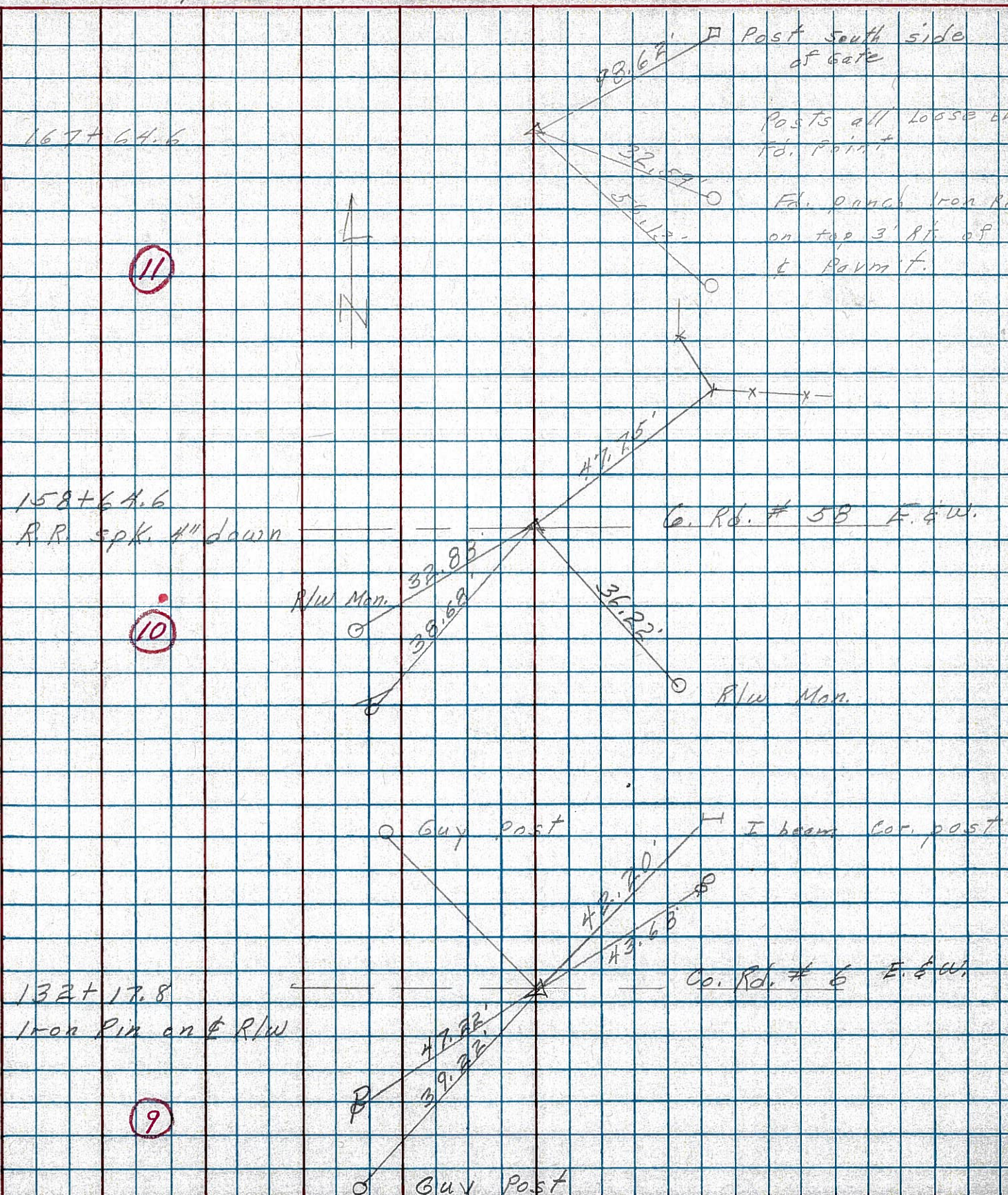
PERSONNEL TITLE PERSONNEL TITLE

COUNTY Seneca DATE 3-5-75

S. R. 231 WEATHER

SEC. B TEMP. 40°

DESCRIPTION Wyandot Co. Line to U.S. 224 JOB NO.



PERSONNEL TITLE PERSONNEL TITLE

Schneider
Mosser
Potts

COUNTY Seneca

DATE 10-29-69

S. R. 231

WEATHER Fair

SEC. B

TEMP. 40'

DESCRIPTION Wyandot Co. Line to Tiffin

JOB NO.

LEFT

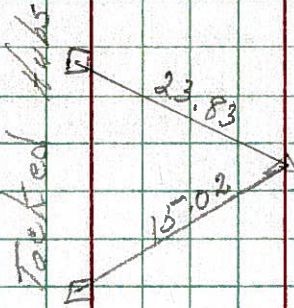
CENTER LINE

RIGHT

11

167+64.6
did not find

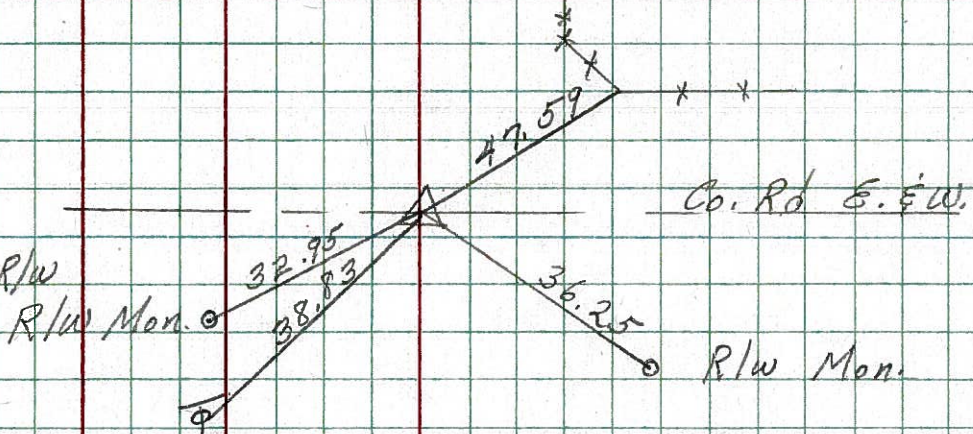
8671



10

158+64.6
P.K. Nail on E R/W
2" down

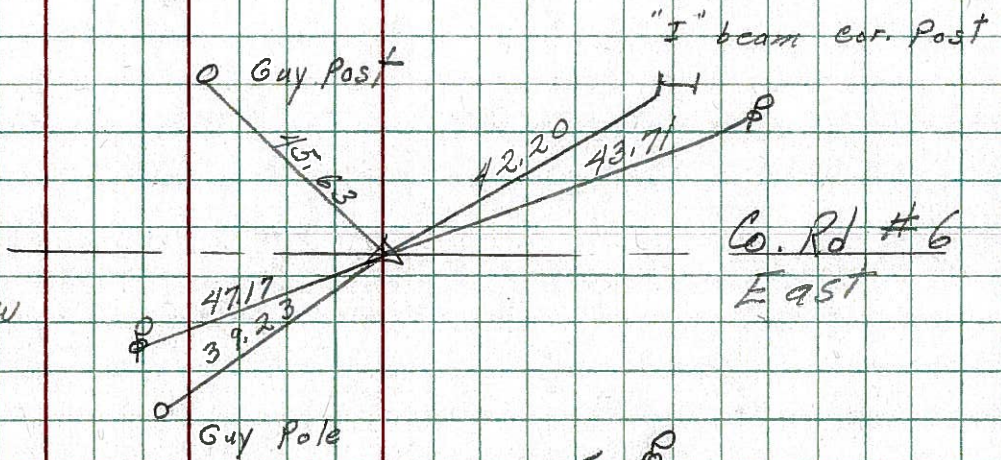
8670



9

132+17.8
Iron Pin on E R/W

8669



8

105+70.7
R.R. Spk on E R/W
1" down

8668

