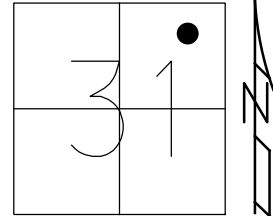


O.D.O.T. DISTRICT 2 SURVEY OFFICE (USE ONLY)

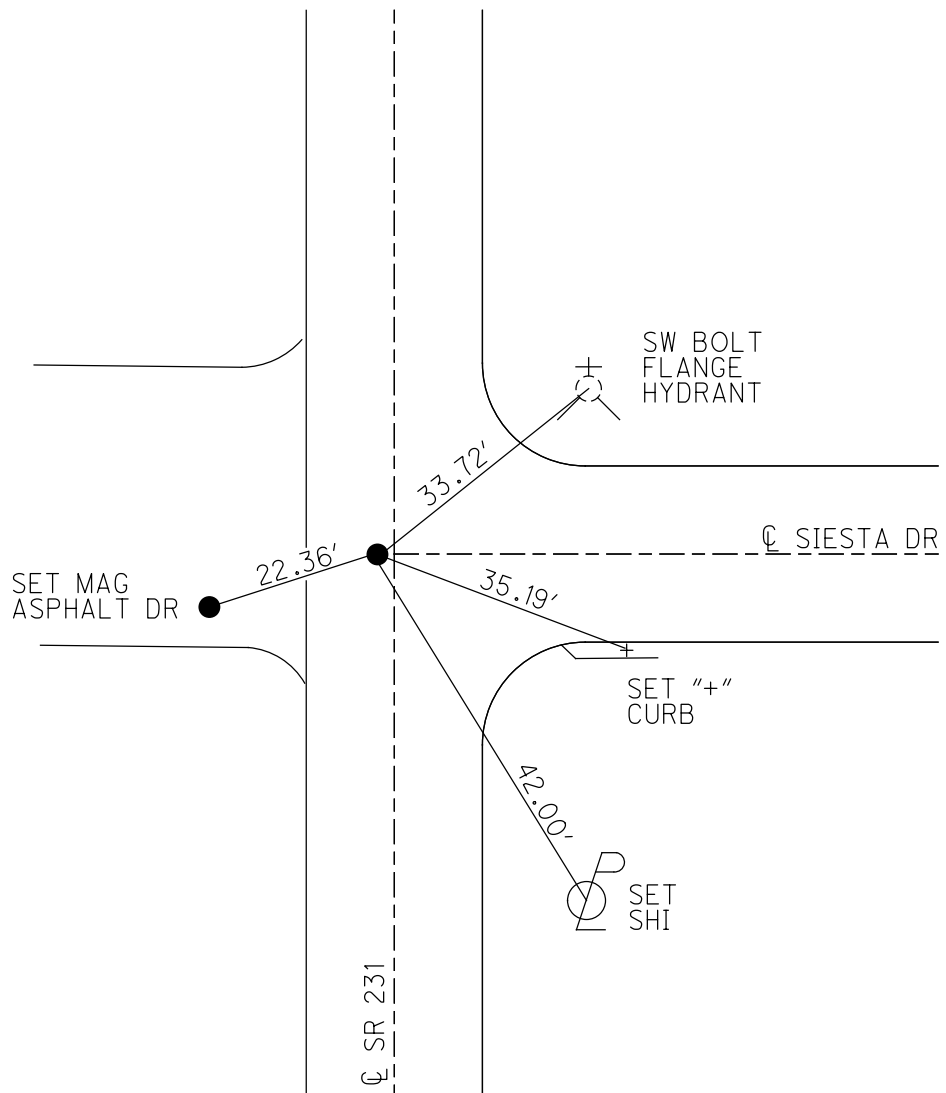
PERSONNEL _____ REFERENCE NO. 26 SHEET 31 OF 34
 NOTES RHOADES DATE 11/2/23 ROUTE SR 231
 H.C. AUBLE WEATHER CLOUDY COUNTY SENECA
 R.C. MILLER TEMP. 39° TOWNSHIP CLINTON
 DWG BY RHOADES PID 95780 SECTION 31
 T 2 N R 15 E

TYPE MONUMENT MAG/WASHER
 ON SURFACE - ~~BELOW~~ ON
 OFFSET C PAVEMENT 0.5 LT : ~~RT~~
9.2' TO LT EDGE PAVEMENT
 STATION: 365+32



HORZ.DATUM: NAD83(2011) GEOID: NAVD88 2018
 GRID: NORTHING: 520231.356 EASTING: 1782506.005

RECORD:
 FD HINGE NAIL
 5" DOWN
 SET MAG/WASHER
 6/22/04, MC
 FD MAG NAIL
 REF26
 4/25/19
 8/16/19, JFO
 7/2/21, DSA
 FD MAG NAIL
 REF26
 4/20/23, TDN
 SET MAG/WASHER
 11/2/23, DSA



O.D.O.T. DISTRICT 2 SURVEY OFFICE (USE ONLY)

PERSONNEL

REFERENCE NO. 26

SHEET 30 OF 33

NOTES BARNHISEL

DATE 6/22/04

ROUTE SR 231

H.C. CANTERBURY

WEATHER SUN

COUNTY SENECA

R.C. ADKINS

TEMP. 75°

TOWNSHIP CLINTON

SECTION 31

DWG BY NIESE PID PT-SEN19

T 2 N R 15 E

TYPE MONUMENT HINGE NAIL

~~ON SURFACE~~ - BELOW 5"

OFFSET \odot PAVEMENT 1.0' LT : ~~RT~~

9.2' TO LT EDGE PAVEMENT

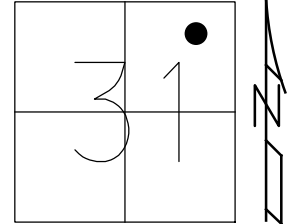
STATION: 365+32

HORZ.DATUM: NAD83(2011)

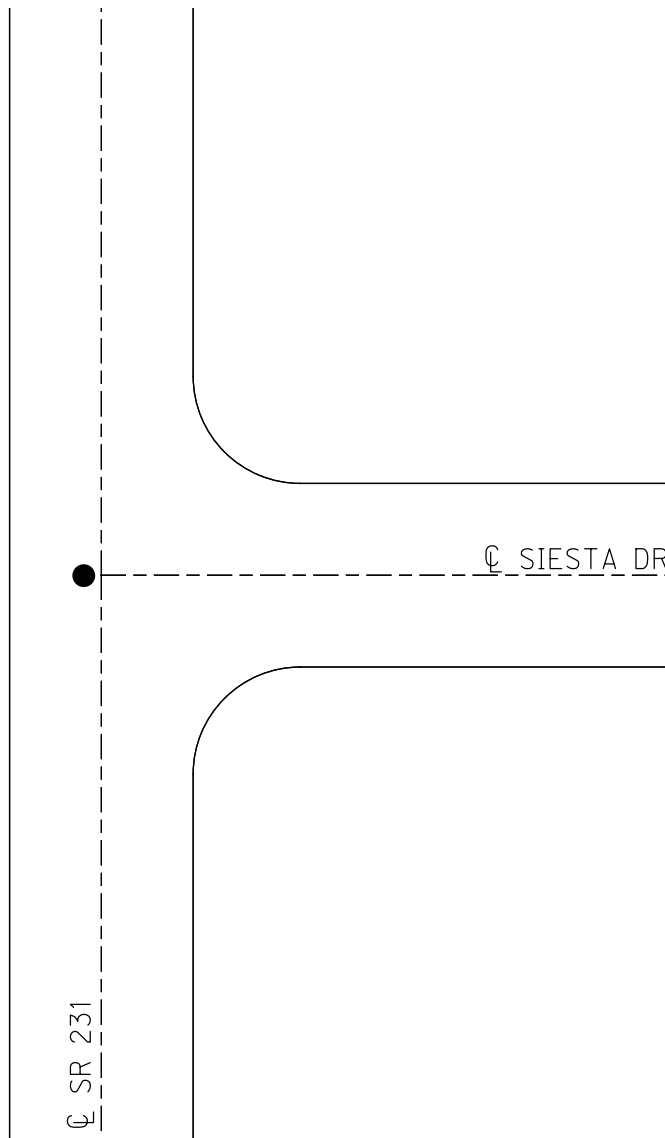
GEOID: 2012A

GRID: NORTHING: 520231.356

EASTING: 1782506.005



RECORD:
FD HINGE NAIL
5" DOWN
SET MAG/WASHER
6/22/04, MC
FD MAG NAIL
REF26
4/25/19
8/16/19, JFO



\odot SR 231

\odot SIESTA DR

O.D.O.T. DISTRICT 2 SURVEY OFFICE

PERSONNEL _____

REFERENCE NO. _____

SHEET _____ OF _____

NOTES BARNHISEL

H.C. CANTERBURY

R.C. ADKINS

DATE 6-22-04

WEATHER SUN

TEMP. +75°

ROUTE S.R. 231

COUNTY SENECA

TOWNSHIP CLINTON

SECTION 31

T. 2 N. R. 15 E.

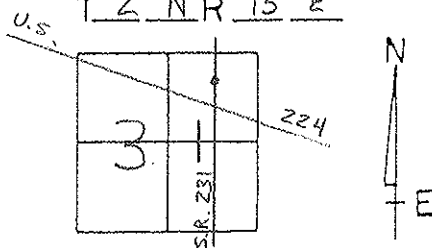
TYPE MONUMENT Ed. HING NAIL

ON SURFACE - BELOW 5" DOWN

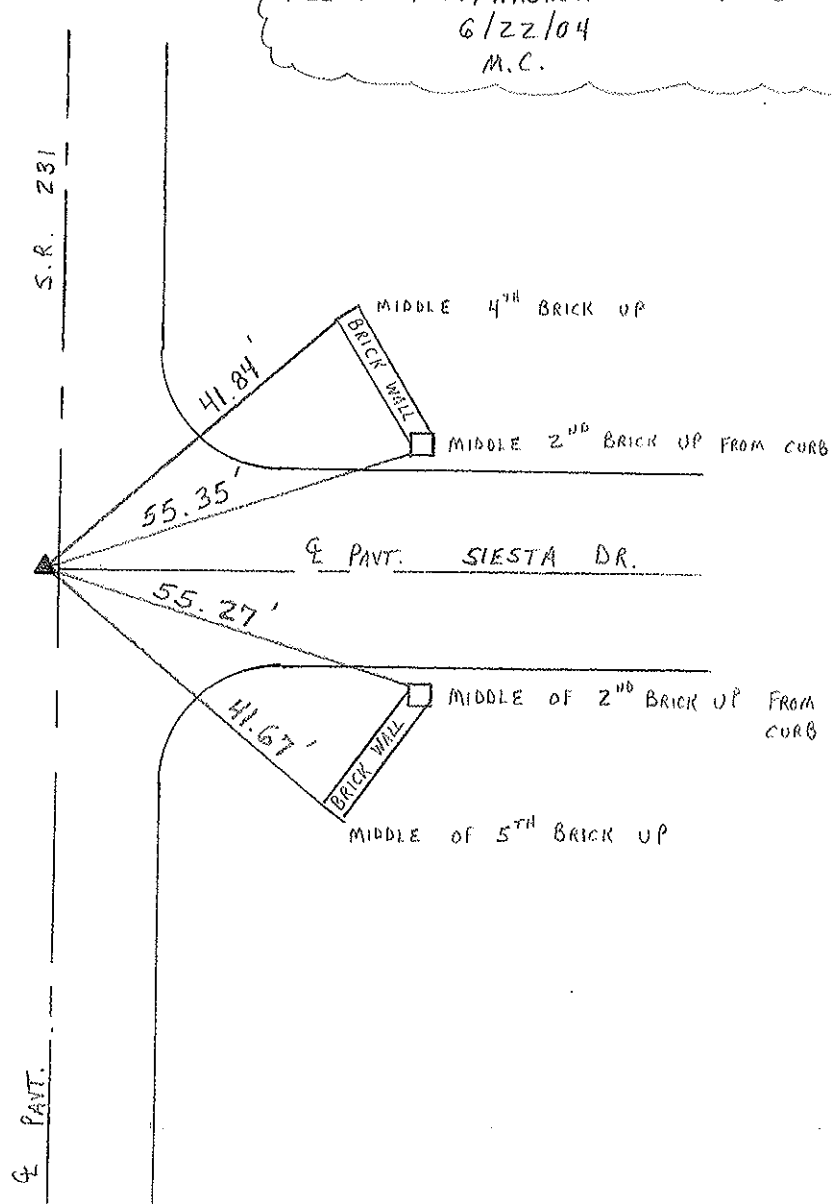
LEFT - Q PAVT. - RIGHT 1' LT Q

9.2' TO LT. EDGE PAVEMENT

S.L.M. 365 + 32



RESET MAG/WASHER TO SURFACE
6/22/04
M.C.



PERSONNEL TITLE PERSONNEL TITLE

Schneider
Massef
Barbour
Potts

Geyman

COUNTY Seneca

DATE 7-17-69

S. R. 231

WEATHER Fair

SEC. 6.47-7.26

TEMP. 80°

DESCRIPTION

Ties for Control Points

JOB NO.

TIFFIN GARAGE

37357081

LEFT

CENTER LINE

RIGHT

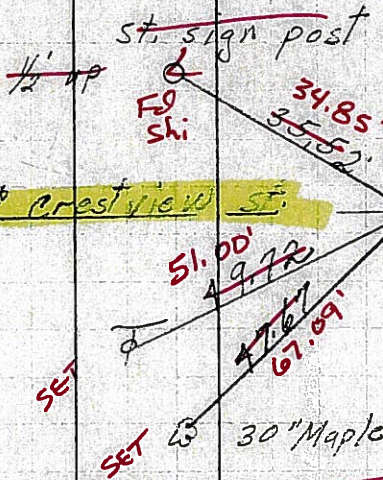
FD PK NAIL @ SURFACE

1.4' LT E
11.2' RT E

368+92

368+32
Hing Nail
on surface

8687



Chipped out
8/17/04
MB

MIDDLE OF 4th BK UP
Top 3rd brick.

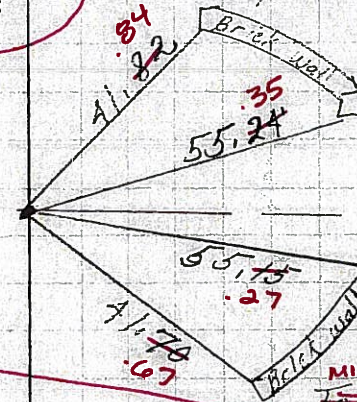
SET MAG & washer TO SURFACE
6/22/04
Chipped out 8/17/04

365+30

364+70
Hing Nail
on surface

8686

1' LT E
9.2' LT Edge



Top 1st Brick SAME

street

MIDDLE OF 2nd BK UP FROM CURB

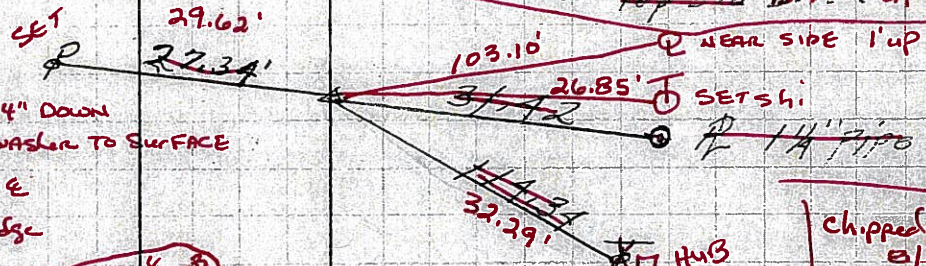
MIDDLE OF 5th BK UP
Top 2nd Brick up

360+94

360+37
PK Nail
on surface

8685

FD NAIL 4" DOWN
SET MAG | washer TO SURFACE
0.5' RT E
10.1' RT Edge



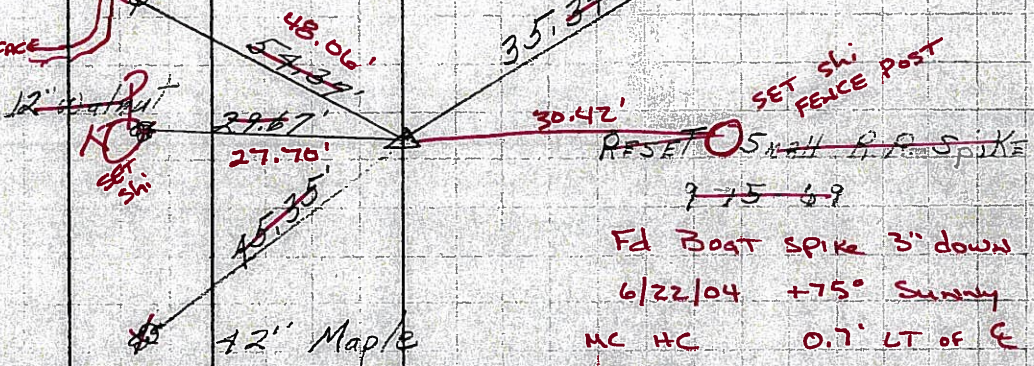
Chipped out
8/17/04
MB

SET MAG | washer TO SURFACE
on 6/22/04

347+54

346+95
R.R. spk.
2" below surface

8684



FD Post spike 3" down
6/22/04 +75° Sunny
MC HC 0.7' LT OF E
KA RC 9.1' LT Edge
MB III

Chipped out
8/17/04
MB

PERSONNEL TITLE PERSONNEL TITLE

Schneider
Mosser
Barbour
Potts

Geyman

COUNTY Seneca DATE 4-17-69

S. R. 231 WEATHER Fair

SEC. 6.47-7.26 TEMP. 80°

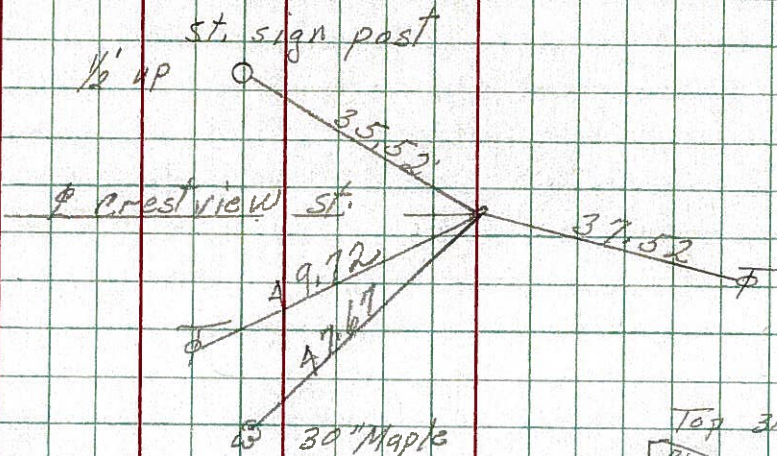
DESCRIPTION Ties for Control Points

LEFT CENTER LINE RIGHT JOB NO.

27

368+32
Hing Nail
on surface

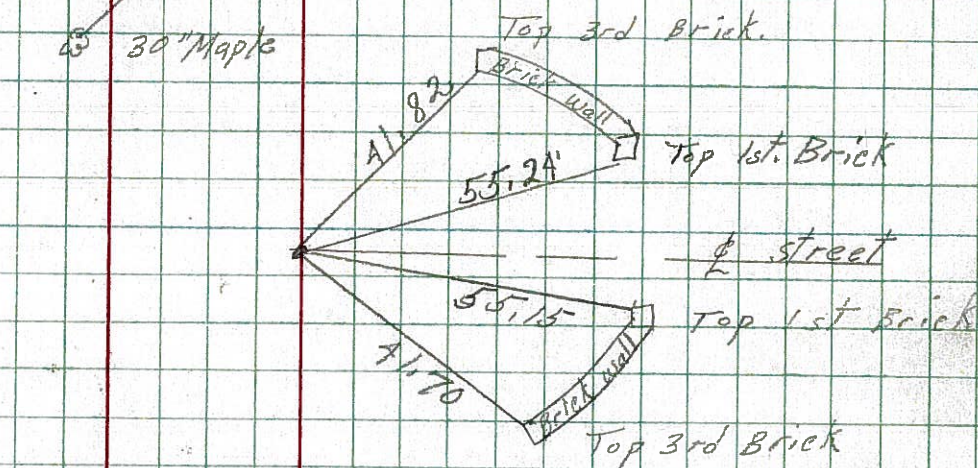
8687



26

364+70
Hing Nail
on surface

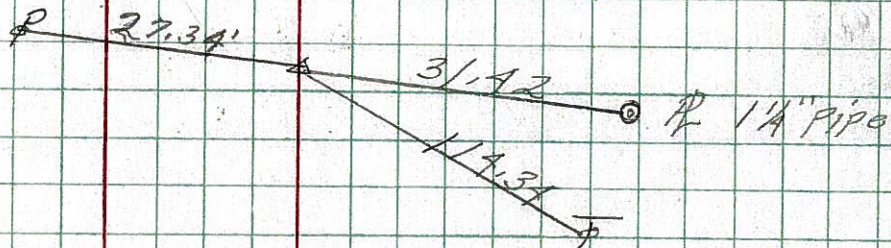
8686



25

360+37
P.K. Nail
on surface

8685



24

346+95
R.R. spike
2\"/>

8684

