

O.D.O.T. DISTRICT 2 SURVEY OFFICE (USE ONLY)

PERSONNEL

REFERENCE NO. 28

SHEET 33 OF 34

NOTES BARNHISEL DATE 6/22/04  
H.C. CANTERBURY WEATHER SUN  
R.C. ADKINS TEMP. 75°

ROUTE SR 231  
COUNTY SENECA  
TOWNSHIP CLINTON  
SECTION 31  
T 2 N R 15 E

DWG BY NIESE PID -

TYPE MONUMENT P.K. NAIL

ON SURFACE - BELOW --

OFFSET C PAVEMENT -- LT : RT

-- TO -- EDGE PAVEMENT

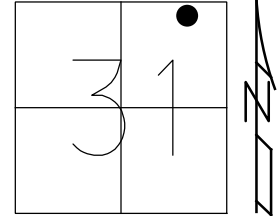
STATION: 371+19

HORZ.DATUM: --

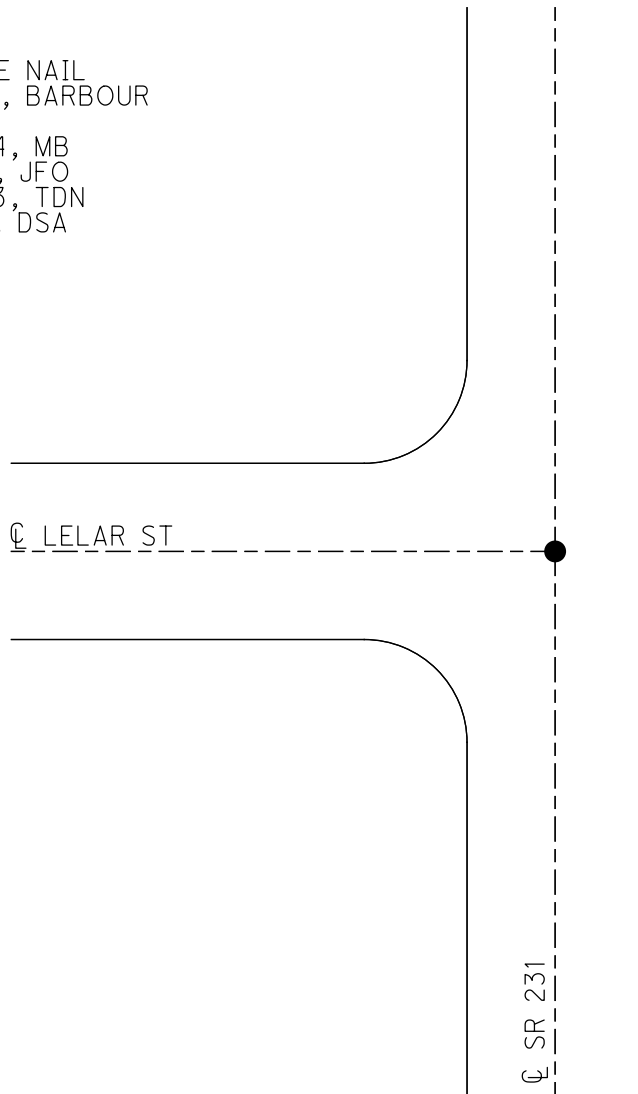
GEOID: --

GRID: NORTHING: --

EASTING: --



RECORD:  
FD HINGE NAIL  
4/17/69, BARBOUR  
D.N.F  
6/22/04, MB  
4-25-19, JFO  
4/20/23, TDN  
11/2/23, DSA



O.D.O.T. DISTRICT 2 SURVEY OFFICE (USE ONLY)

PERSONNEL \_\_\_\_\_

REFERENCE NO. 28

SHEET 32 OF 33

NOTES BARNHEISEL

DATE 6/22/04

ROUTE SR 231

H.C. CANTERBURY

WEATHER SUN

COUNTY SENECA

R.C. ADKINS

TEMP. 75°

TOWNSHIP CLINTON

DWG BY NIESE PID -

SECTION 31

T 2 N R 15 E

TYPE MONUMENT P.K. NAIL

ON SURFACE - BELOW --

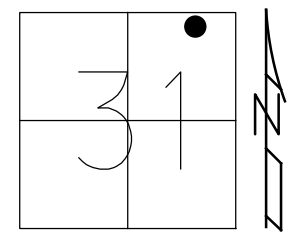
OFFSET  $\varnothing$  PAVEMENT -- LT : RT

-- TO -- EDGE PAVEMENT

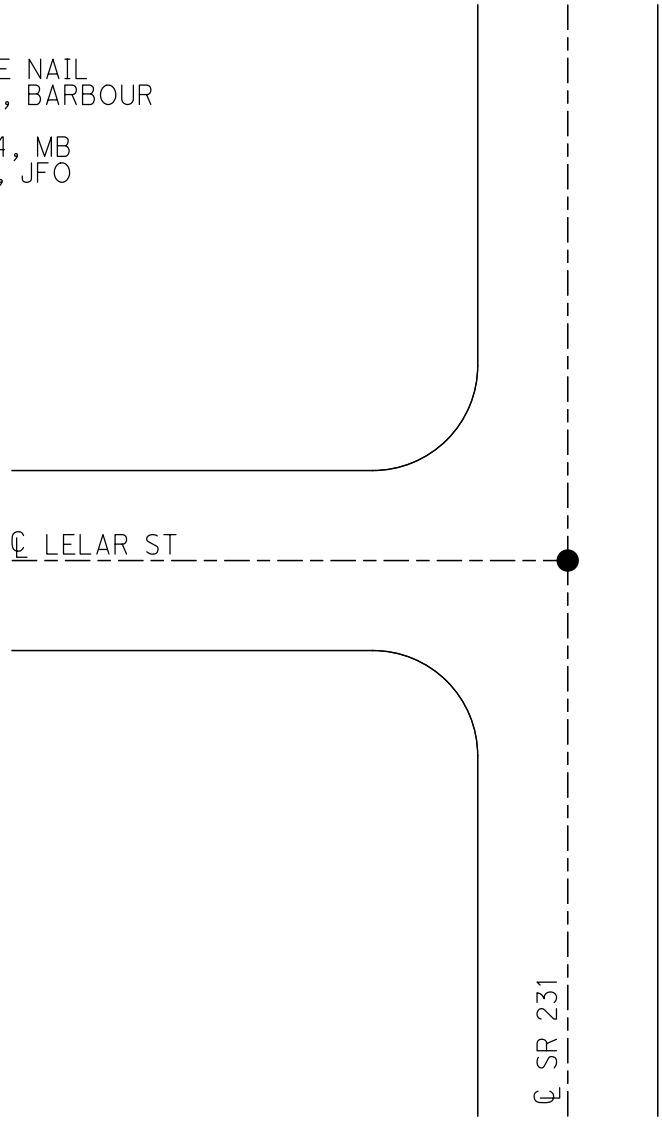
STATION: 371+19

HORIZ.DATUM: -- GEOID: --

GRID: NORTHING: -- EASTING: --



RECORD:  
FD HINGE NAIL  
4/17/69, BARBOUR  
D.N.F.  
6/22/04, MB  
4-25-19, JFO



O.D.O.T. DISTRICT 2 SURVEY OFFICE

PERSONNEL \_\_\_\_\_

REFERENCE NO. \_\_\_\_\_

SHEET \_\_\_\_\_ OF \_\_\_\_\_

NOTES BARNHISEL

H.C. CANTERBURY

R.C. ADKINS

DATE 6-22-04

WEATHER SUN

TEMP. +75°

ROUTE S.R. 231

COUNTY SENECA

TOWNSHIP CLINTON

SECTION 31

T. 2 N R. 15 E

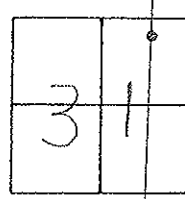
TYPE MONUMENT P.K. NAIL

ON SURFACE - BELOW \_\_\_\_\_

LEFT - ☉ PAV'T. - RIGHT \_\_\_\_\_

\_\_\_\_\_ TO \_\_\_\_\_ EDGE PAVEMENT

S.L.M. \_\_\_\_\_



DID NOT FIND

S.R. 231

54.49' (REC)

MAPLE

☉ PAVT. LELAR ST.

☉ PAVT.

OLD # 8688

PERSONNEL TITLE PERSONNEL TITLE  
 Schneider Geyman  
 Mosser  
 Barbour  
 Potts

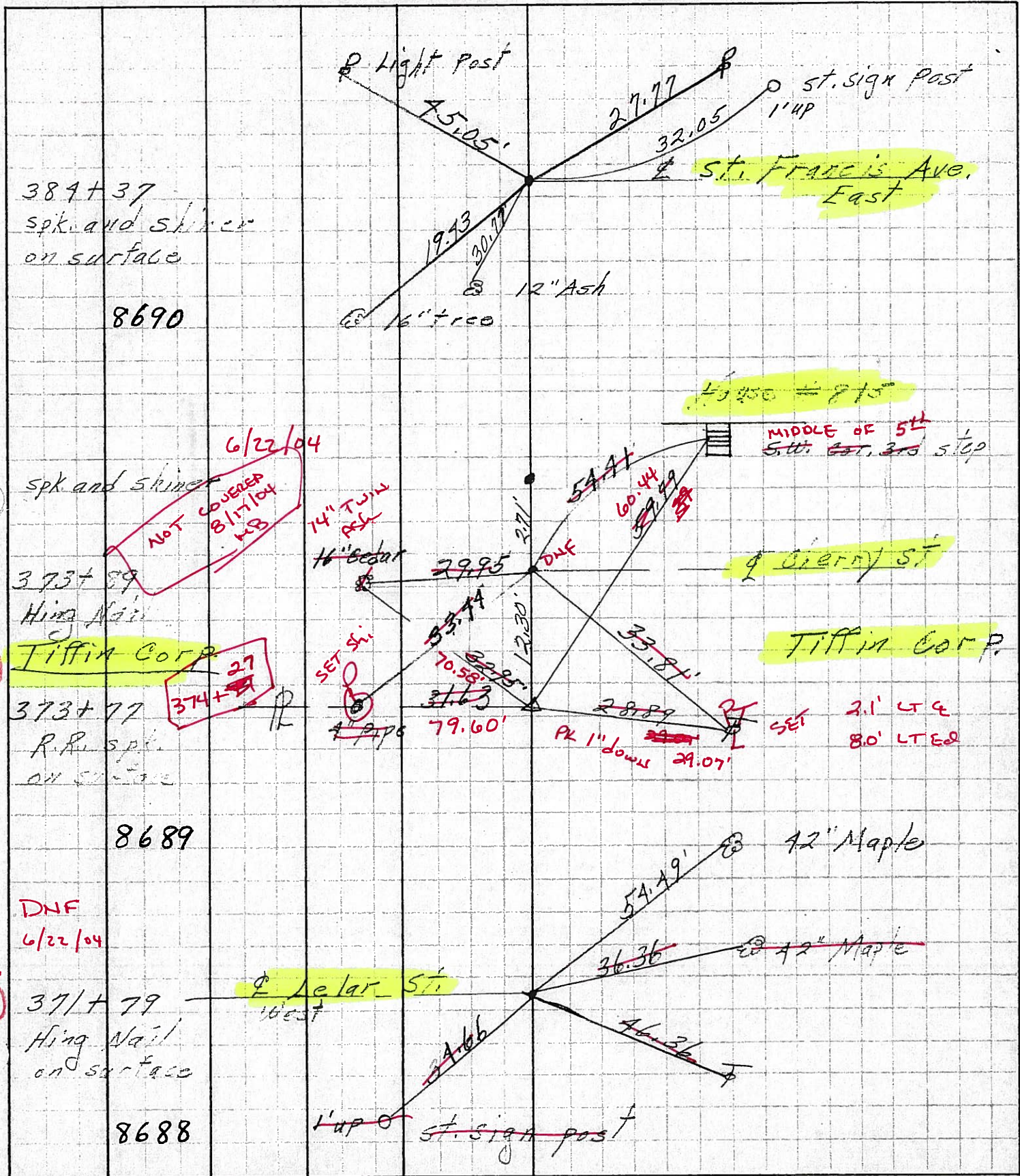
COUNTY Seneca DATE 4-17-69

S. R. 231 WEATHER Fair

SEC. 6.97-7.26 TEMP. 80°

DESCRIPTION Ties for Control Points

JOB NO.



389+37  
spk and skiner  
on surface

8690

spk and skiner

NOT COVERED  
817104  
W.B.

6/22/04

373+89  
Hing Nail

Tiffin Corp

29

27  
374+27

373+77  
R.R. spl.  
on surface

8689

DNF  
6/22/04

371+79  
Hing Nail  
on surface

28

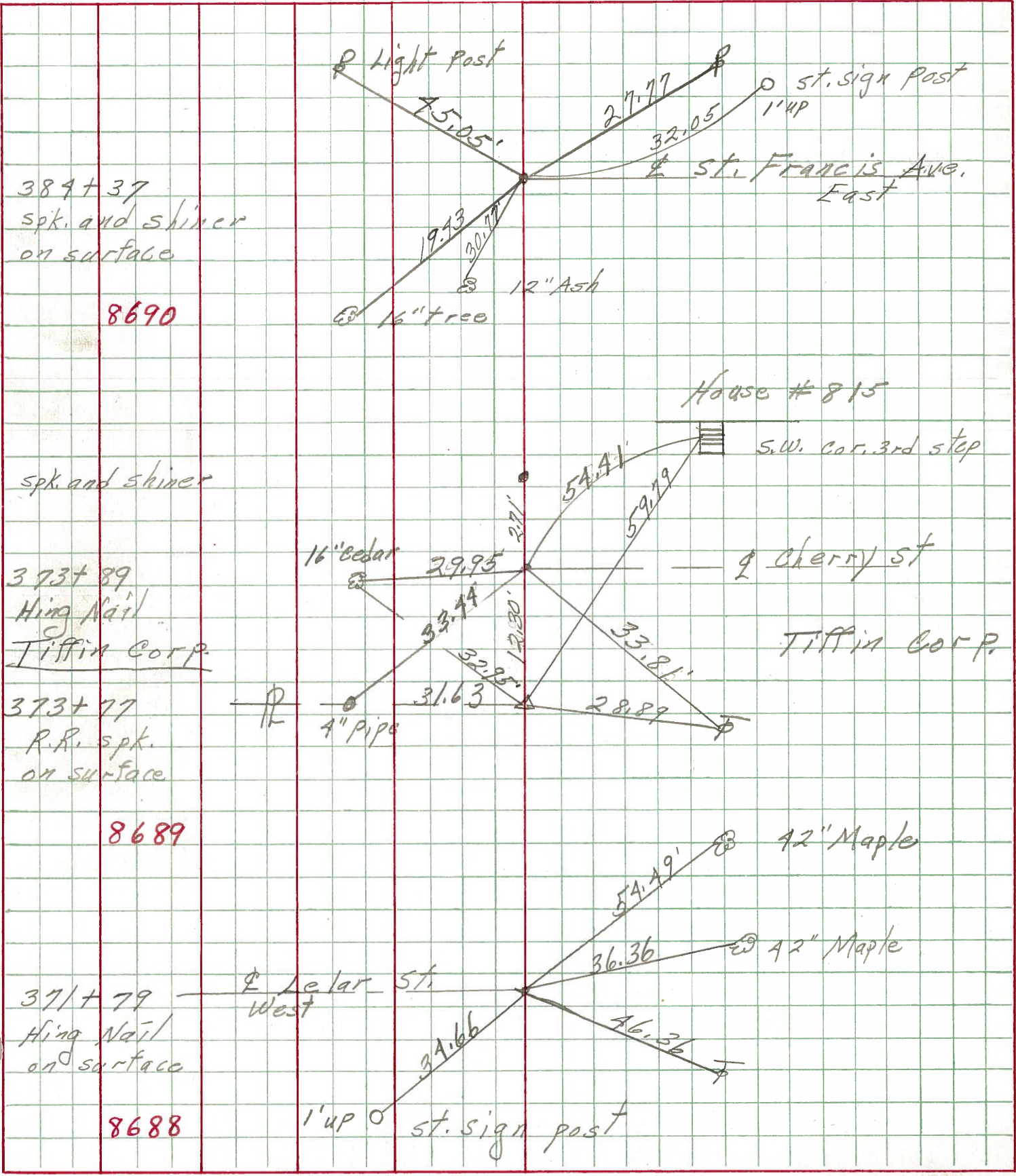
8688

1" up St. Sign Post



PERSONNEL	TITLE	PERSONNEL	TITLE	COUNTY	Seneca	DATE	4-17-69
Schneider		Geyman		S. R.	231	WEATHER	Fair
Mosser				SEC.	6.97-7.26	TEMP.	80°
Barbour							
Potts							

DESCRIPTION: Ties for Control Points      JOB NO. \_\_\_\_\_



389+37  
spk. and shiner  
on surface

8690

spk. and shiner

373+89  
Hing Nail  
Tiffin Corp.

29

373+77  
R.R. spk.  
on surface

8689

371+79  
Hing Nail  
on surface

28

8688