

O.D.O.T. DISTRICT 2 SURVEY OFFICE (USE ONLY)

PERSONNEL

REFERENCE NO. 1

SHEET 1 OF 6

NOTES CHENEY

DATE 7/28/93

ROUTE SR 269

H.C. RIPPLE

WEATHER FAIR

COUNTY SENECA

R.C. BARBOUR

TEMP. 85°

TOWNSHIP THOMPSON

GEYMAN

SECTION 31

DWG BY NASON

PID 107060

T 3 N R 18 E

TYPE MONUMENT R.R. SPIKE

~~ON SURFACE~~ - BELOW 3"

OFFSET ϕ PAVEMENT ON LT : RT

11.5' TO RT EDGE PAVEMENT

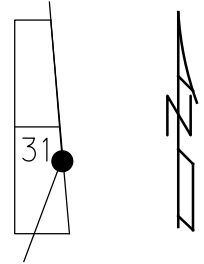
STATION: 0+00

HORZ.DATUM: NAD83 (2011)

GEOID: 2012A

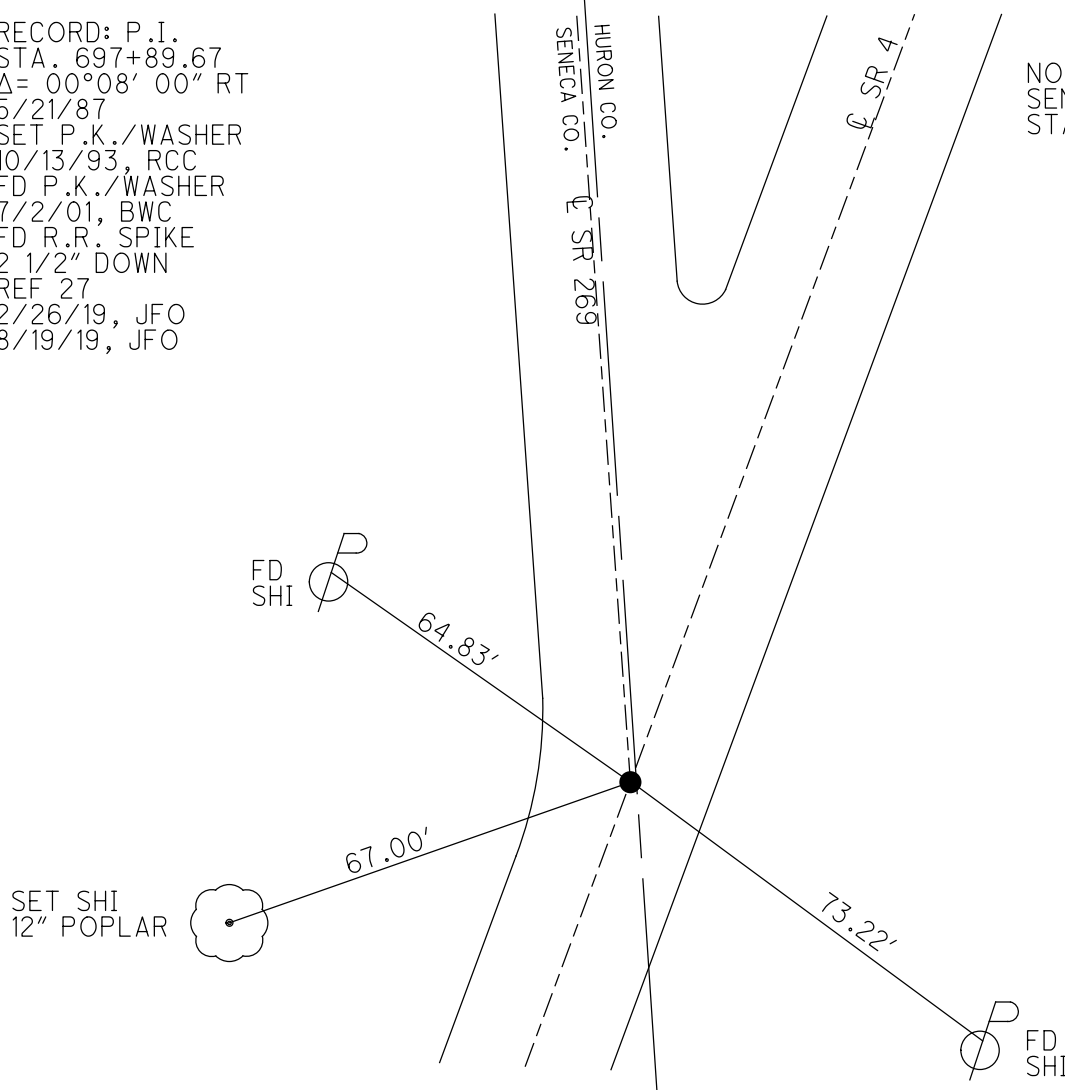
GRID: NORTHING: 549323.697

EASTING: 1875809.893



RECORD: P.I.
 STA. 697+89.67
 $\Delta = 00^{\circ}08' 00''$ RT
 5/21/87
 SET P.K./WASHER
 10/13/93, RCC
 FD P.K./WASHER
 7/2/01, BWC
 FD R.R. SPIKE
 2 1/2" DOWN
 REF 27
 2/26/19, JFO
 8/19/19, JFO

NOTE:
 SEN SR 4 REF 27
 STA. 700+55



O.D.O.T. DISTRICT 2 SURVEY OFFICE (USE ONLY)

PERSONNEL

REFERENCE NO. 27

SHEET 15 OF 15

NOTES CHENEY

DATE 7/28/93

ROUTE SR 4

H.C. RIPPLE

WEATHER FAIR

COUNTY SENECA

R.C. BARBOUR

TEMP. 85°

TOWNSHIP THOMPSON

GEYMAN

SECTION 31

DWG BY NASON

PID 107060

T 3 N R 18 E

TYPE MONUMENT R.R. SPIKE

~~ON SURFACE~~ - BELOW 3"

OFFSET \varnothing PAVEMENT ON LT : RT

11.5' TO RT EDGE PAVEMENT

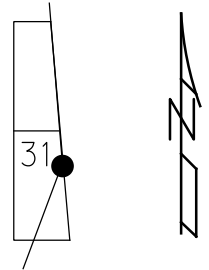
STATION: 700+55

HORZ. DATUM: NAD83 (2011)

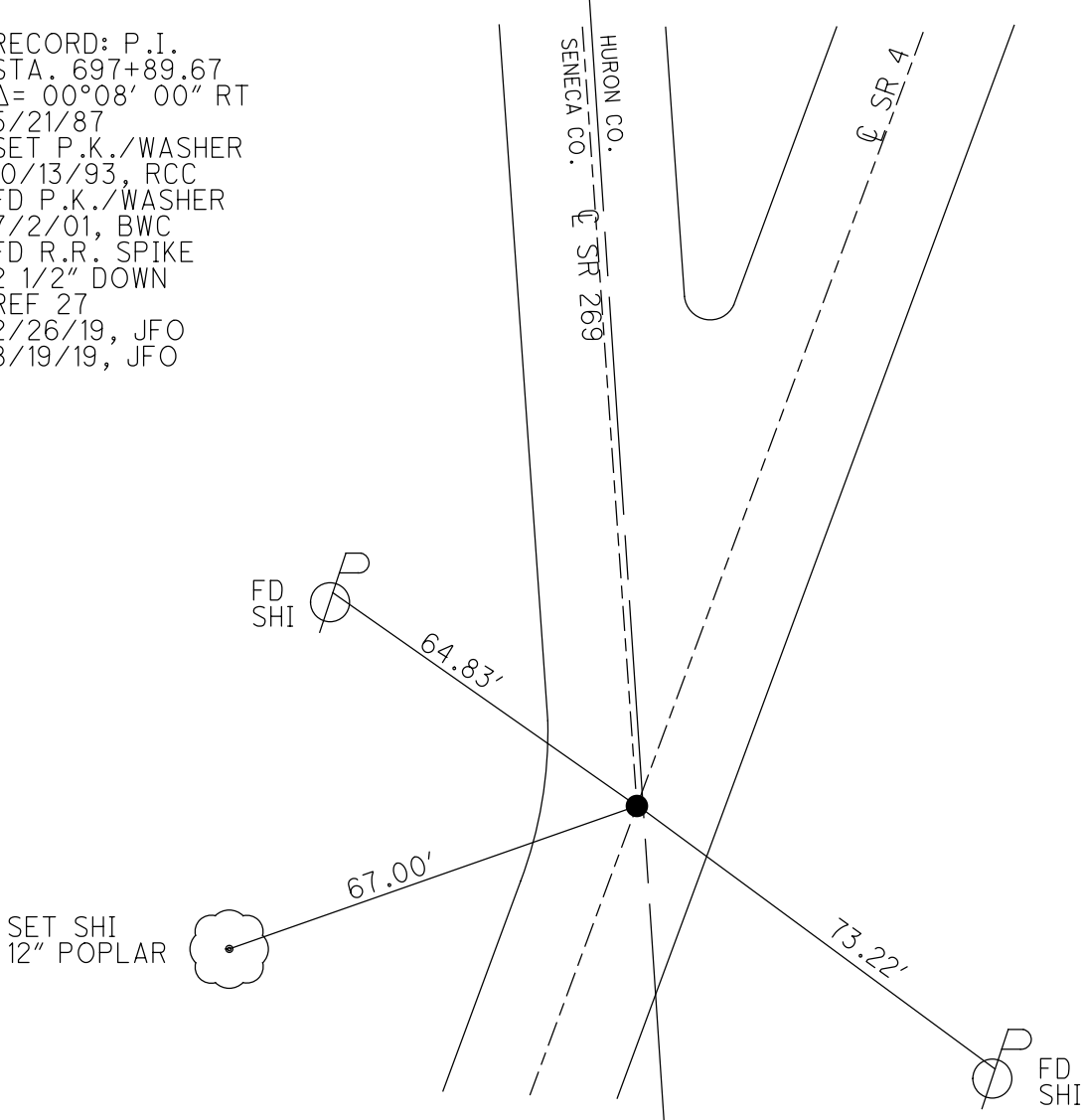
GEOID: 2012A

GRID: NORTHING: 549323.697

EASTING: 1875809.893



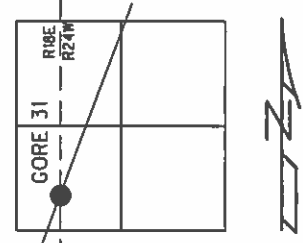
RECORD: P.I.
 STA. 697+89.67
 $\Delta = 00^{\circ}08' 00''$ RT
 5/21/87
 SET P.K./WASHER
 10/13/93, RCC
 FD P.K./WASHER
 7/2/01, BWC
 FD R.R. SPIKE
 2 1/2" DOWN
 REF 27
 2/26/19, JFO
 8/19/19, JFO



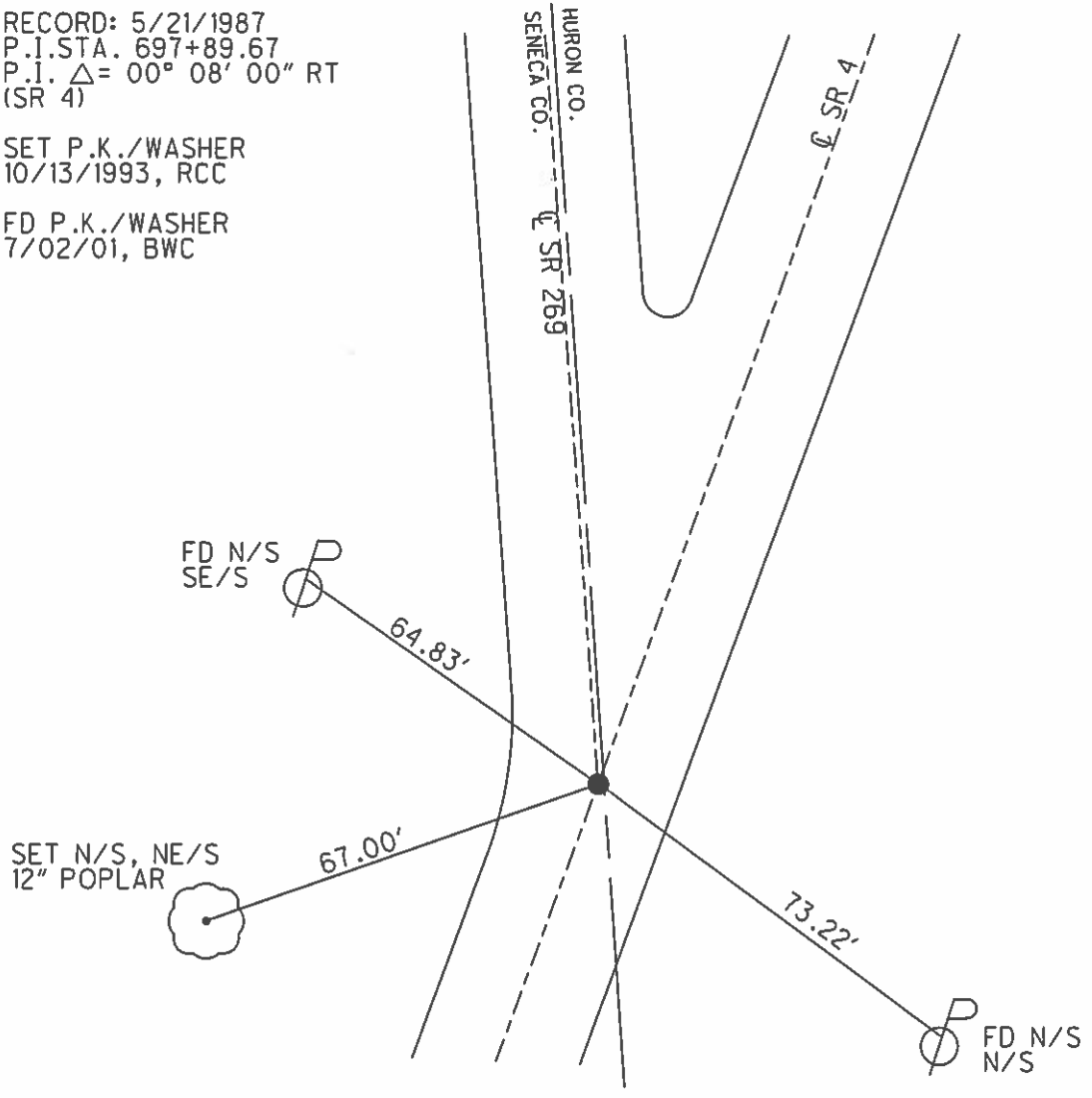
O.D.O.T. DISTRICT 2 SURVEY OFFICE (USE ONLY)

PERSONNEL	REFERENCE NO.	27	SHEET	56	OF	56
NOTES	CHENEY	DATE	7/28/1993	ROUTE	SR 4	
H.C.	RIPPLE	WEATHER	FAIR	COUNTY	SENECA	
R.C.	BARBOUR	TEMP.	85°	TOWNSHIP	THOMPSON	
	GEYMAN			SECTION	31	
				T	2	N
				R	18	E

TYPE MONUMENT R.R.SPIKE
~~ON SURFACE~~ - BELOW 3"
 LEFT - ☉ PAV'T - RIGHT ON
11.5' TO RT EDGE PAVEMENT
 S.L.M. 700+55
 GRID: NORTHING: _____ EASTING: _____



RECORD: 5/21/1987
 P.I. STA. 697+89.67
 P.I. Δ = 00° 08' 00" RT
 (SR 4)
 SET P.K./WASHER
 10/13/1993, RCC
 FD P.K./WASHER
 7/02/01, BWC



O.D.O.T. DISTRICT 2 SURVEY OFFICE

PERSONNEL

REFERENCE NO. 27

SHEET 50 OF 50

NOTES CHENEY

H.C. RIPPLE

DATE 7-28-1993

ROUTE #4

R.C. BARBOUR

WEATHER FAIR

COUNTY SENECA

GEYMAN

TEMP. 85°

TOWNSHIP THOMPSON

SECTION 31

TZ N R 18 E

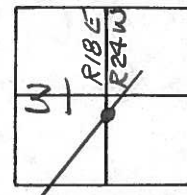
TYPE MONUMENT I.P. SPK.

~~SET~~ SURFACE - BELOW 3"

~~LEFT~~ - E. PAV'T. - ~~RIGHT~~ ON

U.S. TO RT. EDGE PAVEMENT

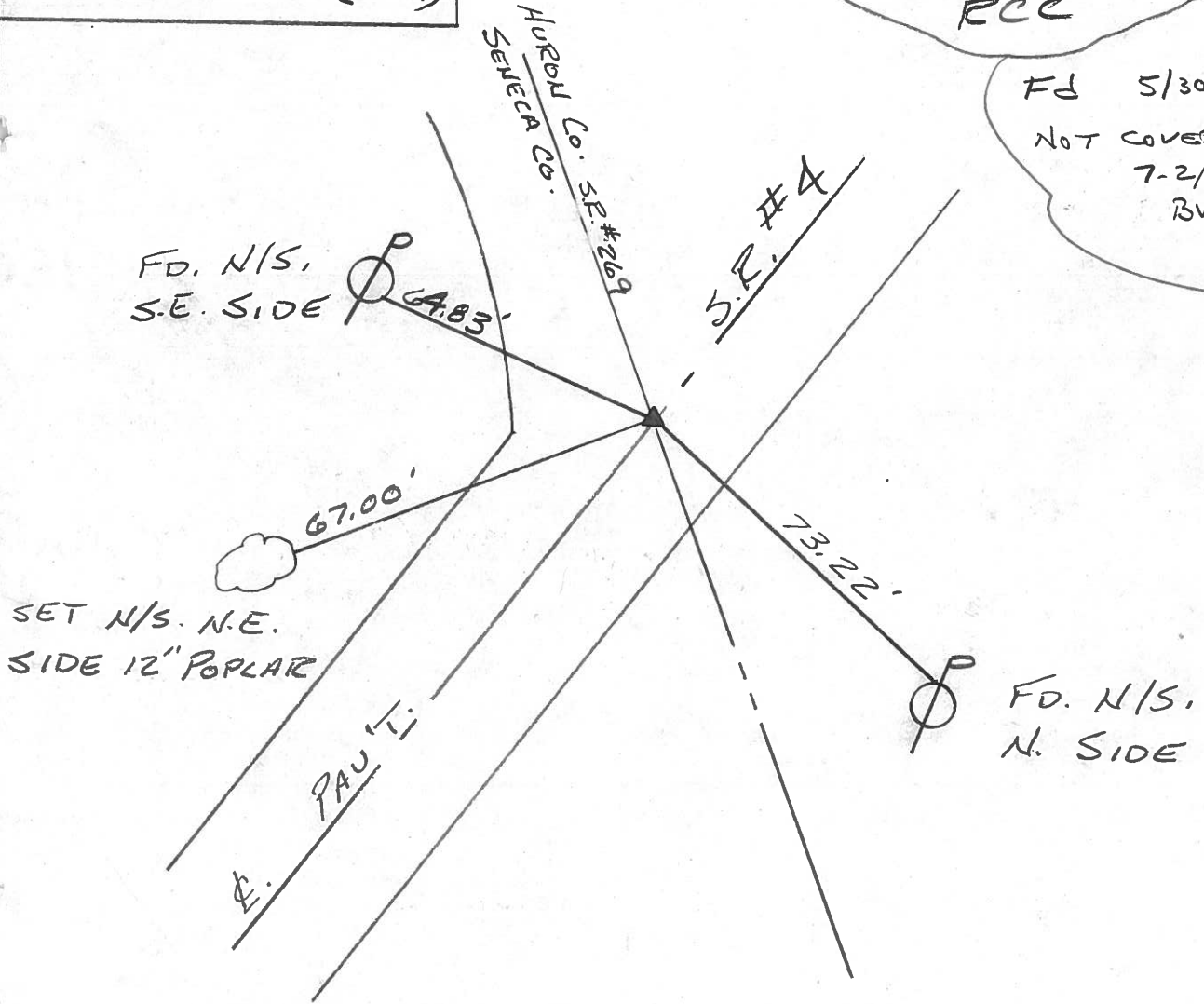
S.L.M. 700 + 55



RECORD: 5-21-1987
 P.I. STA. 697+89.67
 $\Delta = 00^{\circ}08'00''$ Rt (SP#4)

SET PK/WASHER
 10-13-1993
 RCC

FD 5/30/01
 NOT COVERED
 7-2/01
 BWE



O.D.O.T. DISTRICT 2 SURVEY OFFICE

PERSONNEL

NOTES Cronin
 H.C. Ripple
 R.C. Barbour
Geyman

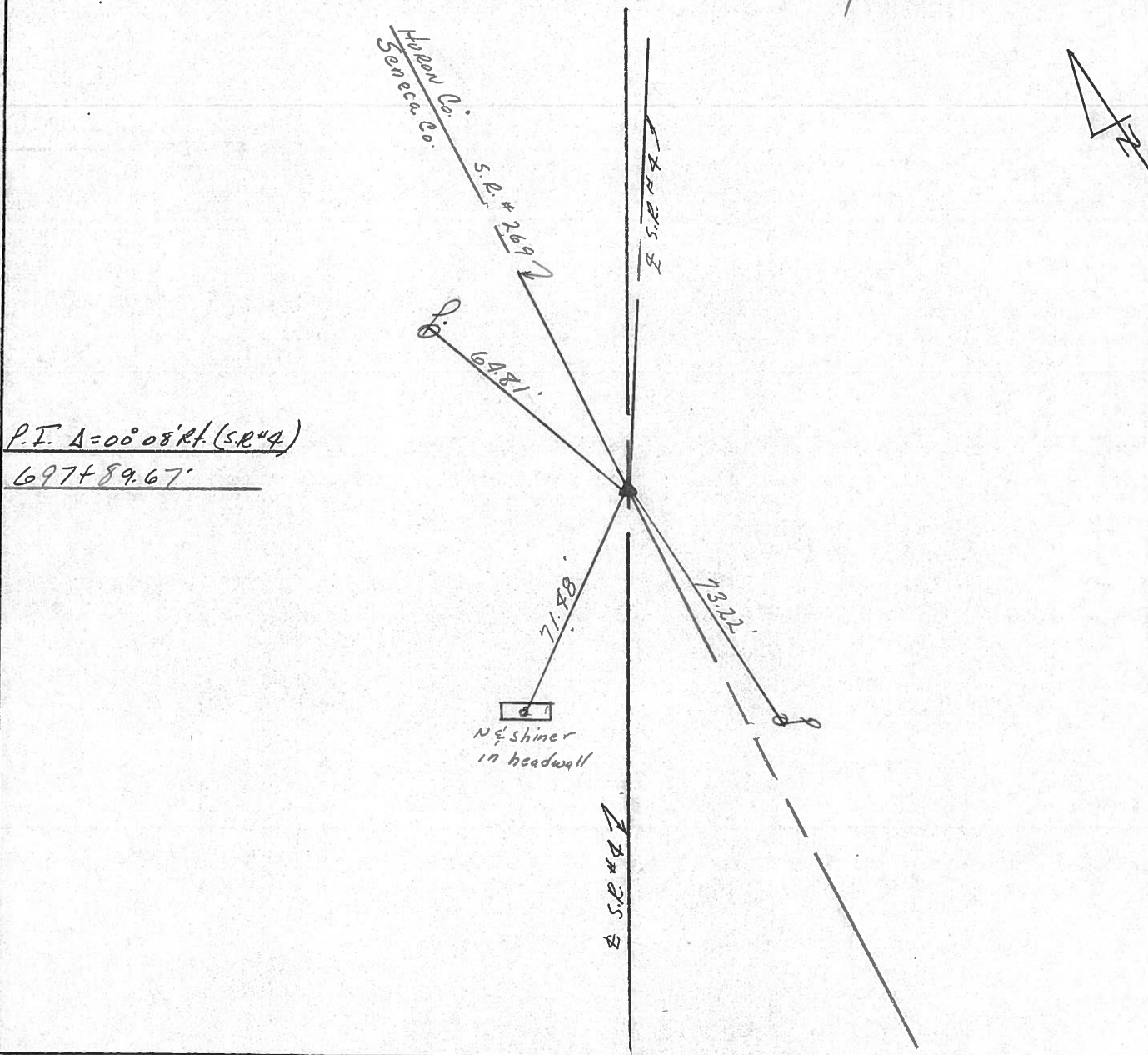
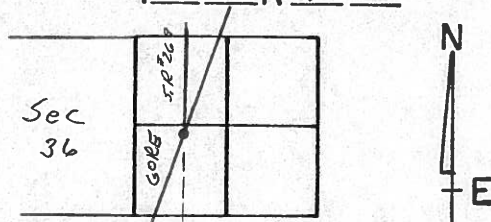
REFERENCE NO. 27

DRAWN 12/11/87
 DATE 5/21/87
 WEATHER overcast
 TEMP. 78°

SHEET 22 OF

ROUTE S.R.#4
 COUNTY Seneca
 TOWNSHIP Thompson
 SECTION GORE
T3 N R17 E

TYPE MONUMENT L.R. spike
 ON SURFACE - BELOW 2" below surface
 LEFT- & PAW'T. - RIGHT & Part.
 TO EDGE PAVEMENT
 S.L.M.



PERSONNEL TITLE PERSONNEL TITLE
 Schneider _____ Potts _____
 Mosser _____
 Barbour _____
 Redding _____

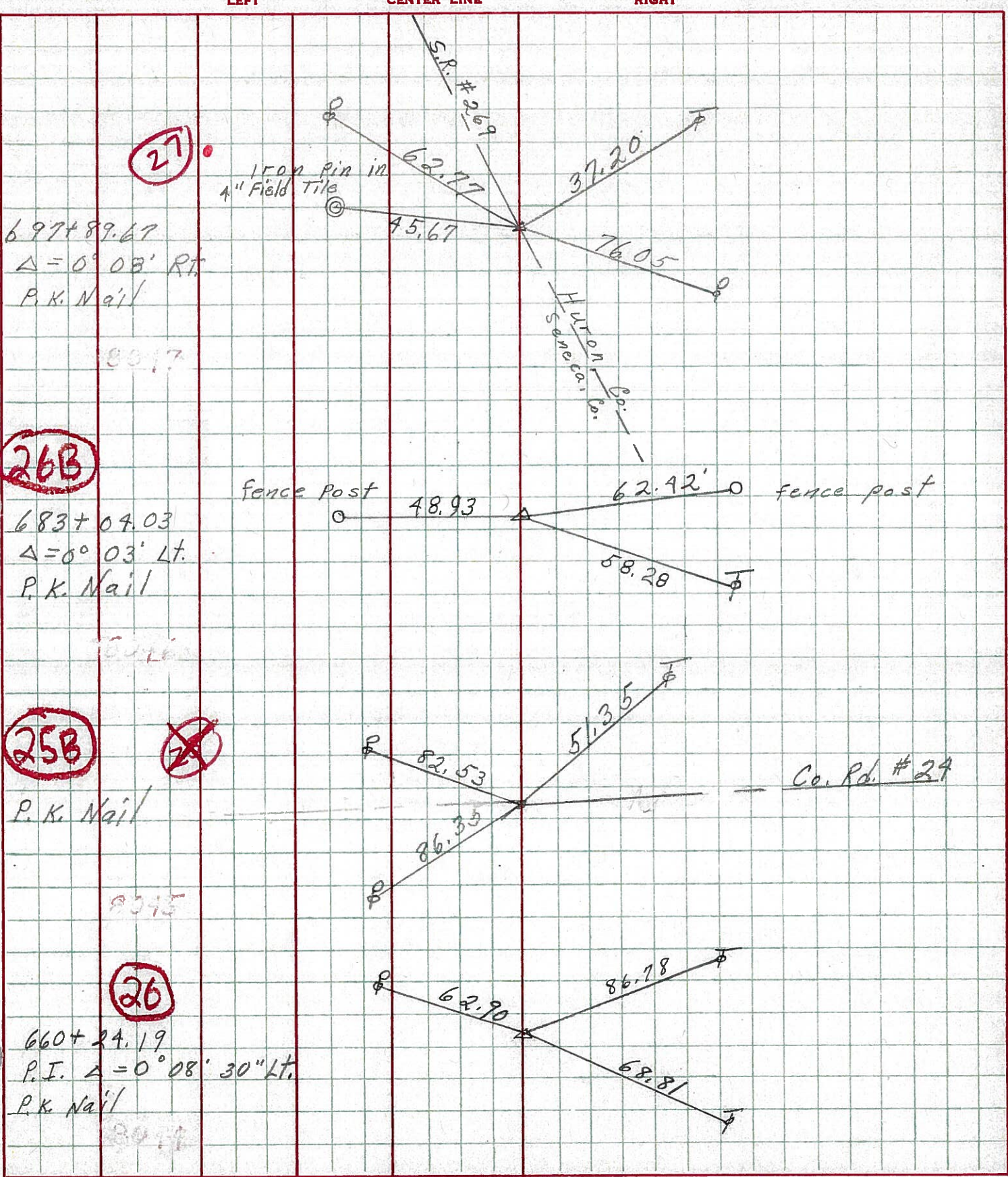
COUNTY Seneca DATE 10-3-68

S. R. 4 WEATHER Cloudy-Windy

SEC. _____ TEMP. 50°

DESCRIPTION Ties for Control Points

JOB NO. _____



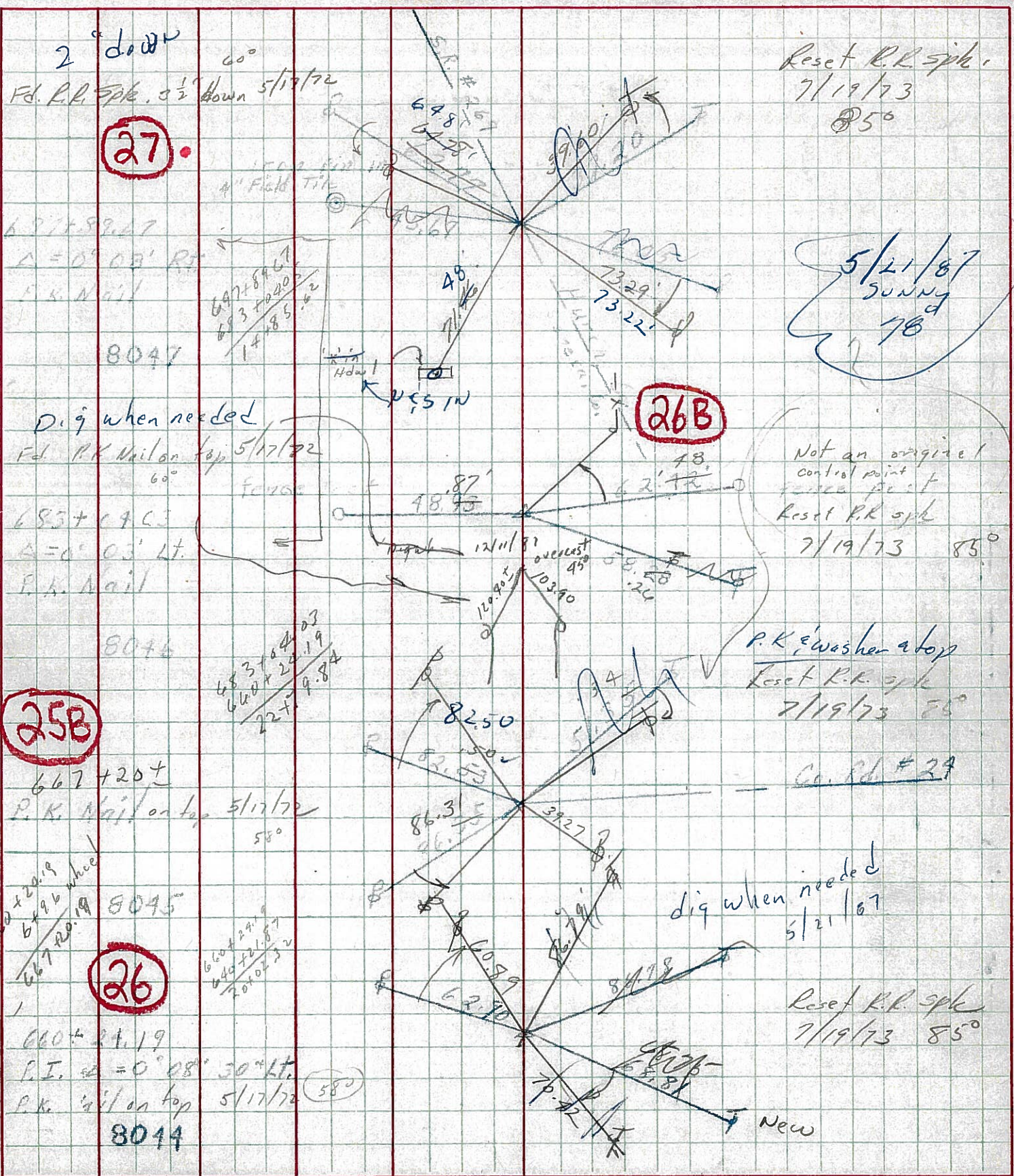
697+89.67
 $\Delta = 0^\circ 08' RT$
 P.K. Nail
 8317

683+04.03
 $\Delta = 0^\circ 03' Lt.$
 P.K. Nail
 8318

8315

660+24.19
 P.I. $\Delta = 0^\circ 08' 30" Lt.$
 P.K. Nail
 8319

PERSONNEL TITLE PERSONNEL TITLE COUNTY Seneca DATE 10-3-28
 S. R. 4 WEATHER Cloudy
 SEC. TEMP. 50°
 DESCRIPTION Ties for Control Points JOB NO.



PERSONNEL TITLE PERSONNEL TITLE

E. Krab, '11
Y. Kowalski
D. Brooks

COUNTY SENECA

DATE

S. R. 4

WEATHER

SEC.

TEMP.

DESCRIPTION

LEFT

CENTER LINE

RIGHT

JOB NO.

697789.67 # 2.69
P.I. Δ=0=08'-00" RT
P.k nail

1-22-64

(27)

Iron pin
in 4" Field Tife

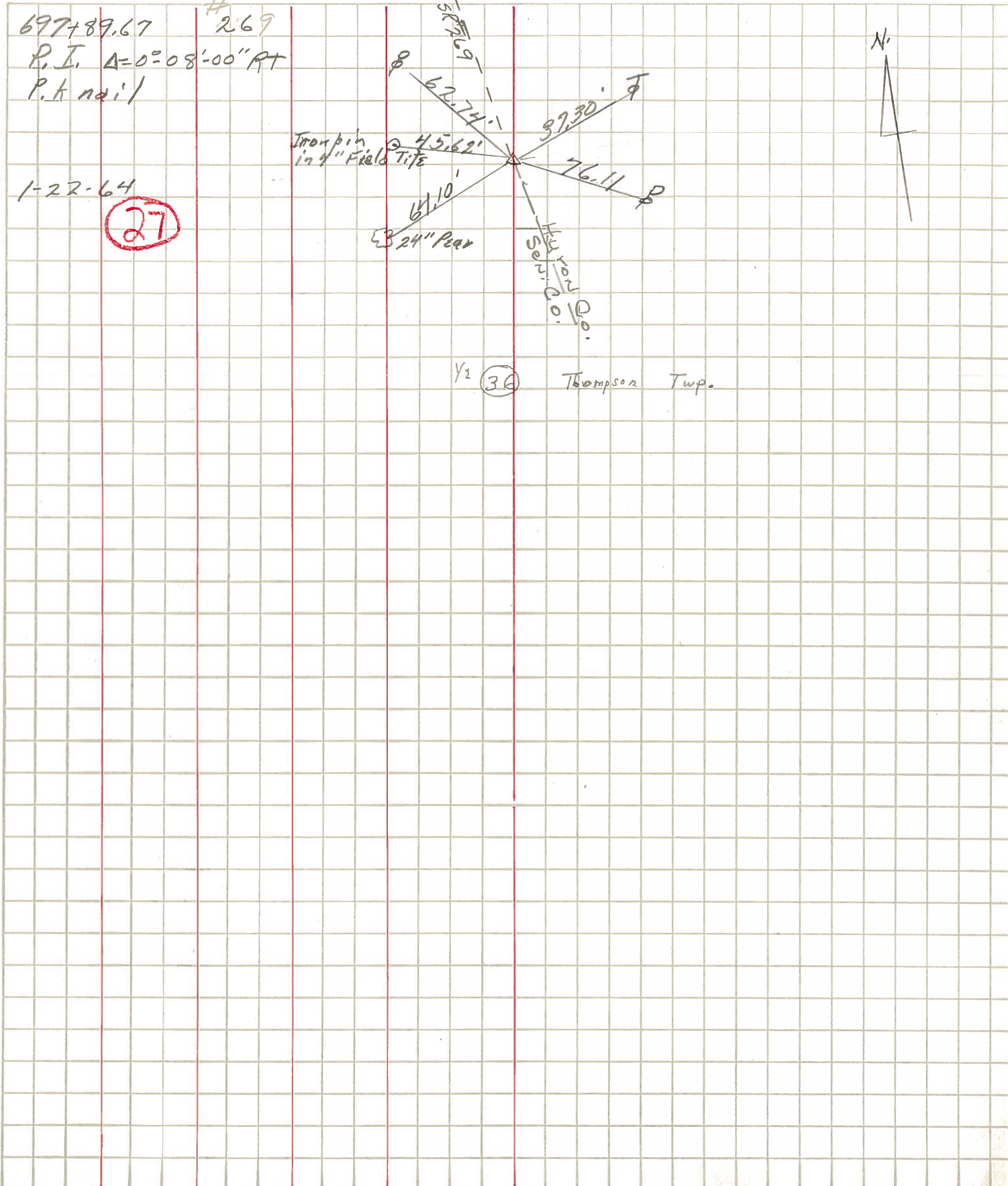
4.562'

6.110'
24" Pear

Huron Co.
Sew. Co.

1/2 (36)

Thompson Twp.

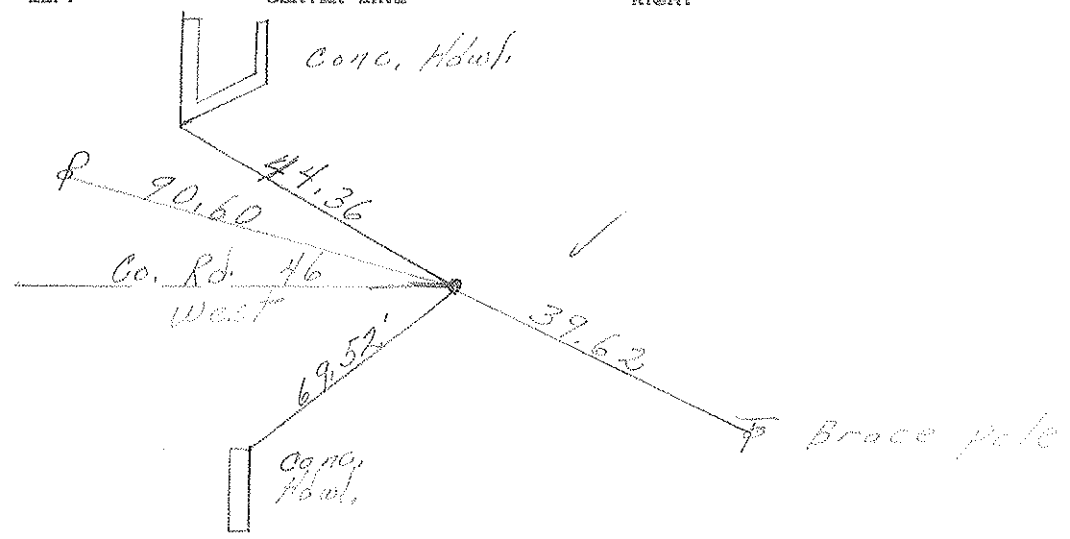


Not on to minute because I lost it SHEET NO. 1372

PERSONNEL	TITLE	PERSONNEL	TITLE	COUNTY	DATE	S. R.	WEATHER	TEMP.	JOB NO.
Schneider				Severa	7-14-71	269	Fair	75°	
Masser									
Geyman									
Viasoa									
DESCRIPTION: <u>Ties for control points</u>									
LEFT		CENTER LINE		RIGHT					

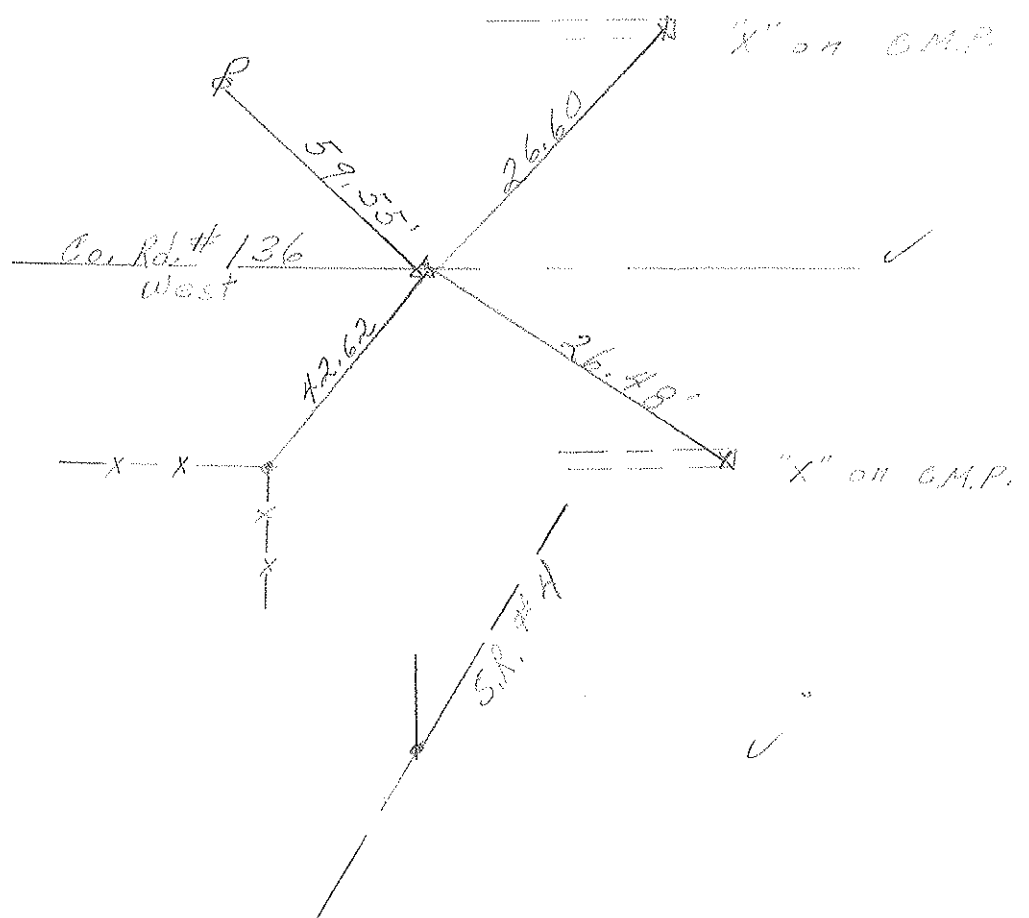
Fd. P.K. Nail
Sec. 30-31
3' Lt. of E

2



Fd. R.R. spk.
1/2" down
sec 31

1



P.K. Nail

✓