

O.D.O.T. DISTRICT 2 SURVEY OFFICE (USE ONLY)

PERSONNEL

REFERENCE NO. 28 G

SHEET 5 OF 9

NOTES LOEHRKE  
 H.C. CANTERBURY  
 R.C. HERMILLER  
VOGEL

DATE 5/2/94  
 WEATHER NICE  
 TEMP. 56°

ROUTE SR 2  
 COUNTY WILLIAMS  
 TOWNSHIP PULASKI  
 SECTION 17  
T 6 N R 3 E

DWG BY RHOADES PID \_\_\_\_\_

TYPE MONUMENT 3/8" BRASS IPIN

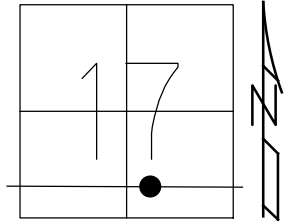
ON SURFACE - ~~BELOW~~ ON

OFFSET Q PAVEMENT ON \_\_\_\_\_ LT : RT  
 - TO - EDGE PAVEMENT

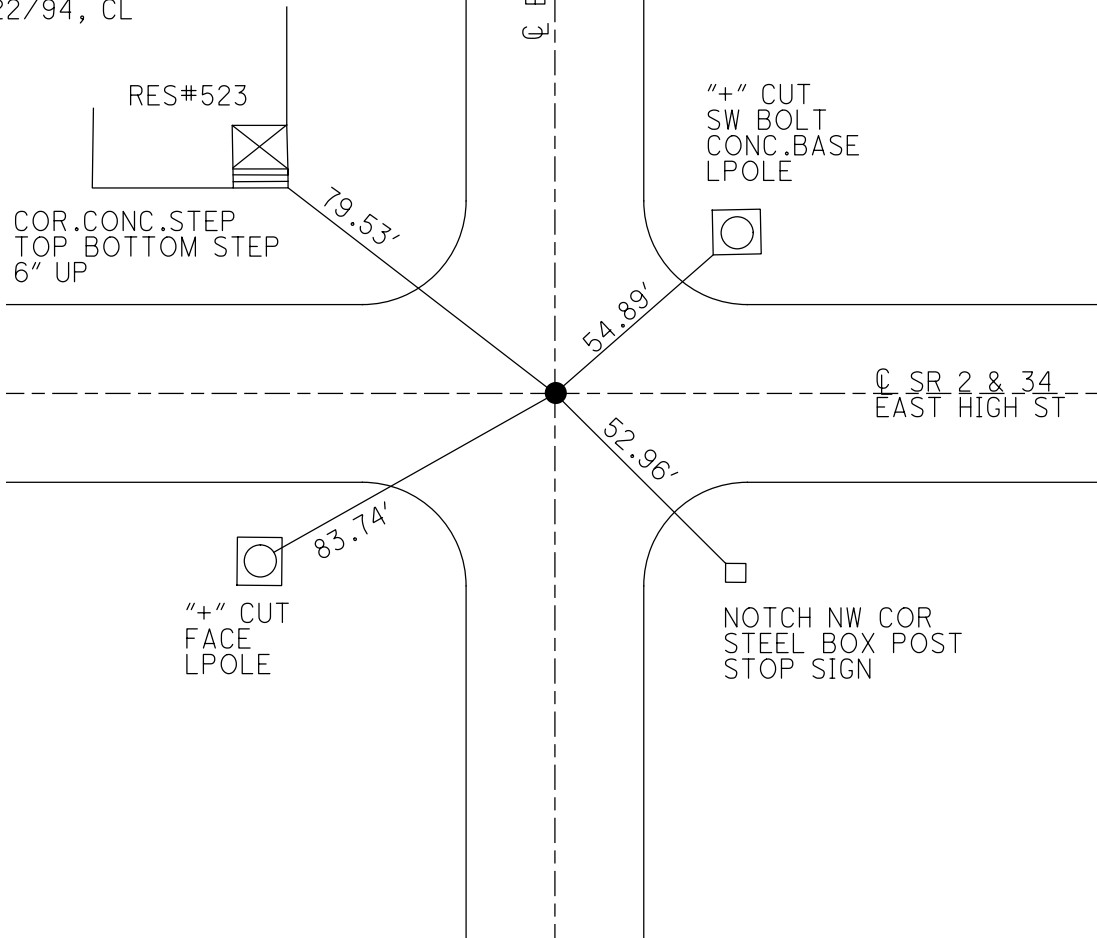
STATION: 335+53

HORZ. DATUM: \_\_\_\_\_ GEOID: \_\_\_\_\_

GRID: NORTHING: \_\_\_\_\_ EASTING: \_\_\_\_\_



RECORD: P.O.T.  
 STA. 912+39.38  
 FD 3/8" BRASS PIN  
 5/2/94, CL  
 SET P.K./WASHER  
 6/22/94, CL



# O.D.O.T. DISTRICT 2 SURVEY OFFICE

PERSONNEL

REFERENCE NO. 28 G

SHEET 5 OF 24

NOTES LOEHRKE

H.C. CANTERBURY

DATE 5-2-94

ROUTE S.R. 2

R.C. HERMILLER

WEATHER \_\_\_\_\_

COUNTY WILLIAMS

VOGEL

TEMP. \_\_\_\_\_

TOWNSHIP PULASKI

SECTION 17

T 6 N R 3 E

Set P.K. / WASHER  
6-22-94

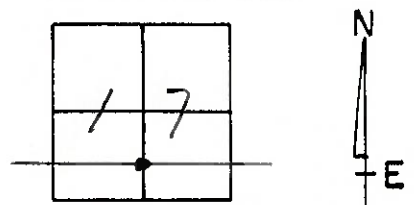
TYPE MONUMENT 3/8" BRASS PIN

ON SURFACE - BELOW Yes

LEFT - & PAV'T. - RIGHT Yes

— TO — EDGE PAVEMENT

S.L.M. 335 +53



RECORD:

P.O.T. Sta. 912+39.38

