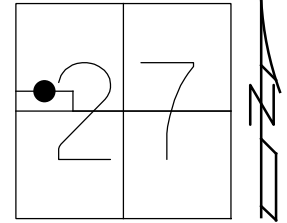


O.D.O.T. DISTRICT 2 SURVEY OFFICE (USE ONLY)

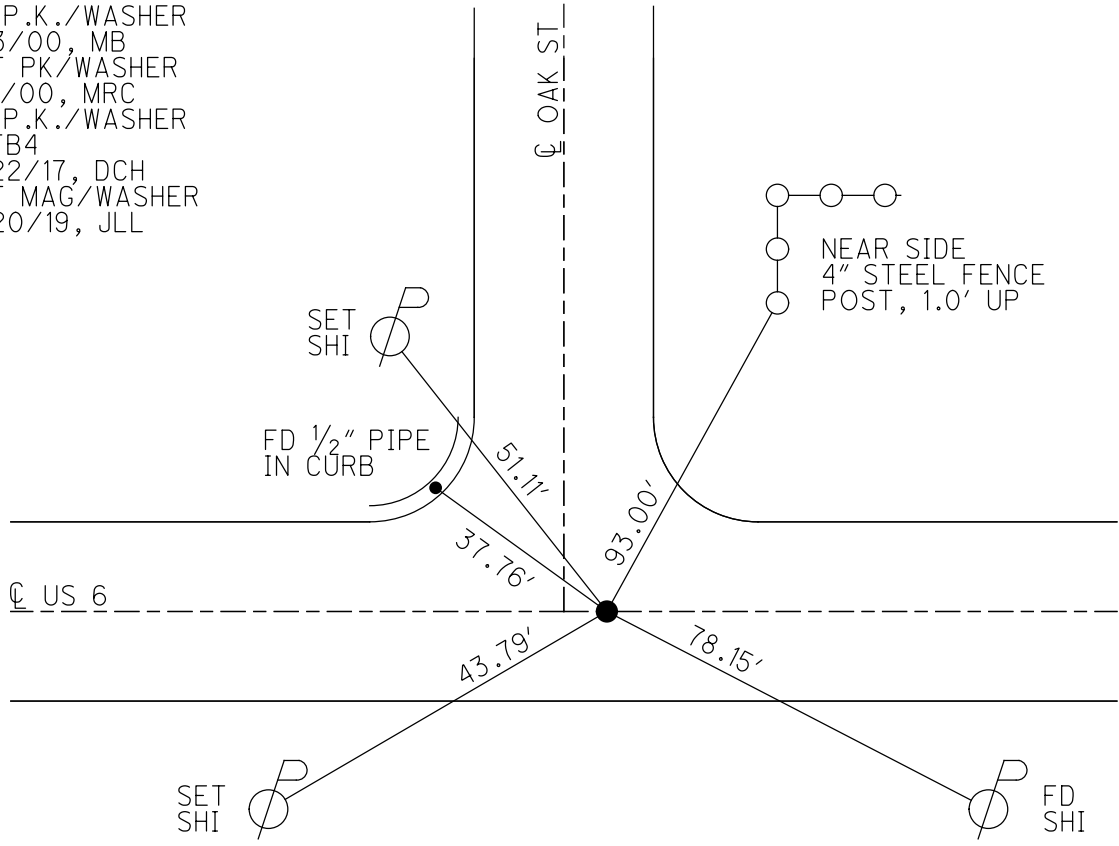
PERSONNEL \_\_\_\_\_ REFERENCE NO. 4 B SHEET 4 OF 41  
 NOTES TRENKA DATE 7/16/18 ROUTE US 6  
 H.C. LEU WEATHER CLOUDY COUNTY WILLIAMS  
 R.C. HAGEMeyer TEMP. 75° TOWNSHIP ST. JOSEPH  
 SECTION 27  
 DWG BY NIесе PID 102827 T 6 N R 1 E

TYPE MONUMENT P.K./WASHER  
 ON SURFACE - ~~BELOW~~ ON  
 OFFSET 0.8' LT : ~~RT~~  
12.5' TO RT EDGE PAVEMENT 4' E OF CL N  
 STATION: 166+94.09



HORZ. DATUM: NAD83 2011 GEOID: NAVD88 2012A  
 GRID: NORTHING: 657195.652 EASTING: 1352966.492

RECORD: P.O.T.  
 STA 167+00  
 FD P.K./WASHER  
 5/3/00, MB  
 SET PK/WASHER  
 8/1/00, MRC  
 FD P.K./WASHER  
 REFB4  
 2/22/17, DCH  
 SET MAG/WASHER  
 9/20/19, JLL



# O.D.O.T. DISTRICT 2 SURVEY OFFICE

PERSONNEL \_\_\_\_\_

REFERENCE NO. 4-B

SHEET 7 OF 32

NOTES CANTERBURY

H.C. MOSEK

DATE 5-3-00

ROUTE US 6

R.C. BARNHISEL III

WEATHER FAIR

COUNTY WILLIAMS

TEMP. +68°

TOWNSHIP St. Joseph

SECTION 27

T 6 N 1 E

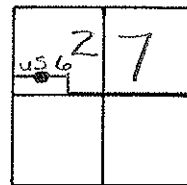
TYPE MONUMENT PK & WASHER

ON SURFACE - ~~BELOW~~ yes

~~LEFT - & PAV'T. - RIGHT~~ yes

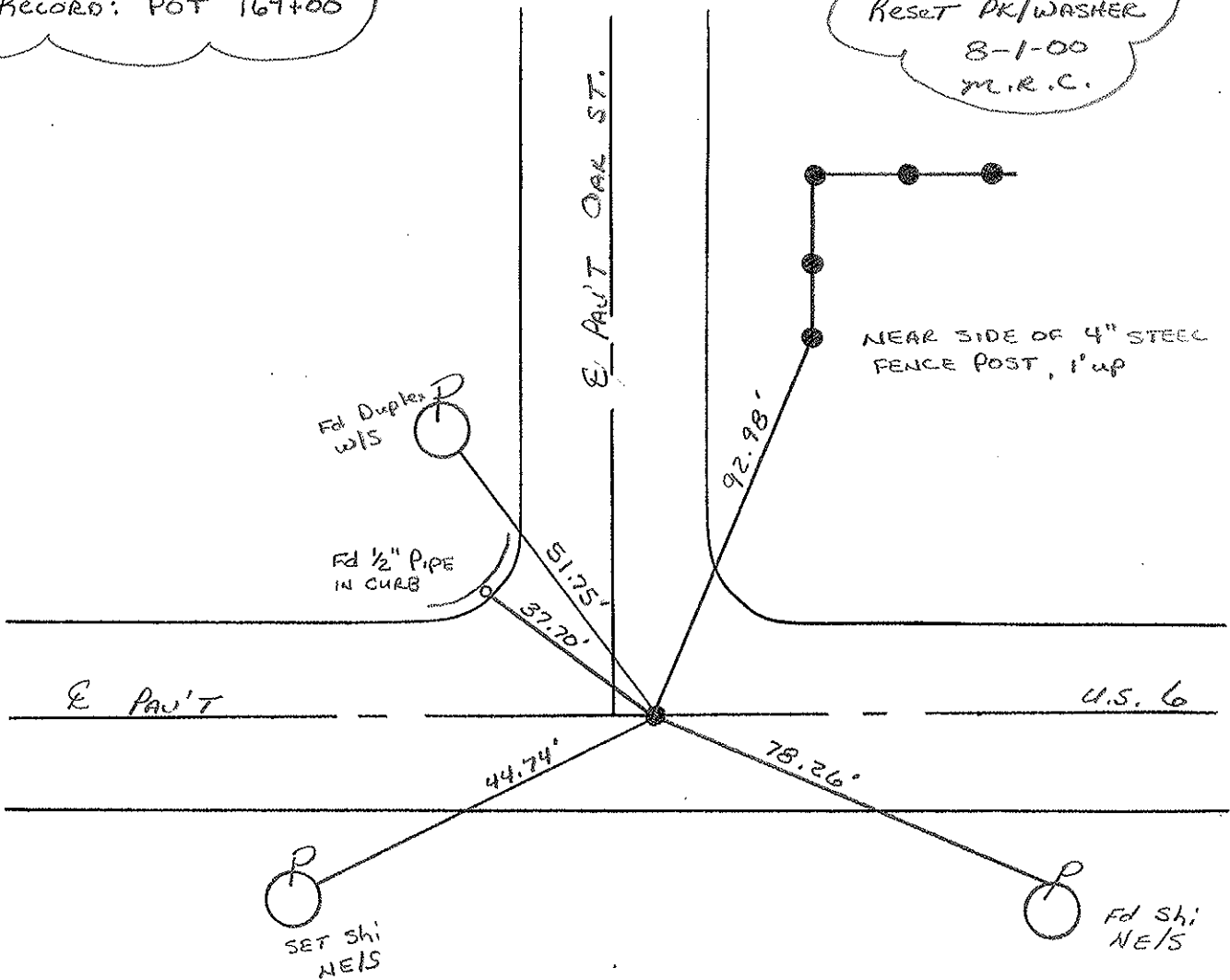
12.5' TO RT. EDGE PAVEMENT

S.L.M. 166+96 4' EAST OF E NORTH



RECORD: POT 167+00

RESET PK/WASHER  
8-1-00  
M.R.C.



# O.D.O.T. DISTRICT 2 SURVEY OFFICE

PERSONNEL \_\_\_\_\_

REFERENCE NO. \_\_\_\_\_

SHEET \_\_\_\_\_ OF \_\_\_\_\_

NOTES LOGHARKE

H.C. REED

R.C. BARNHISEL

DATE 4-11-88

WEATHER Pt Cloudy

TEMP. +55

ROUTE U.S. 6

COUNTY WILLIAMS

TOWNSHIP St. JOSEPH

SECTION 27

T & N R L E

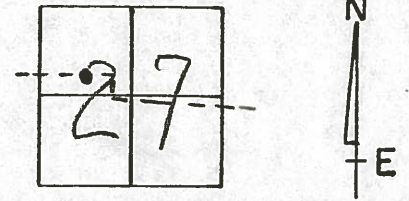
TYPE MONUMENT Sm R.P. Spike <sup>Reset P.K. & WASHER 6-6-88 C.L.</sup>

ON SURFACE - ~~BELOW~~

~~LEFT - C~~ PAV'T. - ~~RIGHT~~ U.S. 6 / 4.0 E of OAK ST &

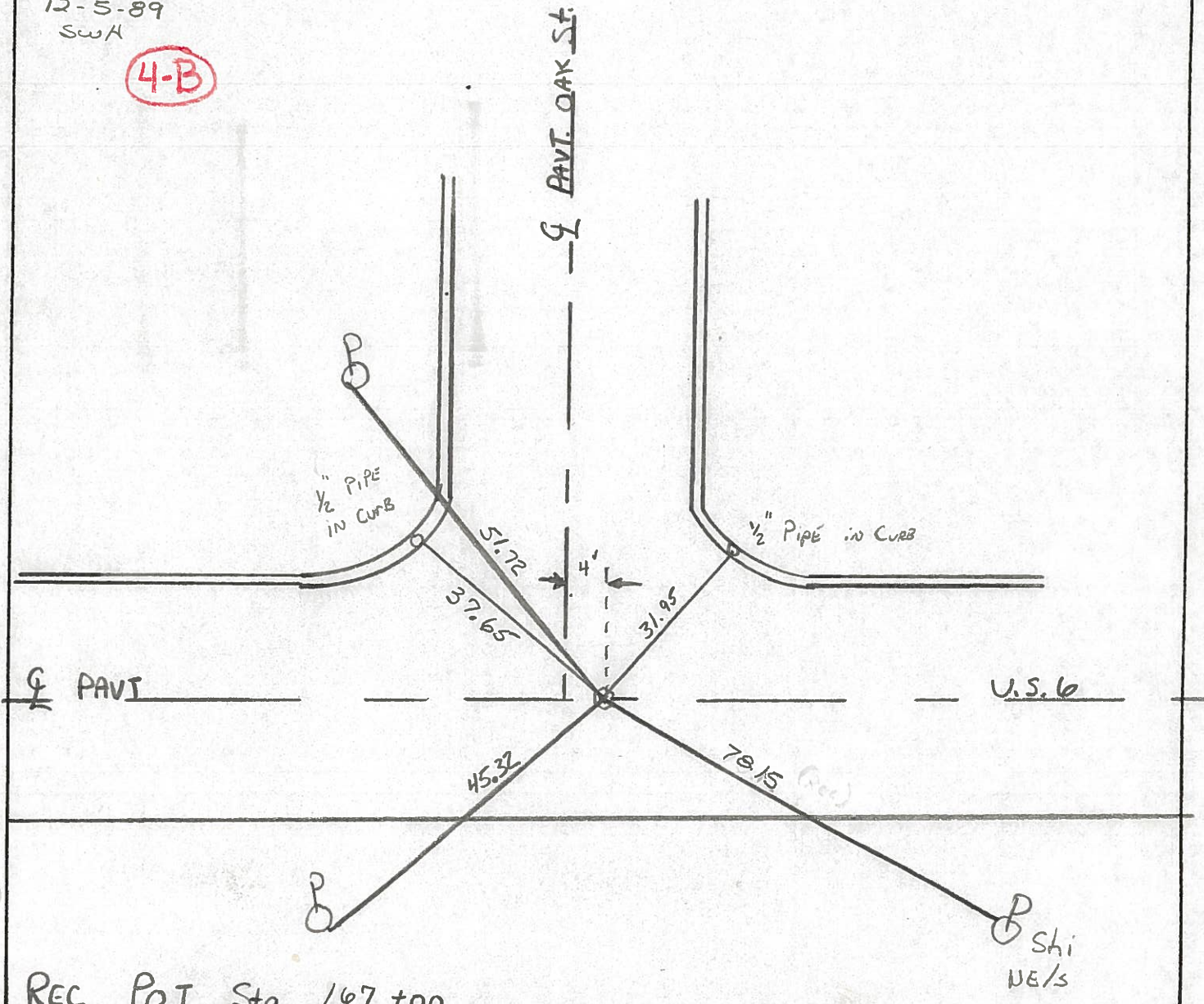
TO EDGE PAVEMENT

S.L.M. 166 + 96



Re-Set P.K./WASHER  
12-5-89  
SWA

4-B



REC. P.O.T. Sta. 167 + 00

County Williams S.R. U.S. 6

Date 7-15-81

Township St. Joseph

Weather P. Cloudy

Section 27 - IN Edgerton

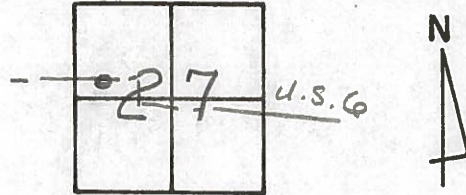
Temp. +65°

T6N, R1E

Personnel Hoffman

Loehrke

Householder



4-B

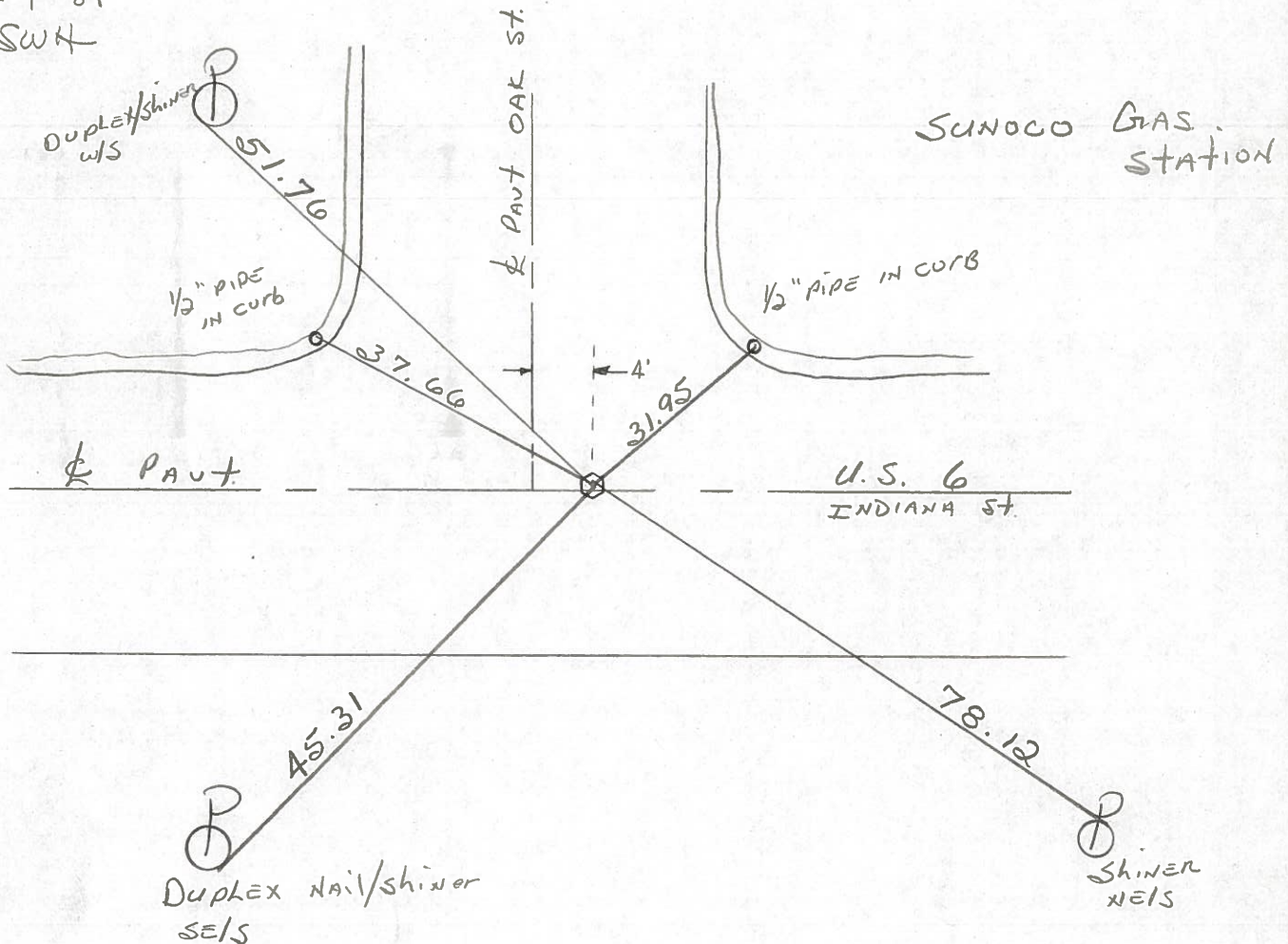
Fd. R.R. SPK @ SURFACE @ CTR. PAUT U.S. 6  
15.0 TO S. EP. U.S. 6

PROJECT STA ± 166+98

SET SMALL R.R. SPK.

11-4-81

SWH



P.O.T. STA 167+00 ~ REC.

PERSONNEL TITLE PERSONNEL TITLE

Red Beach  
Newcomb  
Knappe

COUNTY Wms

DATE June 1972

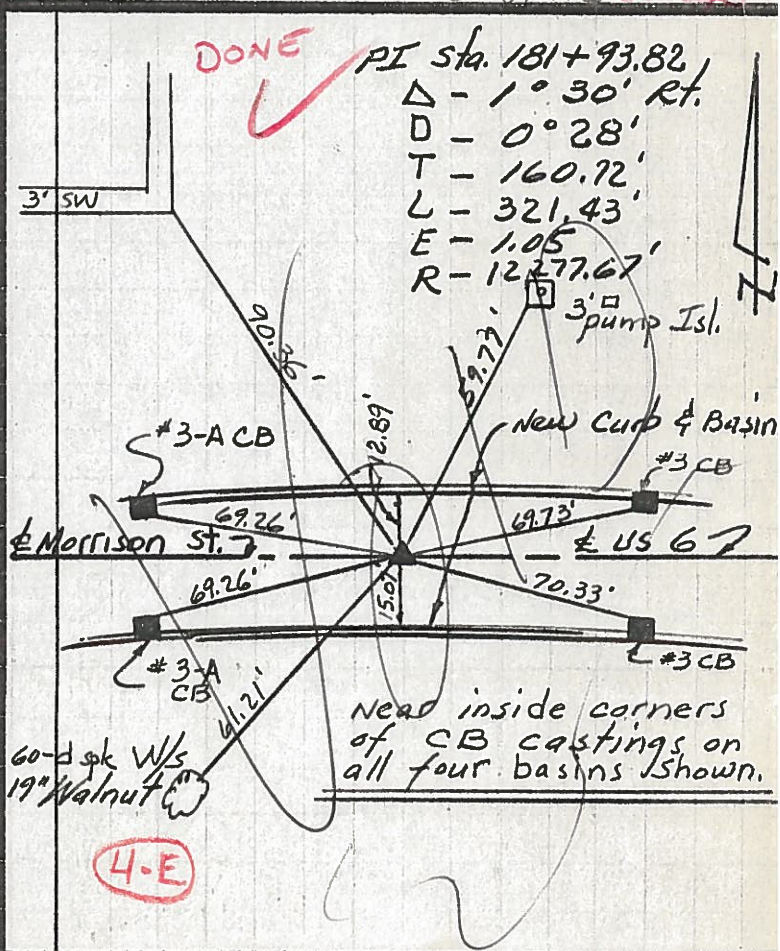
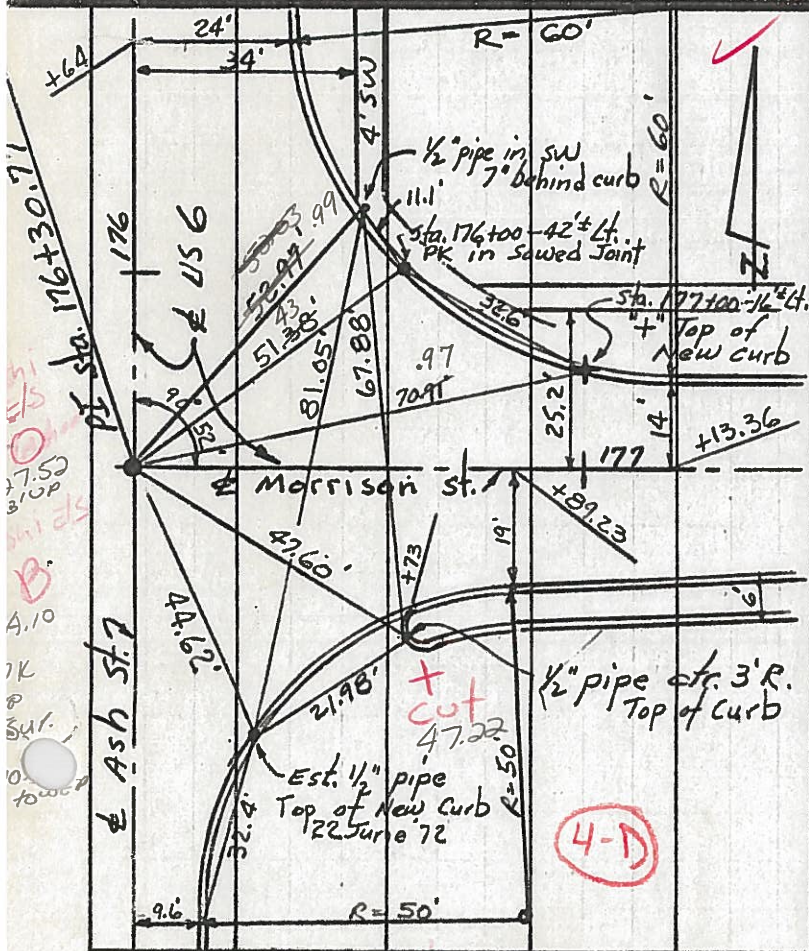
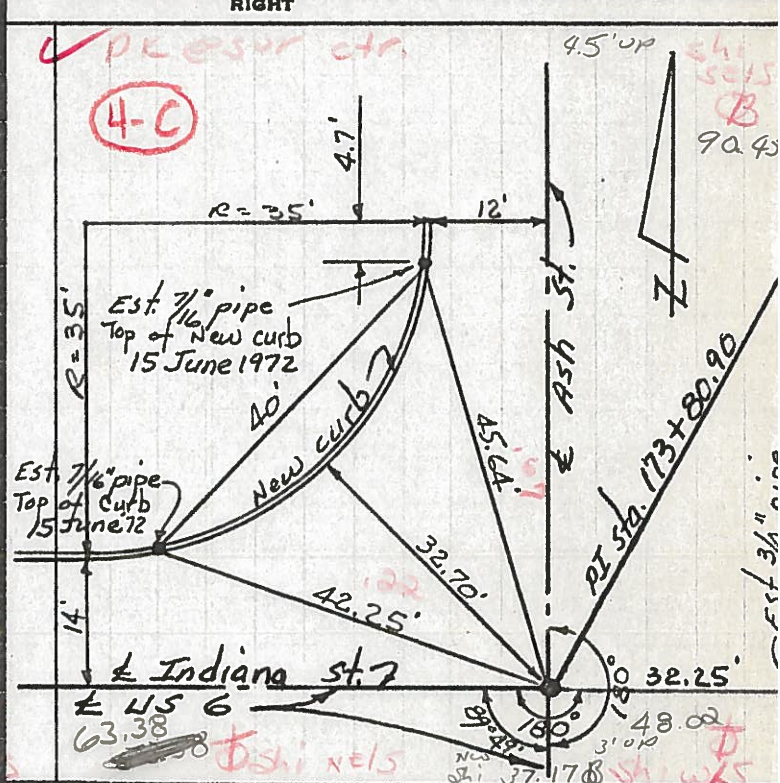
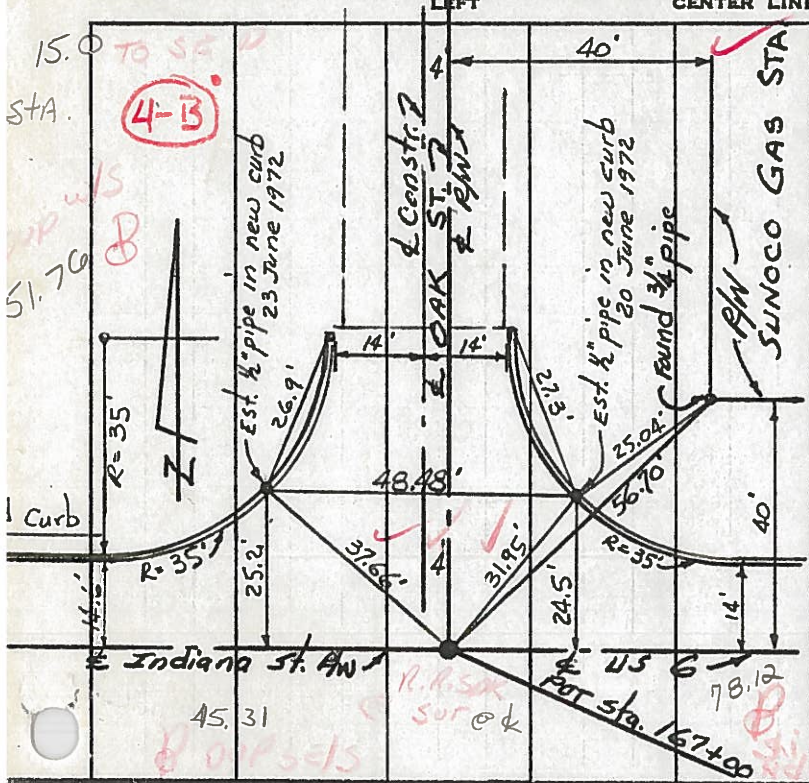
S. R. 45 6

WEATHER \_\_\_\_\_

SEC. Edgerton

TEMP. \_\_\_\_\_

DESCRIPTION New CONTROL POINT WITNESSES \_\_\_\_\_ JOB NO. \_\_\_\_\_



PERSONNEL TITLE PERSONNEL TITLE  
Red Beach  
Newcomb  
Knape

COUNTY Wms

DATE June 1972

S. R. US 6

WEATHER \_\_\_\_\_

SEC. Edgerton

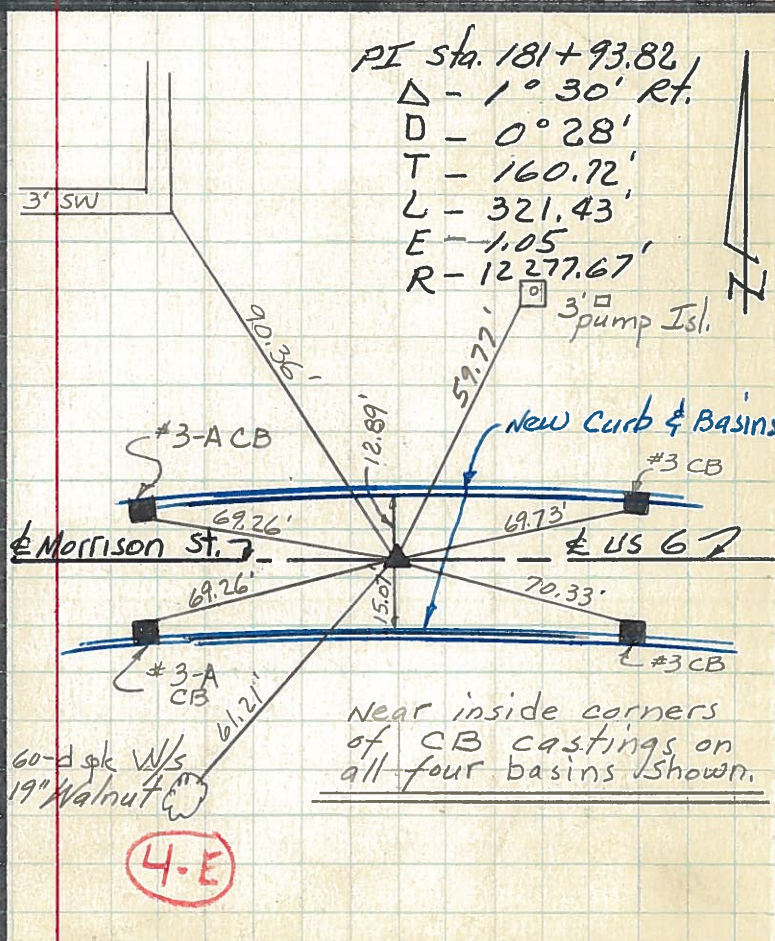
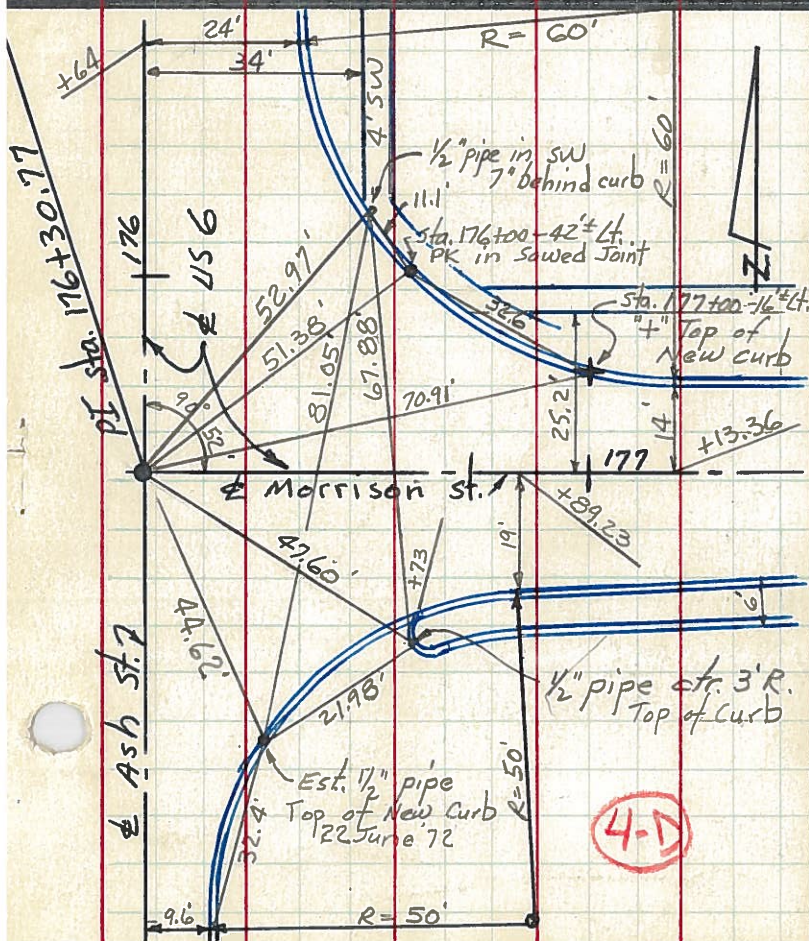
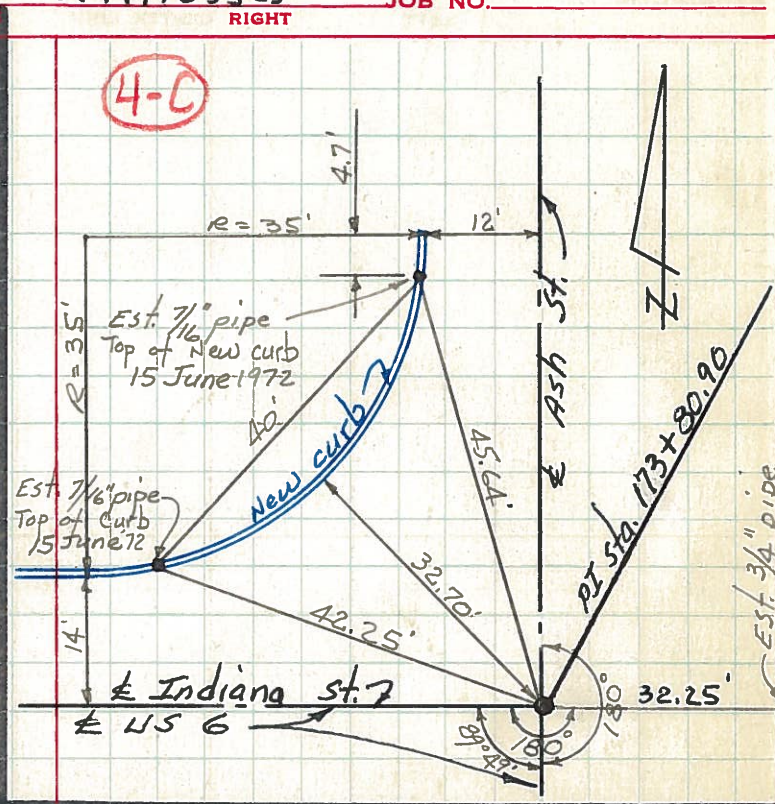
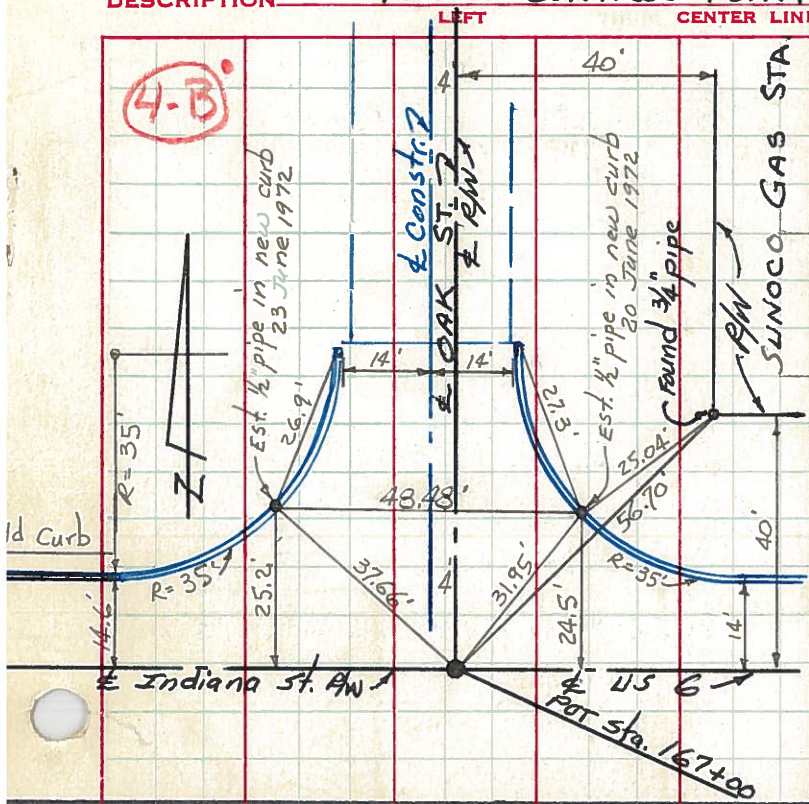
TEMP. \_\_\_\_\_

DESCRIPTION

New CONTROL POINT

Witnesses

JOB NO. \_\_\_\_\_



PERSONNEL	TITLE	PERSONNEL	TITLE	COUNTY	DATE
Red Beach				Williams	24 Feb '71
Newcomb				S. R.	US 6
Knape				SEC.	EDGERTON
Wise				WEATHER	
				TEMP.	

### CONTROL POINTS

