

O.D.O.T. DISTRICT 2 SURVEY OFFICE (USE ONLY)

PERSONNEL _____ REFERENCE NO. 4 H SHEET 10 OF 41
 NOTES LEU DATE 3/31/17 ROUTE US 6
 H.C. HOMAN WEATHER FOG COUNTY WILLIAMS
 R.C. HELDMAN TEMP. 42° TOWNSHIP ST. JOSEPH
 DWG BY NIESE PID 102827 SECTION 27
 T 6 N R 1 E

TYPE MONUMENT SM.R.R.SPIKE

~~ON SURFACE~~ - BELOW 3"

OFFSET \odot PAVEMENT 2.7' \pm : RT

9.5' TO RT EDGE PAVEMENT

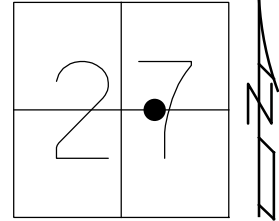
STATION: 194+15.48

HORIZ.DATUM: NAD83 2011

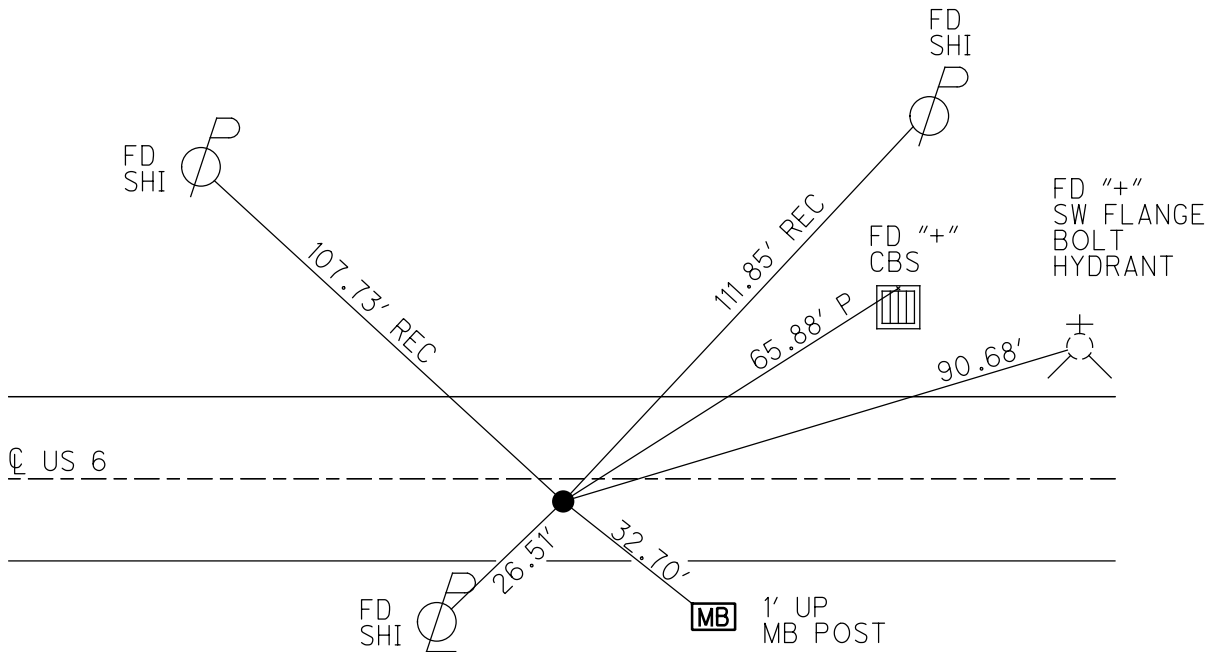
GEOID: NAVD88 2012A

GRID: NORTHING: 656832.796

EASTING: 1355429.133



RECORD: P.I.
 STA 17+90.49
 FD P.K./WASHER
 5/3/00, MB
 SET P.K./WASHER
 8/1/00, MRC
 SET MAG/WASHER
 7/16/18, JLL
 SET MAG/WASHER
 9/23/19, JLL



O.D.O.T. DISTRICT 2 SURVEY OFFICE

PERSONNEL

REFERENCE NO. 4-H

SHEET 13 OF 32

NOTES CANTERBURY

H.C. Moser

R.C. BARNHISEL III

DATE 5-3-00

WEATHER FAIR

TEMP. +68°

ROUTE 6

COUNTY WILLIAMS

TOWNSHIP St. Joseph

SECTION 27

T. 6 N. 1 E.

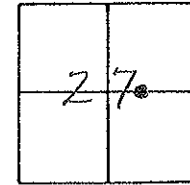
TYPE MONUMENT PK/Washer

ON SURFACE - BELOW yes

LEFT - & PAU'T. - RIGHT 3.0'

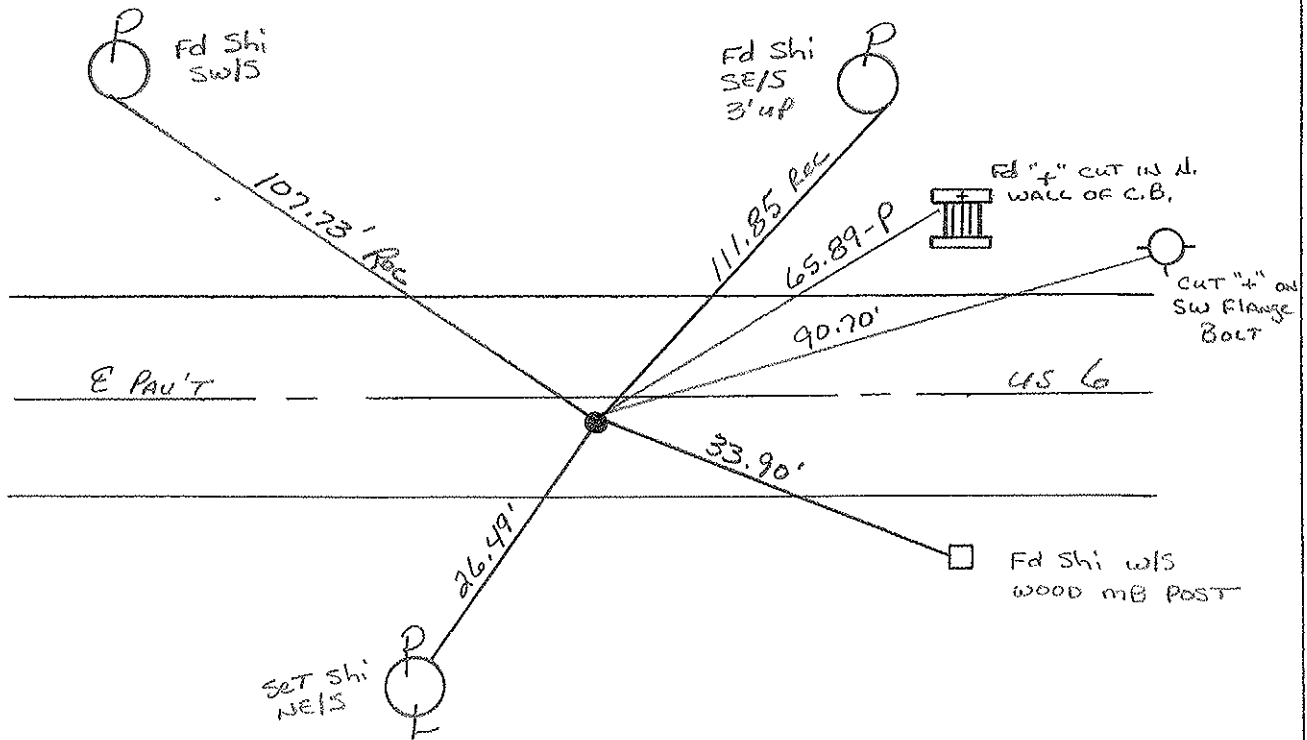
9.5' TO RT EDGE PAVEMENT

S.L.M. 194+20



Record PI = 17+90.49

RESET PK/WASHER
8-1-00
M.R.C.



O.D.O.T. DISTRICT 2 SURVEY OFFICE

PERSONNEL

REFERENCE NO. 4A

SHEET 11 OF

NOTES LOEHRKE

H.C. REED

R.C. BARNHISEL

Hoffman

DATE 4-12-88

WEATHER CLEAR

TEMP. +45

ROUTE U.S. 6

COUNTY WILLIAMS

TOWNSHIP St JOSEPH

SECTION 27

T & N R L E

P.K. & WASHER 5-31-88

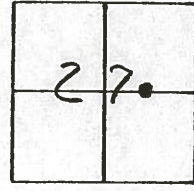
TYPE MONUMENT Sm. R.R. Spike

ON SURFACE - ~~BELOW~~ 2.8

~~LEFT - & PAV'T.~~ - RIGHT 2.8

8.5 TO Lt EDGE PAVEMENT

S.L.M. 194+20



P.I. Sta 17+90.49
RECORD

4-H

Shi w/s

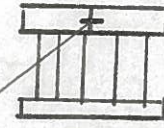
Shi SE/S
3' UP

107.73 -D

111.25 (Rec)

65.90 -P

"+" IN CONG.
N. PARAPET
of C.B.



CUT "+"
Lower HYDRAULIC
FLAM

90.63

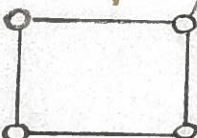
♀ PAVT

U.S. 6

33.72

62.60 -D

Shi w/s
MAIL Box Post



2 1/2" PIPE GUARD
FOR GAS VALVE / OHIO GAS Co.

County Williams S.R. U.S. 6

Date 7-15-81

Township St. Joseph

Weather cloudy

Section 27

Temp. +75°

T6N, R1E

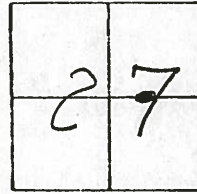
Personnel HOFFMAN

Loehrke

Householder

4-H

~~4-A~~



Fd. "+" ON CONC. 1 5/8" Below Asphalt

Product STA ± 194 +20

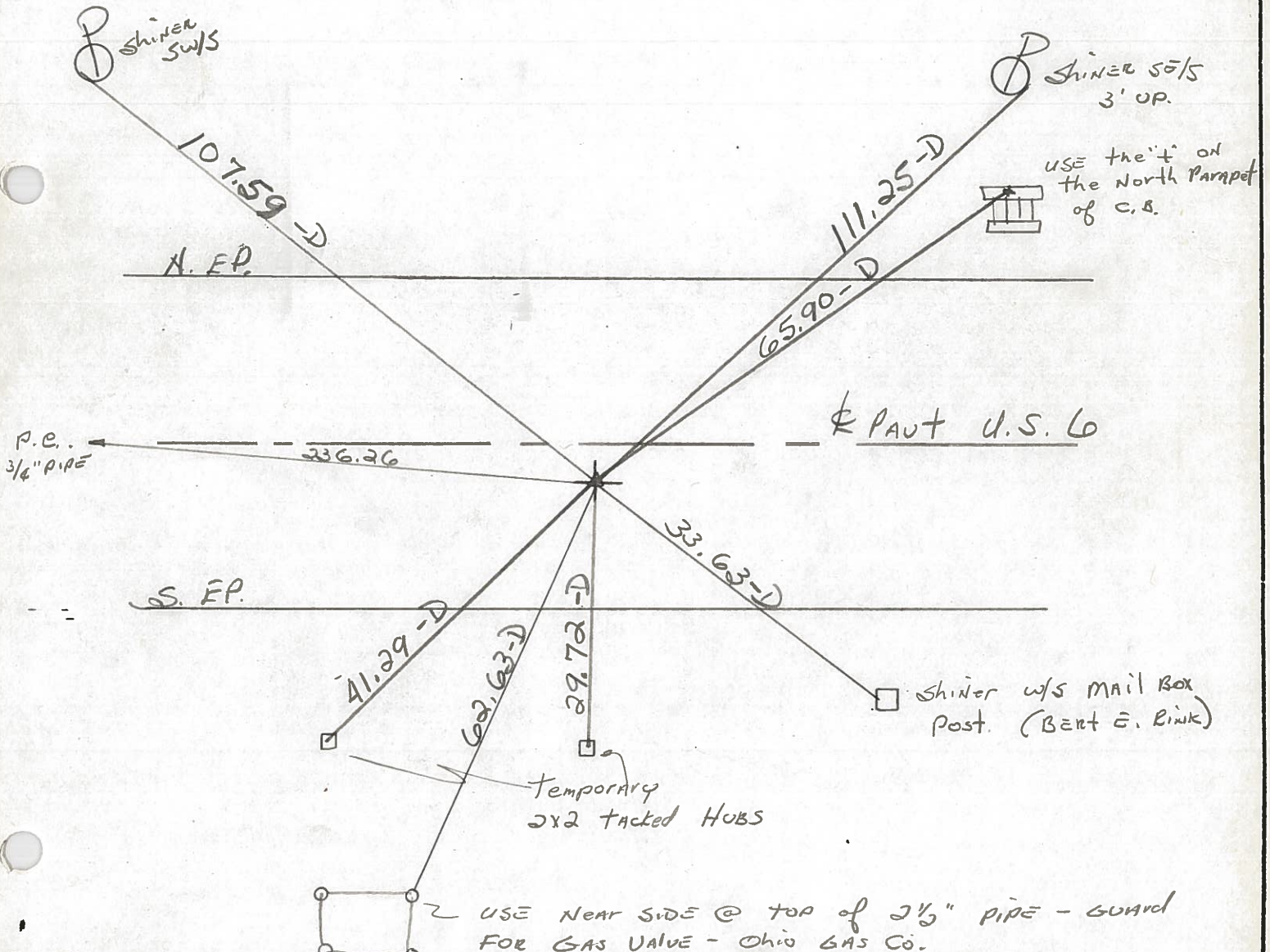
3.0' S. of & PAUT

17.0' to N. EP.

SET SMALL R.R. SPK.

11.7' to S. EP.

11-5-81 SWH.



P. I. STA. 17+90.49 ~ Rec.

PERSONNEL TITLE PERSONNEL TITLE

Red Beach
W. Krape

COUNTY Williams DATE 18/19 Mar '76

S. R. US 6 WEATHER

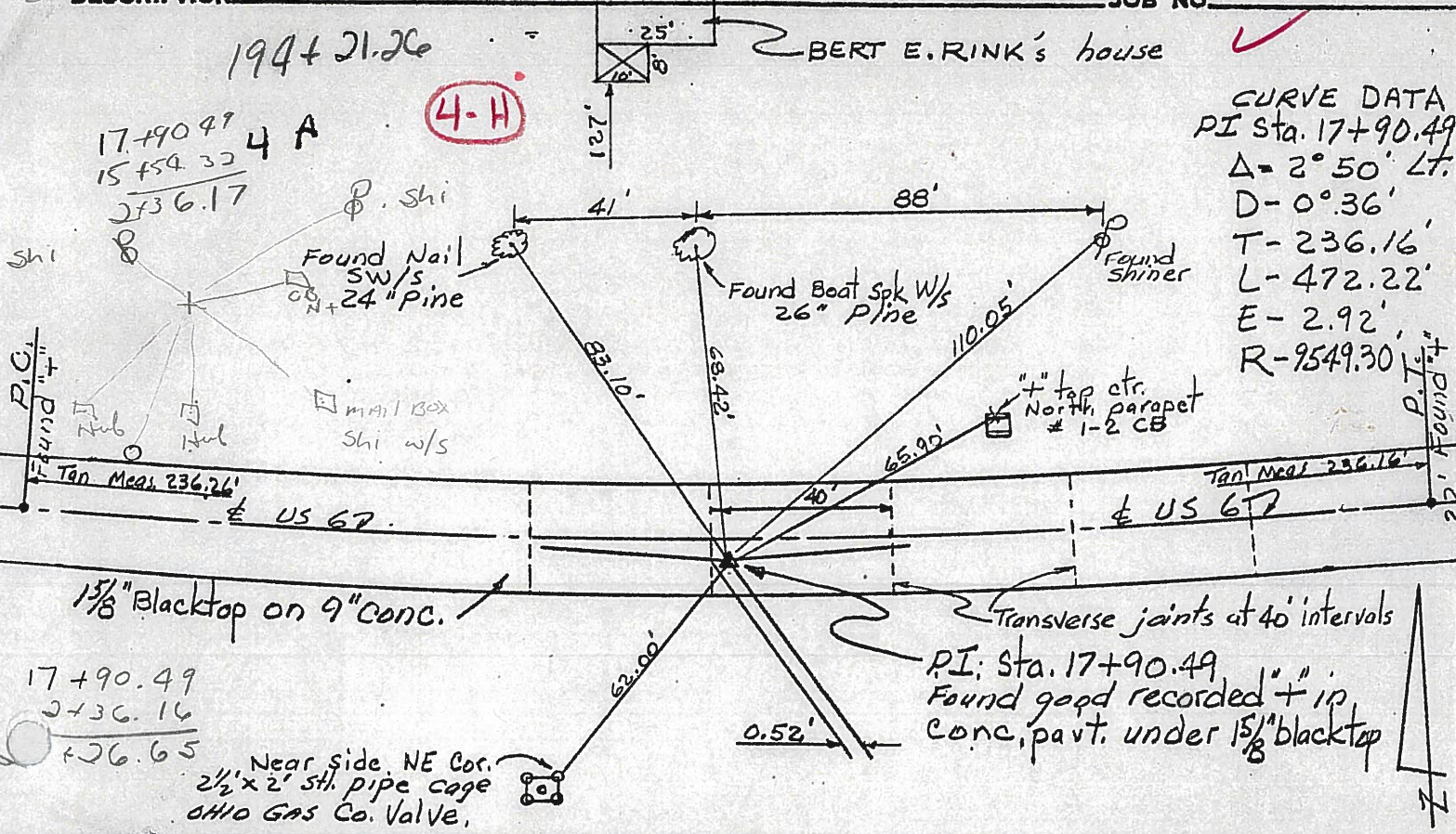
SEC. 27 St. Joseph Twp TEMP

DESCRIPTION CONTROL POINTS JOB NO

194+21.26

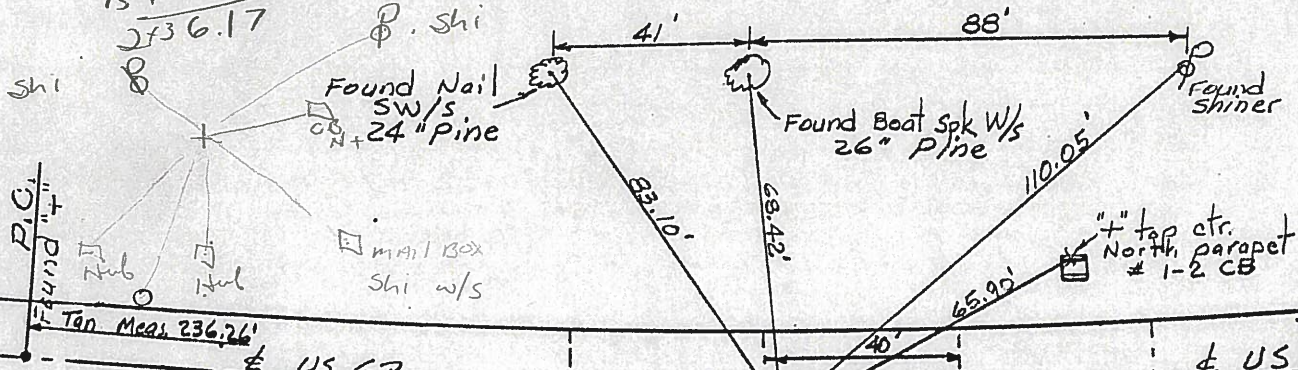
BERT E. RINK'S house

CURVE DATA
PI Sta. 17+90.49
 $\Delta = 2^{\circ} 50' \text{ Lt.}$
 $D = 0^{\circ} 36'$
 $T = 236.16'$
 $L = 472.22'$
 $E = 2.92'$
 $R = 9549.30'$



17+90.49
15+54.32
2+36.17
4 A

4-H



1 5/8" Blacktop on 9" conc.

Transverse joints at 40' intervals
P.I. Sta. 17+90.49
Found good recorded "+" in conc. part. under 1 5/8" blacktop

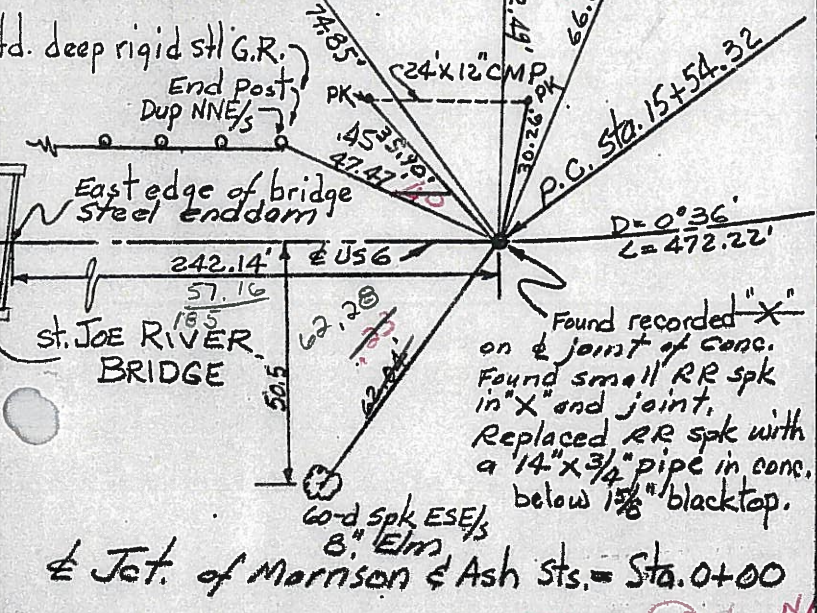
17+90.49
2+36.16
+26.65

Near side, NE Cor.
2 1/2 x 2' stl. pipe cage
OHIO GAS Co. Valve.

191+83

3 N. EA
7 S. EA

4-G



18505
EDISON Transformer Station
Steel Security Fence
45'

hd. deep rigid stl G.R.
End Post
Dup NNE/S

East edge of bridge
Steel enddam
St. JOE RIVER BRIDGE

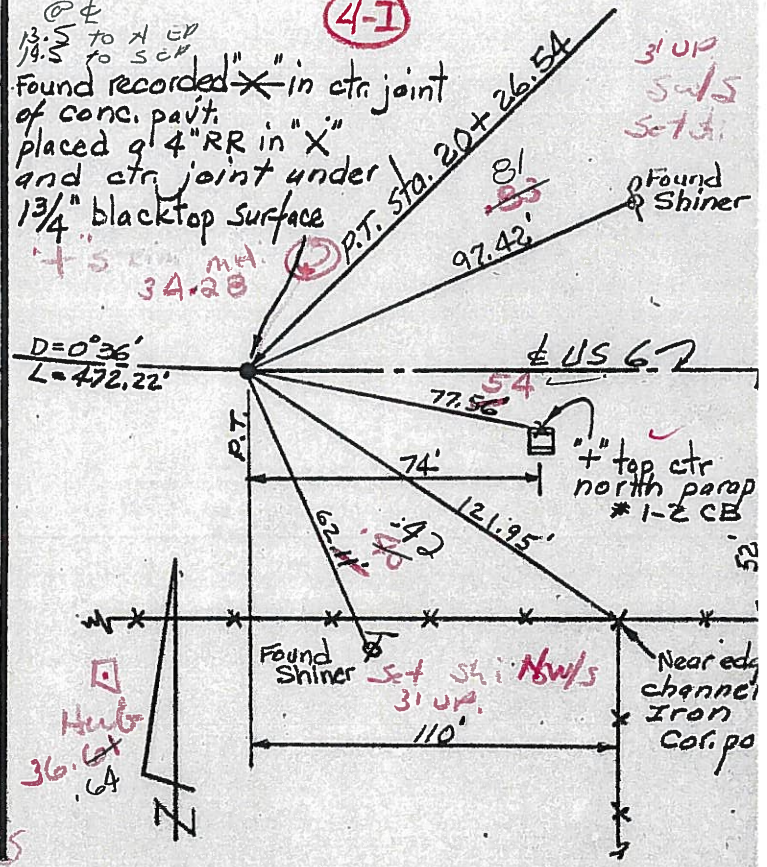
Found recorded "X" on joint of conc. Found small RR spk in "X" and joint. Replaced RR spk with a 1 1/4" x 3/4" pipe in conc. below 1 5/8" blacktop.

at Jct. of Morrison & Ash Sts. = Sta. 0+00

196+57.31

+56

4-I



Found recorded "X" in ctr joint of conc. part. placed a 4" RR in "X" and ctr joint under 1 3/4" blacktop surface

$D = 0^{\circ} 36'$
 $L = 472.22'$

US 67

Found Shiner
Set Shi NW/S
31 up

Near edge channel Iron Cor. po

PERSONNEL TITLE PERSONNEL TITLE

COUNTY W.I.

DATE

9/4/58

Louys

Wise

Krohn

Pessefall

S. R. 6

WEATHER

Fair

E. Corp. Line Edgerton

SEC to Intersed. Rt #2

TEMP.

75°

DESCRIPTION

Witnesses to Control Points

JOB NO. _____

LEFT

CENTER LINE

RIGHT

(5)

4

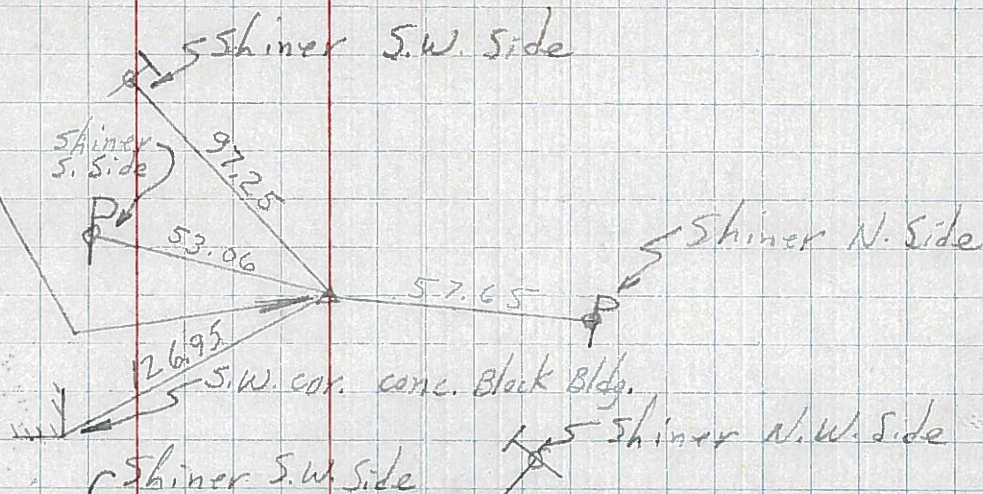
P.I. - Sta. 36+73.57

$\Delta 0^\circ-26' RT$

1" Iron Pipe

P.O.T. - Sta. 30+13.6

No Record.

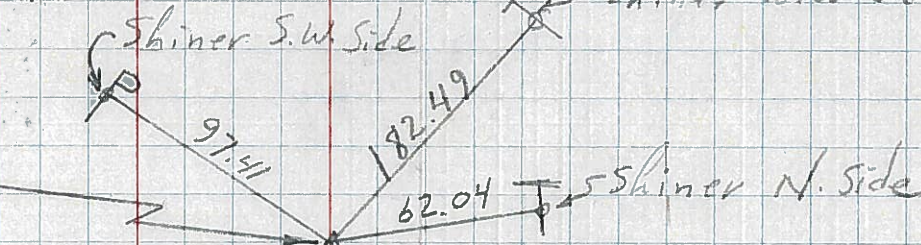


(4I)

3

P.T. - Sta. 20+26.54

X-IN Part.



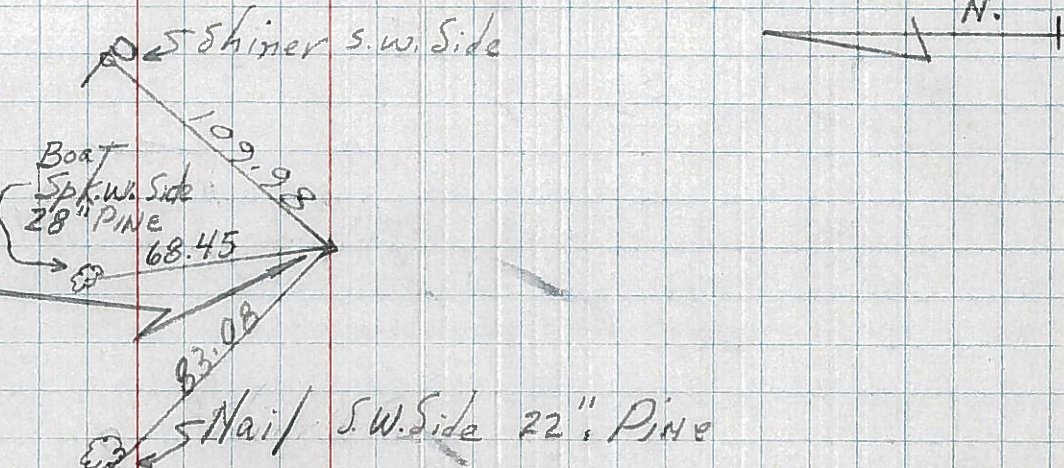
(4-II)

2

P.I. - Sta. 17+90.49

$\Delta = 2^\circ-50' LT.$

X-IN Part.



(4-G)

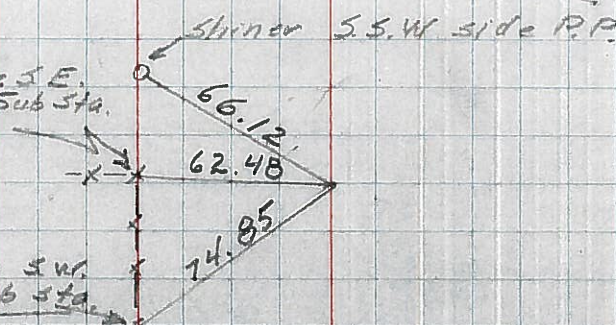
I

PC Sta. 15+54.32

X-in Part.

Near side S.E. Iron Cor. Post. Sub Sta. fence.

Near side S.W. Cor. Post. Sub Sta. fence.



Note - station 12+00 = ctr. of St. Joseph River Bridge