

O.D.O.T. DISTRICT 2 SURVEY OFFICE (USE ONLY)

PERSONNEL _____

REFERENCE NO. 6

SHEET 14 OF 41

NOTES LEU

DATE 7/16/18

ROUTE US 6

H.C. LEU

WEATHER HUMID, CLOUDY

COUNTY WILLIAMS

R.C. HAGEMeyer

TEMP. 83°

TOWNSHIP ST. JOSEPH

SECTION 25

DWG BY NIESE PID 102827

T 6 N R 1 E

TYPE MONUMENT P.K./WASHER

ON SURFACE - ~~BELOW~~ ON

OFFSET \varnothing PAVEMENT 0.2' ~~±~~ : RT

- TO - EDGE PAVEMENT

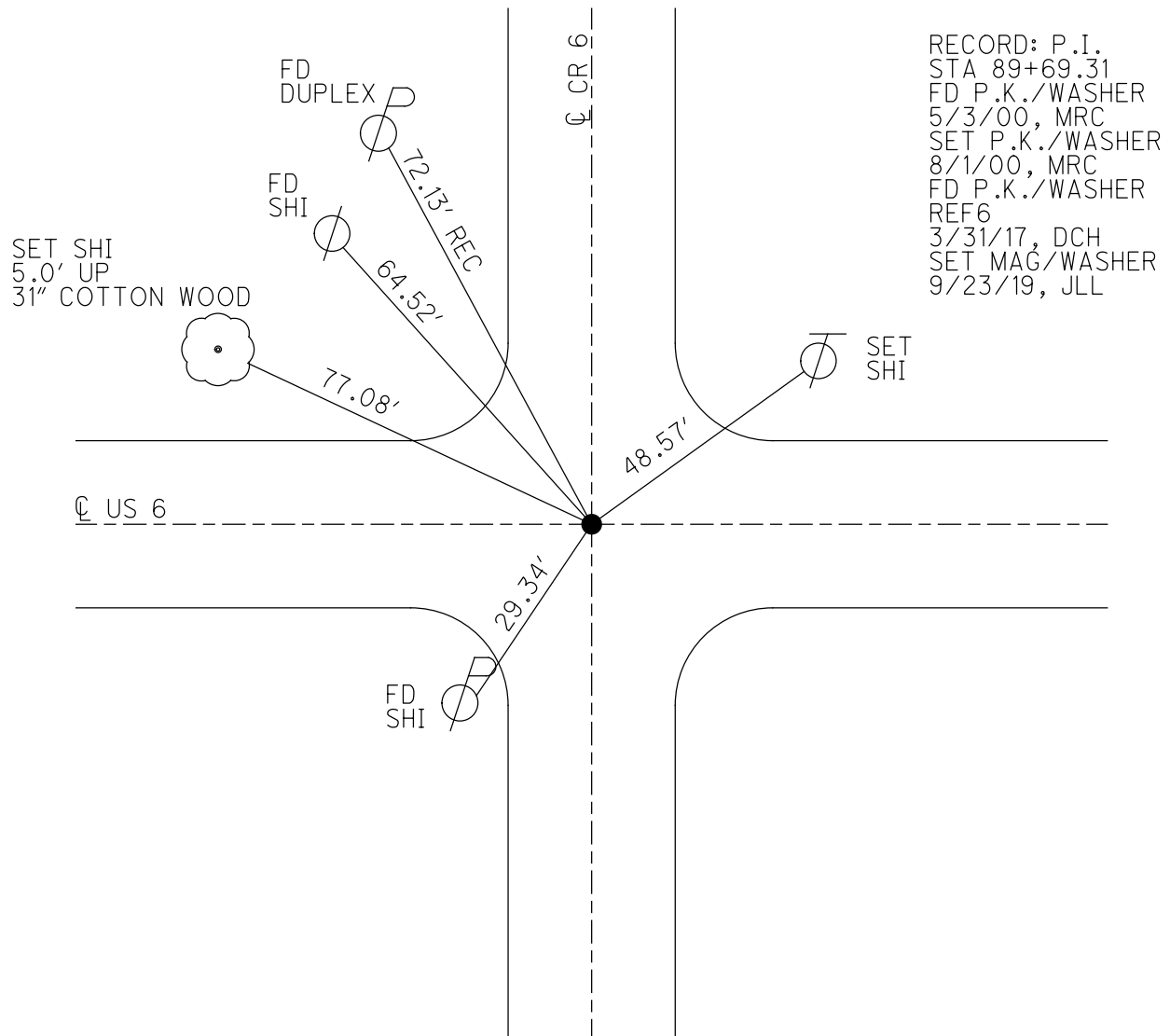
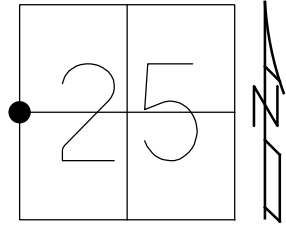
STATION: 265+93.93

HORZ.DATUM: NAD83 2011

GEOID: NAVD88 2012A

GRID: NORTHING: 656688.794

EASTING: 1362605.676



RECORD: P.I.
 STA 89+69.31
 FD P.K./WASHER
 5/3/00, MRC
 SET P.K./WASHER
 8/1/00, MRC
 FD P.K./WASHER
 REF6
 3/31/17, DCH
 SET MAG/WASHER
 9/23/19, JLL

O.D.O.T. DISTRICT 2 SURVEY OFFICE

PERSONNEL _____

REFERENCE NO. 6

SHEET 17 OF 32

NOTES CANTERBURY

H.C. MOSEK

DATE 5-3-00

ROUTE 6

R.C. BARNHISEL III

WEATHER FAIR

COUNTY WILLIAMS

TEMP. +68°

TOWNSHIP St. Joseph

SECTION 25

T 6 N 1 E

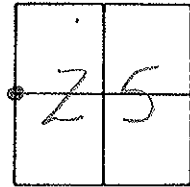
TYPE MONUMENT PK/WASHER

ON SURFACE - BELOW YES

LEFT - PAV'T. - RIGHT 0.2

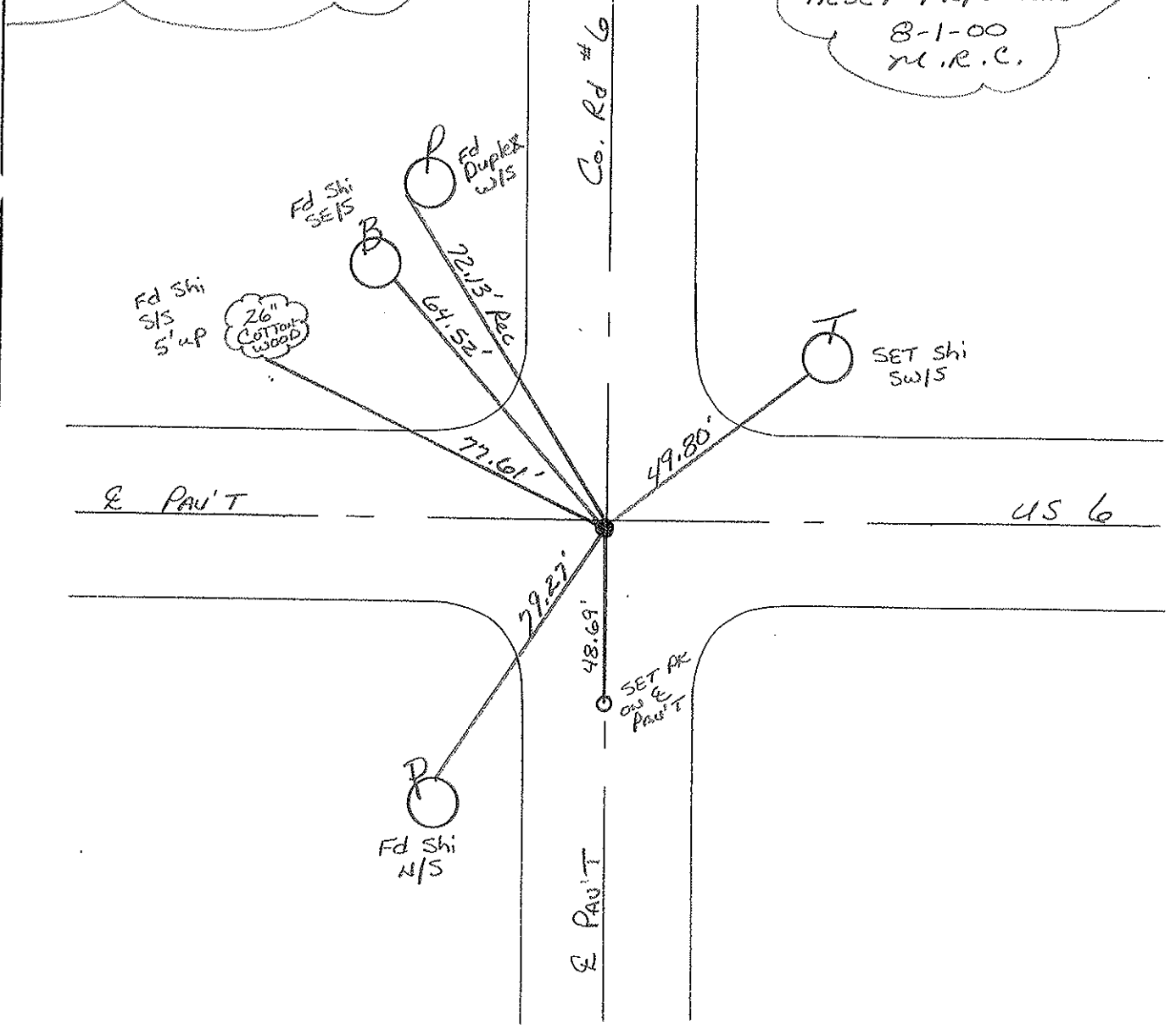
- TO - EDGE PAVEMENT

S.L.M. Z66+01 ON E N&S



Record PI = 89+69.31

RESET PK/WASHER
8-1-00
M.R.C.



O.D.O.T. DISTRICT 2 SURVEY OFFICE

PERSONNEL

REFERENCE NO. 16

SHEET 15 OF

NOTES LOCHRICE

H.C. REED

R.C. BARNHISEL

Hoffman

DATE 4-12-88

WEATHER CLEAR

TEMP. +50

ROUTE U.S. 6

COUNTY WILLIAMS

TOWNSHIP St JOSEPH

SECTION 25

T6 N R 1 E

TYPE MONUMENT Set P.K. & WASHER
Sm. R.R. Spike

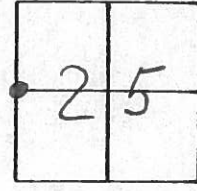
6-6-88

ON SURFACE - BELOW

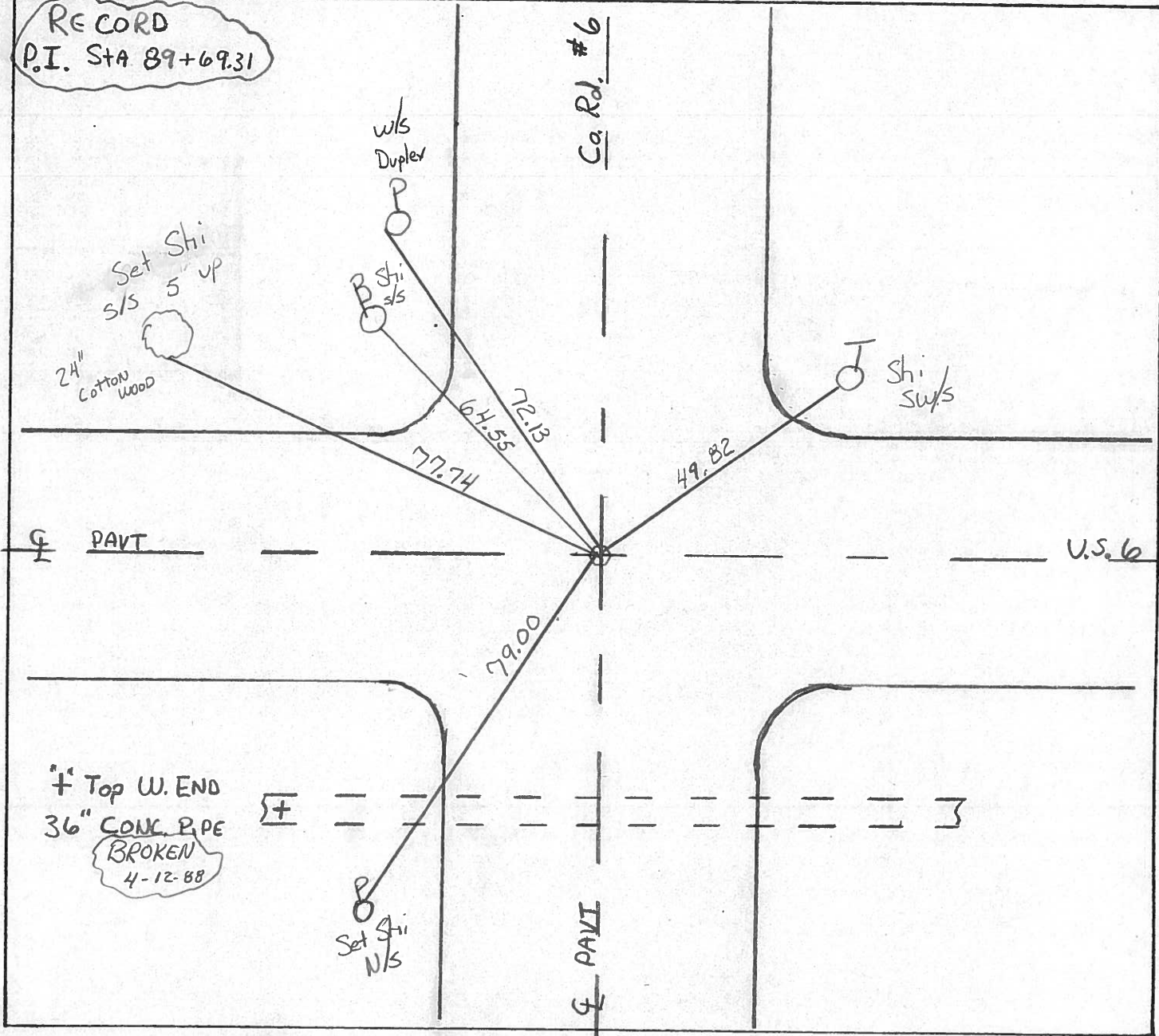
~~LEFT - & PAV'T. - RIGHT~~ BOTH ROADS

TO EDGE PAVEMENT

S.L.M. 266 + 01



RECORD
P.I. STA 89+69.31



County Williams S.R. U.S. 6

Date 7-20-81

Township St. Joseph

Weather RAIN

Section 25

Temp. +75°

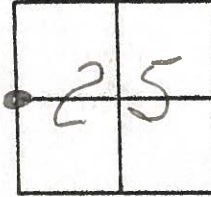
T&N, RLE

Personnel Hoffman

Loehrke

Householder

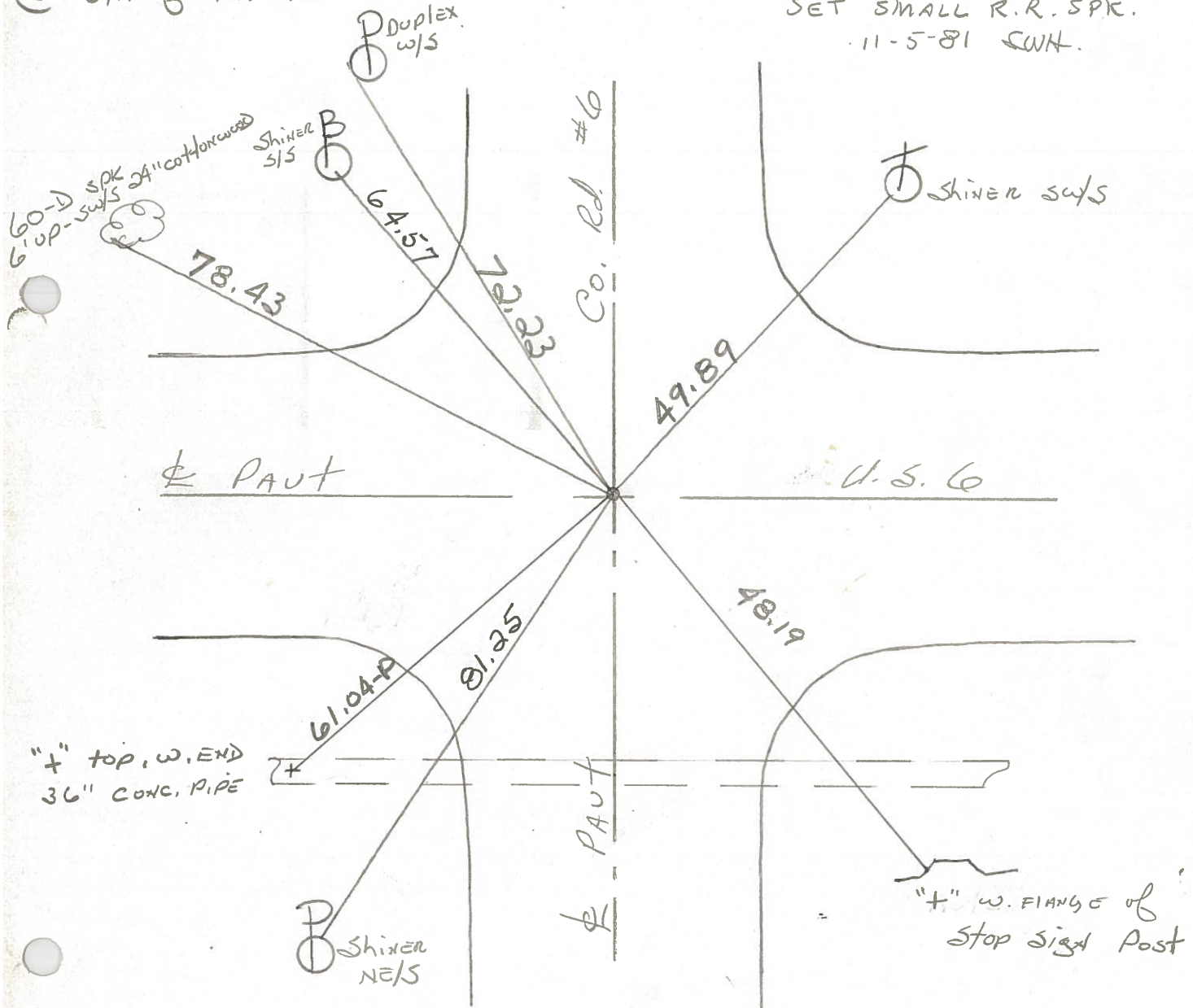
#6



Fd P.K. Nail @ SURFACE
@ ctr. of PAUTS

PROJECT STA ± 266+00

SET SMALL R.R. SPK.
11-5-81 SWH.



P.I. STA. 89+69.31 ~ REC.

PERSONNEL	TITLE	PERSONNEL	TITLE	COUNTY	DATE	WEATHER	TEMP.
Louys				Wi.	9/4/58	Fair.	75°
Wise				S. R. 6			
Krohn				Edgerton E. Corp Line			
Pessefall				SEC. Ta INT x N. RT #2			

DESCRIPTION: Witnesses to Control Points. JOB NO. _____

9.
 (7-A) P.T. - sta. 173+65.94
 3/4" Iron Rod

8.
 P.I. - sta. 157+26.1
 $\Delta = 26^{\circ} - 44' RT.$
 No Record.

7.
 P.C. - sta. 140+24.27
 3/4" Iron Rod

(6-A) P.O.T. - sta. 129+28.65
 No Record.

P.O.T. - sta. 116+09.4
 No Record.

P.O.T. - sta. 102+89.23
 No Record.

(6) 6.
 P.I. - sta. 89+69.31
 $\Delta = 0^{\circ} - 22' Lt.$
 3/4" Sq. Iron Rod

(5-A) 5.
 P.I. - sta. 63+21.50
 $\Delta = 0^{\circ} - 02' Lt.$
 3/4" Iron Rod

