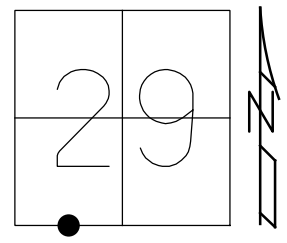


O.D.O.T. DISTRICT 2 SURVEY OFFICE (USE ONLY)

PERSONNEL _____ REFERENCE NO. 14 A SHEET 39 OF 41
 NOTES JAMES DATE 3/1/19 ROUTE US 6
 H.C. O'DONNELL WEATHER SUNNY COUNTY WILLIAMS
 R.C. JAMES TEMP. 27° TOWNSHIP PULASKI
 SECTION 32
 DWG BY NIESE PID 95997 T 6 N R 3 E

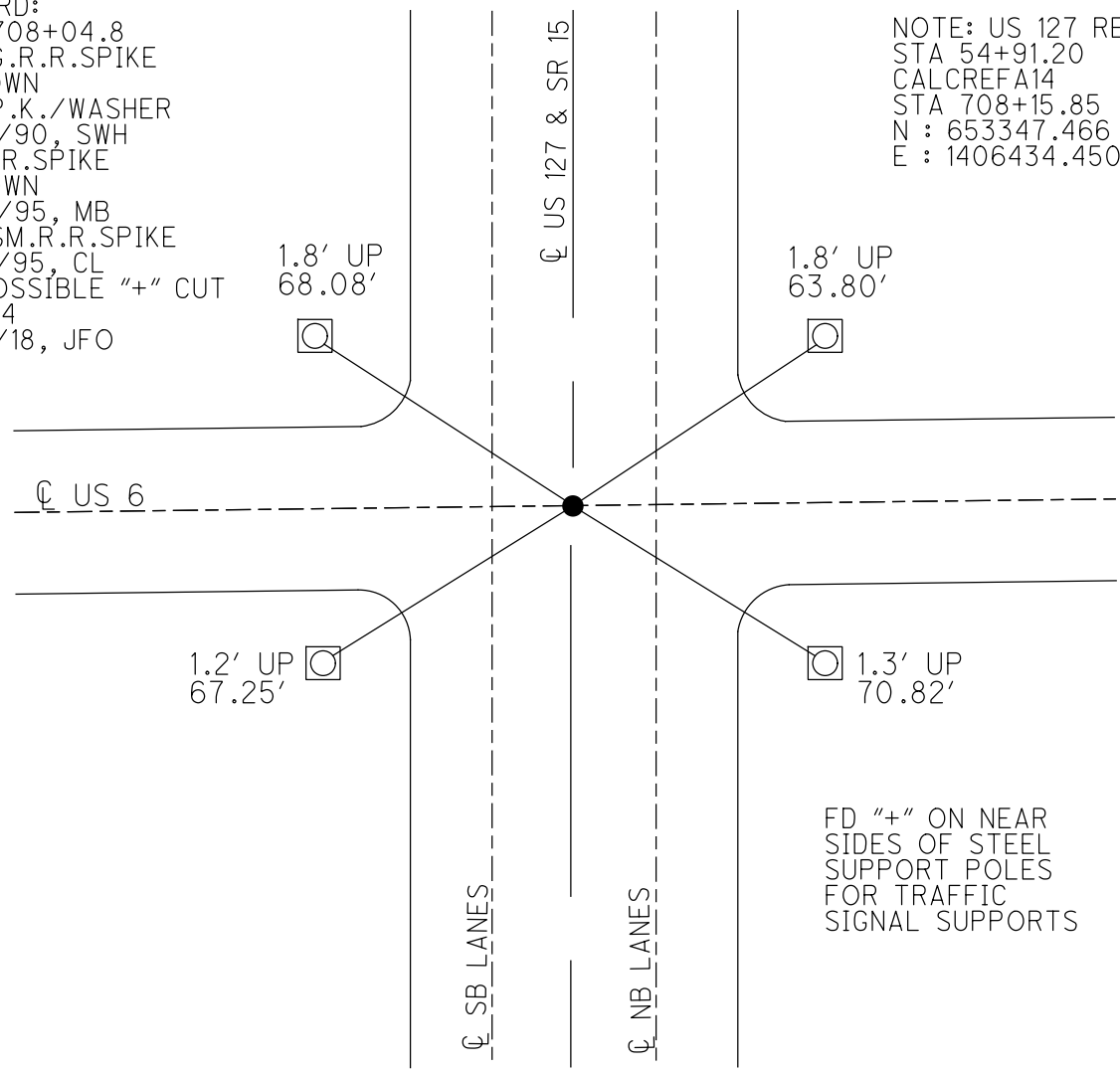
TYPE MONUMENT "+" CUT
 ON SURFACE - ~~BELOW~~ ON
 OFFSET ☉ PAVEMENT ON LT : RT
- TO - EDGE PAVEMENT
 STATION: 708+14.71



HORIZ.DATUM: NAD83 2011 GEOID: NAVD88 2012A
 GRID: NORTHING: 653347.486 EASTING: 1406434.450

RECORD:
 SLM 708+04.8
 FD LG.R.R.SPIKE
 5" DOWN
 SET P.K./WASHER
 12/10/90, SWH
 FD R.R.SPIKE
 2" DOWN
 10/14/95, MB
 SET SM.R.R.SPIKE
 11/23/95, CL
 FD POSSIBLE "+" CUT
 REFA14
 7/25/18, JFO

NOTE: US 127 REF 5A
 STA 54+91.20
 CALCREFA14
 STA 708+15.85
 N : 653347.466
 E : 1406434.450



FD "+" ON NEAR
 SIDES OF STEEL
 SUPPORT POLES
 FOR TRAFFIC
 SIGNAL SUPPORTS

O.D.O.T. DISTRICT 2 SURVEY OFFICE (USE ONLY)

PERSONNEL

REFERENCE NO. 14 A

SHEET 39 OF 41

NOTES HOFFMAN DATE 11/20/95
 H.C. BARNHISEL WEATHER CLOUDY
 R.C. LOEHRKE TEMP. 39°

ROUTE US 6
 COUNTY WILLIAMS
 TOWNSHIP PULASKI
 SECTION 32
 T 6 N R 3 E

DWG BY NIESE PID 102827

TYPE MONUMENT LG.R.R.SPIKE

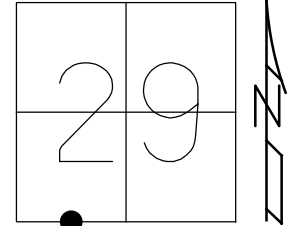
ON SURFACE - ~~BELOW~~ 5"

OFFSET \varnothing PAVEMENT ON ~~LT~~ : ~~RT~~
- TO - EDGE PAVEMENT

STATION: 707+49

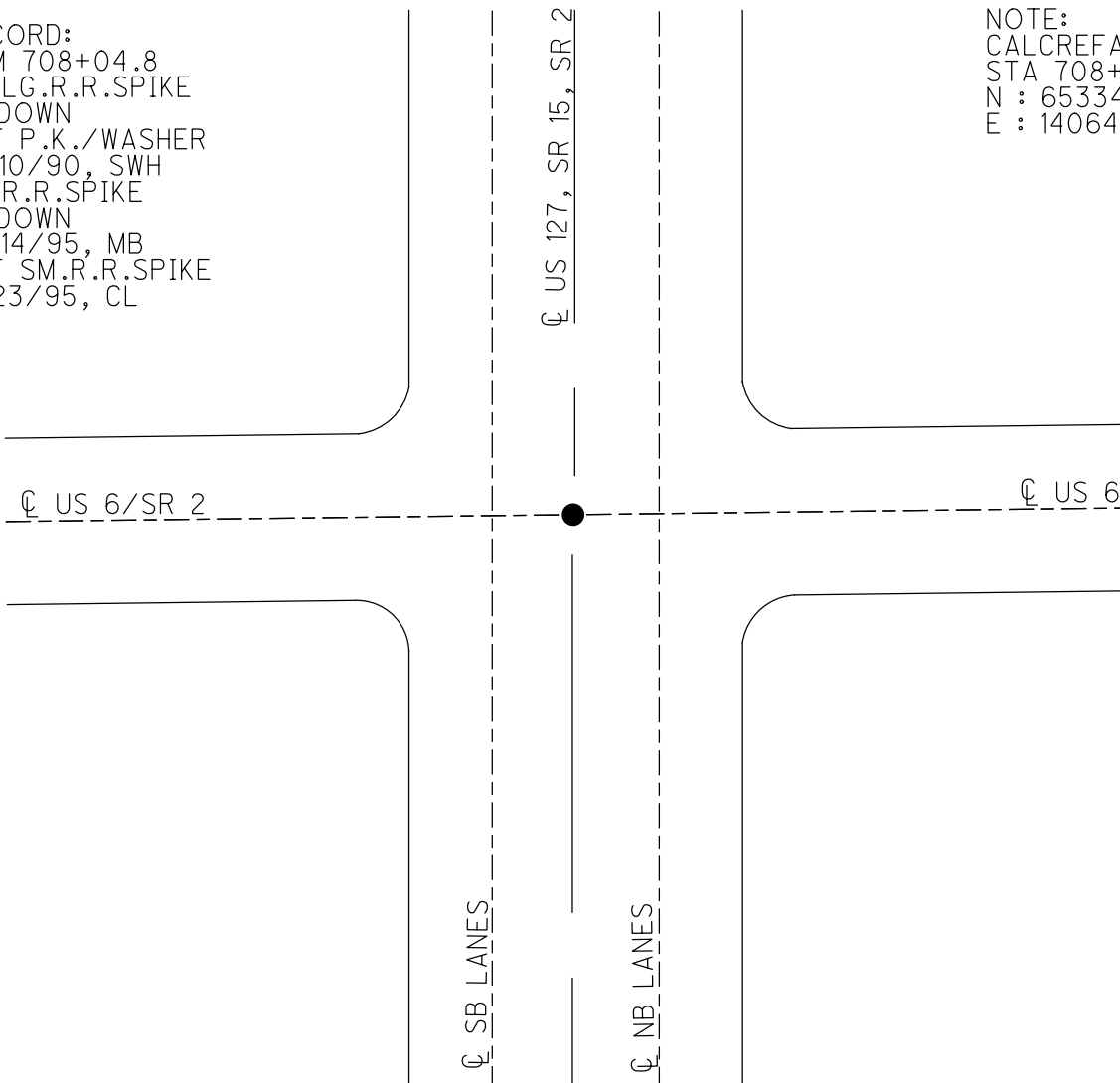
HORIZ.DATUM: - GEOID: -

GRID: NORTHING: - EASTING: -



RECORD:
 SLM 708+04.8
 FD LG.R.R.SPIKE
 5" DOWN
 SET P.K./WASHER
 12/10/90, SWH
 FD R.R.SPIKE
 2" DOWN
 10/14/95, MB
 SET SM.R.R.SPIKE
 11/23/95, CL

NOTE:
 CALCREF A14
 STA 708+15.85
 N : 653347.466
 E : 1406434.450



O.D.O.T. DISTRICT 2 SURVEY OFFICE

PERSONNEL _____

REFERENCE NO. 14-A

SHEET 10 OF 12

NOTES Barnhiset

H.C. Cantebury

R.C. Carder

DATE 11-20-95

WEATHER Cloudy

TEMP. +39°F

ROUTE US 6

COUNTY Williams

TOWNSHIP Pulaski

SECTION 29

T 6 N 3 E 1

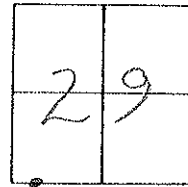
TYPE MONUMENT Lg. RR spk

ON SURFACE - BELOW 5"

LEFT - ☉ PAV'T. - RIGHT ☉

TO EDGE PAVEMENT

S.L.M. 707+49



RECORD:

T2ulog: 708+36.48

S.L.M. = 708+04.8

RECORD 12-16-90:

Dug Down 5" To Concrete

Find Lg RR spk.

SET PK/WASHER @ SURFACE
SWH

ALL TIES DESTROYED
 SOME ONE HAS CUT "+"
 IN NEW CONCRETE
 INTERSECTION

U.S. 127, SR. 15
 SR. 2

☉ Pav't US 6 + SR 2

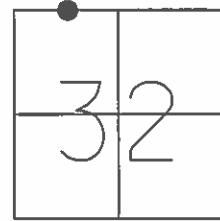
US 6

☉ Pav't:

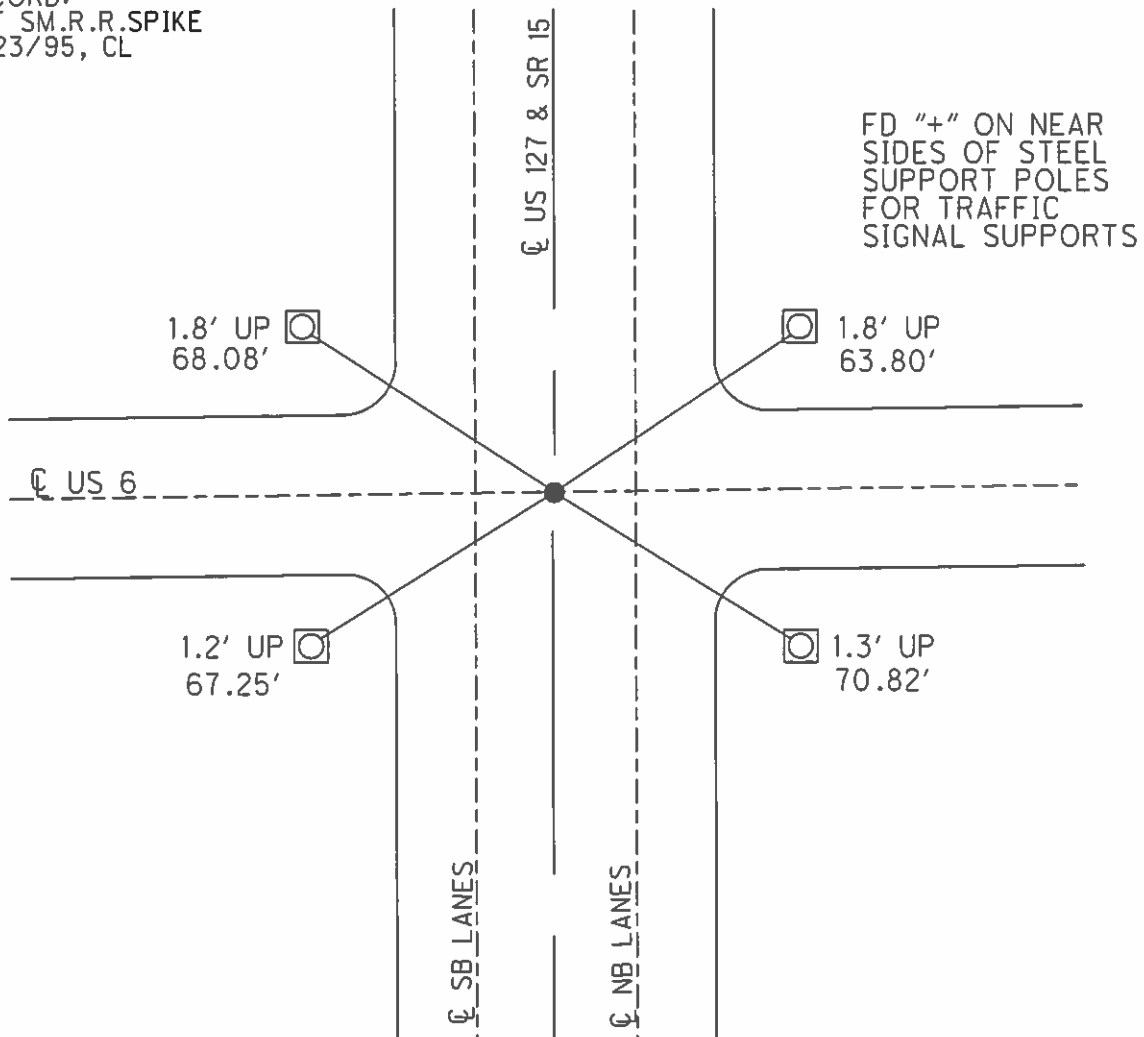
O.D.O.T. DISTRICT 2 SURVEY OFFICE (USE ONLY)

PERSONNEL _____ REFERENCE NO. 5 A SHEET 6 OF 9
 NOTES HOFFMAN DATE 10/14/95 ROUTE US 127
 H.C. BARNHISEL WEATHER CLEAR COUNTY WILLIAMS
 R.C. LOEHRKE TEMP. 46° TOWNSHIP PULASKI
 SECTION 32
T 6 N R 3 E

TYPE MONUMENT R.R.SPIKE
 ON SURFACE - ~~BELOW~~ 2"
 LEFT - ☉ PAV'T - RIGHT ON
- TO - EDGE PAVEMENT
 S.L.M. 54+91.20, US 6 707+49
 GRID: NORTHING: - EASTING: -



RECORD:
 SET SM.R.R.SPIKE
 11/23/95, CL



O.D.O.T. DISTRICT 2 SURVEY OFFICE

PERSONNEL

REFERENCE NO. 14-A SHEET 10 OF 11

NOTES BARNHISEL

H.C. CANTERBURY

R.C. CORDS

DATE 11-20-95

WEATHER cloudy

TEMP. +4° C

ROUTE U.S. 6

COUNTY Williams

TOWNSHIP Pulaski

SECTION 29

T 6 N R 3 E

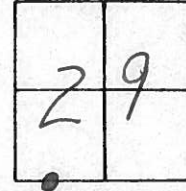
TYPE MONUMENT Lg RR Spk

~~ON~~ SURFACE - BELOW 12.70 cm

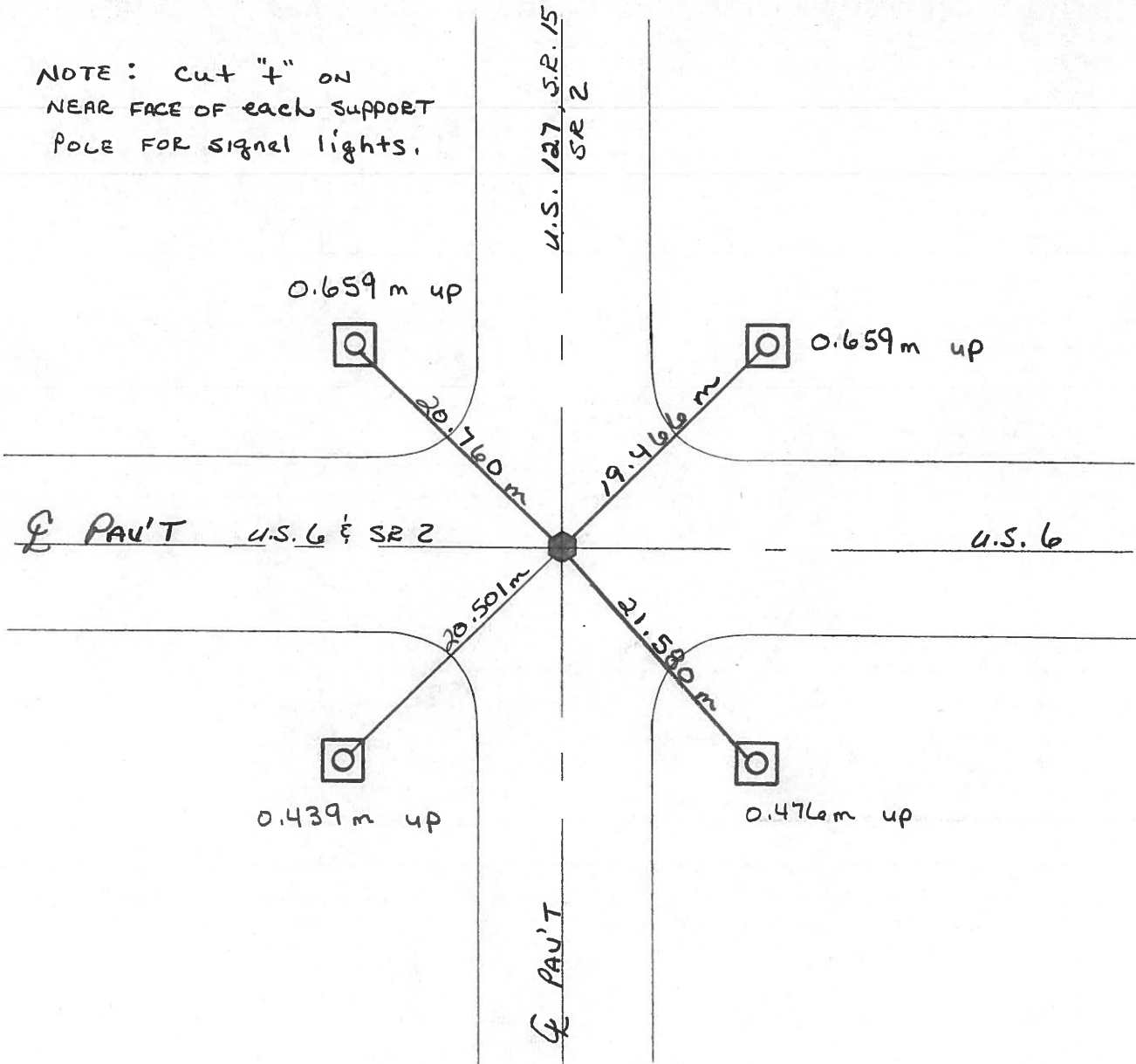
~~SEE~~ - E PAV'T. - ~~RIGHT~~ yes

- TO - EDGE PAVEMENT

S.L.M. 21+563.752



NOTE: cut "f" on
NEAR FACE OF EACH SUPPORT
POLE FOR signal lights.



O.D.O.T. DISTRICT 2 SURVEY OFFICE

PERSONNEL _____

REFERENCE NO. 14-A

SHEET _____ OF _____

NOTES BARNHISEL

H.C. CANTERBURY

R.C. CORDOES

DATE 11-17-95

WEATHER SNOW

TEMP. +0° C

ROUTE U.S. 6

COUNTY Williams

TOWNSHIP PULASKI

SECTION 29

T. 6 N. R. 3 E

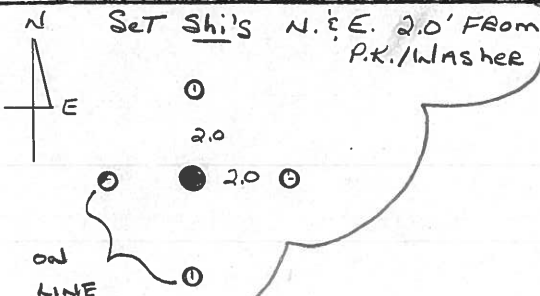
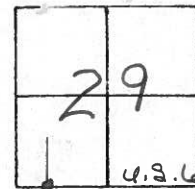
TYPE MONUMENT P.K. / WASHER

ON SURFACE - BELOW 12.70 cm

~~SET~~ - PAV'T. - ~~PAV'T.~~ YES

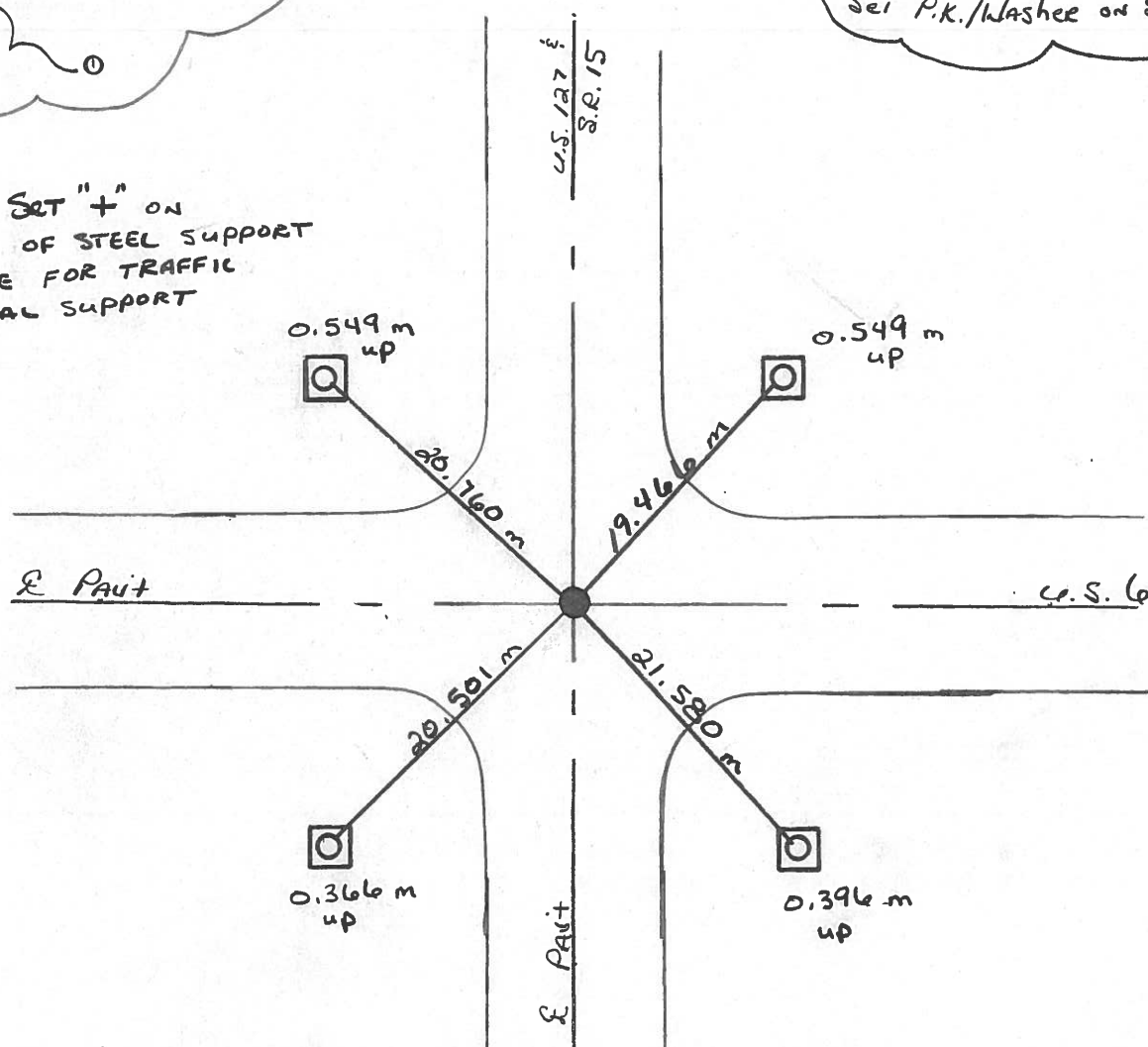
TO EDGE PAVEMENT

S.L.M. 708+10.12 / SLK: 21+563



12-10-90
Dug Down To Concrete,
Fd Lg. RR Spk 5" down.
Set P.K. / Washer on SURFACE

NOTE: SET "+" ON FACE OF STEEL SUPPORT POLE FOR TRAFFIC SIGNAL SUPPORT



O.D.O.T. DISTRICT 2 SURVEY OFFICE

PERSONNEL _____

REFERENCE NO. 14-A

SHEET _____ OF _____

NOTES HOFFMAN

H.C. BARNHISEL

DATE 10-14-88

ROUTE US 6

R.C. LOEHRKE

WEATHER CLEAR

COUNTY Williams

TEMP. 46°

TOWNSHIP PULASKI

SECTION 32

T 6 N R 3 E

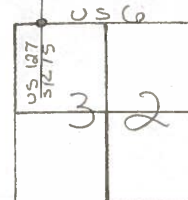
TYPE MONUMENT R.R. SPIKE

ON SURFACE - BELOW 2"

LEFT- & PAV'T. - RIGHT YES

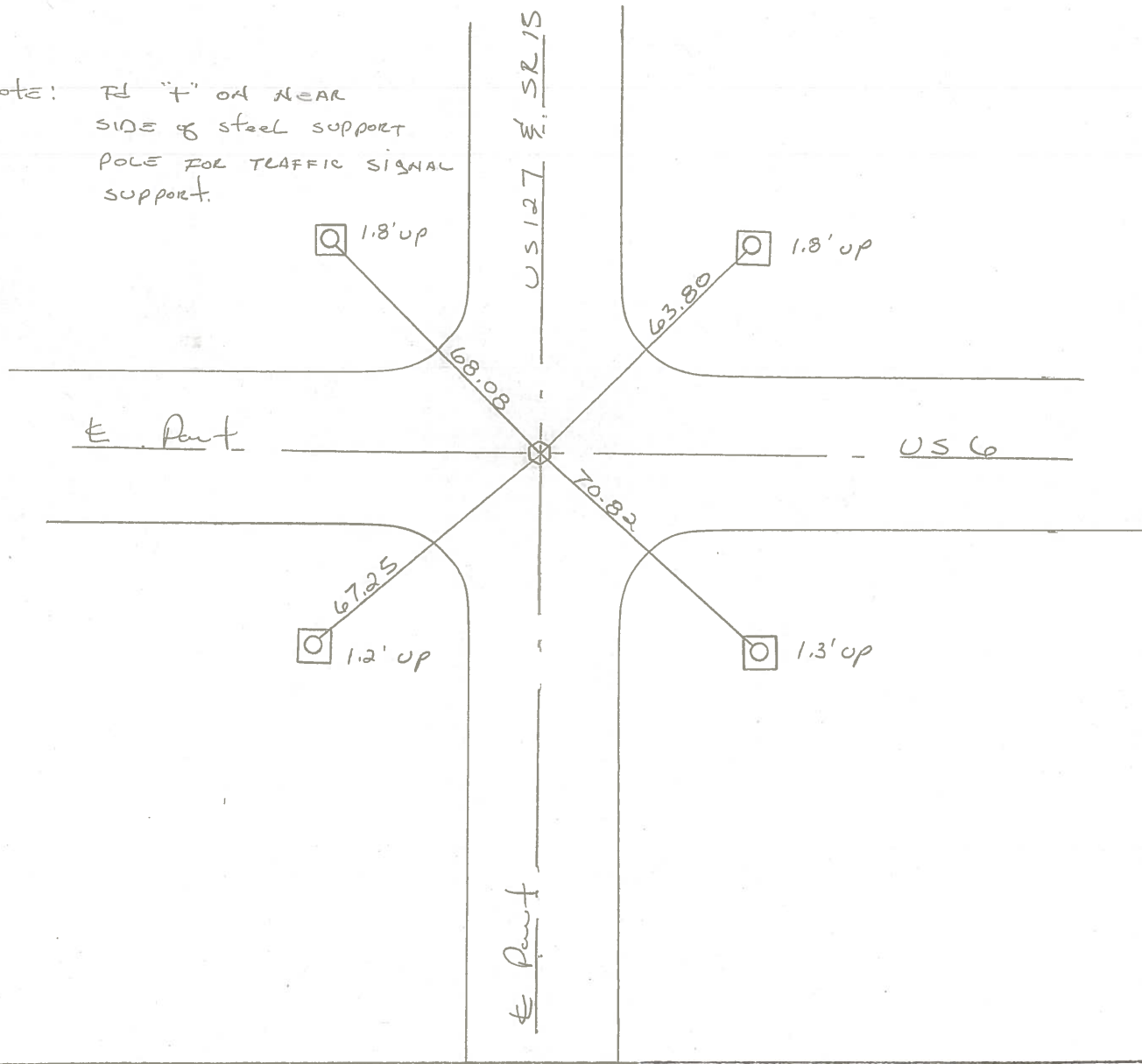
TO EDGE PAVEMENT

S.L.M. 707+49



Set SMALL RR SPIKE
11-23-88 SWH

Note: PL "T" ON NEAR
SIDE of steel support
POLE FOR TRAFFIC SIGNAL
support.



O.D.O.T. DISTRICT 2 SURVEY OFFICE

PERSONNEL

REFERENCE NO. 15

SHEET OF

NOTES Hoffman

H.C. Barnhisel

DATE 7-24-86

ROUTE US6 @ US127

R.C. Loehrke

WEATHER Clear

COUNTY Williams

TEMP. 85°

TOWNSHIP Palaski

SECTION 32

T6 N R 3 E

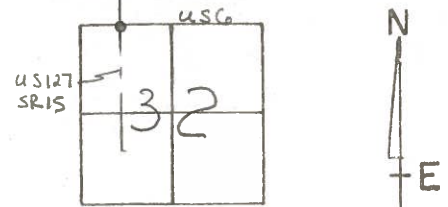
TYPE MONUMENT SMALL RR SPK

ON SURFACE - ~~BELOW~~ yes

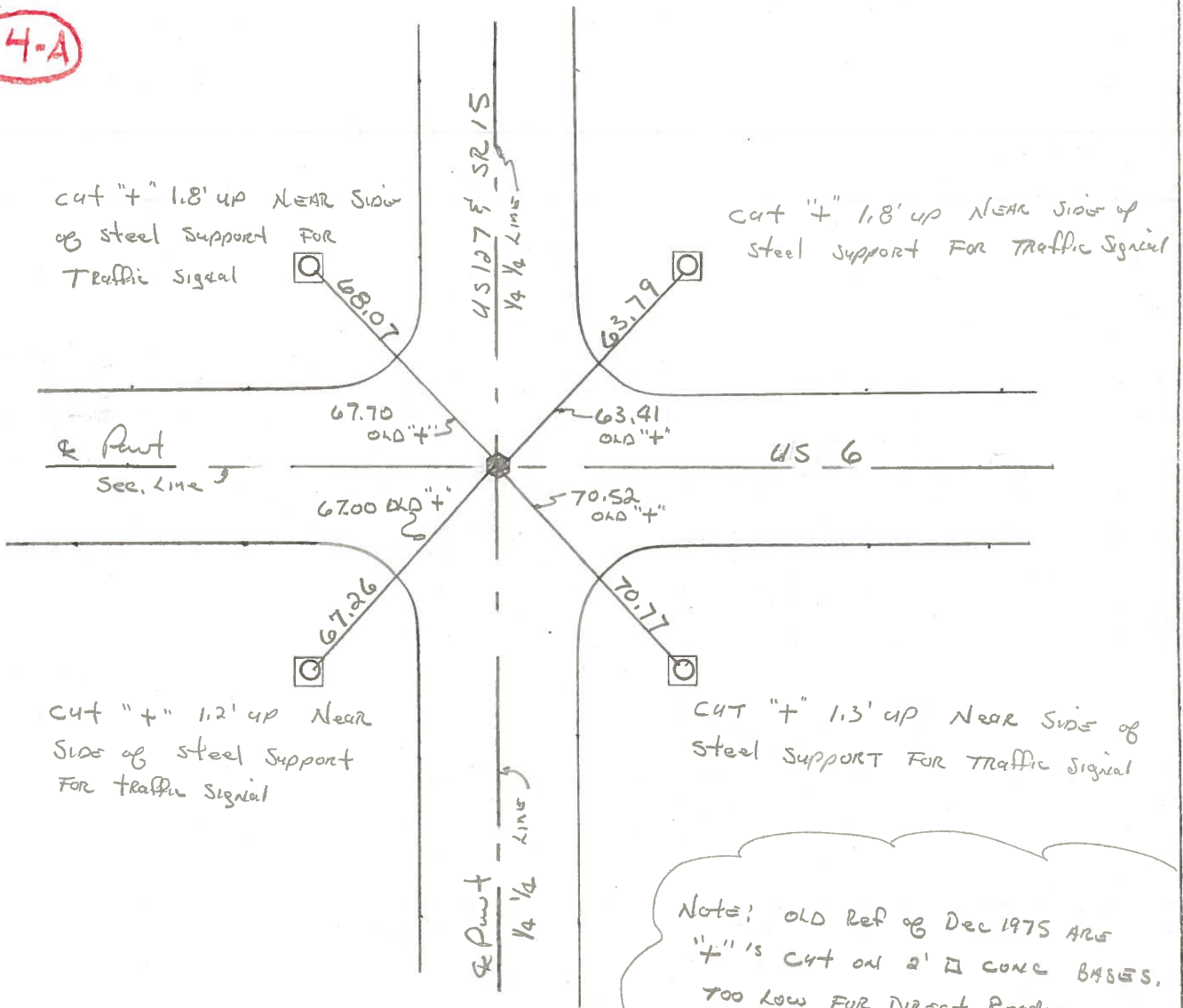
~~LEFT - & PAW'T. - RIGHT~~ yes - Both Paws

 TO EDGE PAVEMENT

S.L.M. US 6 = 708 + 04.8' US 127 = 54 + 91.2



14-A



Note: OLD Ref of Dec 1975 ARE " + " IS CUT ON 2' x 2' CONC BASES, TOO LOW FOR DIRECT READING.

PERSONNEL TITLE PERSONNEL TITLE

Red Beach
W. KNAPE

COUNTY Williams DATE Dec. 1975

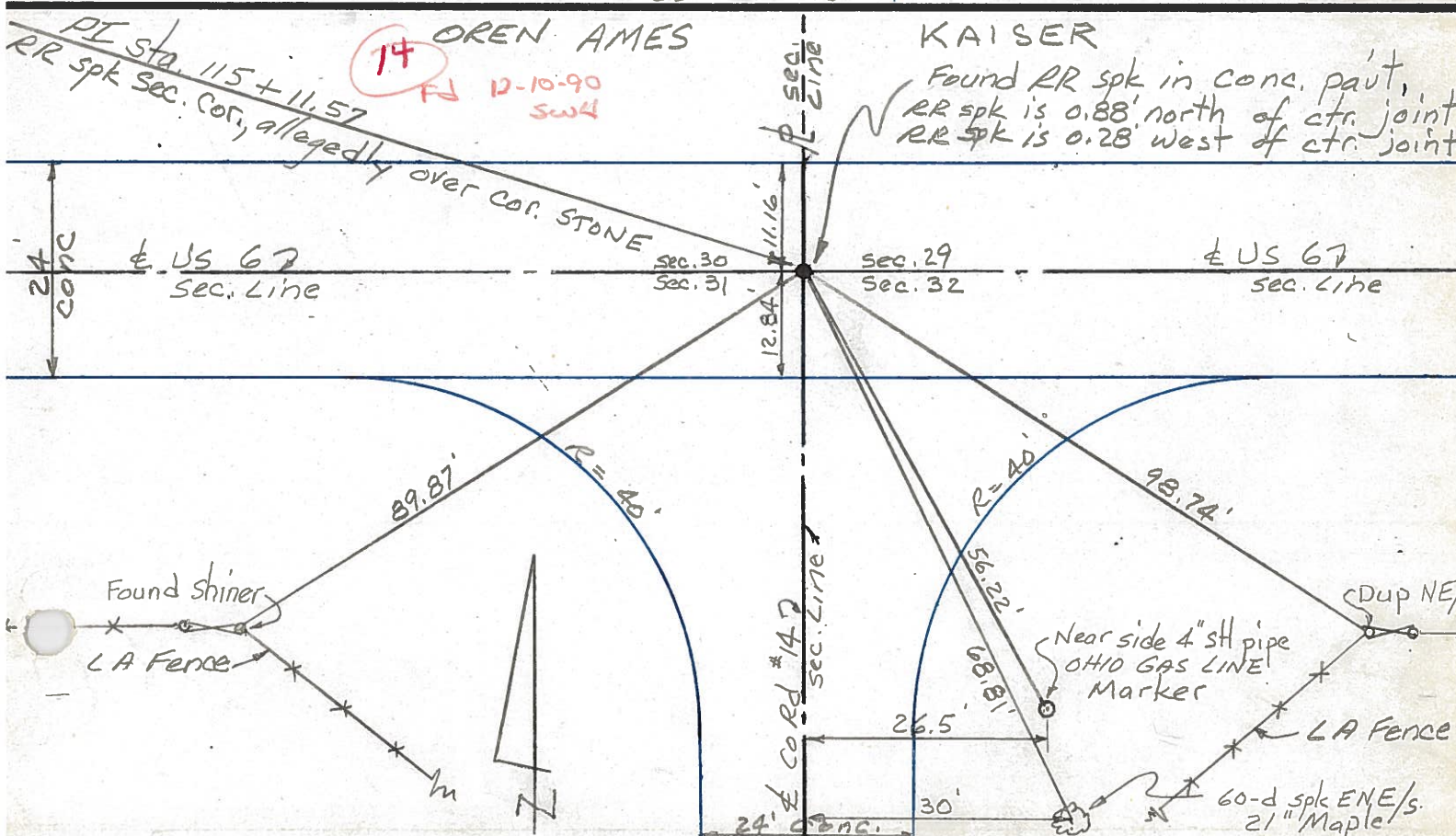
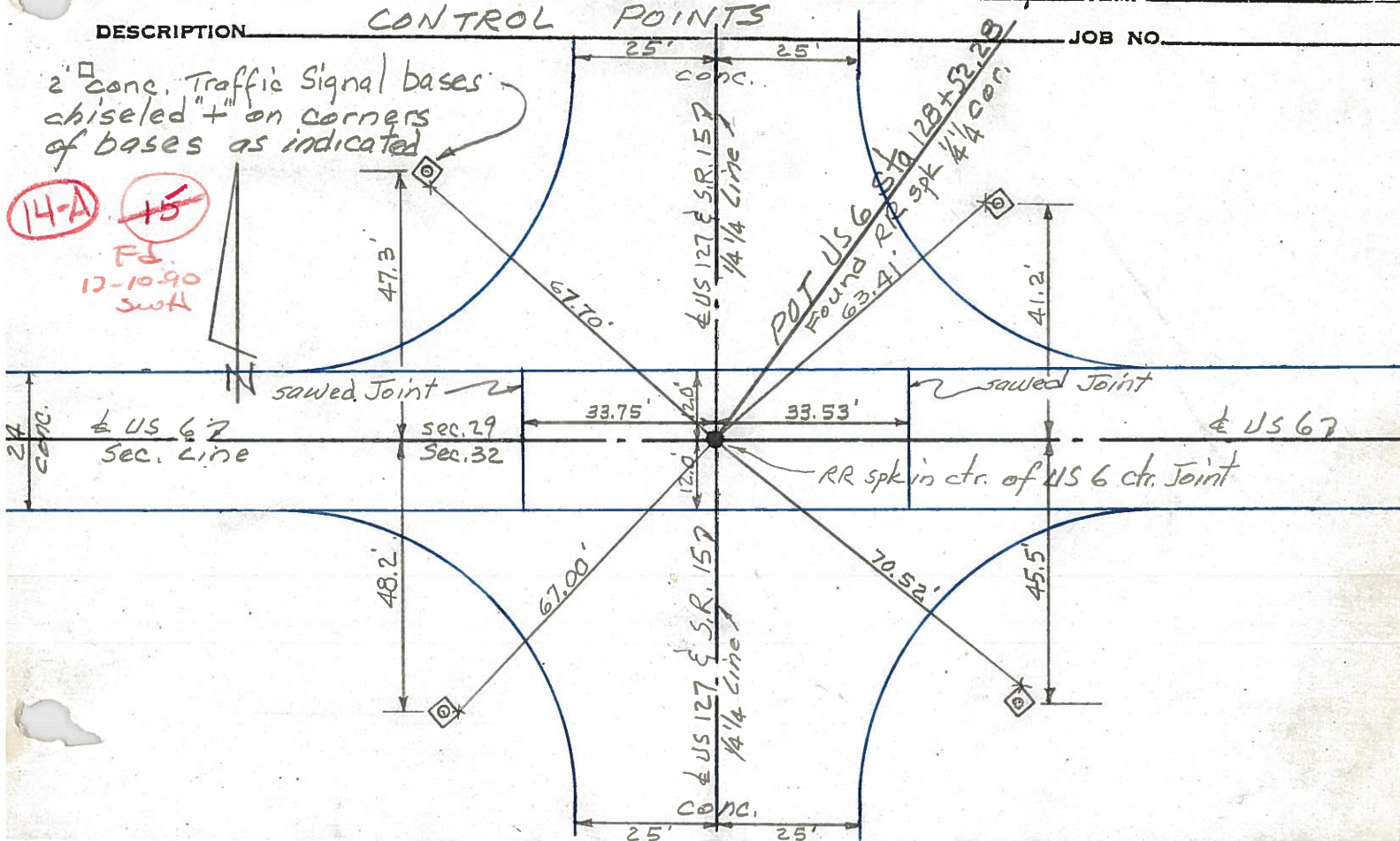
S. R. US 6 WEATHER

SEC. Pulaski Twp TEMP

DESCRIPTION CONTROL POINTS JOB NO.

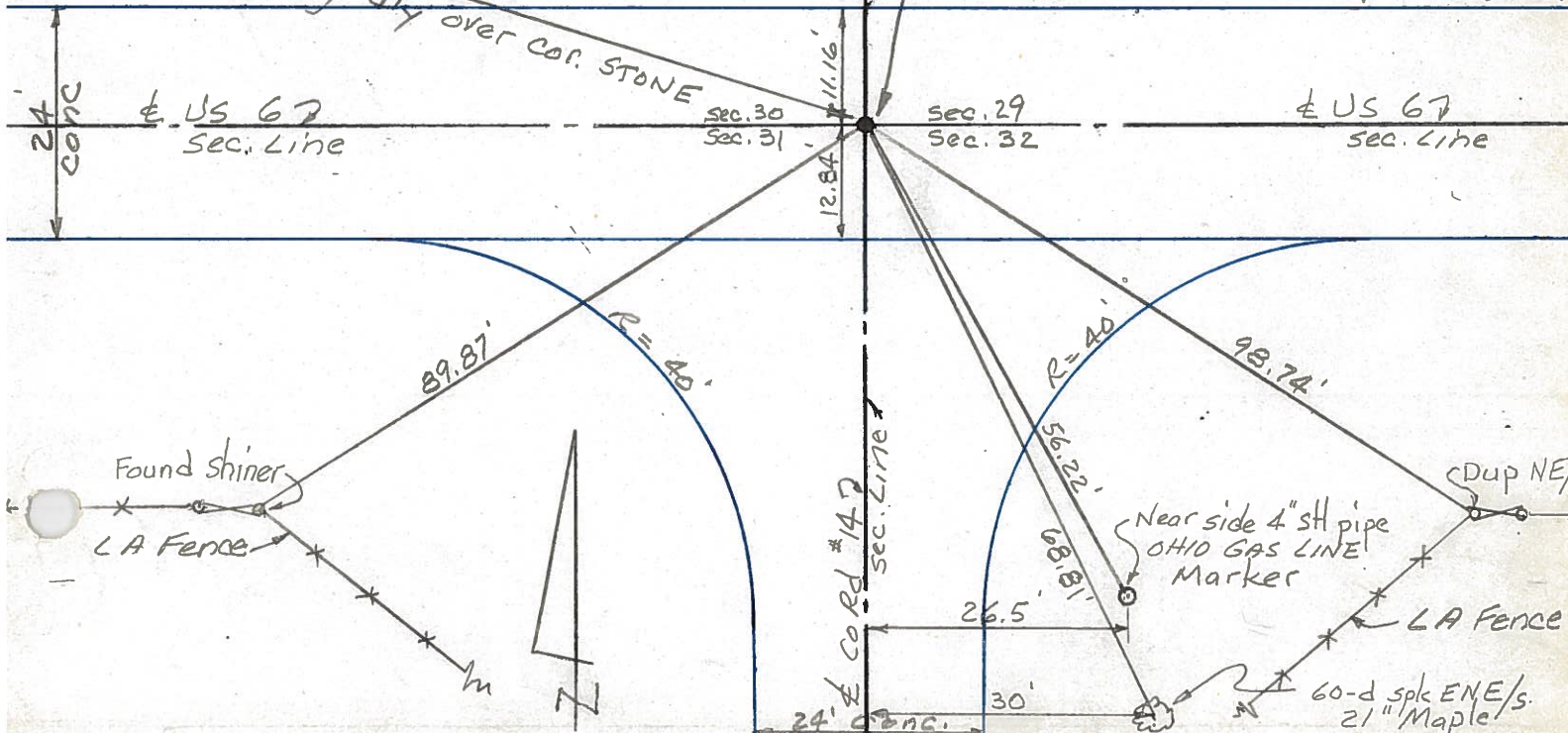
2' cone. Traffic Signal bases
chiseled "+" on corners
of bases as indicated

14-A 15
FD 12-10-90
SW4



14 OREN AMES
FD 12-10-90
SW4

KAISER
Found RR spk in conc. part,
RR spk is 0.88' north of ctr. joint
RR spk is 0.28' west of ctr. joint



PERSONNEL	TITLE	PERSONNEL	TITLE
Hoover		Mohler	
Ruffer			
Delventhal			
Young			

COUNTY Williams DATE 12-7-60

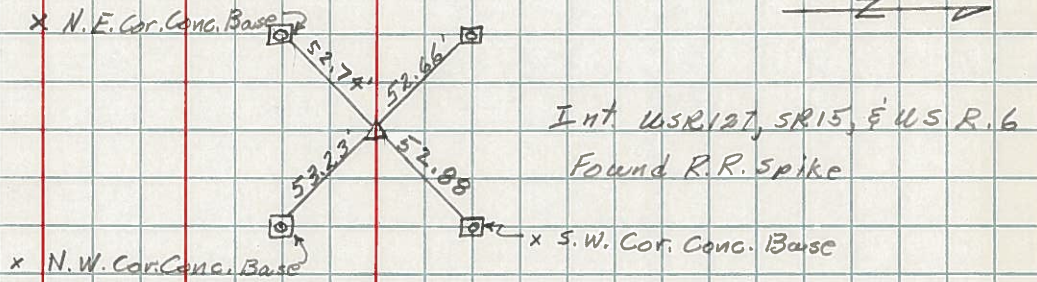
S. R. 6 WEATHER Partly Cloudy

SEC. _____ TEMP. 28°

DESCRIPTION _____ LEFT _____ CENTER LINE _____ RIGHT _____ JOB NO. _____

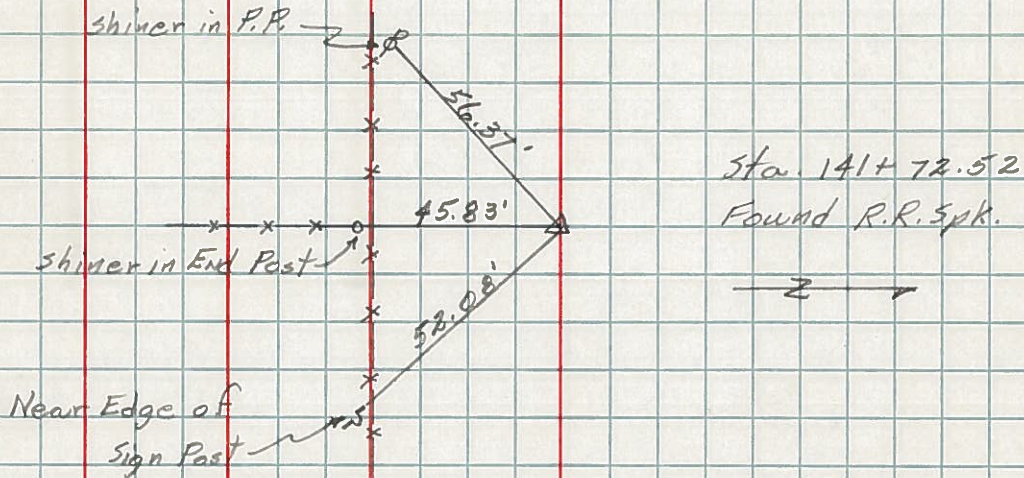
110.

(14-A)



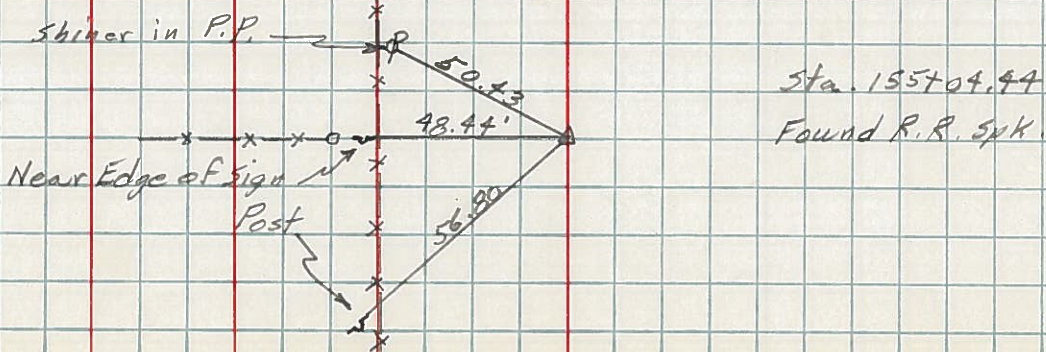
111.

(15)



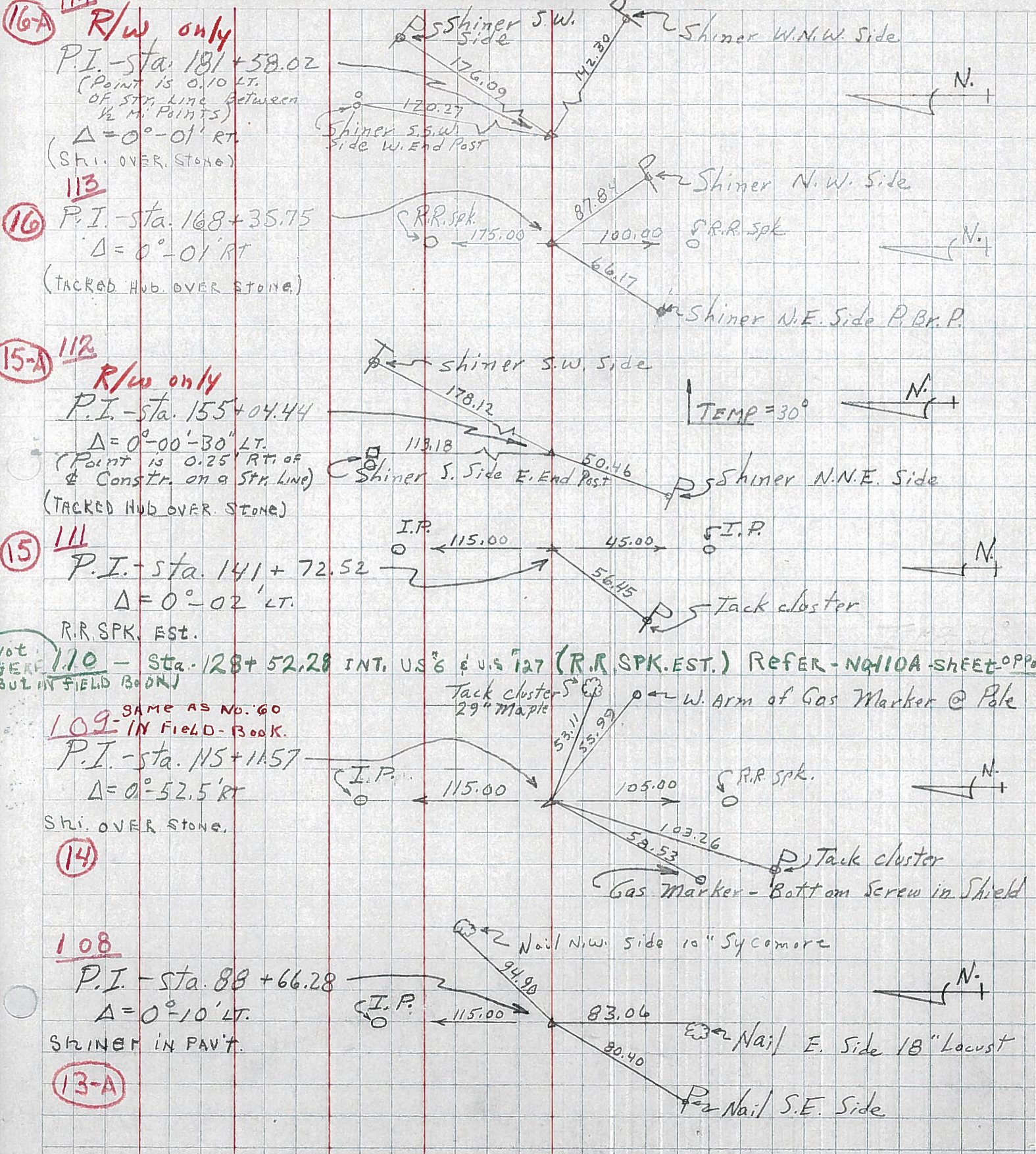
112.

(15-A)



PERSONNEL TITLE PERSONNEL TITLE COUNTY Wi. DATE 2-7-58
 Louys _____ S. R. 6 WEATHER _____
 SEC Relocation over Rt. #384 TEMP. 20°

DESCRIPTION Witnesses To Control Points JOB NO. _____



114
16-A R/w only
 P.I. - sta. 181 + 58.02
 (Point is 0.10 LT. OF STR. LINE BETWEEN 1/2 MI. POINTS)
 $\Delta = 0^\circ - 01' RT.$
 (SHI. OVER STONE)

113
16 P.I. - sta. 168 + 35.75
 $\Delta = 0^\circ - 01' RT.$
 (TACKED HUB OVER STONE)

112
15-A R/w only
 P.I. - sta. 155 + 04.44
 $\Delta = 0^\circ - 00' - 30'' LT.$
 (Point is 0.25' RT. OF & CONST. ON A STR. LINE)
 (TACKED HUB OVER STONE)

111
15 P.I. - sta. 141 + 72.52
 $\Delta = 0^\circ - 02' LT.$
 R.R. SPK. EST.

110 - Sta. 128 + 52.28 INT. US 6 & US 127 (R.R. SPK. EST.) REFER - NQ110A - SHEET OPP. BUT IN FIELD BOOK

109 - SAME AS No. 60 IN FIELD-BOOK.
 P.I. - sta. 115 + 11.57
 $\Delta = 0^\circ - 52.5' RT.$
 SHI. OVER STONE.

14

108
 P.I. - sta. 88 + 66.28
 $\Delta = 0^\circ - 10' LT.$
 SHINER IN PAVT.

13-A

PERSONNEL TITLE PERSONNEL TITLE

TEWART.

COUNTY WILLIAMS.

DATE 10-9-56
COPIED 5-26-67

6

S. R. _____ WEATHER _____

SEC. Relocation-over Rt. 384 TEMP. _____

DESCRIPTION Witnesses To Control Points JOB NO. _____

