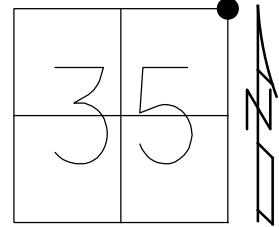


O.D.O.T. DISTRICT 2 SURVEY OFFICE (USE ONLY)

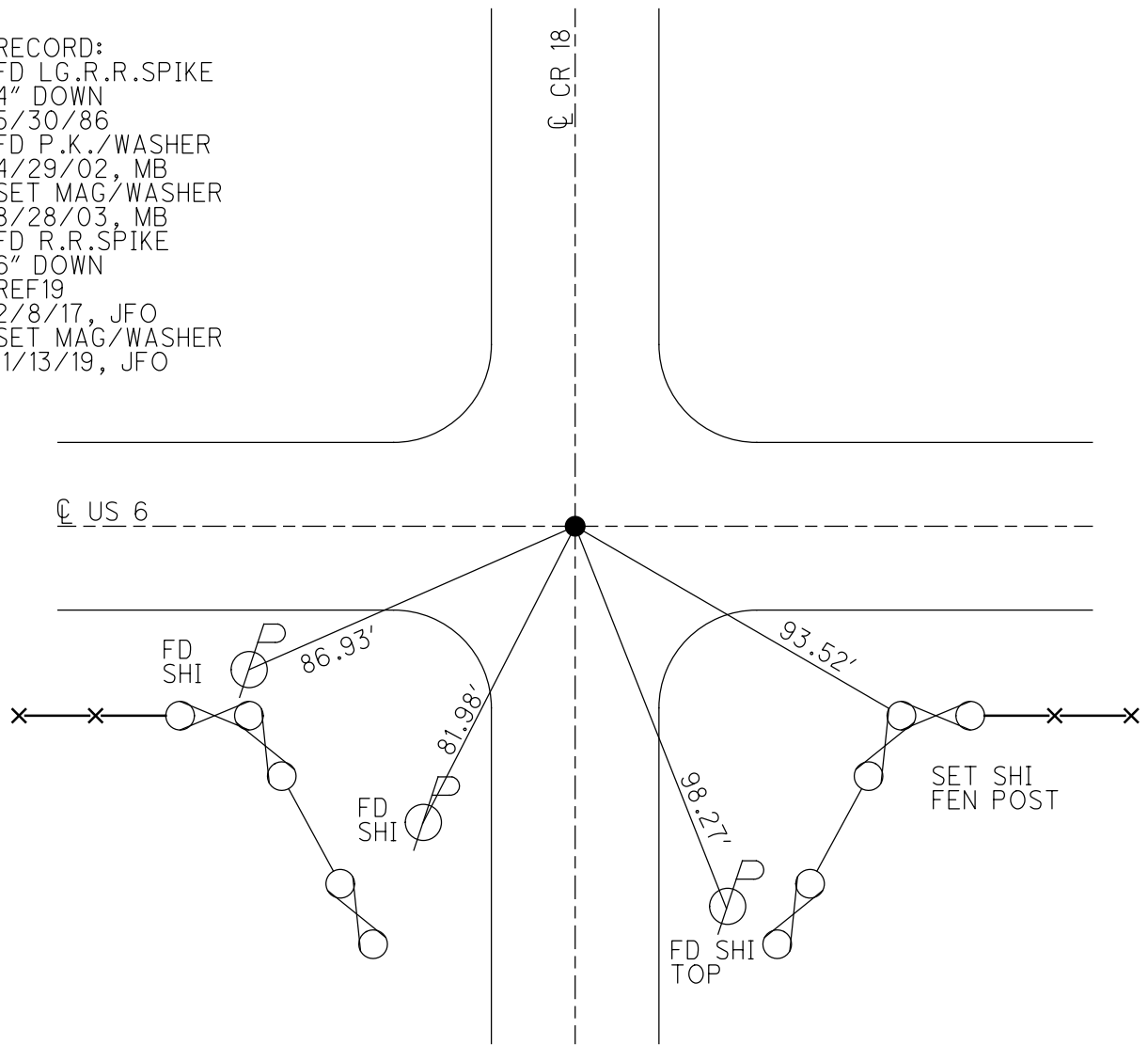
PERSONNEL _____ REFERENCE NO. 19 SHEET 11 OF 19
 NOTES O'DONNELL DATE 8/29/19 ROUTE US 6
 H.C. LEU WEATHER SUNNY COUNTY WILLIAMS
 R.C. NIESE TEMP. 74° TOWNSHIP PULASKI
 DWG BY NIESE PID 95792 SECTION 35
 T 6 N R 3 E

TYPE MONUMENT R.R.SPIKE
~~ON SURFACE~~ - BELOW 5"
 OFFSET Q PAVEMENT ON LT : RT
- TO - EDGE PAVEMENT
 STATION: 907+06.59



HORZ.DATUM: NAD83(2011) GEOID: 2012A
 GRID: NORTHING: 652849.065 EASTING: 1426216.488

RECORD:
 FD LG.R.R.SPIKE
 4" DOWN
 5/30/86
 FD P.K./WASHER
 4/29/02, MB
 SET MAG/WASHER
 8/28/03, MB
 FD R.R.SPIKE
 6" DOWN
 REF19
 2/8/17, JFO
 SET MAG/WASHER
 11/13/19, JFO



O.D.O.T. DISTRICT 2 SURVEY OFFICE

PERSONNEL

REFERENCE NO. 19

SHEET 11 OF 20

NOTES Barnhisel

H.C. Centerbury

R.C. Moser

DATE 4-29-02

WEATHER Rain

TEMP. +45°

ROUTE U.S. 60

COUNTY WILLIAMS

TOWNSHIP PULASKI

SECTION 35

T 6 N R 3 E

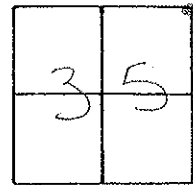
TYPE MONUMENT PK + Washer

ON SURFACE - BELOW ON surface

~~LEFT~~ - ℄ PAV'T. - RIGHT

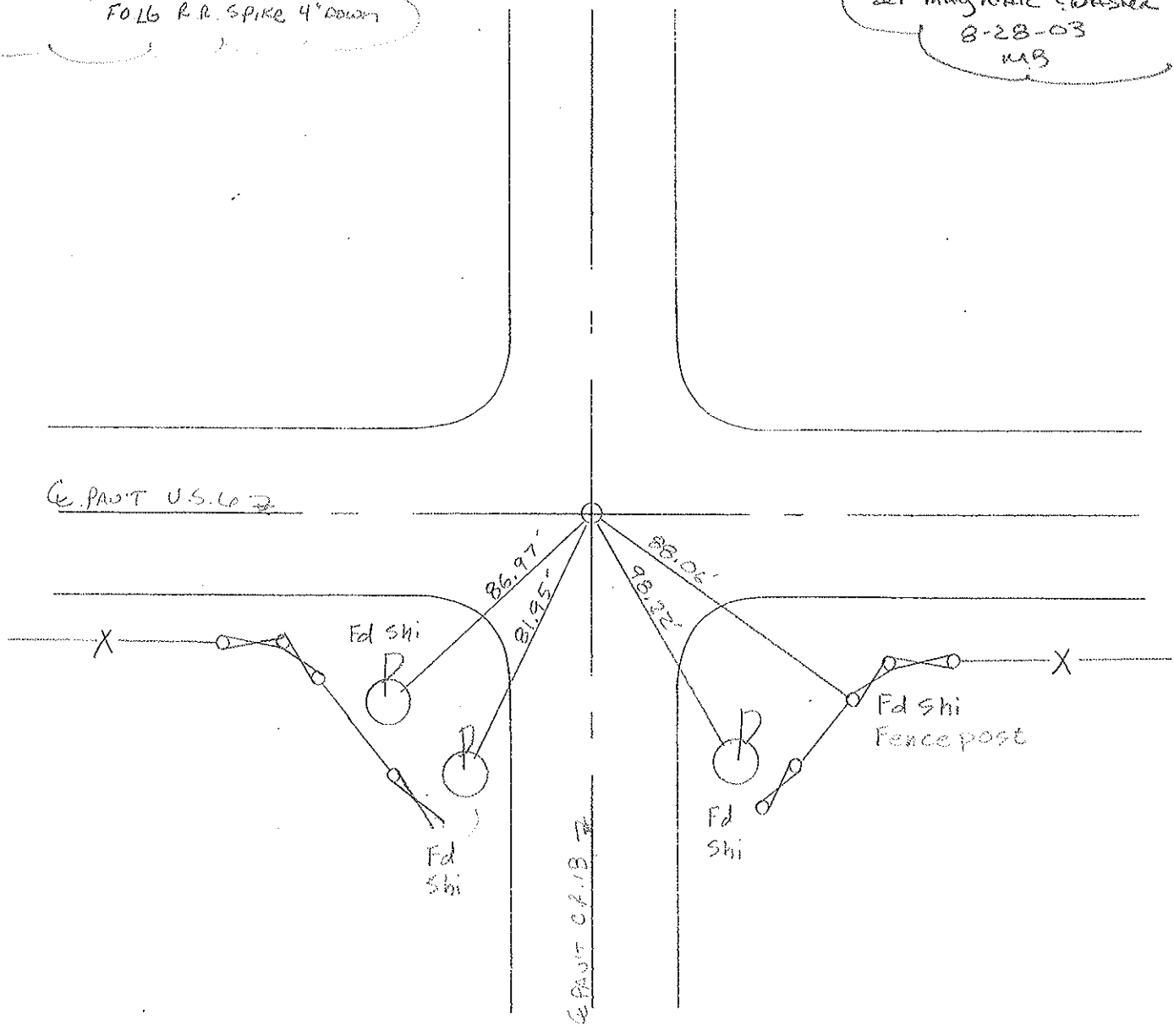
TO EDGE PAVEMENT ON ℄ BOTH

S.L.M. 907+66



RECORD: 5-30-80
FOLB R.R. SPIKE 4' DOWN

SET mag nail & washer
8-28-03
MB



O.D.O.T. DISTRICT 2 SURVEY OFFICE

PERSONNEL

REFERENCE NO. 19

SHEET 12 OF 22

NOTES VAN DUSEN

H.C. KUSZ

R.C. MCCORMICK

DATE 20 July 1992

WEATHER OVERCAST

TEMP. 77°

ROUTE US 6

COUNTY Williams

TOWNSHIP Pulaski

SECTION 25, 26, 35, 36

T 6 N R 3 E

TYPE MONUMENT PK & WASHER

ON SURFACE - ~~BELOW~~ YES

~~LEFT - & PAV'T. - RIGHT~~ YES

12.2 TO RT EDGE PAVEMENT

S.L.M. 907+66

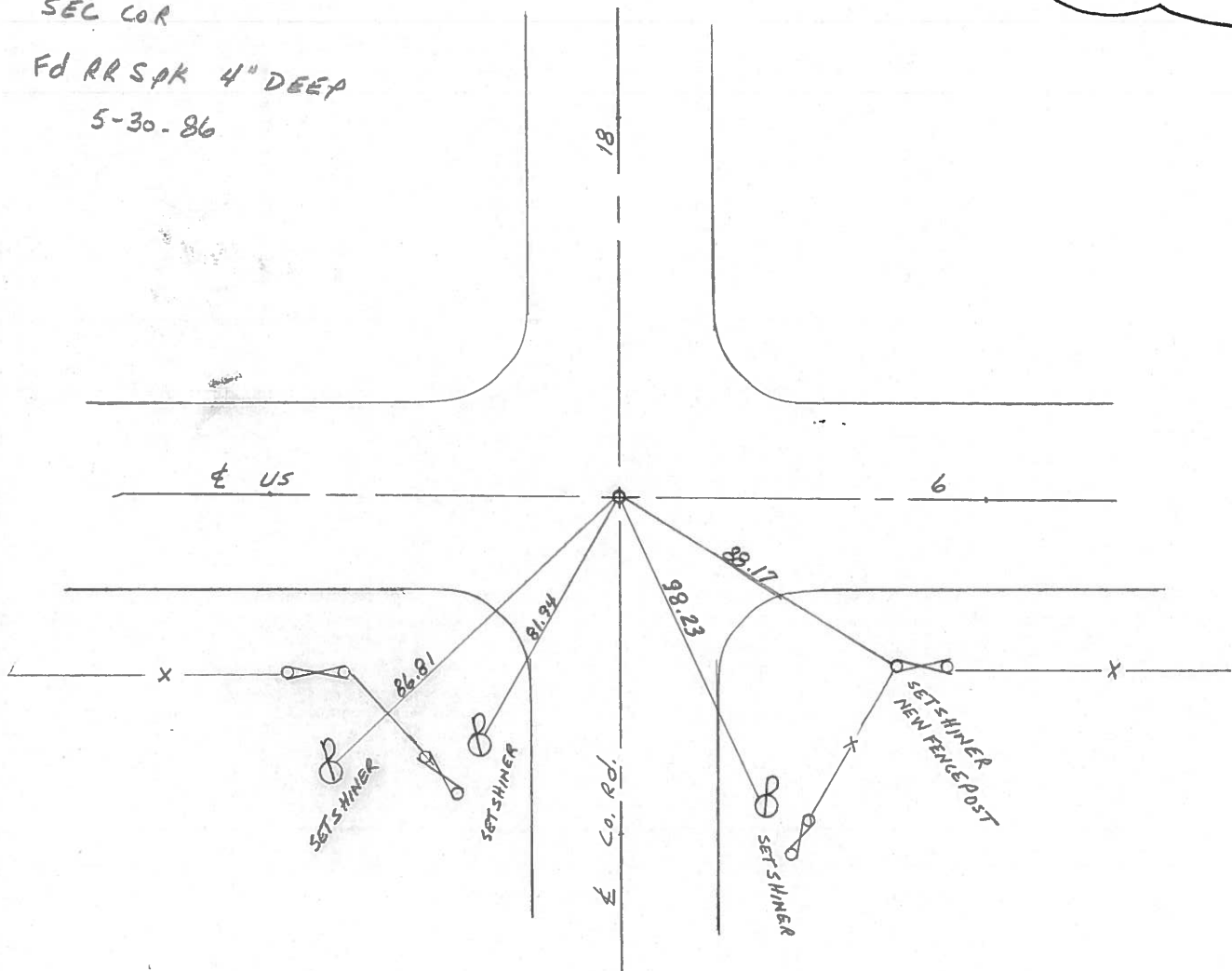
26	25
35	36



Fd. RR. SPK IN CENTER
OF 24' CONC. PVMT.
SEC COR

Fd RR SPK 4" DEEP
5-30-86

SET PK & WASHER
10-26-92
MB



County Wilkes S.R. #6

Date 7 May 89

Township Polaski

Weather Cloudy

Section 25-26-35-36

Temp. 61°

T N, R E

Personnel L. Stone

P. Newser

R. Michalak

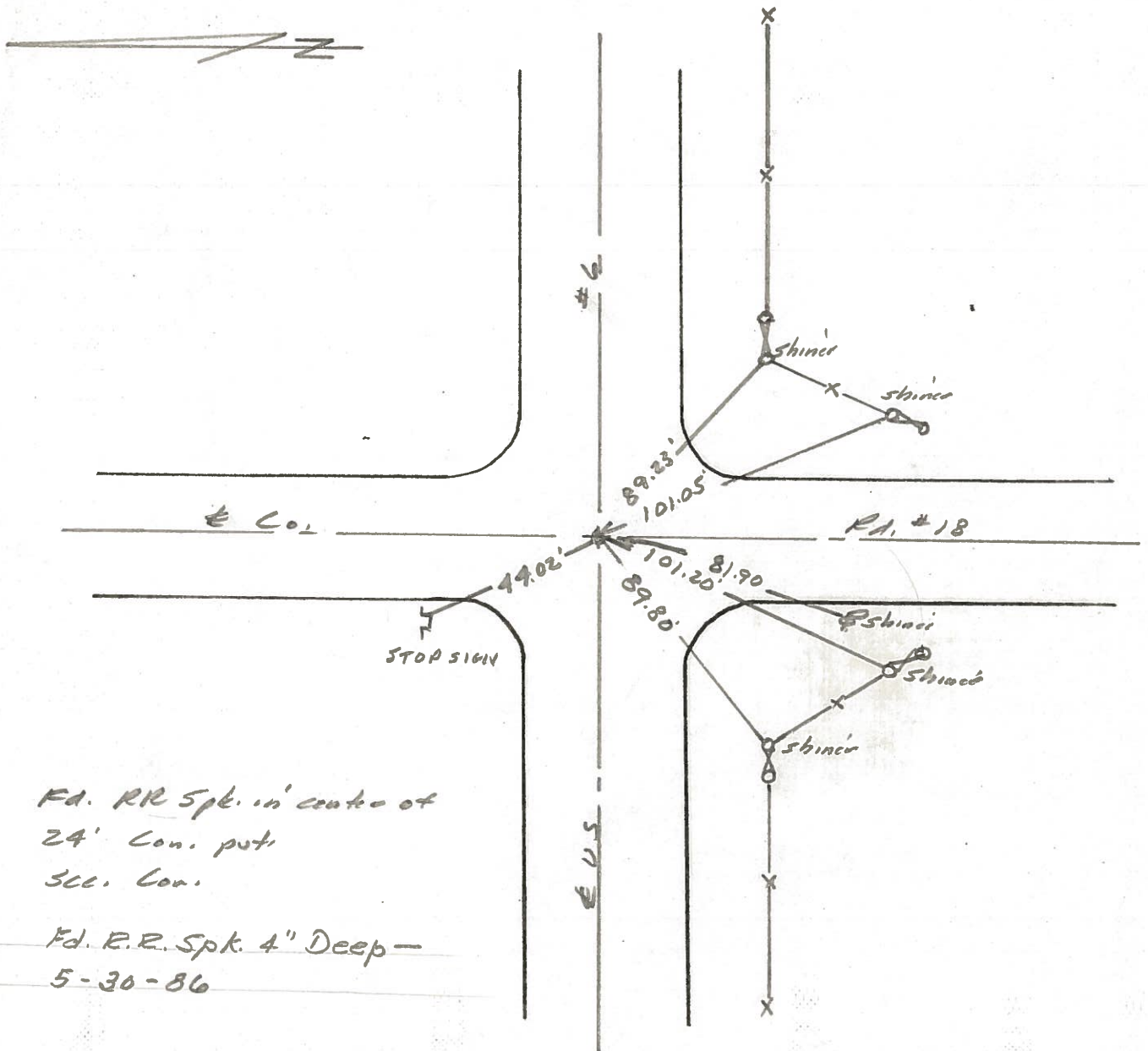
J. Guedis

26	25
35	36



906+72±

REF. NO. 19



Fd. RR Spk. in center of
24' Con. patch
3cc. Con.

Fd. R.R. Spk. 4" Deep -
5-30-86

PERSONNEL TITLE PERSONNEL TITLE

Red Beach
W. Knape

COUNTY Williams DATE 26 Nov 1975

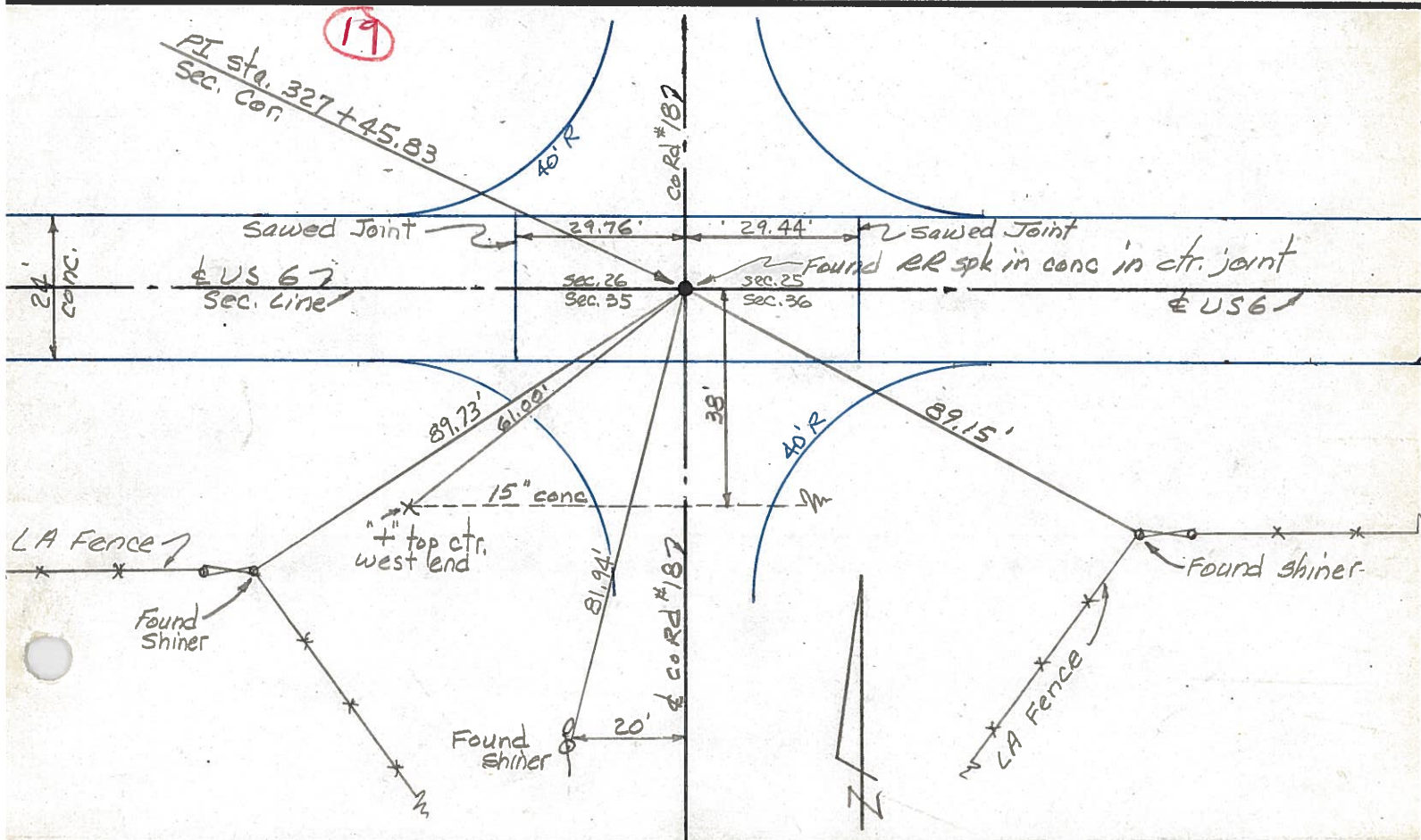
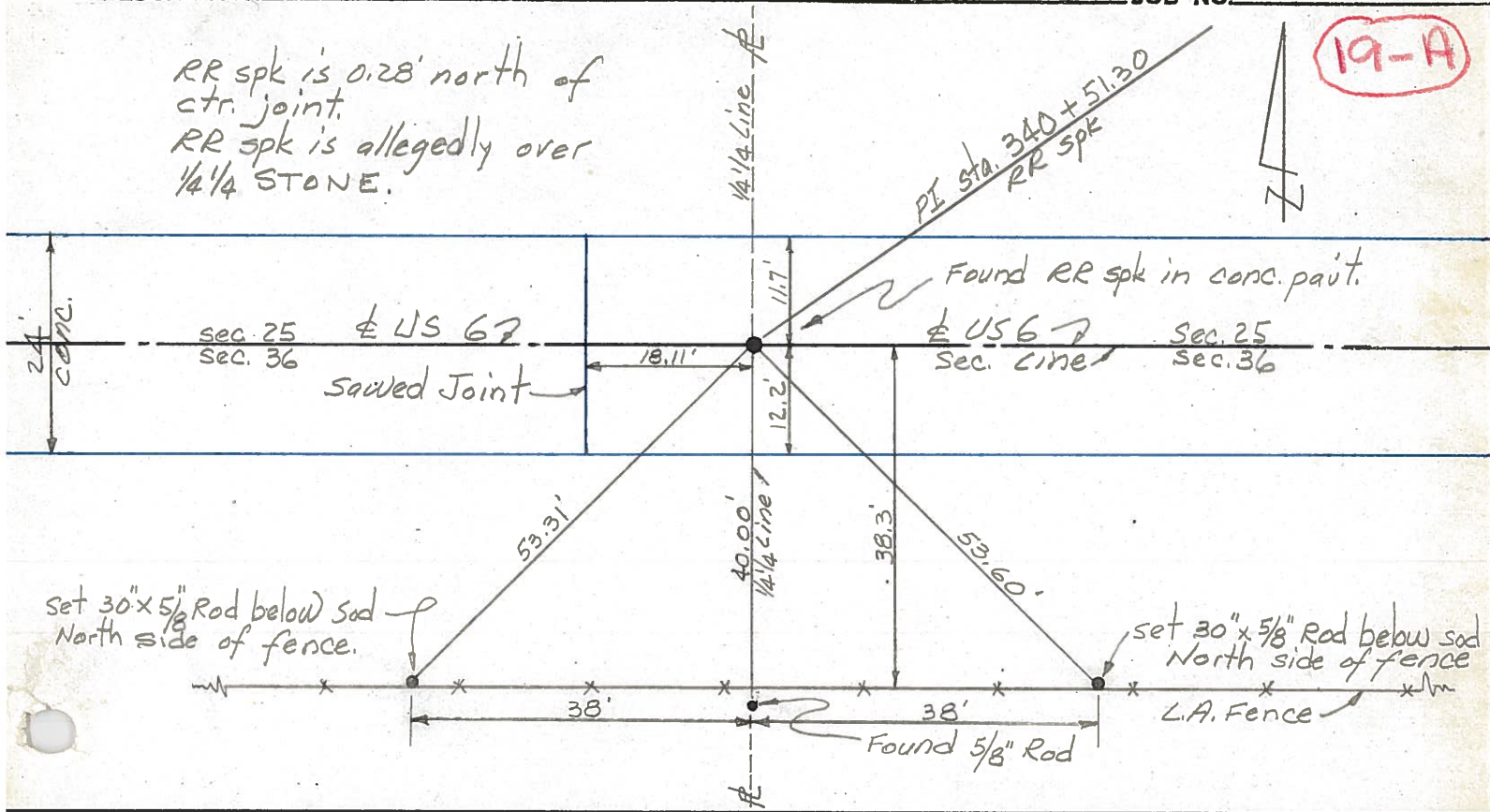
S. R. US 6 WEATHER

SEC. Pulaski Twp TEMP.

DESCRIPTION CONTROL POINTS JOB NO.

RR spk is 0.28' north of ctr. joint.
RR spk is allegedly over 1/4" STONE.

19-A

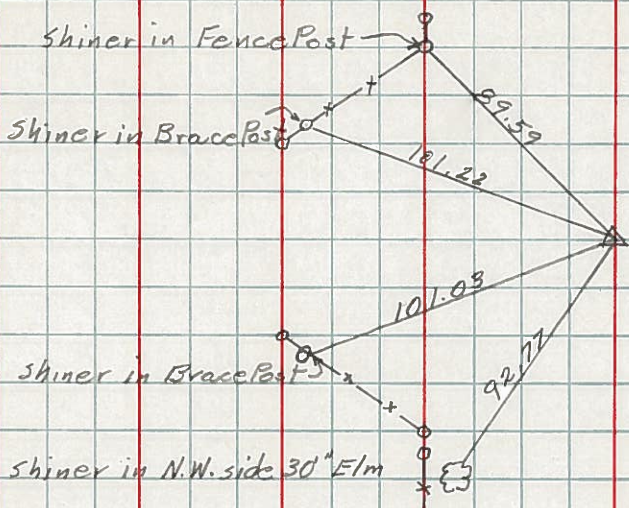


PERSONNEL	TITLE	PERSONNEL	TITLE	COUNTY	DATE	WEATHER	TEMP.
Hoover		Young		Williams	12-8-60	Cloudy	30°
Ruffer		Mohler		S. R. 6			
Hoff				SEC.			
Delventhal							

DESCRIPTION	LEFT	CENTER LINE	RIGHT	JOB NO.
-------------	------	-------------	-------	---------

123.

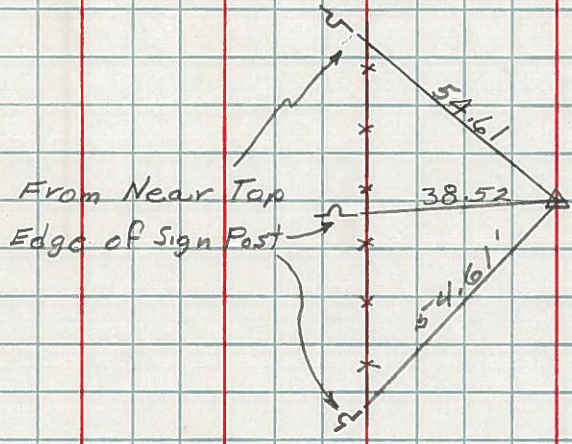
(19)



Sta. 327+45.83
 Found R.R. Spk
 Int Co. Rd. 18

124.

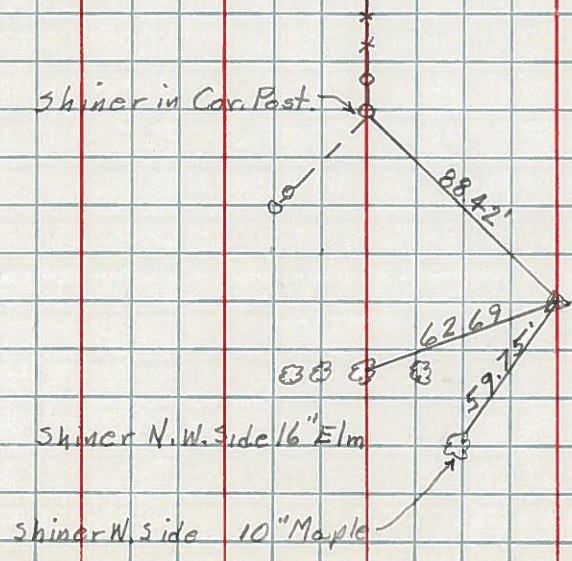
(19-A)



Sta. 340+51.30
 Found R.R. Spk.

126.

(19-C)



Sta. 366+63.44
 Found R.R. Spk.
 Int Co. Rd. 1875

PERSONNEL TITLE PERSONNEL TITLE

Louys

COUNTY Wi.

DATE 2-27-58

S. R. 6

WEATHER

SEC. Relocation over Pt. # 384 TEMP. 40°

DESCRIPTION

Witnesses to Control Points

JOB NO.

124

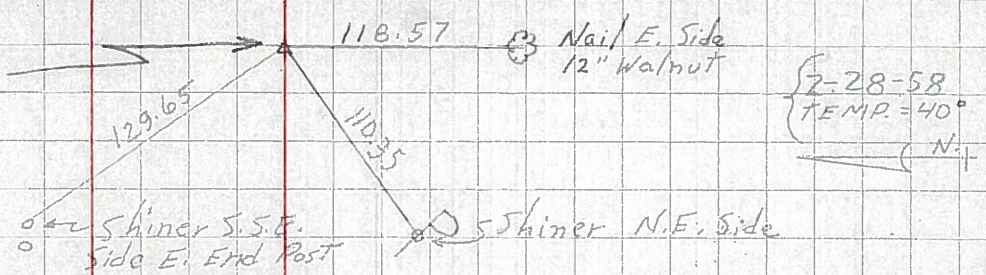
R/W only

P.I. - sta. 340 + 51.30

19-A

$\Delta = 0^{\circ} - 01' - 20''$ LT.

(Point is 0.20' LT. OF a str. line between 1/2 Mile Points) (Fd. Stone R.R. SPK.)



2-28-58 TEMP. = 40°

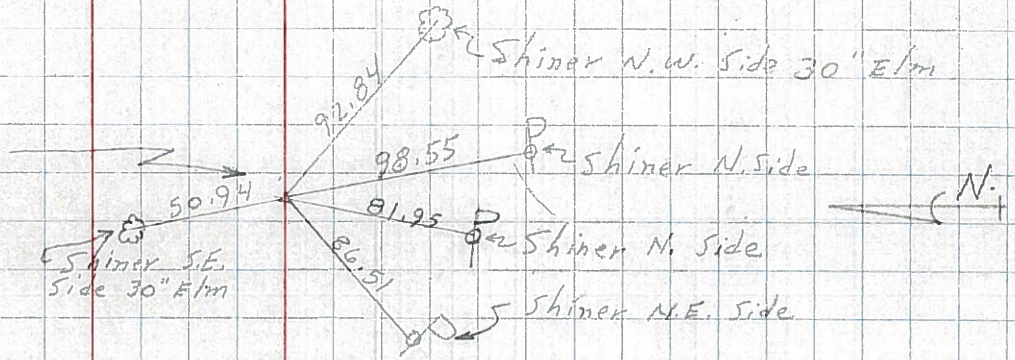
123

19

P.I. - sta. 327 + 45.85

$\Delta = 0^{\circ} - 00'$

(EST. RR. SPK.)



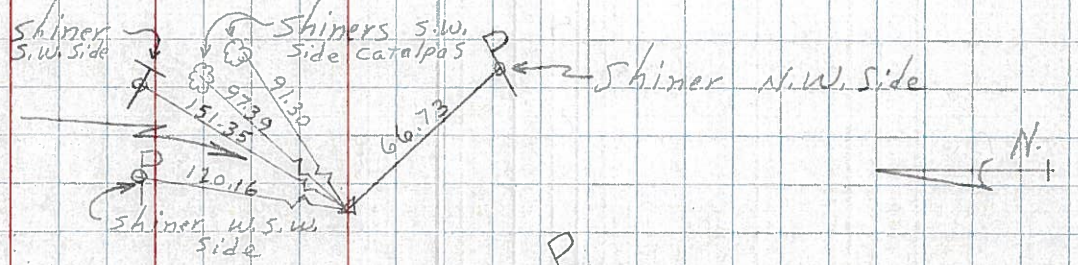
122

18-A

P.I. - sta. 301 + 06.26

$\Delta = 0^{\circ} - 00'$

(Fd. DRAG Tooth.)



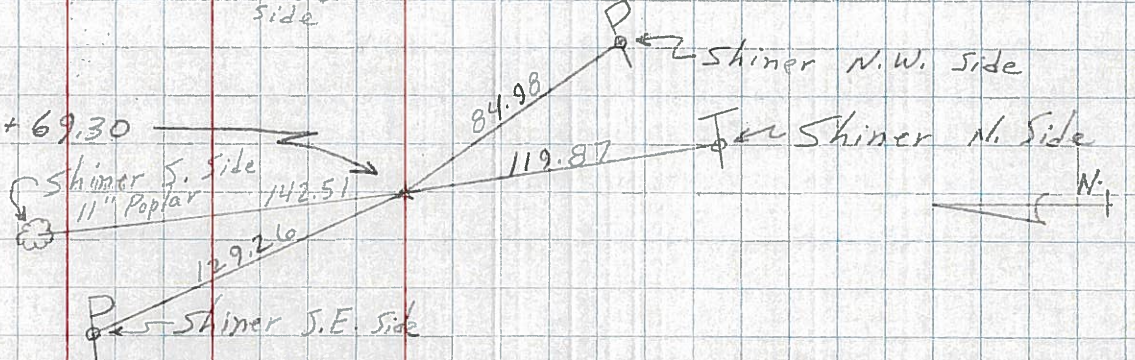
121

18

P.I. - sta 274 + 69.30

$\Delta = 0^{\circ} - 10'$ RT.

(R. R. SPK. EST.)



120

17-C

R/W only

P.I. - sta 258 + 00.26

$\Delta = 0^{\circ} - 01'$ RT $0^{\circ} - 00' - 30''$ LT.

(Point is 0.10 Pt. of a str. line Between 1/2 Mile Points) (Fd. Stone R.R. SPK.)

