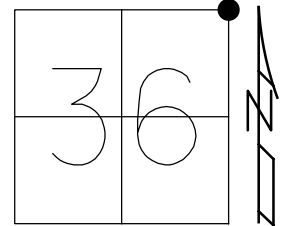


O.D.O.T. DISTRICT 2 SURVEY OFFICE (USE ONLY)

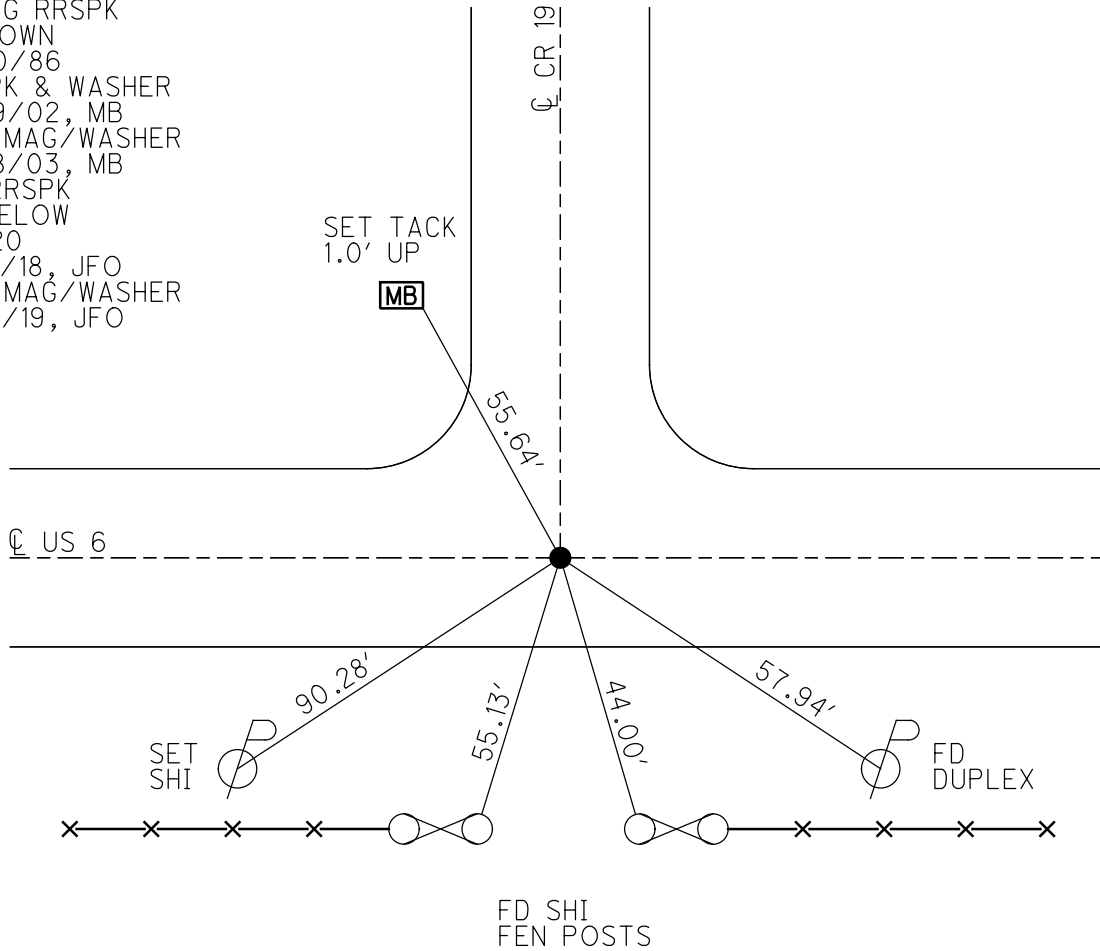
PERSONNEL _____ REFERENCE NO. 20 SHEET 15 OF 19
 NOTES AUBLE DATE 9/4/19 ROUTE US 6
 H.C. LEU WEATHER SUNNY COUNTY WILLIAMS
 R.C. NASON TEMP. 65° TOWNSHIP PULASKI
 _____ NIESE SECTION 36
 DWG BY NIESE PID 95792 T 6 N R 3 E

TYPE MONUMENT R.R. SPIKE
~~ON SURFACE~~ - BELOW 4"
 OFFSET Q PAVEMENT ON LT : RT
11.9' TO RT EDGE PAVEMENT
 STATION: 959+36.50



HORIZ. DATUM: NAD83(2011) GEOID: 2012A
 GRID: NORTHING: 652716.171 EASTING: 1431444.697

RECORD:
 FD LG RRSPK
 4" DOWN
 5/30/86
 FD PK & WASHER
 4/29/02, MB
 SET MAG/WASHER
 8/28/03, MB
 FD RRSPK
 4" BELOW
 REF20
 2/13/18, JFO
 SET MAG/WASHER
 11/13/19, JFO



O.D.O.T. DISTRICT 2 SURVEY OFFICE

PERSONNEL _____

REFERENCE NO. 20

SHEET 15 OF 20

NOTES Bacnhisel

H.C. Canterbury

DATE 4-29-02

ROUTE U.S. 6

R.C. Moser

WEATHER cloudy

COUNTY WILLIAMS

TEMP. +45°

TOWNSHIP PULASKI

SECTION 36

T 6 N R 3 E

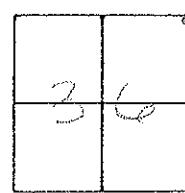
TYPE MONUMENT PK + Washer

ON SURFACE - BELOW on surface

LEFT - Q PAV'T. - RIGHT _____

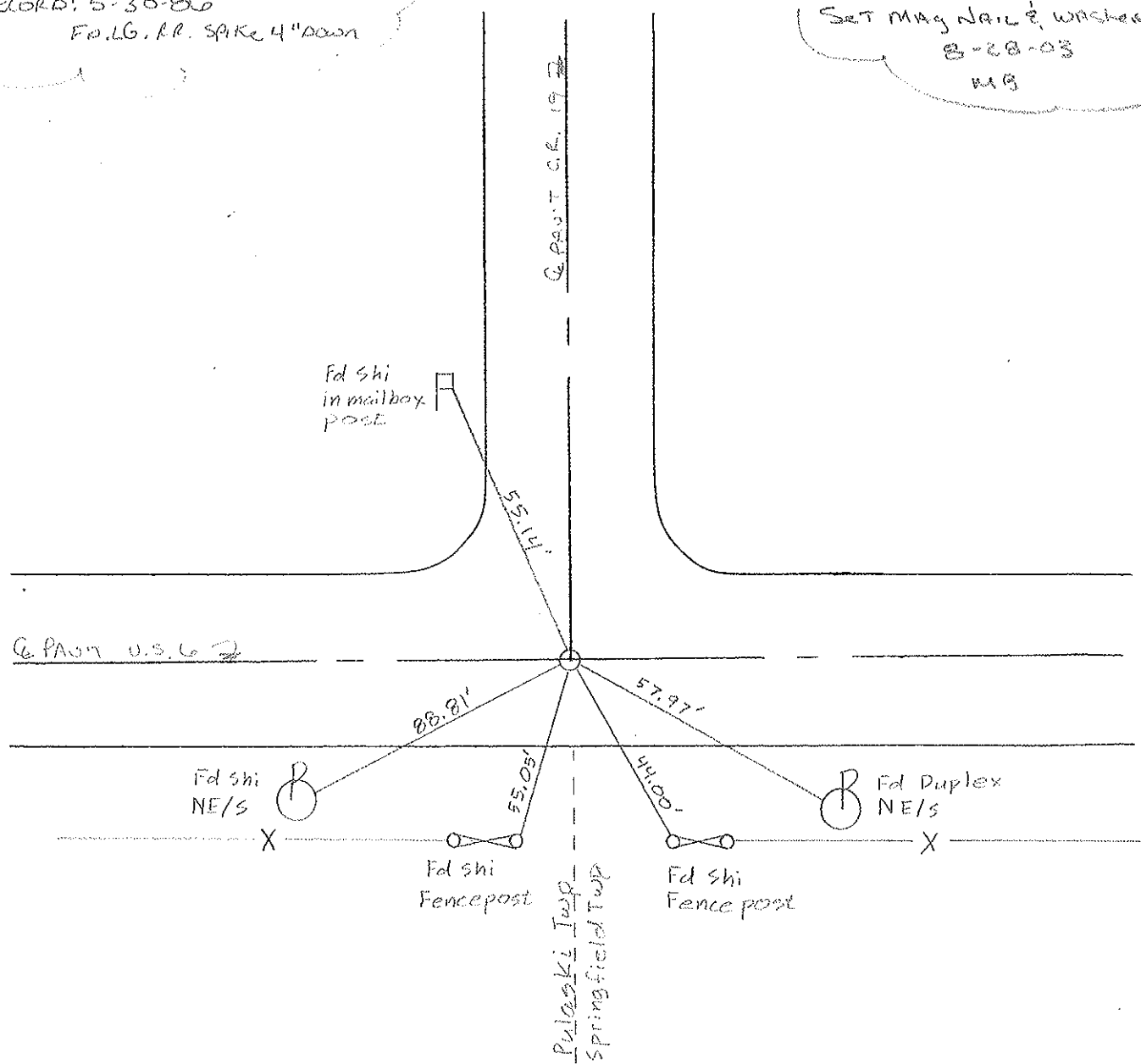
11.7' TO RT. EDGE PAVEMENT

S.L.M. 960+04



RECORD: 5-30-86
Fd. L.G. R.R. SPIKE 4" DOWN

SET MAG NAIL & WASHER
8-28-03
MB



O.D.O.T. DISTRICT 2 SURVEY OFFICE

PERSONNEL

REFERENCE NO. 20

SHEET 16 OF 22

NOTES VAN DUSEN

H.C. KUSZ

DATE 20 July 1992

ROUTE US 6

R.C. MCCORMICK

WEATHER RAIN

COUNTY Williams

TEMP. 75°

TOWNSHIP SPRINGFIELD / Pulaski

SECTION 25, 30, 31, 36

T 6 N R E

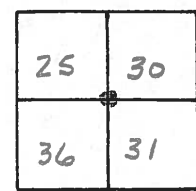
TYPE MONUMENT PK & WASHER

ON SURFACE - ~~BELOW~~ YES

~~LEFT - & PAV'T. - RIGHT~~ YES

11.9 TO RT EDGE PAVEMENT

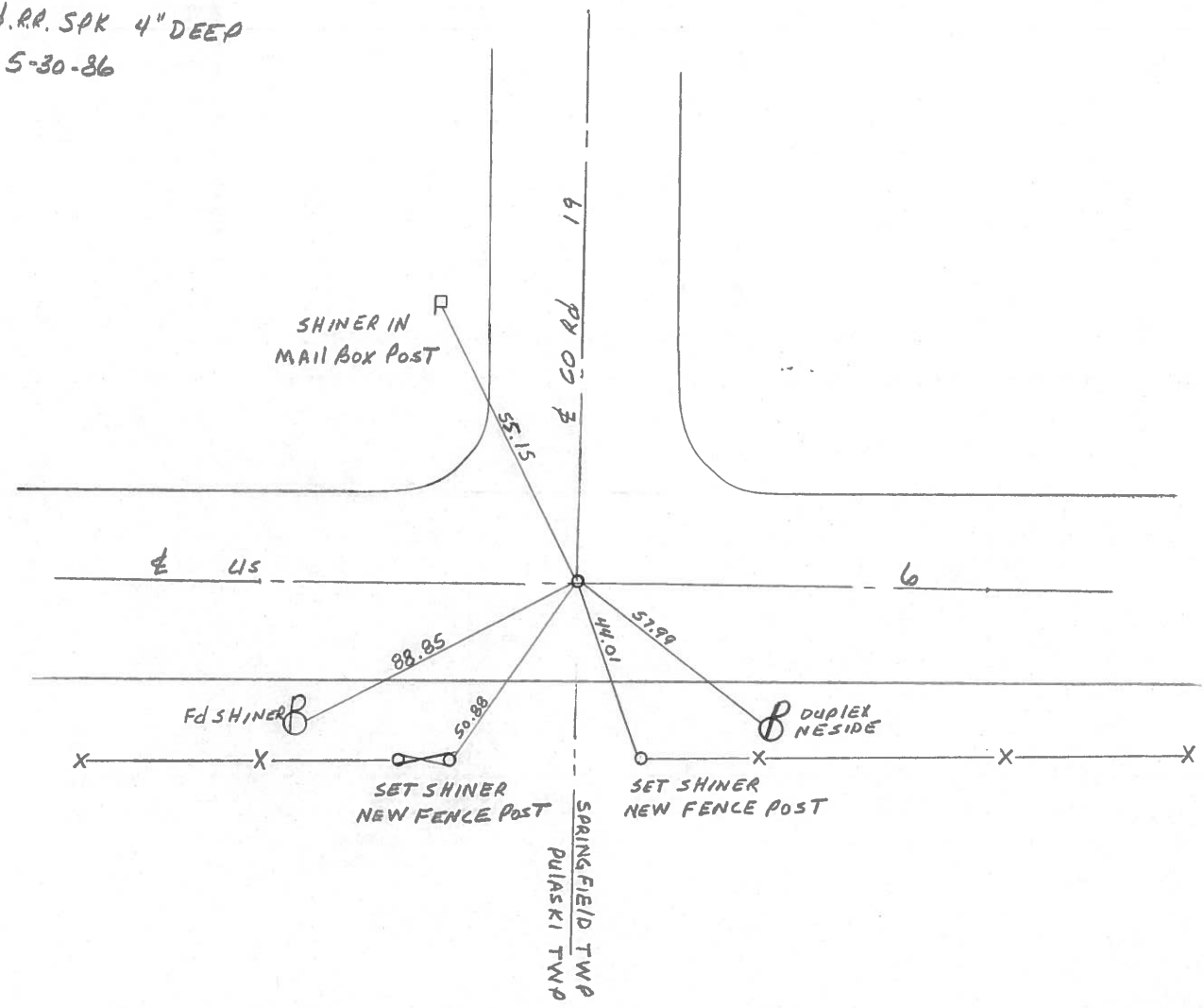
S.L.M. 960+04



Fd. RR. SPK IN CENTER
OF 24' CONC. PVMT.
SEC. COF. - TWPLINE

SET PK & WASHER
10-26-92
MB

Fd. RR. SPK 4" DEEP
5-30-86



OD.O.T. DISTRICT 2 SURVEY OFFICE

SHEET 17 OF

County Williams S.R. #6

Township Pulaski

Section 36

T N, R E

Personnel I. Stone

P. Nouseur

R. Michalak

J. Curtis

Date 9 May 84

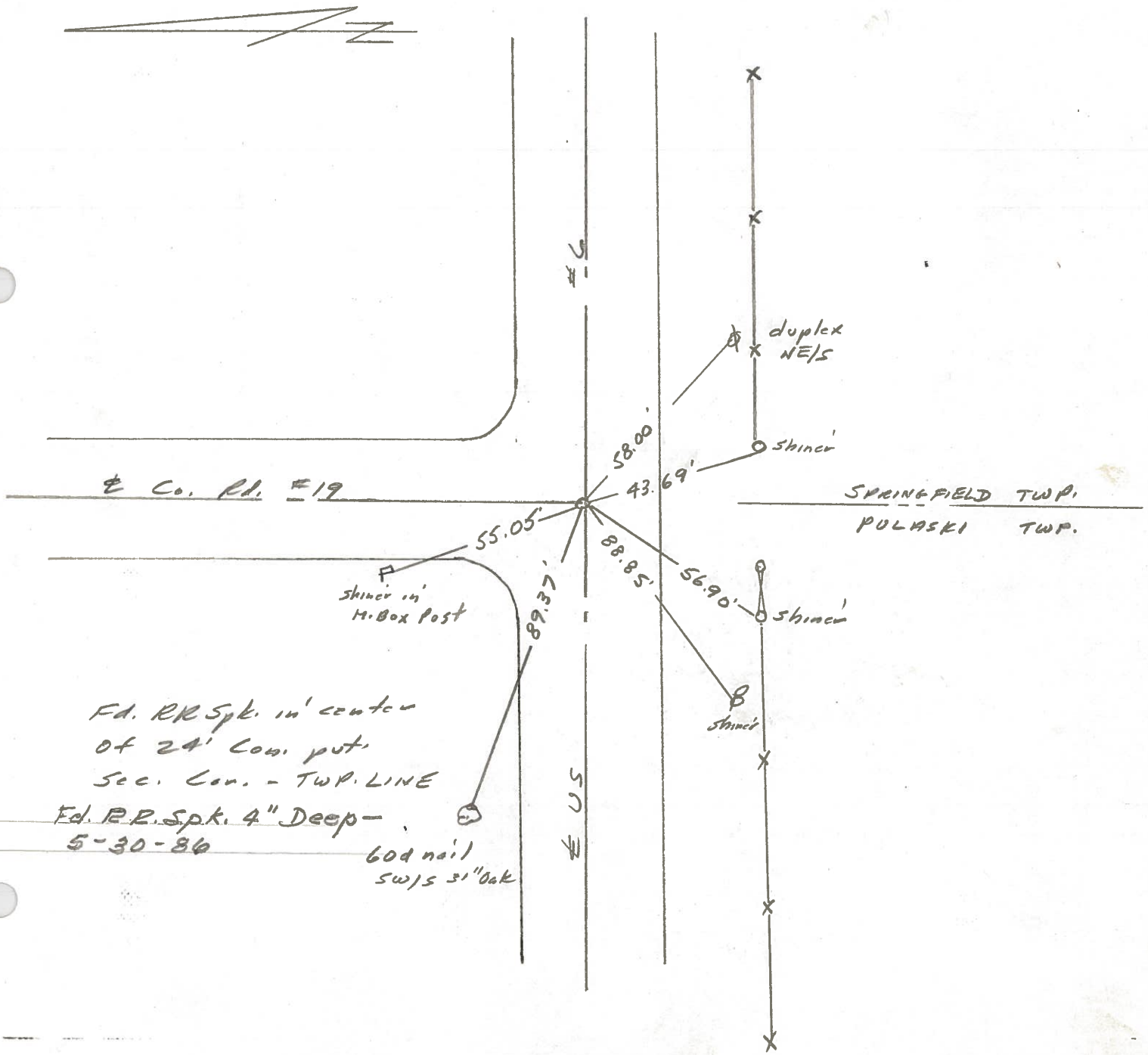
Weather Cloudy

Temp. 44°

25	30
36	31



REF. NO. 20



PERSONNEL TITLE PERSONNEL TITLE

Red Beach
W. Knape

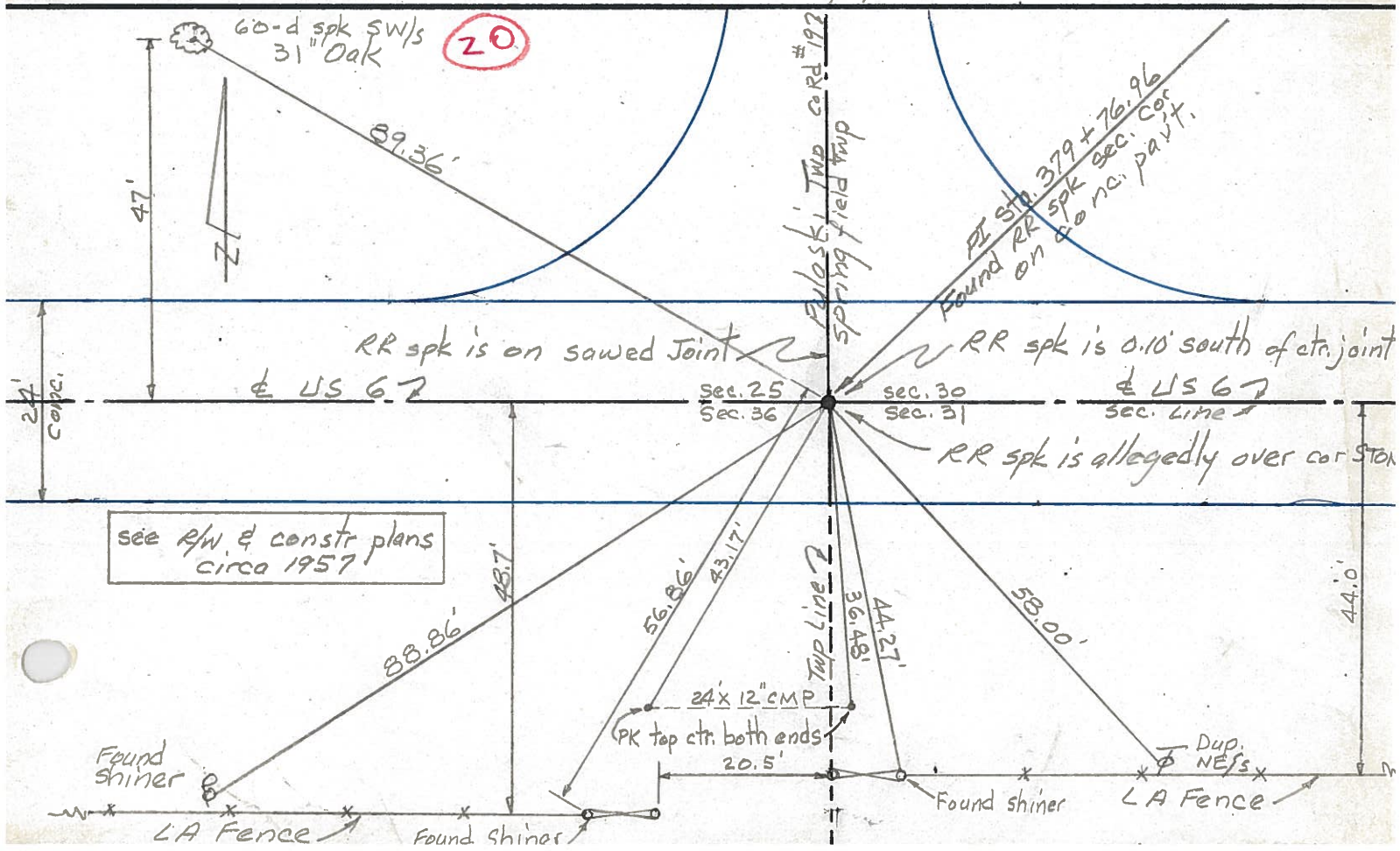
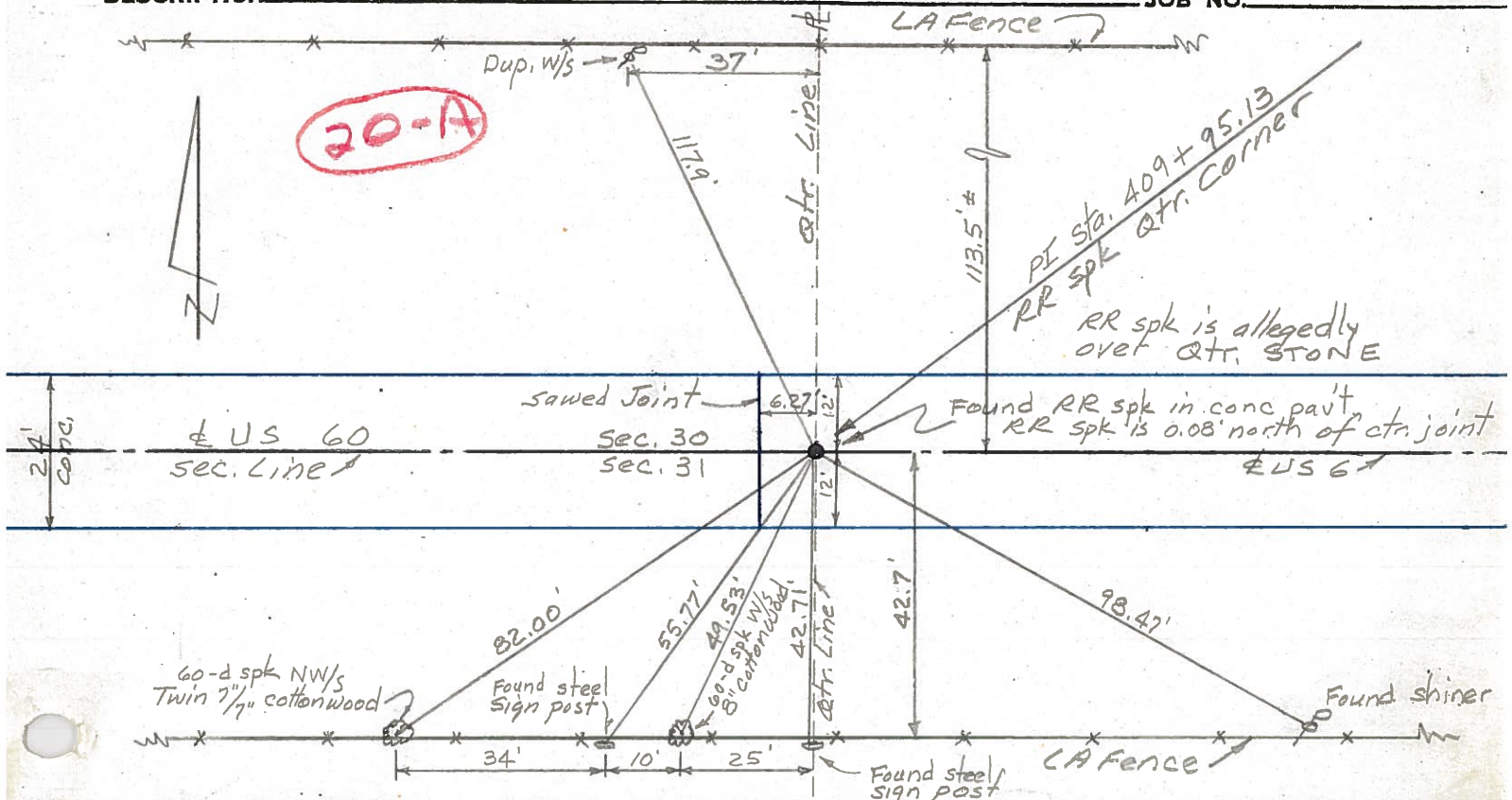
COUNTY Williams DATE Nov 1975

S. R. US 6 WEATHER

SEC. Springfield Twp. TEMP

DESCRIPTION control points

JOB NO.

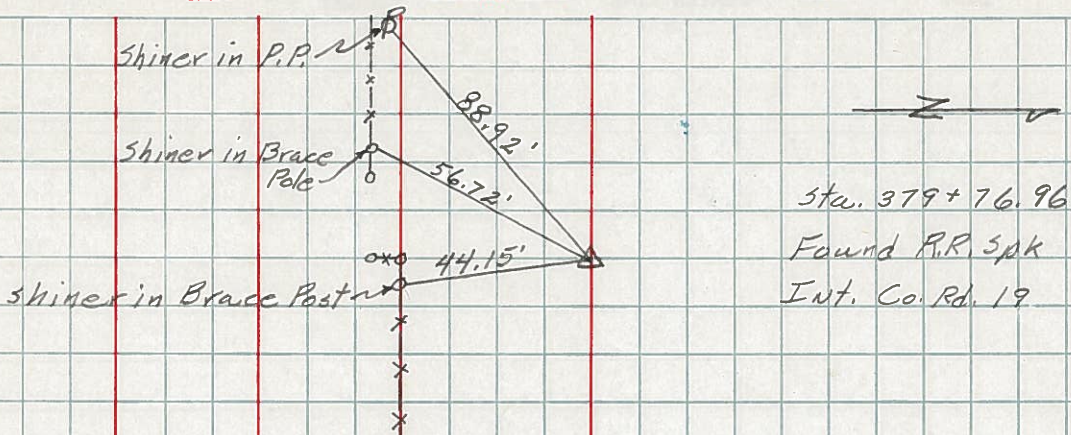


PERSONNEL	TITLE	PERSONNEL	TITLE	COUNTY	DATE	WEATHER	TEMP.
Hoover		Young		Williams	12-8-60	Ptly. Cloudy	30°
Ruffer		Mohler		S. R. <u>6</u>			
Hoff				SEC.			
Delventhal							

DESCRIPTION	LEFT	CENTER LINE	RIGHT	JOB NO.
-------------	------	-------------	-------	---------

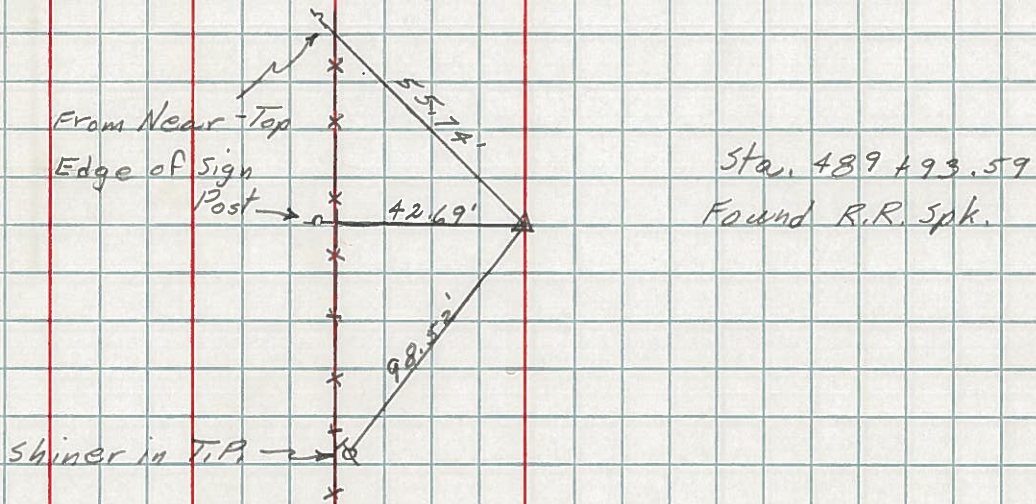
127.

(20)



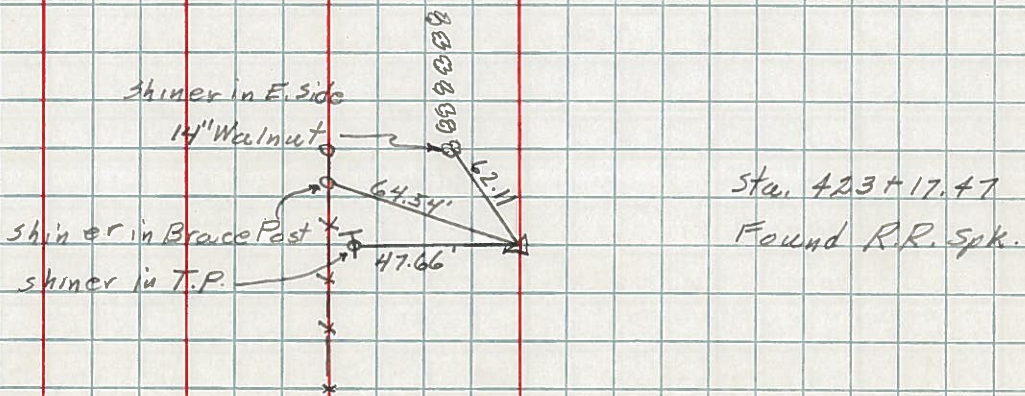
136.

(22)

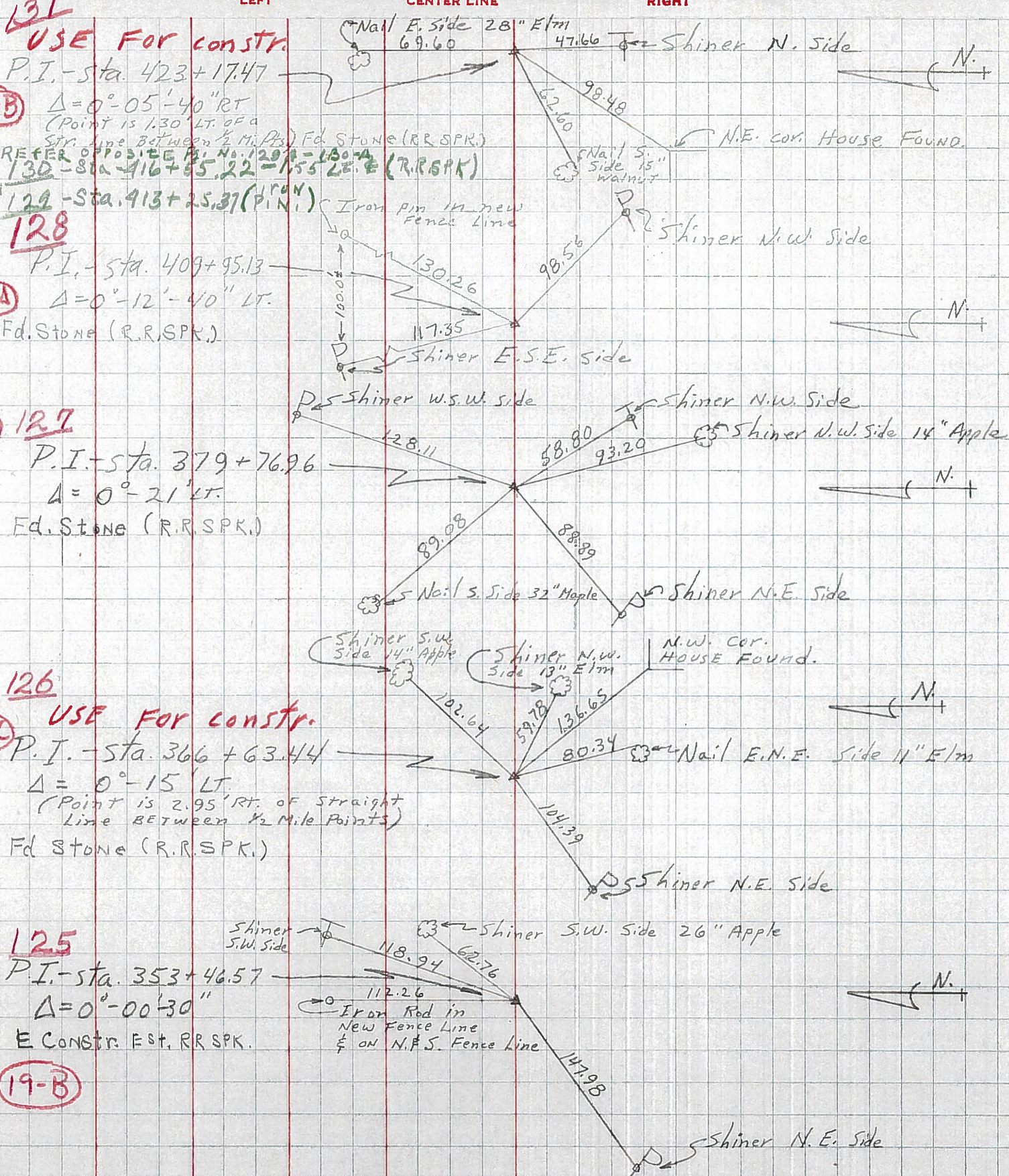


131.

(20-B)



PERSONNEL TITLE PERSONNEL TITLE COUNTY Wi. DATE 2-28-58
 Louys _____ S. R. 6 WEATHER _____
 _____ SEC. Relocation over Rt. #384 TEMP. 40°
 DESCRIPTION Witnesses to Control Points JOB NO. _____



131

20-B

20-A

20

19-C

19-B

USE FOR CONSTR.

P.I. - Sta. 423+17.47
 Δ = 0°-05'-40" RT
 (Point is 130' LT. OF a
 Str. Line Between 1/2 Mile Points)
 Fd. Stone (R.R. SPK.)
 REFER OPPOSITE Pg. No. 129 - 130 - 131 - 132 - 133 - 134 - 135 - 136 - 137 - 138 - 139 - 140 - 141 - 142 - 143 - 144 - 145 - 146 - 147 - 148 - 149 - 150 - 151 - 152 - 153 - 154 - 155 - 156 - 157 - 158 - 159 - 160 - 161 - 162 - 163 - 164 - 165 - 166 - 167 - 168 - 169 - 170 - 171 - 172 - 173 - 174 - 175 - 176 - 177 - 178 - 179 - 180 - 181 - 182 - 183 - 184 - 185 - 186 - 187 - 188 - 189 - 190 - 191 - 192 - 193 - 194 - 195 - 196 - 197 - 198 - 199 - 200 - 201 - 202 - 203 - 204 - 205 - 206 - 207 - 208 - 209 - 210 - 211 - 212 - 213 - 214 - 215 - 216 - 217 - 218 - 219 - 220 - 221 - 222 - 223 - 224 - 225 - 226 - 227 - 228 - 229 - 230 - 231 - 232 - 233 - 234 - 235 - 236 - 237 - 238 - 239 - 240 - 241 - 242 - 243 - 244 - 245 - 246 - 247 - 248 - 249 - 250 - 251 - 252 - 253 - 254 - 255 - 256 - 257 - 258 - 259 - 260 - 261 - 262 - 263 - 264 - 265 - 266 - 267 - 268 - 269 - 270 - 271 - 272 - 273 - 274 - 275 - 276 - 277 - 278 - 279 - 280 - 281 - 282 - 283 - 284 - 285 - 286 - 287 - 288 - 289 - 290 - 291 - 292 - 293 - 294 - 295 - 296 - 297 - 298 - 299 - 300 - 301 - 302 - 303 - 304 - 305 - 306 - 307 - 308 - 309 - 310 - 311 - 312 - 313 - 314 - 315 - 316 - 317 - 318 - 319 - 320 - 321 - 322 - 323 - 324 - 325 - 326 - 327 - 328 - 329 - 330 - 331 - 332 - 333 - 334 - 335 - 336 - 337 - 338 - 339 - 340 - 341 - 342 - 343 - 344 - 345 - 346 - 347 - 348 - 349 - 350 - 351 - 352 - 353 - 354 - 355 - 356 - 357 - 358 - 359 - 360 - 361 - 362 - 363 - 364 - 365 - 366 - 367 - 368 - 369 - 370 - 371 - 372 - 373 - 374 - 375 - 376 - 377 - 378 - 379 - 380 - 381 - 382 - 383 - 384 - 385 - 386 - 387 - 388 - 389 - 390 - 391 - 392 - 393 - 394 - 395 - 396 - 397 - 398 - 399 - 400 - 401 - 402 - 403 - 404 - 405 - 406 - 407 - 408 - 409 - 410 - 411 - 412 - 413 - 414 - 415 - 416 - 417 - 418 - 419 - 420 - 421 - 422 - 423 - 424 - 425 - 426 - 427 - 428 - 429 - 430 - 431 - 432 - 433 - 434 - 435 - 436 - 437 - 438 - 439 - 440 - 441 - 442 - 443 - 444 - 445 - 446 - 447 - 448 - 449 - 450 - 451 - 452 - 453 - 454 - 455 - 456 - 457 - 458 - 459 - 460 - 461 - 462 - 463 - 464 - 465 - 466 - 467 - 468 - 469 - 470 - 471 - 472 - 473 - 474 - 475 - 476 - 477 - 478 - 479 - 480 - 481 - 482 - 483 - 484 - 485 - 486 - 487 - 488 - 489 - 490 - 491 - 492 - 493 - 494 - 495 - 496 - 497 - 498 - 499 - 500 - 501 - 502 - 503 - 504 - 505 - 506 - 507 - 508 - 509 - 510 - 511 - 512 - 513 - 514 - 515 - 516 - 517 - 518 - 519 - 520 - 521 - 522 - 523 - 524 - 525 - 526 - 527 - 528 - 529 - 530 - 531 - 532 - 533 - 534 - 535 - 536 - 537 - 538 - 539 - 540 - 541 - 542 - 543 - 544 - 545 - 546 - 547 - 548 - 549 - 550 - 551 - 552 - 553 - 554 - 555 - 556 - 557 - 558 - 559 - 560 - 561 - 562 - 563 - 564 - 565 - 566 - 567 - 568 - 569 - 570 - 571 - 572 - 573 - 574 - 575 - 576 - 577 - 578 - 579 - 580 - 581 - 582 - 583 - 584 - 585 - 586 - 587 - 588 - 589 - 590 - 591 - 592 - 593 - 594 - 595 - 596 - 597 - 598 - 599 - 600 - 601 - 602 - 603 - 604 - 605 - 606 - 607 - 608 - 609 - 610 - 611 - 612 - 613 - 614 - 615 - 616 - 617 - 618 - 619 - 620 - 621 - 622 - 623 - 624 - 625 - 626 - 627 - 628 - 629 - 630 - 631 - 632 - 633 - 634 - 635 - 636 - 637 - 638 - 639 - 640 - 641 - 642 - 643 - 644 - 645 - 646 - 647 - 648 - 649 - 650 - 651 - 652 - 653 - 654 - 655 - 656 - 657 - 658 - 659 - 660 - 661 - 662 - 663 - 664 - 665 - 666 - 667 - 668 - 669 - 670 - 671 - 672 - 673 - 674 - 675 - 676 - 677 - 678 - 679 - 680 - 681 - 682 - 683 - 684 - 685 - 686 - 687 - 688 - 689 - 690 - 691 - 692 - 693 - 694 - 695 - 696 - 697 - 698 - 699 - 700 - 701 - 702 - 703 - 704 - 705 - 706 - 707 - 708 - 709 - 710 - 711 - 712 - 713 - 714 - 715 - 716 - 717 - 718 - 719 - 720 - 721 - 722 - 723 - 724 - 725 - 726 - 727 - 728 - 729 - 730 - 731 - 732 - 733 - 734 - 735 - 736 - 737 - 738 - 739 - 740 - 741 - 742 - 743 - 744 - 745 - 746 - 747 - 748 - 749 - 750 - 751 - 752 - 753 - 754 - 755 - 756 - 757 - 758 - 759 - 760 - 761 - 762 - 763 - 764 - 765 - 766 - 767 - 768 - 769 - 770 - 771 - 772 - 773 - 774 - 775 - 776 - 777 - 778 - 779 - 780 - 781 - 782 - 783 - 784 - 785 - 786 - 787 - 788 - 789 - 790 - 791 - 792 - 793 - 794 - 795 - 796 - 797 - 798 - 799 - 800 - 801 - 802 - 803 - 804 - 805 - 806 - 807 - 808 - 809 - 810 - 811 - 812 - 813 - 814 - 815 - 816 - 817 - 818 - 819 - 820 - 821 - 822 - 823 - 824 - 825 - 826 - 827 - 828 - 829 - 830 - 831 - 832 - 833 - 834 - 835 - 836 - 837 - 838 - 839 - 840 - 841 - 842 - 843 - 844 - 845 - 846 - 847 - 848 - 849 - 850 - 851 - 852 - 853 - 854 - 855 - 856 - 857 - 858 - 859 - 860 - 861 - 862 - 863 - 864 - 865 - 866 - 867 - 868 - 869 - 870 - 871 - 872 - 873 - 874 - 875 - 876 - 877 - 878 - 879 - 880 - 881 - 882 - 883 - 884 - 885 - 886 - 887 - 888 - 889 - 890 - 891 - 892 - 893 - 894 - 895 - 896 - 897 - 898 - 899 - 900 - 901 - 902 - 903 - 904 - 905 - 906 - 907 - 908 - 909 - 910 - 911 - 912 - 913 - 914 - 915 - 916 - 917 - 918 - 919 - 920 - 921 - 922 - 923 - 924 - 925 - 926 - 927 - 928 - 929 - 930 - 931 - 932 - 933 - 934 - 935 - 936 - 937 - 938 - 939 - 940 - 941 - 942 - 943 - 944 - 945 - 946 - 947 - 948 - 949 - 950 - 951 - 952 - 953 - 954 - 955 - 956 - 957 - 958 - 959 - 960 - 961 - 962 - 963 - 964 - 965 - 966 - 967 - 968 - 969 - 970 - 971 - 972 - 973 - 974 - 975 - 976 - 977 - 978 - 979 - 980 - 981 - 982 - 983 - 984 - 985 - 986 - 987 - 988 - 989 - 990 - 991 - 992 - 993 - 994 - 995 - 996 - 997 - 998 - 999 - 1000

P.I. - Sta. 409+95.13

Δ = 0°-12'-40" LT.

Fd. Stone (R.R. SPK.)

P.I. - Sta. 379+76.96

Δ = 0°-21' LT.

Fd. Stone (R.R. SPK.)

USE FOR CONSTR.

P.I. - Sta. 366+63.44

Δ = 0°-15' LT.

(Point is 2.95' RT. OF STRAIGHT
Line BETWEEN 1/2 Mile Points)

Fd. Stone (R.R. SPK.)

P.I. - Sta. 353+46.57

Δ = 0°-00'-30"

E CONST. Est. RR SPK.