

O.D.O.T. DISTRICT 2 SURVEY OFFICE (USE ONLY)

PERSONNEL

REFERENCE NO. 21

SHEET 18 OF 19

NOTES AUBLE  
 H.C. LEU  
 R.C. NASON  
NIESE

DATE 9/4/19  
 WEATHER SUNNY  
 TEMP. 65°

ROUTE US 6  
 COUNTY WILLIAMS  
 TOWNSHIP SPRINGFIELD  
 SECTION 31

DWG BY NIESE PID 95792

T 6 N R 4 E

TYPE MONUMENT MAG/WASHER

ON SURFACE - ~~BELOW~~ ON

OFFSET  $\varnothing$  PAVEMENT 1.0' LT : ~~RT~~

11.8' TO LT EDGE PAVEMENT

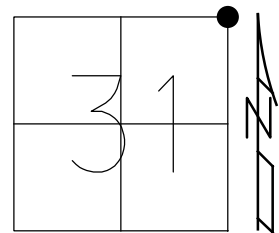
STATION: 1015+96.84

HORZ.DATUM: NAD83(2011)

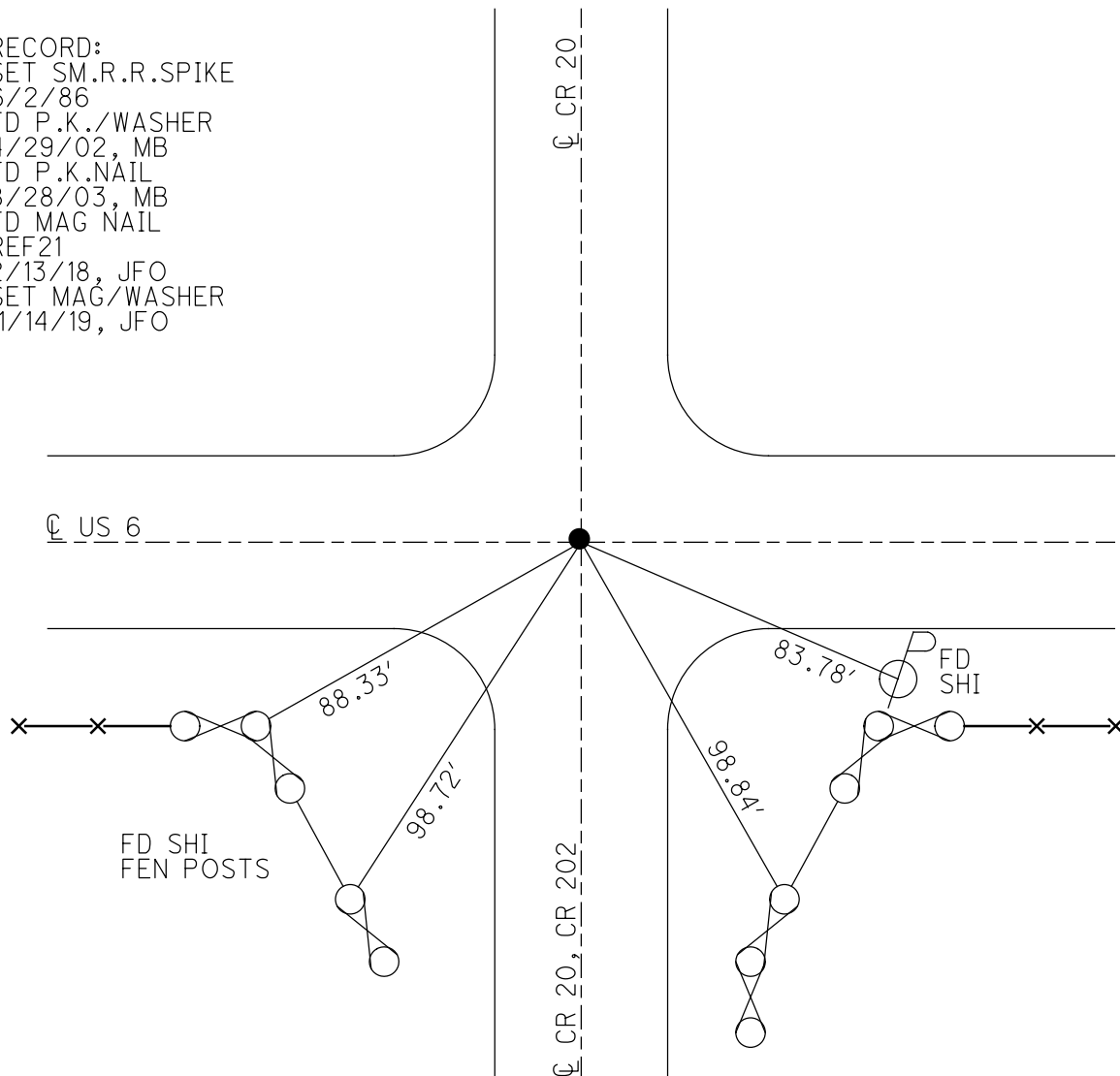
GEOID: 2012A

GRID: NORTHING: 652633.210

EASTING: 1437104.417



RECORD:  
 SET SM.R.R.SPIKE  
 6/2/86  
 FD P.K./WASHER  
 4/29/02, MB  
 FD P.K.NAIL  
 8/28/03, MB  
 FD MAG NAIL  
 REF21  
 2/13/18, JFO  
 SET MAG/WASHER  
 11/14/19, JFO



# O.D.O.T. DISTRICT 2 SURVEY OFFICE

PERSONNEL

REFERENCE NO. 21

SHEET 18 OF 20

NOTES Barnhisel

H.C. Canterbury

R.C. Moses

DATE 4-29-02

WEATHER Cloudy

TEMP. +45°

ROUTE U.S. 6

COUNTY WILLIAMS

TOWNSHIP SPRINGFIELD

SECTION 30

T 6 N R 4 E

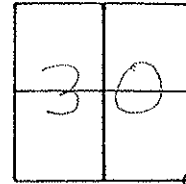
TYPE MONUMENT PK + Washers

ON SURFACE - BELOW on surface

LEFT - PAV'T. - RIGHT 0.6' LT

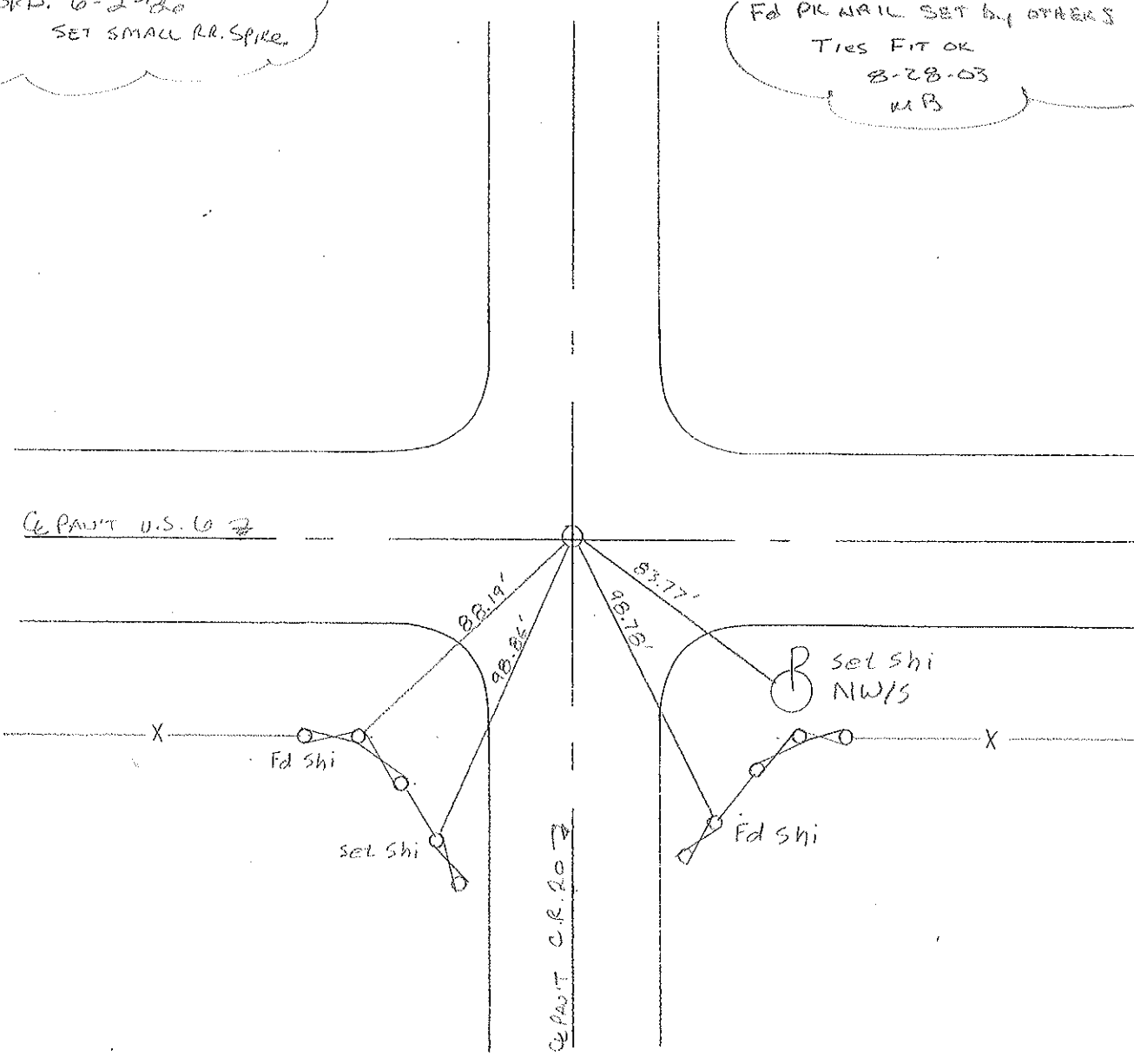
12.7' TO LT EDGE PAVEMENT

S.L.M. 1016+68



RECORD: 6-2-80  
SET SMALL RR. SPIRE.

Fd PK NAIL SET BY OTHERS  
TIES FIT OK  
8-28-03  
MB



# O.D.O.T. DISTRICT 2 SURVEY OFFICE

PERSONNEL

REFERENCE NO. 21

SHEET 19 OF 22

NOTES VAN DUSEN

H.C. KUSZ

DATE 21 July 1992

ROUTE US 6

R.C. BURNETT

WEATHER SUNNY

COUNTY Williams

TEMP. 65°

TOWNSHIP SPRINGFIELD

SECTION 29, 30, 31, 32

T. 6 N. R. E

TYPE MONUMENT PK & WASHER

ON SURFACE - BELOW YES

LEFT - 0 PAV'T. - RIGHT 0.6

12.7 TO AT EDGE PAVEMENT

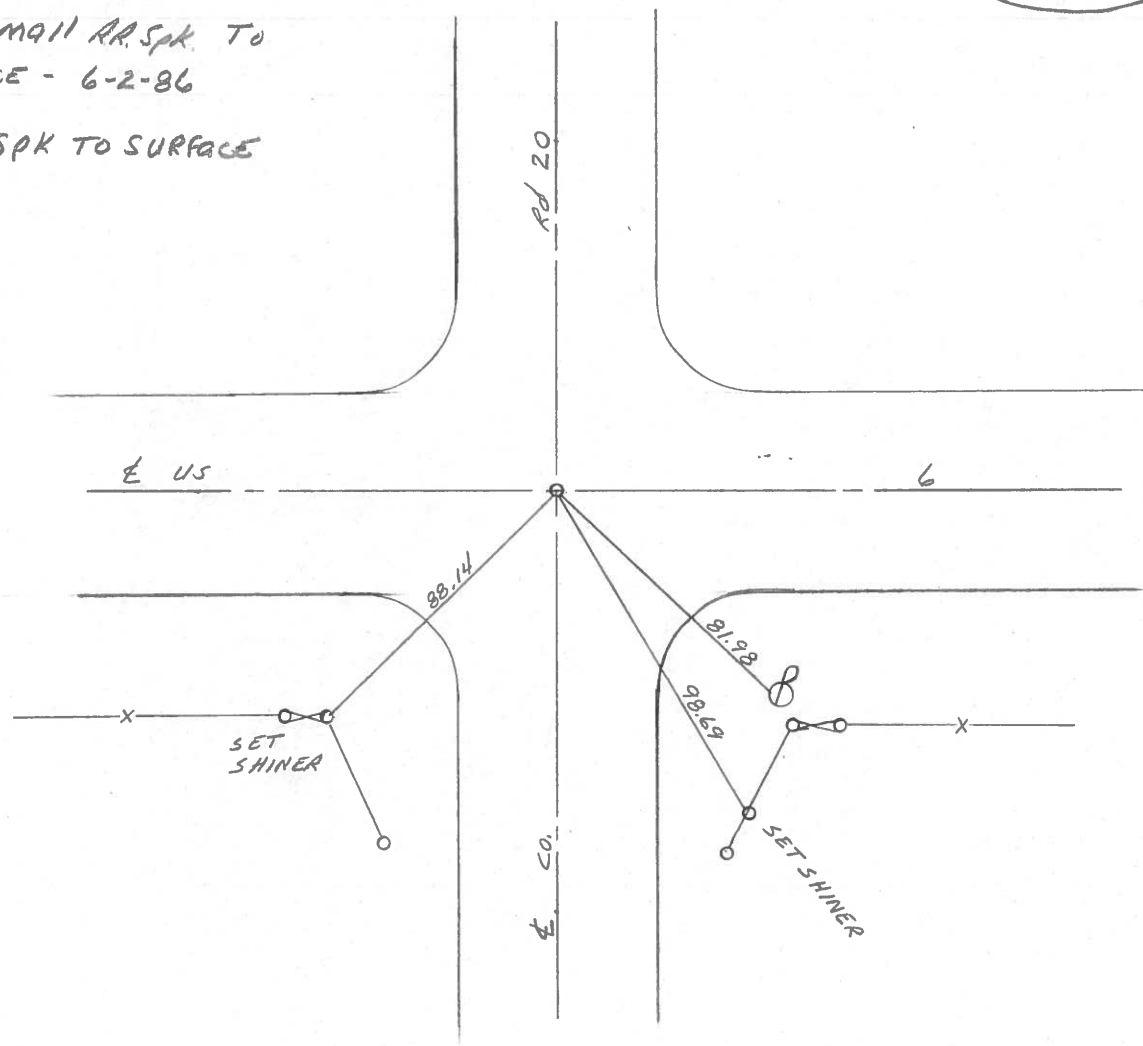
S.L.M. 1016 + 68

30	29
31	32



SET PK & WASHER  
 9-25-92  
 MB

Fd RR Spk IN CENTER  
 OF 24' CONC. PVMT.  
 SET SMALL RR Spk TO  
 SURFACE - 6-2-86  
 Fd RR Spk TO SURFACE



Q.D.O.T. DISTRICT 2 SURVEY OFFICE

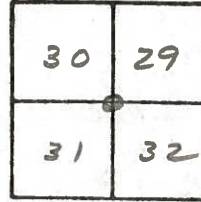
SHEET 20 OF     

County Williams S.R. #6  
Township Springfield  
Section 29-30-31-32

Date 9 May 84  
Weather Cloudy  
Temp. 45°

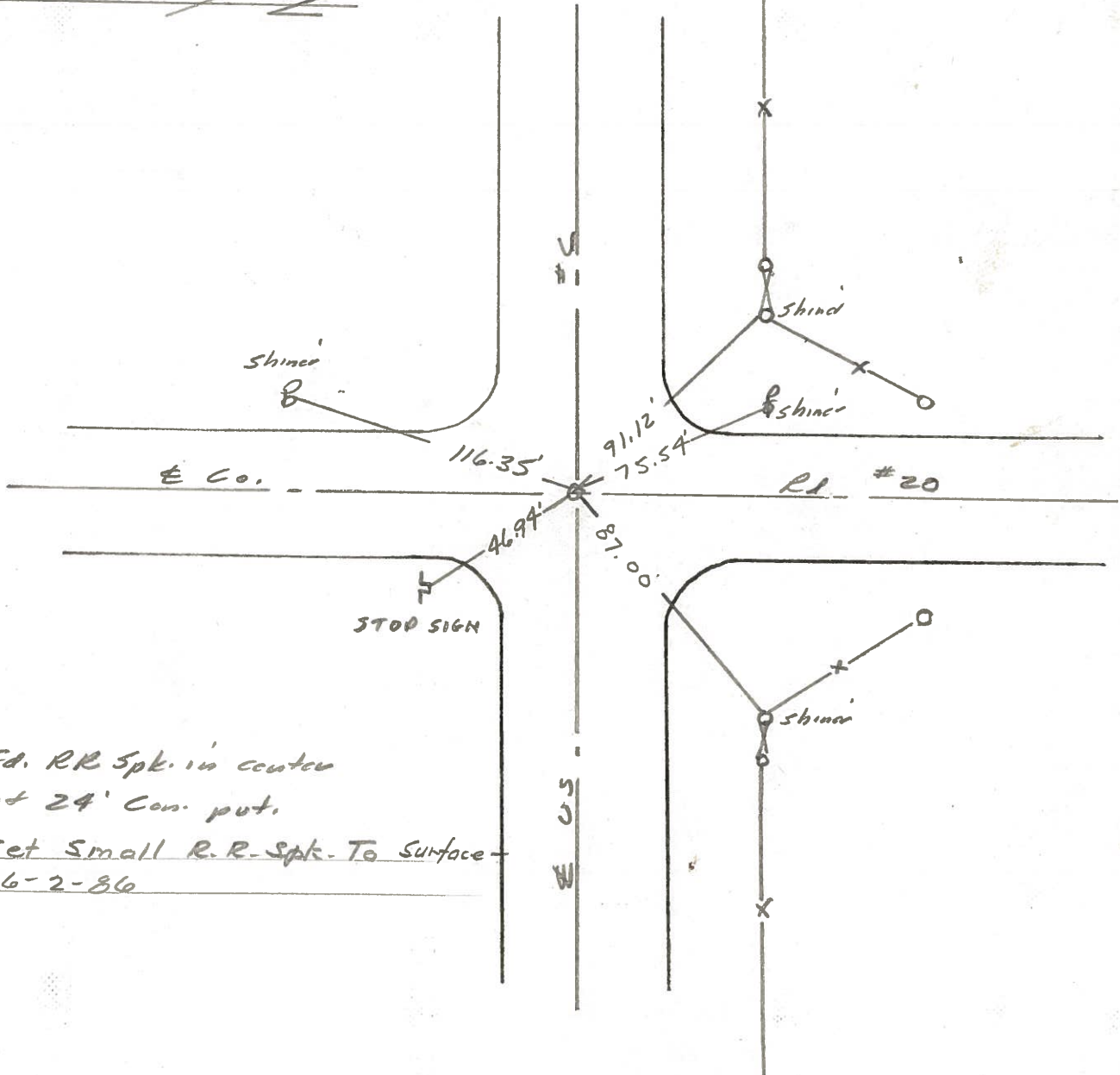
T    N, R    E

Personnel L. Stone  
P. Neuser  
R. Michalak  
D. Curtis



1015+60

REF. NO. 21



Fd. RR Spk. in center  
of 24' Cons. put.  
Set Small R.R-Spk. To Surface  
6-2-86

PERSONNEL TITLE PERSONNEL TITLE

Red Beach  
W. Knape

COUNTY Williams DATE Nov 75

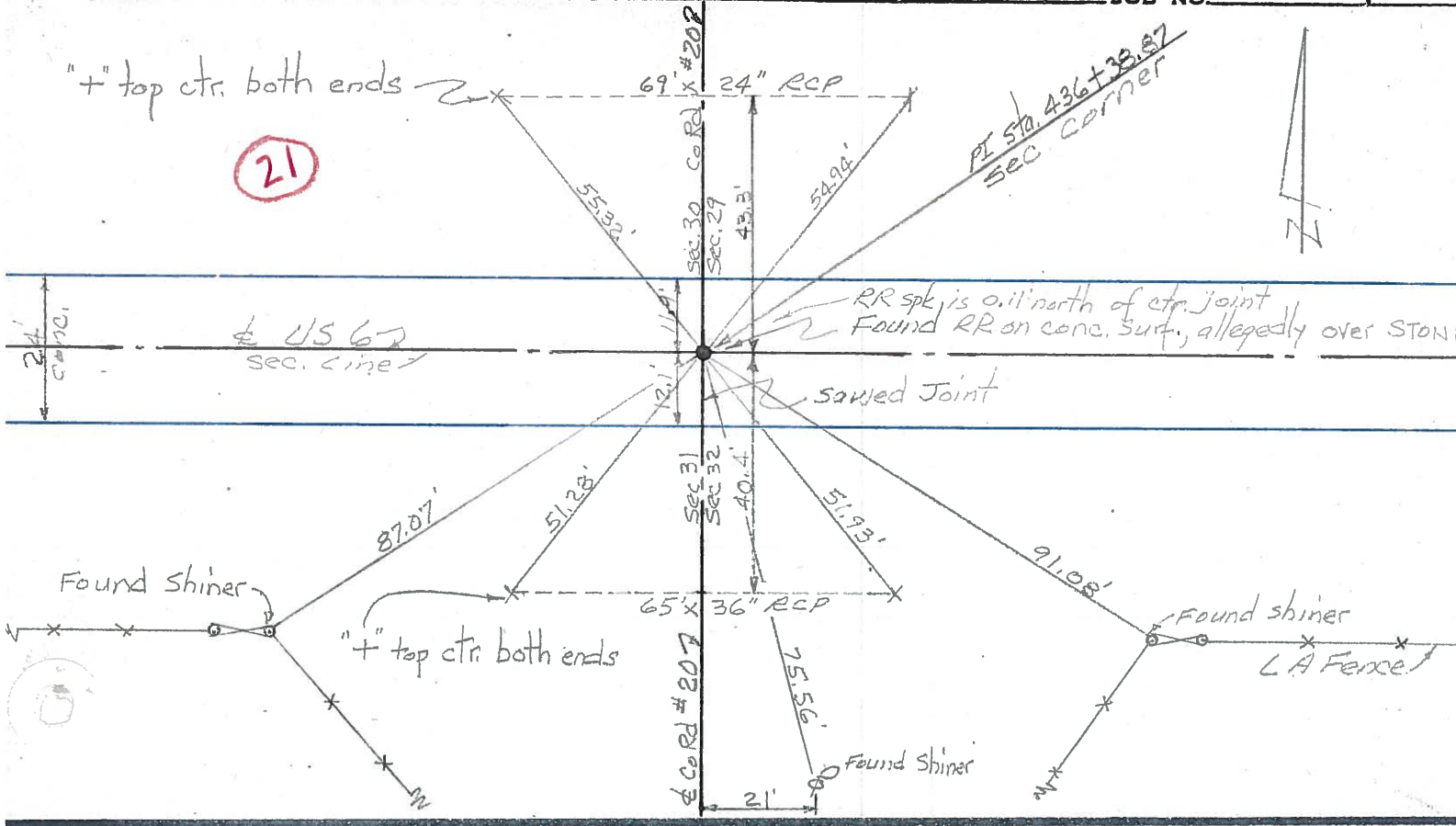
S. R. US 6 WEATHER

SEC. Springfield Twp TEMP

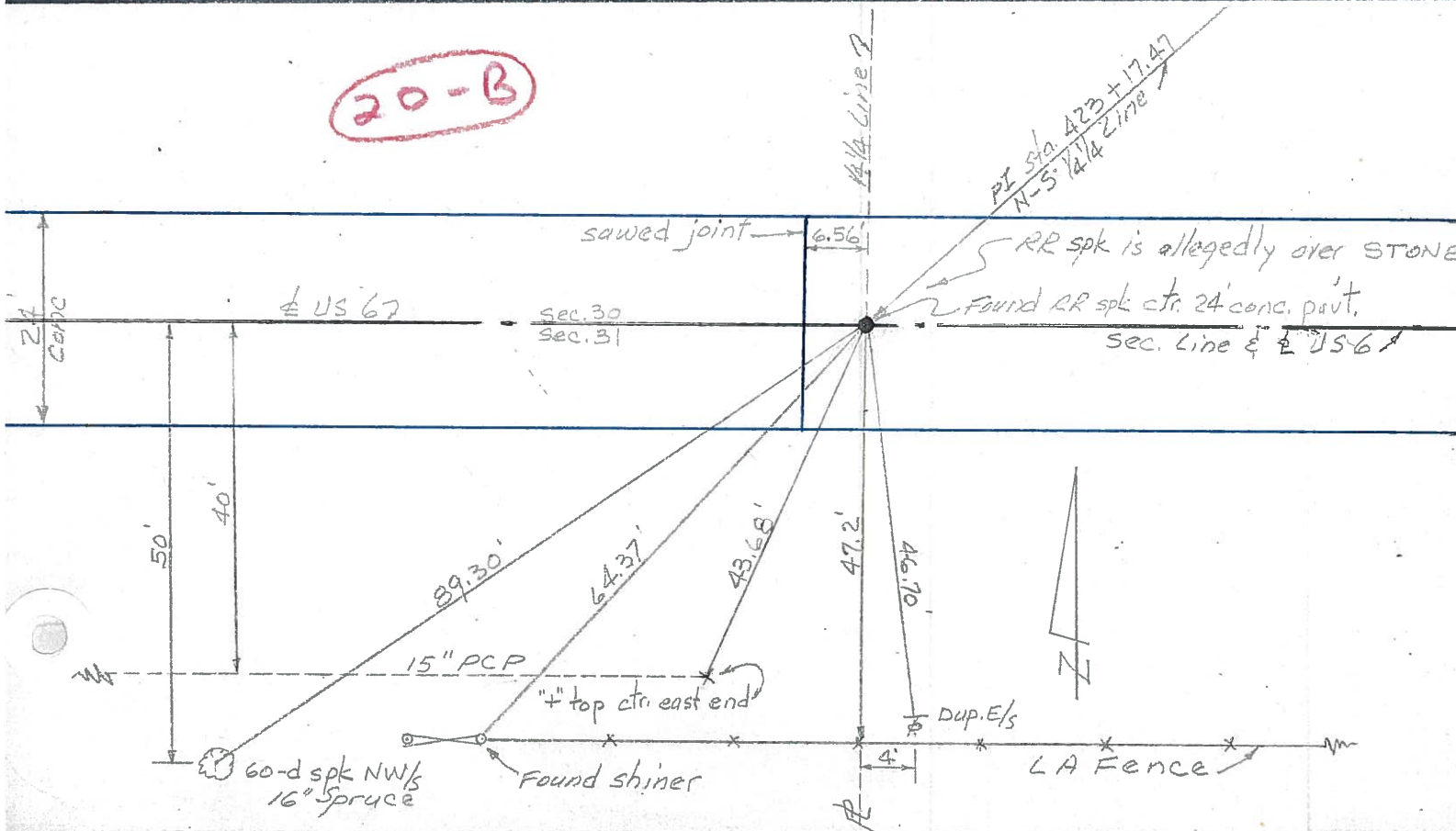
DESCRIPTION CONTROL POINTS JOB NO.

"+" top ctr. both ends

21



20-B





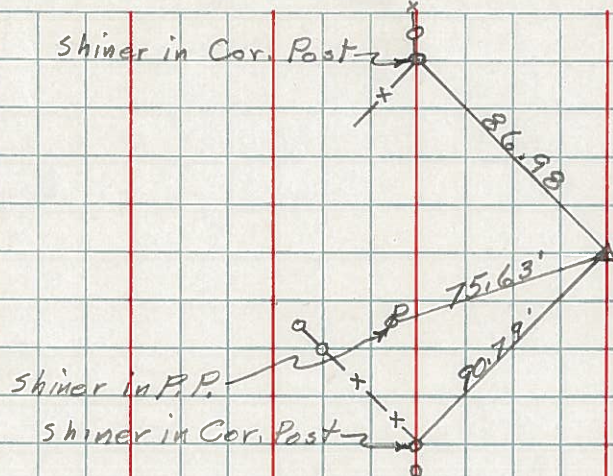
PERSONNEL	TITLE	PERSONNEL	TITLE
Hoover		Young	
Ruffer		Mahler	
Hoff			
Delventhal			

COUNTY Williams DATE 12-8-60  
 S. R. 6 WEATHER Partly Cloudy  
 SEC. \_\_\_\_\_ TEMP. 30°

DESCRIPTION \_\_\_\_\_ LEFT \_\_\_\_\_ CENTER LINE \_\_\_\_\_ RIGHT \_\_\_\_\_ JOB NO. \_\_\_\_\_

132.

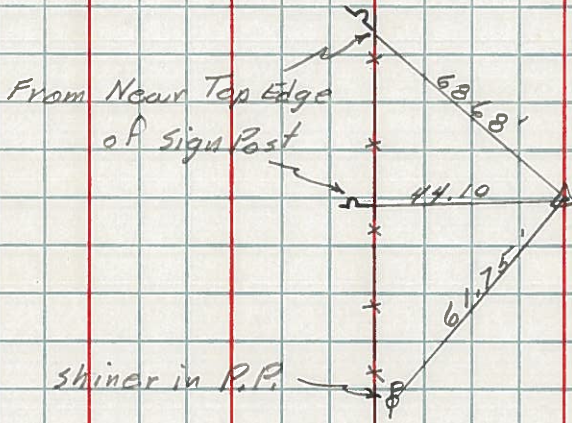
(21)



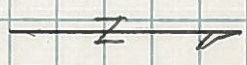
Sta. 436+38.87  
 Found R.R. Spk.  
 Int. Co. Rd. 20

135.

(21-A)

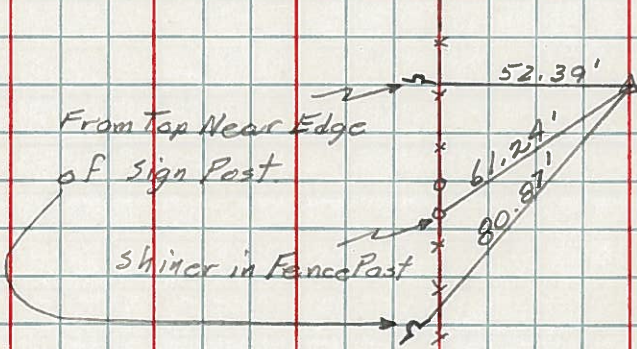


Sta. 463+15.15  
 Found R.R. Spk.



140.

(23)



Sta. 592+30.10  
 Found R.R. Spk.



PERSONNEL TITLE PERSONNEL TITLE

Louys

COUNTY Wi.

DATE 2-28-58

S. R. 6

WEATHER \_\_\_\_\_

SEC Relocation Over Rt. #384

TEMP. 40°

DESCRIPTION Witnesses to Control Points

LEFT

CENTER LINE

RIGHT

JOB NO. \_\_\_\_\_

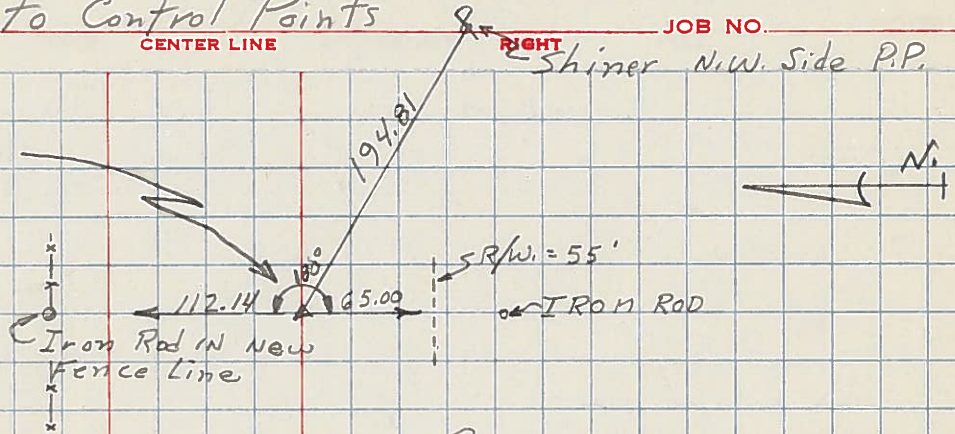
Shiner N.W. Side P.P.

140.

P.I. - Sta. 542 + 30.10

$\Delta = 0^\circ - 03' RT.$

Fd Stone (R.R. SPK.)



23

22-A

139

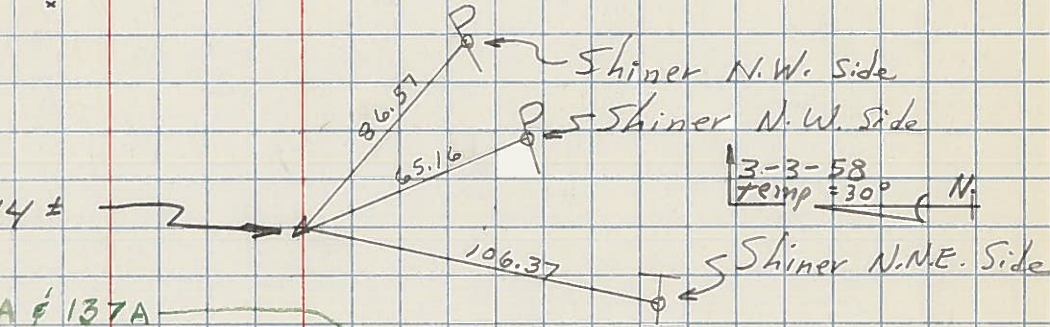
P.O.T. - Sta. 523 + 44 ±

$\Delta$  Rt. #191

REFER - OPPOSITE P<sub>2</sub>-138A & 137A

138 - Sta. 504 + 00 P.O.T. (IRON BOLT ON  $\Delta$ )

137 - Sta. 500 + 00 P.O.T. (TACKED HUB ON  $\Delta$ )



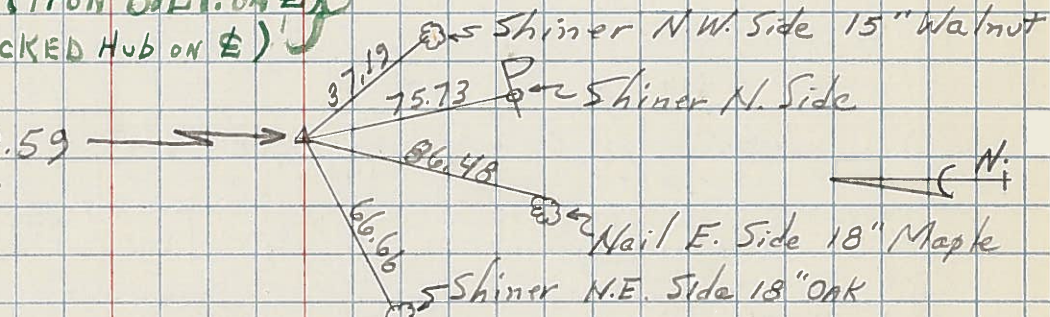
22

136

P.I. - Sta. 489 + 93.59

$\Delta = 0^\circ - 01' - 20" LT.$

Fd Stone (R.R. SPK.)

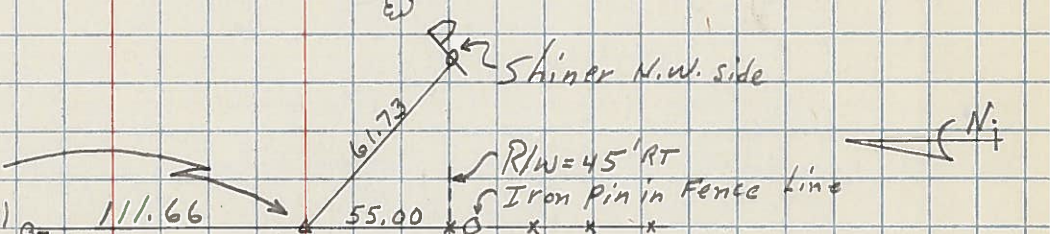


21-A

135

P.I. - Sta. 463 + 15.15

$\Delta = 0^\circ - 08' LT.$  (Fd IRON PIN)



34A

134

134 - Sta. 449 + 79.69 - NO ANGLE - (STONE - R.R. SPK.)

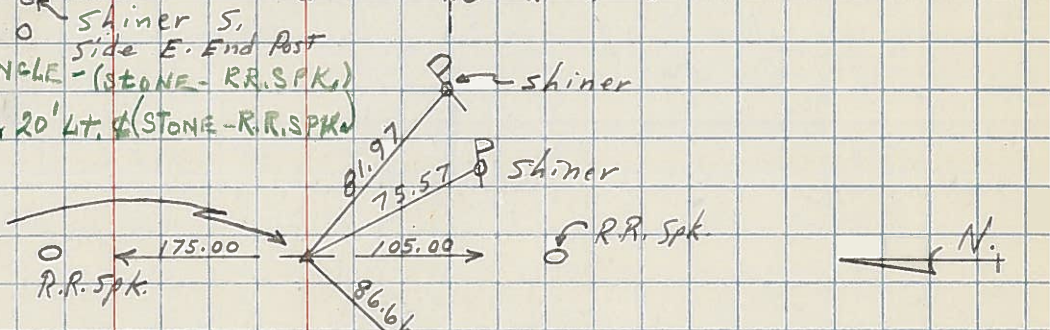
133 - Sta. 444 + 10.83 - 0, 20' LT. (STONE - R.R. SPK.)

132

P.I. - Sta. 436 + 38.87

$\Delta = 0^\circ - 14' - 20" RT$

(EST R.R. SPK.)



21