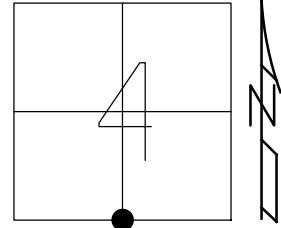


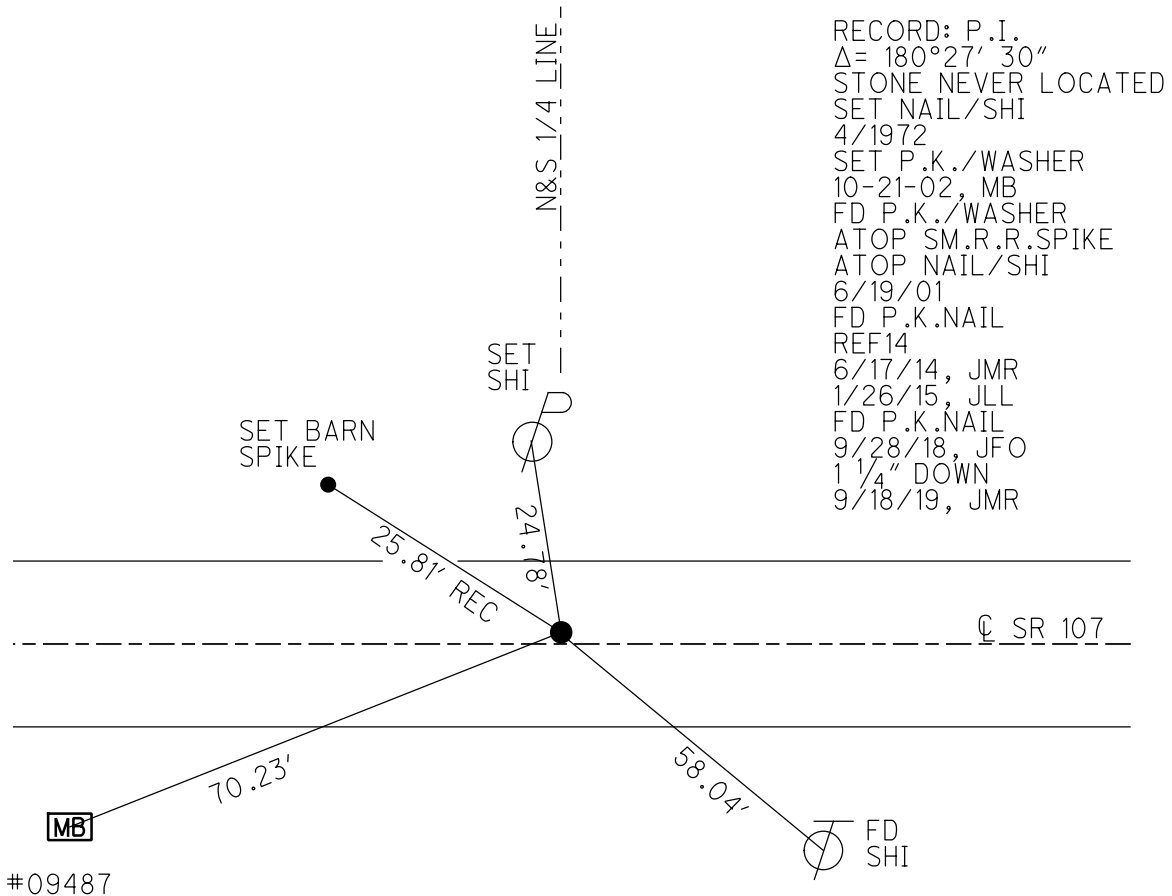
O.D.O.T. DISTRICT 2 SURVEY OFFICE (USE ONLY)

PERSONNEL \_\_\_\_\_ REFERENCE NO. 14 SHEET 15 OF 16  
 NOTES RHOADES DATE 9/28/18 ROUTE SR 107  
 H.C. O'DONNELL WEATHER CLEAR COUNTY WILLIAMS  
 R.C. RHOADES TEMP. 60° TOWNSHIP SUPERIOR  
 DWG BY NIESE PID 105474 SECTION 4  
 T 7 N R 2 E

TYPE MONUMENT P.K. NAIL  
 ON SURFACE - BELOW ON  
 OFFSET  $\text{C}$  PAVEMENT 1.8' LT : ~~RT~~  
9.0' TO LT EDGE PAVEMENT  
 STATION: 347+66.28



HORIZ.DATUM: NAD83(2011) GEOID: 2012A  
 GRID: NORTHING: 706592.439 EASTING: 1382548.622

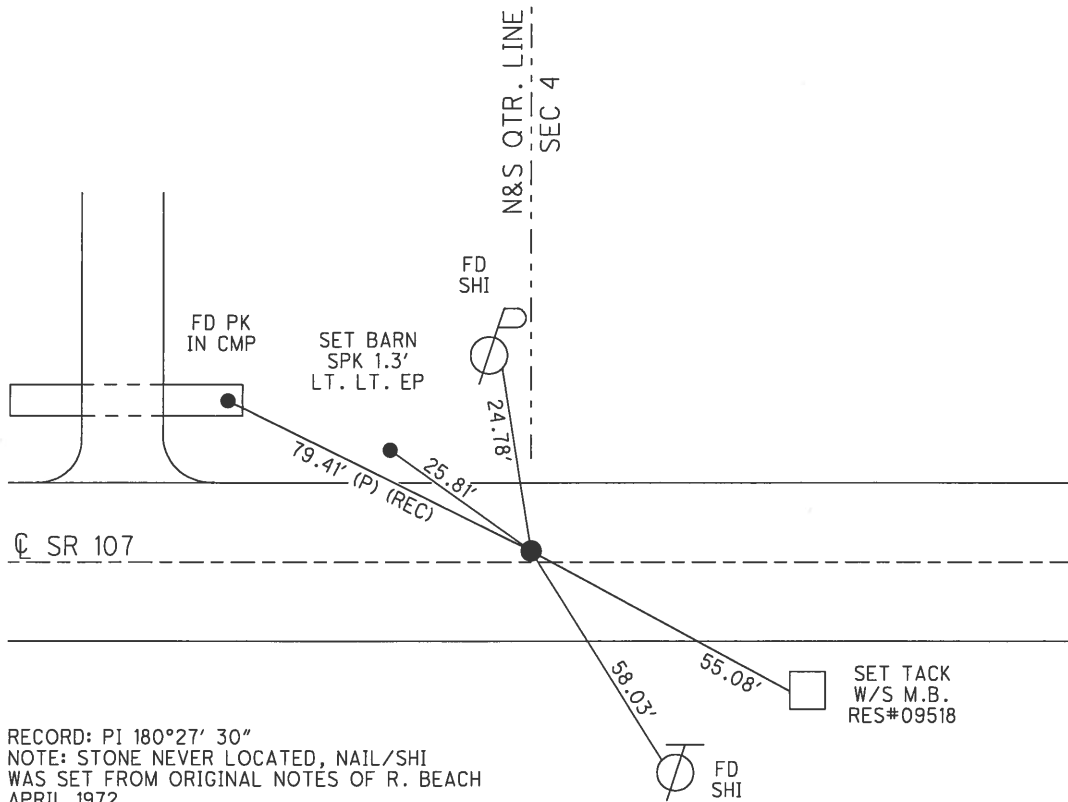
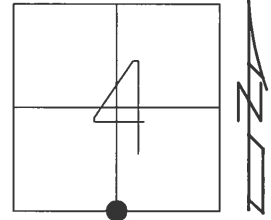


RECORD: P.I.  
 $\Delta = 180^{\circ}27'30''$   
 STONE NEVER LOCATED  
 SET NAIL/SHI  
 4/1972  
 SET P.K./WASHER  
 10-21-02, MB  
 FD P.K./WASHER  
 ATOP SM.R.R.SPIKE  
 ATOP NAIL/SHI  
 6/19/01  
 FD P.K.NAIL  
 REF14  
 6/17/14, JMR  
 1/26/15, JLL  
 FD P.K.NAIL  
 9/28/18, JFO  
 1 1/4" DOWN  
 9/18/19, JMR

O.D.O.T. DISTRICT 2 SURVEY OFFICE (USE ONLY)

PERSONNEL \_\_\_\_\_ REFERENCE NO. 14 SHEET 1 OF 25  
 NOTES RHOADES DATE 6-17-14 ROUTE SR 107  
 H.C. RHOADES WEATHER CLOUDY, WINDY COUNTY WILLIAMS  
 R.C. MEYER TEMP. 85° TOWNSHIP SUPERIOR  
 SECTION 4  
 T 7 N R 2 E

TYPE MONUMENT P.K.NAIL  
 ON SURFACE - ~~BELOW~~ ON \_\_\_\_\_  
 LEFT - ☉ PAV'T - ~~RIGHT~~ 1.8'  
9' TO LT EDGE PAVEMENT  
 S.L.M. 347+66.28  
 Grid: Northing: 706592.439 Easting: 1382548.622

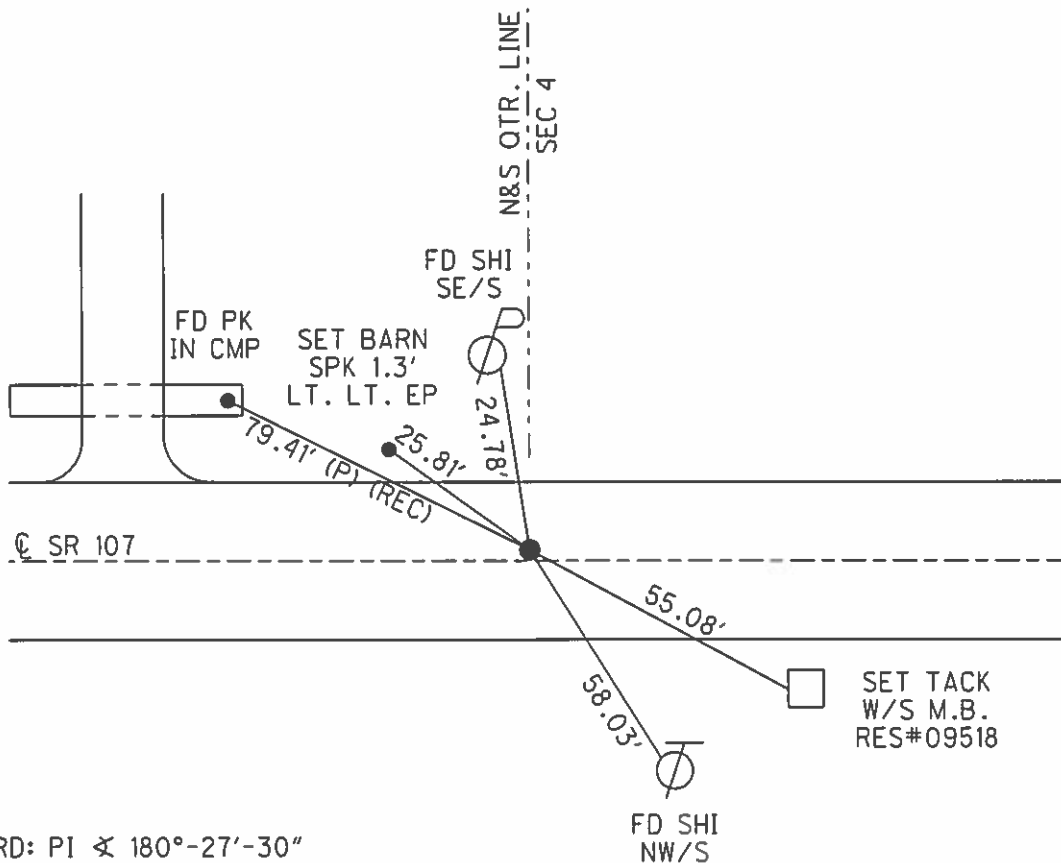
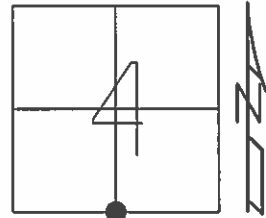


RECORD: PI 180°27' 30"  
 NOTE: STONE NEVER LOCATED, NAIL/SHI  
 WAS SET FROM ORIGINAL NOTES OF R. BEACH  
 APRIL 1972  
 SET PK/WASHER  
 10-21-02, M.B.  
 GPS, REF14  
 6-17-14, JMR  
 FD PK/WASHER  
 ATOP SM RR SPIKE  
 ATOP NAIL/SHI  
 6/19/01  
 UNCOVERED POINT  
 AFTER CHIP AND SEAL  
 1/26/15, JLL

O.D.O.T. DISTRICT 2 SURVEY OFFICE (USE ONLY)

PERSONNEL \_\_\_\_\_ REFERENCE NO. 14 SHEET 15 OF 18  
 NOTES RHOADES DATE 6-17-14 ROUTE SR 107  
 H.C. RHOADES WEATHER CLOUDY, WINDY COUNTY WILLIAMS  
 R.C. MEYER TEMP. 85° TOWNSHIP SUPERIOR  
 \_\_\_\_\_ SECTION 4  
 \_\_\_\_\_ T 7 N R 2 E

TYPE MONUMENT P.K.NAIL  
 ON SURFACE - ~~BELOW~~ ON \_\_\_\_\_  
 LEFT - ☉ PAV'T - ~~RIGHT~~ 1.8'  
9' TO LT EDGE PAVEMENT  
 S.L.M. 347+72  
 Grid: Northing: 706592.439 Easting: 1382548.622



RECORD: PI  $\sphericalangle$  180°-27'-30"  
 NOTE: STONE NEVER LOCATED, NAIL/SHI  
 WAS SET FROM ORIGINAL NOTES OF R. BEACH  
 APRIL 1972

RESET PK/WASHER  
 10-21-02, M.B.

FD PK/WASHER ATOP SM RR SPIKE  
 ATOP NAIL/SHI, 6/19/01

UNCOVERED POINT  
 AFTER CHIP AND SEAL  
 1/26/15, JLL

GPS, REF14  
 6-17-14, JMR

# O.D.O.T. DISTRICT 2 SURVEY OFFICE

PERSONNEL

REFERENCE NO. 14

SHEET 14 OF 16

NOTES MOSE

H.C. MOSE

R.C. CANTERBURY

DATE 6-19-01

WEATHER CLEAR

TEMP. +95°

ROUTE S.R. #107

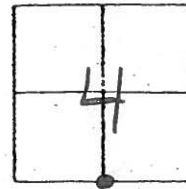
COUNTY WILLIAMS

TOWNSHIP SUPERIOR

SECTION 4

T 7 N R 2 E

TYPE MONUMENT P.K. / WASHER ATOP Sm. R.R. SPIKE ATOP NAIL/SHE.  
 ON SURFACE - ~~BELOW~~ SURFACE  
 LEFT - Q PAV'T. - ~~RIGHT~~ 1.8' LT.  
8.3' TO LT. EDGE PAVEMENT  
 S.L.M. 347+72



RECORD: P.I.  $\angle$  180°-27'-30"

NOTE: STONE NEVER LOCATED, NAIL/SHE.

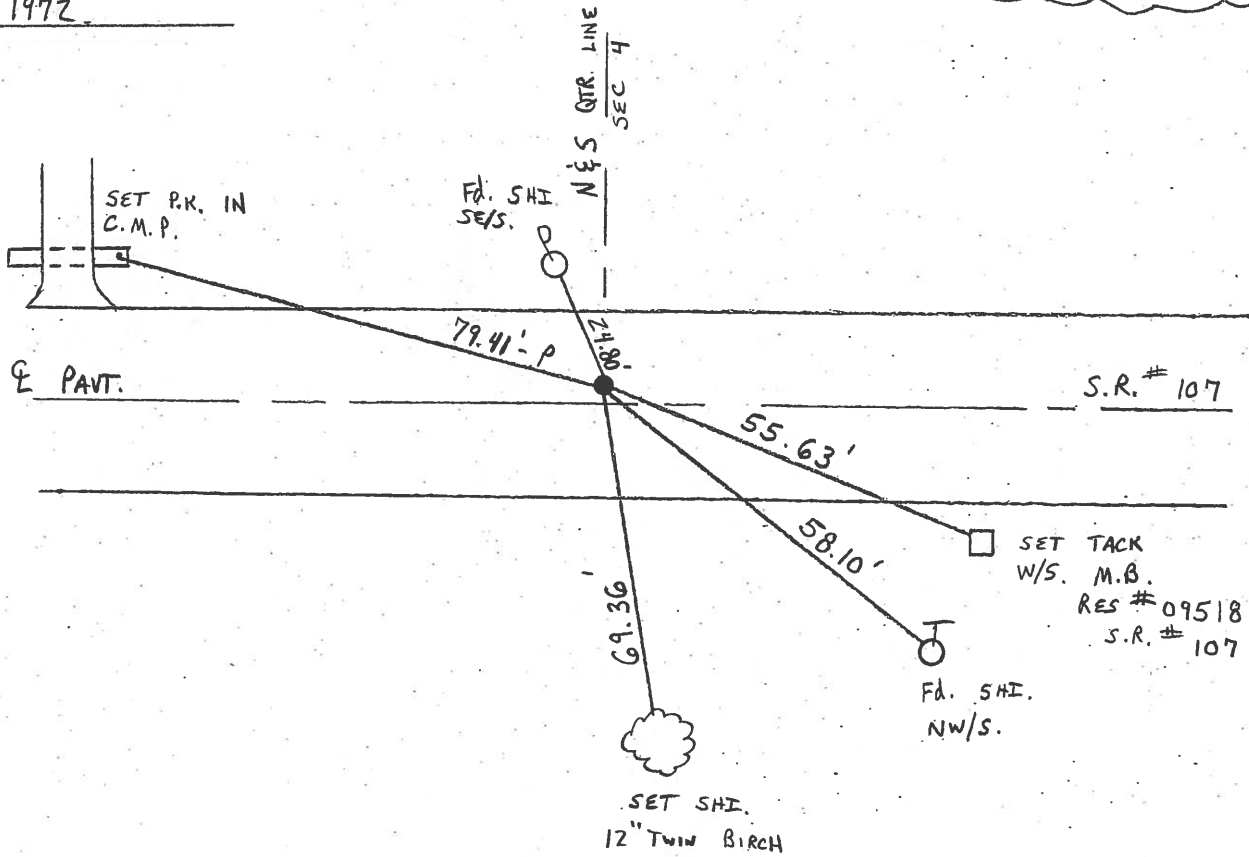
WAS SET FROM ORIGINAL NOTES OF R. BEACH

APRIL-1972

RESET P.K./WASHER

10-21-02

M.B.



# O.D.O.T. DISTRICT 2 SURVEY OFFICE

PERSONNEL

REFERENCE NO. 14

SHEET 14 OF 18

NOTES LOHRKE

H.C. CURTIS

R.C. ROMETO

DATE 5-21-92

WEATHER CLEAR

TEMP. +75

ROUTE S.R. 107

COUNTY Williams

TOWNSHIP SUPERIOR

SECTION 4

T. 7 N. R. 2 E

Sm. R.R Spike

TYPE MONUMENT over Nail-Shi SET PK/WASHER

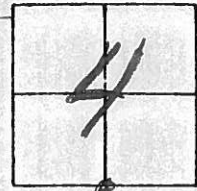
ON SURFACE - BELOW Yes

LEFT - C PAV'T. - RIGHT 2.3

8.3 TO Lt EDGE PAVEMENT

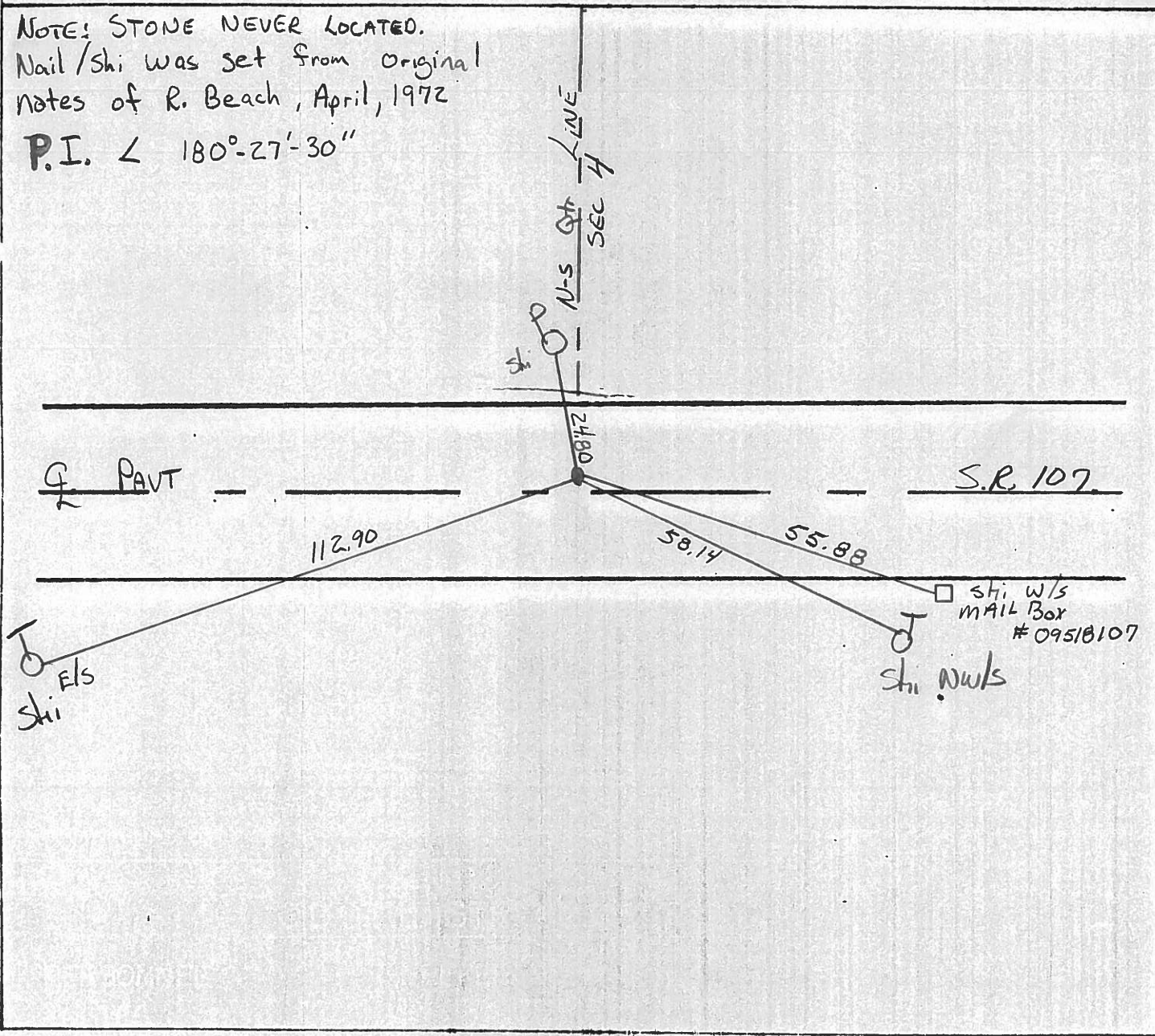
S.L.M. 347+68

8-11-92 AC



NOTE: STONE NEVER LOCATED.  
Nail/Shi was set from original notes of R. Beach, April, 1972

P.I.  $\angle$  180°-27'-30"



# O.D.O.T. DISTRICT 2 SURVEY OFFICE

PERSONNEL

REFERENCE NO. 14

SHEET 15 OF     

NOTES: LOENRKE

H.C.: BARNHISEL

R.C.: Hoffman

DATE 4-3-85

WEATHER WINDY, Clear

TEMP. 50

ROUTE SR 107

COUNTY WILLIAMS

TOWNSHIP SUPERIOR

SECTION 4

T. 7 N. R. 3 W.

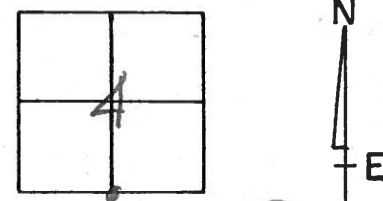
TYPE MONUMENT Set Nail / Shinner

ON SURFACE - ~~BELOW~~ ON SURFACE

LEFT - ~~C PAV'T.~~ RIGHT 2.1 LF.

7.8 TO LF EDGE PAVEMENT

S.L.M. 347+70



NOTE: Nail & Shi Set Using old Ref  
 Origin Notes of R. Beach, 4-1972  
 No STONE EVER LOCATED.  
 P.I.  $\angle$   $180^{\circ}27'30''$

Set Sm R.R. Spk  
5-23-85 C.L.

