

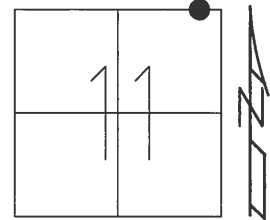
O.D.O.T. DISTRICT 2 SURVEY OFFICE (USE ONLY)

PERSONNEL _____ REFERENCE NO. 18 D SHEET 15 OF 25

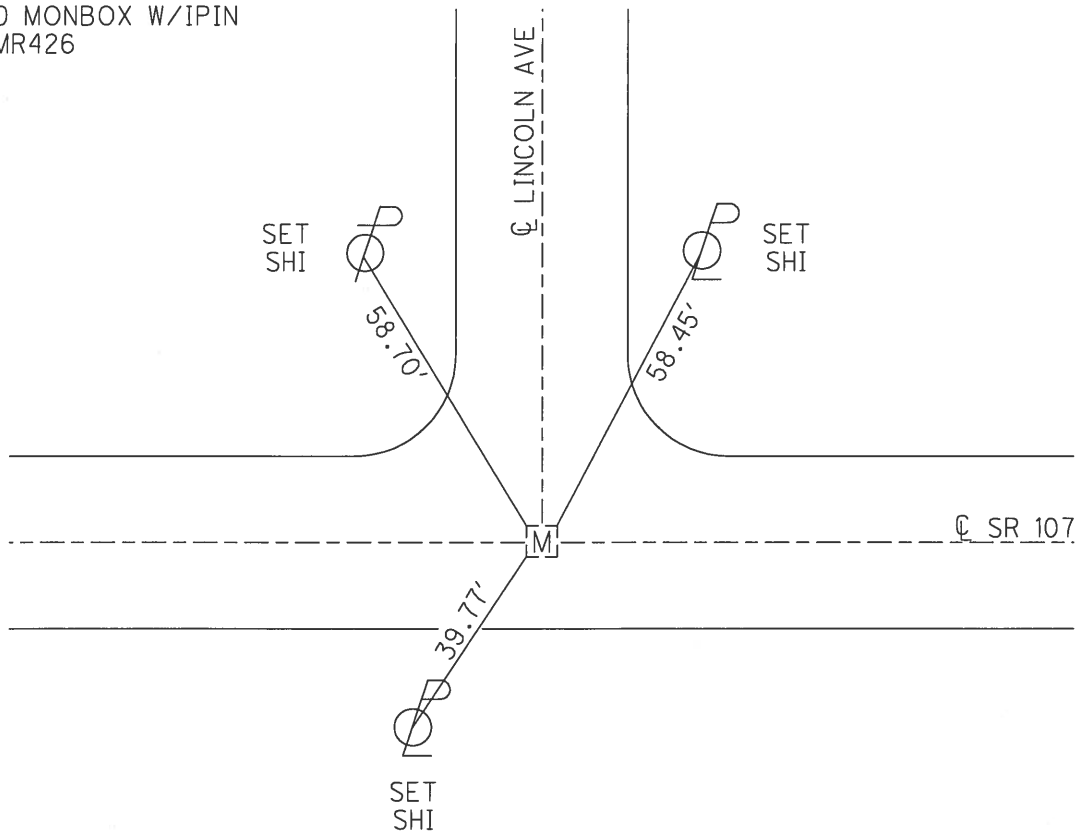
NOTES HOMAN DATE 4/19/17 ROUTE SR 107
H.C. HOMAN WEATHER CLOUDY COUNTY WILLIAMS
R.C. HELDMAN TEMP. 65° TOWNSHIP SUPERIOR
SECTION 11
T 7 N R 2 E

TYPE MONUMENT MONBOX W/IPIN
ON SURFACE - ~~BELOW~~ ON
LEFT - ☉ PAV'T - RIGHT ON
- TO - EDGE PAVEMENT
S.L.M. 474+47.09

GRID: NORTHING: 706353.850 EASTING: 1395226.897



RECORD:
FD MONBOX W/IPIN
JMR426



ENTRANCE OLD
ODOT GARAGE

PERSONNEL TITLE PERSONNEL TITLE

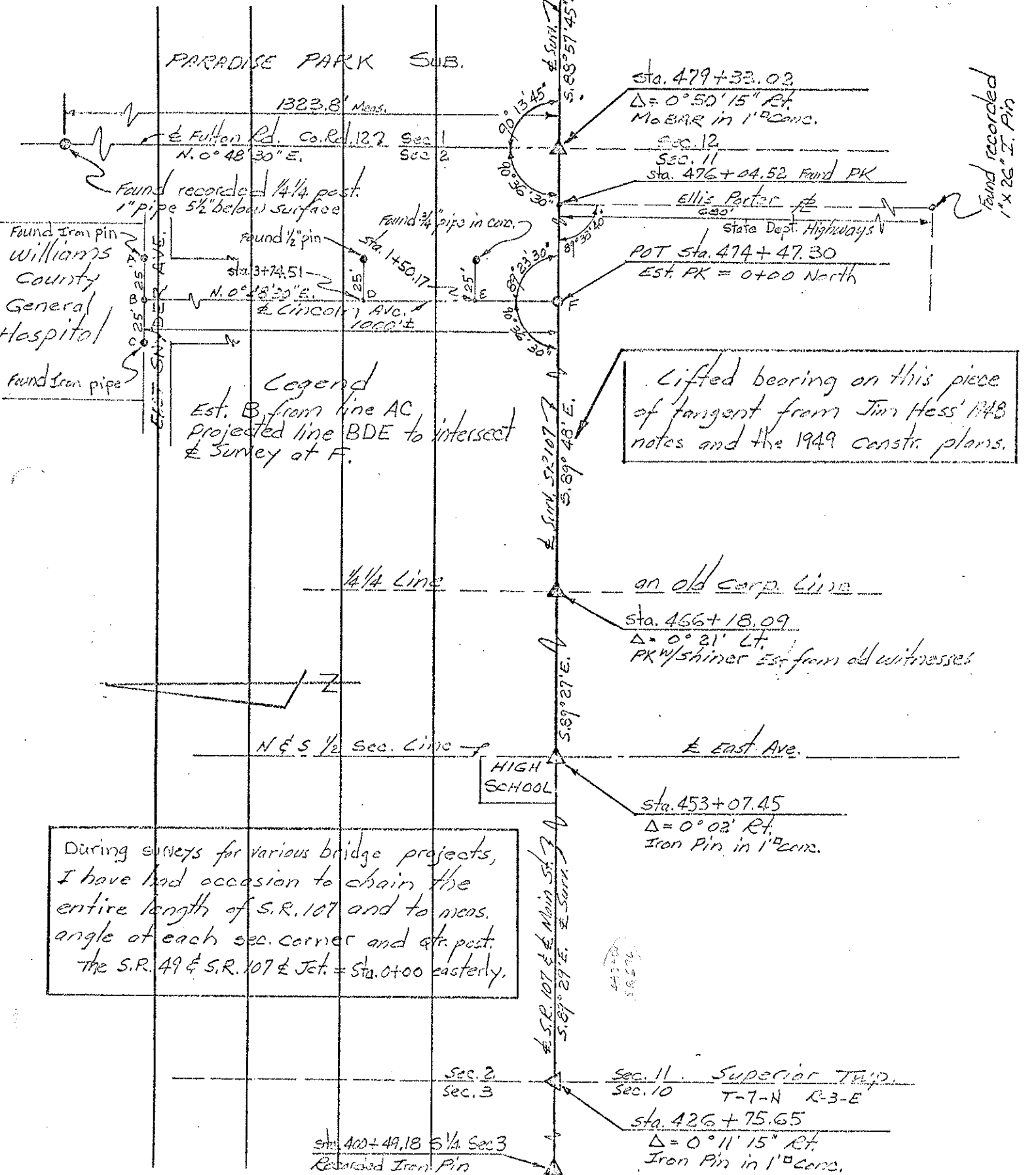
Red Beach
Newcomb
Knappe
Wise

COUNTY Williams DATE Nov. 1968

S. R. 107 WEATHER

SEC. 896 - 11.05 TEMP.

DESCRIPTION ALIGNMENT LEFT CENTER LINE RIGHT JOB NO. 02734



Legend
 Est. B from line AC
 Projected line BDE to intersect
 E Survey at F.

Lifted bearing on this piece
 of fangert from Jim Hess' 1948
 notes and the 1949 constr. plans.

During surveys for various bridge projects,
 I have had occasion to chain the
 entire length of S.R. 107 and to meas.
 angle of each sec. corner and ctr. post.
 the S.R. 49 & S.R. 107 & Jct. = Sta. 0+00 easterly.

Found recorded
 1" x 26" I. Pin

Found Iron pin
 Williams
 County
 General
 Hospital

Found Iron pipe

HIGH SCHOOL

44300
 S 89° 27'