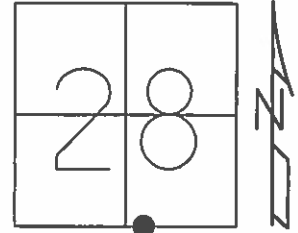


O.D.O.T. DISTRICT 2 SURVEY OFFICE (USE ONLY)

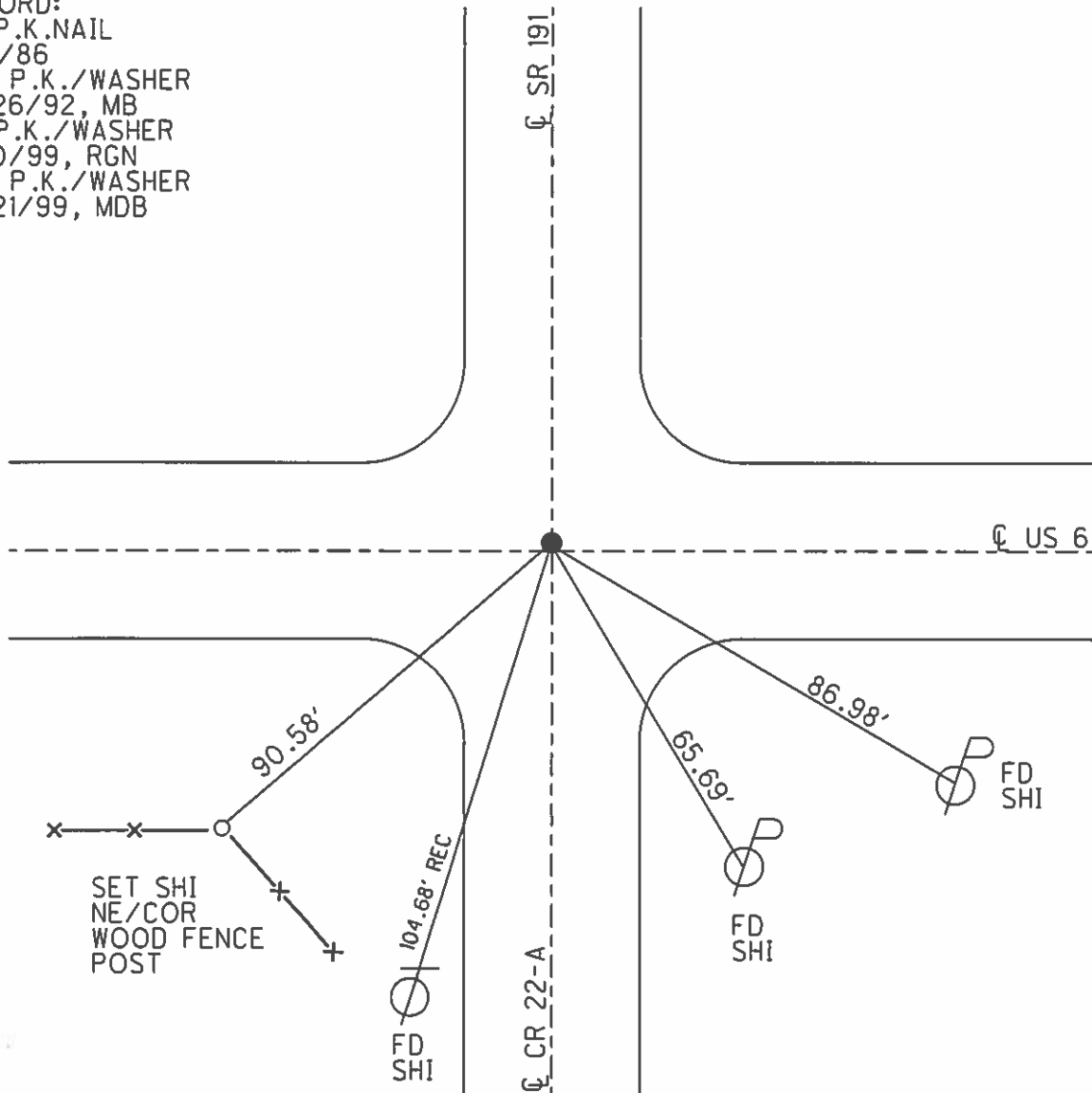
PERSONNEL _____ REFERENCE NO. 0 SHEET 1 OF 34
 NOTES NUHFER DATE 4/18/06 ROUTE SR 191, US 6
 H.C. MIKLOVIC WEATHER FAIR COUNTY WILLIAMS
 R.C. HANKE TEMP. 57° TOWNSHIP SPRINGFIELD
 _____ SECTION 28
 _____ T 6 N R 4 E

TYPE MONUMENT P.K./WASHER
 ON SURFACE - ~~BELOW~~ ON
 LEFT - ☉ PAV'T - RIGHT ON, 1' LT ☉ US 6
- TO - EDGE PAVEMENT
 S.L.M. 0+00, US 6 33+616.5



GRID: NORTHING: _____ EASTING: _____

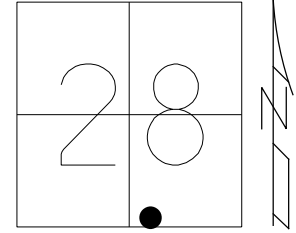
RECORD:
 FD P.K.NAIL
 6/2/86
 SET P.K./WASHER
 10/26/92, MB
 FD P.K./WASHER
 5/10/99, RGN
 SET P.K./WASHER
 10/21/99, MDB



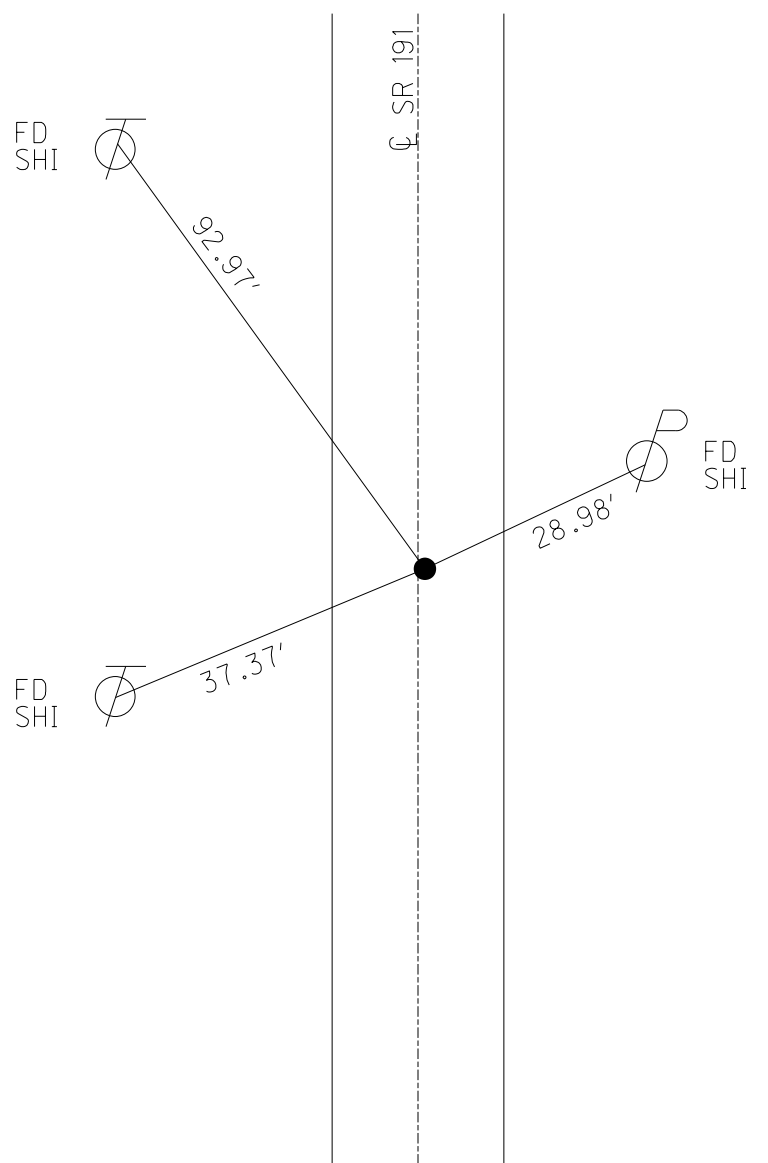
O.D.O.T. DISTRICT 2 SURVEY OFFICE (USE ONLY)

PERSONNEL _____ REFERENCE NO. 1 SHEET 2 OF 34
 NOTES ASTON DATE 3-29-24 ROUTE SR 191
 H.C. RHOADES WEATHER SUNNY COUNTY WILLIAMS
 R.C. ASTON TEMP. 46° TOWNSHIP SPRINGFIEND
 DWG BY RHOADES PID PAVETRAIN SECTION 28
 T 6 N R 4 E

TYPE MONUMENT MAG/WASHER
 ON SURFACE - ~~BELOW~~ ON
 OFFSET \varnothing PAVEMENT 0.8' ~~±~~ : RT
10' TO RT EDGE PAVEMENT
 STATION: 4+18



HORIZ.DATUM: NAD83 2011 GEOID: NAVD88 2018
 GRID: NORTHING: 652906.276 EASTING: 1445832.566

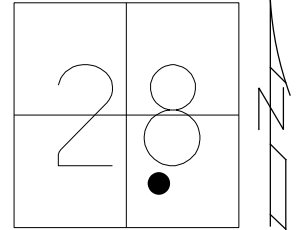


RECORD:
 SET MAG/WASHER
 REF1
 6/22/22, TDN
 FD MAG/WASHER
 2/2/23, JMR
 FD MAG/W
 3-29-24, JMR

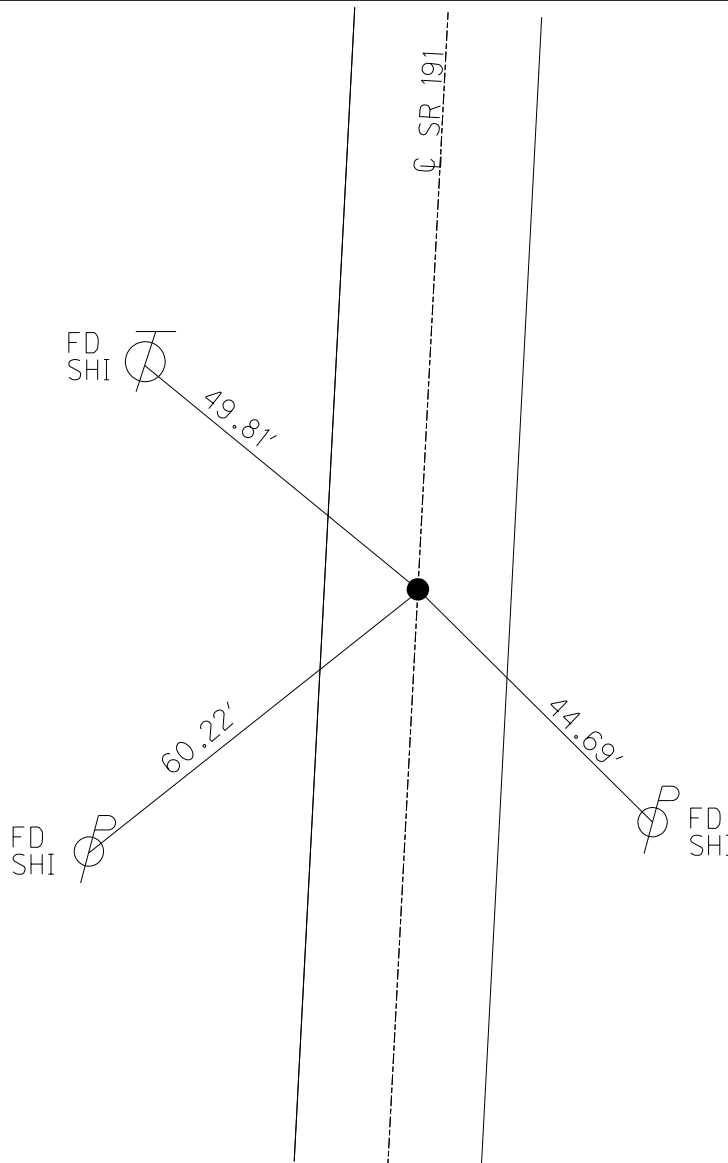
O.D.O.T. DISTRICT 2 SURVEY OFFICE (USE ONLY)

PERSONNEL _____ REFERENCE NO. 2 SHEET 3 OF 34
 NOTES ASTON DATE 3-29-24 ROUTE SR 191
 H.C. RHOADES WEATHER SUNNY COUNTY WILLIAMS
 R.C. ASTON TEMP. 46° TOWNSHIP SPRINGFIEND
 SECTION 28
 DWG BY RHOADES PID PAVETRAIN T 6 N R 4 E

TYPE MONUMENT MAG/WASHER
 ON SURFACE - ~~BELOW~~ ON
 OFFSET C PAVEMENT ON LT : RT
10.4' TO LT EDGE PAVEMENT
 STATION: 13+31.9



HORIZ.DATUM: NAD83 2011 GEOID: NAVD88 2018
 GRID: NORTHING: 653821.690 EASTING: 1445890.441



RECORD: P.I.
 C SURVEY 6/1972
 $\Delta = 0^\circ 7' \text{ RT}$
 FD P.K.SHANK
 2" DOWN
 6/25/84, CL
 FD P.K.NAIL
 10/3/88, IS
 SET P.K.NAIL
 11/27/89, DJC
 FD P.K.NAIL
 4/18/06, RGN
 FD P.K./WASHER
 6/24/11, MC
 SET MAG/WASHER
 2/3/12
 SV2
 2/6/12, SAH
 FD MAG/WASHER
 REF2
 6/22/22, TDN
 2/2/23, JMR
 FD MAG/W
 3-29-24, JMR

O.D.O.T. DISTRICT 2 SURVEY OFFICE (USE ONLY)

PERSONNEL

REFERENCE NO. 2 A

SHEET 4 OF 34

NOTES ASTON DATE 3-29-24
 H.C. RHOADES WEATHER SUNNY
 R.C. ASTON TEMP. 46°

ROUTE SR 191
 COUNTY WILLIAMS
 TOWNSHIP SPRINGFIEND
 SECTION 28
 T 6 N R 4 E

DWG BY RHOADES PID PAVETRAIN

TYPE MONUMENT MAG SHANK

ON SURFACE - ~~BELOW~~ ON

OFFSET \perp PAVEMENT 8.2' ~~TT~~ : RT

2.1' TO RT EDGE PAVEMENT

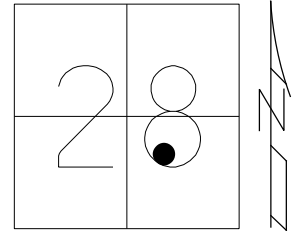
STATION: 20+15.86

HORZ. DATUM: NAD83 2011

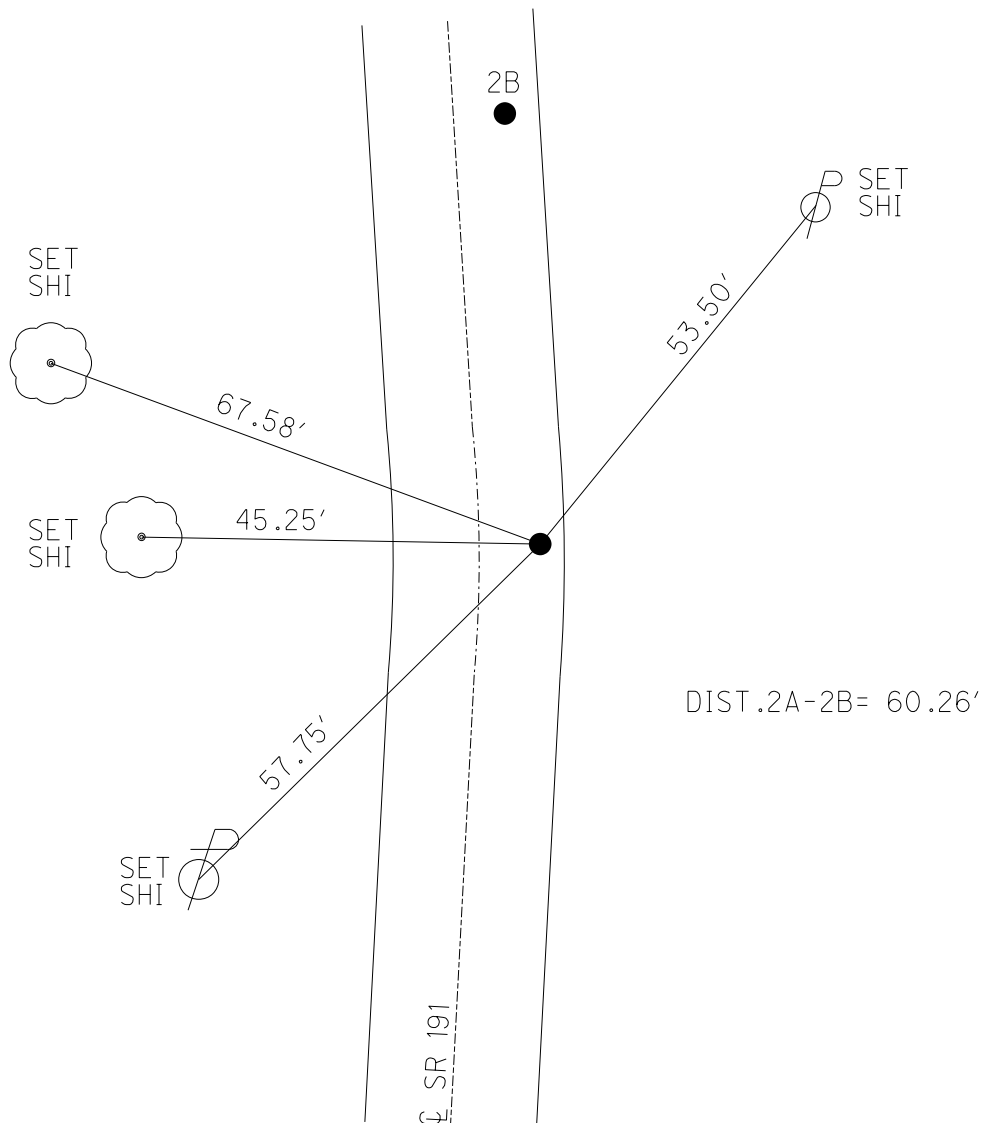
GEOID: NAVD88 2018

GRID: NORTHING: 654503.903

EASTING: 1445938.076



RECORD: P.I.
 $\Delta = 12^{\circ}00'40''$ LT
 SET R.R.SPIKE
 6/25/84, CL
 FD R.R.SPIKE
 10/3/88, IS
 SET R.R.SPIKE
 11/27/89, DJC
 FD R.R.SPIKE
 12/2/04, SAH
 4/18/06, RGN
 6/24/11, MC
 SET MAG/WASHER
 SVA2
 2/6/12, SAH
 FD MAG SHANK
 REFA2
 6/22/22, TDN
 2/2/23, JMR
 FD SHANK
 3-29-24, JMR



O.D.O.T. DISTRICT 2 SURVEY OFFICE (USE ONLY)

PERSONNEL

REFERENCE NO. 2 B

SHEET 5 OF 34

NOTES ASTON DATE 3-29-24

H.C. RHOADES WEATHER SUNNY

R.C. ASTON TEMP. 46°

ROUTE SR 191

COUNTY WILLIAMS

TOWNSHIP SPRINGFIEND

SECTION 28

DWG BY RHOADES PID PAVETRAIN

T 6 N R 4 E

TYPE MONUMENT MAG/WASHER

ON SURFACE - ~~BELOW~~ ON

OFFSET \odot PAVEMENT 2.8' ~~LT~~ : RT

7.3' TO RT EDGE PAVEMENT

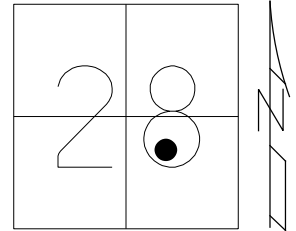
STATION: 21+15

HORZ. DATUM: NAD83 2011

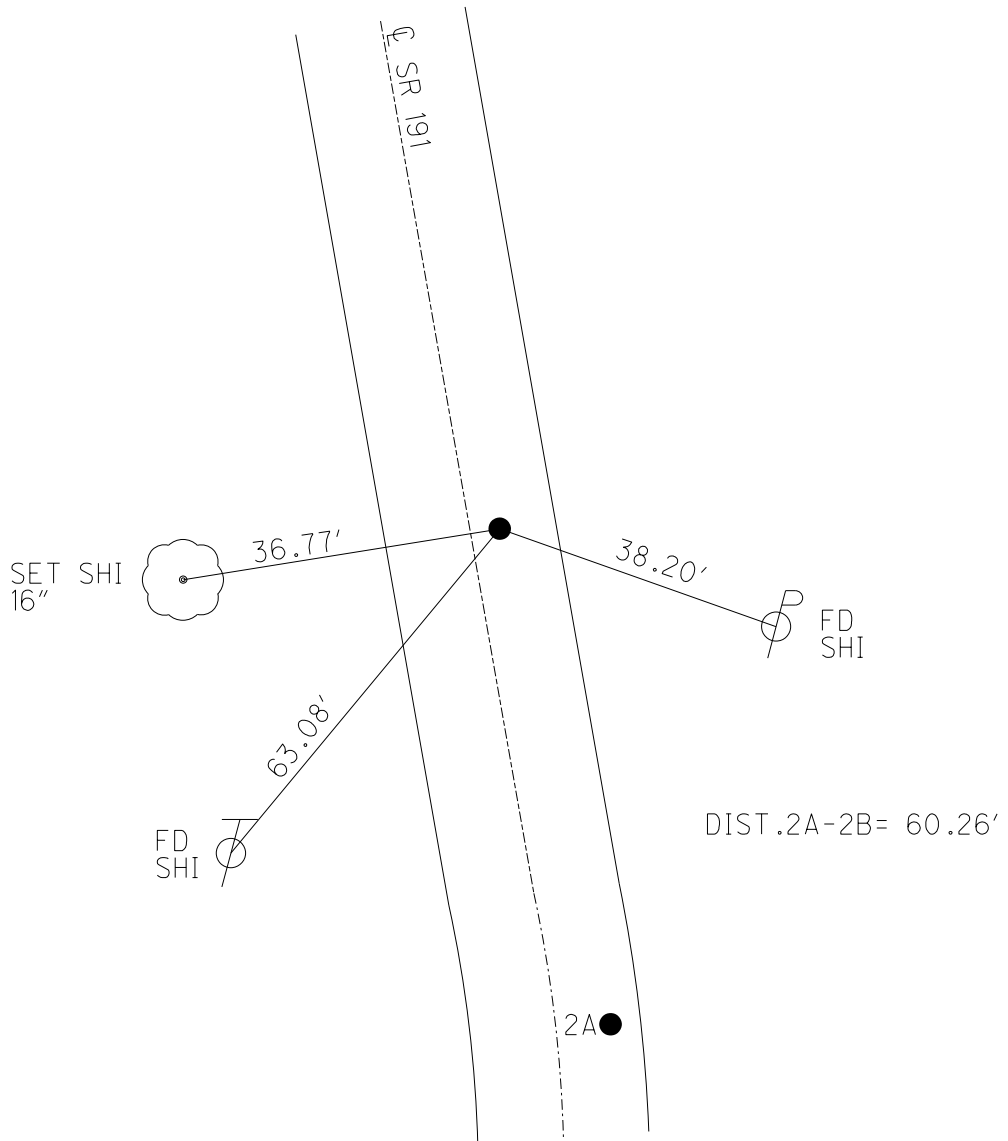
GEOID: NAVD88 2018

GRID: NORTHING: 654563.603

EASTING: 1445929.654



RECORD:
 FD P.K.NAIL
 10/3/88, IS
 SET P.K.NAIL
 11/27/89, DJC
 FD P.K.NAIL
 12/2/04, SAH
 4/18/06, RGN
 6/24/11, MC
 SET MAG/WASHER
 REFB2
 2/6/12, SAH
 FD MAG/WASHER
 REFB2
 6/22/22, TDN
 2/2/23, JMR
 FD MAG/W
 3-29-24, JMR



O.D.O.T. DISTRICT 2 SURVEY OFFICE (USE ONLY)

PERSONNEL

REFERENCE NO. 2 C

SHEET 6 OF 34

NOTES ASTON

DATE 3-29-24

ROUTE SR 191

H.C. RHOADES

WEATHER SUNNY

COUNTY WILLIAMS

R.C. ASTON

TEMP. 46°

TOWNSHIP SPRINGFIEND

SECTION 28

DWG BY RHOADES PID PAVETRAIN

T 6 N R 4 E

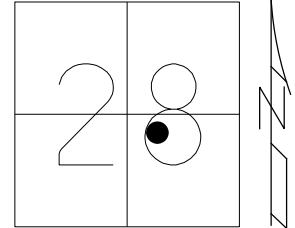
TYPE MONUMENT MAG/WASHER

ON SURFACE - ~~BELOW~~ ON

OFFSET CL PAVEMENT ON ~~LT~~ : RT

10.4' TO RT EDGE PAVEMENT

STATION: 22+91



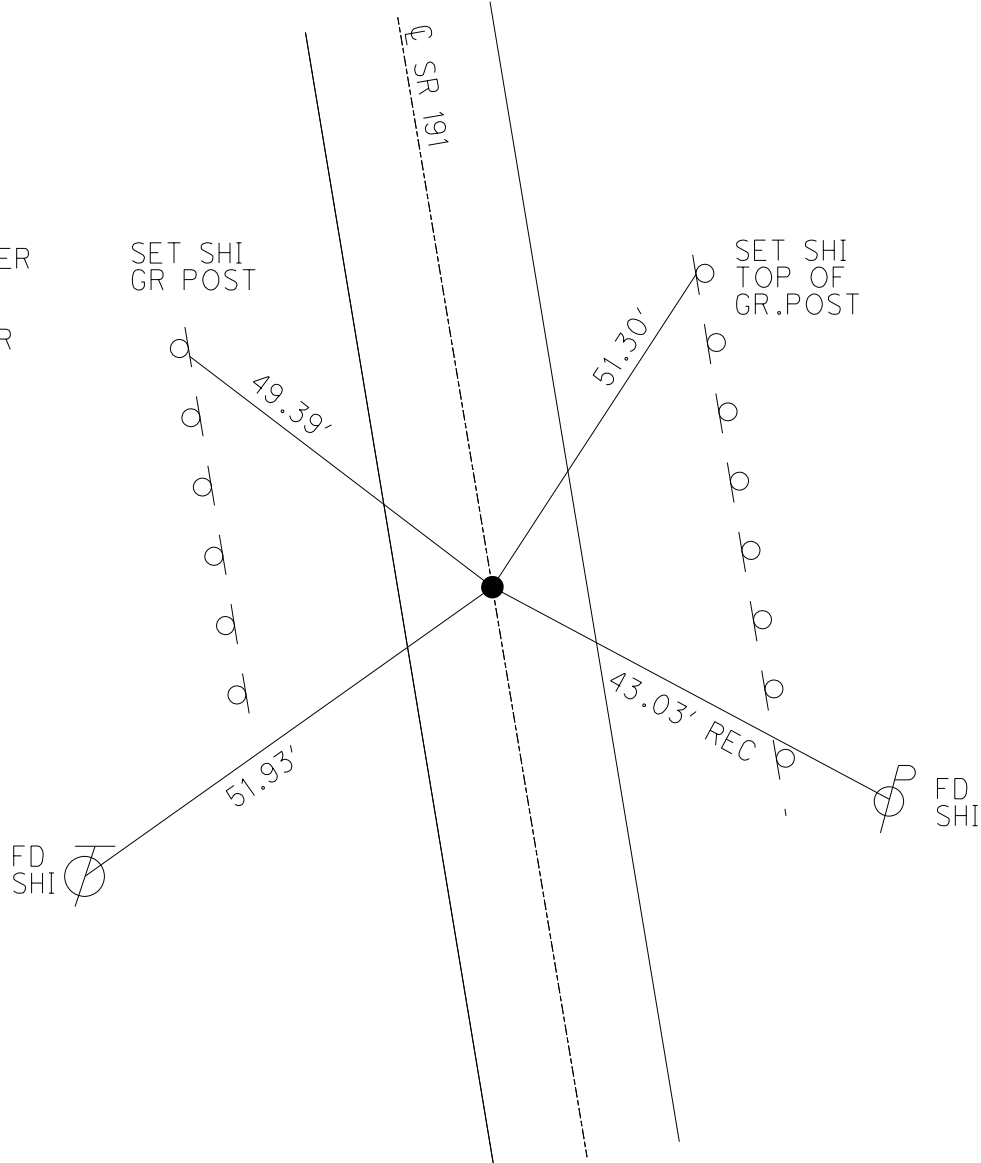
HORZ. DATUM: NAD83 2011

GEOID: NAVD88 2018

GRID: NORTHING: 654774.446

EASTING: 1445899.873

RECORD:
 SET P.K.NAIL
 5/24/84, CL
 10/3/88, IS
 SET P.K.NAIL
 10/31/89, IS
 FD P.K.NAIL
 6/24/11, MC
 SET MAG/WASHER
 REFC2
 2/6/12, SAH
 FD MAG/WASHER
 REFC2, TDN
 2/2/23, JMR
 FD MAG/W
 3-29-24, JMR



O.D.O.T. DISTRICT 2 SURVEY OFFICE (USE ONLY)

PERSONNEL

REFERENCE NO. 3

SHEET 7 OF 34

NOTES ASTON DATE 3-29-24

H.C. RHOADES WEATHER SUNNY

R.C. ASTON TEMP. 46°

ROUTE SR 191

COUNTY WILLIAMS

TOWNSHIP SPRINGFIEND

SECTION 28

DWG BY RHOADES PID PAVETRAIN

T 6 N R 4 E

TYPE MONUMENT MAG/WASHER

ON SURFACE - ~~BELOW~~ ON

OFFSET \odot PAVEMENT 0.3' LT : ~~RT~~

- TO - EDGE PAVEMENT

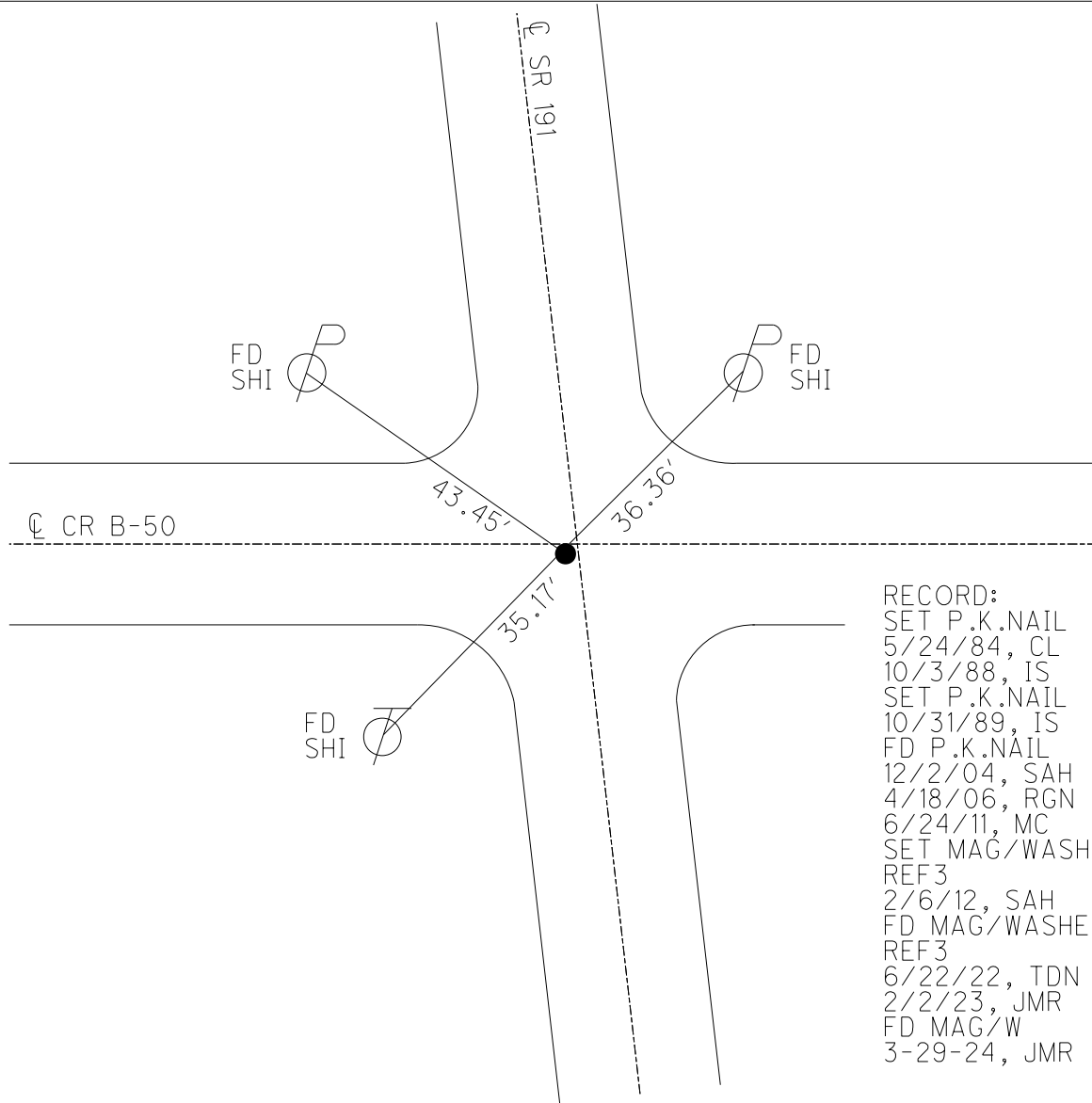
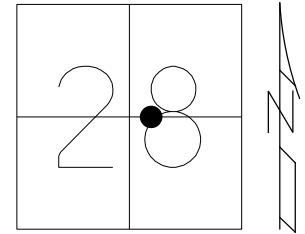
STATION: 26+48

HORZ.DATUM: NAD83 2011

GEOID: NAVD88 2018

GRID: NORTHING: 655127.802

EASTING: 1445849.955



RECORD:
SET P.K.NAIL
5/24/84, CL
10/3/88, IS
SET P.K.NAIL
10/31/89, IS
FD P.K.NAIL
12/2/04, SAH
4/18/06, RGN
6/24/11, MC
SET MAG/WASHER
REF3
2/6/12, SAH
FD MAG/WASHER
REF3
6/22/22, TDN
2/2/23, JMR
FD MAG/W
3-29-24, JMR

O.D.O.T. DISTRICT 2 SURVEY OFFICE (USE ONLY)

PERSONNEL

REFERENCE NO. 4

SHEET 8 OF 34

NOTES ASTON DATE 3-29-24

H.C. RHOADES WEATHER SUNNY

R.C. ASTON TEMP. 46°

ROUTE SR 191

COUNTY WILLIAMS

TOWNSHIP SPRINGFIEND

SECTION 28

DWG BY RHOADES PID PAVETRAIN

T 6 N R 4 E

TYPE MONUMENT MAG NAIL

ON SURFACE - ~~BELOW~~ ON

OFFSET C PAVEMENT 1' LT : ~~RT~~

- TO - EDGE PAVEMENT

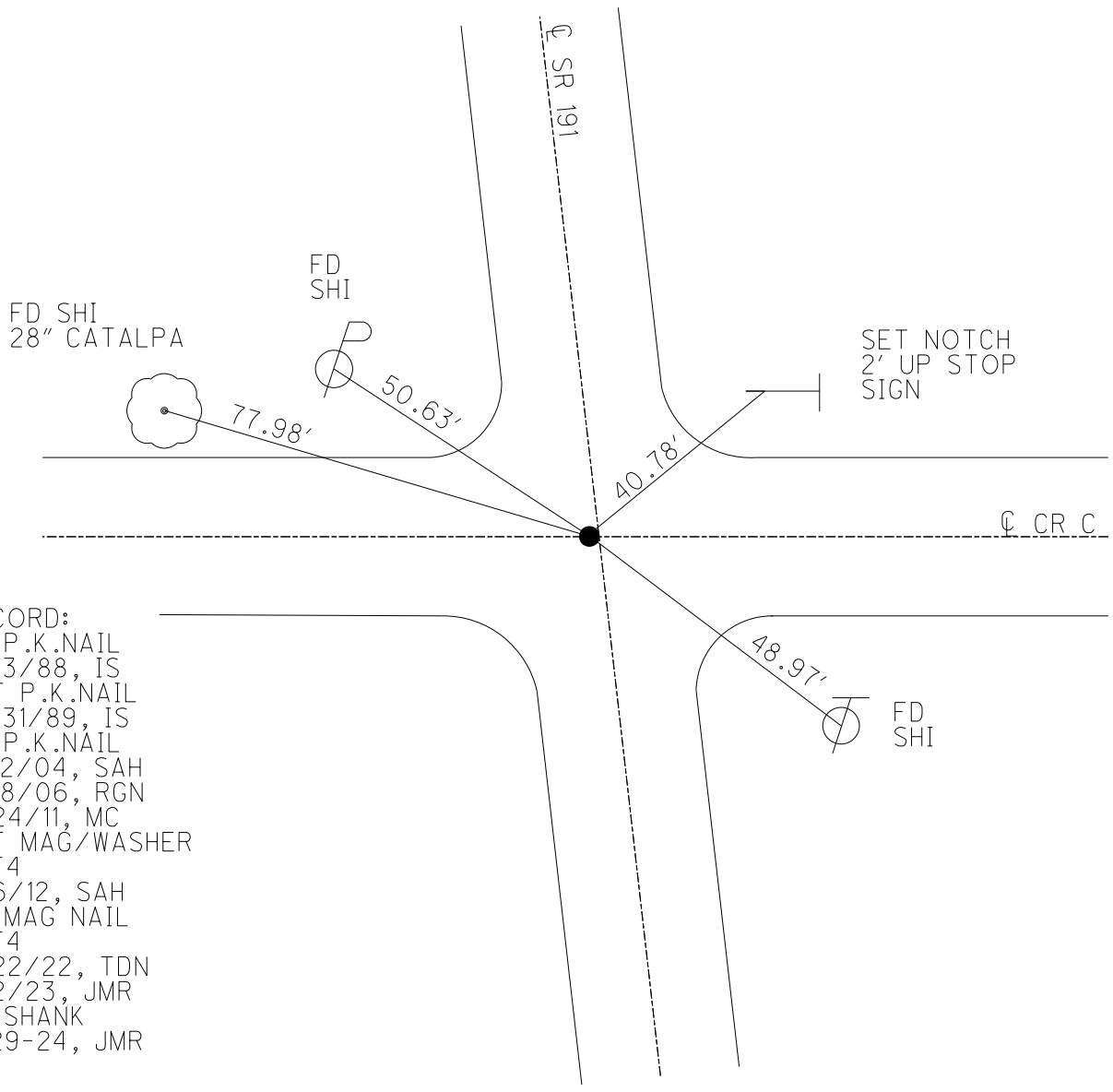
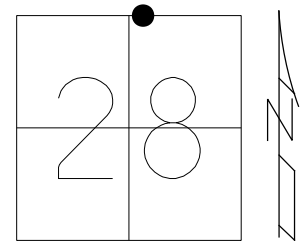
STATION: 53+22

HORZ. DATUM: NAD83 2011

GEOID: NAVD88 2018

GRID: NORTHING: 657776.611

EASTING: 1445482.775

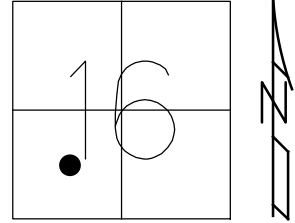


RECORD:
 FD P.K.NAIL
 10/3/88, IS
 SET P.K.NAIL
 10/31/89, IS
 FD P.K.NAIL
 12/2/04, SAH
 4/18/06, RGN
 6/24/11, MC
 SET MAG/WASHER
 REF4
 2/6/12, SAH
 FD MAG NAIL
 REF4
 6/22/22, TDN
 2/2/23, JMR
 FD SHANK
 3-29-24, JMR

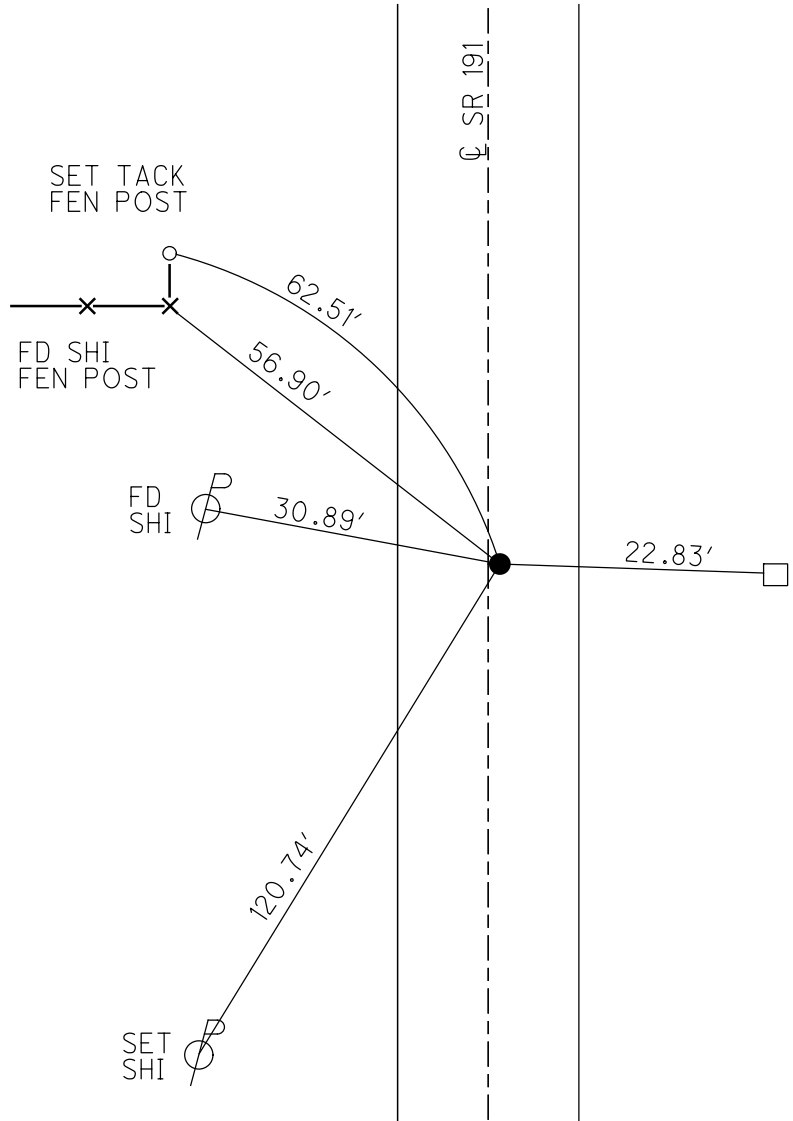
O.D.O.T. DISTRICT 2 SURVEY OFFICE (USE ONLY)

PERSONNEL _____ REFERENCE NO. 5 SHEET 9 OF 34
 NOTES RHOADES DATE 6/22/22 ROUTE SR 191
 H.C. NIESE WEATHER SUNNY COUNTY WILLIAMS
 R.C. WHITAKER TEMP. 83° TOWNSHIP SPRINGFIEND
 DWG BY RHOADES PID PAVETRAIN SECTION 16
 T 6 N R 4 E

TYPE MONUMENT MAG/WASHER
 ON SURFACE - ~~BELOW~~ ON _____
 OFFSET Q PAVEMENT 1.2' ~~LT~~ : RT
9.2' TO RT EDGE PAVEMENT
 STATION: 121+28



HORIZ.DATUM: NAD83 2011 GEOID: NAVD88 2018
 GRID: NORTHING: 664415.397 EASTING: 1444145.703



RECORD:
 FD R.R.SPIKE
 10/3/88, IS
 SET SM.R.R.SPIKE
 10/31/89, IS
 FD SM.R.R.SPIKE
 12/2/04, SAH
 4/18/06, RGN
 6/24/11, MC
 SET MAG/WASHER
 REF5
 2/3/12, SAH
 FD MAG/WASHER
 REF5
 6/22/22, TDN
 2/2/23, JMR

O.D.O.T. DISTRICT 2 SURVEY OFFICE (USE ONLY)

PERSONNEL

REFERENCE NO. 6

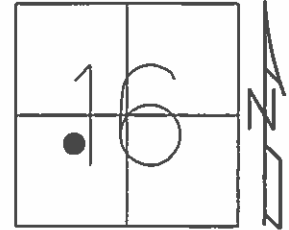
SHEET 10 OF 34

NOTES NUHFER
 H.C. MIKLOVIC
 R.C. HANKE

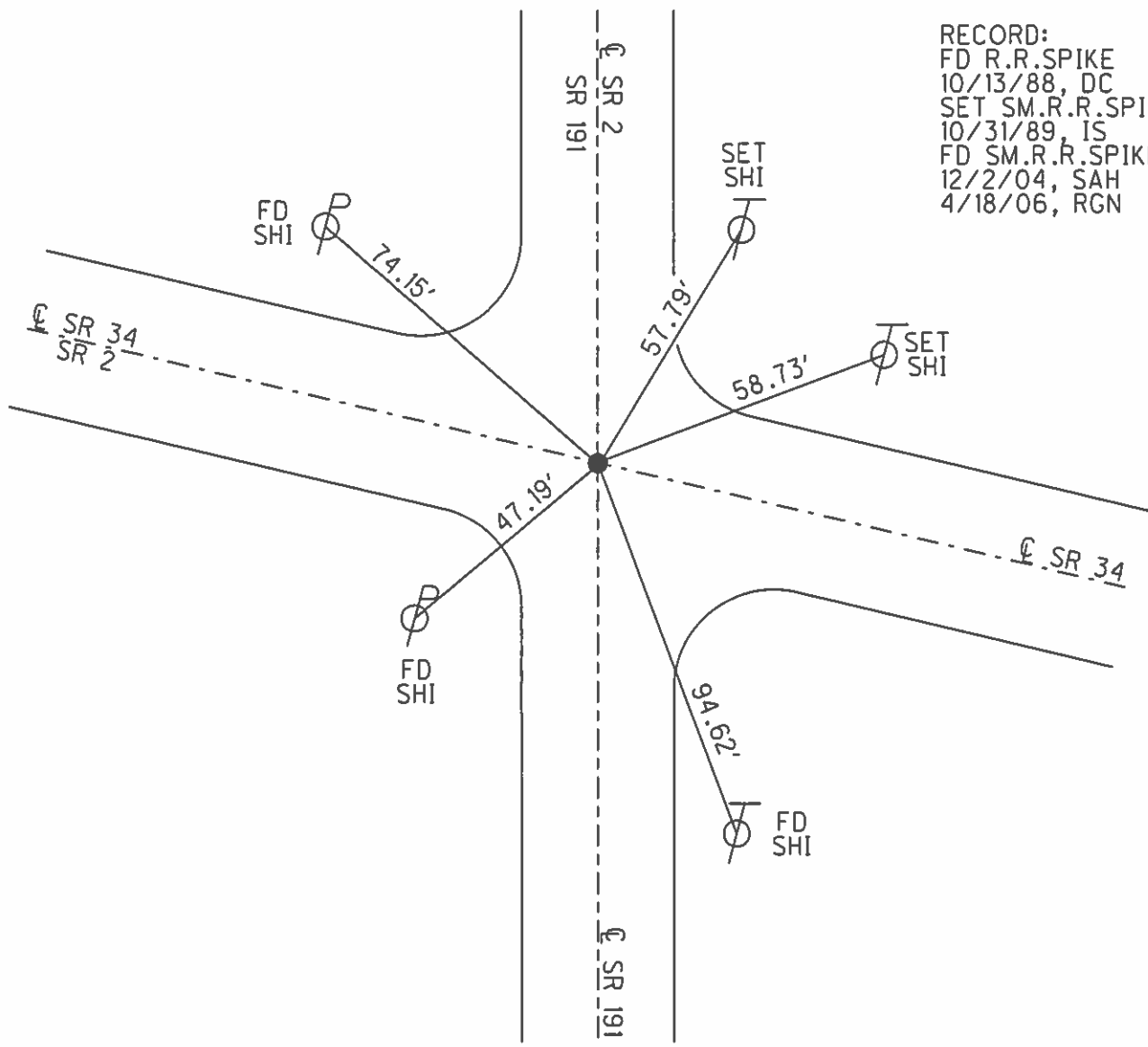
DATE 4/18/06
 WEATHER MILD
 TEMP. 59°

ROUTE SR 191
 COUNTY WILLIAMS
 TOWNSHIP SPRINGFIELD
 SECTION 16
T 6 N R 4 E

TYPE MONUMENT SM.R.R.SPIKE
 ON SURFACE - ~~BELOW~~ ON
 LEFT - ☉ PAV'T - RIGHT ON
 - TO - EDGE PAVEMENT
 S.L.M. 129+17
 GRID: NORTHING: - EASTING: -



RECORD:
 FD R.R.SPIKE
 10/13/88, DC
 SET SM.R.R.SPIKE
 10/31/89, IS
 FD SM.R.R.SPIKE
 12/2/04, SAH
 4/18/06, RGN



O.D.O.T. DISTRICT 2 SURVEY OFFICE (USE ONLY)

PERSONNEL

REFERENCE NO. 7

SHEET 11 OF 34

NOTES JAMES

DATE 3/20/19

ROUTE SR 191

H.C. O'DONNELL

WEATHER CLOUDY

COUNTY WILLIAMS

R.C. JAMES

TEMP. 36°

TOWNSHIP SPRINGFIELD

DWG BY NIESE PID 92373

SECTION 4

T 6 N R 4 E

TYPE MONUMENT MAG/WASHER

ON SURFACE - ~~BELOW~~ ON

OFFSET \odot PAVEMENT ON LT : RT

- TO - EDGE PAVEMENT

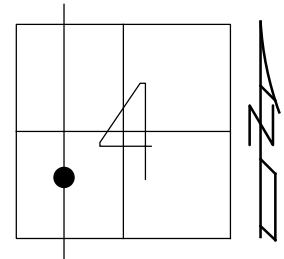
STATION: 228+10

HORZ.DATUM: NAD83(2011)

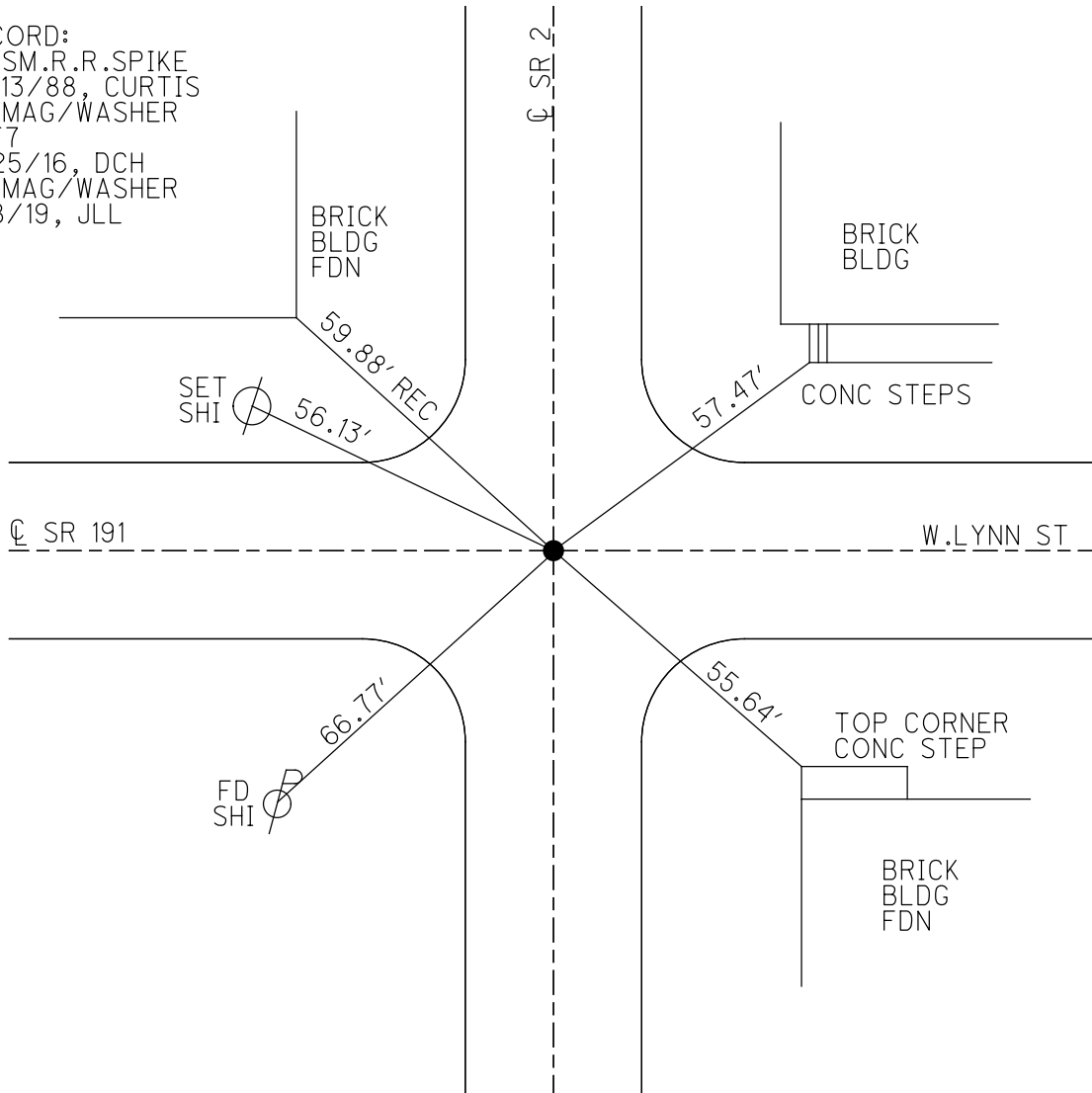
GEOID: 12A

GRID: NORTHING: 675142.513

EASTING: 1444180.183



RECORD:
FD SM.R.R.SPIKE
10/13/88, CURTIS
FD MAG/WASHER
REF 7
11/25/16, DCH
FD MAG/WASHER
8/8/19, JLL



O.D.O.T. DISTRICT 2 SURVEY OFFICE (USE ONLY)

PERSONNEL

REFERENCE NO. 8

SHEET 12 OF 34

NOTES JAMES

DATE 3/20/19

ROUTE SR 191

H.C. O'DONNELL

WEATHER CLOUDY

COUNTY WILLIAMS

R.C. JAMES

TEMP. 36°

TOWNSHIP SPRINGFIELD

SECTION 5

DWG BY NIESE PID 92373

T 6 N R 4 E

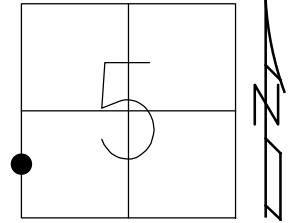
TYPE MONUMENT MAG/WASHER

ON SURFACE - ~~BELOW~~ ON

OFFSET \odot PAVEMENT 3.0' LT : ~~RT~~

- TO - EDGE PAVEMENT

STATION: 241+22.16



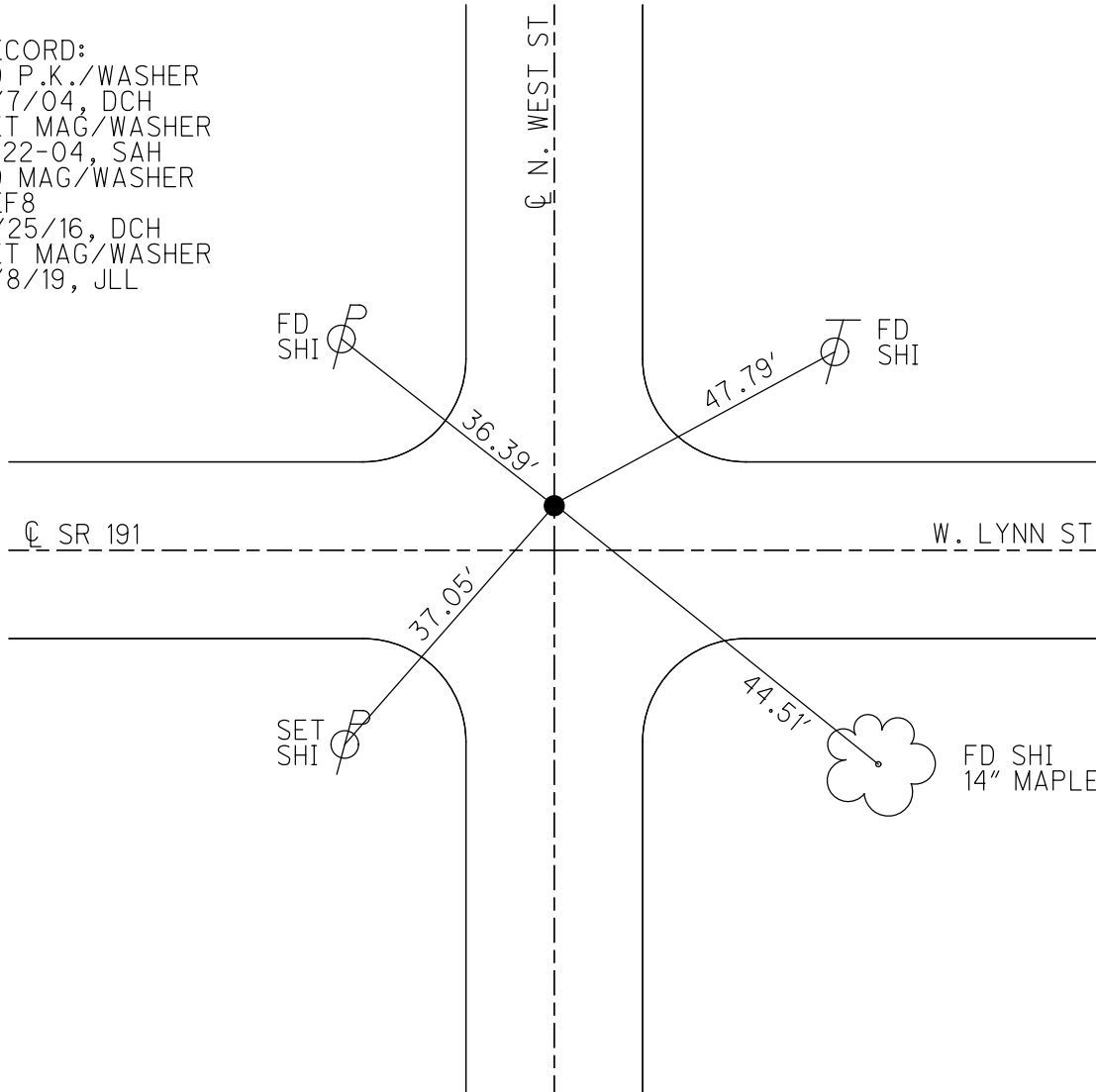
HORIZ.DATUM: NAD83(2011)

GEOID: 12A

GRID: NORTHING: 675162.851

EASTING: 1442868.258

RECORD:
 FD P.K./WASHER
 5/7/04, DCH
 SET MAG/WASHER
 7-22-04, SAH
 FD MAG/WASHER
 REF8
 11/25/16, DCH
 SET MAG/WASHER
 8/8/19, JLL



O.D.O.T. DISTRICT 2 SURVEY OFFICE (USE ONLY)

PERSONNEL

REFERENCE NO. 9

SHEET 13 OF 34

NOTES JAMES

DATE 3/20/19

ROUTE SR 191

H.C. O'DONNELL

WEATHER CLOUDY

COUNTY WILLIAMS

R.C. JAMES

TEMP. 36°

TOWNSHIP SPRINGFIELD

DWG BY NIESE PID 92373

SECTION 5

T 6 N R 4 E

TYPE MONUMENT MAG SHANK

ON SURFACE - ~~BELOW~~ ON

OFFSET 1.3' LT : ~~RT~~

11.1' TO LT EDGE PAVEMENT

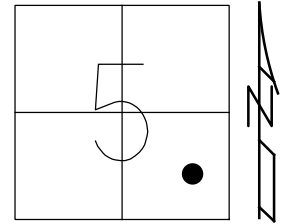
STATION: 251+65.65

HORZ.DATUM: NAD83(2011)

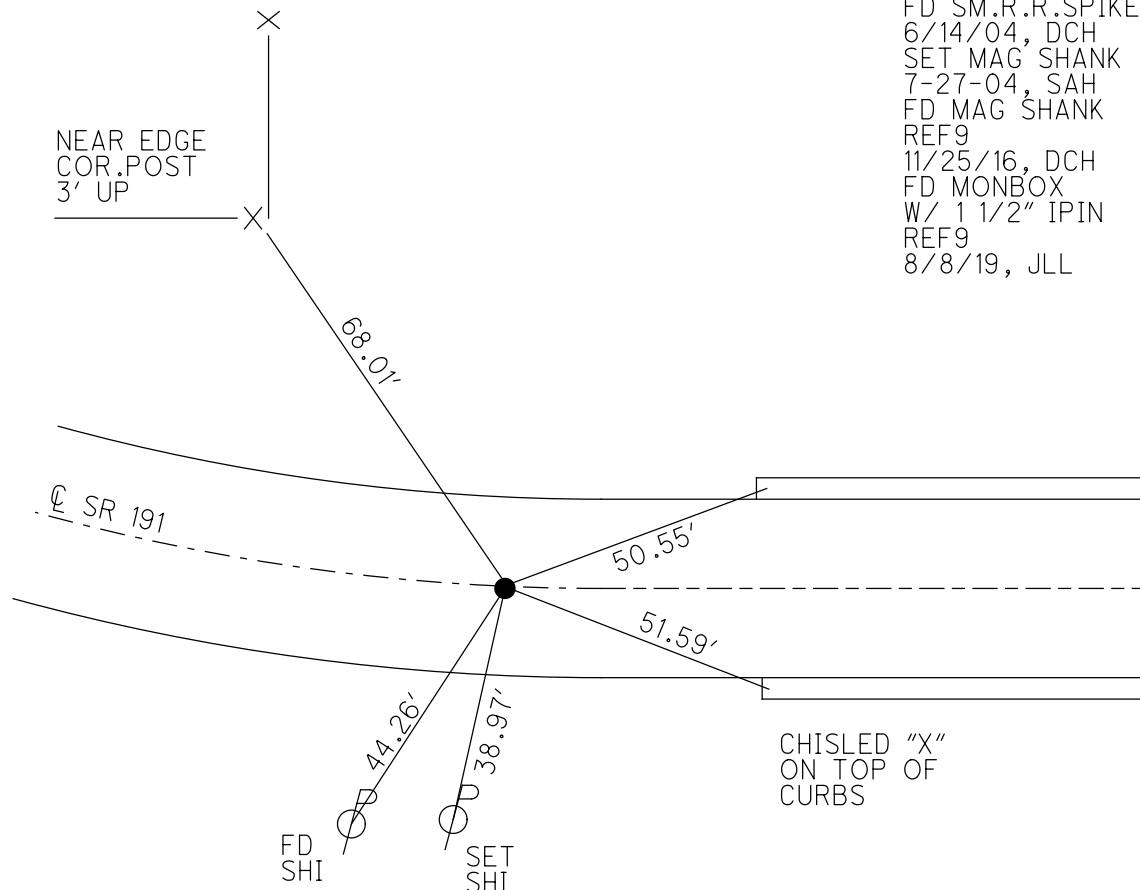
GEOID: 12A

GRID: NORTHING: 675192.528

EASTING: 1441824.873



RECORD: T.S.
 STA 251+66
 MONBOX COVERED
 IN CONST.
 SET SMALL R.R.SPIKE
 9-9-87
 FD SM.R.R.SPIKE
 6/14/04, DCH
 SET MAG SHANK
 7-27-04, SAH
 FD MAG SHANK
 REF9
 11/25/16, DCH
 FD MONBOX
 W/ 1 1/2" IPIN
 REF9
 8/8/19, JLL



O.D.O.T. DISTRICT 2 SURVEY OFFICE (USE ONLY)

PERSONNEL

REFERENCE NO. 10

SHEET 14 OF 34

NOTES JAMES

DATE 3/20/19

ROUTE SR 191

H.C. O'DONNELL

WEATHER CLOUDY

COUNTY WILLIAMS

R.C. JAMES

TEMP. 36°

TOWNSHIP SPRINGFIELD

DWG BY NIESE PID 92373

SECTION 5

T 6 N R 4 E

TYPE MONUMENT MAG SHANK

ON SURFACE - ~~BELOW~~ ON

OFFSET \odot PAVEMENT 0.3' LT : ~~RT~~

9.9' TO LT EDGE PAVEMENT

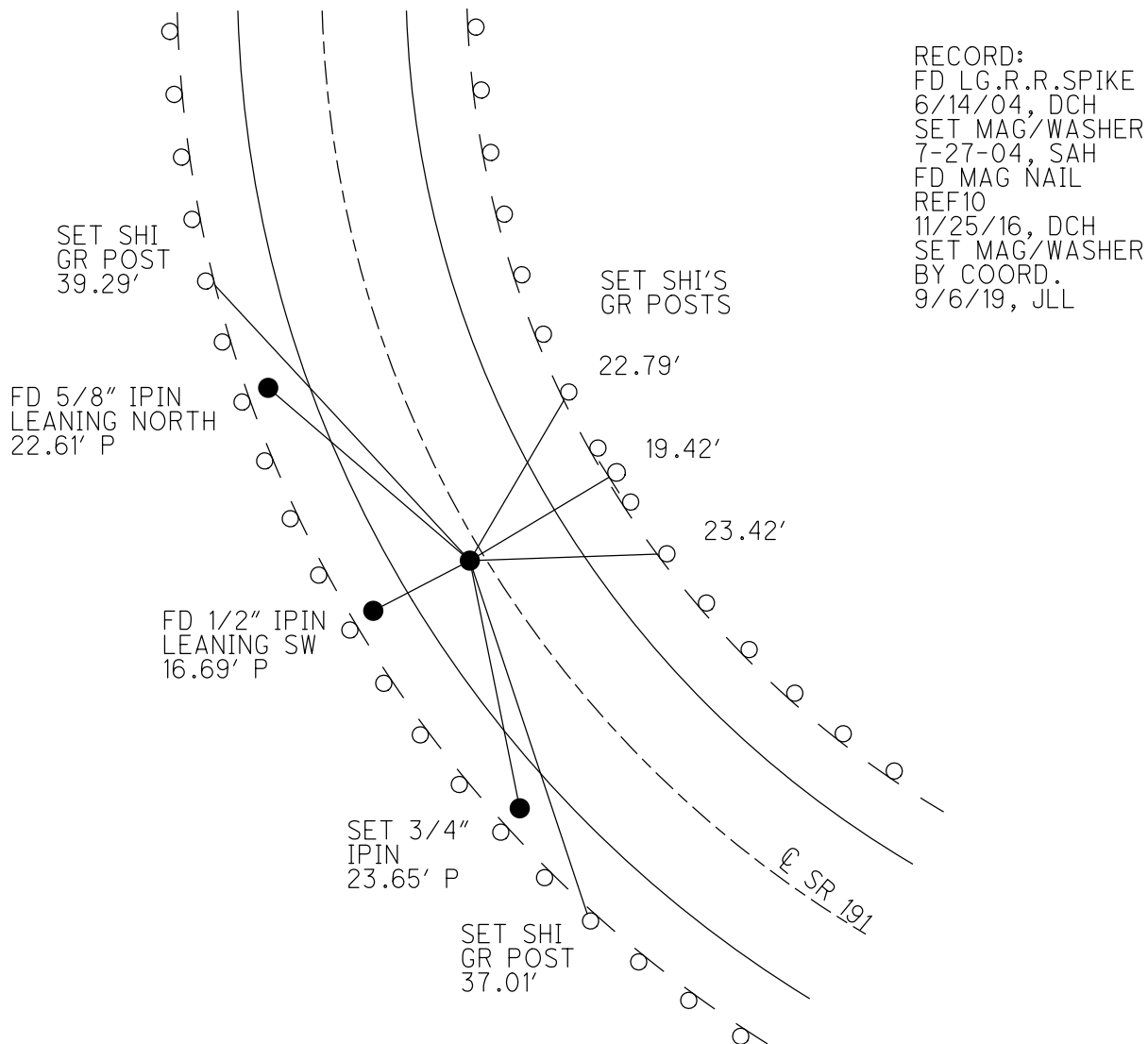
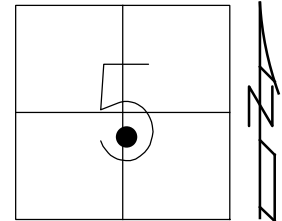
STATION: 273+80.82

HORZ.DATUM: NAD83(2011)

GEOID: 12A

GRID: NORTHING: 676486.932

EASTING: 1440291.092



RECORD:
 FD LG.R.R.SPIKE
 6/14/04, DCH
 SET MAG/WASHER
 7-27-04, SAH
 FD MAG NAIL
 REF10
 11/25/16, DCH
 SET MAG/WASHER
 BY COORD.
 9/6/19, JLL

O.D.O.T. DISTRICT 2 SURVEY OFFICE (USE ONLY)

PERSONNEL

REFERENCE NO. 11

SHEET 15 OF 34

NOTES AUBLE

DATE 9/6/19

ROUTE SR 191

H.C. LEU

WEATHER CLOUDY

COUNTY WILLIAMS

R.C. NASON

TEMP. 67°

TOWNSHIP SPRINGFIELD

NIESE

SECTION 5

DWG BY NIESE PID 92373

T 6 N R 4 E

TYPE MONUMENT MAG/WASHER

ON SURFACE - ~~BELOW~~ ON

OFFSET 1.0' ~~LT~~ : RT

11.5' TO LT EDGE PAVEMENT

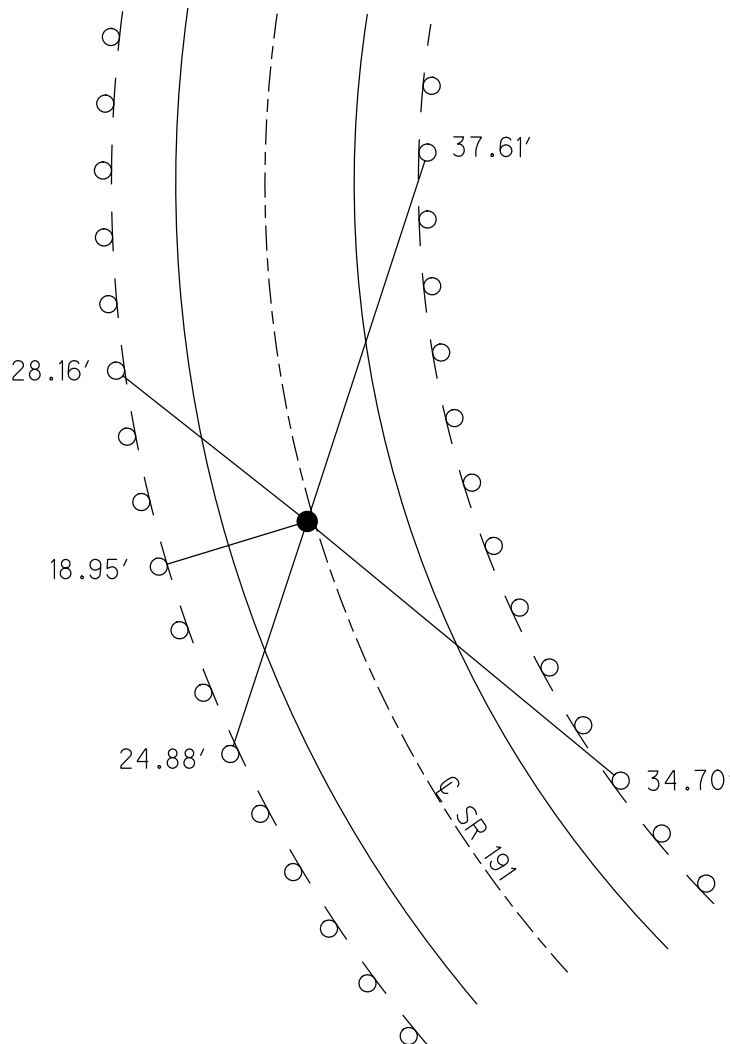
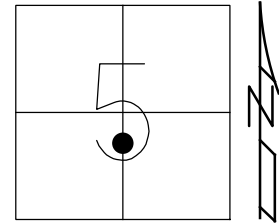
STATION: 276+80.82

HORZ. DATUM: NAD83(2011)

GEOID: 12A

GRID: NORTHING: 676786.575

EASTING: 1440281.761



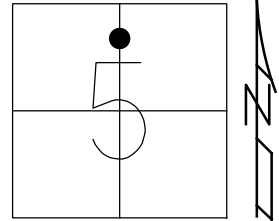
SET SHI'S
GR POSTS

RECORD: S.T.
STA 276+80.79
FD SM.R.R.SPIKE
6/14/04, DCH
SET MAG/WASHER
7/27/04, SAH
FD MAG/WASHER
REF11
11/25/16, DCH
SET MAG/WASHER
BY COORD.
9/6/19, JLL

O.D.O.T. DISTRICT 2 SURVEY OFFICE (USE ONLY)

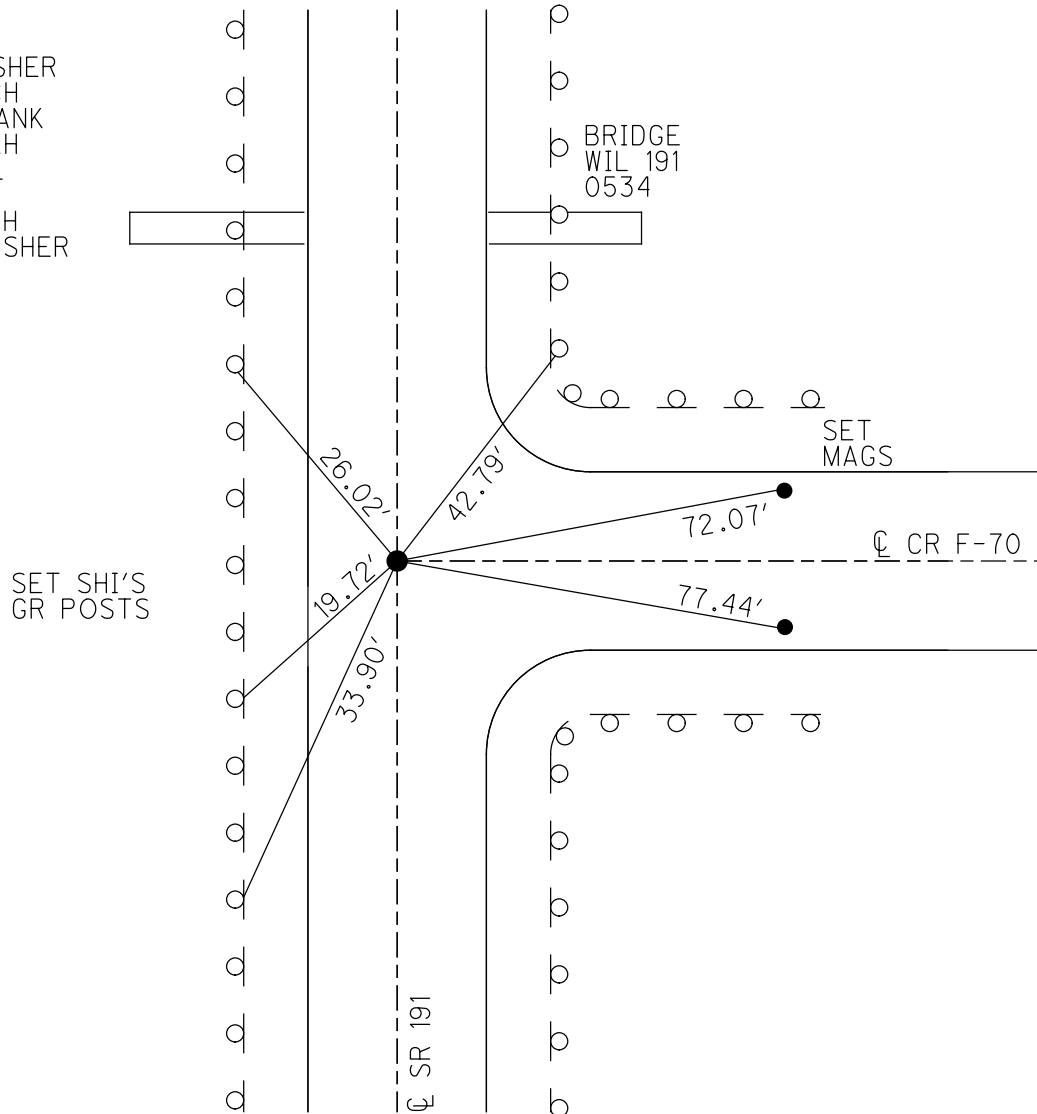
PERSONNEL _____ REFERENCE NO. 12 SHEET 16 OF 34
 NOTES AUBLE DATE 9/6/19 ROUTE SR 191
 H.C. LEU WEATHER CLOUDY COUNTY WILLIAMS
 R.C. NASON TEMP. 62° TOWNSHIP SPRINGFIELD
 _____ NIESE SECTION 5
 DWG BY NIESE PID 92373 T 6 N R 4 E

TYPE MONUMENT MAG NAIL
 ON SURFACE - ~~BELOW~~ ON _____
 OFFSET 0.6' LT : ~~RT~~
10.2' TO LT EDGE PAVEMENT
 STATION: 280+99.3



HORIZ.DATUM: NAD83(2011) GEOID: 12A
 GRID: NORTHING: 677205.231 EASTING: 1440283.423

RECORD:
 FD P.K./WASHER
 6/14/04, DCH
 SET MAG SHANK
 7-27-04, SAH
 FD MAG NAIL
 REF12
 11/25/16, DCH
 SET MAG/WASHER
 9/6/19, JLL



O.D.O.T. DISTRICT 2 SURVEY OFFICE (USE ONLY)

PERSONNEL

REFERENCE NO. 13

SHEET 17 OF 34

NOTES JAMES
 H.C. O'DONNELL
 R.C. JAMES

DATE 3/20/19
 WEATHER CLOUDY
 TEMP. 36°

ROUTE SR 191
 COUNTY WILLIAMS
 TOWNSHIP SPRINGFIELD
 SECTION 5
 T 6 N R 4 E

DWG BY NIESE PID 92373

TYPE MONUMENT MONBOX W/ DRILLH

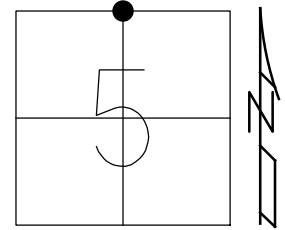
ON SURFACE - ~~BELOW~~ ON

OFFSET 1.5' LT : ~~RT~~
12.4' TO RT EDGE PAVEMENT

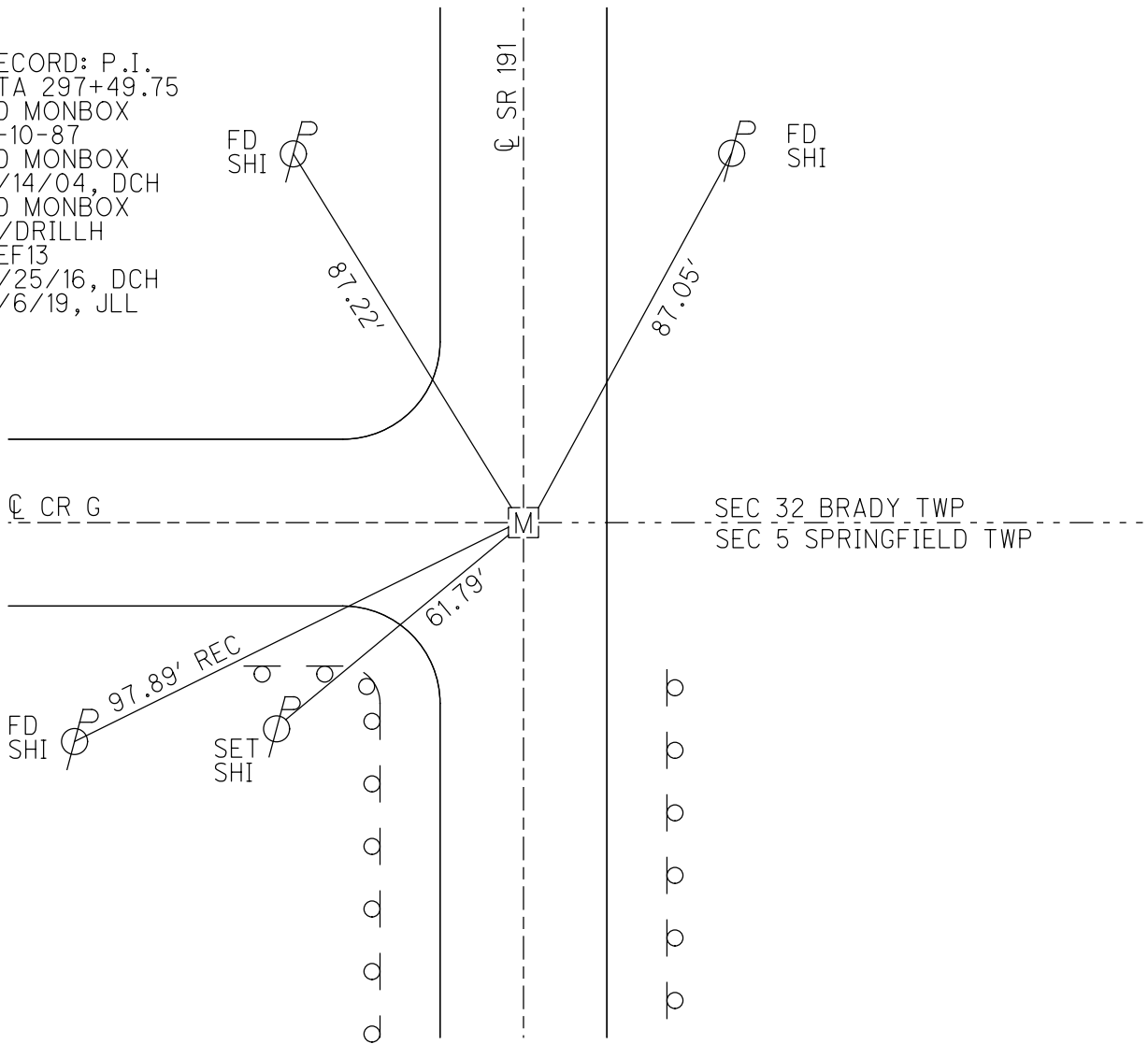
STATION: 297+49.41

HORZ. DATUM: NAD83(2011) GEOID: 12A

GRID: NORTHING: 678855.235 EASTING: 1440290.141



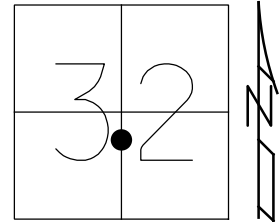
RECORD: P.I.
 STA 297+49.75
 FD MONBOX
 9-10-87
 FD MONBOX
 6/14/04, DCH
 FD MONBOX
 W/DRILLH
 REF13
 11/25/16, DCH
 9/6/19, JLL



O.D.O.T. DISTRICT 2 SURVEY OFFICE (USE ONLY)

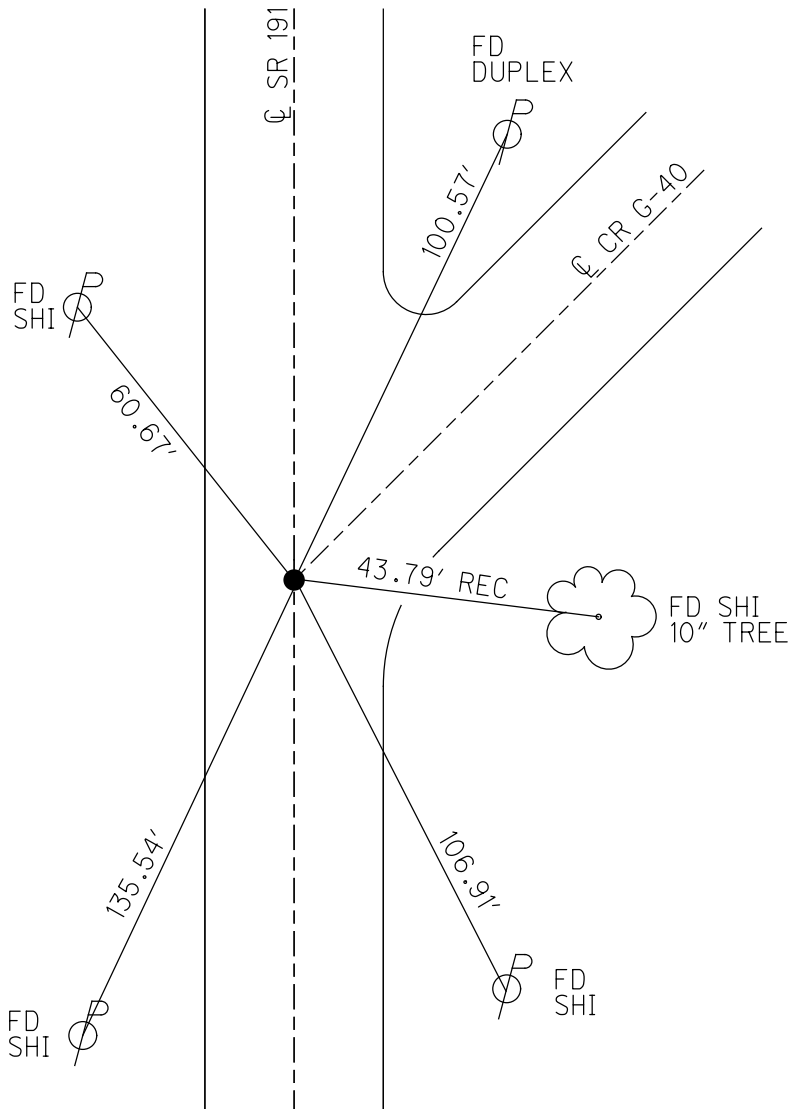
PERSONNEL _____ REFERENCE NO. 14 SHEET 18 OF 34
 NOTES JAMES DATE 3/20/19 ROUTE SR 191
 H.C. O'DONNELL WEATHER CLOUDY COUNTY WILLIAMS
 R.C. JAMES TEMP. 36° TOWNSHIP BRADY
 SECTION 32
 DWG BY NIESE PID 92373 T 7 N R 4 E

TYPE MONUMENT MAG SHANK
 ON SURFACE - ~~BELOW~~ ON
 OFFSET Q PAVEMENT 0.4' LT : ~~RT~~
10.8' TO LT EDGE PAVEMENT
 STATION: 307+33.8



HORZ.DATUM: NAD83(2011) GEOID: 12A
 GRID: NORTHING: 679839.363 EASTING: 1440308.554

RECORD: P.O.T.
 STA 307+34.39
 FD LG.R.R.SPIKE
 6/14/04, DCH
 SET MAG SHANK
 7-27-04, SAH
 FD MAG SHANK
 REF14
 11/25/16, DCH
 SET MAG/WASHER
 9/6/19, JLL



O.D.O.T. DISTRICT 2 SURVEY OFFICE (USE ONLY)

PERSONNEL

REFERENCE NO. 15

SHEET 19 OF 34

NOTES JAMES

DATE 3/20/19

ROUTE SR 191

H.C. O'DONNELL

WEATHER CLOUDY

COUNTY WILLIAMS

R.C. JAMES

TEMP. 36°

TOWNSHIP BRADY

DWG BY NIESE

PID 92373

SECTION 32

T 7 N R 4 E

TYPE MONUMENT LG.R.R.SPIKE

~~ON SURFACE~~ - BELOW 3"

OFFSET 1.5' \pm : RT

9.0' TO RT EDGE PAVEMENT

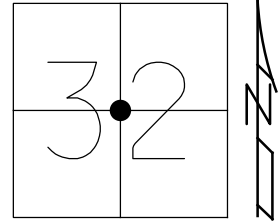
STATION: 323+90.82

HORZ.DATUM: NAD83(2011)

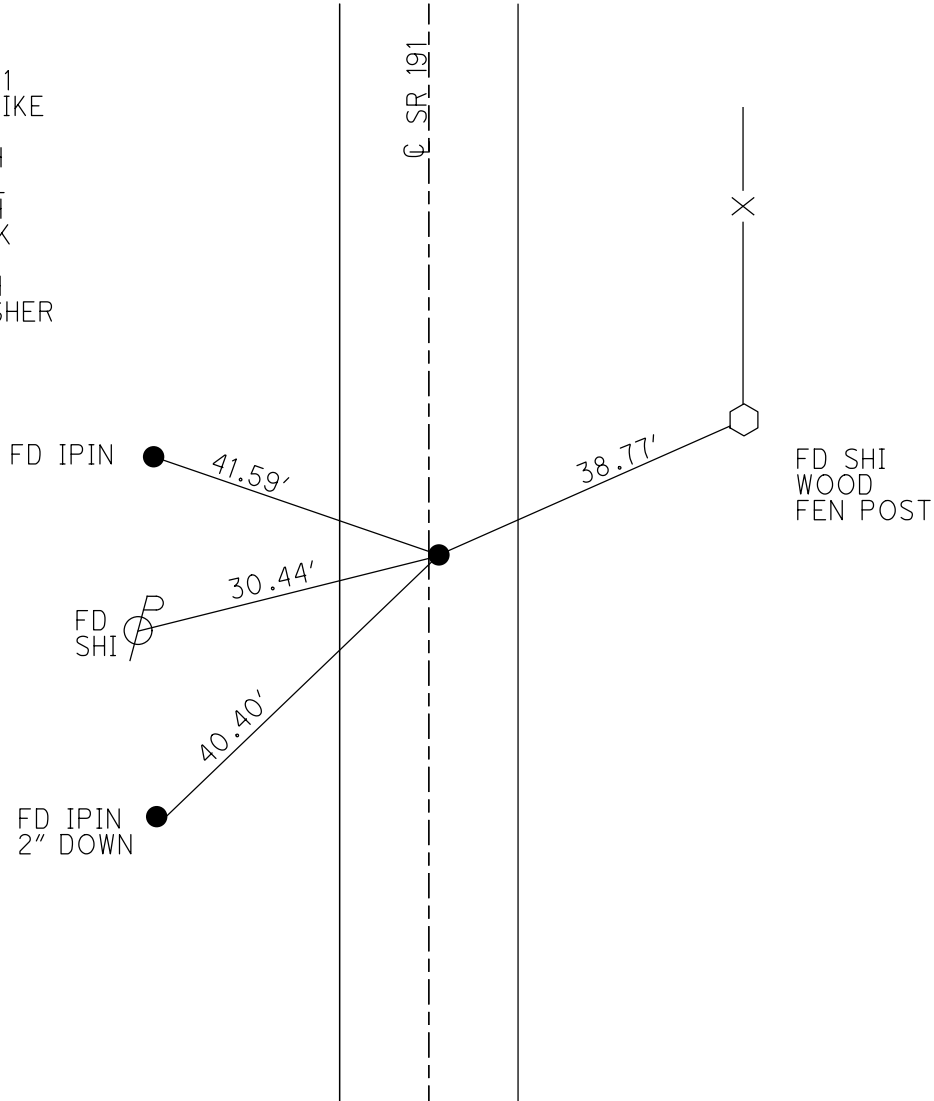
GEOID: 12A

GRID: NORTHING: 681496.023

EASTING: 1440339.764



RECORD: P.I.
 STA 323+91.91
 FD LG.R.R.SPIKE
 3" DOWN
 6/14/04, DCH
 SET MAG NAIL
 7-27-04, SAH
 FD MAG SHANK
 REF15
 11/25/16, DCH
 SET MAG/WASHER
 9/6/19, JLL



O.D.O.T. DISTRICT 2 SURVEY OFFICE (USE ONLY)

PERSONNEL

REFERENCE NO. 16

SHEET 20 OF 34

NOTES RHOADES

DATE 3/21/19

ROUTE SR 191

H.C. O'DONNELL

WEATHER HAZE

COUNTY WILLIAMS

R.C. JAMES

TEMP. 42°

TOWNSHIP BRADY

SECTION 32

DWG BY NIESE

PID 92373

T 7 N R 4 E

TYPE MONUMENT SM.R.R.SPIKE

~~ON SURFACE~~ - BELOW 2"

OFFSET 0.5' ~~LT~~ : RT

- TO - EDGE PAVEMENT

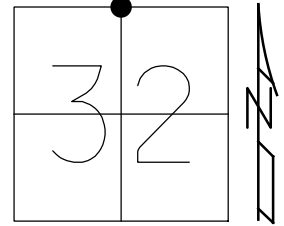
STATION: 350+31.29

HORZ.DATUM: NAD83(2011)

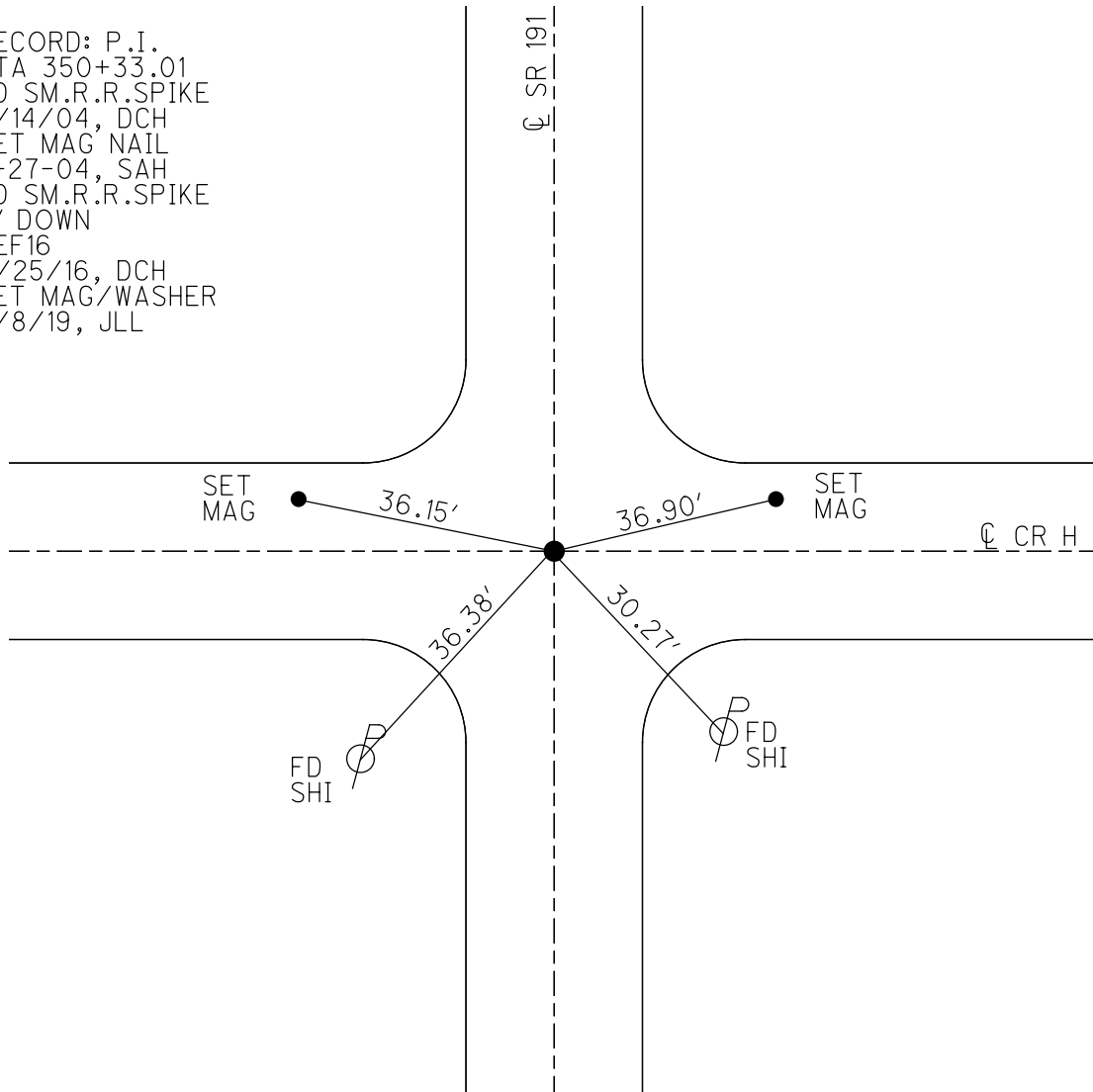
GEOID: 12A

GRID: NORTHING: 684135.899

EASTING: 1440387.746



RECORD: P.I.
 STA 350+33.01
 FD SM.R.R.SPIKE
 6/14/04, DCH
 SET MAG NAIL
 7-27-04, SAH
 FD SM.R.R.SPIKE
 2" DOWN
 REF16
 11/25/16, DCH
 SET MAG/WASHER
 8/8/19, JLL



O.D.O.T. DISTRICT 2 SURVEY OFFICE (USE ONLY)

PERSONNEL

REFERENCE NO. 16 A

SHEET 21 OF 34

NOTES RHOADES

DATE 3/21/19

ROUTE SR 191

H.C. O'DONNELL

WEATHER HAZE

COUNTY WILLIAMS

R.C. JAMES

TEMP. 42°

TOWNSHIP BRADY

DWG BY NIESE PID 92373

SECTION 29

T 7 N R 4 E

TYPE MONUMENT MONBOX W/ DRILLH

ON SURFACE - ~~BELOW~~ ON

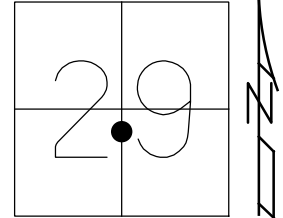
OFFSET \odot PAVEMENT 6.5' ~~LT~~ : RT

- TO - EDGE PAVEMENT

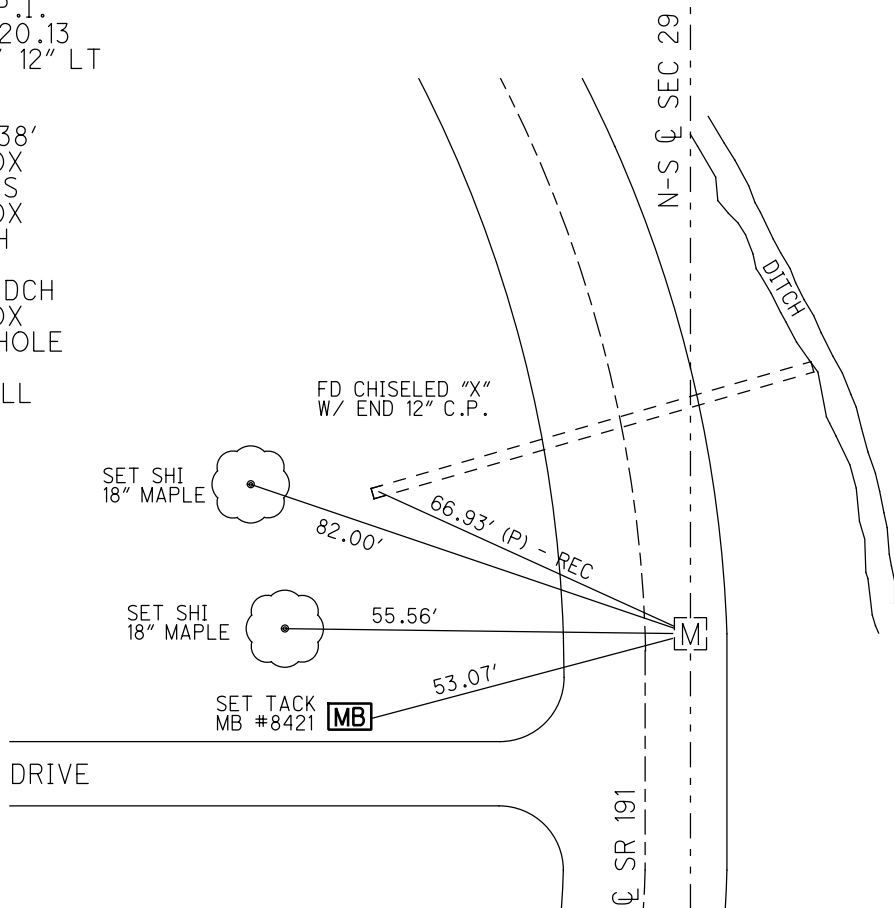
STATION: 372+23.28

HORIZ.DATUM: NAD83(2011) GEOID: 12A

GRID: NORTHING: 686322.350 EASTING: 1440428.098



RECORD: P.I.
 STA 372+20.13
 $\Delta = 09^{\circ}48'12''$ LT
 D = 05°
 LS = 150'
 TS = 173.38'
 FD MONBOX
 1/8/87, CS
 FD MONBOX
 W/ DRILLH
 REFA16
 11/25/16, DCH
 FD MONBOX
 W/DRILL HOLE
 REFA16
 8/8/19, JLL



O.D.O.T. DISTRICT 2 SURVEY OFFICE (USE ONLY)

PERSONNEL

REFERENCE NO. 17

SHEET 22 OF 34

NOTES RHOADES

DATE 3/21/19

ROUTE SR 191

H.C. O'DONNELL

WEATHER HAZE

COUNTY WILLIAMS

R.C. JAMES

TEMP. 42°

TOWNSHIP BRADY

DWG BY NIESE PID 92373

SECTION 29

T 7 N R 4 E

TYPE MONUMENT MONBOX

ON SURFACE - ~~BELOW~~ ON

OFFSET \bar{C} PAVEMENT 0.5' LT : ~~RT~~

9.4' TO RT EDGE PAVEMENT

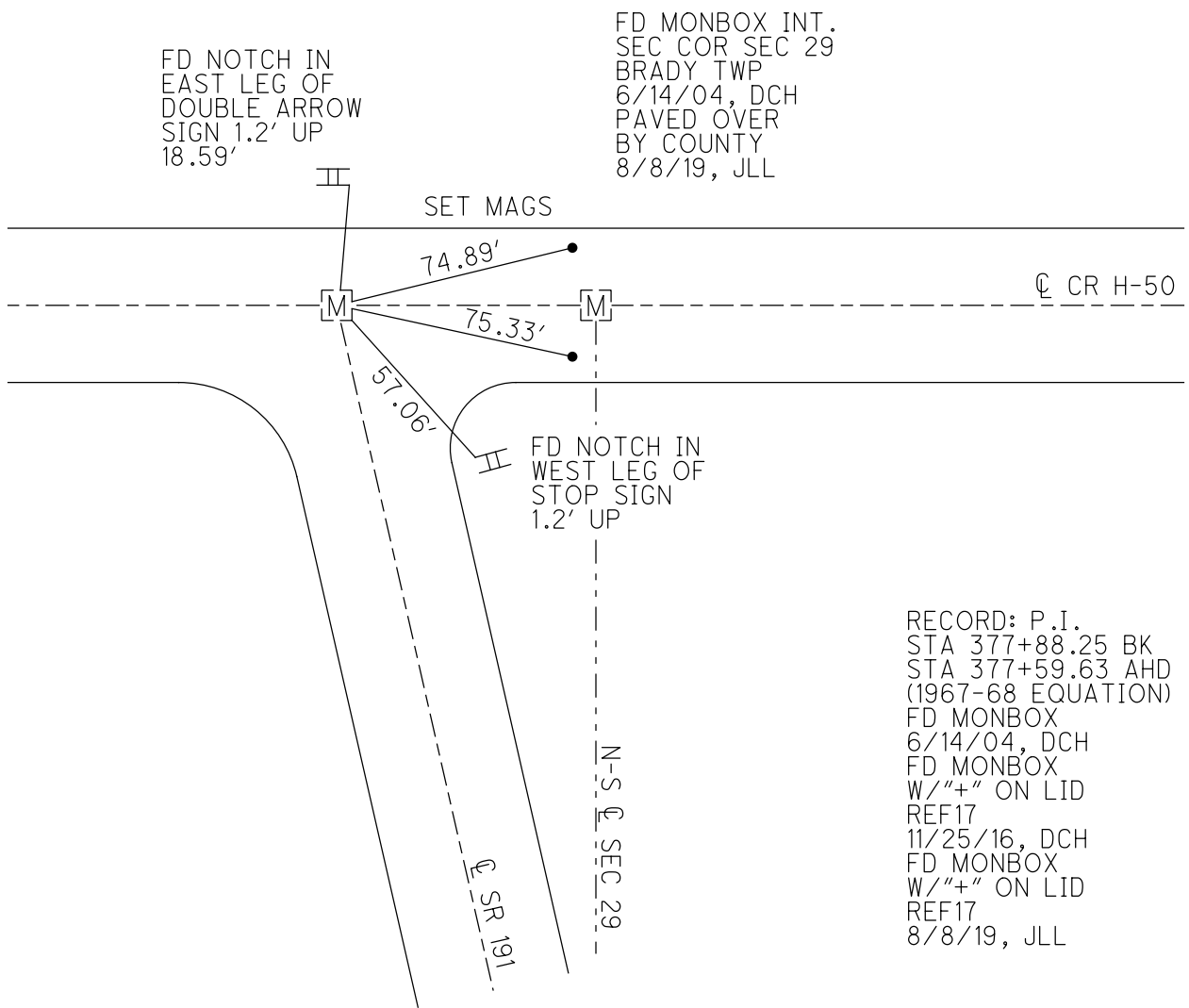
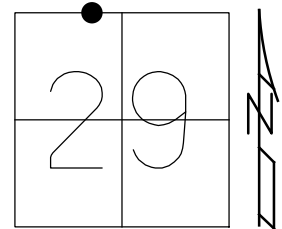
STATION: 376+84.5

HORZ.DATUM: NAD83(2011)

GEOID: 12A

GRID: NORTHING: 686783.742

EASTING: 1440357.093



O.D.O.T. DISTRICT 2 SURVEY OFFICE (USE ONLY)

PERSONNEL

REFERENCE NO. 18

SHEET 23 OF 34

NOTES RHOADES

DATE 3/21/19

ROUTE SR 191

H.C. O'DONNELL

WEATHER HAZE

COUNTY WILLIAMS

R.C. JAMES

TEMP. 42°

TOWNSHIP BRADY

SECTION 29

DWG BY NIESE PID 92373

T 7 N R 4 E

TYPE MONUMENT MONBOX

ON SURFACE - ~~BELOW~~ ON

OFFSET \perp PAVEMENT ON LT : RT

10.4' TO LT EDGE PAVEMENT

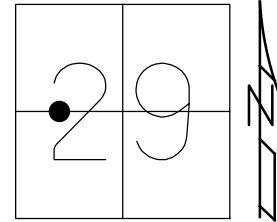
STATION: 389+20.19

HORZ. DATUM: NAD83(2011)

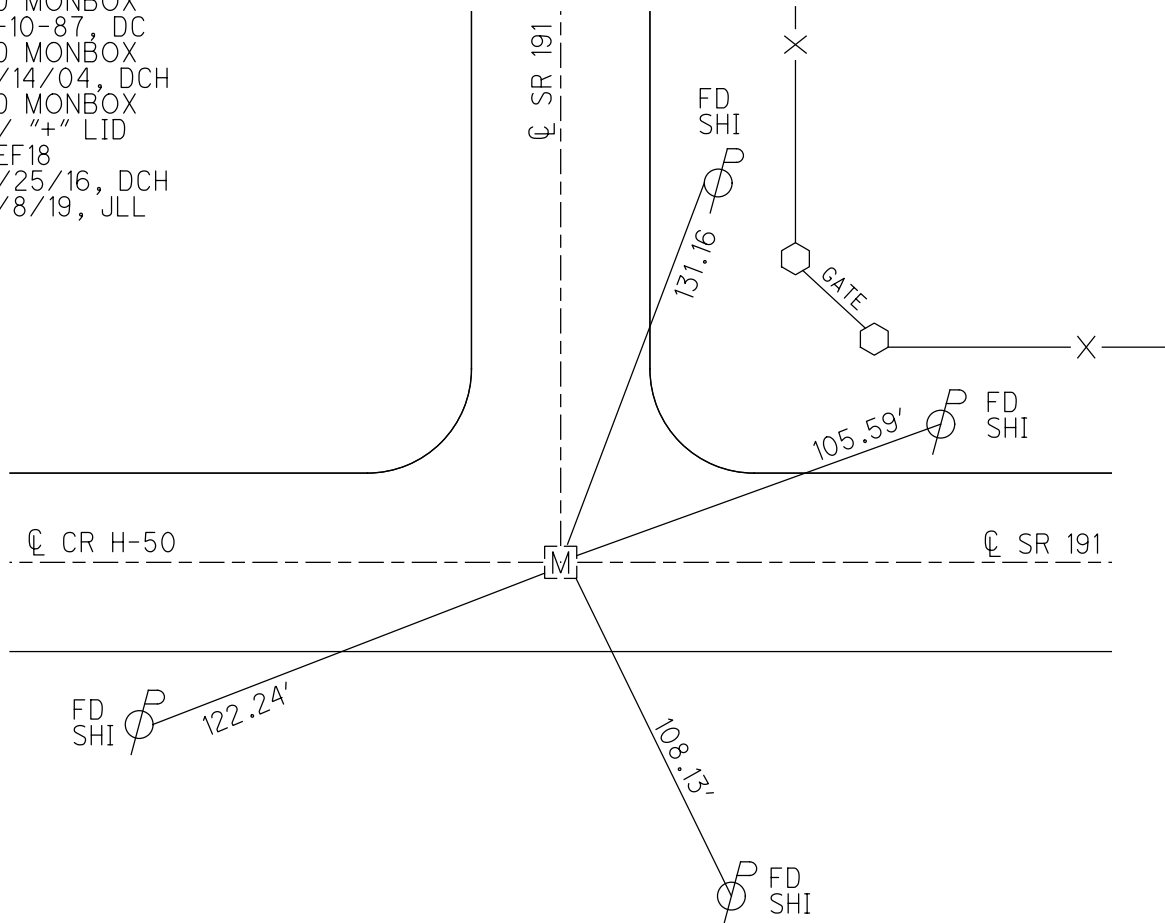
GEOID: 12A

GRID: NORTHING: 686810.671

EASTING: 1439121.768



RECORD: P.I.
 STA 389+22.32
 FD MONBOX
 9-10-87, DC
 FD MONBOX
 6/14/04, DCH
 FD MONBOX
 W/ "+" LID
 REF18
 11/25/16, DCH
 8/8/19, JLL



O.D.O.T. DISTRICT 2 SURVEY OFFICE (USE ONLY)

PERSONNEL

REFERENCE NO. 19

SHEET 24 OF 34

NOTES RHOADES
 H.C. O'DONNELL
 R.C. JAMES

DATE 3/21/19
 WEATHER CLOUDY
 TEMP. 44°

ROUTE SR 191
 COUNTY WILLIAMS
 TOWNSHIP BRADY
 SECTION 20

DWG BY NIESE PID 92373

T 7 N R 4 E

TYPE MONUMENT MAG NAIL

ON SURFACE - ~~BELOW~~ ON

OFFSET \odot PAVEMENT 0.6' LT : ~~RT~~
9.3' TO LT EDGE PAVEMENT

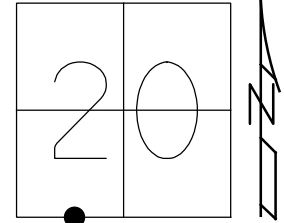
STATION: 415+61.17

HORZ.DATUM: NAD83(2011)

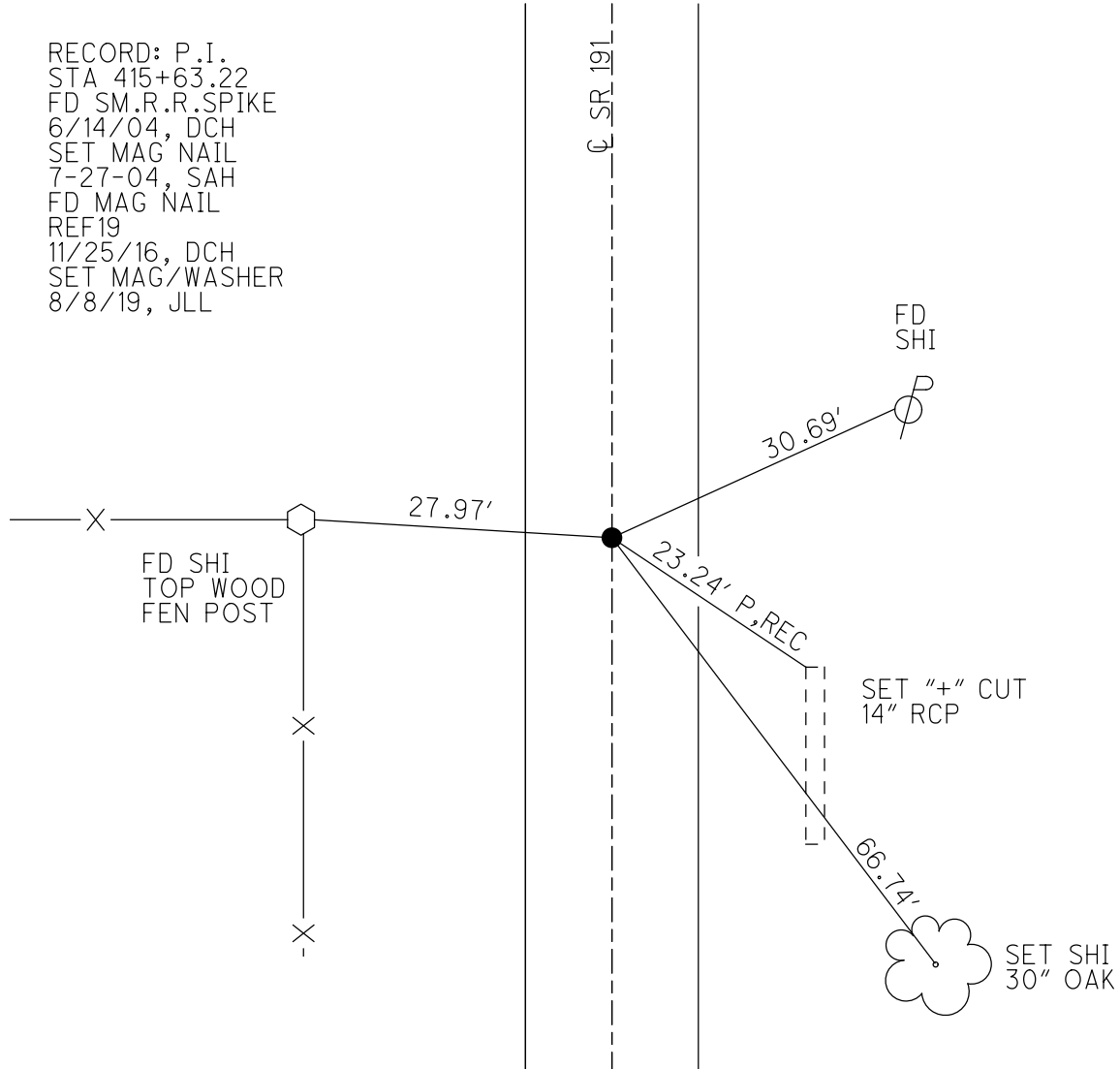
GEOID: 12A

GRID: NORTHING: 689451.004

EASTING: 1439172.700



RECORD: P.I.
 STA 415+63.22
 FD SM.R.R.SPIKE
 6/14/04, DCH
 SET MAG NAIL
 7-27-04, SAH
 FD MAG NAIL
 REF19
 11/25/16, DCH
 SET MAG/WASHER
 8/8/19, JLL



O.D.O.T. DISTRICT 2 SURVEY OFFICE (USE ONLY)

PERSONNEL

REFERENCE NO. 20

SHEET 25 OF 34

NOTES RHOADES
 H.C. O'DONNELL
 R.C. JAMES

DATE 3/21/19
 WEATHER CLOUDY
 TEMP. 44°

ROUTE SR 191
 COUNTY WILLIAMS
 TOWNSHIP BRADY
 SECTION 20
 T 7 N R 4 E

DWG BY NIESE PID 92373

TYPE MONUMENT MAG NAIL

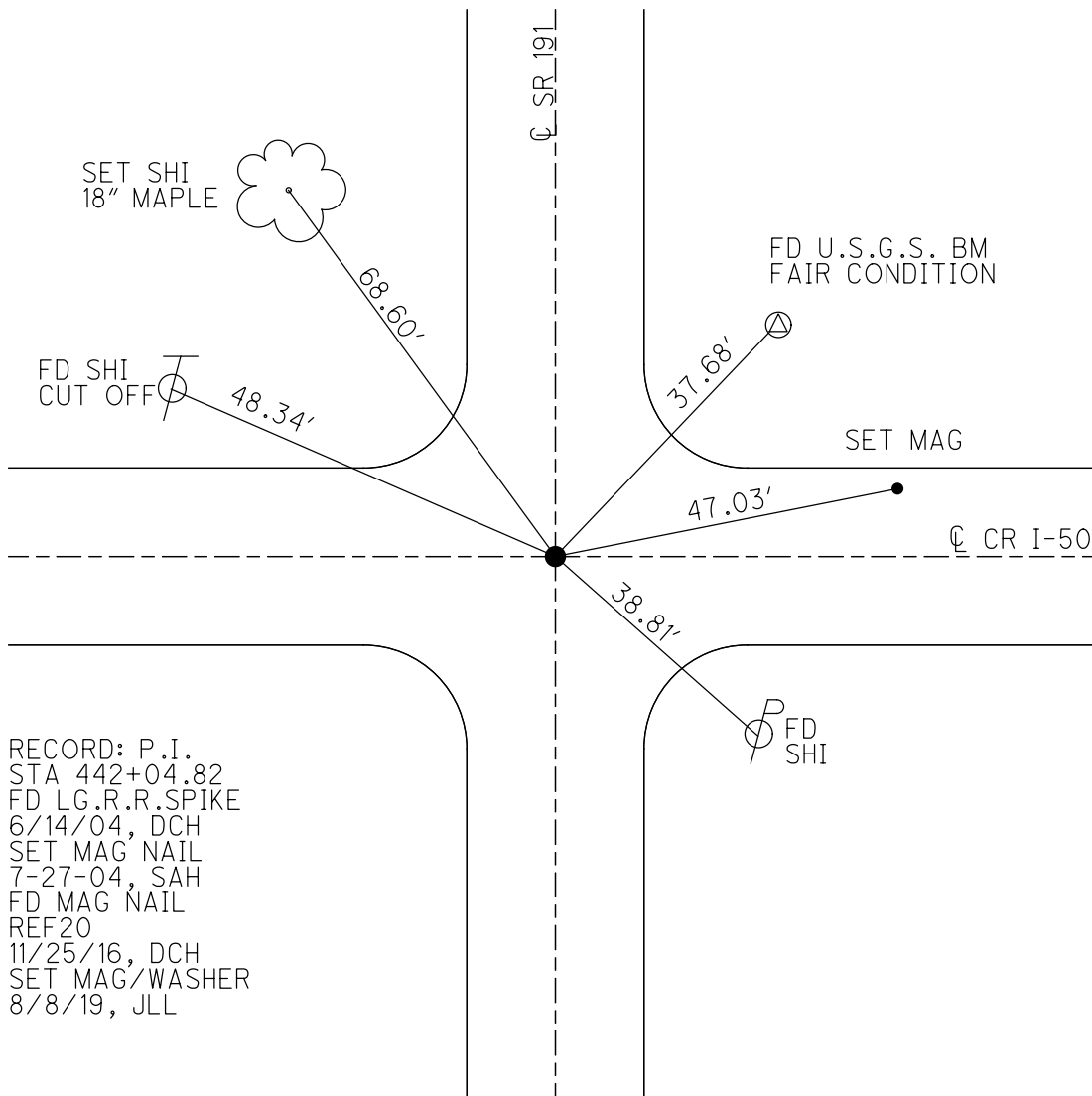
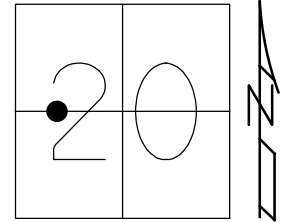
ON SURFACE - ~~BELOW~~ ON

OFFSET C PAVEMENT ON LT : RT
- TO - EDGE PAVEMENT

STATION: 442+02.53

HORZ. DATUM: NAD83(2011) GEOID: 12A

GRID: NORTHING: 692091.556 EASTING: 1439231.243



RECORD: P.I.
 STA 442+04.82
 FD LG.R.R.SPIKE
 6/14/04, DCH
 SET MAG NAIL
 7-27-04, SAH
 FD MAG NAIL
 REF20
 11/25/16, DCH
 SET MAG/WASHER
 8/8/19, JLL

O.D.O.T. DISTRICT 2 SURVEY OFFICE (USE ONLY)

PERSONNEL

REFERENCE NO. 23

SHEET 26 OF 34

NOTES RHOADES

DATE 3/21/19

ROUTE SR 191

H.C. O'DONNELL

WEATHER CLOUDY

COUNTY WILLIAMS

R.C. JAMES

TEMP. 44°

TOWNSHIP BRADY

SECTION 17

DWG BY NIESE PID 92373

T 7 N R 4 E

TYPE MONUMENT MAG NAIL

ON SURFACE - ~~BELOW~~ ON

OFFSET 0.4' ± : RT

- TO - EDGE PAVEMENT

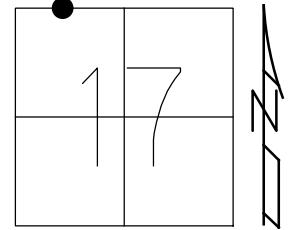
STATION: 521+29.94

HORIZ.DATUM: NAD83(2011)

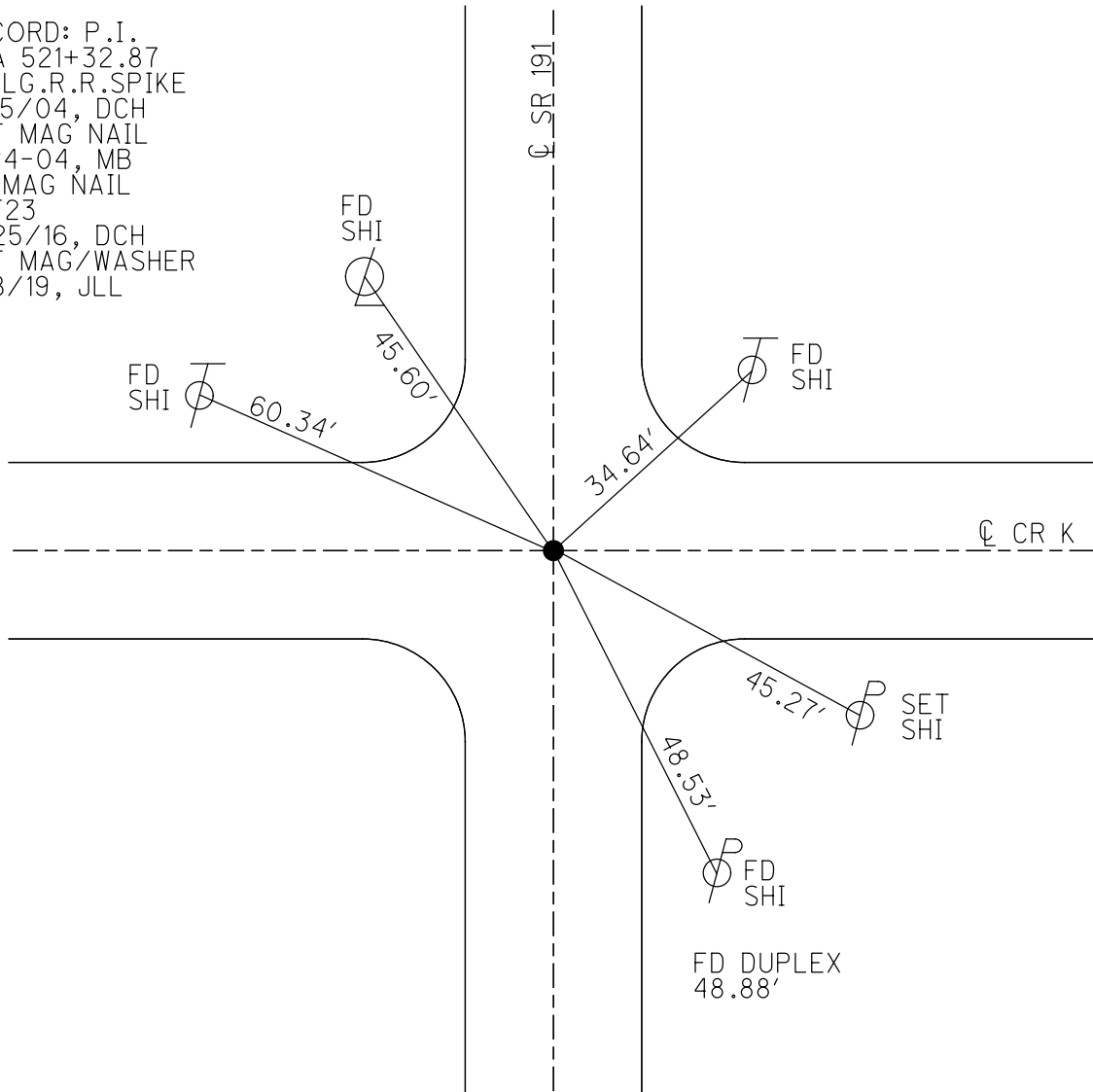
GEOID: 2012A

GRID: NORTHING: 700017.286

EASTING: 1439369.412



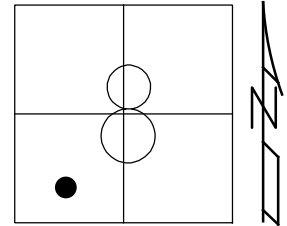
RECORD: P.I.
 STA 521+32.87
 FD LG.R.R.SPIKE
 6/15/04, DCH
 SET MAG NAIL
 8-24-04, MB
 FD MAG NAIL
 REF23
 11/25/16, DCH
 SET MAG/WASHER
 8/8/19, JLL



O.D.O.T. DISTRICT 2 SURVEY OFFICE (USE ONLY)

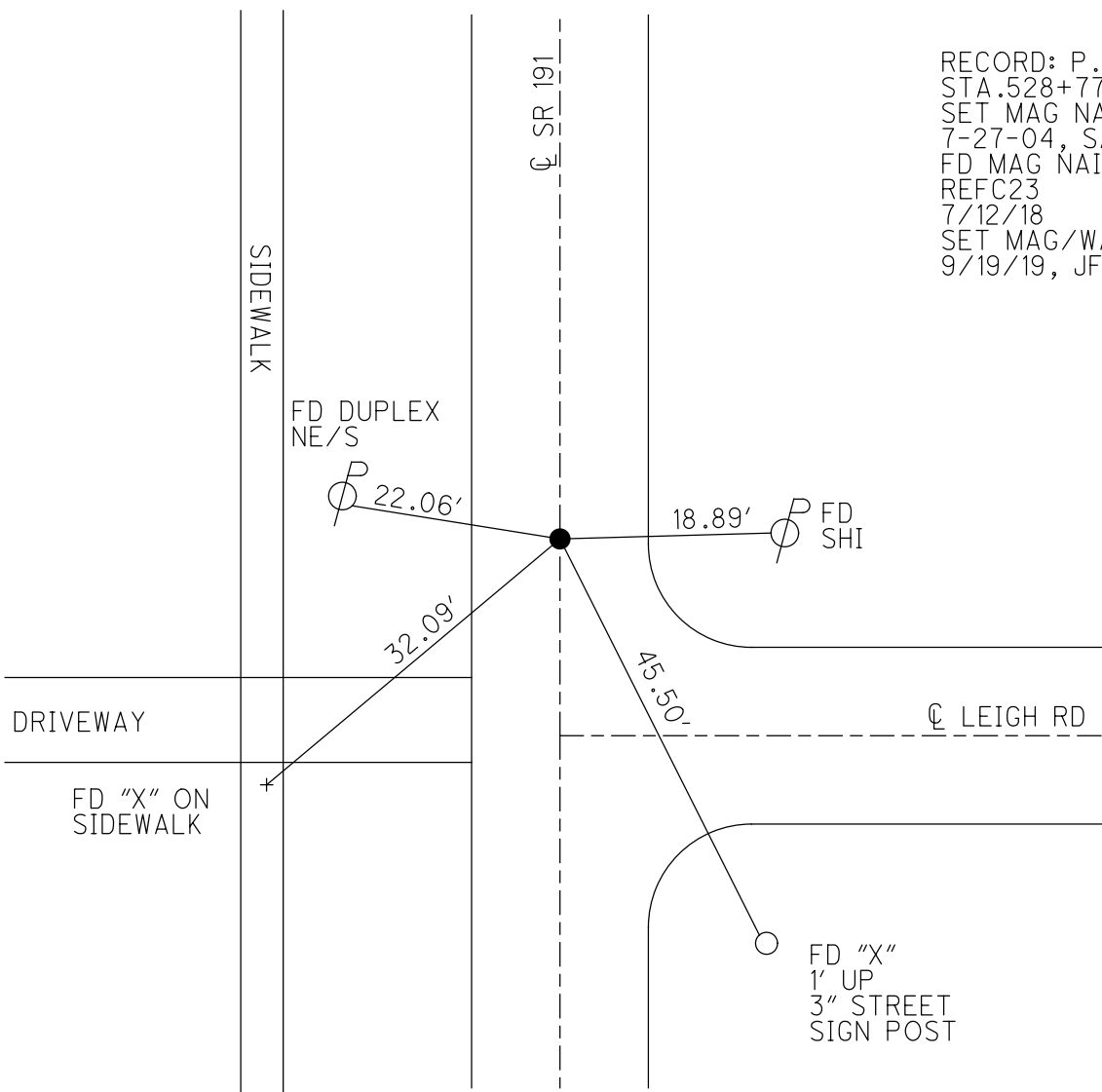
PERSONNEL _____ REFERENCE NO. 23 C SHEET 27 OF 34
 NOTES RHOADES DATE 7/12/18 ROUTE SR 191
 H.C. LEU WEATHER CLEAR COUNTY WILLIAMS
 R.C. HAGEMEYER TEMP. 74° TOWNSHIP BRADY
 DWG BY NASON PID 92373 SECTION 8
 T 7 N R 4 E

TYPE MONUMENT MAG NAIL
 ON SURFACE - ~~BELOW~~ ON _____
 OFFSET ϕ PAVEMENT 1.2' LT : ~~RT~~
 - TO - EDGE PAVEMENT
 STATION: 528+74.14



HORIZ.DATUM: NAD83(2011) GEOID: 2012A
 GRID: NORTHING: 700761.432 EASTING: 1439373.527

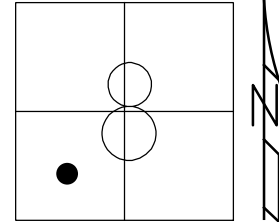
RECORD: P.O.T.
 STA.528+77.04
 SET MAG NAIL
 7-27-04, SAH
 FD MAG NAIL
 REFC23
 7/12/18
 SET MAG/WASHER
 9/19/19, JFO



O.D.O.T. DISTRICT 2 SURVEY OFFICE (USE ONLY)

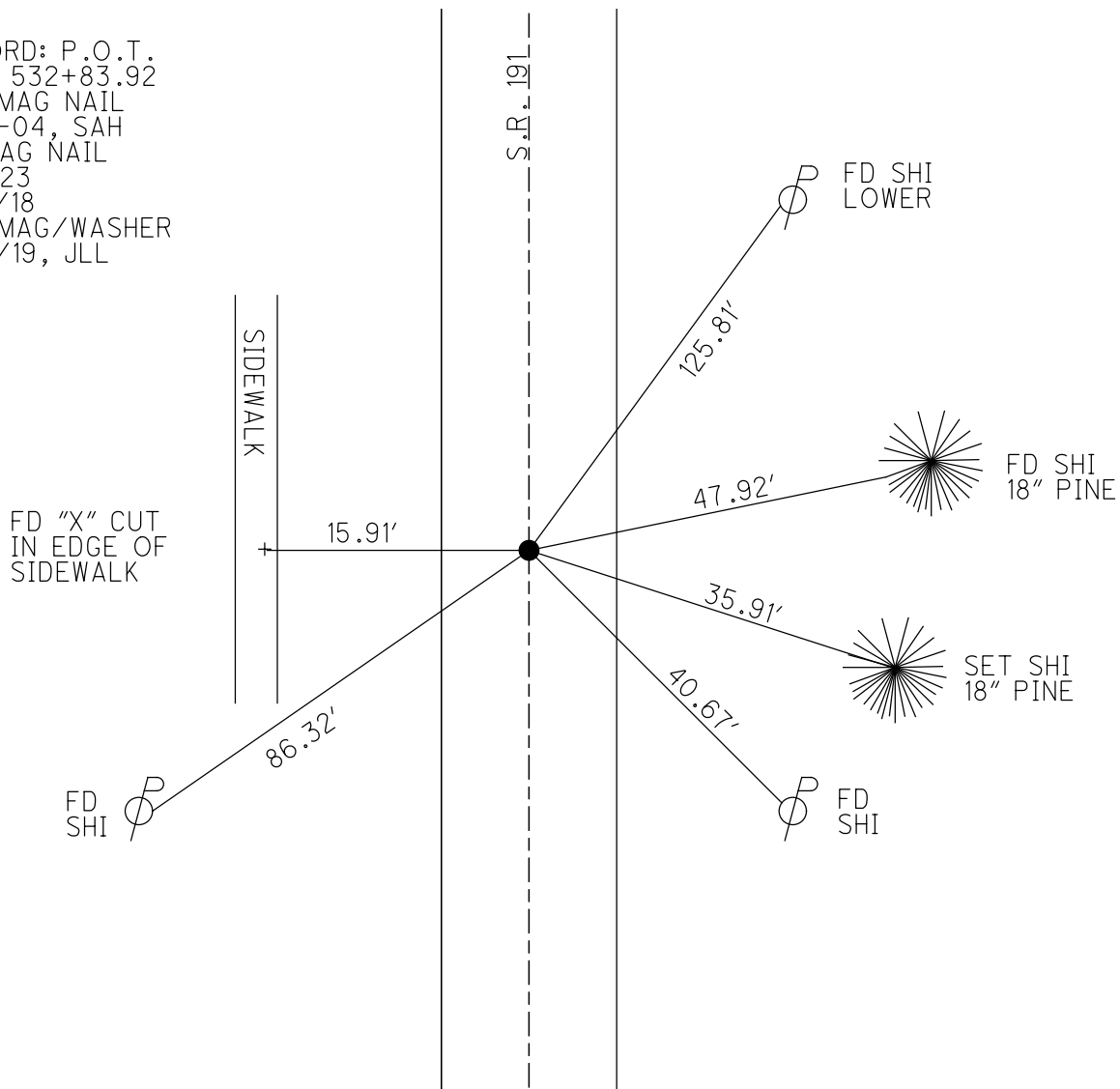
PERSONNEL _____ REFERENCE NO. 23 D SHEET 28 OF 34
 NOTES RHOADES DATE 7/12/18 ROUTE SR 191
 H.C. LEU WEATHER CLEAR COUNTY WILLIAMS
 R.C. HAGEMeyer TEMP. 75° TOWNSHIP BRADY
 DWG BY NASON PID 92373 SECTION 8
 T 7 N R 4 E

TYPE MONUMENT MAG NAIL
 ON SURFACE - ~~BELOW~~ ON _____
 OFFSET \odot PAVEMENT 1' LT : ~~RT~~
10' TO RT EDGE PAVEMENT
 STATION: 532+80.95



HORZ.DATUM: NAD83(2011) GEOID: 2012A
 GRID: NORTHING: 701168.217 EASTING: 1439375.772

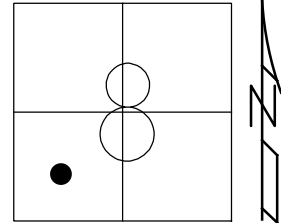
RECORD: P.O.T.
 STA. 532+83.92
 SET MAG NAIL
 7-27-04, SAH
 FD MAG NAIL
 REFD23
 7/12/18
 SET MAG/WASHER
 9/19/19, JLL



O.D.O.T. DISTRICT 2 SURVEY OFFICE (USE ONLY)

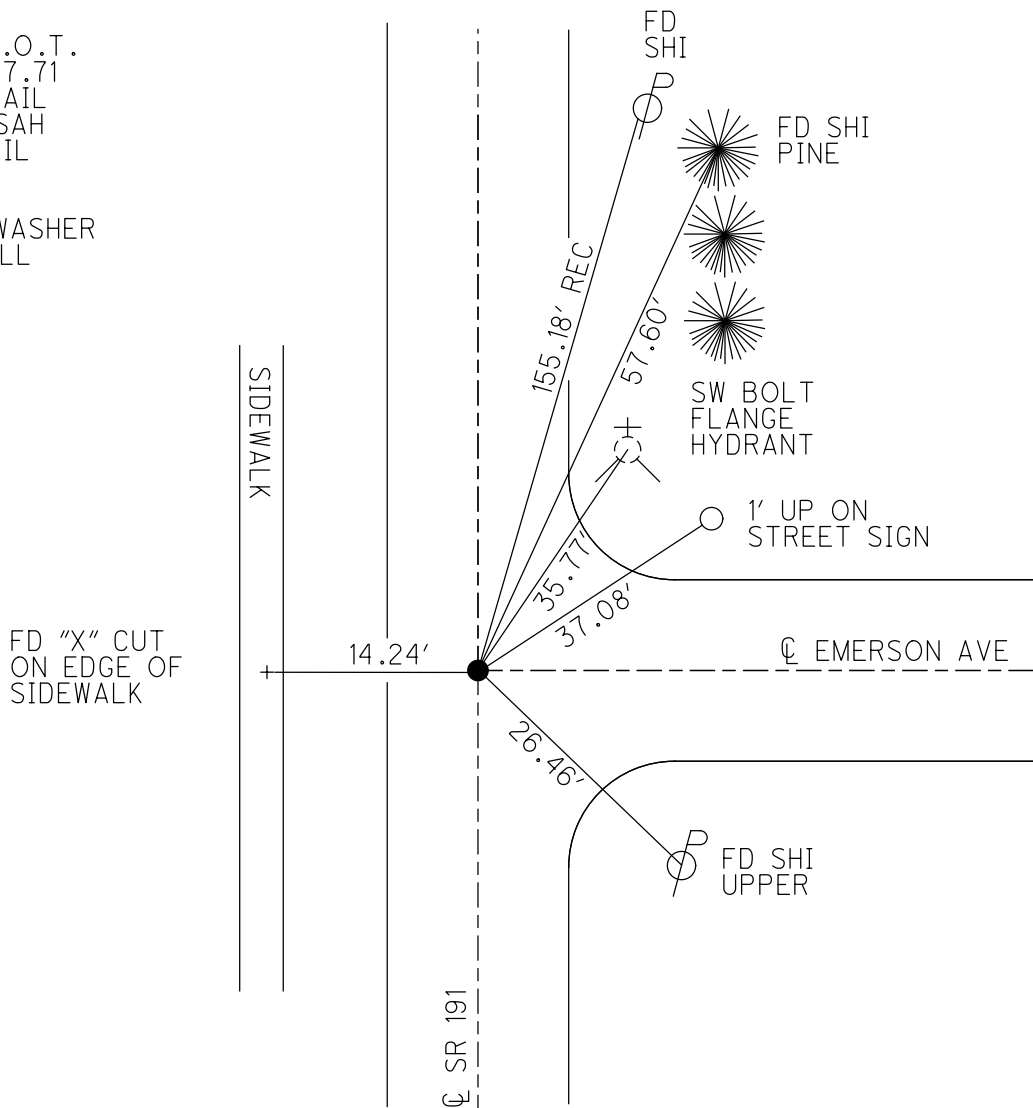
PERSONNEL _____ REFERENCE NO. 23 E SHEET 29 OF 34
 NOTES RHOADES DATE 7/12/18 ROUTE SR 191
 H.C. LEU WEATHER CLEAR COUNTY WILLIAMS
 R.C. HAGEMeyer TEMP. 75° TOWNSHIP BRADY
 DWG BY NASON PID 92373 SECTION 8
 T 7 N R 4 E

TYPE MONUMENT MAG NAIL
 ON SURFACE - ~~BELOW~~ ON _____
 OFFSET C PAVEMENT 1.6' LT : ~~RT~~
9.0' TO LT EDGE PAVEMENT
 STATION: 534+24.41



HORZ. DATUM: NAD83(2011) GEOID: 12A
 GRID: NORTHING: 701311.676 EASTING: 1439376.574

RECORD: P.O.T.
 STA. 537+27.71
 SET MAG NAIL
 7-27-04, SAH
 FD MAG NAIL
 REFE23
 7/12/18
 SET MAG/WASHER
 9/19/19, JLL



O.D.O.T. DISTRICT 2 SURVEY OFFICE (USE ONLY)

PERSONNEL

REFERENCE NO. 23 F

SHEET 30 OF 34

NOTES RHOADES
 H.C. LEU
 R.C. HAGEMeyer

DATE 7/12/18
 WEATHER CLEAR
 TEMP. 75°

ROUTE SR 191
 COUNTY WILLIAMS
 TOWNSHIP BRADY
 SECTION 8
 T 7 N R 4 E

DWG BY NASON PID 92373

TYPE MONUMENT MAG SHANK

~~ON SURFACE~~ - BELOW 1"

OFFSET 1.8' ~~LT~~ : RT
10.8' TO RT EDGE PAVEMENT

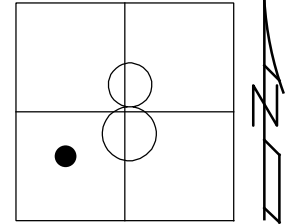
STATION: 535+39.69

HORZ. DATUM: NAD83(2011)

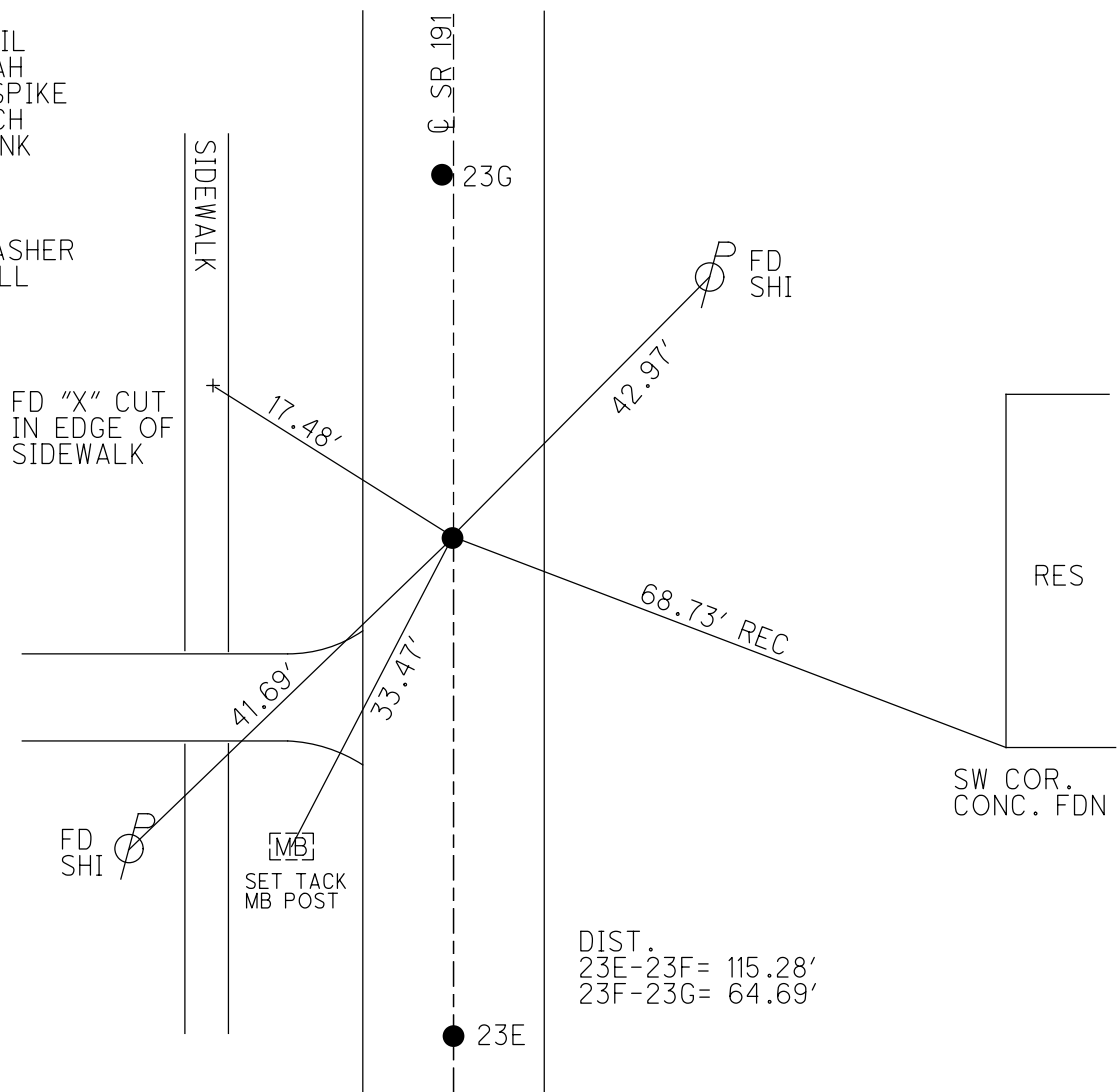
GEOID: 2012A

GRID: NORTHING: 701426.880

EASTING: 1439377.280



RECORD:
 SET MAG NAIL
 7-27-04, SAH
 FD SM.R.R.SPIKE
 6/15/04, DCH
 FD MAG SHANK
 1" DOWN
 REFF23
 7/12/18
 SET MAG/WASHER
 9/19/19/, JLL



DIST.
 23E-23F = 115.28'
 23F-23G = 64.69'

O.D.O.T. DISTRICT 2 SURVEY OFFICE (USE ONLY)

PERSONNEL

REFERENCE NO. 23 G

SHEET 31 OF 34

NOTES RHOADES

DATE 7/12/18

ROUTE SR 191

H.C. LEU

WEATHER CLEAR

COUNTY WILLIAMS

R.C. HAGEMEYER

TEMP. 75°

TOWNSHIP BRADY

SECTION 8

DWG BY NASON

PID 102827

T 7 N R 4 E

TYPE MONUMENT MAG NAIL

ON SURFACE - ~~BELOW~~ ON

OFFSET Q PAVEMENT 1' LT : ~~RT~~

10.8' TO RT EDGE PAVEMENT

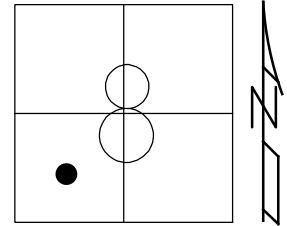
STATION: 536+04.37

HORIZ.DATUM: NAD83(2011)

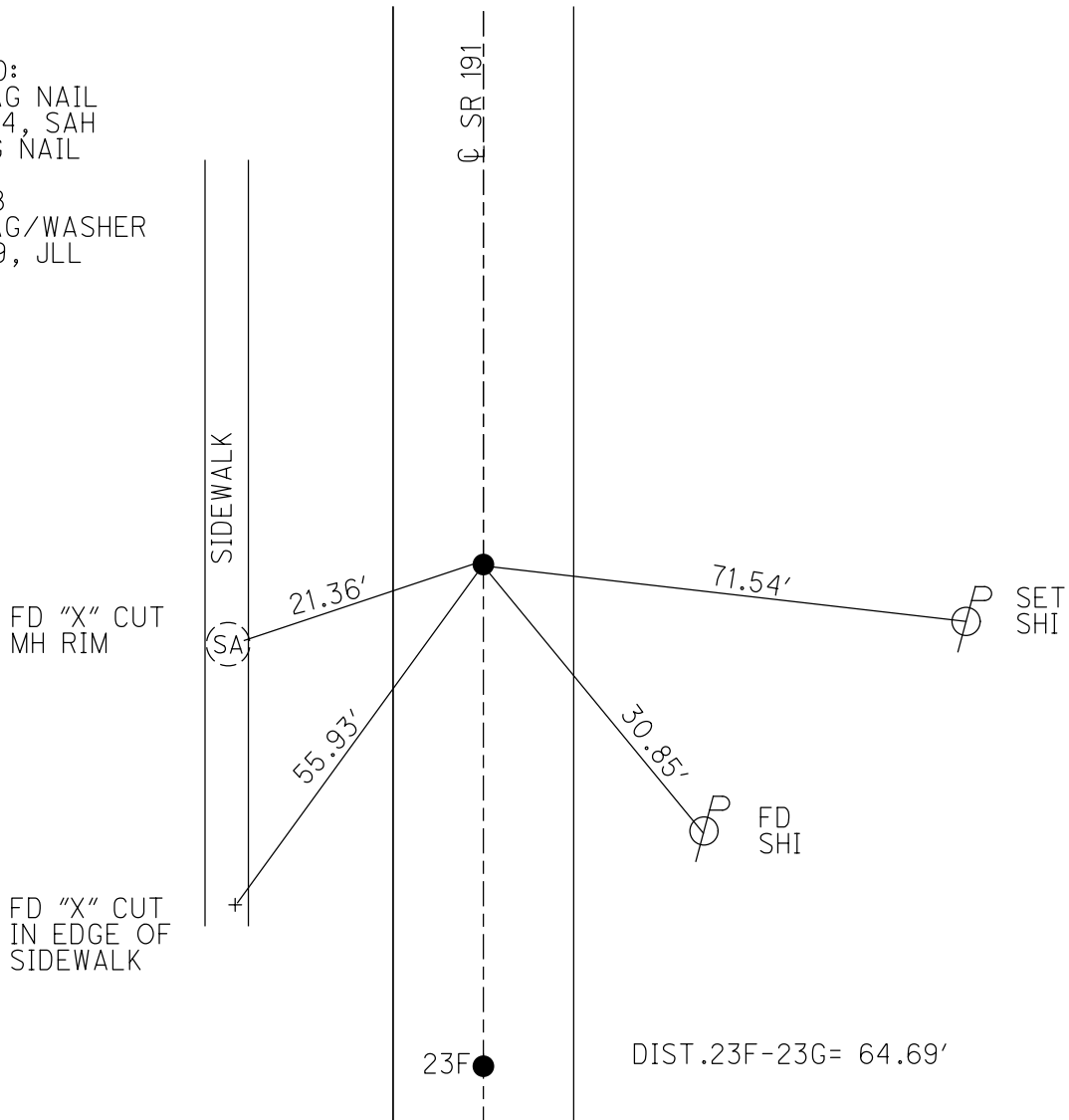
GEOID: 2012A

GRID: NORTHING: 701491.621

EASTING: 1439377.614



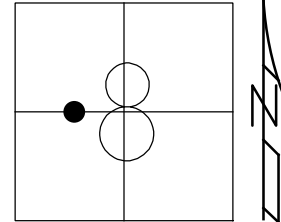
RECORD:
 SET MAG NAIL
 7-27-04, SAH
 FD MAG NAIL
 REFG23
 7/12/18
 SET MAG/WASHER
 9/19/19, JLL



O.D.O.T. DISTRICT 2 SURVEY OFFICE (USE ONLY)

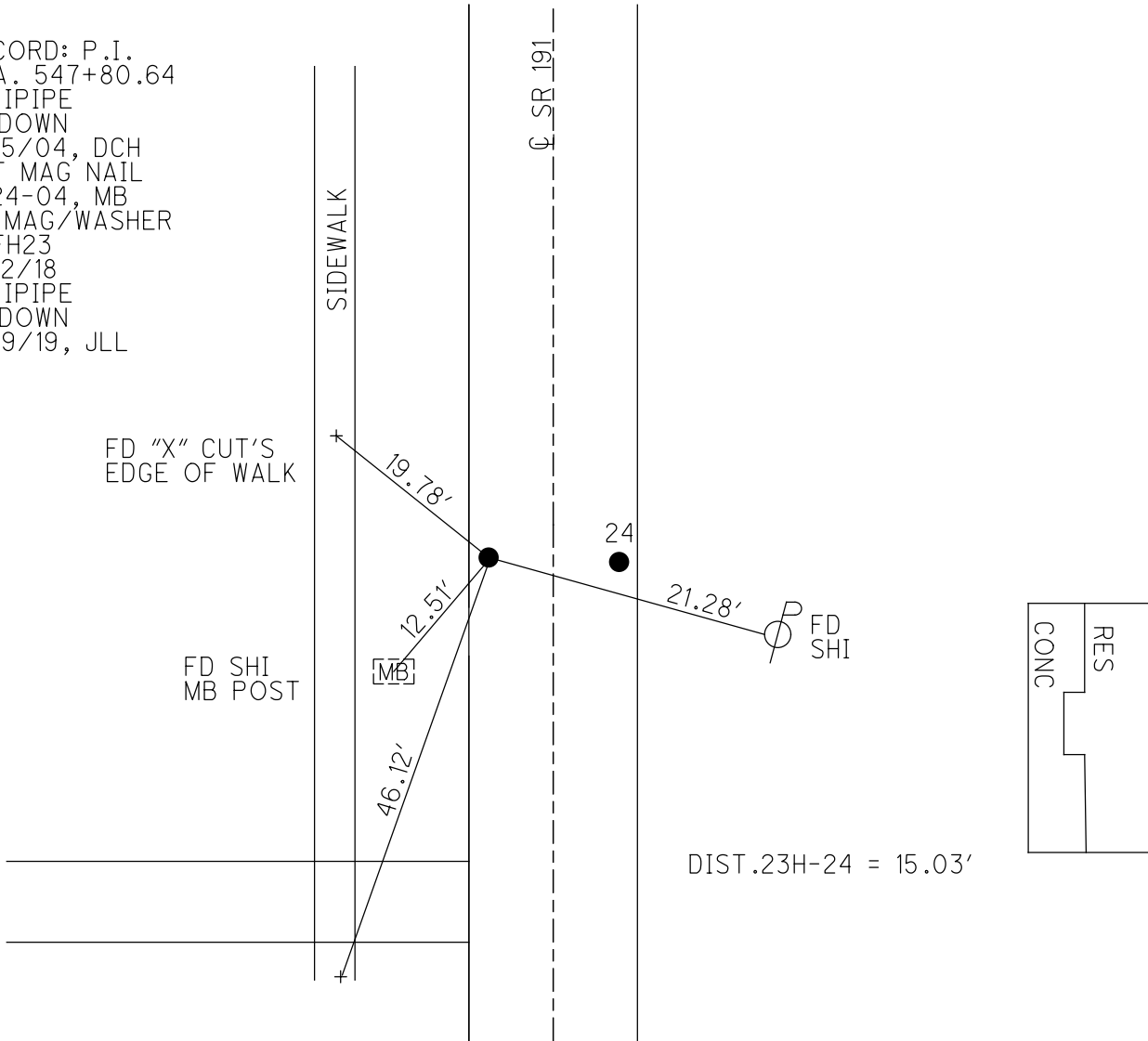
PERSONNEL _____ REFERENCE NO. 23 H SHEET 32 OF 34
 NOTES RHOADES DATE 7/12/18 ROUTE SR 191
 H.C. LEU WEATHER CLEAR COUNTY WILLIAMS
 R.C. HAGEMeyer TEMP. 75° TOWNSHIP BRADY
 DWG BY NASON PID 102827 SECTION 8
 T 7 N R 4 E

TYPE MONUMENT MAG/WASHER
 ON SURFACE - ~~BELOW~~ ON _____
 OFFSET \odot PAVEMENT 7.1' LT : ~~RT~~
1.7' TO LT EDGE PAVEMENT
 STATION: 547+77.46



HORIZ.DATUM: NAD83(2011) GEOID: 2012A
 GRID: NORTHING: 702664.620 EASTING: 1439384.214

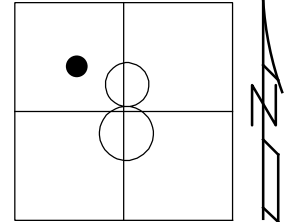
RECORD: P.I.
 STA. 547+80.64
 FD IPIPE
 2" DOWN
 6/15/04, DCH
 SET MAG NAIL
 8-24-04, MB
 FD MAG/WASHER
 REFH23
 7/12/18
 FD IPIPE
 3" DOWN
 9/19/19, JLL



O.D.O.T. DISTRICT 2 SURVEY OFFICE (USE ONLY)

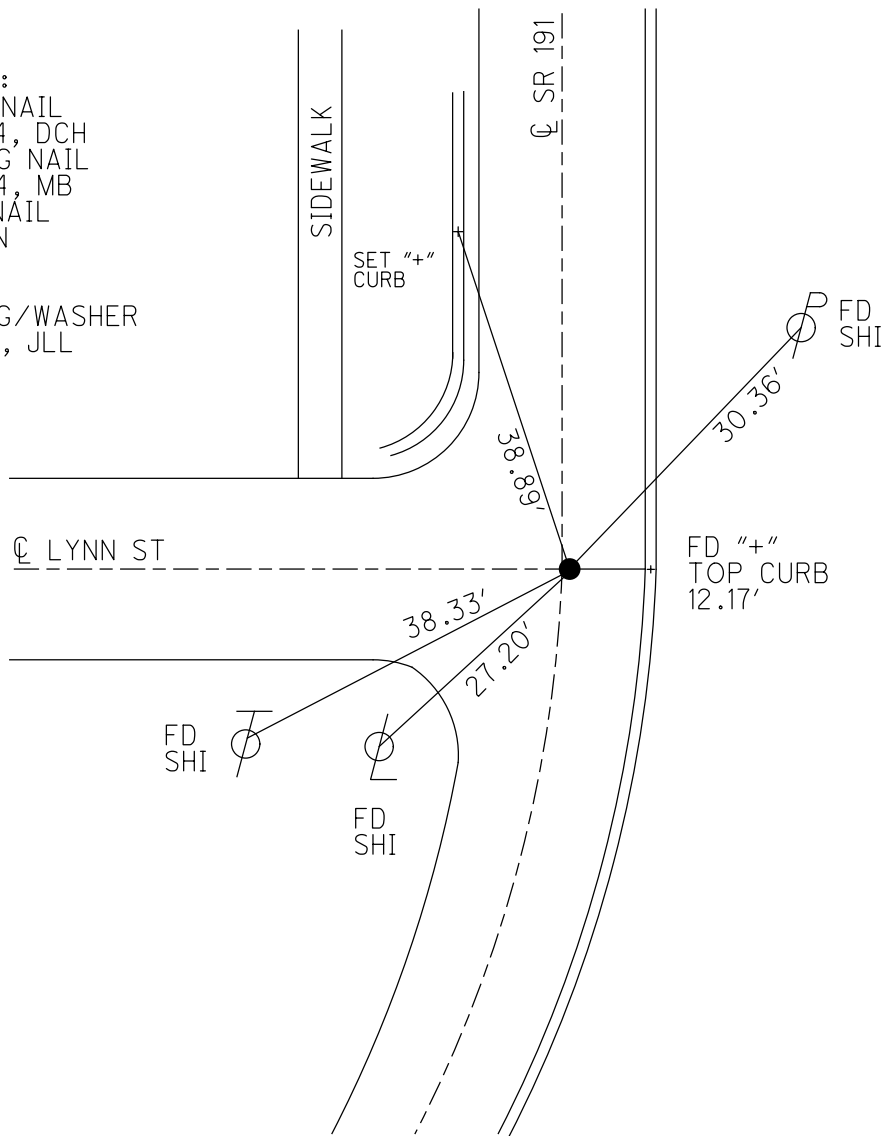
PERSONNEL _____ REFERENCE NO. 24 A SHEET 34 OF 34
 NOTES AUBLE DATE 9/19/19 ROUTE SR 191
 H.C. LEU WEATHER CLEAR COUNTY WILLIAMS
 R.C. NASON TEMP. 57° TOWNSHIP BRADY
 DWG BY NASON PID 102827 SECTION 8
 T 7 N R 4 E

TYPE MONUMENT MAG/WASHER
 ON SURFACE - ~~BELOW~~ ON
 OFFSET Q PAVEMENT ON LT : RT
12' TO RT EDGE PAVEMENT
 STATION: 566+49.46



HORZ. DATUM: NAD83(2011) GEOID: 2012A
 GRID: NORTHING: 704459.891 EASTING: 1439471.646

RECORD:
 FD P.K.NAIL
 6/15/04, DCH
 SET MAG NAIL
 8-24-04, MB
 FD PK NAIL
 5" DOWN
 REFA24
 7/12/18
 SET MAG/WASHER
 9/19/19, JLL



PERSONNEL TITLE PERSONNEL TITLE

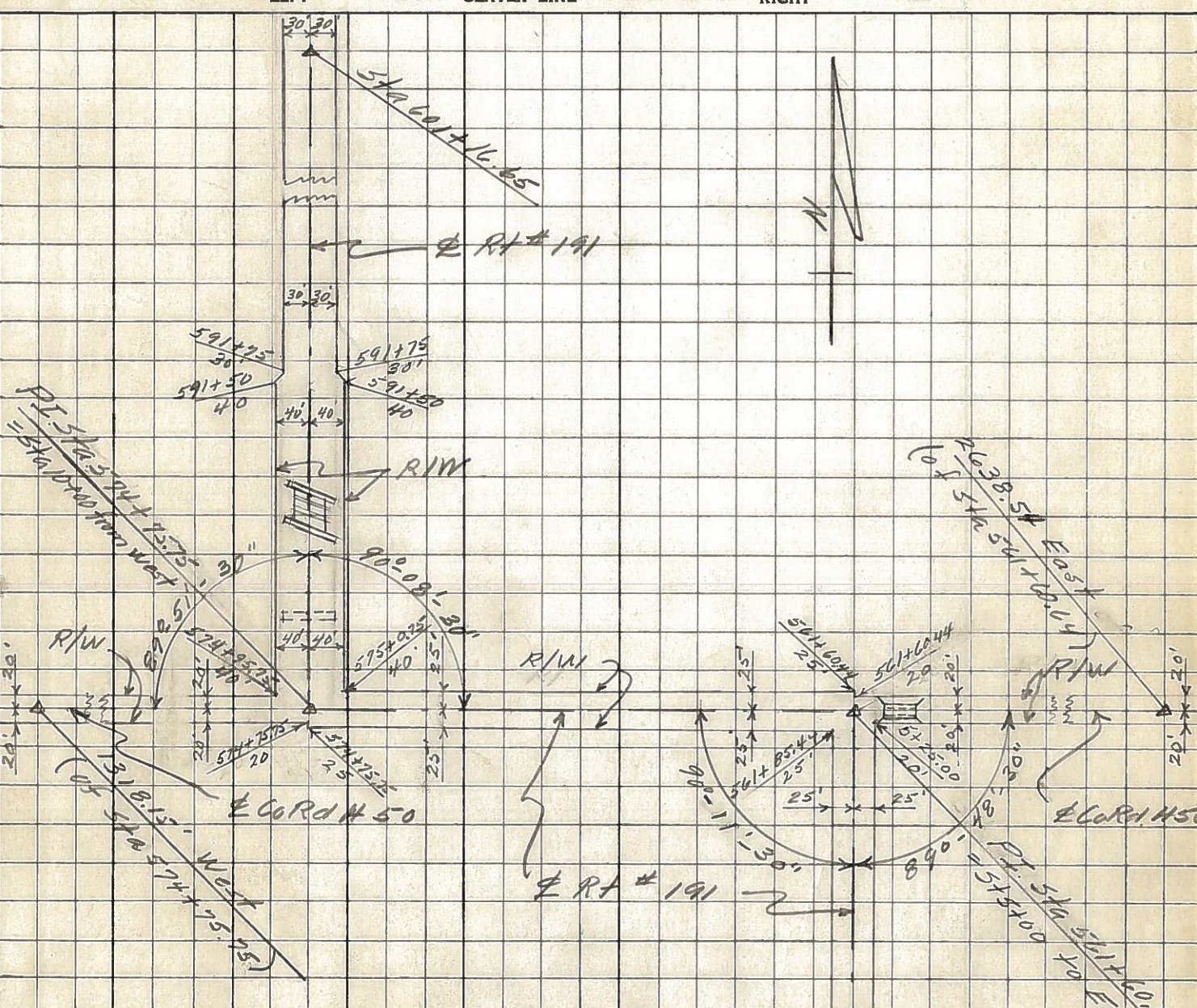
Louys Knape
 Passetall Newcomb
 Wise
 Erikson

COUNTY WV. DATE 6-19-67

S. R. 191 WEATHER Fair

SEC. 2 1/2 mi N of Stryker TEMP. 70°

DESCRIPTION Alignment and R/W JOB NO.



Note - R/W limits are believed to be correct as shown.

Reference = Deed Record book Vol. # 145 pgs. 151 to 171 of Brady & Springfield Twp. in Recorder's office, Bryan O. also State Highway Construction plan dated 1959 or WV 191-9.19, 5 structures. (Existing 60' R/W back of Sta 574+75.95 is incorrect)

Copy to GHS
 7-5-67
 CW

