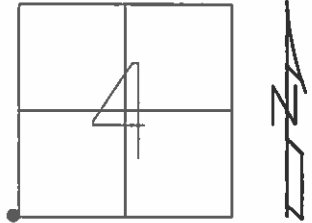


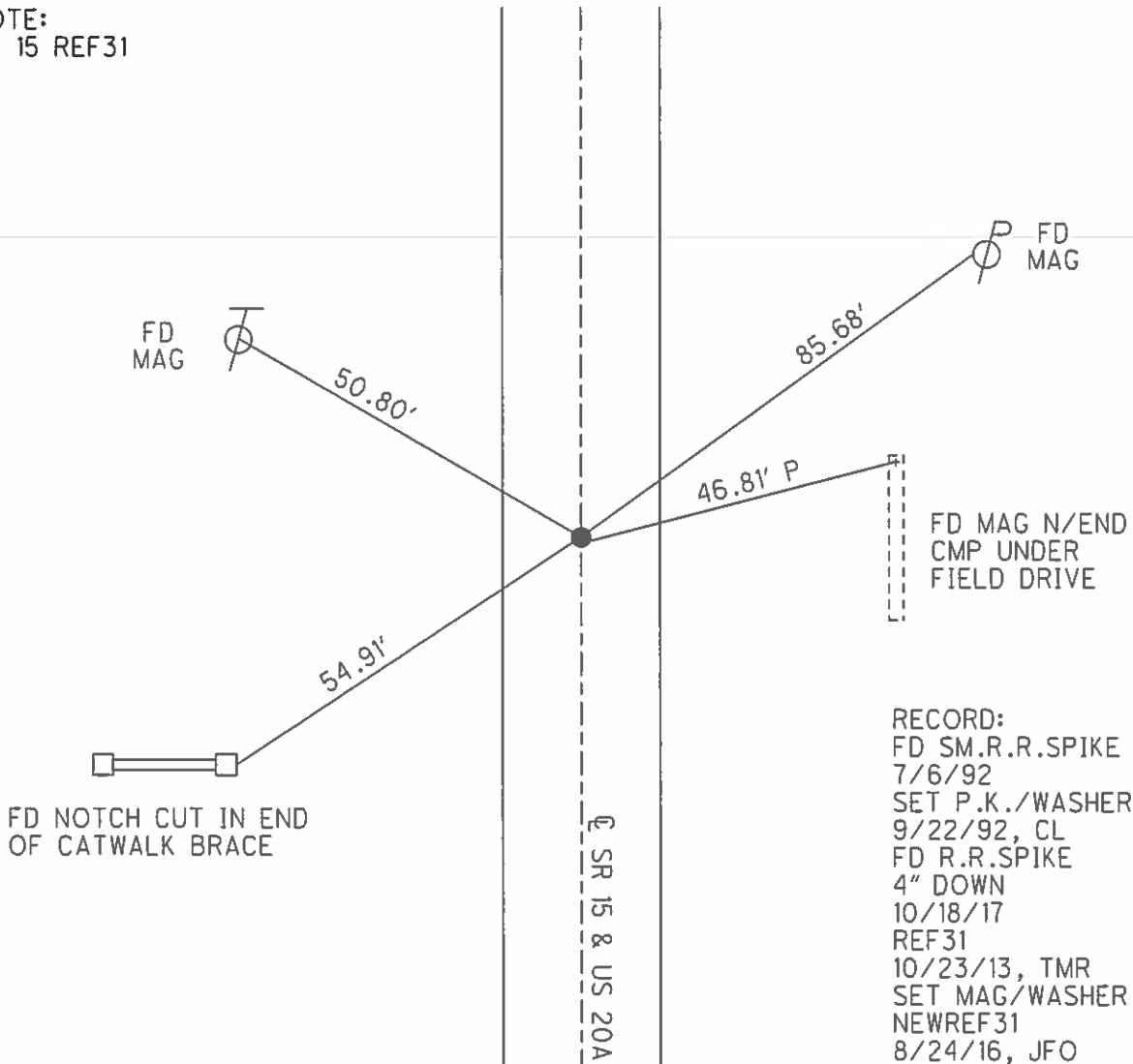
O.D.O.T. DISTRICT 2 SURVEY OFFICE (USE ONLY)

PERSONNEL \_\_\_\_\_ REFERENCE NO. 4 D SHEET 4 OF 21  
 NOTES LEU DATE 3/29/16 ROUTE US 20A  
 H.C. HOMAN WEATHER SUNNY COUNTY WILLIAMS  
 R.C. LEU TEMP. 32° TOWNSHIP MADISON  
 \_\_\_\_\_ SECTION 4  
 \_\_\_\_\_ T 10 S R 2 W

TYPE MONUMENT R.R.SPIKE  
~~ON SURFACE~~ - BELOW 4"  
~~LEFT~~ - CL PAV'T - ~~RIGHT~~ ON  
12.3' TO W EDGE PAVEMENT  
 S.L.M. 124+16.13  
 GRID: NORTHING: 719010.130 EASTING: 1407057.375



NOTE:  
 SR 15 REF31

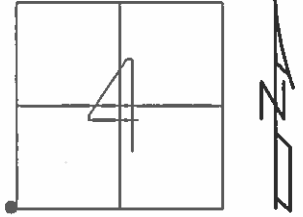


RECORD:  
 FD SM.R.R.SPIKE  
 7/6/92  
 SET P.K./WASHER  
 9/22/92, CL  
 FD R.R.SPIKE  
 4" DOWN  
 10/18/17  
 REF31  
 10/23/13, TMR  
 SET MAG/WASHER  
 NEWREF31  
 8/24/16, JFO

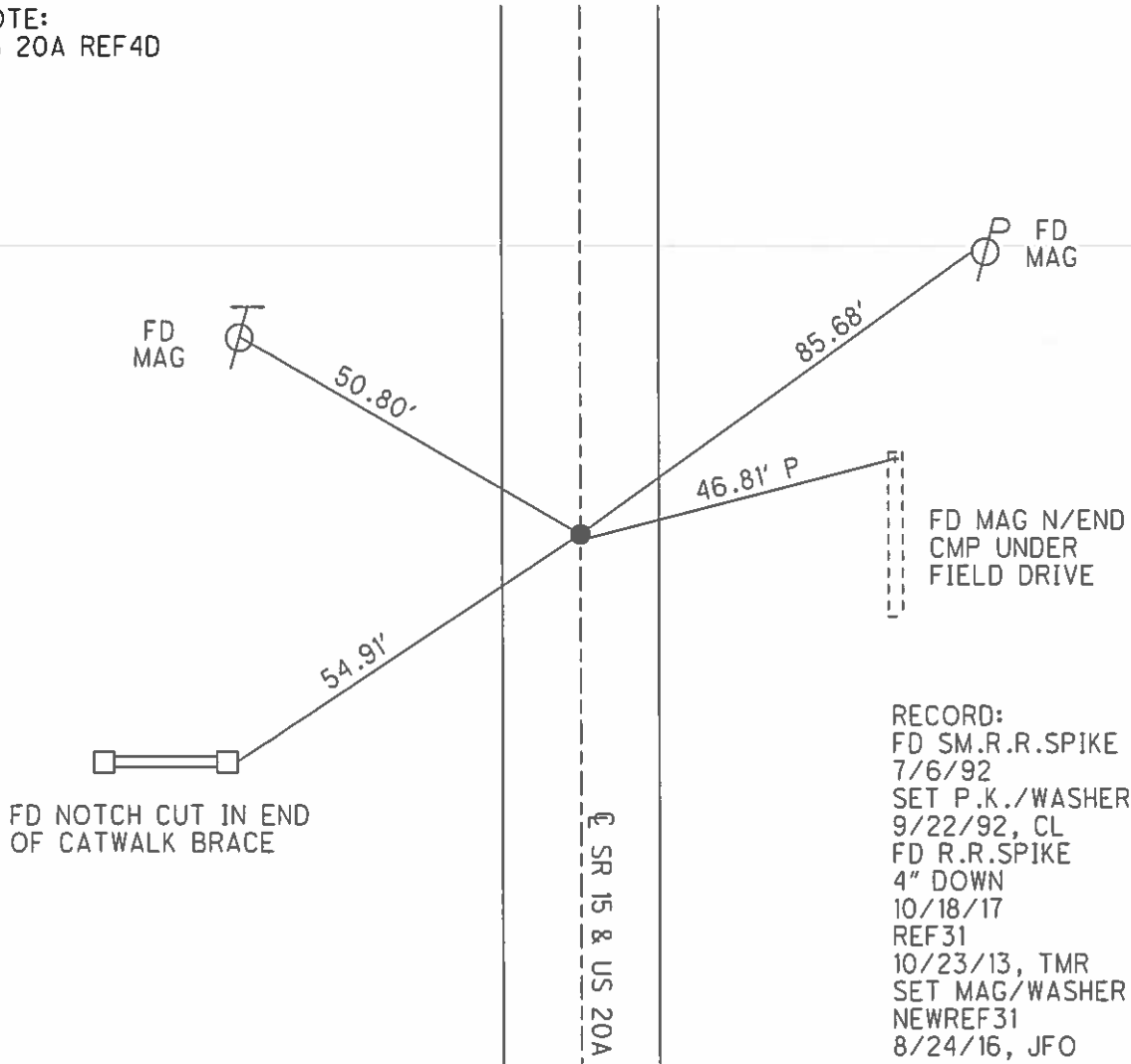
O.D.O.T. DISTRICT 2 SURVEY OFFICE (USE ONLY)

PERSONNEL \_\_\_\_\_ REFERENCE NO. 31 SHEET 4 OF 40  
 NOTES LEU \_\_\_\_\_ DATE 3/29/16 ROUTE SR 15  
 H.C. HOMAN \_\_\_\_\_ WEATHER SUNNY COUNTY WILLIAMS  
 R.C. LEU \_\_\_\_\_ TEMP. 32° TOWNSHIP MADISON  
 \_\_\_\_\_ SECTION 4  
 \_\_\_\_\_ T 10 S R 2 W

TYPE MONUMENT R.R.SPIKE  
~~ON SURFACE~~ - BELOW 4"  
~~LEFT~~ - CL PAV'T - ~~RIGHT~~ ON \_\_\_\_\_  
12.3' TO W EDGE PAVEMENT  
 S.L.M. 486+34.30  
 GRID: NORTHING: 719010.130 EASTING: 1407057.375



NOTE:  
US 20A REF4D



RECORD:  
 FD SM.R.R.SPIKE  
 7/6/92  
 SET P.K./WASHER  
 9/22/92, CL  
 FD R.R.SPIKE  
 4" DOWN  
 10/18/17  
 REF31  
 10/23/13, TMR  
 SET MAG/WASHER  
 NEWREF31  
 8/24/16, JFO