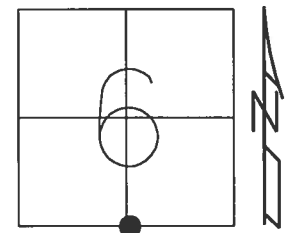


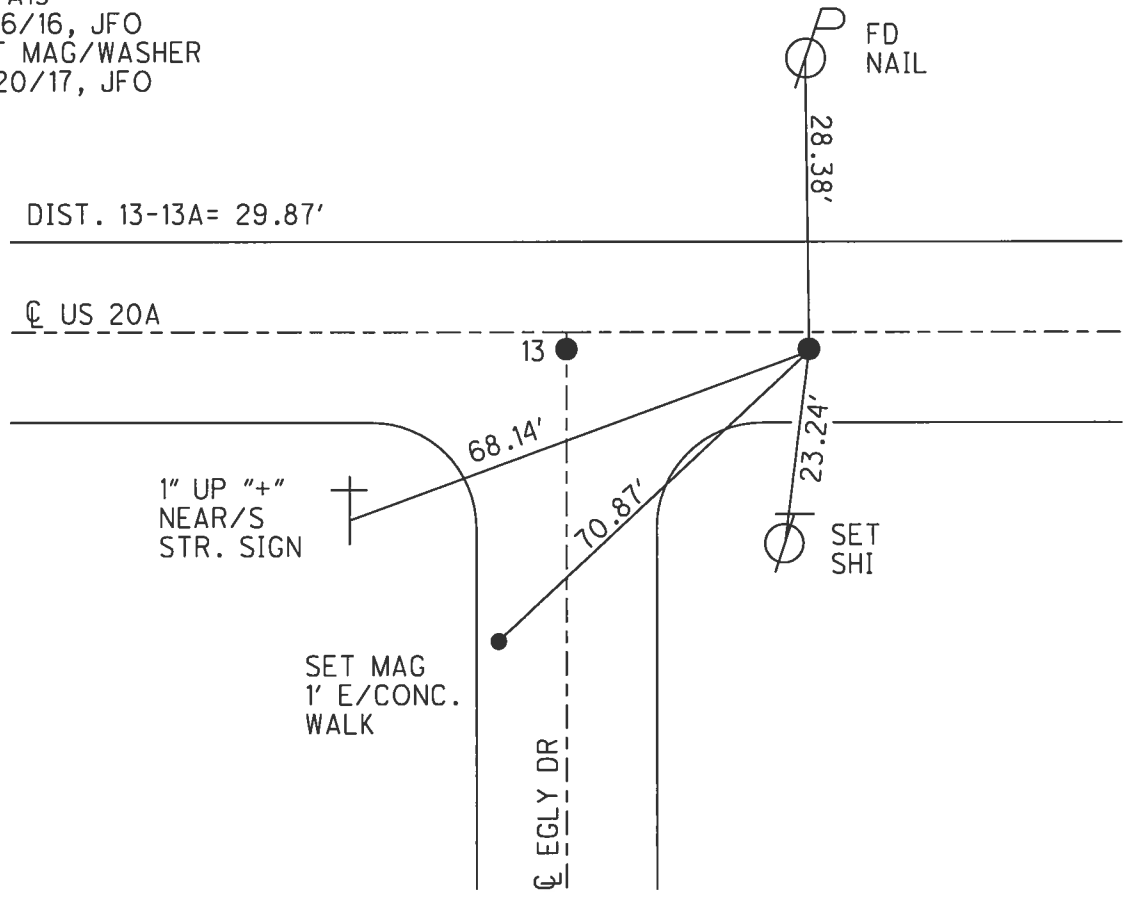
O.D.O.T. DISTRICT 2 SURVEY OFFICE (USE ONLY)

PERSONNEL _____ REFERENCE NO. 13 A SHEET 17 OF 32
 NOTES RHOADES DATE 4/17/17 ROUTE US 20 A
 H.C. O'DONNELL WEATHER SUNNY COUNTY WILLIAMS
 R.C. HELDMAN TEMP. 65° TOWNSHIP BRADY
 SECTION 6
 T 7 N R 4 E

TYPE MONUMENT MAG/WASHER
 ON SURFACE - ~~BELOW~~ ON _____
~~LEFT~~ - Q PAV'T - RIGHT 1'
11.3' TO LT EDGE PAVEMENT
 S.L.M. 544+54.88
 Grid: Northing: 705387.124 Easting: 1435407.924



RECORD:
 STA. 655+65
 FD P.K.NAIL
 5/24/02, MC
 SET MAG/WASHER
 1/2/04, MB
 FD MAG/WASHER
 REFA13
 5/16/16, JFO
 SET MAG/WASHER
 11/20/17, JFO



O.D.O.T. DISTRICT 2 SURVEY OFFICE

PERSONNEL

REFERENCE NO. 13

SHEET 13 OF 28

NOTES Moser

H.C. Moser

R.C. Homan

DATE 5-24-02

WEATHER cloudy

TEMP. +65°

ROUTE U.S. 20-A

COUNTY Williams

TOWNSHIP Brady

SECTION 6

T. 7 N. R. 4 E.

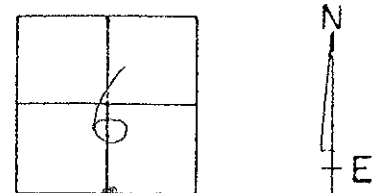
TYPE MONUMENT P.K. NAILS A, B + C

ON SURFACE - ~~BELOW~~ A, B + C on surface

~~LEFT - C PAV'T.~~ - RIGHT 1' RT OF C PAV'T

11.3' TO LT. EDGE PAVEMENT 1 & B

S.L.M. "A"-655+35 / "B"-655+65



30.06' Between "A" + "B"

150.02' (Rec) Between "B" + "C"

RESET MAGS/WASHERS

1-02-04

M.B.

