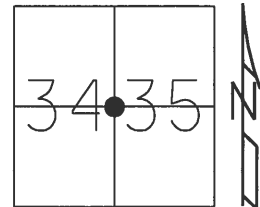


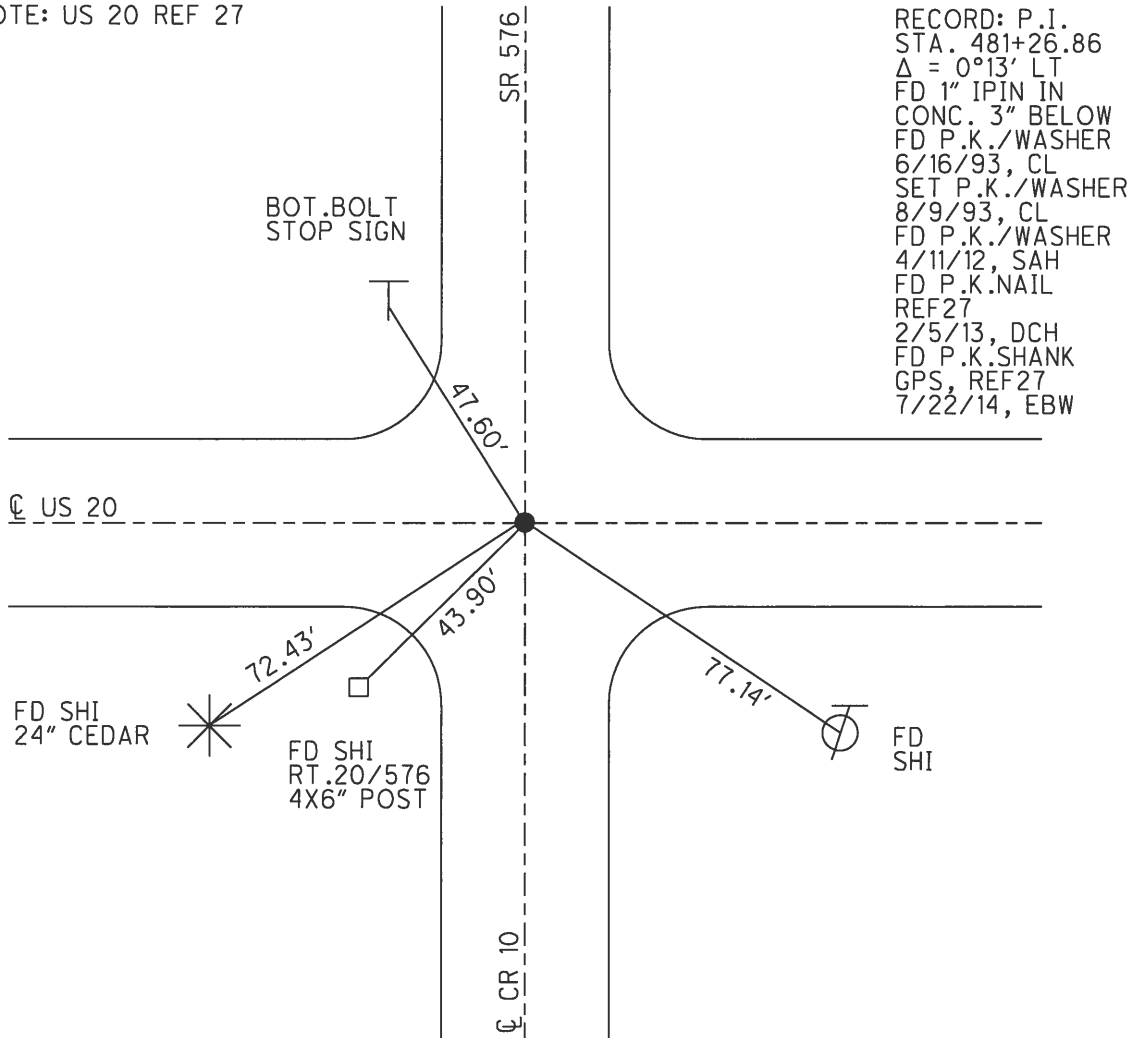
O.D.O.T. DISTRICT 2 SURVEY OFFICE (USE ONLY)

PERSONNEL _____ REFERENCE NO. 30 A SHEET 31 OF 32
 NOTES RHOADES DATE 5/2/13 ROUTE SR 576
 H.C. CODER WEATHER FAIR COUNTY WILLIAMS
 R.C. LAU TEMP. 70° TOWNSHIP BRIDGEWATER
 _____ SECTION 34, 35
 _____ T 9 S R 3 W

TYPE MONUMENT P.K./WASHER
 ON SURFACE - ~~BELOW~~ ON
~~LEFT~~ - ☉ PAV'T - ~~RIGHT~~ ON _____
 _____ TO _____ EDGE PAVEMENT
 S.L.M. 820+79.82
 Grid: Northing: 727324.594 Easting: 1386091.778



NOTE: US 20 REF 27



RECORD: P.I.
 STA. 481+26.86
 $\Delta = 0^{\circ}13' LT$
 FD 1" IPIN IN
 CONC. 3" BELOW
 FD P.K./WASHER
 6/16/93, CL
 SET P.K./WASHER
 8/9/93, CL
 FD P.K./WASHER
 4/11/12, SAH
 FD P.K.NAIL
 REF27
 2/5/13, DCH
 FD P.K.SHANK
 GPS, REF27
 7/22/14, EBW

O.D.O.T. DISTRICT 2 SURVEY OFFICE

PERSONNEL

REFERENCE NO. 27

SHEET 1 OF 9

NOTES LOEHRKE

DATE 6/16/93

ROUTE US 20

H.C. ROMETO

WEATHER PT. CLOUDY

COUNTY WILLIAMS

R.C. CANTERBURY

TEMP. 70°

TOWNSHIP BRIDGEWATER

SECTION 34, 35

T 9 S R 2 E

TYPE MONUMENT P.K./WASHER

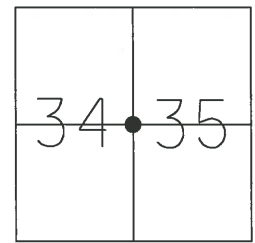
ON SURFACE - BELOW ON

LEFT - ☉ PAV'T - RIGHT ON

TO EDGE PAVEMENT

S.L.M. 482+36

Grid: Northing: _____ Easting: _____



RECORD 1983:
P.I. STA. 481+26.86
 $\Delta = 0^{\circ} - 13''$ LT.
FD 1" IRON PIN IN
CONC. 3" BELOW

SET P.K./WASHER
8/9/93

30A

