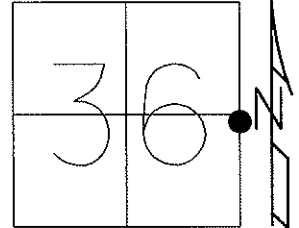


O.D.O.T. DISTRICT 2 SURVEY OFFICE (USE ONLY)

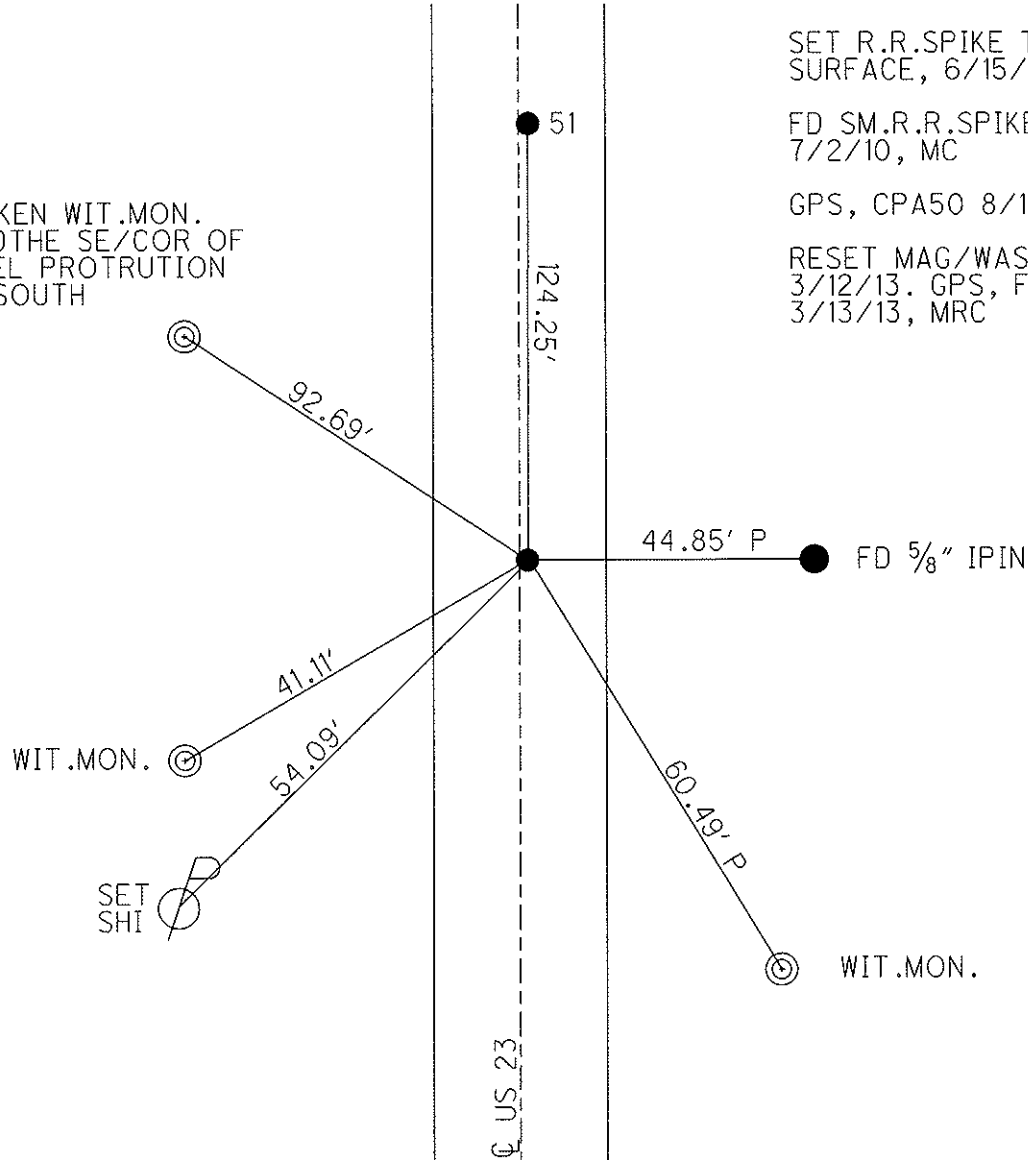
PERSONNEL	REFERENCE NO. <u>50 A</u>	SHEET <u>3</u> OF <u>13</u>
NOTES <u>HUSS</u>	DATE <u>4/20/12</u>	ROUTE <u>US 23</u>
H.C. <u>CANTERBURY</u>	WEATHER <u>CLEAR</u>	COUNTY <u>WOOD</u>
R.C. <u>HOMAN</u>	TEMP. <u>62°</u>	TOWNSHIP <u>TROY</u>
		SECTION <u>36</u>
		T <u>6</u> N R <u>12</u> E

TYPE MONUMENT R.R.SPIKE  
~~ON SURFACE~~ - BELOW 2"  
 LEFT - C PAV'T - ~~RIGHT~~ 0.7'  
10.8' TO LT EDGE PAVEMENT  
 S.L.M. 979+46.31  
 Grid: Northing: 645578.2 Easting: 1717519.0



BROKEN WIT.MON.  
 USED THE SE/COR OF  
 STEEL PROTRUTION  
 TO SOUTH

SET R.R.SPIKE TO  
 SURFACE, 6/15/90, DJC  
 FD SM.R.R.SPIKE  
 7/2/10, MC  
 GPS, CPA50 8/10/10  
 RESET MAG/WASHER  
 3/12/13. GPS, FINA50  
 3/13/13, MRC



# O.D.O.T. DISTRICT 2 SURVEY OFFICE

PERSONNEL

REFERENCE NO. 50-A 51

SHEET 3 OF 10

NOTES 1, Stone

H.C. D. Curtis

DATE 3 May 90

ROUTE US #23

R.C. J. Hauschalter

WEATHER Cloudy

COUNTY Wood

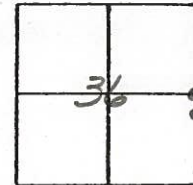
TEMP. 60°

TOWNSHIP Troy

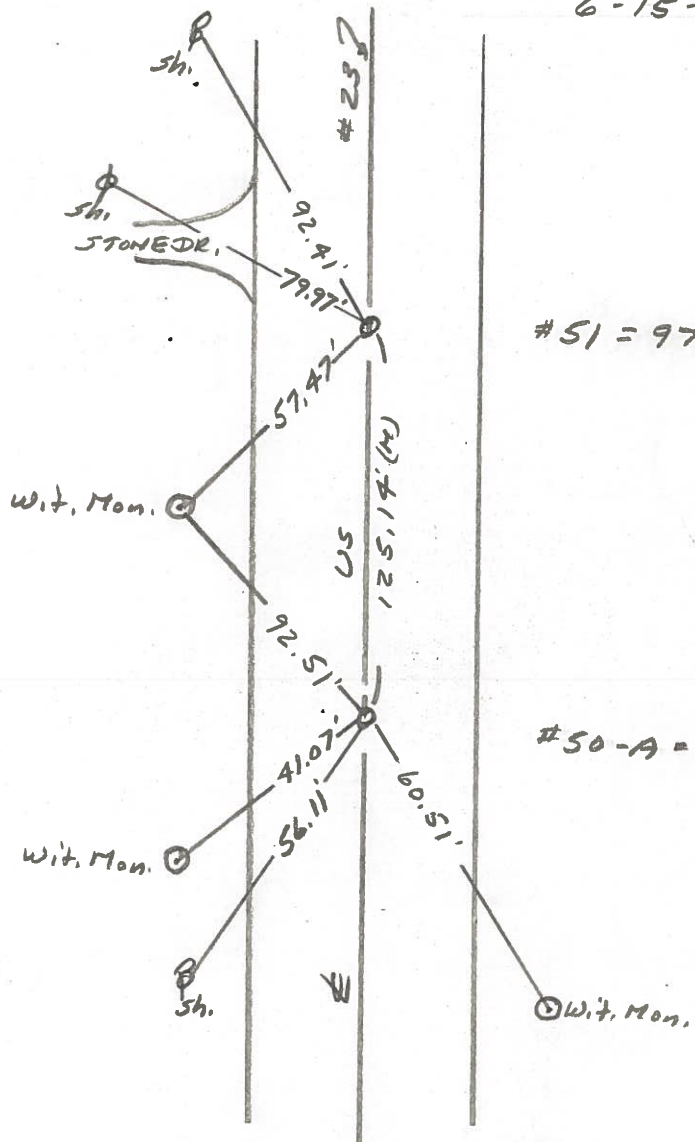
SECTION 36

T \_\_\_ R \_\_\_

TYPE MONUMENT RR Spk.  
 ON SURFACE - BELOW 2" deep (both)  
 LEFT - & PAV'T. - RIGHT \_\_\_\_\_  
 \_\_\_\_\_ TO \_\_\_\_\_ EDGE PAVEMENT  
 S.L.M. \_\_\_\_\_



SET R.R. SPK'S TO SURFACE  
 6-15-90 D/C



#51 = 979+72

#50-A = 978+47

OD.O.T. DISTRICT 2 SURVEY OFFICE

Sht. 3 of 7  
U.S. 23

County WOOD - SAN.

Date 9-8-77

Township TROY

Weather CLEARING

Section 36

Temp. +78°

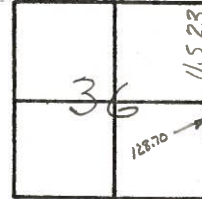
T6N, R12E

Personnel BURNSIDE

SMITH

BOWERS

KNAPE



P.I. STA. 978+99.10 **51**  
 $\Delta = 0^\circ 12' LT.$   
 F.D. P.K. NAIL  
 @ SURFACE

E. & W. INTERIOR LINE  
 SEC. 36

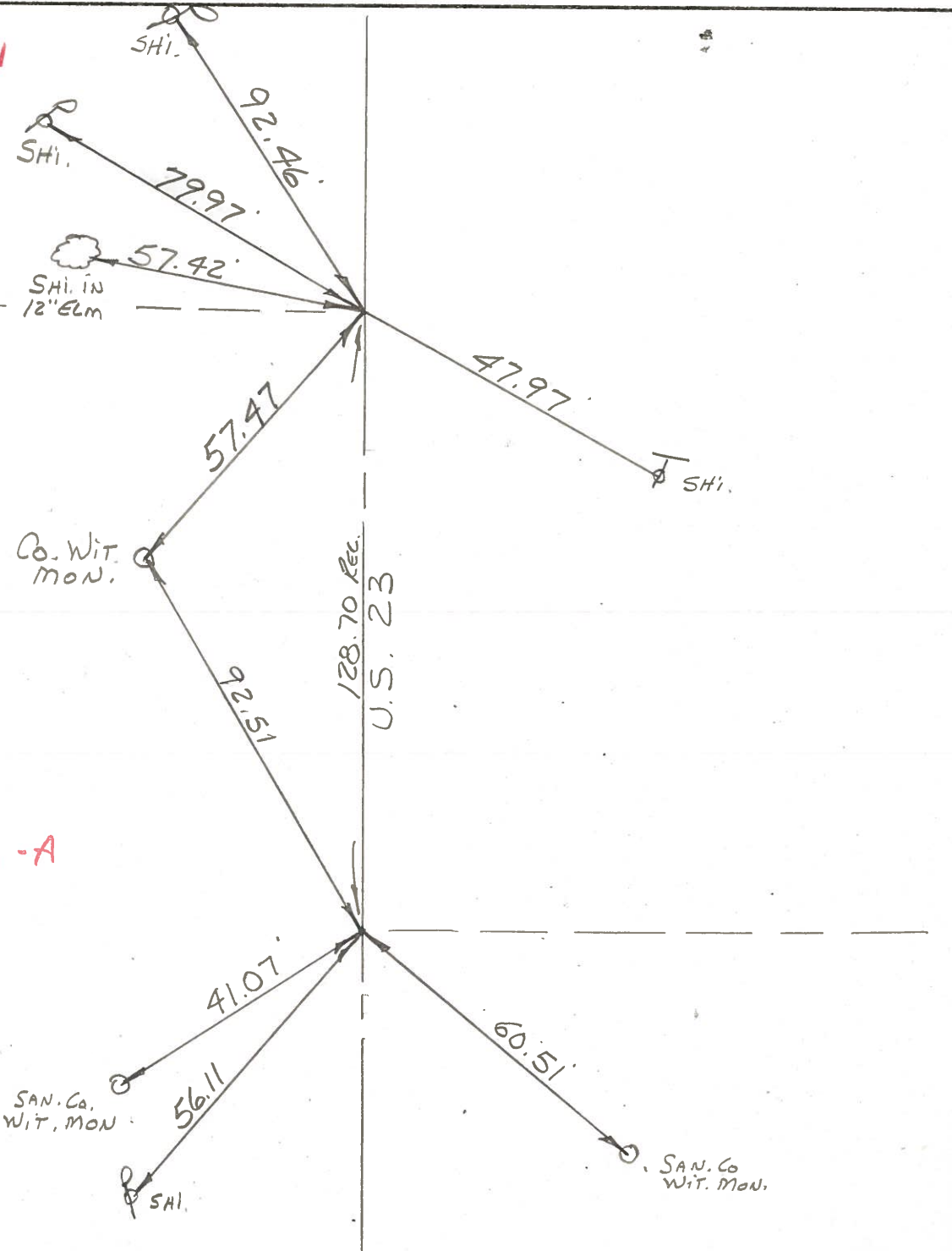
SAN Co. Wit.  
 MON.

**50-A**

F.D. R.R. SPK.  
 @ SURFACE

SAN. Co.  
 WIT. MON.

SAN. Co.  
 WIT. MON.



PERSONNEL	TITLE	PERSONNEL	TITLE	COUNTY	DATE
Sworder	Notes	Rice		San-Woo	6-30-60
Cronin				S. R. #199	WEATHER Clear
Hulcombe				SEC. U.S.#6 to U.S.#20	TEMP. +80°
Sago					

DESCRIPTION Tie for Control Points JOB NO. \_\_\_\_\_

