

O.D.O.T. DISTRICT 2 SURVEY OFFICE (USE ONLY)

PERSONNEL

REFERENCE NO. 10

SHEET OF

NOTES NIESE

DATE 11/20/23

ROUTE SR 25

H.C. NIESE

WEATHER CLEAR

COUNTY WOOD

R.C. ASTON

TEMP. 37°

TOWNSHIP PORTAGE

SECTION 13

DWG BY BARRIERE PID 92133

T 4 N R 10 E

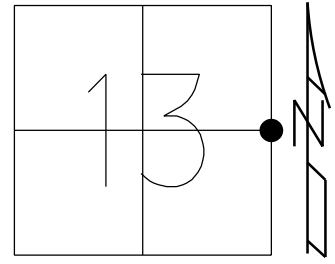
TYPE MONUMENT MONBOX W/ 1" IPIN

ON SURFACE - BELOW ON

OFFSET C PAVEMENT 28.5' RT LT : RT

TO EDGE PAVEMENT

STATION: 239+43.01



HORIZ.DATUM: NAD83(11)/WOOD LDP GEOID: 18

GRID: NORTHING: 598910.304 EASTING: 1652461.229

LDP: NORTHING: 420753.400 EASTING: 163948.725

RECORD:
E 1/4 SEC 13

STA. 509+31.4
FD BRASS MON
FD P.K./WASHER
4/12/01, TMR
SET P.K./WASHER
10-31-01, SAH
FD HOLE
REF10
5-30-18, JFO
FD BRASS DISK
FD MAG NAIL
3/17/22, JFO
FD NEW MONBOX
W/ 1" IPIN
CHECKED W/ GPS
DID NOT PULL TIES
NEWREF10
11/20/23, TDN

C S.B. SR 25

C N.B. SR 25

FD MONBOX
W/ 1" IPIN
M

O.D.O.T. DISTRICT 2 SURVEY OFFICE (USE ONLY)

PERSONNEL _____ REFERENCE NO. 10 SHEET 21 OF 36

NOTES ROADS DATE 5/30/18 ROUTE SR 25

H.C. O'DONNELL WEATHER CLOUDY COUNTY WOOD

R.C. TRENKA TEMP. 82° TOWNSHIP LIBERTY

DWG BY MILLER PID NO PID SECTION 13

T 4 N R 10 E

TYPE MONUMENT _____ HOLE _____

ON SURFACE - ~~BELOW~~ ON _____

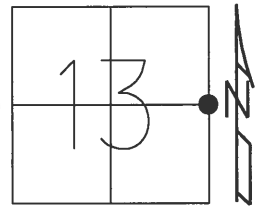
OFFSET $\frac{1}{2}$ PAVEMENT 0.2' ~~RT~~ : RT

11.3' TO LT EDGE PAVEMENT

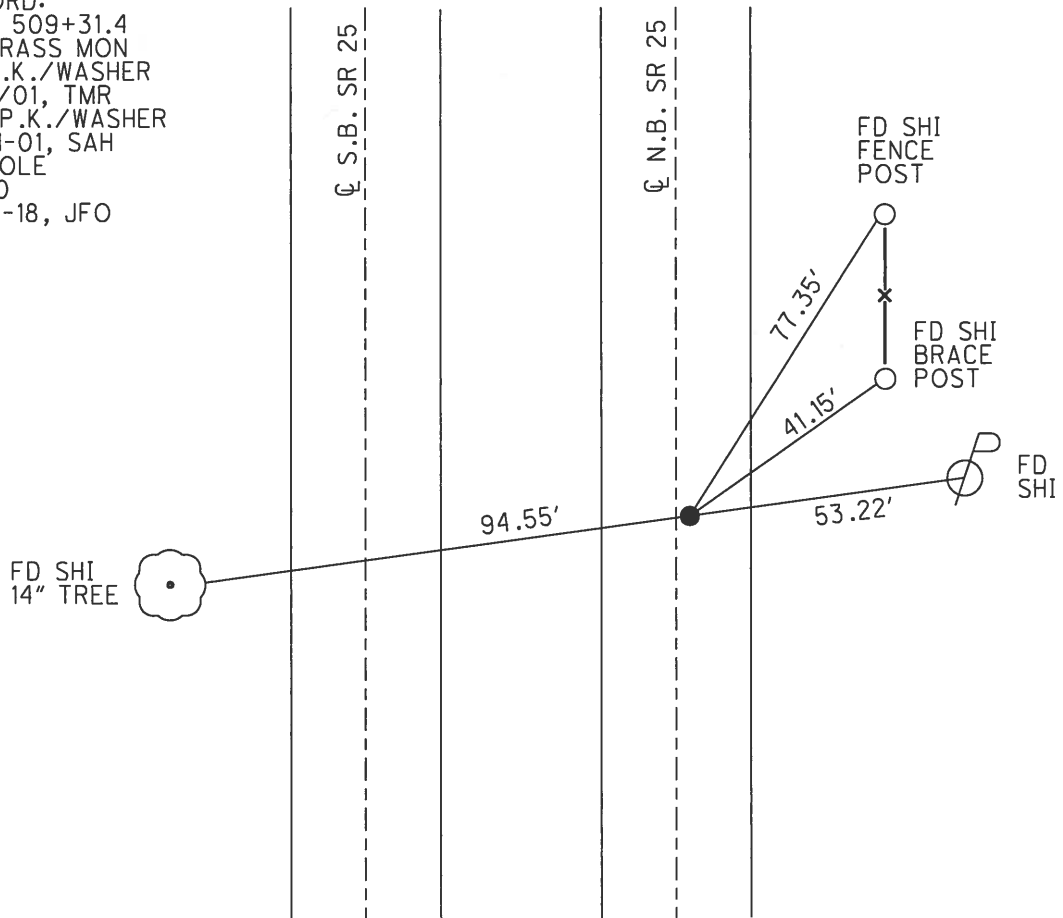
STATION: 266+92

HORZ. DATUM: NAD83(2011) GEOID: NAVD88 2012A

GRID: NORTHING: 598910.358 EASTING: 1652461.264



RECORD:
 STA. 509+31.4
 FD BRASS MON
 FD P.K./WASHER
 4/12/01, TMR
 SET P.K./WASHER
 10-31-01, SAH
 FD HOLE
 REF10
 5-30-18, JFO



O.D.O.T. DISTRICT 2 SURVEY OFFICE

PERSONNEL

REFERENCE NO. 9-10

SHEET 12 OF 23

NOTES Huss

H.C. Rousos

R.C. Dan Dusen

DATE 4-12-01

WEATHER Pt Cldy-Windy

TEMP. +72°F

ROUTE SR-25

COUNTY Wood

TOWNSHIP Liberty

SECTION 13

T 4 N R 10 E

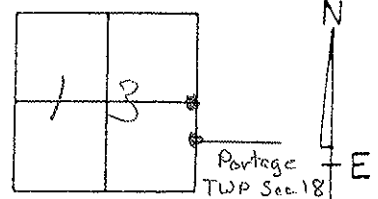
TYPE MONUMENT (A) PK/W (B) PK/W

(ON SURFACE) - ~~Below~~ Surface

~~11.3~~ - (E) PAV'T. - RIGHT (A) 0.3' (B) 0.2'

11.3 TO LT EDGE PAVEMENT

S.L.M. (A) 264+67 (B) 266+92



Record:

(A) BRASS MONUMENT
Sta. 507+07.0

(B) BRASS MONUMENT
Sta. 509+31.4

Fd W/Ski
E/S 14"

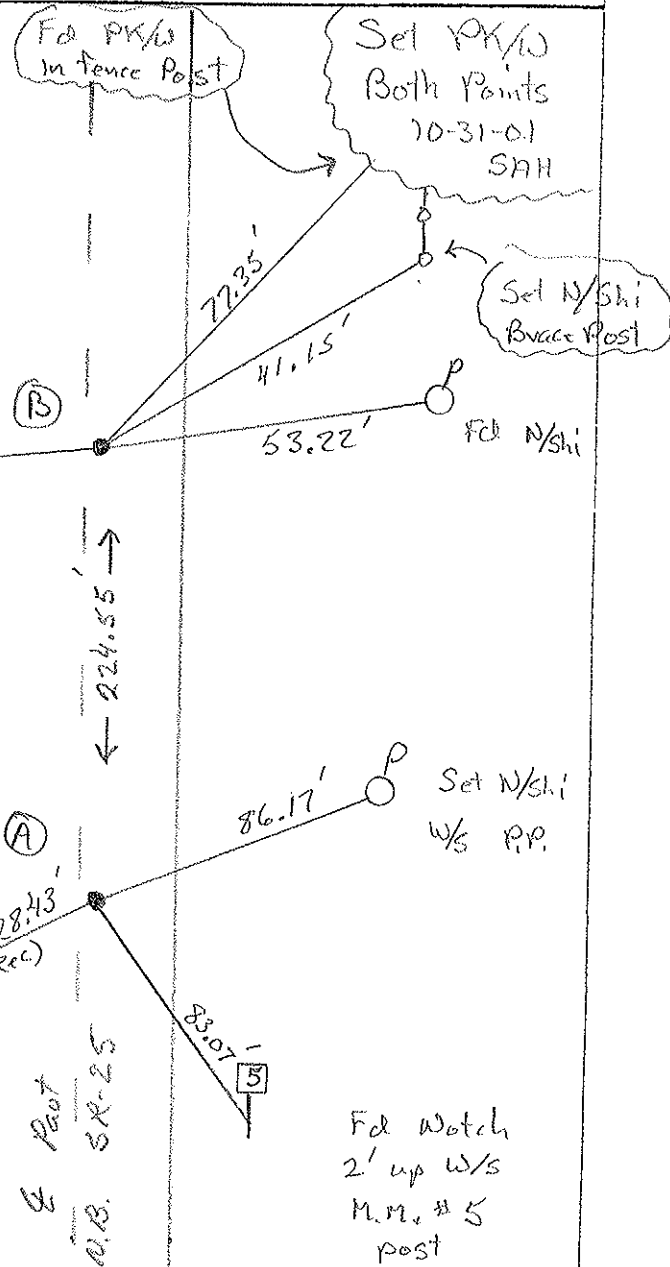
94.55'

Post
SR-25
S.B.

Fd 4" top
South side
C.B.

Post
SR-25
N.B.

Fd Watch
2' up w/s
M.M. #5
post



O.D.O.T. DISTRICT 2 SURVEY OFFICE

PERSONNEL

REFERENCE NO. 9-10

SHEET 12 OF 23

NOTES Huss

H.C. Rousos

R.C. VanDusen

DATE 4-12-01

WEATHER Pt Cldy-Windy

TEMP. +72°F

ROUTE SR-25

COUNTY Wood

TOWNSHIP Liberty

SECTION 13

T 4 N R 10 E

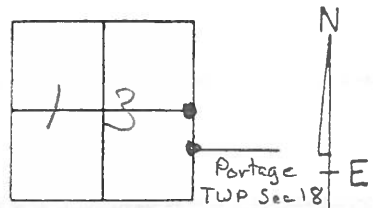
TYPE MONUMENT (A) PK/W (B) PK/W

ON SURFACE - ~~PAV'T.~~ Surface

~~PAV'T.~~ - (A) PAV'T. - RIGHT (B) 0.2'

11.3 TO LT EDGE PAVEMENT

S.L.M. (A) 264+67 (B) 266+92



Record:

(A) BRASS MONUMENT
Sta. 507+07.0

(B) BRASS MONUMENT
Sta. 509+31.4

Fd N/shi
E/S 14"

94.55'

Pav't
SR-25

E/S
SR-25

Fd 7" top
South Side
C.B.

(A)

28.43'
(Rec)

Pav't
SR-25
N.B.

83.07'

Fd Watch
2' up w/s
M.M. # 5
post

(B)

224.55'

Fd PK/W
in fence Post

Set PK/W
Both Points
10-31-01
SAH

Set N/shi
Brace Post

77.35'

41.15'

53.22'

Fd N/shi

86.17'

Set N/shi
w/s P.P.

O.D.O.T. DISTRICT 2 SURVEY OFFICE

PERSONNEL

REFERENCE NO. 9910

SHEET 12 OF 23

NOTES HOFFMAN

H.C. LOEHRKE

R.C. BARAHISEL

DATE 3-26-91

WEATHER OVERCAST

TEMP. 55°

ROUTE SR 25

COUNTY WOOD

TOWNSHIP LIBERTY

SECTION 13

T 4 N R 10 E

"A" "B"

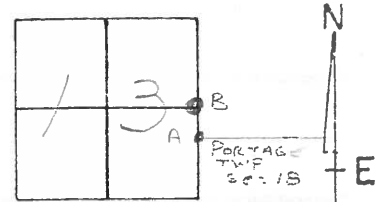
TYPE MONUMENT P.K./washer - P.K./washer

ON SURFACE - BELOW YES YES

LEFT - C PAVT. - RIGHT 0.3 - 0.2

11.3 TO LT EDGE PAVEMENT

S.L.M. "A" = 204+67



SET P.K.'S & WASHERS
6-6-91
mib

RECORD: POINT "A"
BRASS MON. STA. 507+07.0
POINT "B"
BRASS MON. STA. 509+31.4

Set Shi
E/S 14"

94.55

"B"

53.15

Fd Shi SW/S

224.55

85.29

Fd Shi SW/S

28.43

Fd "T" TOP
SOUTH SIDE
of C.B.

83.07

CUT NOTCH 2' UP
ON POST of MILEMARKET
5

PAVT S.B.L.

SR 25

PAVT N.B.L.

S.R. 25

County Wood S.R.-U.S. 25

Township Liberty

Section 13

T4N, R10E

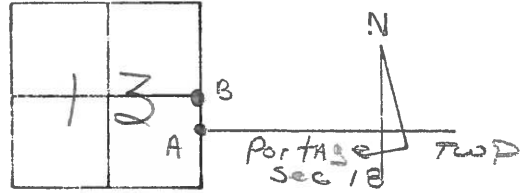
Personnel Hoffman
Householder

#9 & 10

Date 6-10-81

Weather clear

Temp. +78°



Pt. "A" Fd. BRASS MON @ SURFACE STA 507+07.0 - REC. S.L.M. 265+40
 Pt. "B" Fd. BRASS MON @ SURFACE STA 509+31.4 - REC. S.L.M. 267+64

SET P.K./WASHER
@ EACH POINT
11/9/82
S.W.H.

SET NEW SHINER
N/S END POST

34
106.30



CUT "T" TOP
CTR. S. SIDE
C.R.

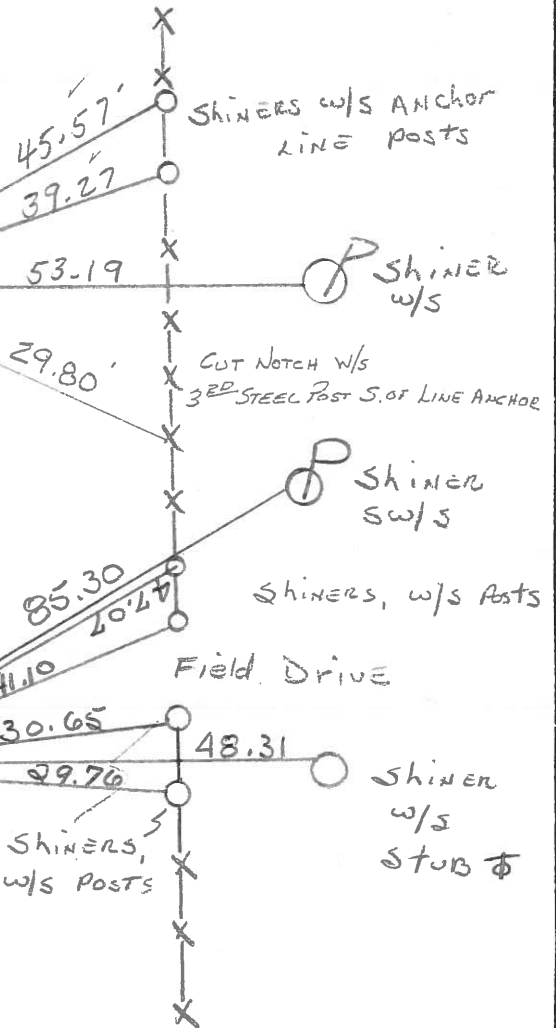
W.E.P.

LANES
"B"
North Bound

PAV. U.S. 25
"A"

F.E.P.

80' ±



WOOD 25
5 mile MARKER

County WOOD ^{U.S.} S.R. 25

Date 7-6-71

Township LIBERTY

Weather CLEAR

Section 13

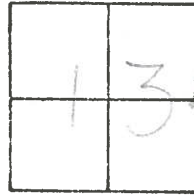
Temp. 82°

T4N, R10E

Personnel BURNSIDE

SMITH

BOWERS



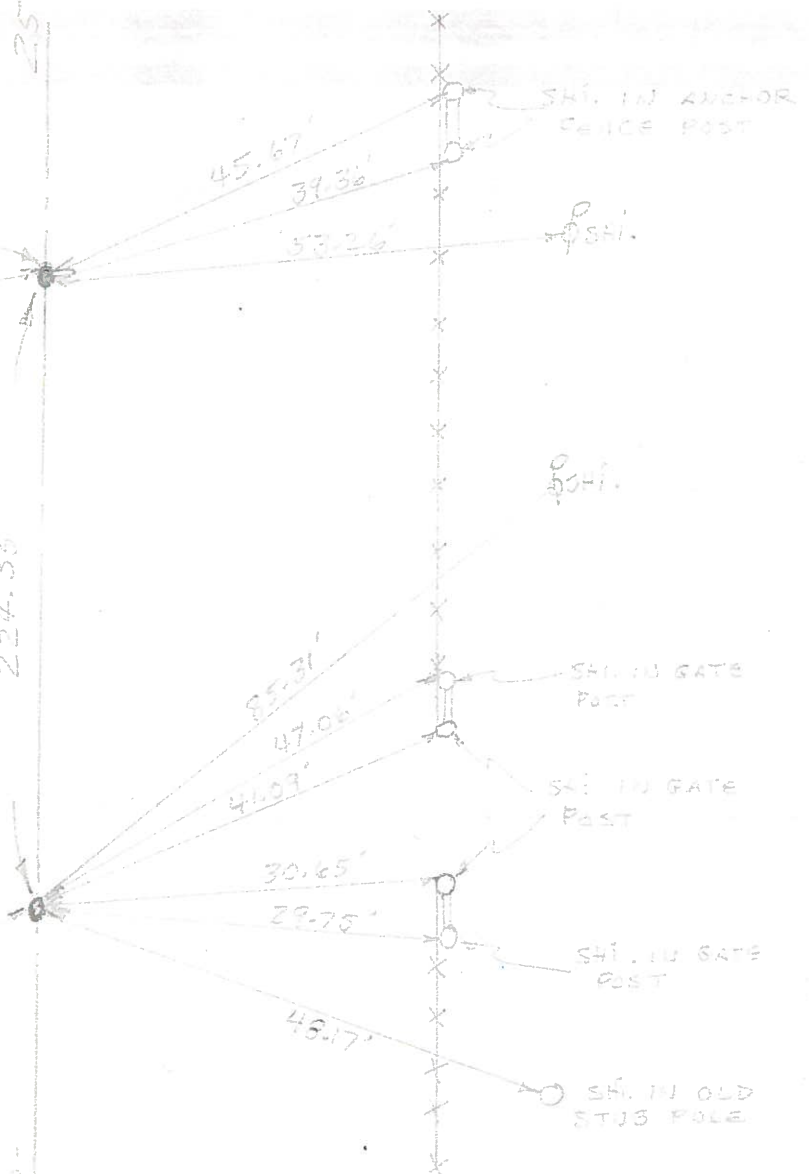
#9 - #10

BRASS MON.
507+31.4
E 1/4 Post Sec. 13
LIBERTY TWP.



25
224.35
U.S.

W. 1/4 Post Sec. 18
PORTAGE TWP.
SAD. CO.
BRASS MON.
STA. 507+07.0



PERSONNEL TITLE PERSONNEL TITLE

COUNTY Wood DATE 4-5-60

U.S. #25 WEATHER

SEC. TEMP.

DESCRIPTION LEFT CENTER LINE RIGHT JOB NO.

Sta. 507+07.0 W. 1/4 post sec. 18 Portage Twp. Brass plate - Could not raise Mobora Mon.			Shiner in Anchor Post N.N.E. 47.0 Shiner in T.P. W.N.W. 29.00 Shiner in P.P. N.N.E. 85.38 Shiner in 8" oak S.E. 95.76 W. edge post. 7.85 E. edge 12.15 Shiner in End Post N.N.E. 41.07 Shiner in End Post N.E. 30.63 Shiner in Anchor Post E. 29.71
(9) #237			
Sta. 509+31.4 E. 1/4 post sec. 13 Liberty Twp. Brass plate with top - (Could not plate gone (raise)			Shiner in T.P. N.W. 58.28 Shiner in T.P. S.S.W. 89.15 Shiner in P.P. N.E. 53.30 59.34 Iron cor. post S.W. 35.45 W. edge post. 8.55' E. edge 11.35' Shiner Brace Post N.N.E. 45.75 Shiner Brace Post N.E. 39.43 "X" E. Edge S. Bound lane (west) 44.10' "X" E. Edge S. Bound lane (N. west) 54.37'
(10) #238			
Sta. 533+62.85 S.W. cor. sec. 7 Portage Twp. <u>Greensburg Pike East.</u> Brass plate in lot post.			Shiner in T.P. E.S.E. 66.74 Shiner in P.P. S.S.E. 94.22 Shiner in T.P. W. 38.16 Shiner in End Post N.N.E. 44.74 Shiner in P. Pole N.E. 93.10 Shiner in End Post E.S.E. 50.93 Shiner in T. Pole S.E. 66.94
(11) #239			
Sta. 535+91.8 S.E. cor. sec. 12 Liberty Twp. <u>Greensburg Pike West.</u> Brass plate in E post.			Shiner in P.P. N.N.E. 94.60 Shiner in T.P. N.W. 45.00 Shiner in T.P. W.N.W. 67.13 conc. E/W mon. S.W. 57.29 "X" in conc. curb N.W. 38.3 "X" in conc. curb S.W. 34.14
(12) #240			