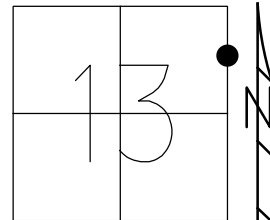


O.D.O.T. DISTRICT 2 SURVEY OFFICE (USE ONLY)

PERSONNEL _____ REFERENCE NO. 29 SHEET 35 OF 35
 NOTES AUBLE DATE 6/11/92 ROUTE SR 25
 H.C. NIESE WEATHER BREEZY COUNTY WOOD
 R.C. WHITAKER TEMP. 58° TOWNSHIP PLAIN
 DWG BY RHOADES PID 110037 SECTION 13
 T 5 N R 10 E

TYPE MONUMENT MONBOX W/1" IPIN
 ON SURFACE - ~~BELOW~~ ON
 OFFSET CL PAVEMENT ON LT : RT
- TO - EDGE PAVEMENT
 STATION: 614+23.98

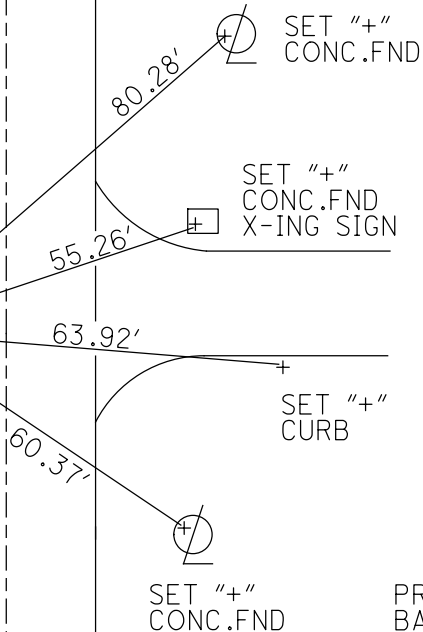


HORZ. DATUM: NAD83 2011 GEOID: NAVD88 2018
 GRID: NORTHING: 632402.472 EASTING: 1652832.145

RECORD:
 STA. 602+57
 FD COPPERWELD MON.
 1 1/2" DOWN
 6/11/92, MB
 SET P.K./WASHER
 7/14/92, MB
 FD MONBOX
 W/ 1" IPIN
 REF29
 12/22/20, JFO

CL VAN CAMP RD

M



CL SB SR 25

CL NB SR 25

PREMIER BANK

O.D.O.T. DISTRICT 2 SURVEY OFFICE (USE ONLY)

PERSONNEL

REFERENCE NO. 28

SHEET 35 OF 35

NOTES BARNHISEL

DATE 6/11/92

ROUTE US 25

H.C. VAN DUSEN

WEATHER SUNNY

COUNTY WOOD

R.C. BURNETT

TEMP. 69°

TOWNSHIP PLAIN

SECTION 13

DWG BY RHOADES

PID _____

T 5 N R 10 E

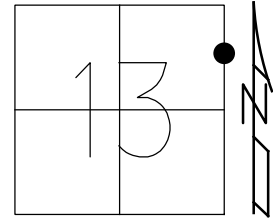
TYPE MONUMENT COPPERWELD MON.

~~ON SURFACE~~ - BELOW 1 1/2"

OFFSET CL PAVEMENT 4.6' LT : ~~RT~~

- TO - EDGE PAVEMENT

STATION: 602+57



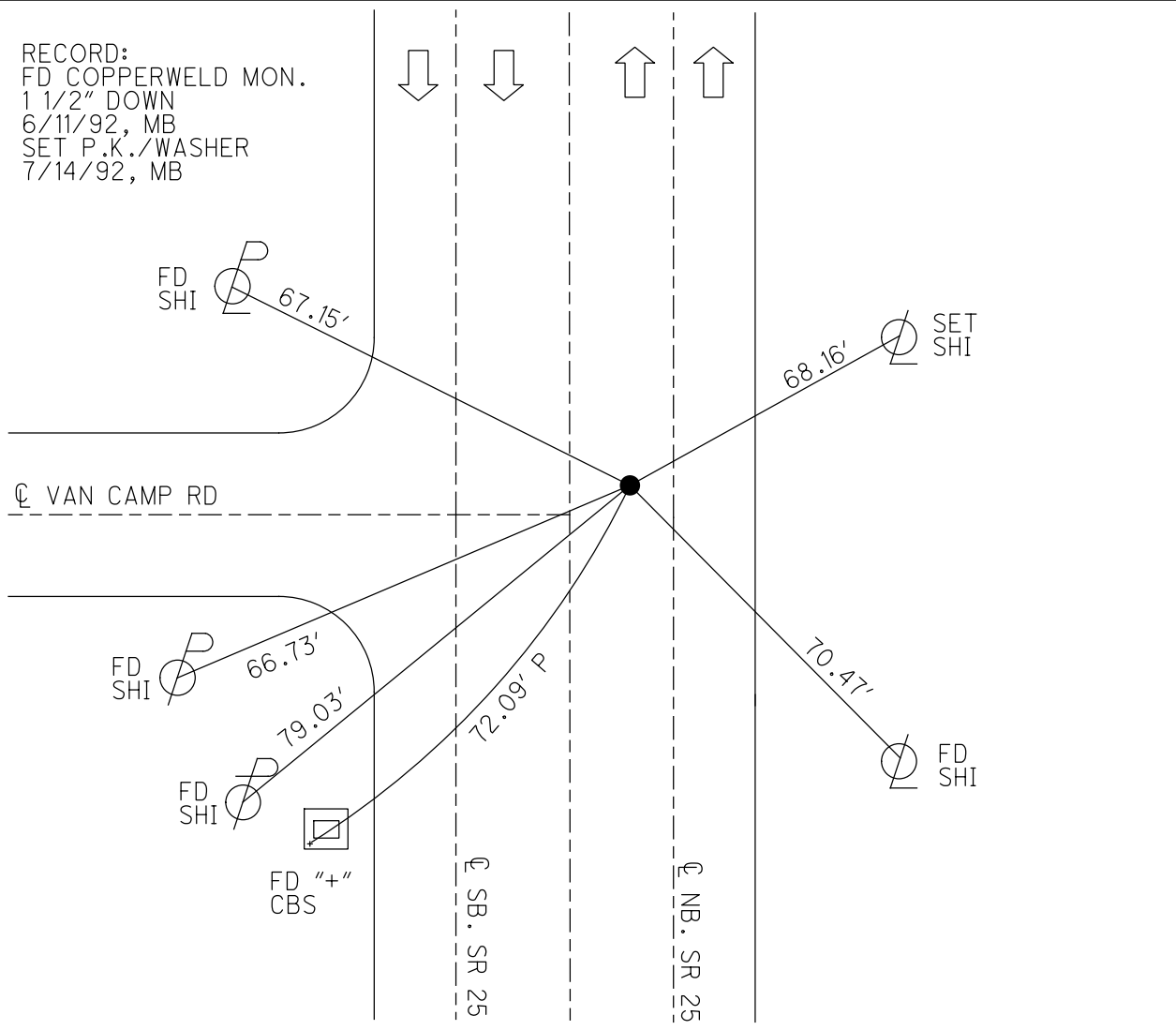
HORZ. DATUM: _____

GEOID: _____

GRID: NORTHING: _____

EASTING: _____

RECORD:
FD COPPERWELD MON.
1 1/2" DOWN
6/11/92, MB
SET P.K./WASHER
7/14/92, MB



O.D.O.T. DISTRICT 2 SURVEY OFFICE

PERSONNEL

REFERENCE NO. 29

SHEET 22 OF 22

NOTES BARNHISEL

H.C. VAN DUSEN

R.C. BURNETT

DATE 6-11-92

WEATHER Sunny

TEMP. +69°

ROUTE U.S. 25

COUNTY Woods

TOWNSHIP Plain

SECTION 13

T 5 N R 10 E

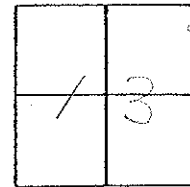
TYPE MONUMENT Copperweld Mon.

ON SURFACE - BELOW 1 1/2"

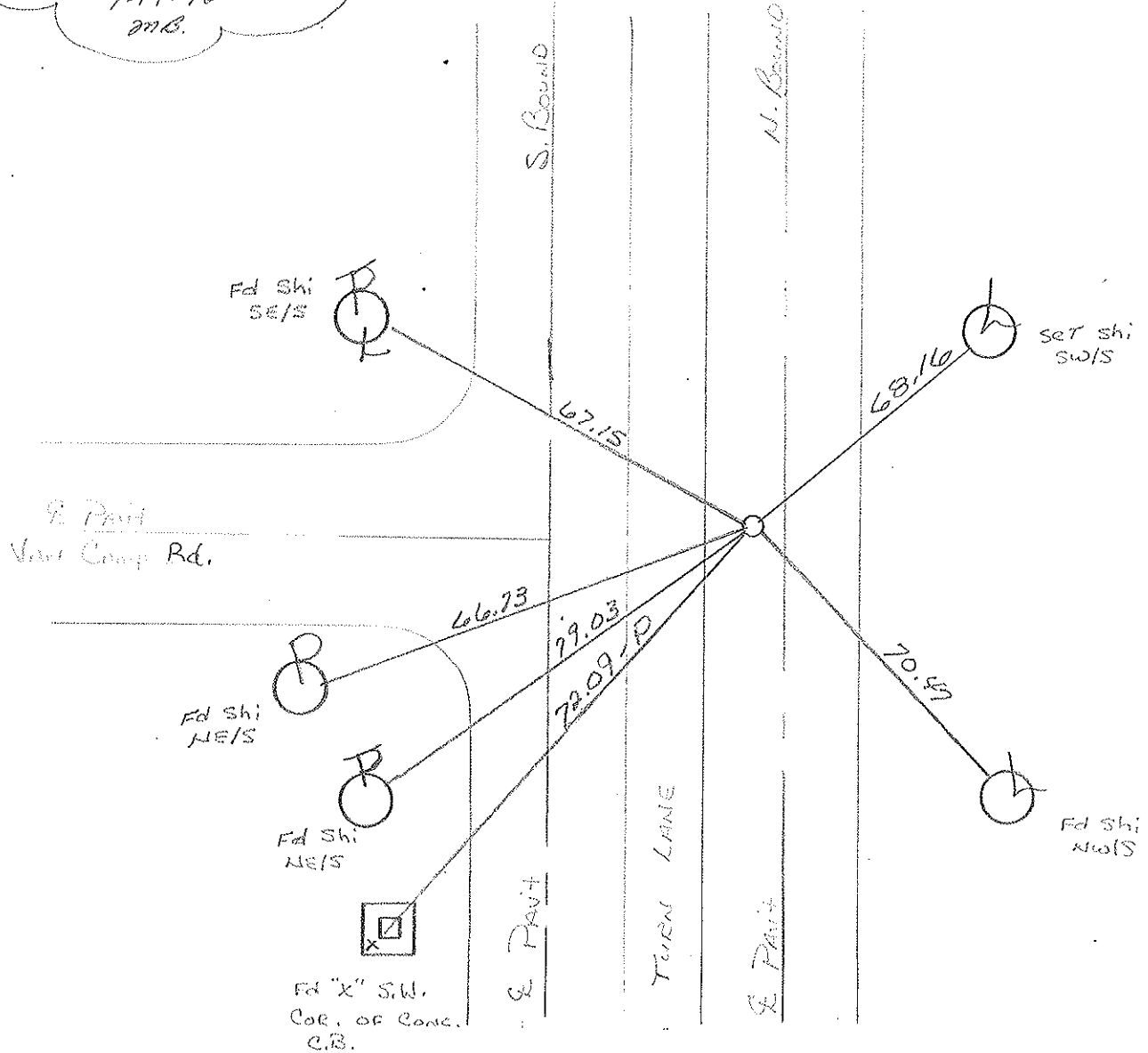
LEFT - ℄ PAV'T. - RIGHT 4.6' of ℄ MBL

TO EDGE PAVEMENT 1.5' N. of ℄ Rd. WEST

S.L.M. 602+57 8.0' E. of ℄ of TURN LANE



RESET P.K. & WASHER
 7-14-90
 m.B.



Q.D.O.T. DISTRICT 2 SURVEY OFFICE

SHEET _____ OF _____

County WOOD S.R. 25

Date 9-4-85

Township PLAIN

Weather CLEAR

Section 13

Temp. 80

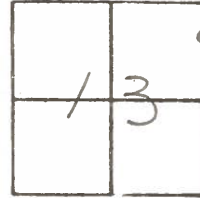
TSN, R/OE

Personnel HOFFMAN

BARNHISEL H.C.

FLOURNOY R.C.

#29



Fd COPPERWELD mon. 1 1/2" Below Surface

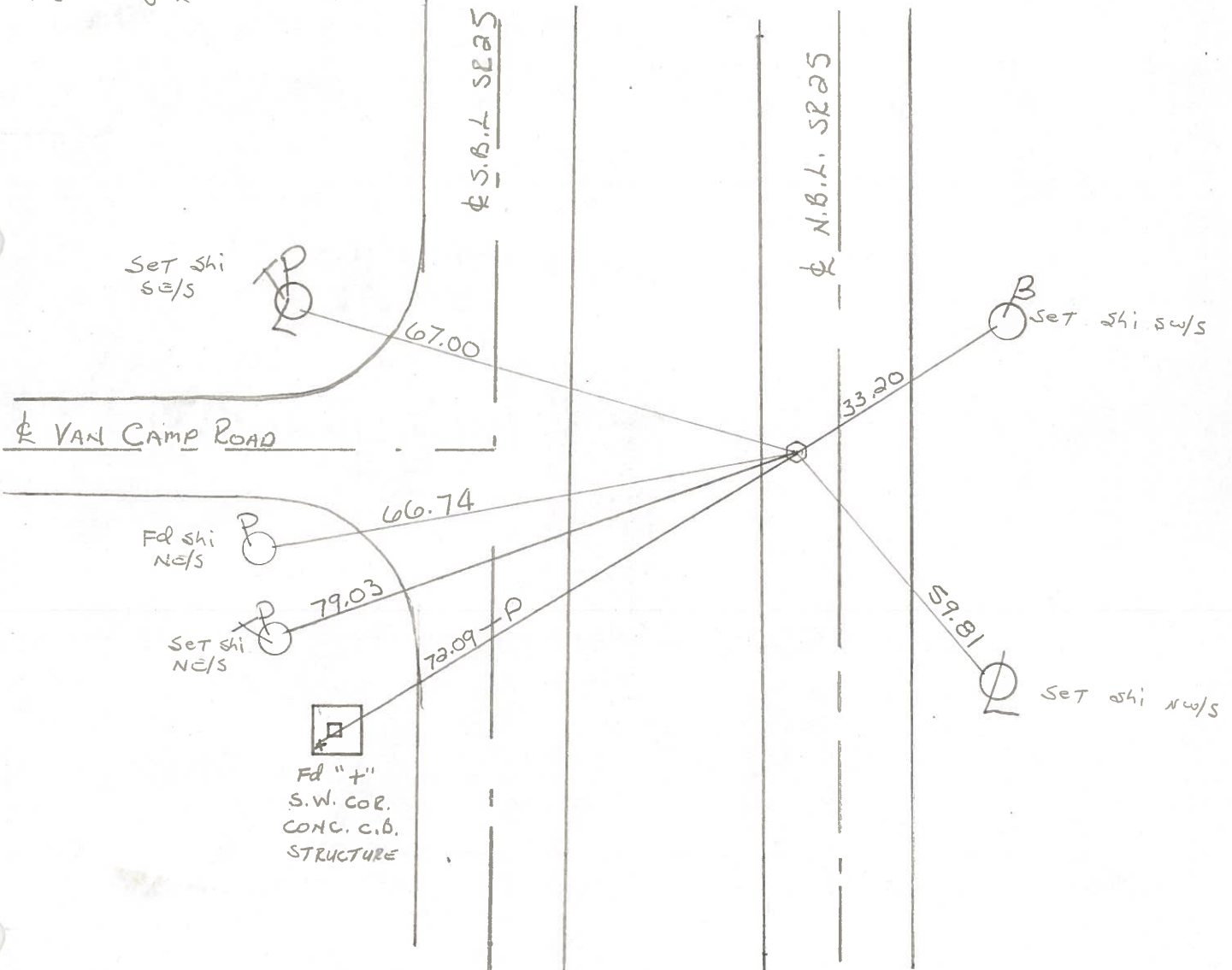
SLM 603+00 ±

4.6' LT. of & PAWT N.B.L.

NOT COVERED THIS PROJECT.

8.0' LT. TO & MEDIAN

1.0' N. of & PAWT VAN CAMP Rd.



ODOT. DISTRICT 2 SURVEY OFFICE

SHEET _____ OF _____

County Wood ^{U.S.} S.R. 25

Date 7-7-71

Township PLAIN

Weather CLEAR

Section 13

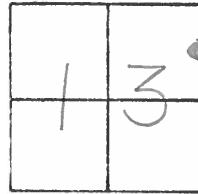
Temp. 88°

T5N, R1E

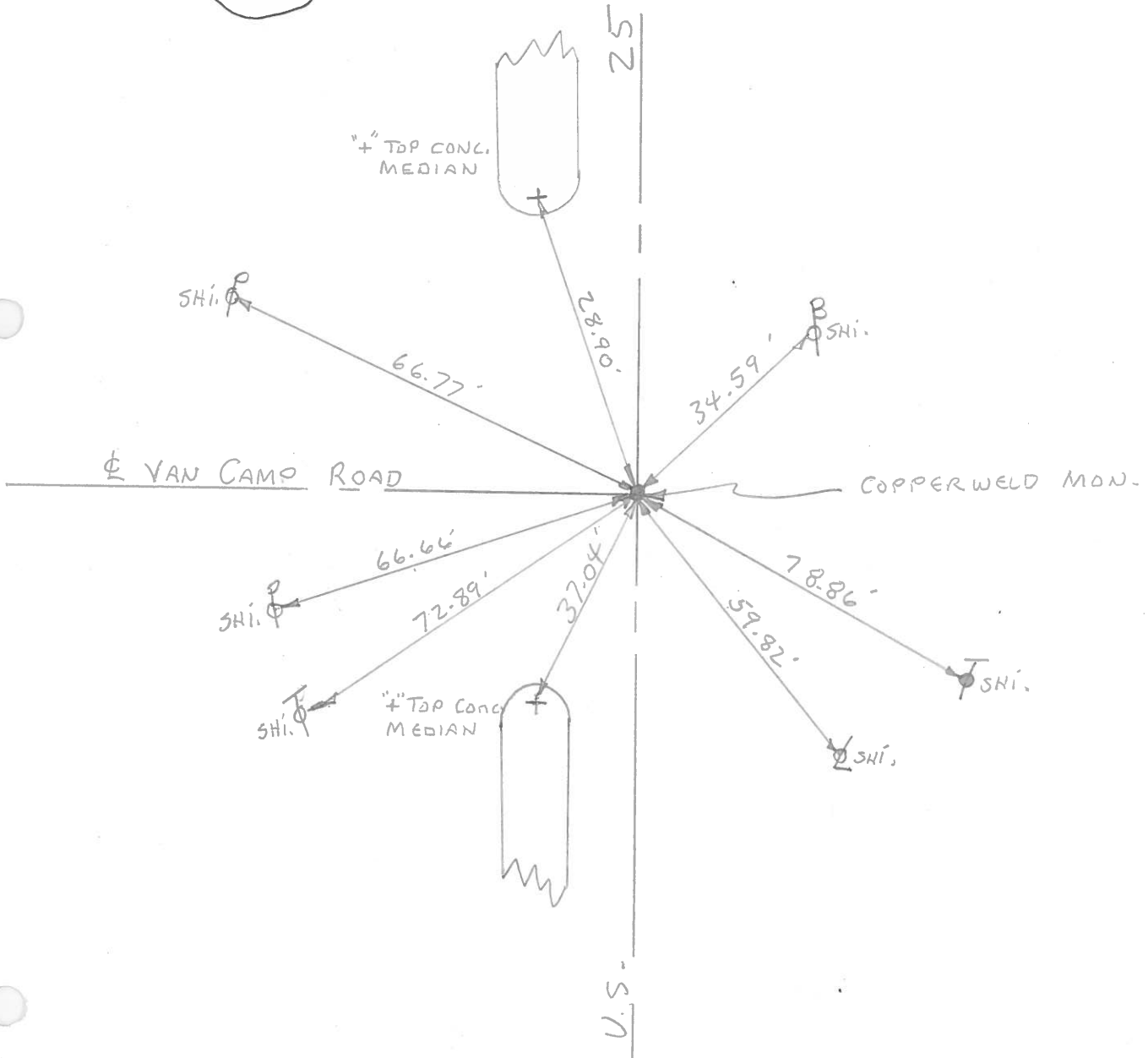
Personnel BURNSIDE

SMITH

BOWERS



#29



PERSONNEL _____ TITLE _____ PERSONNEL _____ TITLE _____
 COUNTY Wood DATE 3-23-60
 S. R. U.S. #25 WEATHER 9-63
 SEC. _____ TEMP. _____
 DESCRIPTION (Moborg Mon. (Raised & Greased)) JOB NO. _____

29

New-Bowling Greens W. Corp. line

LEFT	CENTER LINE	RIGHT
T-35/63	Moborg Mon.	"X" Conc. med. strip S.W. 45.09
Sta. 40+69.51	3-23-60	Shiner in T.P. N.W. 98.30' 98.6'
About 80 Rods N. of E 1/4	Raised Brass Mon.	Shiner in P.P. W. 81.31' 81.24'
past sec. 13 Plain twp.		Shiner in T.P. S.W. 77.86' 78.00'
E.R. spike Van Camp Rd. West.		Shiner in T. Pole S.E. 84.87'
New-Bowling Greens W. Corp. line		"X" Conc. med. strip N.W. 21.29'
#254		Shi. in Pav't West 10.86'
Sta. 52+73.27		"X" Conc. Med. strip N.W. 45.4'
Cor. stone 33' N. of N.W.		Shiner in 34" Walnut S.E. 53.0'
cor. sec. 18 Center twp.		Shiner in 20" Apple N.E. 81.1'
Brass mon	Newton Rd.	Shiner in T.P. 63.2'
#255		Shiner in 8" twin Elm W. 66.90'
Sta. 82+90.35		Shiner cor. Post N.E. 67.45'
E.R. Spike & R/W Co.		Shiner P. Pole S.E. 52.90'
Ed. W. No Angle		"X" Conc. Med. strip S.W. 23.29'
Set new mon.		Shi. in Pav't west 11.86'
#256	Bishop Rd.	Shiner in P.P. N.W. 80.2'
Sta. 92+14.00		Shiner in T.P. W.S.W. 60.00'
& Ed. E. E.R. Spike		Shiner in Ed. sign S.W. 85.40'
BRASS Mon.		Shiner in P. Pole N.E. 55.30'
#257	Nims Rd. E.	"X" Conc. Med. strip N.W. 46.08'
Sta. 106+92.75		"X" Conc. Med. strip S.W. 25.90'
S.E. cor. sec. 1 Plain Twp.		"X" Conc. Med. strip N.W. 41.80'
Set new mon.		N.W. cor. Gas. Sta. S.E. 62.32' 62.00'
#258		N.pt. W. pump island 57.70'
Sta. 106+92.75		Shiner in P.P. N.E. 38.00'
S.E. cor. sec. 1 Plain Twp.		Shiner T. Pole N.E. 66.10'
Set new mon.		Shiner P. Pole S.E. 52.70'
#259		"X" Conc. Med. strip S.W. 42.00'
Sta. 106+92.75		Shiner in P.P. S.E. 35.40'
S.E. cor. sec. 1 Plain Twp.		Shiner in T.P. S.W. 74.20'
Set new mon.		Shiner in cor. post W. 59.18'
#260		"X" Conc. Med. strip N.W. 20.50'
Sta. 106+92.75		"X" Conc. - - W. 7.90'
S.E. cor. sec. 1 Plain Twp.		"X" Conc. - - S.W. 21.30'
Set new mon.		