

O.D.O.T. DISTRICT 2 SURVEY OFFICE (USE ONLY)

PERSONNEL

REFERENCE NO. 31

SHEET 3 OF 19

NOTES AUBLE

DATE 5/24/22

ROUTE SR 25

H.C. NIESE

WEATHER CLEAR

COUNTY WOOD

R.C. WHITAKER

TEMP. 55°

TOWNSHIP PLAIN

SECTION 12

DWG BY RHOADES PID 110037

T 5 N R 10 E

TYPE MONUMENT MAG NAIL

ON SURFACE - BELOW ON

OFFSET \varnothing PAVEMENT - LT : RT

- TO - EDGE PAVEMENT

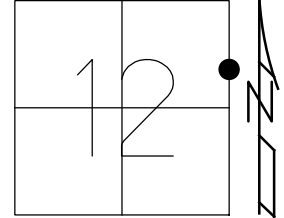
STATION: 652+57.63

HORZ.DATUM: NAD83 2011

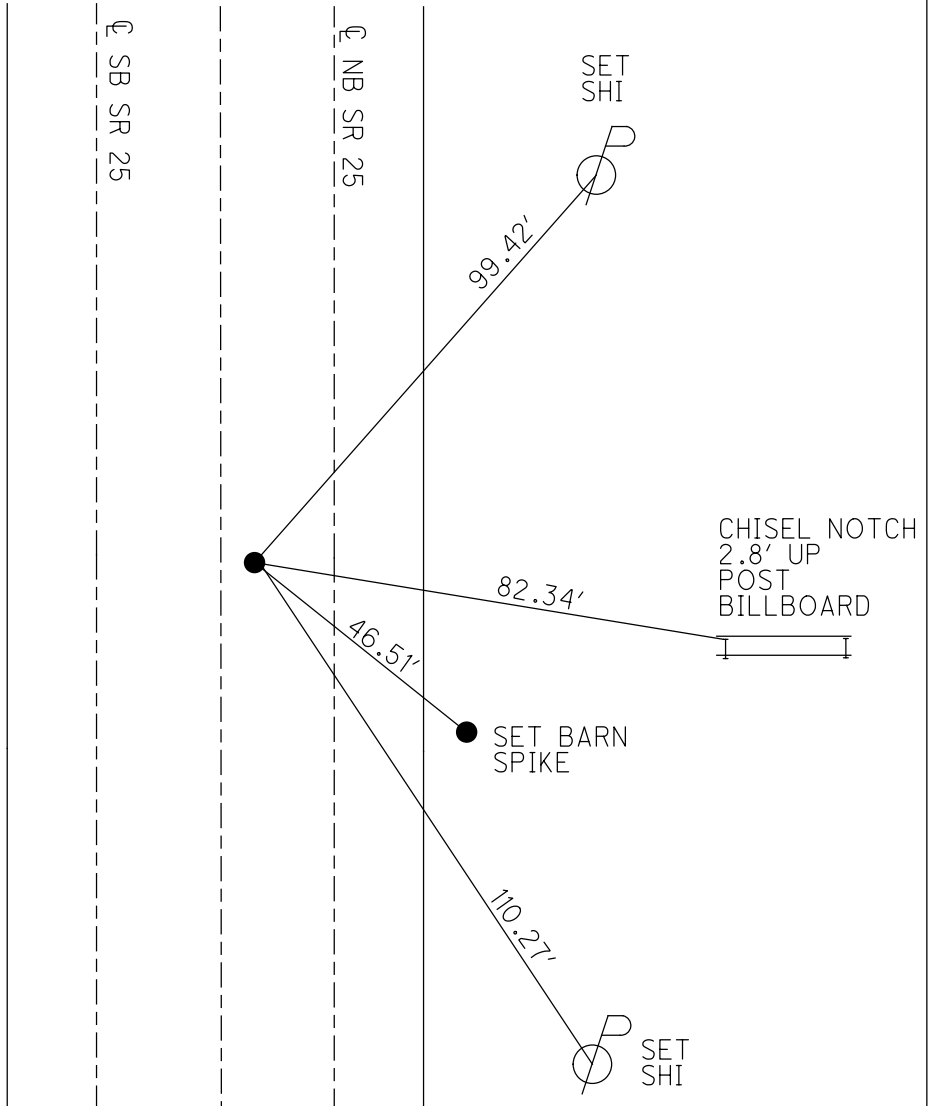
GEOID: NAVD88 2018

GRID: NORTHING: 636236.096

EASTING: 1652854.236



RECORD:
 STA.644+98
 FD P.K.NAIL
 5/1/09, DCH
 FD MAG NAIL
 REF31
 12/22/20, JFO
 SET MAG/WASHER
 9/8/22, TDN



O.D.O.T. DISTRICT 2 SURVEY OFFICE

PERSONNEL _____

REFERENCE NO. 31A

SHEET 3 OF 18

NOTES HOMAN

DATE 5-1-09

ROUTE US 25

H.C. ROUSOS

WEATHER CLEAR

COUNTY WOOD

R.C. HOMAN

TEMP. 65°

TOWNSHIP PLAIN

SECTION 12

T 5 S R 10 E

TYPE MONUMENT PK NAIL

ON SURFACE - ~~BELOW~~ YES

LEFT - Q PAV'T - ~~RIGHT~~ 1.0' of N.B.L.

TO EDGE PAVEMENT

S.L.M. _____

GPS Northing: 636236.1309

Easting: 1652854.2449

