

O.D.O.T. DISTRICT 2 SURVEY OFFICE (USE ONLY)

PERSONNEL

REFERENCE NO. 32

SHEET 6 OF 19

NOTES WHITAKER

DATE 5/25/22

ROUTE SR 25

H.C. NIESE

WEATHER CLOUDY

COUNTY WOOD

R.C. WHITAKER

TEMP. 60°

TOWNSHIP PLAIN

SECTION 12

DWG BY RHOADES

PID 110037

T 5 N R 10 E

TYPE MONUMENT MAG/WASHER

ON SURFACE - ~~BELOW~~ ON

OFFSET C PAVEMENT 1.7', NB C LT : ~~RT~~

- TO - EDGE PAVEMENT

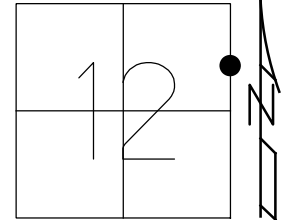
STATION: 665+71.19

HORIZ.DATUM: NAD83 2011

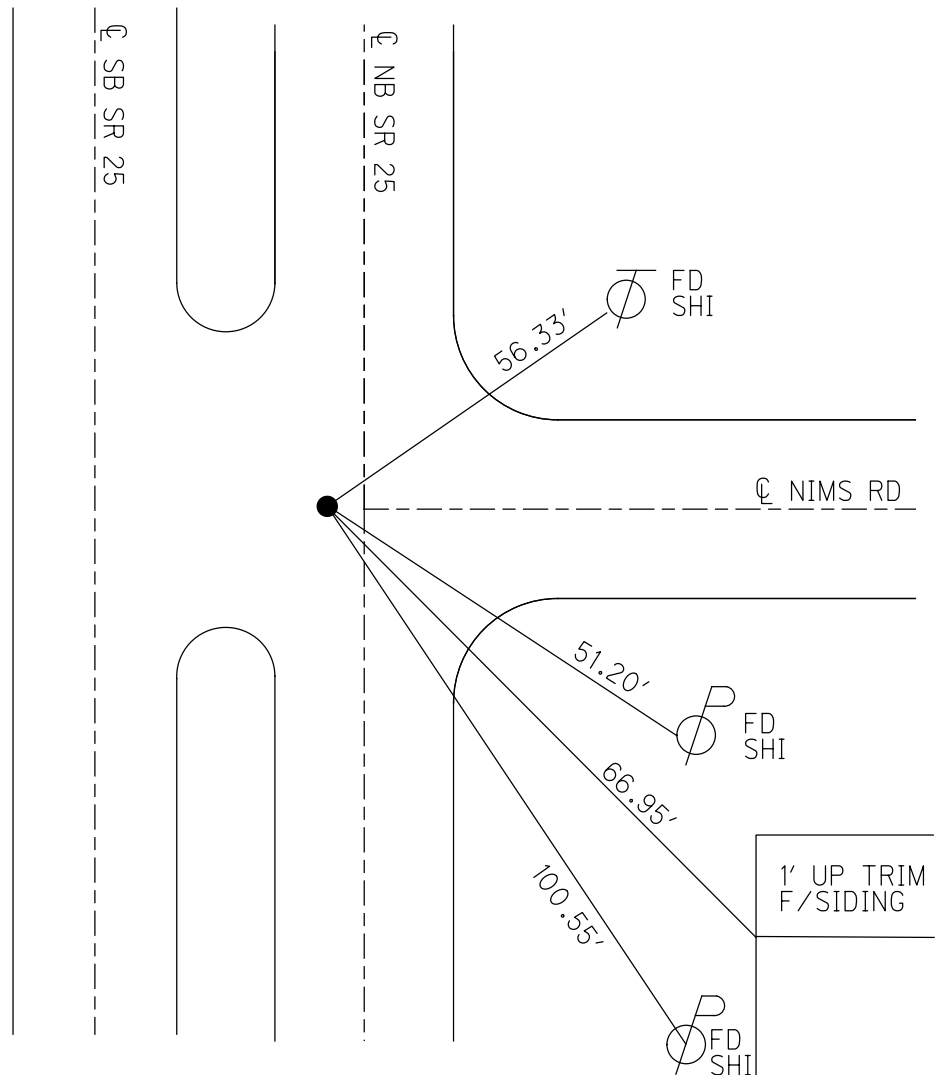
GEOID: NAVD88 2018

GRID: NORTHING: 637549.586

EASTING: 1652862.135



RECORD:
 STA. 92+14.00
 FD BRASS MON
 9-4-85, HOFFMAN
 SET P.K./WASHER
 9-30-94, MB
 SET MAG/WASHER
 11-02-09, DCH
 SET MAG/WASHER
 REF 32
 12/22/20, JFO
 SET MAG/WASHER
 9/8/22, TDN



O.D.O.T. DISTRICT 2 SURVEY OFFICE

PERSONNEL

REFERENCE NO. 32

SHEET 5 OF 18

NOTES HOMAN

DATE 5-1-09

ROUTE US 25

H.C. ROUSOS

WEATHER CLOUDY

COUNTY WOOD

R.C. HOMAN

TEMP. 65°

TOWNSHIP PLAIN

SECTION 12

T 5 S R 10 E

TYPE MONUMENT PK NAIL

ON SURFACE - ~~BELOW~~ YES

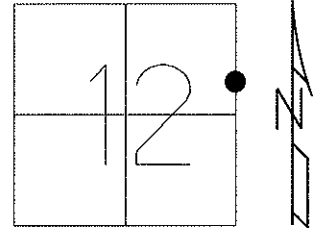
LEFT - CL PAV'T - ~~RIGHT~~ 2.5' N.B.L.

11.1 TO CL ~~EDGE PAVEMENT~~ MEDIAN

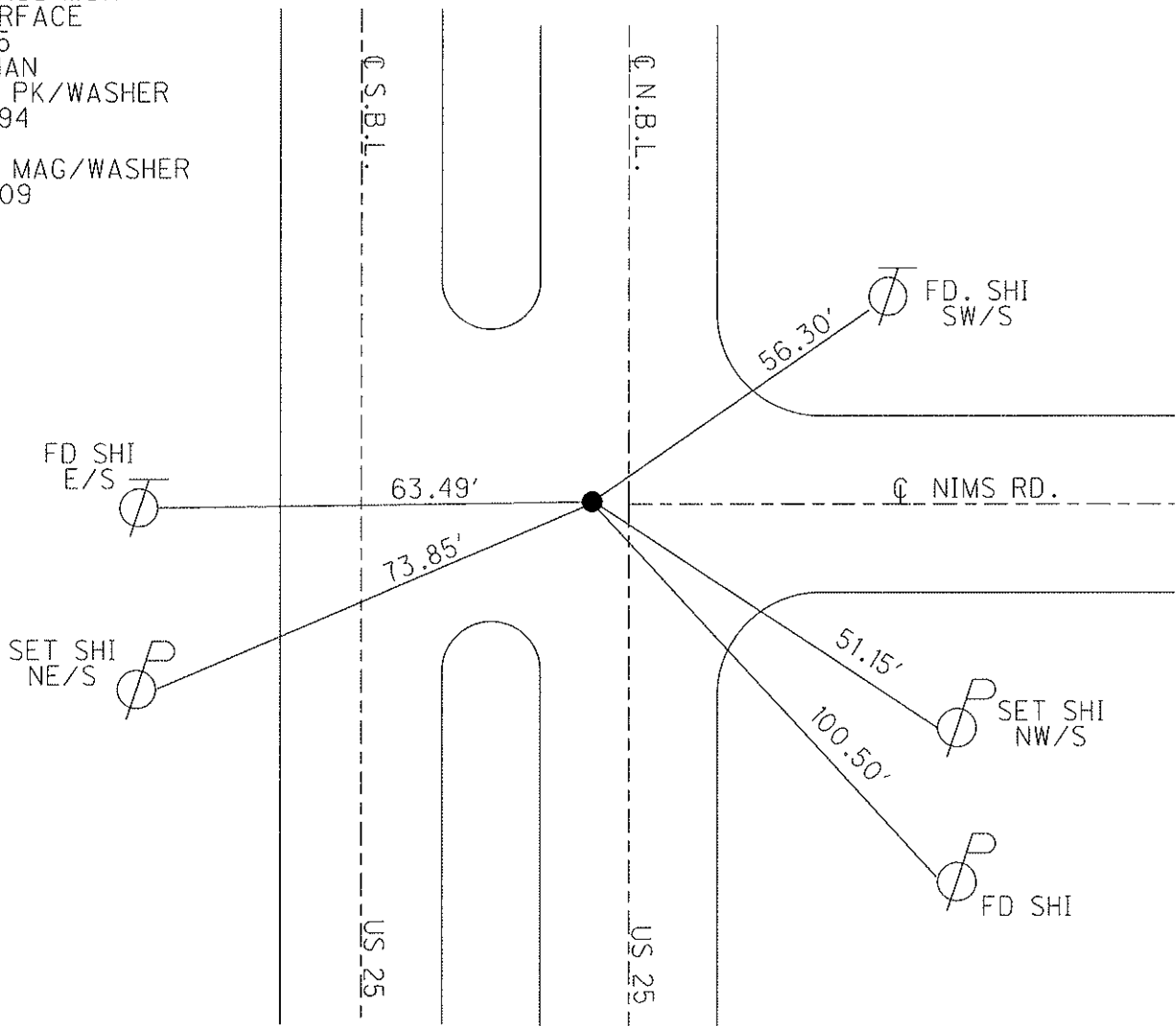
S.L.M. 654.18 ON CL OF NIMS RD.

GPS Northing: 637549.618

Easting: 1652862.036



RECORD: 92+14.00
 FD BRASS MON
 AT SURFACE
 9-4-85
 HOFFMAN
 RESET PK/WASHER
 9-30-94
 MB
 RESET MAG/WASHER
 11-02-09
 DCH



O.D.O.T. DISTRICT 2 SURVEY OFFICE

PERSONNEL

REFERENCE NO. 32

SHEET 3 OF 12

NOTES BARNHISEL

H.C. CORDES

DATE 8-1-94

ROUTE U.S. 25

R.C. Hermler

WEATHER Clear

COUNTY WOOD

VAN DUSEN

TEMP. +75°

TOWNSHIP PLAIN

SECTION 12

T 5 N R 10 E

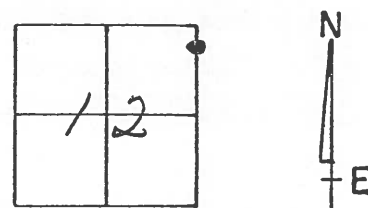
TYPE MONUMENT Sm RR Spk

ON SURFACE - ~~BELOW~~ yes

LEFT-~~E~~ PAV'T. - ~~RIGHT~~ 2.5' N.B.L.

U.I. TO E ~~EDGE PAVEMENT~~ median

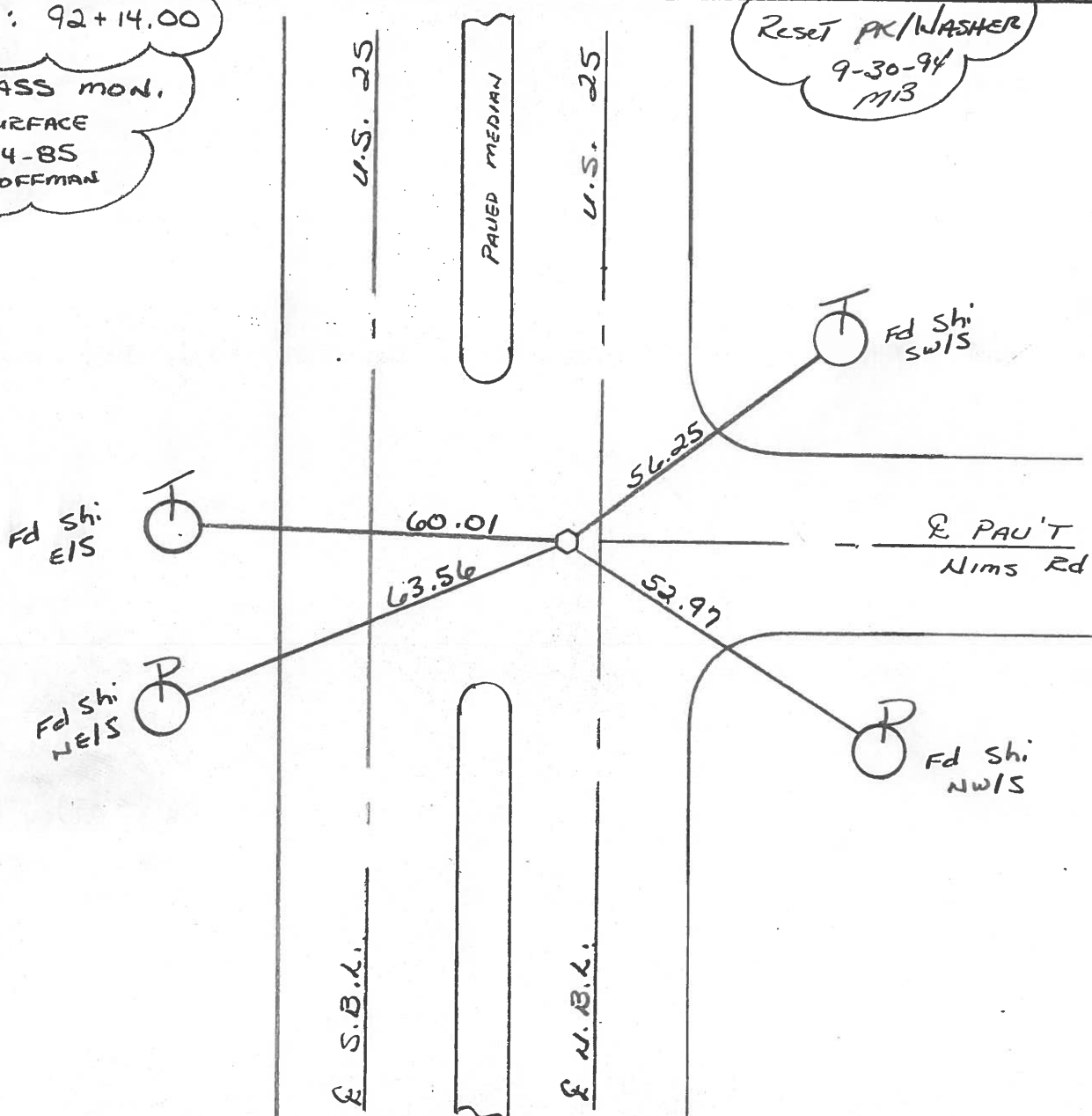
S.L.M. 654+18 ON E OF Nims Rd



Record: 92+14.00

Fd BEASS mon.
at SURFACE
9-4-85
HOFFMAN

Reset PK/WASHER
9-30-94
MIB



Q.D.O.T. DISTRICT 2 SURVEY OFFICE

SHEET _____ OF _____

County Wood S.R. 25

Date 9-4-85

Township PLAIN

Weather CLEAR

Section 12

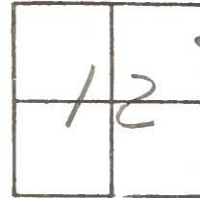
Temp. 80°

TSN, R/OE

Personnel Hoffman

BARNHISEL H.C.

FLOURNOY R.C.



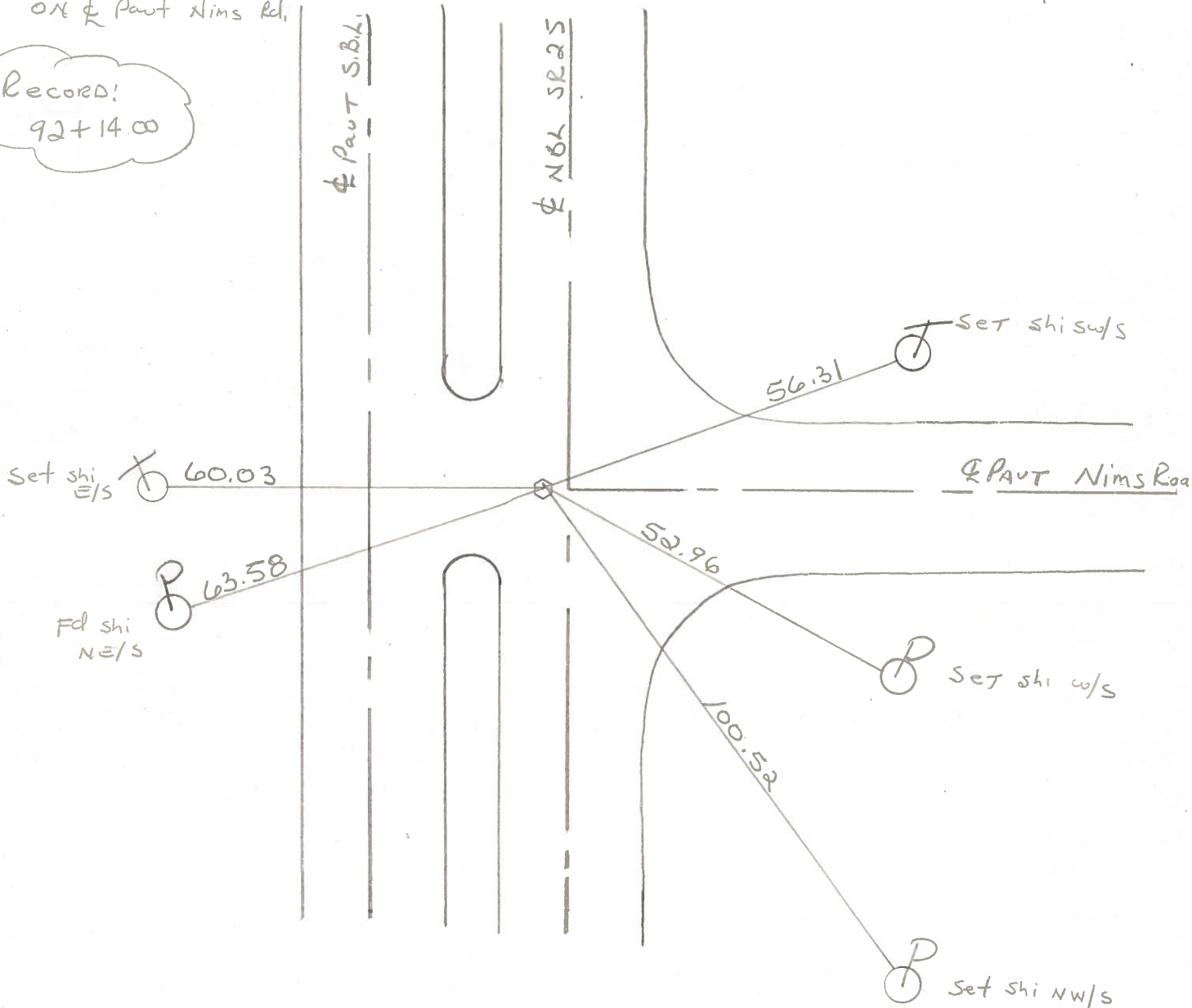
#32

Fd BRASS MON @ SURFACE
2.5' LT. of & PAUT N.B.L.
10.3' TO & MEDIAN
ON & PAUT NIMS Rd.

SLM 654+47±

Set SMALL R.K. SPK.
10-11-85 SWH

RECORD!
92+14.00



ODOT. DISTRICT 2 SURVEY OFFICE

SHEET _____ OF _____

County WOOD ^{U.S.} ~~S.R.~~ 25

Date 7-8-71

Township PLAIN

Weather CLOUDY

Section 12

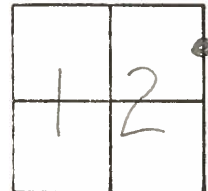
Temp. 78°

T5N, R10E

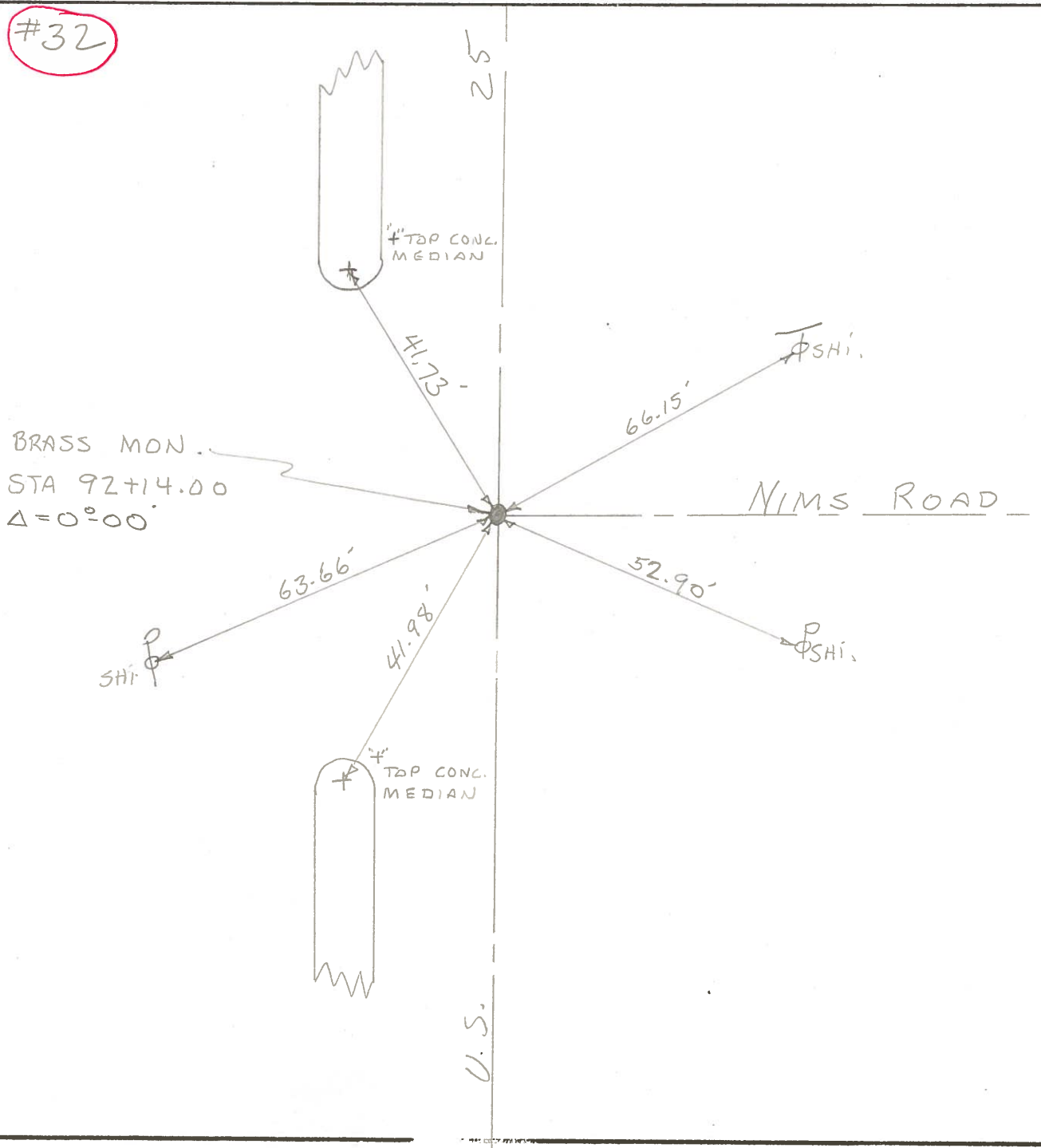
Personnel BURNSIDE

SMITH

BOWERS



#32



PERSONNEL _____ TITLE _____ PERSONNEL _____ TITLE _____
 COUNTY Wood DATE 3-23-60
 S. R. U.S. #25 WEATHER 9-63
 SEC. _____ TEMP. _____
 DESCRIPTION (Moberg Mon. (Raised & Greased)) JOB NO. _____

(29)

LEFT	CENTER LINE	RIGHT	TEMP.
T-35/63			
Sta. 40+69.51	3-23-60	"X" Conc. med. strip S.W.	45.09
About 80 Rods N. of E 1/4		Shiner in T.P. N.W. 98.30'	98.6
past sec. 13 Plain twp.	Raised Brass Mon.	Shiner in P.P. W. 81.31'	81.24
R.R. spike Van Camp Rd. West.		Shiner in T.P. S.W. 77.86'	78.00
ew-Bowling Greens W. Corp. line		Shiner in T. Pole S.E.	84.87
#254		"X" Conc. med. strip N.W.	21.29
		Shi. in Pav't West	10.86

(30)

Sta. 52+73.27		"X" Conc. Med. strip N.W.	45.4
Cor. stone 33' N. of N.W.		Shiner in 34" Walnut S.E.	53.0
cor. sec. 18 Center twp.		Shiner in 20" Apple N.E.	81.1
Brass mon	Newton Ed.	Shiner in T.P.	63.2
#255		Shiner in 8" twin Elm W.	66.90
		Shiner cor. Post N.E.	67.40
		Shiner P. Pole S.E.	52.90
		"X" Conc. Med. strip S.W.	23.29
		Shi. in Pav't west	11.86

(31)

Sta. 82+90.35		Shiner in P.P. N.W.	80.2
E.P. Spike & R/W Co.		Shiner in T.P. W.S.W.	60.00
Ed. W. No Angle		Shiner in Ed. sign S.W.	85.4
Set new mon.	Bishop Ed.	Shiner in P. Pole N.E.	55.3
#256		"X" Conc. Med. strip N.W.	46.08
		"X" Conc. Med. strip S.W.	25.9

(32)

Sta. 92+14.00		"X" Conc. Med. strip N.W.	41.8
& Ed. E. E.P. Spike		N.W. cor. Gas. Sta. S.E. 62.32'	62.0
BRASS Mon.	Nims Rd. E.	N. pt. W. pump island	57.7
#257		Shiner in P.P. N.E.	38.0
		Shiner T. Pole N.E.	66.1
		Shiner P. Pole S.E.	52.0
		"X" Conc. Med. strip S.W.	42.0

(33)

Sta. 106+92.75		Shiner in P.P. S.E.	35.4
SE. cor. sec. 1 Plain Twp.		Shiner in T.P. S.W.	74.2
Set new mon.		Shiner in cor. post W.	59.10
#258		"X" Conc. Med. strip N.W.	20.5
		"X" Conc. " " W.	7.9