

O.D.O.T. DISTRICT 2 SURVEY OFFICE (USE ONLY)

PERSONNEL

REFERENCE NO. 37 A

SHEET 12 OF 19

NOTES AUBLE

DATE 5/27/22

ROUTE SR 25

H.C. NIESE

WEATHER BREEZY

COUNTY WOOD

R.C. WHITAKER

TEMP. 65°

TOWNSHIP MIDDLETON

SECTION 31

DWG BY RHOADES

PID 110037

T 5 N R 10 E

TYPE MONUMENT MAG SHANK

~~ON SURFACE~~ - BELOW 0.5"

OFFSET ϕ PAVEMENT 3.8' NB ϕ LT : ~~RT~~

- TO - EDGE PAVEMENT

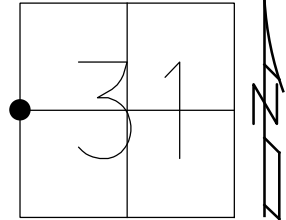
STATION: 760+17.67

HORIZ.DATUM: NAD83 2011

GEOID: NAVD88 2018

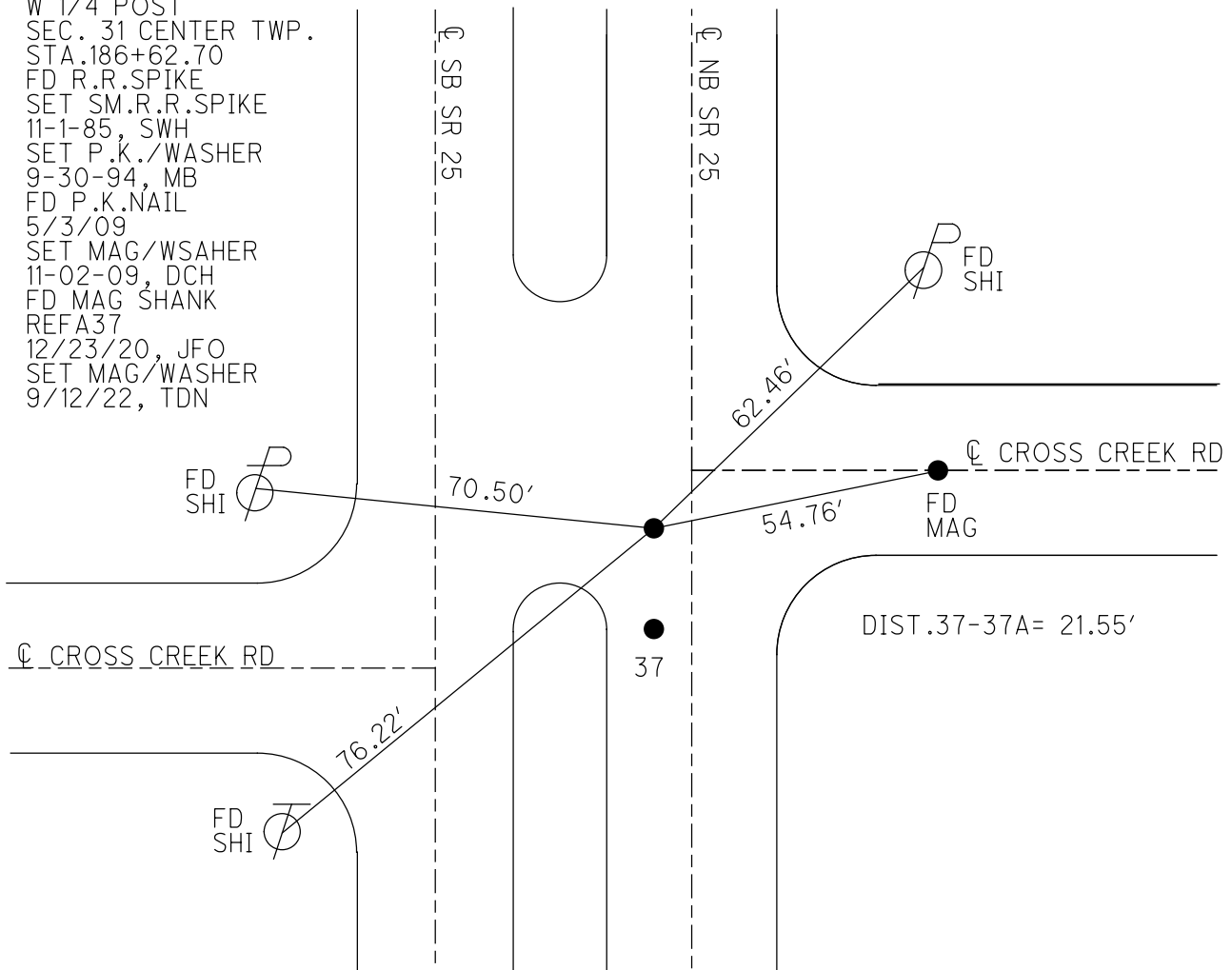
GRID: NORTHING: 646995.753

EASTING: 1652939.038



RECORD:

W 1/4 POST
 SEC. 31 CENTER TWP.
 STA.186+62.70
 FD R.R.SPIKE
 SET SM.R.R.SPIKE
 11-1-85, SWH
 SET P.K./WASHER
 9-30-94, MB
 FD P.K.NAIL
 5/3/09
 SET MAG/WASHER
 11-02-09, DCH
 FD MAG SHANK
 REFA37
 12/23/20, JFO
 SET MAG/WASHER
 9/12/22, TDN



O.D.O.T. DISTRICT 2 SURVEY OFFICE

PERSONNEL

REFERENCE NO. 37 A

SHEET 11 OF 18

NOTES HOMAN

DATE 5-3-09

ROUTE US 25

H.C. ROUSOS

WEATHER CLEAR

COUNTY WOOD

R.C. HOMAN

TEMP. 70°

TOWNSHIP PLAIN CENTER, MIDDLETOWN

SECTION 31,36

T 5 N R 10,11 E

TYPE MONUMENT PK NAIL

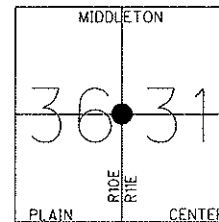
ON SURFACE - ~~BELOW~~ YES

LEFT - Q PAV'T - ~~RIGHT~~ 3.8' N.B.L.

7.1' TO LT EDGE PAVEMENT

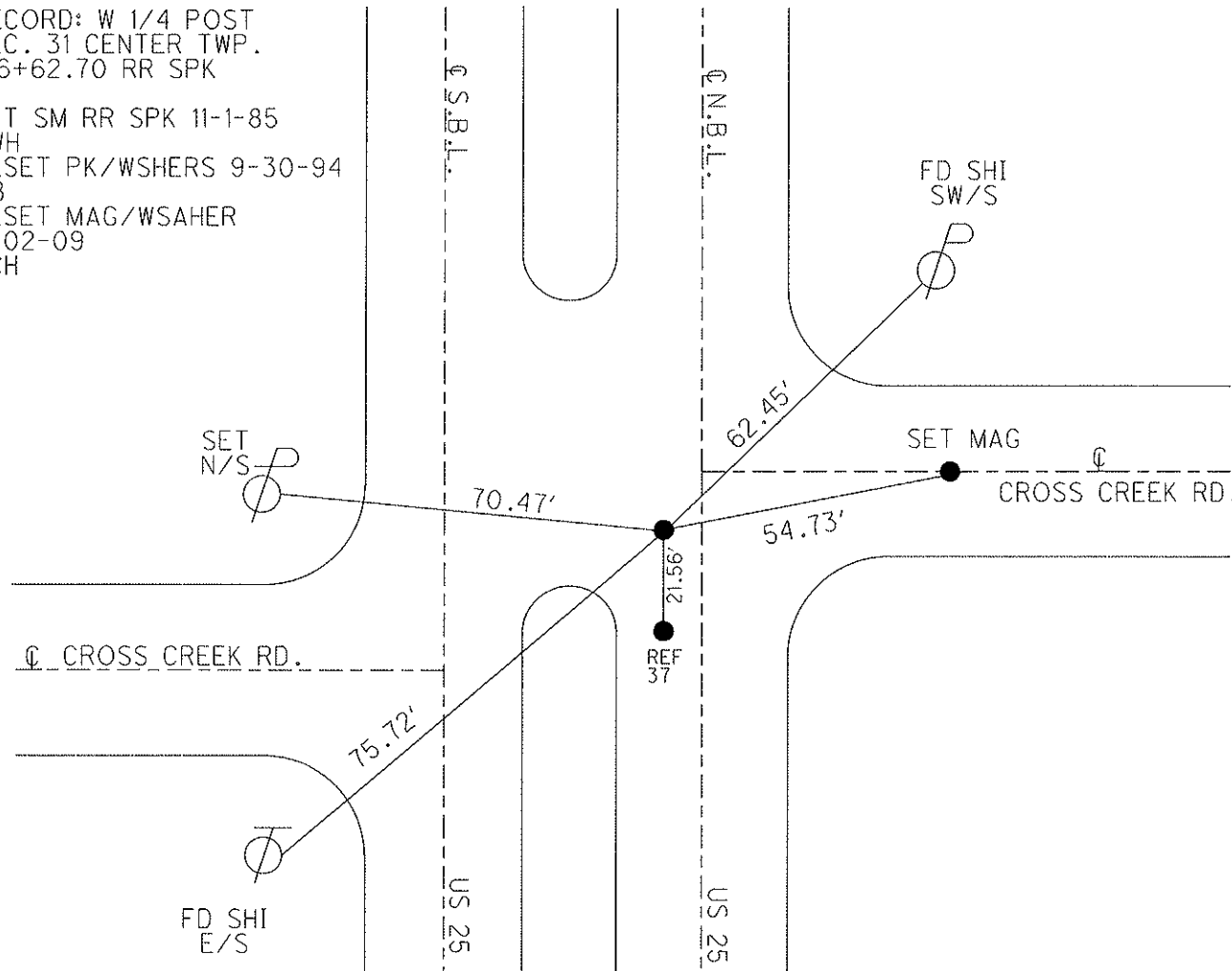
S.L.M. 748+89

GPS Northing: 646995.824 Easting: 1652938.916



RECORD: W 1/4 POST
SEC. 31 CENTER TWP.
186+62.70 RR SPK

SET SM RR SPK 11-1-85
SWH
RESET PK/WSHERS 9-30-94
MB
RESET MAG/WSAHER
11-02-09
DCH



O.D.O.T. DISTRICT 2 SURVEY OFFICE

PERSONNEL _____ REFERENCE NO. 37 SHEET 8 OF 12

NOTES VAN DUSEN
 H.C. BARNHISEL III
 R.C. HERMIKLER
SLOVAK

DATE 8-1-94
 WEATHER CLEAR
 TEMP. +75°

ROUTE U.S. 25
 COUNTY WOOD
 TOWNSHIP PLAIN, CENTER, MIDDLETON
 SECTION _____
 T. 5 N. R. 11 E

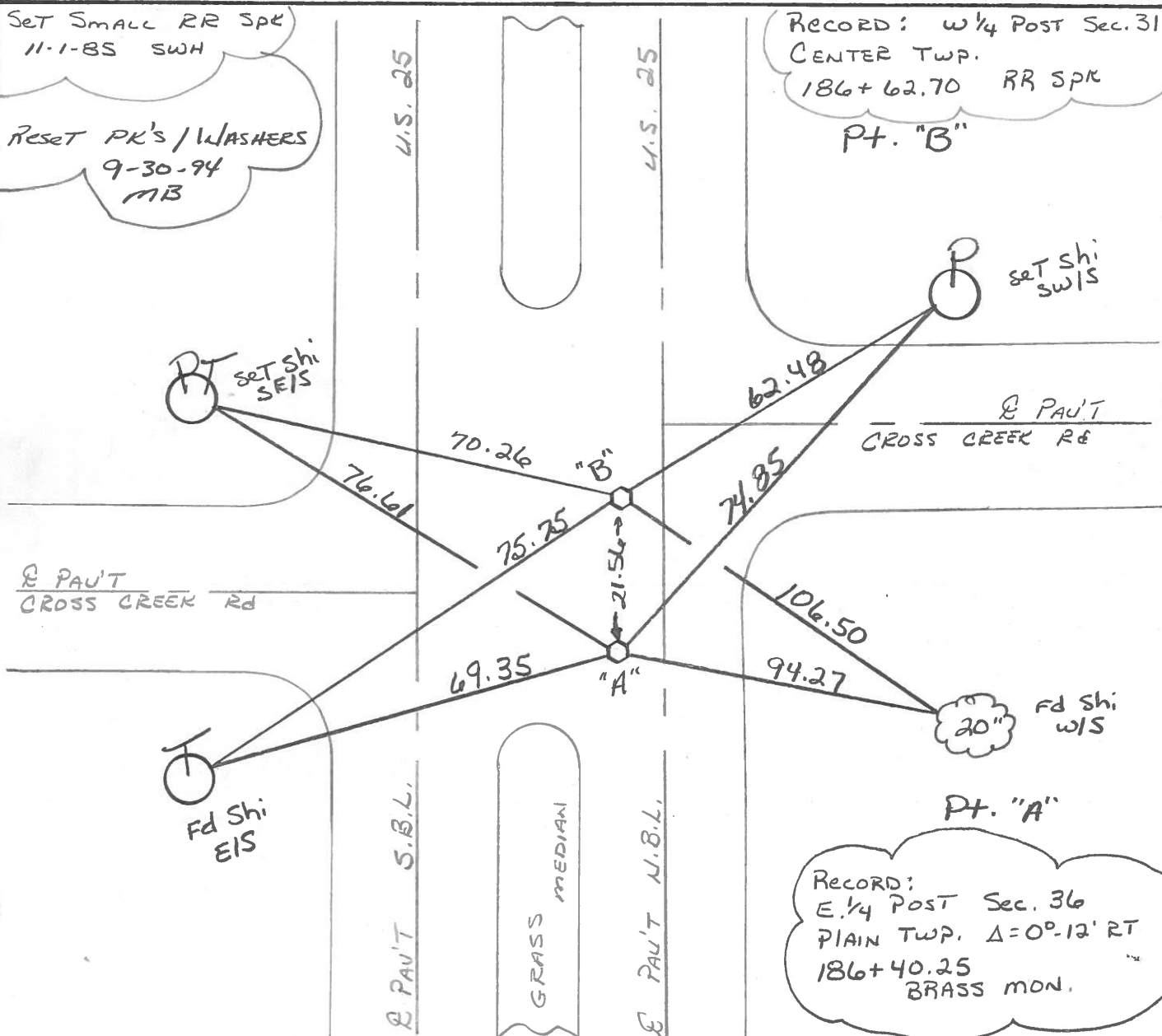
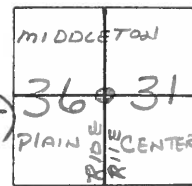
TYPE MONUMENT Sm. RR Spk's

ON SURFACE - ~~BELOW~~ yes yes

LEFT- & PAU'T. - ~~RIGHT~~ 3.8 NBL 3.8

^{BOTH PK'S} 7.1 TO LT EDGE PAVEMENT (Pt. "B" 4' N. OF E WEST)

S.L.M. 748+67 748+89



QD.O.T. DISTRICT 2 SURVEY OFFICE

SHEET _____ OF _____

County Wood S.R. 25

Date 9-4-85

Township PLAIN - CENTER - MIDDLETON

Weather P. CLEAR

Section 36 - 31

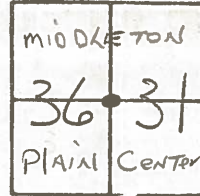
Temp. 85°

TSN, R/OE

Personnel Hoffman

BARNHISEL H.C.

Flournoy R.C.

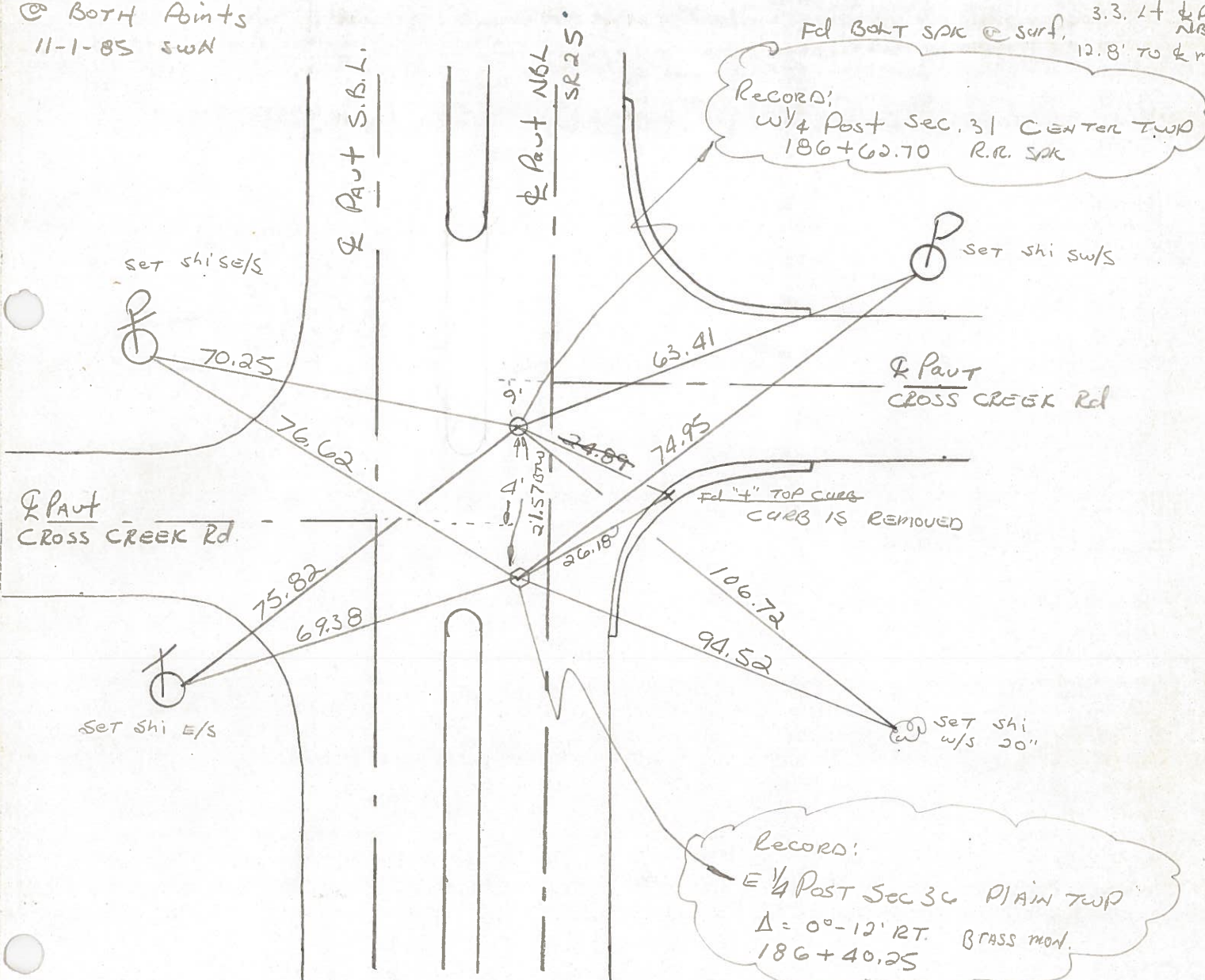


#37

Set small RR SPK

@ BOTH Points

11-1-85 SWN



Fd BOLT SPK @ surf, 3.3' LT of Q PAUT NBL, 12.8' TO Q M

Records:
W 1/4 Post Sec. 31 CENTER TWP
186+62.70 R.R. SPK

Set Shi SW/S

Q PAUT
CROSS CREEK Rd

Q PAUT
CROSS CREEK Rd

Fd 4" TOP CURB
CURB IS REMOVED

Set Shi E/S

Set Shi
W/S 20"

Records:
E 1/4 Post Sec 36 PLAIN TWP
Δ = 0°-12' RT. BRASS MON.
186+40.25

Fd BRASS MON @ surface
SLM 718+72±
3.2' LT. of Q PAUT NBL
12.0' TO Q M EDIAN

OD.O.T. DISTRICT 2 SURVEY OFFICE

SHEET _____ OF _____

County WOOD ^{U.S.} ~~S.R.~~ 25

Date 7-9-11

Township PLAIN - CENTER

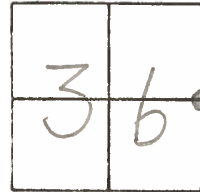
Weather CLOUDY

Section _____

Temp. 80°

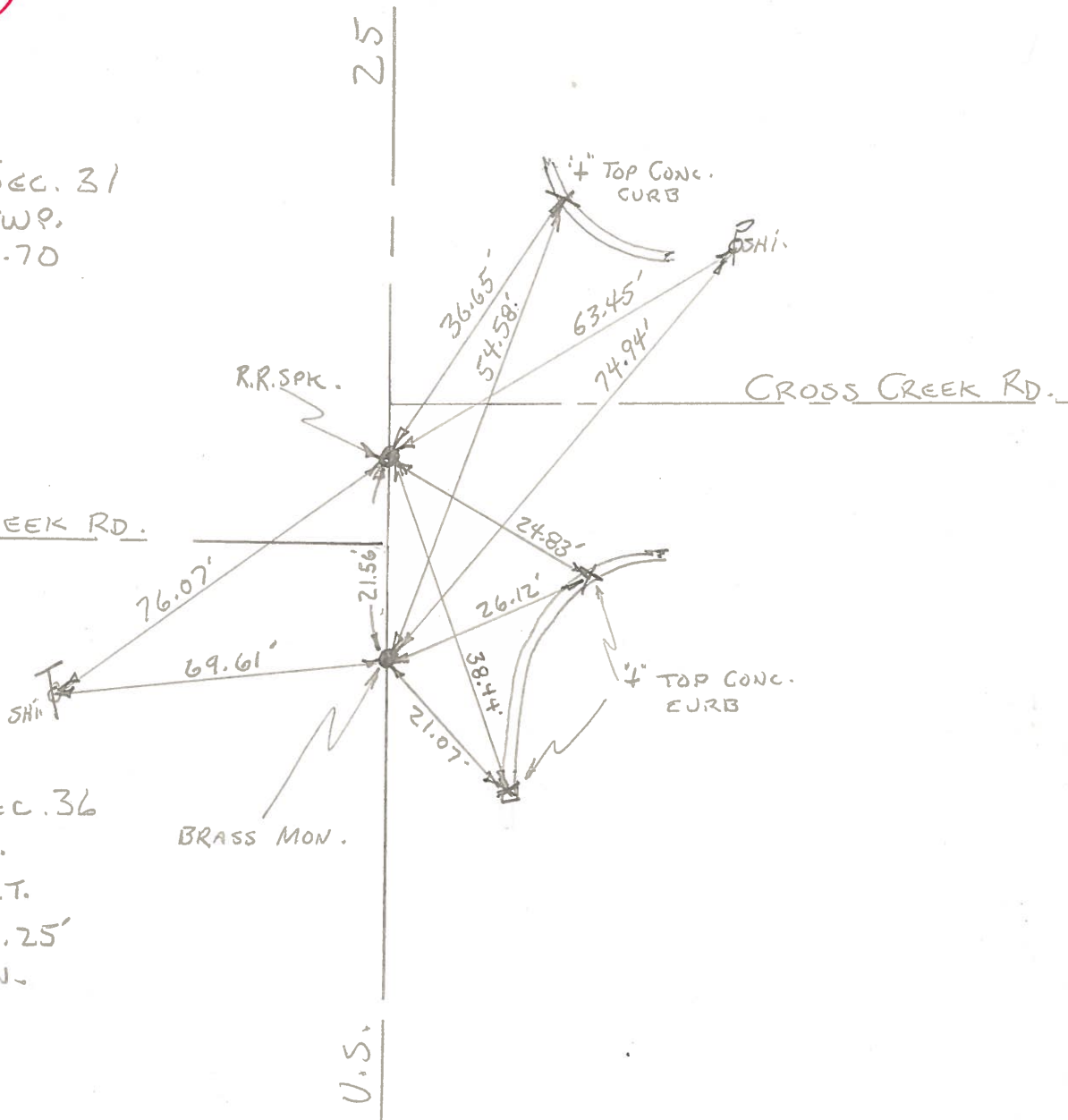
T5N, R10E

Personnel BURNSIDE



#37

W 1/4 Post Sec. 31
CENTER TWP.
STA. 186+62.70
R.R. SPKE



E. 1/4 Post Sec. 36
PLAIN TWP.
A = 0°12' RT.
STA. 186+40.25'
BRASS MON.

PERSONNEL	TITLE	PERSONNEL	TITLE	COUNTY	DATE
Sworden & Crew				Wood	3-23-60
				S. R. U.S. #25	WEATHER
				SEC.	TEMP.
DESCRIPTION	LEFT	CENTER LINE	RIGHT	JOB NO.	

Sta. 131+74.66 (mea) + 81.54 (Rec.) W 1/4 post sec. 6 Center twp. Iron pin <u>Brass Mon</u>	#259	(Simonds Rd)	Shiner in P. Pole S.S.W. 63. Shiner in hickory S.E. 41.64-41.7 Shiner in 10" Ash N.E. 44.5 Shiner in T.P. S.W. 65.4 "X" Conc. Med. strip N.W. 29.2 "X" ✓ ✓ ✓ S.W. 28.1
Sta. 133+39.82 (mea) + 46.70 (Rec.) E. 1/4 post sec. 1 Plain twp.	#260	Did Not Find	Pin suppose to be gone
Sta. 147+61.65 (mea) + 69.19 (Rec.) E. & R/W (Union hill Rd.) <u>BRASS Mon.</u>	#261		"X" Conc. Med. strip N.W. 26.90 ^{.86'} S.W. to T.P. 109.50 W.N.W. to T.P. 61.83 S.E. to P.P. 50.72-36-43 "X" Conc. Med. strip S.W. 37.42 ^{.40}
Sta. 160+83.77 (mea) + 91.68 (rec.) N.W. cor. sec. 6 center twp. Iron Pin Δ = 0°-08' Lt. (Sugar Ridge Rd.) <u>BRASS Mon.</u>	#262		"X" Conc. Med. strip S.W. 31.18 ^{44.27} Shiner in 12" ^{Elm} maple N.E. 37.92 Shiner in maple W.N.W. 97.63 Shiner in maple W.S.W. 77.07 Shiner in walnut E.S.E. 56.5 Shiner in P. Pole S.E. 52.5 "X" in conc. Med. strip N.W. 41.4
Sta. 186+40.25 E. 1/4 post N. sec. 36 Plain twp. Cor. Stone P.I. Δ = 0°-12' Rt. <u>BRASS Mon.</u> Cross Creek Rd.	#263		gone ✓ Shiner in N. side 12" walnut S.E. 36. ✓ Shiner in S. side 16" Apple N.E. 72.1 ✓ X in N. end N.E. wingwall E.S.E. 28. ✓ Shiner in 14" Ash N.E. 61.1 ✓ Shiner in 10" Walnut E. 27.4 N.E. cor. conc. cor. post S.W. 74.2 Shiner in P. Pole N.E. 74.9 "X" Top Curb S.E. 21.0 "X" Top Curb N.E. 54.6

O.D.O.T. DISTRICT 2 SURVEY OFFICE

PERSONNEL _____

REFERENCE NO. 37 A

SHEET 11 OF 16

NOTES HOMAN

DATE 5-3-09

ROUTE US 25

H.C. ROUSOS

WEATHER CLEAR

COUNTY WOOD

R.C. HOMAN

TEMP. 70°

TOWNSHIP PLAIN, CENTER, MIDDLETOWN

SECTION 31, 36

T 5 N R 10, 11 E

TYPE MONUMENT PK NAIL

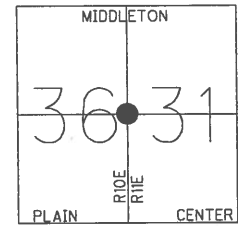
ON SURFACE - ~~BELOW~~ YES

LEFT - C PAV'T - ~~RIGHT~~ 3.8' N.B.L.

7.1' TO LT EDGE PAVEMENT

S.L.M. 748+89

GPS Northing: 646995.824 Easting: 1652938.916



RECORD: W 1/4 POST
SEC. 31 CENTER TWP.
186+62.70 RR SPK

SET SM RR SPK 11-1-85
SWH
RESET PK/WSHERS 9-30-94
MB
RESET MAG/WSAHER
11-02-09
DCH

