

O.D.O.T. DISTRICT 2 SURVEY OFFICE (USE ONLY)

PERSONNEL

REFERENCE NO. 51

SHEET 12 OF 13

NOTES STONE DATE 4/11/91
 H.C. CURTIS WEATHER COOL
 R.C. HOUSEHOLDER TEMP. 49°

ROUTE SR 25
 COUNTY WOOD
 TOWNSHIP PERRYSBURG
 SECTION 18
 T 6 N R 11 E

DWG BY RHOADES PID 102808

TYPE MONUMENT P.K.NAIL

ON SURFACE - BELOW ON

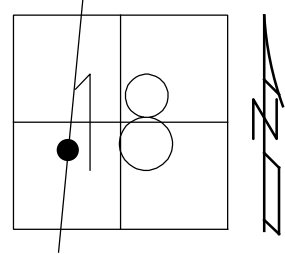
OFFSET ϕ PAVEMENT ON LT : RT

- TO - EDGE PAVEMENT

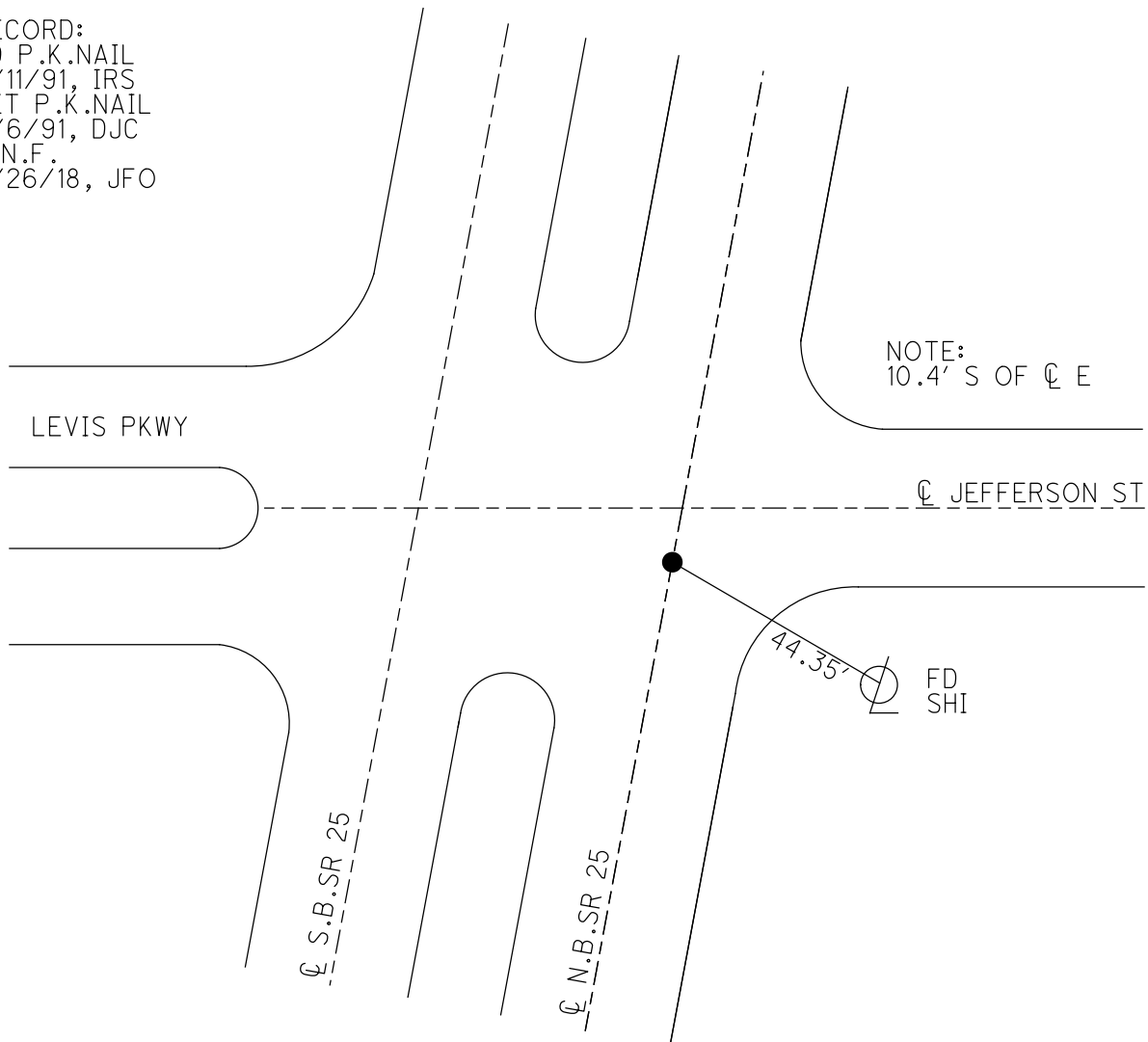
STATION: 1081+96

HORIZ.DATUM: _____ GEOID: _____

GRID: NORTHING: _____ EASTING: _____



RECORD:
 FD P.K.NAIL
 4/11/91, IRS
 SET P.K.NAIL
 6/6/91, DJC
 D.N.F.
 3/26/18, JFO



O.D.O.T. DISTRICT 2 SURVEY OFFICE

PERSONNEL _____

REFERENCE NO. 51

SHEET 18 OF 29

NOTES 1. Stone

H.C. D. Curtis

R.C. J. Hoosholder

DATE 11 April 91

WEATHER Cool

TEMP. 79°

ROUTE SR# 25

COUNTY Wood

TOWNSHIP Perrysburg

SECTION 18

T. R.

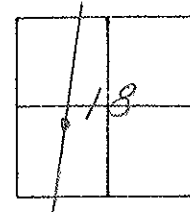
TYPE MONUMENT PK Nail

ON SURFACE - BELOW Surface

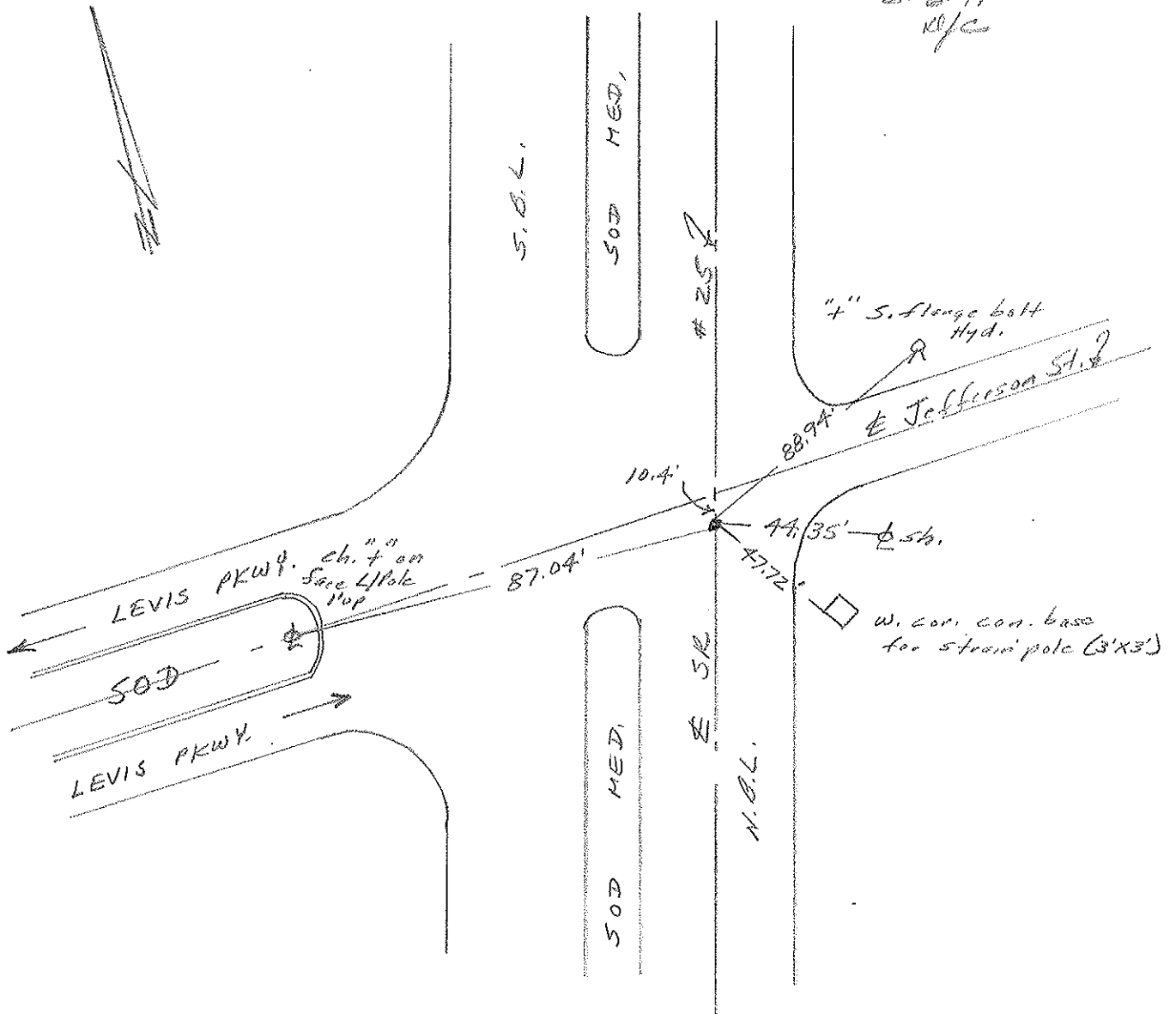
LEFT - & PAV'T. - RIGHT _____

_____ TO _____ EDGE PAVEMENT

S.L.M. 1081+96



SET P.K. NAIL TO SURFACE
6-6-91
K/C



OD.O.T. DISTRICT 2 SURVEY OFFICE

SHEET _____ OF _____

County Wood S.R. 25

Date 11-20-81

Township Perrysburg

Weather Cloudy

Section 18

Temp. +35°

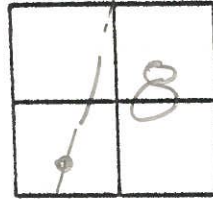
TIN, RILE

Personnel HOFFMAN

Householder

Loehrke

#51



Fd. small spk, 1" below surface
(should be over BRASS med.)

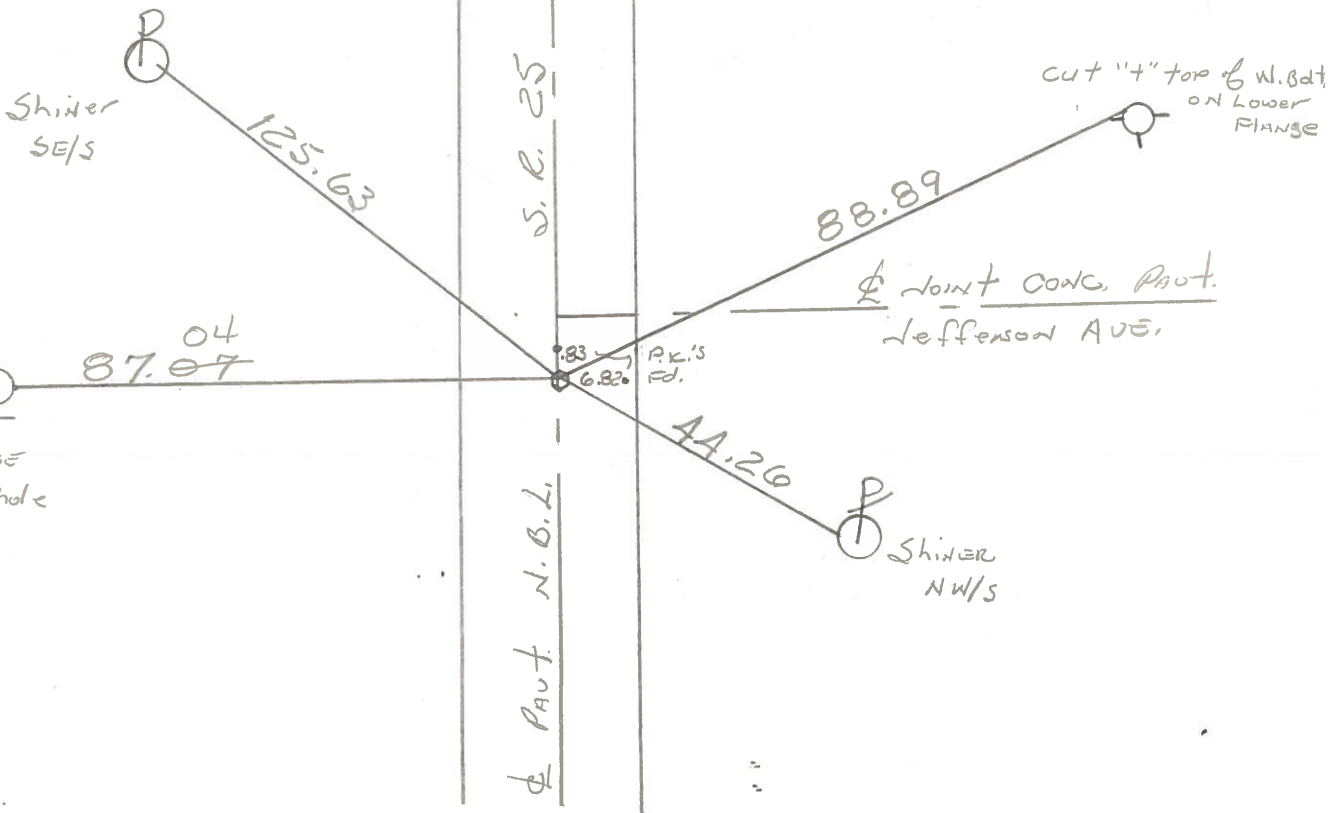
@ ϕ PAUT N.B.L. S.R. 25
10.7' S. of ϕ Jefferson

Sta. 520+08.70

No ϕ Rec.

Project Sta \pm 1082+35

SET P.K. NAIL
8-5-83 S.W.H.



PERSONNEL TITLE PERSONNEL TITLE

COUNTY Wood

DATE 3-25-60

S. R. U.S. #25

WEATHER

SEC.

TEMP.

Mohora Mon. Raised & Greased

JOB NO.

DESCRIPTION

LEFT

CENTER LINE

RIGHT

DESCRIPTION	LEFT	CENTER LINE	RIGHT	JOB NO.
Sta. 445 + 53.92 $\Delta = 0^\circ 07' \text{ Lt.}$ Five Point Rd.	Set mon. #278	plumbed	Shiner in P. Pole N.W. 74.78 Shiner in P. Pole N.E. 65.33 W.S.W. to X on top N. end E. curb #1-2 C.B. 71.09 W.N.W. to X on top S. end E curb. #1-2 C.B. 62.79 N.W. to X on top S.E. cor. top #2-6 C.B. 33.53 S.W. to X on top S.E. cor. top #2-6 C.B. 43.09 S.W. to shiner in T.P. 83.25 86.94 N.E. To shiner in P. Pole 53.37 S.W. to X on top S.E. cor #2-6 C.B. 31.66 N.W. to X on S-side top spec. inlet 48.65 S.E. to shiner in P.P. 32.53 S.E. to shiner in P.P. 51.72 N.W. to shiner in T.P. 92.60 S.W. to shiner in P. Pole 74.13	
Sta 499 + 84.69 $\Delta = 0^\circ 14' \text{ Lt.}$ Set mon.	85.4 (Record) Poachton Rd. #279		N.E. to shiner in W. Post of sign 42.63 E. to shiner in Apple 35.54 S.E. to shiner in P.P. 28.25 N.W. to X on top S. side spec. inlet 35.15 S.E. to shiner P. Pole 44.06 S.S.E. to shiner P. Pole 42.06	
Sta. 520 + 08.70 $\Delta = 0^\circ - 00'$ Set mon.	Jefferson St. East. #280		S.E. to shiner in 6" maple 55.2 N.E. to shiner in 8" maple 57.00 S.W. to N.E. cor brick post 95.19 N.W. to S.E. cor brick post 88.00 E. to shiner in 10" Maple 48.86 S.E. To shiner P. Pole 73.63	
Sta. 534 + 05.40 $\Delta = 0^\circ - 16' \text{ Lt.}$ Set mon.	In Front Paul Eckel Res. #281			

49

50

51