

O.D.O.T. DISTRICT 2 SURVEY OFFICE (USE ONLY)

PERSONNEL

REFERENCE NO. 1957

SHEET 2 OF 2

NOTES RHOADES

DATE 4/12/22

ROUTE CR 189

H.C. NIESE

WEATHER SUNNY

COUNTY WOOD

R.C. KETNER

TEMP. 44°

TOWNSHIP GRAND RAPIDS

O'DONNELL

SECTION 7

DWG BY RHOADES

PID 95796

T 5 N R 9 E

TYPE MONUMENT 1 1/4" IPIPE

~~ON SURFACE~~ - BELOW 5"

OFFSET \perp PAVEMENT 12' LT : ~~RT~~

ON TO RT EDGE BERM

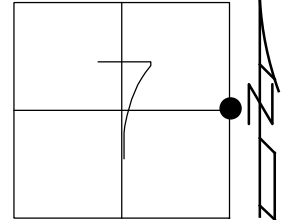
STATION: 185+60.58

HORIZ.DATUM: NAD83 2011

GEOID: NAVD88 2018

GRID: NORTHING: 637399.879

EASTING: 1594349.423



RECORD: P.I.
FD IPIPE
SV1957
FD 1 1/4" IPIPE
5" DOWN
BENT NORTHERNLY
SHOT @ BENT
SV1957
4/12/22
10/4/22, TDN

SET SHI
40" MAPLE



62.49'

SET SHI



45.95'

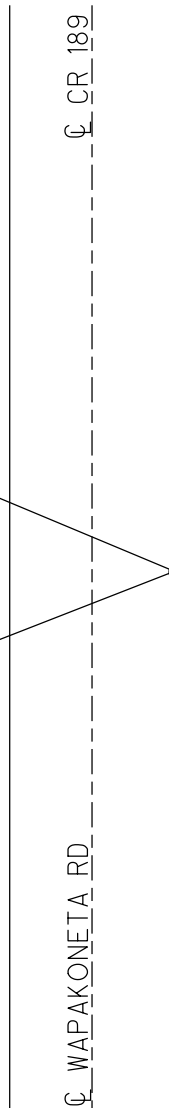
59.95'



SET SHI

\perp CR 189

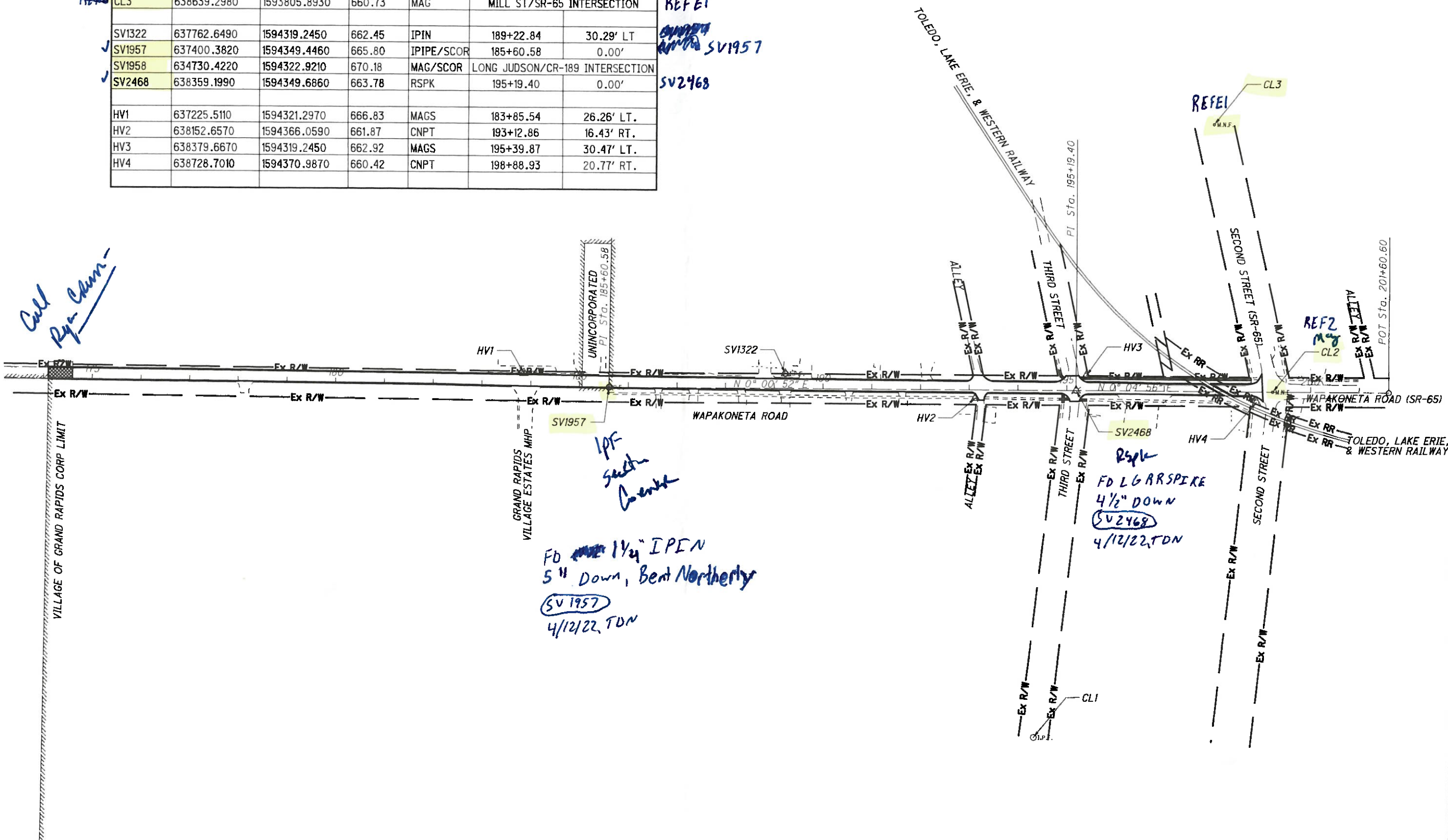
\perp WAPAKONETA RD



I:\64000\00045\11253_GR_WAPAKONETA\Design\Roadway\Sheets\11253_08001.dgn 7/6/2021 3:36:49 PM HCR-gft

POINT #	NORTHING	EASTING	ELEVATION	FEATURE	STATION	OFFSET
CL1	638275.1300	1595060.0110	661.17	IPIN	BRIDGE ST/THIRD ST INTERSECTION	
CL2	638761.5970	1594350.2640	659.93	MAG	199+21.80	0.00'
CL3	638639.2980	1593805.8930	660.73	MAG	MILL ST/SR-65 INTERSECTION	
SV1322	637762.6490	1594319.2450	662.45	IPIN	189+22.84	30.29' LT
SV1957	637400.3820	1594349.4460	665.80	IPIPE/SCOR	185+60.58	0.00'
SV1958	634730.4220	1594322.9210	670.18	MAG/SCOR	LONG JUDSON/CR-189 INTERSECTION	
SV2468	638359.1990	1594349.6860	663.78	RSPK	195+19.40	0.00'
HV1	637225.5110	1594321.2970	666.83	MAGS	183+85.54	26.26' LT.
HV2	638152.6570	1594366.0590	661.87	CNPT	193+12.86	16.43' RT.
HV3	638379.6670	1594319.2450	662.92	MAGS	195+39.87	30.47' LT.
HV4	638728.7010	1594370.9870	660.42	CNPT	198+88.93	20.77' RT.

REF2
REFE1
SV1957
SV2468



**WAPAKONETA RD
GRAND RAPIDS**

SCHEMATIC PLAN

2
19

CALCULATED
HAC
CHECKED
TJB

0 100 200
HORIZONTAL
SCALE IN FEET