

O.D.O.T. DISTRICT 2 SURVEY OFFICE (USE ONLY)

PERSONNEL _____ REFERENCE NO. 2 B SHEET 15 OF 40

NOTES RHOADES DATE 4/22/20 ROUTE SR 65
 H.C. O'DONNELL WEATHER CLOUDY COUNTY WOOD
 R.C. RHOADES TEMP. 39° TOWNSHIP GRAND RAPIDS
 SECTION 8

DWG BY O'DONNELL PID 95796

T 5 N R 9 E

TYPE MONUMENT MAG/WASHER

ON SURFACE - ~~BELOW~~ ON

OFFSET Q PAVEMENT 6.2' LT : ~~RT~~

2.8' TO LT EDGE PAVEMENT

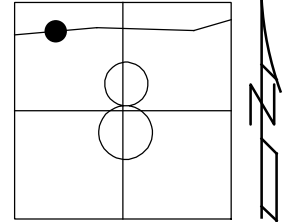
STATION: 61+29.55

HORZ.DATUM: NAD83 2011

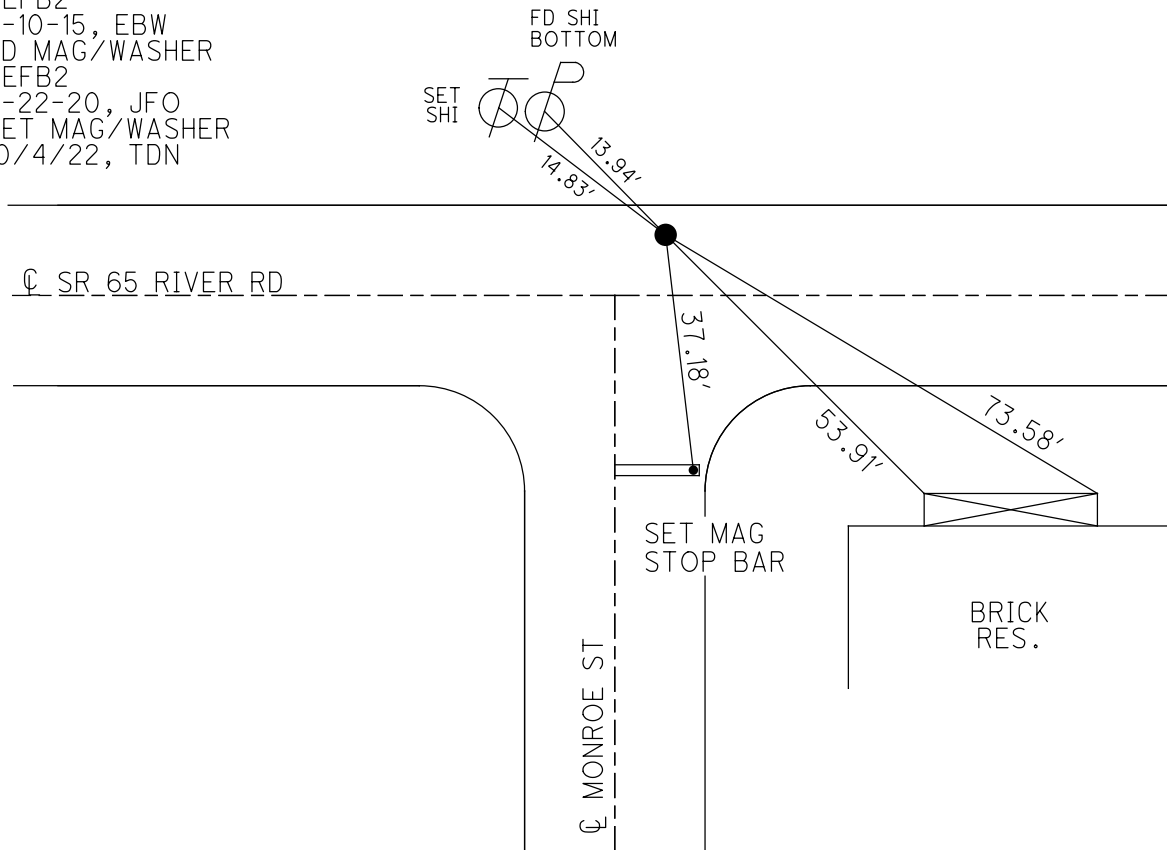
GEOID: NAVD88 2018

GRID: NORTHING: 639255.002

EASTING: 1594706.142



RECORD: P.I.
 $\Delta = 21^\circ 56' RT$
 SET P.K./WASHER
 11-21-89, SWH
 FD P.K./WASHER
 6-18-04, DCH
 SET MAG/WASHER
 9-20-04, RGN
 FD MAG NAIL
 REFB2
 3-10-15, EBW
 FD MAG/WASHER
 REFB2
 4-22-20, JFO
 SET MAG/WASHER
 10/4/22, TDN



O.D.O.T. DISTRICT 2 SURVEY OFFICE (USE ONLY)

PERSONNEL _____ REFERENCE NO. 2 B SHEET 7 OF 9

NOTES RHOADES DATE 4-22-2020 ROUTE SR 65

H.C. O'DONNELL WEATHER CLOUDY COUNTY WOOD

R.C. RHOADES TEMP. 39° TOWNSHIP GRAND RAPIDS

SECTION 8

DWG BY O'DONNELL PID 95796

T 5 N R 9 E

TYPE MONUMENT MAG/WASHER

ON SURFACE - ~~BELOW~~ ON

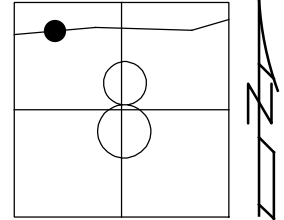
OFFSET \varnothing PAVEMENT 6.2' LT : ~~RT~~

2.8' TO LT EDGE PAVEMENT

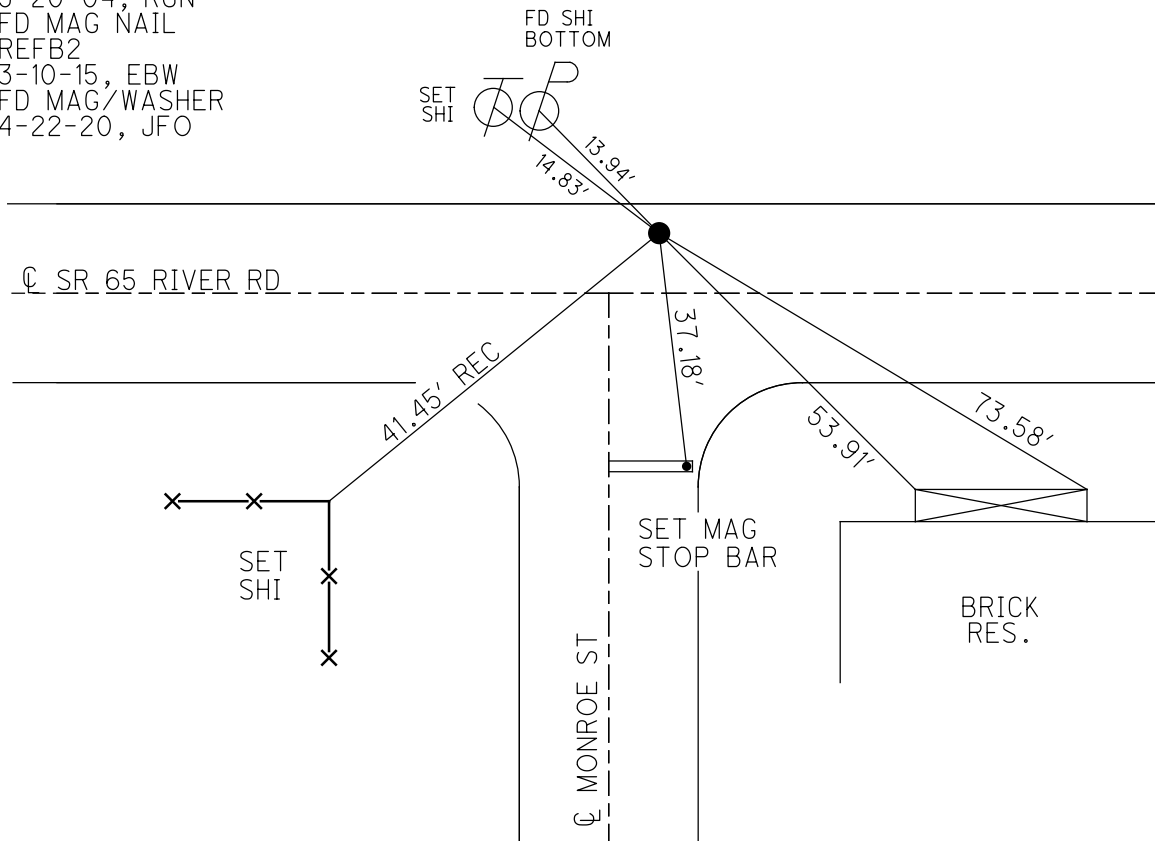
STATION: 61+33

HORZ.DATUM: NAD83 2011 GEOID: 2012A

GRID: NORTHING: 639255.033 EASTING: 1594706.139



RECORD: P.I.
 $\Delta = 21^\circ 56' RT$
 SET P.K./WASHER
 11-21-89, SWH
 FD P.K./WASHER
 6-18-04, DCH
 SET MAG/WASHER
 9-20-04, RGN
 FD MAG NAIL
 REFB2
 3-10-15, EBW
 FD MAG/WASHER
 4-22-20, JFO



O.D.O.T. DISTRICT 2 SURVEY OFFICE

PERSONNEL _____

REFERENCE NO. 2-B

SHEET 10 OF 49

NOTES Huss

H.C. Homan

R.C. Adkins

DATE 6-18-04

WEATHER Cl dy

TEMP. +83°F

ROUTE S.R. 65

COUNTY Wood

TOWNSHIP Grand Rapids

SECTION 8

T 5 N R 9 E

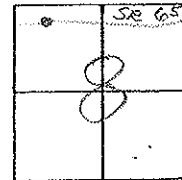
TYPE MONUMENT PK/w

ON SURFACE - ~~BELOW~~ Surface

LEFT - ~~PAV'T~~ - RIGHT 6.2' Lt

2.8' TO Lt. EDGE PAVEMENT (1.8' E. of E. of Monroe)

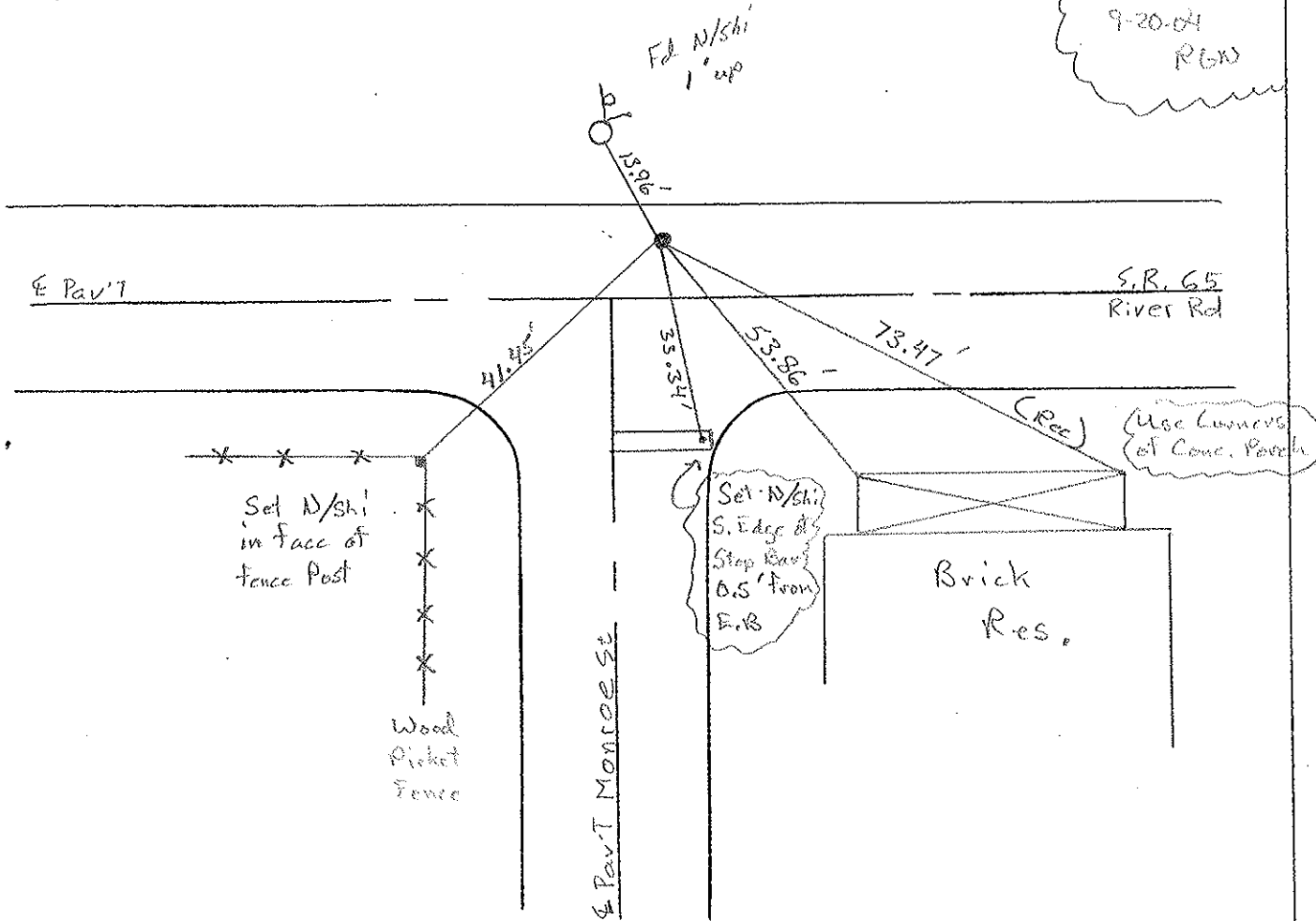
S.L.M. 61+33



Record: P.I.
Δ = 21° 56 RT

Set PK/washer
11-21-89
SWH

Set Mag/Wash
9-20-04
RGW



O.D.O.T. DISTRICT 2 SURVEY OFFICE

PERSONNEL

REFERENCE NO. 2-B

SHEET 6 OF 12

NOTES HOFFMAN

H.C. LOEHRKE

DATE 9-7-89

ROUTE SR 65

R.G. BARNHISEL

WEATHER CLEAR

COUNTY WOOD

TEMP. 88°

TOWNSHIP GRAND RAPIDS

SECTION 8

T5 N R 9 E

TYPE MONUMENT "A" = P.K. NAIL

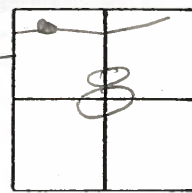
Set P.K./WASHER
11-21-89
SWH

ON SURFACE - BELOW YES

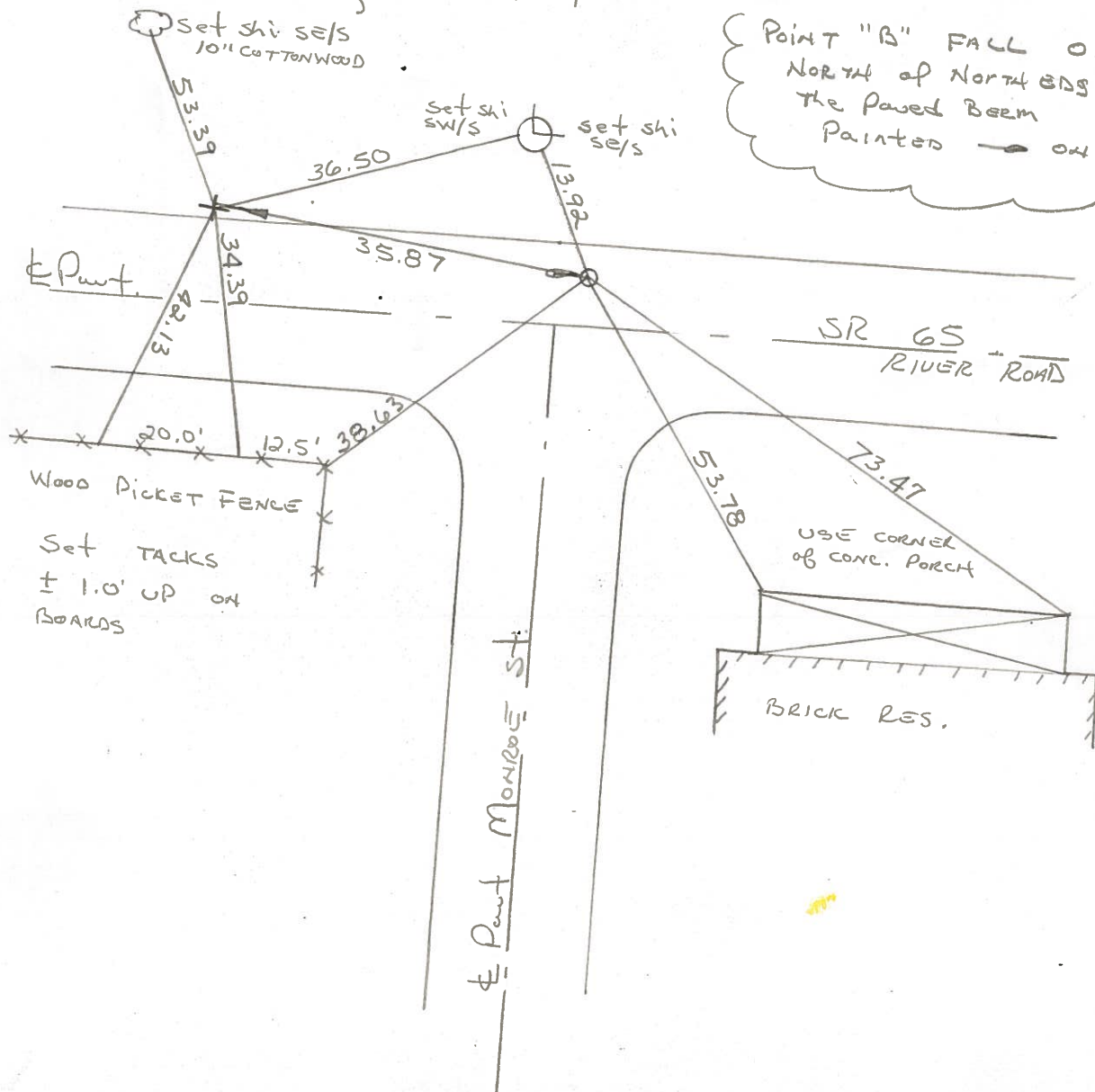
LEFT-~~E~~ PAVT. - RIGHT 6.2

4.1 TO LT. EDGE PAVEMENT 1.8' EAST & MONROE

S.L.M. 61+33



"B" = "T" FOUND CUT IN OLD CONCRETE PAVEMENT (P.I. Δ = 21° 56' RT RECORD)
5" BELOW SURFACE; 12.5' LT. of E PAVT SR 65



Point "B" FALL 0.35'
NORMAL of NORTH EDGE of
the Paved BEAM
Painted → on Pavt

WOOD PICKET FENCE
Set TACKS
± 1.0' UP ON
BOARDS

USE CORNER
of CONC. PORCH
BRICK RES.

County Wood S.R. 65

Date 12-9-81

Township Grand Rapids

Weather Cloudy

Section 8 @ Grand Rapids

Temp. + 30°

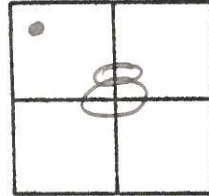
T5N, R9E

Personnel Hoffman

Lochrke

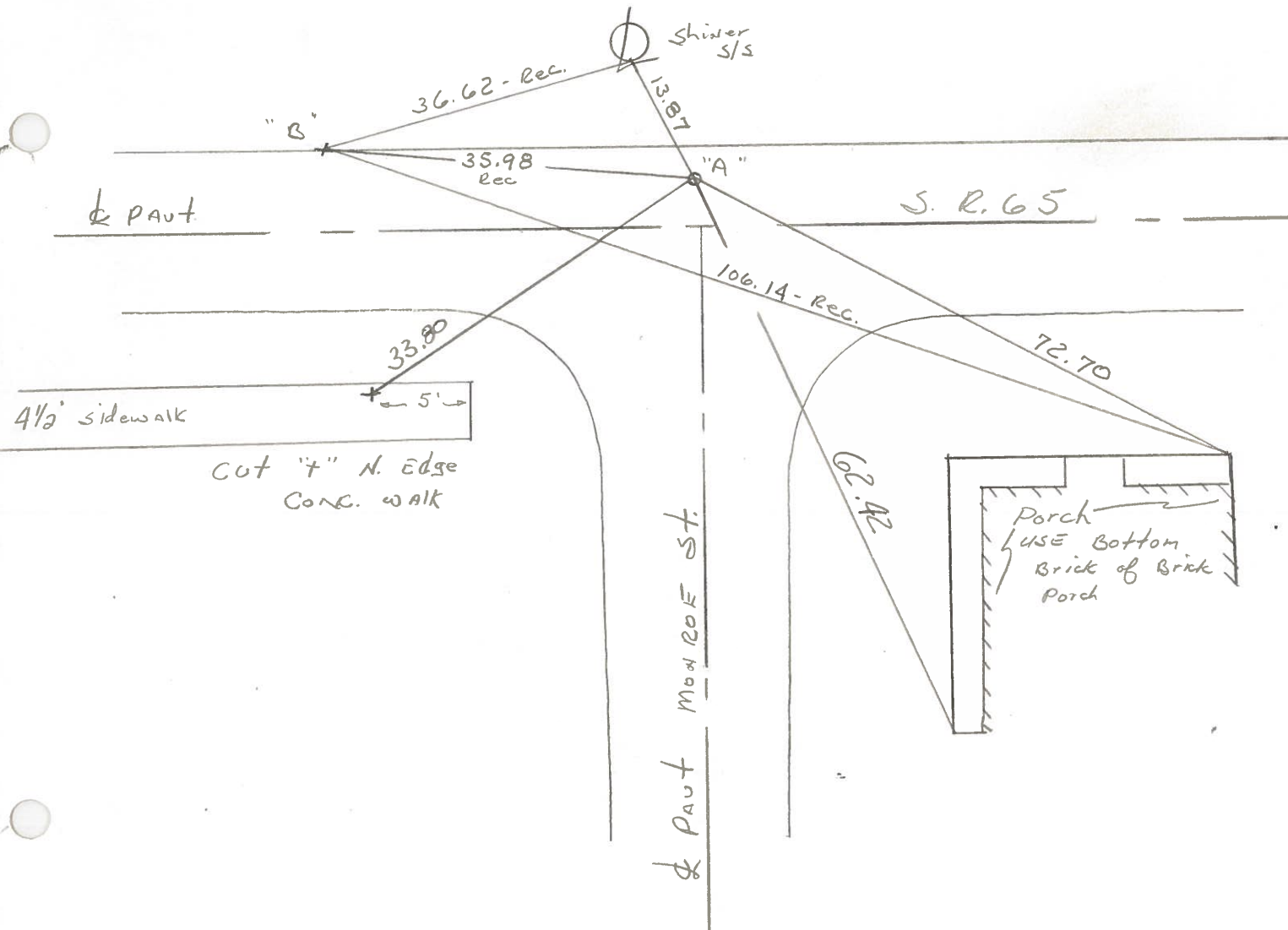
Householder

2-B



Pt. "A" Fd. P.K. @ SURFACE
N. of & PAUT SR 65
TO N.E.P.

Pt. "B" Could not FIND (did not set @ this DATE)
A SPK OR +, shown on 1973 notes.
P.I. Δ = 210-56' RT. -Rec.



LD-5-(25M-2-59)

SHEET NO.

| PERSONNEL | TITLE | PERSONNEL | TITLE |
|-----------|-------|-----------|-------|
| BURNSIDE | | BAGDONAS | |
| SMITH | | | |
| POWERS | | | |
| KISOWSKI | | | |

COUNTY WOOD DATE 7-17-73
 S. R. 65 WEATHER CLEAR
 SEC. GRAND RAPIDS TEMP. +75°

DESCRIPTION CENTERLINE CONTROL TIES JOB NO.

