

O.D.O.T. DISTRICT 2 SURVEY OFFICE (USE ONLY)

PERSONNEL

REFERENCE NO. 3 C

SHEET 19 OF 40

NOTES RHOADES DATE 3/29/22  
 H.C. NIESE WEATHER CLEAR  
 R.C. KETNER TEMP. 27°  
AUBLE, O'DONNELL

ROUTE SR 65  
 COUNTY WOOD  
 TOWNSHIP GRAND RAPIDS  
 SECTION 8  
T 5 N R 9 E

DWG BY RHOADES PID 95796

TYPE MONUMENT MAG/WASHER

ON SURFACE - ~~BELOW~~ ON

OFFSET  $\varnothing$  PAVEMENT 0.5' ~~LT~~ : RT  
10.4' TO LT EDGE PAVEMENT

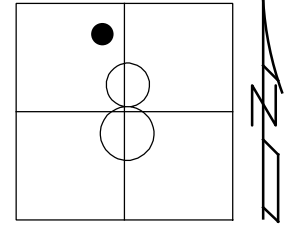
STATION: 79+30.73

HORZ. DATUM: NAD83 2011

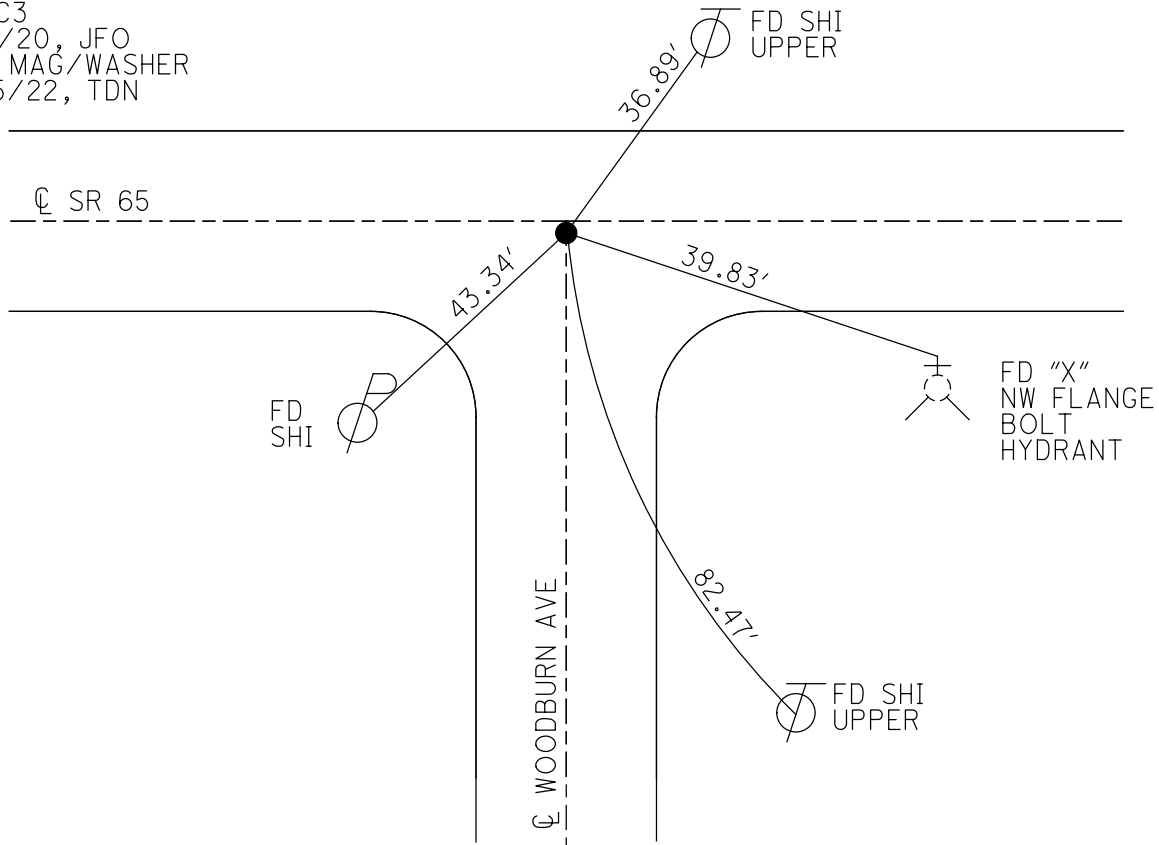
GEOID: NAVD88 2018

GRID: NORTHING: 639059.832

EASTING: 1596496.419



RECORD:  
 SET P.K./WASHER  
 11-21-89, SWH  
 FD P.K./WASHER  
 6/18/04, DCH  
 SET MAG/WASHER  
 9-20-04, RGN  
 FD MAG NAIL  
 REFC3  
 11/2/20, JFO  
 SET MAG/WASHER  
 10/5/22, TDN



O.D.O.T. DISTRICT 2 SURVEY OFFICE (USE ONLY)

PERSONNEL \_\_\_\_\_ REFERENCE NO. 3 C SHEET 2 OF 23

NOTES HUSS DATE 6/18/04 ROUTE SR 65

H.C. HOMAN WEATHER CLOUDY COUNTY WOOD

R.C. ADKINS TEMP. 78° F TOWNSHIP GRAND RAPIDS

DWG BY AUBLE PID \_\_\_\_\_ SECTION 8

T 5 N R 9 E

TYPE MONUMENT P.K./WASHER

ON SURFACE - ~~BELOW~~ ON \_\_\_\_\_

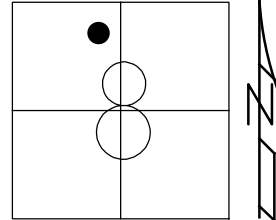
OFFSET  $\text{C}$  PAVEMENT 0.5' ~~LT~~ : RT

10.4' TO LT EDGE PAVEMENT

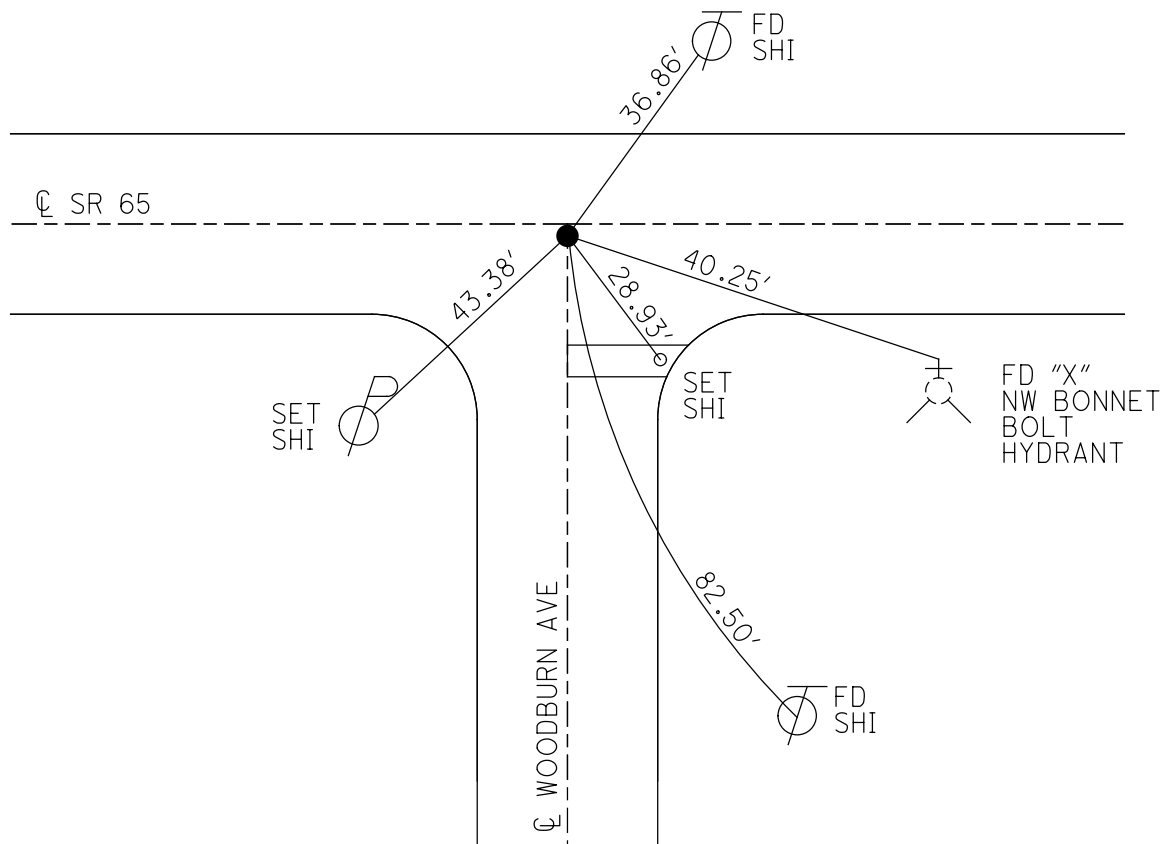
STATION: 79+34

HORIZ. DATUM: \_\_\_\_\_ GEOID: \_\_\_\_\_

GRID: NORTHING: \_\_\_\_\_ EASTING: \_\_\_\_\_



RECORD:  
 SET P.K./WASHER  
 11-21-89, SWH  
 FD P.K./WASHER  
 6/18/04, DCH  
 SET MAG/WASHER  
 9-20-04, RGN



# O.D.O.T. DISTRICT 2 SURVEY OFFICE

PERSONNEL \_\_\_\_\_

REFERENCE NO. 3-C

SHEET 14 OF 49

NOTES Huss

H.C. Duane Homan

R.C. Adkins

DATE 6-18-04

WEATHER Clay

TEMP. +78°F

ROUTE S.R. 65

COUNTY Wood

TOWNSHIP Grand Rapids

SECTION 8

T 5 N R 9 E

TYPE MONUMENT \_\_\_\_\_

PK/W

ON SURFACE - ~~BELOW~~

Swft.

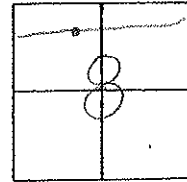
~~LEFT OF PAV'T.~~ - RIGHT

0.5 Rft.

104' TO Lt. EDGE PAVEMENT

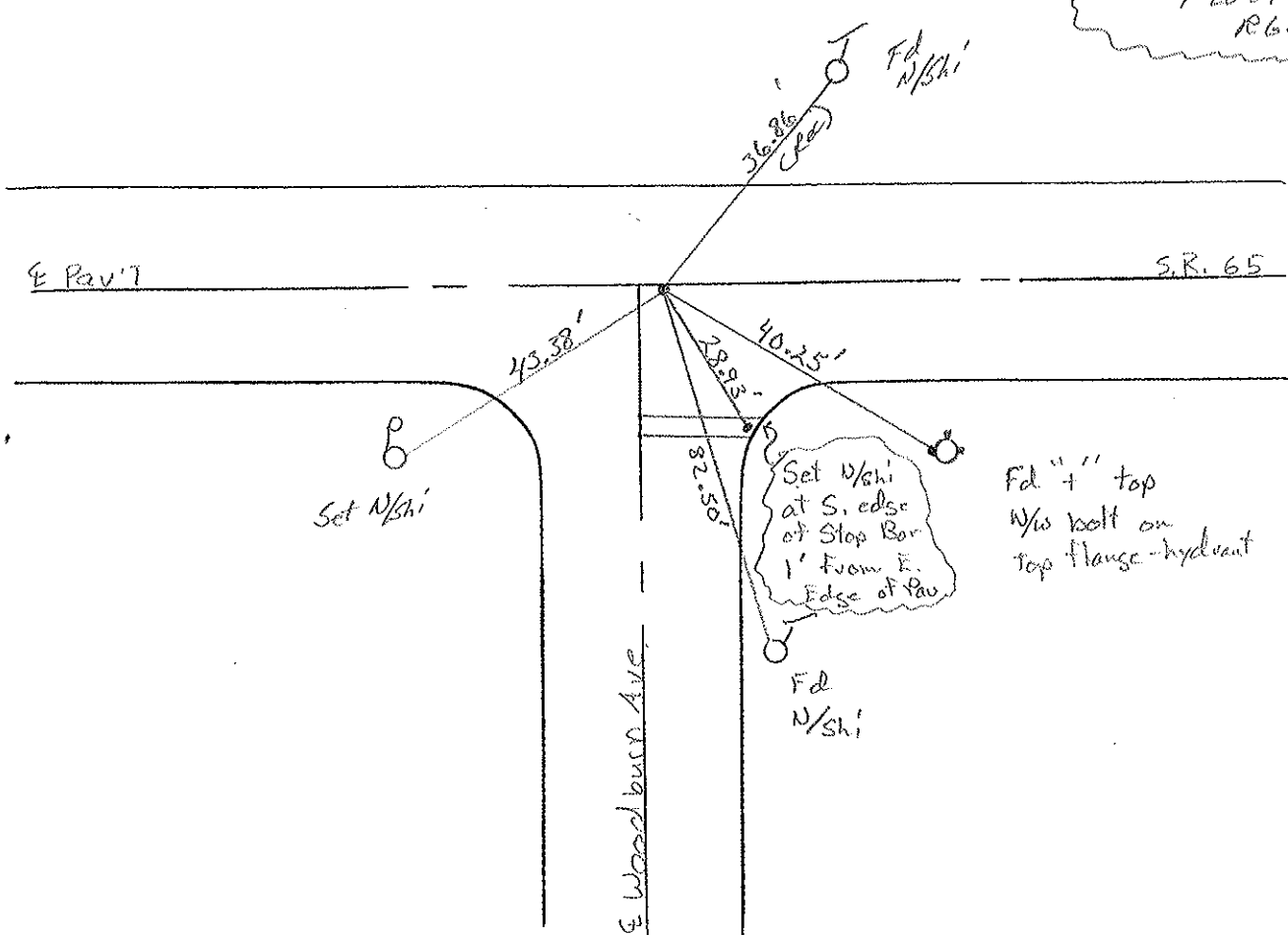
S.L.M. \_\_\_\_\_

79+34



Set PK/W  
11-21-89  
SWH

Set Mag/Wash  
9-20-04  
RGN



# O.D.O.T. DISTRICT 2 SURVEY OFFICE

PERSONNEL \_\_\_\_\_

REFERENCE NO. 3-C

SHEET 10 OF 12

NOTES HOFFMAN

H.C. LOEHRKE

R.C. \_\_\_\_\_

DATE 9-11-89

WEATHER CLEAR

TEMP. 72°

ROUTE SR 65

COUNTY WOOD

TOWNSHIP GRAND RAPIDS

SECTION 8

T.S.N.R. 9 E

TYPE MONUMENT SMALL R.R. SPICKE

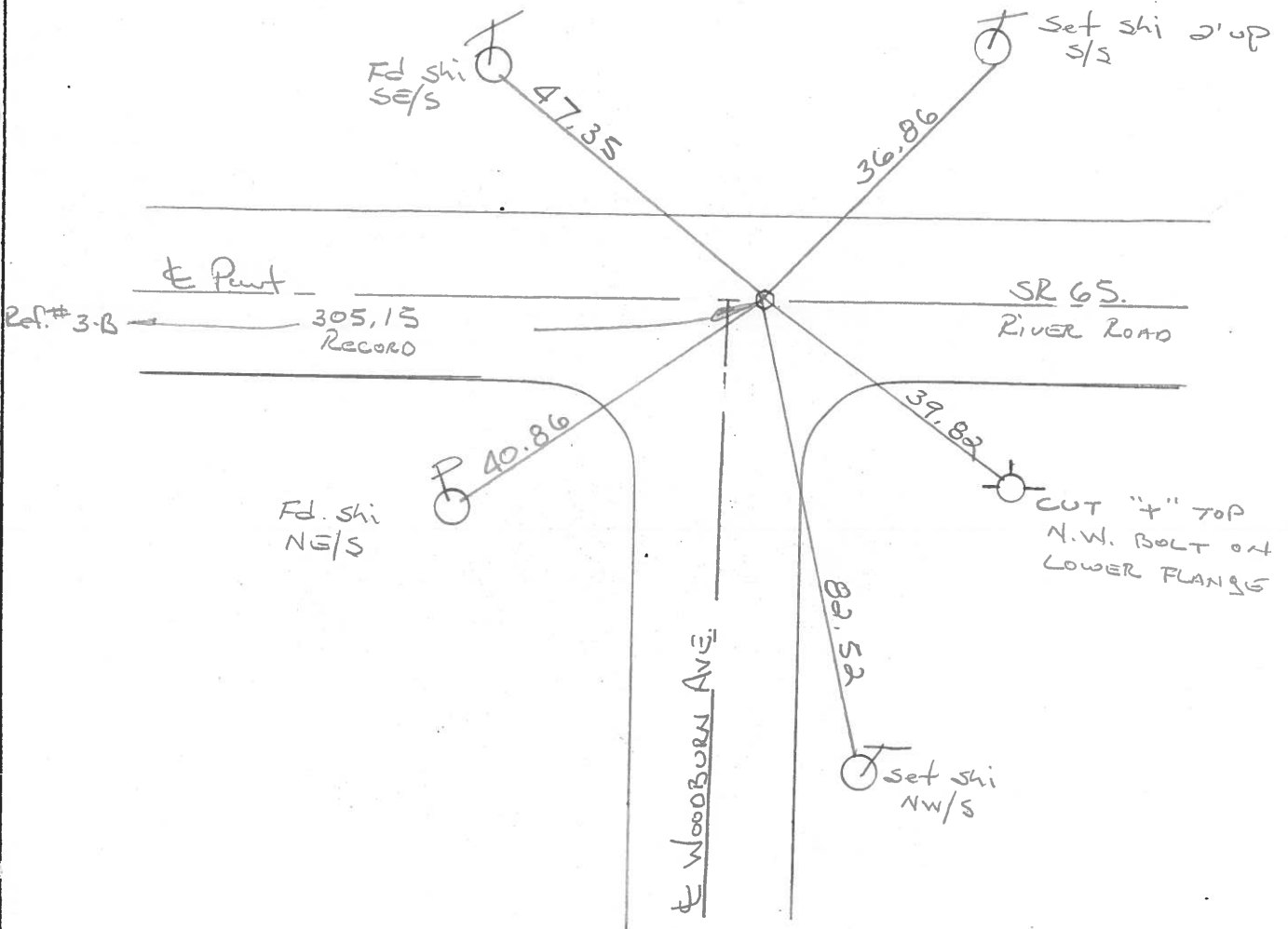
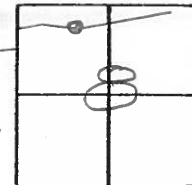
~~ON SURFACE - BELOW~~ 1 1/2"

~~LEFT - & PAV'T. - RIGHT~~ YES

10.3 TO Lt. EDGE PAVEMENT 1.8' EAST of & Point South

S.L.M. 79+34

Set P.K./WASHER  
11-21-89  
SWH





PERSONNEL	TITLE	PERSONNEL	TITLE
BURNSIDE			
HOFFMAN			

COUNTY WOOD DATE 7-13-70

S. R. #65 WEATHER CLEAR

SEC. P.O. LINE E. TO KELLOGG RD. TEMP. +88°

DESCRIPTION POINTS FOUND BEFORE RE-SURFACING JOB NO. \_\_\_\_\_

