

O.D.O.T. DISTRICT 2 SURVEY OFFICE (USE ONLY)

PERSONNEL

REFERENCE NO. 7 GA

SHEET 36 OF 40

NOTES O'DONNELL

DATE 11/3/20

ROUTE SR 65

H.C. AUBLE

WEATHER SUNNY

COUNTY WOOD

R.C. O'DONNELL

TEMP. 40°

TOWNSHIP GRAND RAPIDS

DWG BY RHOADES

PID 95796

SECTION 4

T 5 N R 9 E

TYPE MONUMENT P.K./WASHER

ON SURFACE - BELOW ON

OFFSET \varnothing PAVEMENT 2.0' LT : RT

8.6' TO LT EDGE PAVEMENT

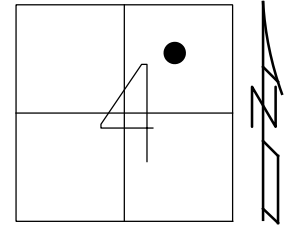
STATION: 187+61.18

HORZ.DATUM: NAD83 2011

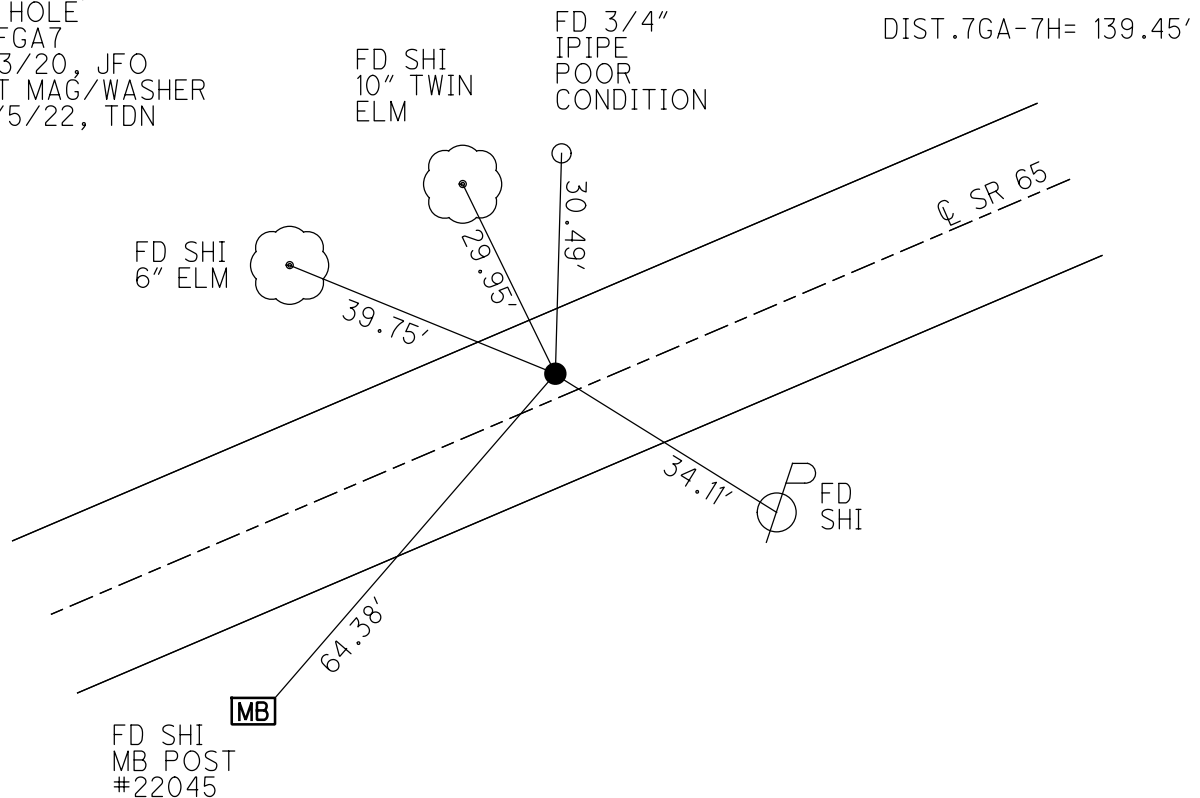
GEOID: NAVD88 2018

GRID: NORTHING: 643974.908

EASTING: 1605541.975



RECORD: P.C.
 FD R.R.SPIKE
 FD P.K./WASHER
 6/22/04, DCH
 SET MAG/WASHER
 9/17/04, RGN
 FD HOLE
 REFGA7
 11/3/20, JFO
 SET MAG/WASHER
 10/5/22, TDN



O.D.O.T. DISTRICT 2 SURVEY OFFICE

PERSONNEL

REFERENCE NO. 74

SHEET 28 OF 49

NOTES Nuhter

H.C. Homan

R.C. Hooker

DATE 6-22-04

WEATHER Sun.

TEMP. 78°

ROUTE S.R. 65

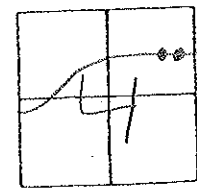
COUNTY Wood

TOWNSHIP Grand Rapids

SECTION 4

T5 N R 9 E

TYPE MONUMENT Pts. (A) + (B) PK/W's
 ON SURFACE - BELOW (A) - 0.2 below (B) - surface
~~LEFT - (A) - 7.4' Lt. (B) - 2.0' Lt.~~
RIGHT (A) - 7.4' Lt. (B) - 2.0' Lt.
TO Lt. EDGE PAVEMENT
 S.L.M. (A) - 187+80 (B) - 189+20



Record! 1923-1924 Plans

P.I. = 88+76.9

$\Delta = 11^{\circ}-08' RT$

$D = 3^{\circ}-30'$

$R = 1637.28$

$T = 159.68$

$L = 315.14$

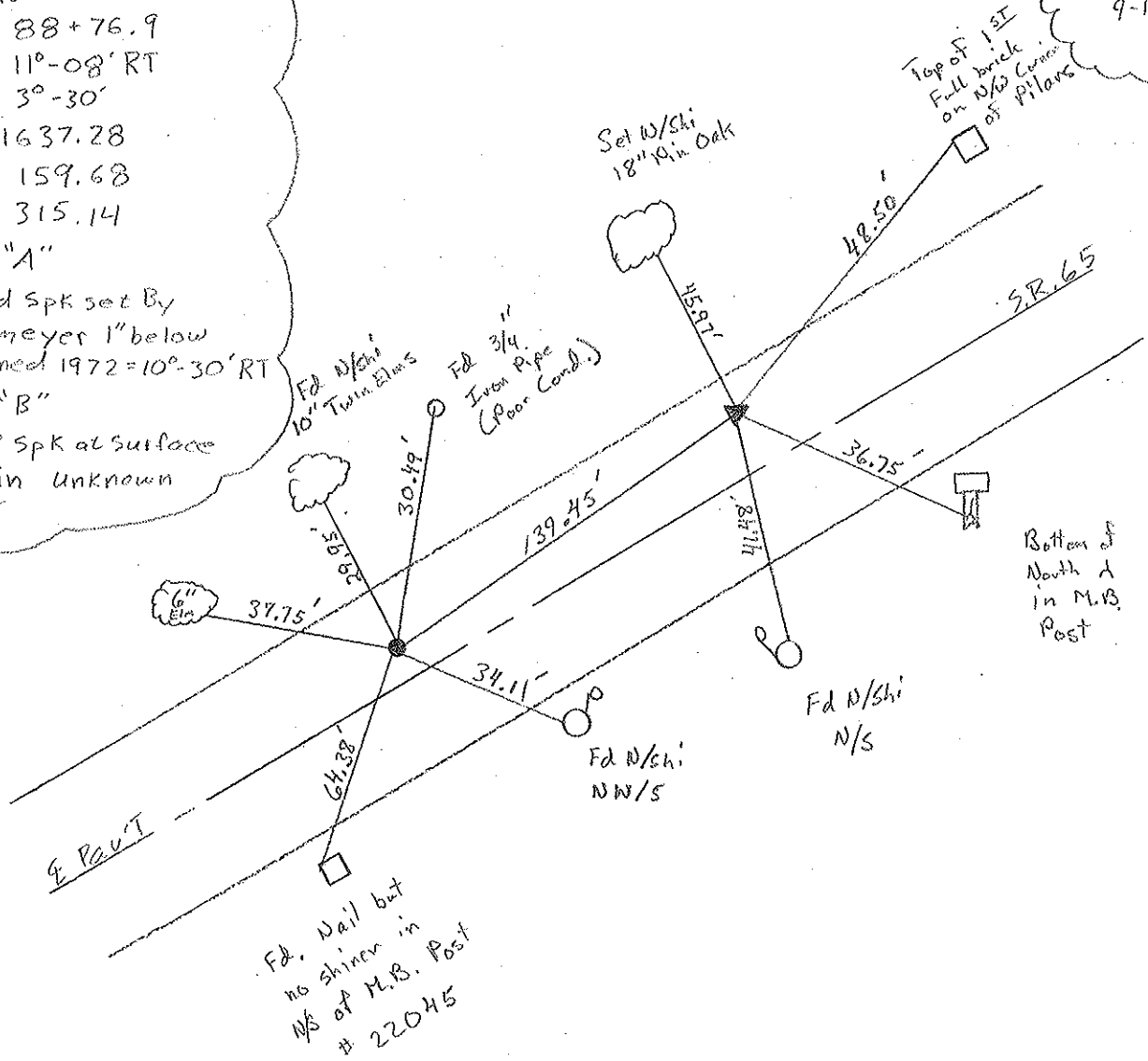
Point "A"

P.I. Fd Spk set By
 Poggemeyer 1" below
 Δ Tuned 1972 = $10^{\circ}-30' RT$

Point "B"

Fd RR Spk at surface
 origin Unknown
 P.O.T

Set Mag/W's
 9-17-04
 RGN



O.D.O.T. DISTRICT 2 SURVEY OFFICE

PERSONNEL

REFERENCE NO. 7 H

SHEET 13 OF 34

NOTES BARNHISEL
 H.C. CURTIS
 R.C. VAN DUSEN
Loehrke
Rometo

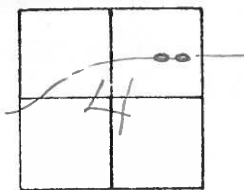
DATE 4-21-92
 WEATHER cloudy
 TEMP. +65°

ROUTE SR 65
 COUNTY WOOD
 TOWNSHIP GRAND RAPIDS
 SECTION 4
 T S N R 9 E

TYPE MONUMENT PT "A" & PT "B" ~ P.K. & WASHERS
 ON SURFACE - BELOW yes ~ yes
 LEFT- & PAV'T. - RIGHT 7.1 ~ 1.1
A ~ 2.5
B ~ 8.2
TO LT EDGE PAVEMENT
 S.L.M. PT "A" 189+13

Reset

5-4-92
 C.L.

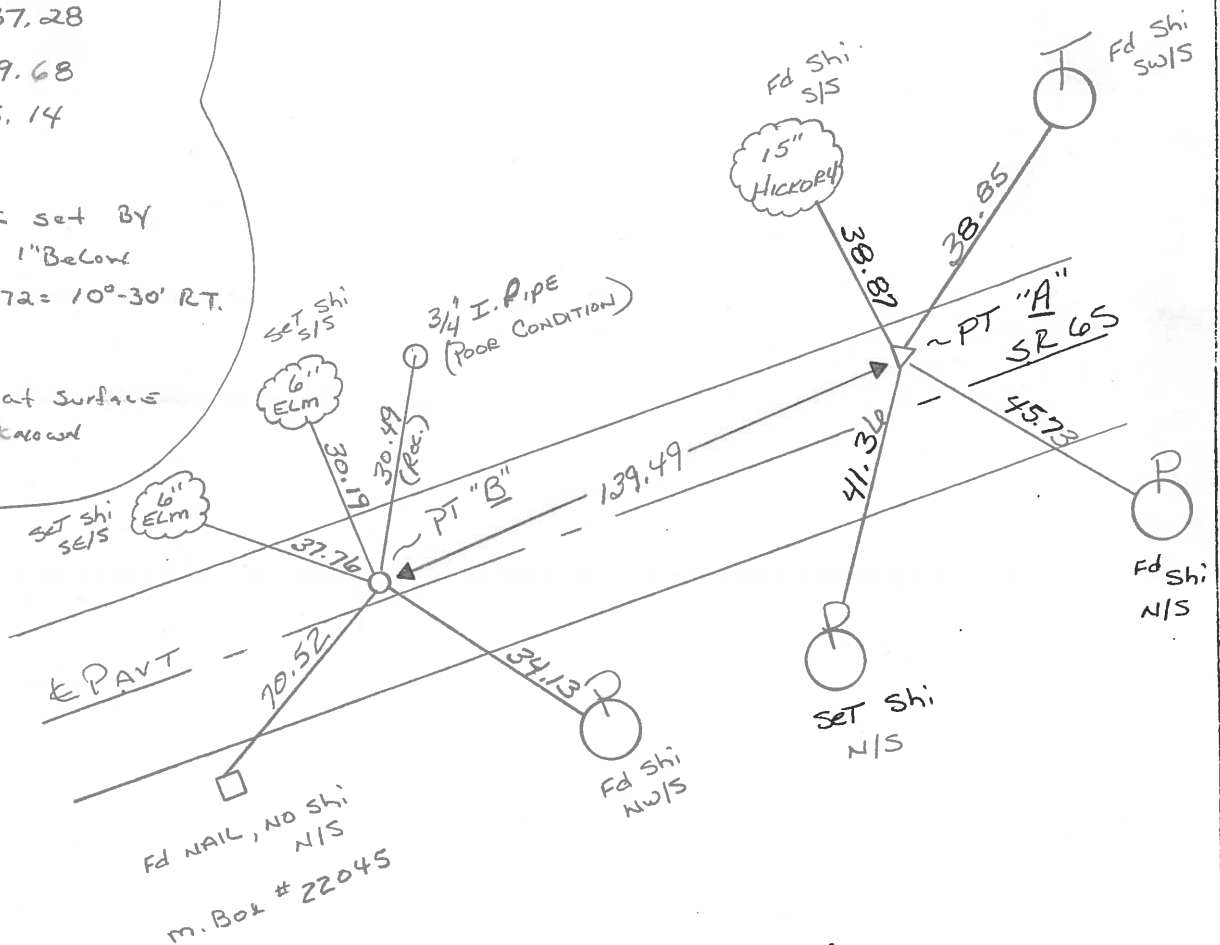


RECORDS: 1923-1924 PLANS

P.I. 88+76.9
 $\Delta = 11^\circ 08' RT.$
 $D = 3^\circ - 30'$
 $R = 1637.28$
 $T = 159.68$
 $L = 315.14$

POINT "A"
 P.I. Fd. SPK set BY
 Poggemeyer 1" Below
 Δ TURNED 1972 = $10^\circ - 30' RT.$

POINT "B"
 Fd R.R. SPK at SURFACE
 ORIGINAL UNKNOWN
 P.O.T.



O.D.O.T. DISTRICT 2 SURVEY OFFICE

SHEET 21 OF

County Wood S.R. 65

Township Grand Rapids

Section 4

Q1N, R9E

Personnel Hoffman

Loehrke

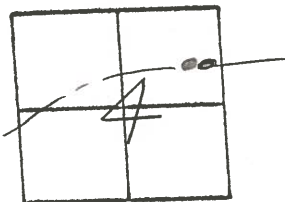
Householder

7-H

Date 6-9-82
12-10-81

Weather clear

Temp. 30°



Pt. "A" Fd. P.I. Spk - set by Possemeyer
1" below surface; Δ = 10°-30' Rt -1972
6.6' Lt. of & PAUT.
3.6' N. EP.
16.2' S. EP.

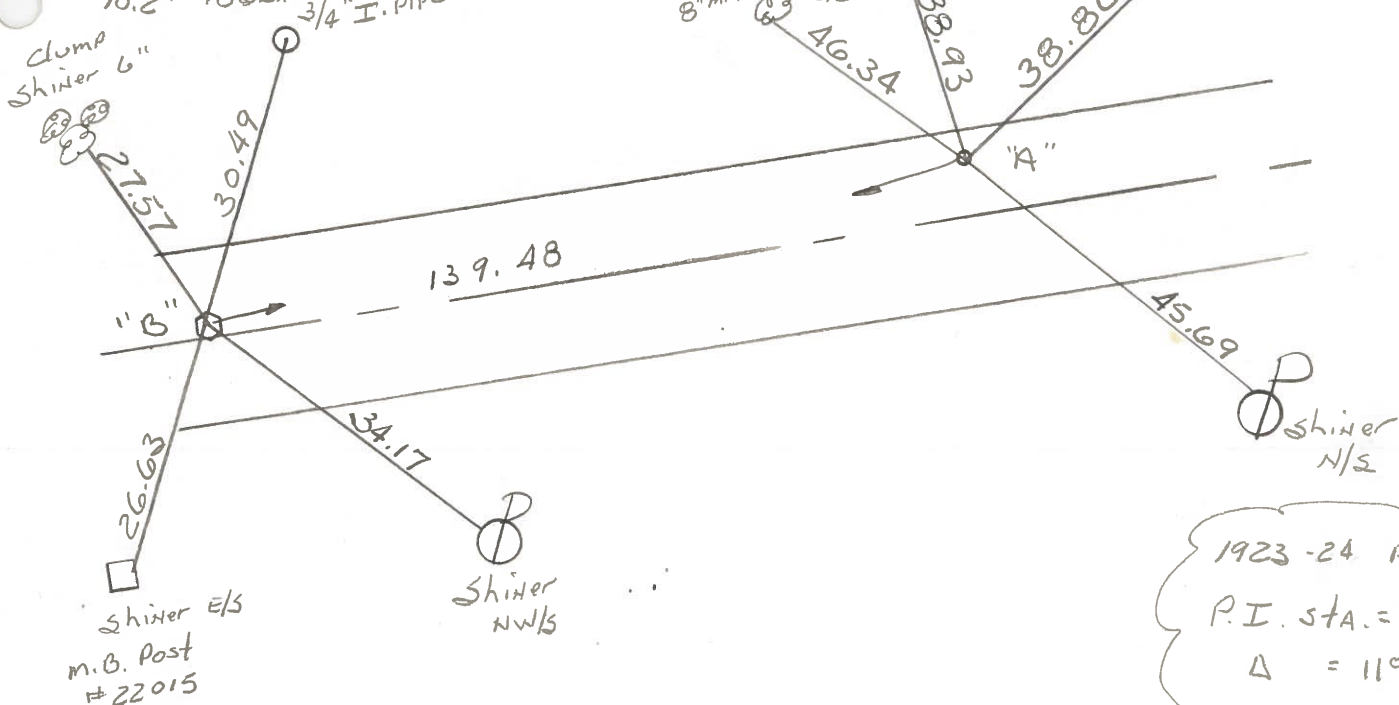
Project sta ± 189+23

Pt. "B" original unknown - Fd. r.e. spk @ surface ~ Project sta ± 187+85
P.O.T.
0.8' Lt. of &
9.3' to N. EP.
10.2' to S. EP.

Clump
Shiner 6"
3/4" I. Pipe

8" maple Shiners
45
46.34
15" Hickory
38.93

Shiner
Suts



1923-24 PLANS

P.I. STA. = 88+76.

Δ = 11°-08'

D = 3°-30'

R = 1637.28

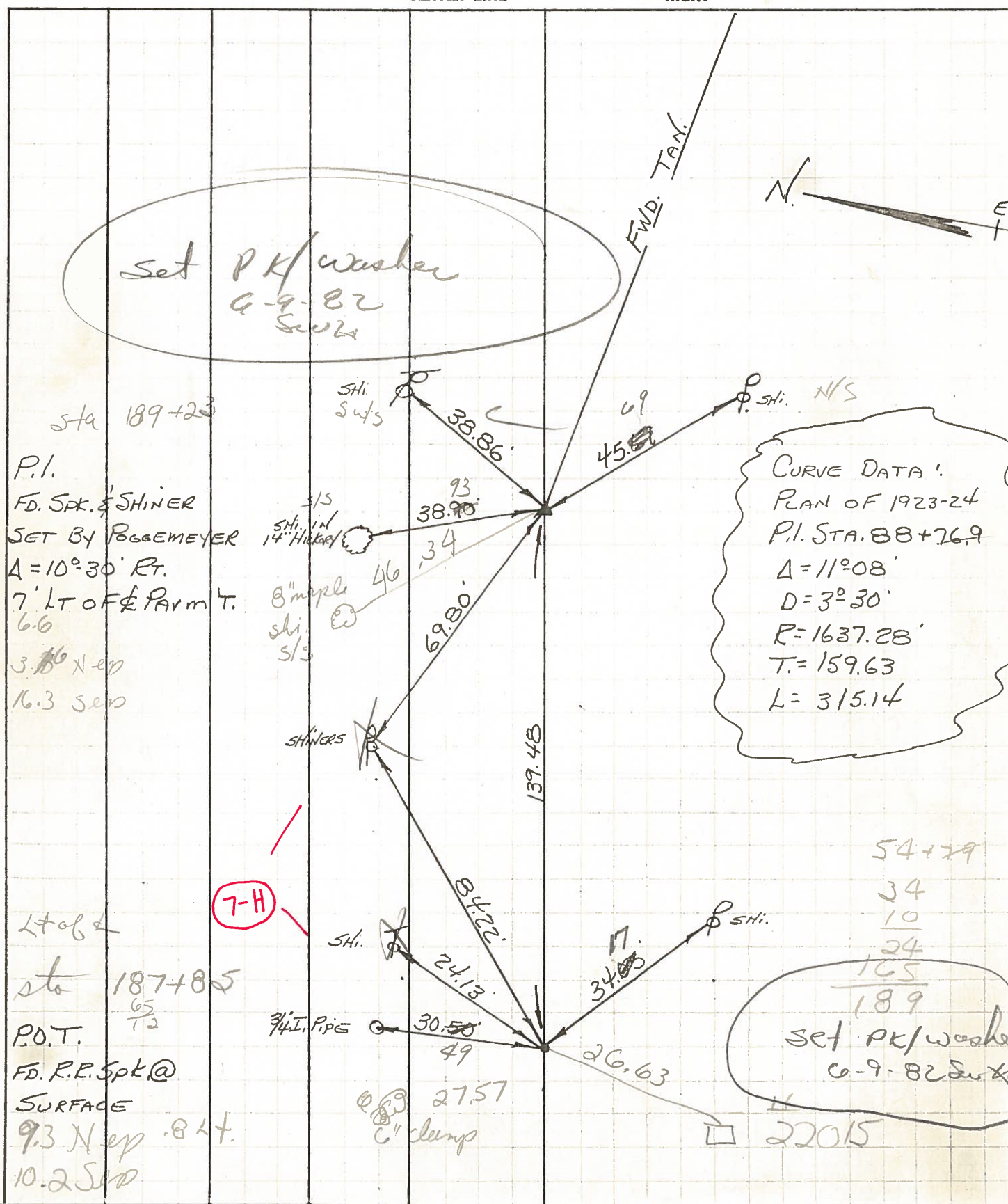
T = 159.63

L = 315.14

PERSONNEL TITLE PERSONNEL TITLE
BURNSIDE _____
SMITH _____
BOWERS _____

COUNTY WOOD DATE 10-6-72
 S. R. 65 WEATHER CLOUDY
 SEC. GRAND RAPIDS TWP TEMP. +58°

DESCRIPTION CONTROL TIES JOB NO. _____



set PK/washer
 6-9-82
 SWS

Sta 189+23
 P.I.
 FD. SPT. & SHINER
 SET BY BOGEMEYER
 $\Delta = 10^\circ 30'$ RT.
 7' LT OF E. PARM T.
 6.6
 3.16 N-ep
 16.3 S-ep

CURVE DATA:
 PLAN OF 1923-24
 P.I. STA. 88+76.9
 $\Delta = 11^\circ 08'$
 $D = 3^\circ 30'$
 $R = 1637.28'$
 $T = 159.63$
 $L = 315.14$

Sta 187+85
 P.O.T.
 FD. R.E. SPT @
 SURFACE
 9.3 N-ep 8 ft.
 10.2 S-ep

54+79
 34
 10
 24
 165
 189
 set PK/washer
 6-9-82 SWS
 22015

7-H

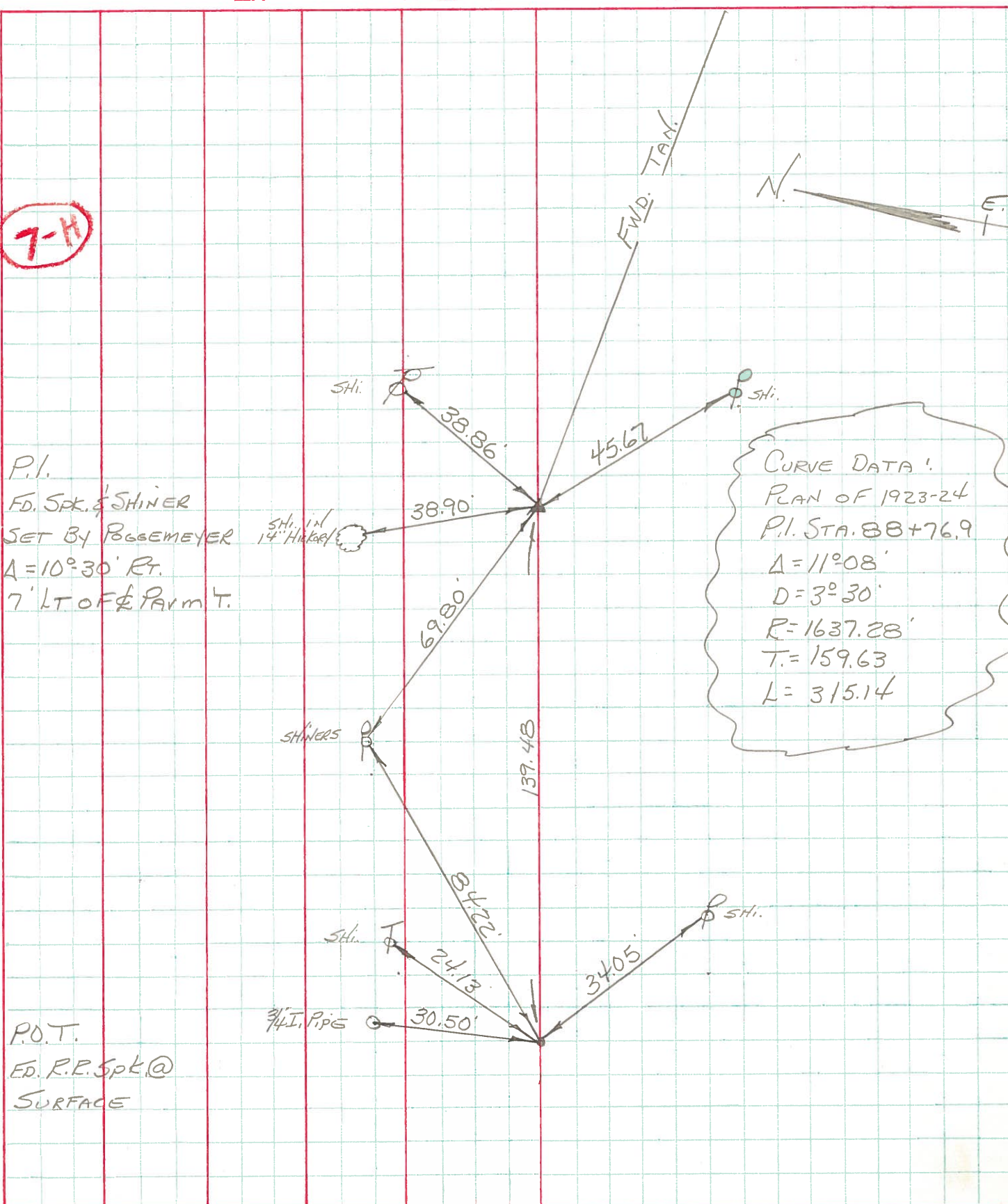
PERSONNEL TITLE PERSONNEL TITLE
BURNSIDE _____
SMITH _____
BOWERS _____

COUNTY Wood DATE 10-6-72

S. R. 65 WEATHER Cloudy

SEC. GRAND RAPIDS TWP TEMP. +58°

DESCRIPTION CONTROL TIES JOB NO. _____



P.I.
 FD. SPK. & SHINER
 SET BY BOSEMAYER
 $A = 10^\circ 30' \text{ Rt.}$
 7' LT OF & PARM T.

P.O.T.
 ED. R.E. SPK. @
 SURFACE