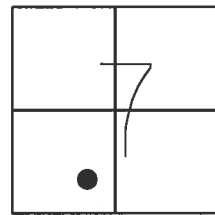


O.D.O.T. DISTRICT 2 SURVEY OFFICE (USE ONLY)

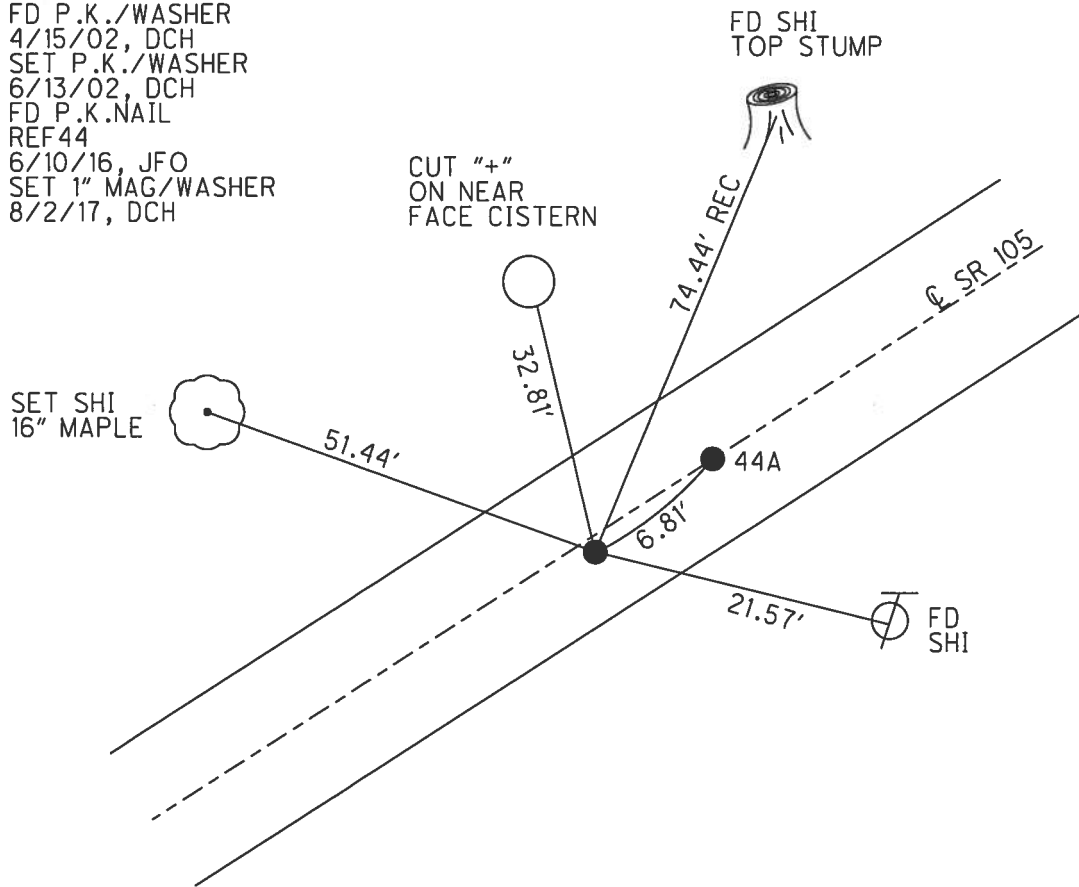
PERSONNEL \_\_\_\_\_ REFERENCE NO. 44 SHEET 50 OF 54  
 NOTES RHOADES DATE 9/13/16 ROUTE SR 105  
 H.C. O'DONNELL WEATHER SUNNY COUNTY WOOD  
 R.C. TODD TEMP. 76° TOWNSHIP WEBSTER  
 SECTION 7  
 T 5 N R 11 E

TYPE MONUMENT P.K.NAIL  
 ON SURFACE - ~~BELOW~~ ON  
~~LEFT~~ - CL PAV'T - RIGHT 1'  
9.2' TO RT EDGE PAVEMENT  
 S.L.M. 293+96



GRID: NORTHING: 633437.845 EASTING: 1686644.804

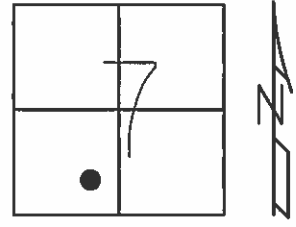
RECORD: P.I.  
 STA. 295+17.31  
 $\Delta = 1^\circ 05' 20''$  LT  
 FD P.K./WASHER  
 4/15/02, DCH  
 SET P.K./WASHER  
 6/13/02, DCH  
 FD P.K.NAIL  
 REF44  
 6/10/16, JFO  
 SET 1" MAG/WASHER  
 8/2/17, DCH



O.D.O.T. DISTRICT 2 SURVEY OFFICE (USE ONLY)

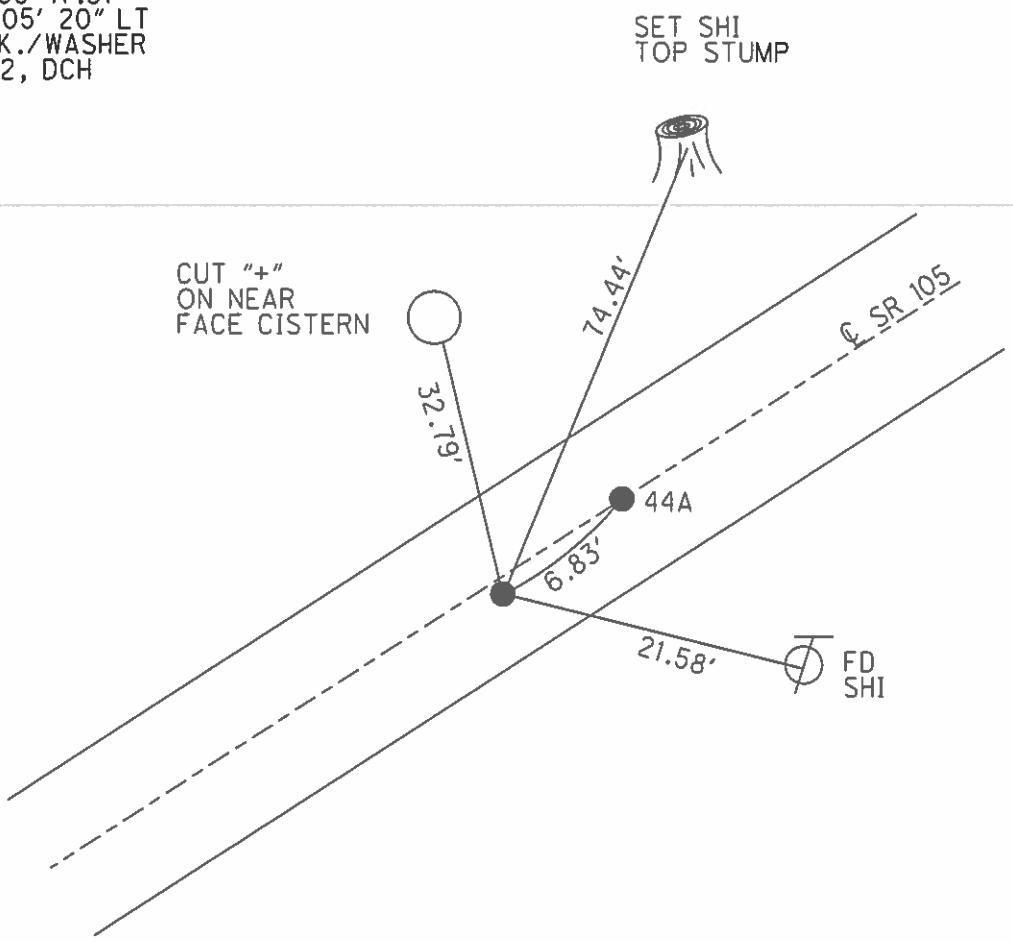
PERSONNEL \_\_\_\_\_ REFERENCE NO. 44 SHEET 50 OF 54  
 NOTES ROUSOS DATE 4/15/02 ROUTE SR 105  
 H.C. HOMAN WEATHER SUNNY COUNTY WOOD  
 R.C. BROWN TEMP. 74° TOWNSHIP WEBSTER  
 SECTION 7  
T 5 N R 11 E

TYPE MONUMENT P.K./WASHER  
 ON SURFACE - ~~BELOW~~ ON  
~~LEFT~~ - CL PAV'T - RIGHT 1'  
9.2' TO RT EDGE PAVEMENT  
 S.L.M. 293+96



GRID: NORTHING: \_\_\_\_\_ EASTING: \_\_\_\_\_

RECORD: P.I.  
 STA. 295+17.31  
 $\Delta = 1^\circ 05' 20''$  LT  
 SET P.K./WASHER  
 6/13/02, DCH



# O.D.O.T. DISTRICT 2 SURVEY OFFICE

PERSONNEL

REFERENCE NO. 44

SHEET 54 OF 57

NOTES LONG

H.C. VANDUSEN

R.C. BARNHISEL

DATE 8-27-91

WEATHER SUNNY

TEMP. 88°

ROUTE 105

COUNTY WOOD

TOWNSHIP WEBSTER

SECTION 7

T5 N R 11 E

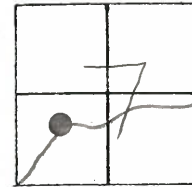
TYPE MONUMENT P.K. / WASHER

ON SURFACE - ~~BELOW~~ YES

~~LEFT - & PAV'T. - RIGHT~~ 1.0'

9.2' TO RT EDGE PAVEMENT

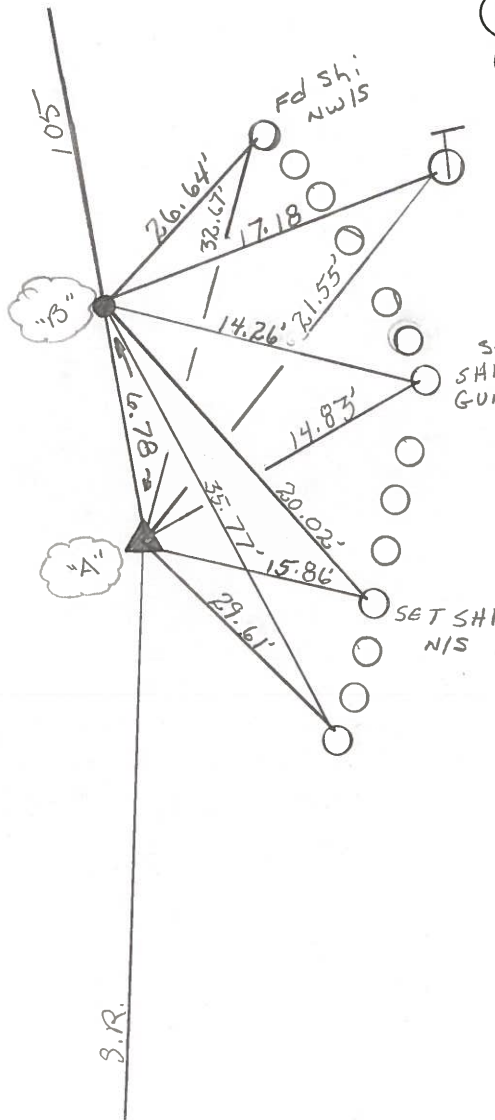
S.L.M. 293 + 96 "A"



SET PK & WASHER  
 4-9-92  
 BVD

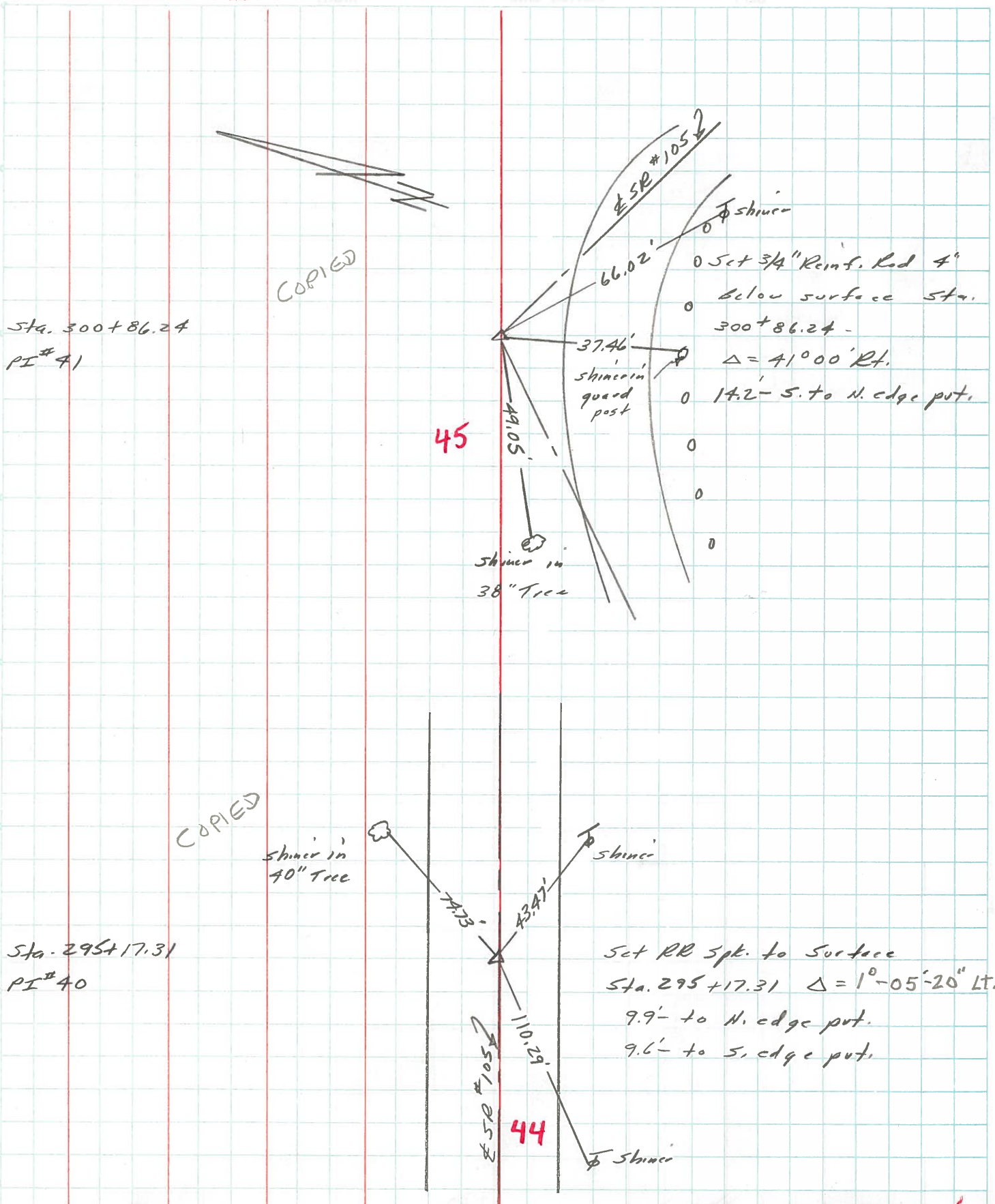
Record  
 P.I. # 40  
 295 + 17.31  
 $\Delta = 1^{\circ} - 05' - 20''$  LT.

A = 44  
B = 44A



PERSONNEL	TITLE	PERSONNEL	TITLE	COUNTY	DATE
Stone		Brannen		Wood	16 July 73
Michalek				#105	WEATHER Mild
Dennis				SEC. Webster Twp.	TEMP. 79°
Curtis					

DESCRIPTION References to Control Points JOB NO. \_\_\_\_\_



Q.D.O.T. DISTRICT 2 SURVEY OFFICE

SHEET \_\_\_\_\_ OF \_\_\_\_\_

County WOOD S.R. 105

Date 4-23

Township WEBSTER

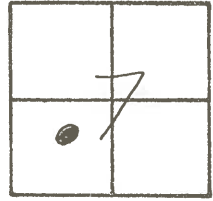
Weather CLOUDY

Section 7

Temp. +45

T N, R E

Personnel HOFFMAN



#44

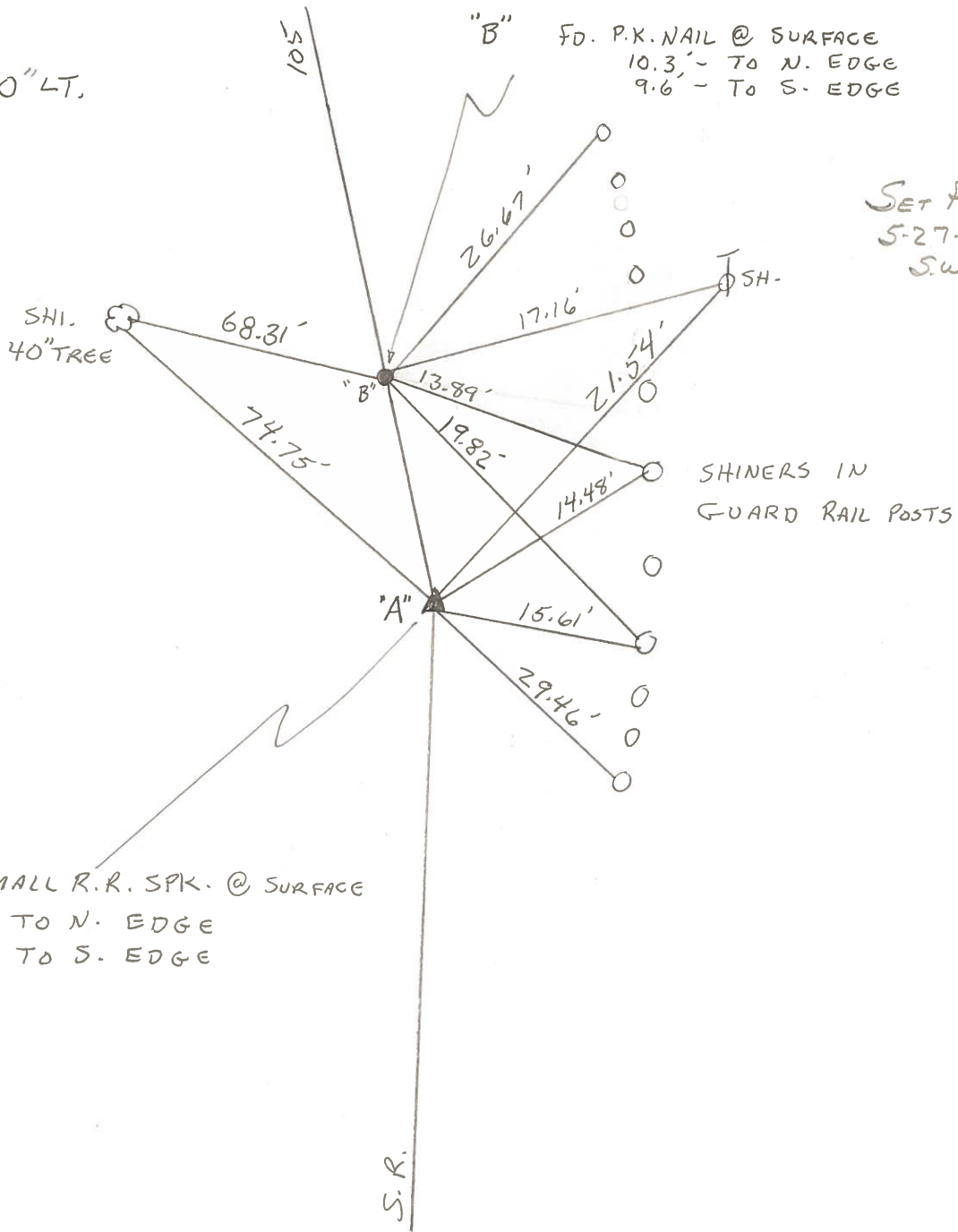
HOUSEHOLDER  
LOEHRKE

P.I. #40

295+17.31

"A"  $\Delta = 1^{\circ} - 05' - 20''$  LT.

A = 44  
B = 44A



"B" FD. P.K. NAIL @ SURFACE  
10.3' - TO N. EDGE  
9.6' - TO S. EDGE

SET P.K./WASHER  
5-27-82  
S.W.H.

SHINERS IN  
GUARD RAIL POSTS

FD. SMALL R.R. SPK. @ SURFACE  
10.3 - TO N. EDGE  
9.6 - TO S. EDGE

S.R.