

O.D.O.T. DISTRICT 2 SURVEY OFFICE (USE ONLY)

PERSONNEL

REFERENCE NO. 1

SHEET 1 OF 15

NOTES RHOADES DATE 9/7/18  
 H.C. O'DONNELL WEATHER CLOUDY  
 R.C. RHOADES TEMP. 69°

ROUTE SR 281  
 COUNTY WOO  
 TOWNSHIP MILTON  
 SECTION 19  
 T 4 N R 9 E

DWG BY NIESE PID CHIP\_2

TYPE MONUMENT MAG/WASHER

ON SURFACE - BELOW ON

OFFSET  $\varnothing$  PAVEMENT - LT : RT

- TO - EDGE PAVEMENT

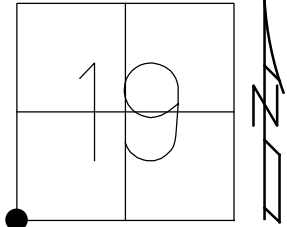
STATION: 0+00

HORZ.DATUM: NAD83(2011)

GEOID: 2012A

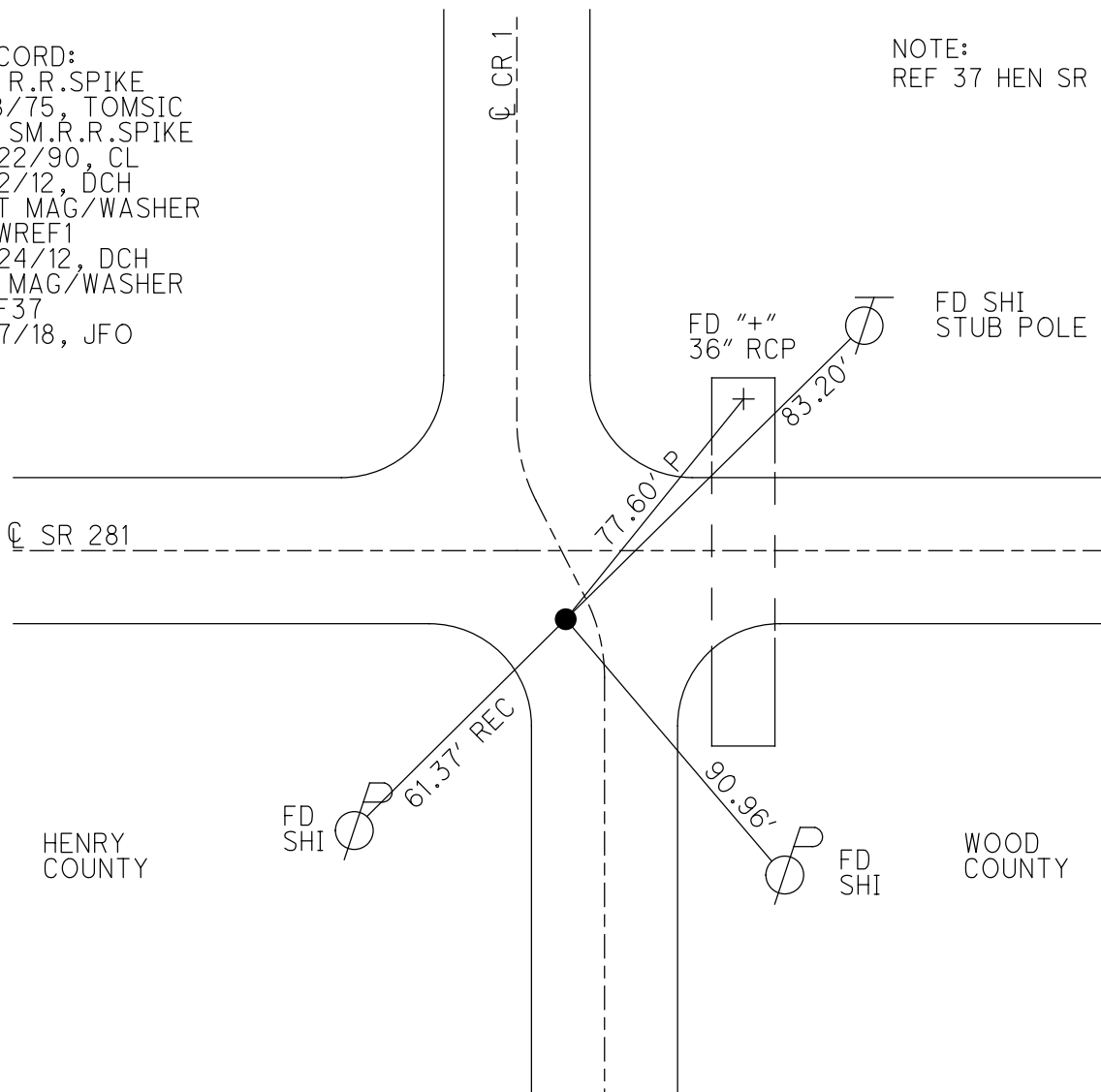
GRID: NORTHING: 592312.219

EASTING: 1588509.764



RECORD:  
 FD R.R.SPIKE  
 1/8/75, TOMSIC  
 FD SM.R.R.SPIKE  
 5/22/90, CL  
 7/2/12, DCH  
 SET MAG/WASHER  
 NEWREF1  
 9/24/12, DCH  
 FD MAG/WASHER  
 REF37  
 9/7/18, JFO

NOTE:  
 REF 37 HEN SR 281



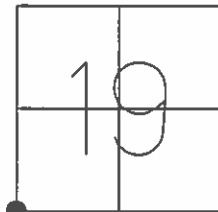
HENRY  
 COUNTY

WOOD  
 COUNTY

O.D.O.T. DISTRICT 2 SURVEY OFFICE (USE ONLY)

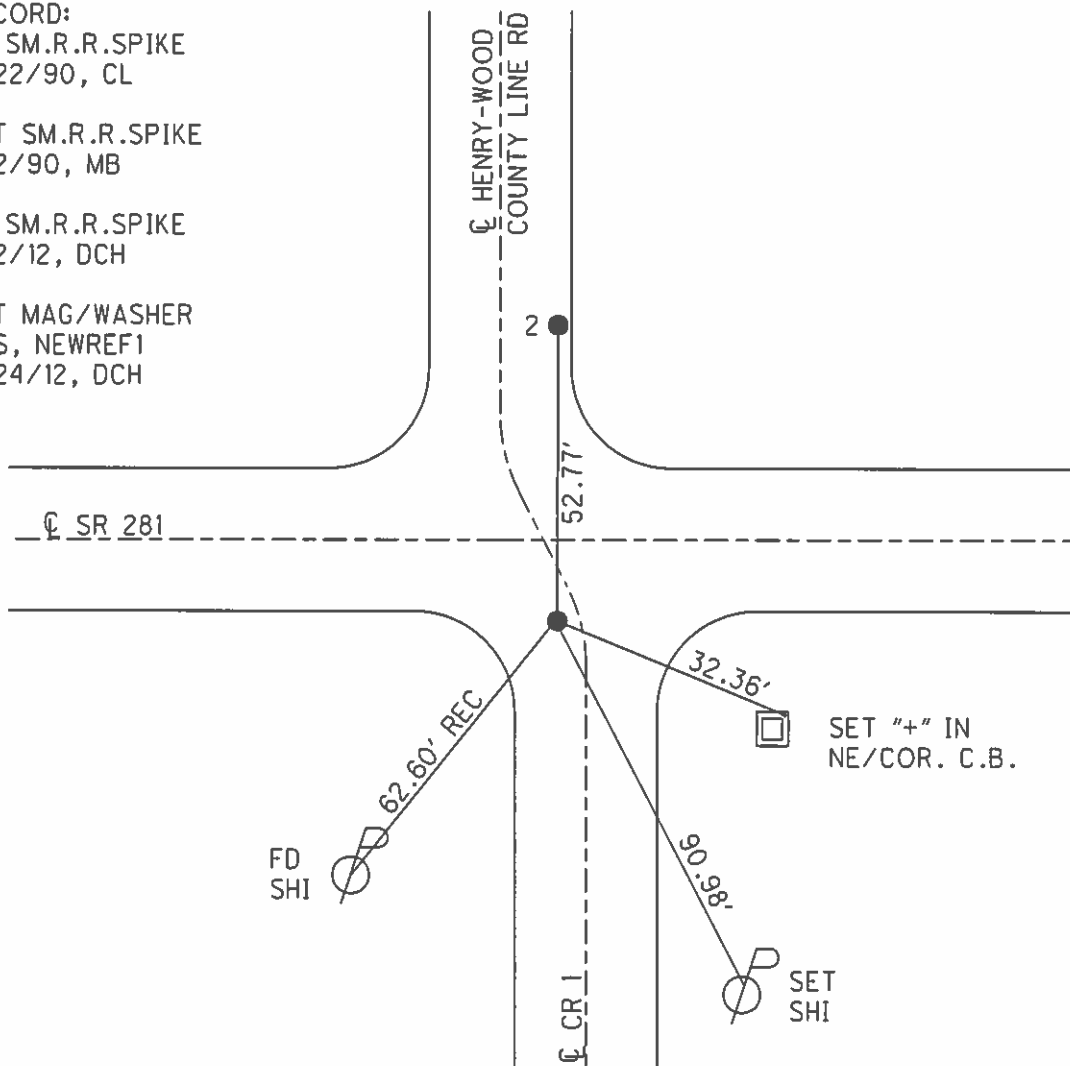
PERSONNEL \_\_\_\_\_ REFERENCE NO. 1 SHEET 1 OF 15  
 NOTES HOMAN DATE 7/2/12 ROUTE SR 281  
 H.C. ROUSOS WEATHER SUNNY COUNTY WOOD  
 R.C. HOMAN TEMP. 75° TOWNSHIP MILTON  
 \_\_\_\_\_ SECTION 19  
 \_\_\_\_\_ T 4 N R 9 E

TYPE MONUMENT SM.R.R.SPIKE  
 ON SURFACE - ~~BELOW~~ ON  
~~LEFT~~ - CL PAV'T - RIGHT 10.3'  
- TO - EDGE PAVEMENT (ON W/EP SOUTH)  
 S.L.M. 0+00



GRID: NORTHING: 592312.250 EASTING: 1588509.673

RECORD:  
 FD SM.R.R.SPIKE  
 5/22/90, CL  
  
 SET SM.R.R.SPIKE  
 7/2/90, MB  
  
 FD SM.R.R.SPIKE  
 7/2/12, DCH  
  
 SET MAG/WASHER  
 GPS, NEWREF1  
 9/24/12, DCH



# O.D.O.T. DISTRICT 2 SURVEY OFFICE

PERSONNEL

REFERENCE NO. 112

SHEET      OF     

NOTES BARNHISEL

H.C. Loehke

DATE 5-22-90

ROUTE 281

R.C. HOFFMAN

WEATHER WINDY

COUNTY Wood

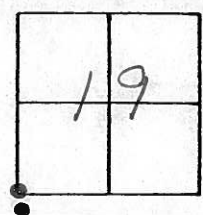
TEMP. +62°

TOWNSHIP MILTON

SECTION 19

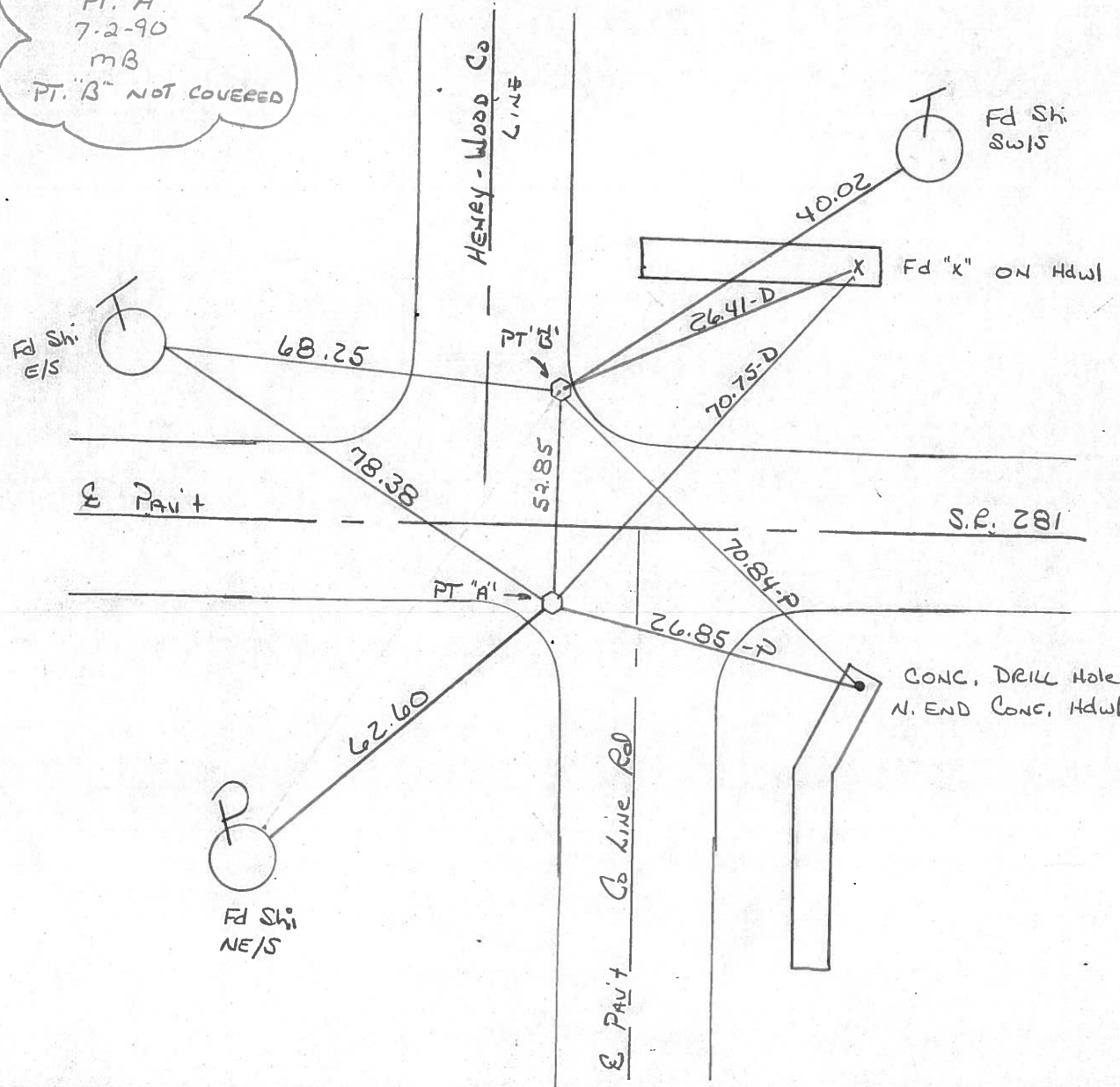
T 4 N R 9 E

TYPE MONUMENT PT "A" Sm RR Spk PT "B" Lg RR Spk  
 ON SURFACE - ~~BELOW~~ yes yes  
 LEFT - C PAV'T. - RIGHT 10.3 RT 42.6 LT &  
- TO - EDGE PAVEMENT



S.L.M. 0+00 PT "A" ON W. Edge Pav't South  
 PT "B" ON E. Edge Pav't North

Set Sm RR Spk  
 PT. "A"  
 7-2-90  
 mB  
 PT. "B" NOT COVERED



O.D.O.T. DISTRICT 2 SURVEY OFFICE

SHEET

OF

County Wood S.R. 281

Date 5-19-81 8-24-81

Township MILTON

Weather cloudy - windy

Section 19

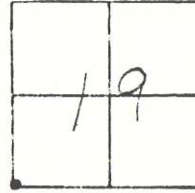
Temp. 55° 75°

T4N, R9E

Personnel S. Hoffmann

C. Koehrke

J. Householder

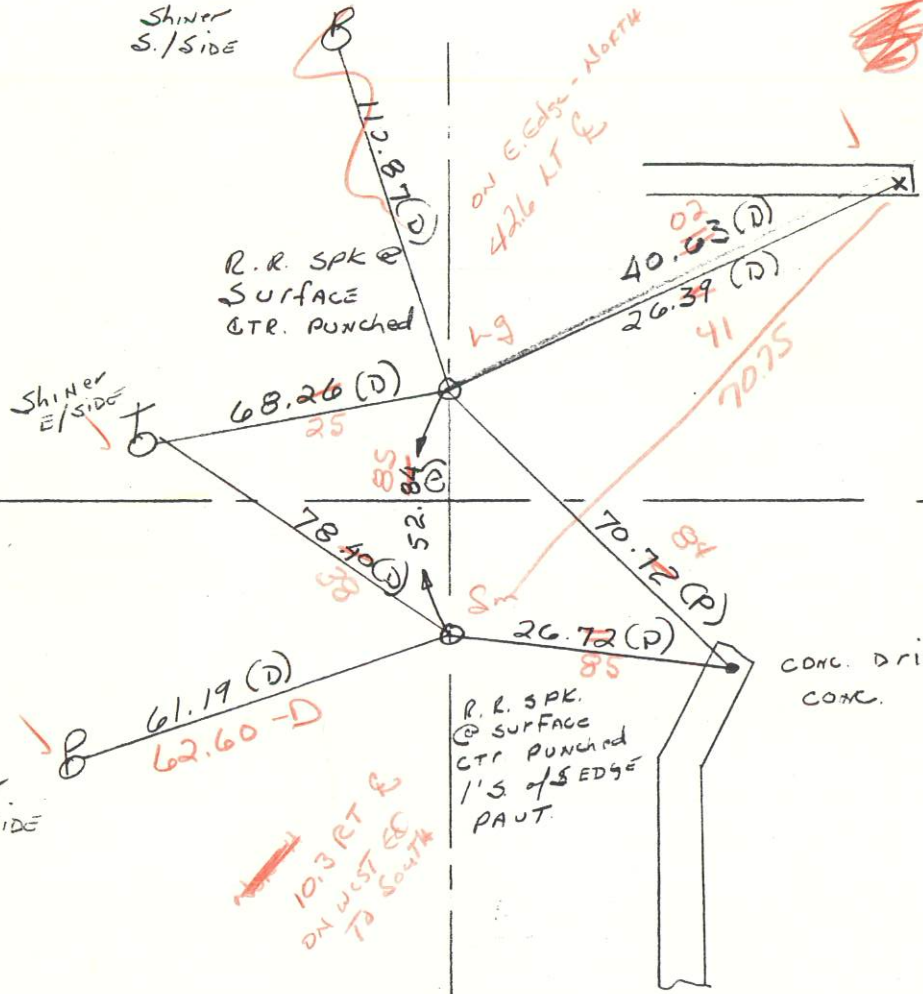


#2

Shiner S./SIDE

Shiner S./SIDE

S.R. 281



#1

HENRY CO  
WOOD CO

SET SMALL R.R. SPK.

10.5 S. OF & PAUT AS 281

O.D.O.T. DISTRICT 2 SURVEY OFFICE

SHEET OF

County Wood S.R. 281

Township MILTON

Section 19

T4N, R9E

Personnel S. Hoffmann

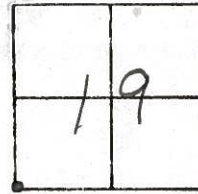
G. Loehrke

J. Householder

Date 5-19-81 8-24-81

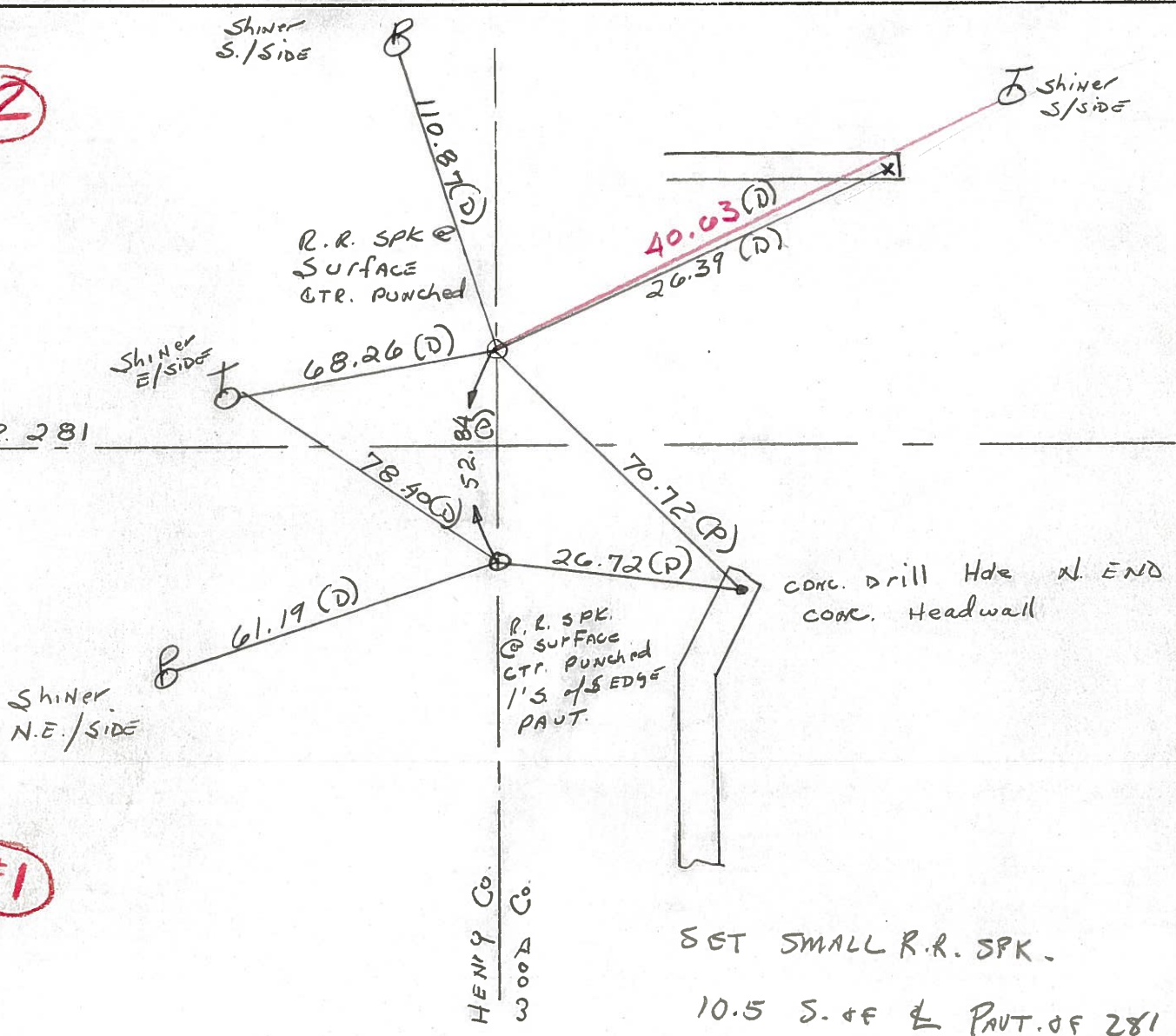
Weather cloudy - windy

Temp. 55° 75°



#2

S.R. 281



#1



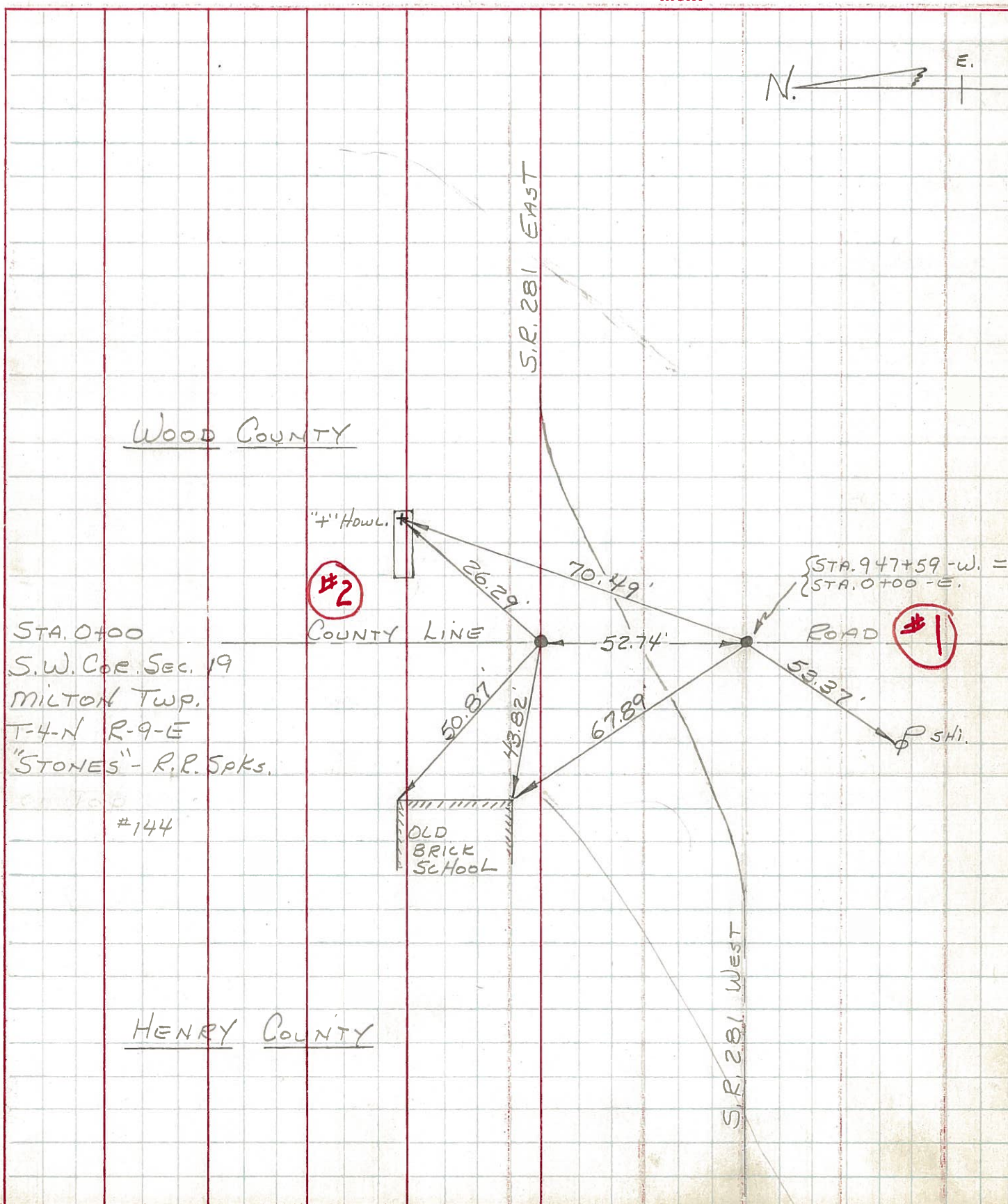
NOTE:  
RE-COPIED  
1-19-70

PERSONNEL TITLE PERSONNEL TITLE COUNTY WOOD DATE OK-11-18-7

CK. BY BURNSIDE S. R. # 281 WEATHER

HOFFMAN SEC. 19 TEMP.

DESCRIPTION FROM HENRY-WOOD Co. LINE ~ EAST ~ JOB NO.





PERSONNEL TITLE PERSONNEL TITLE

COUNTY Wood

DATE OK 12-2-57

# 281

WEATHER 11-3-60 Knaps

SEC. D, E, F & G.

TEMP. 2-28-64

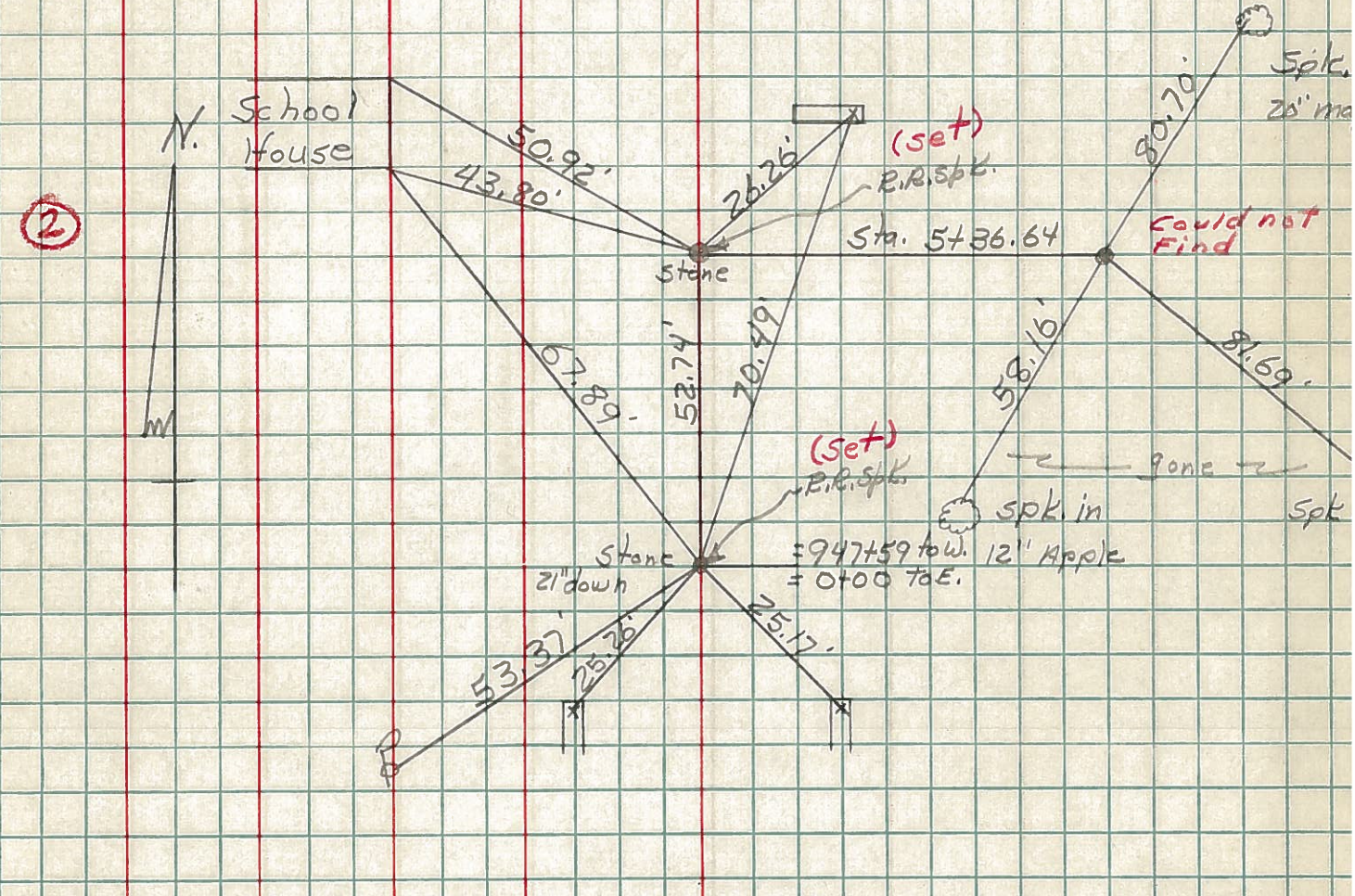
DESCRIPTION From Henry-Wood Co. line East.

JOB NO.

LEFT CENTER LINE RIGHT

|                          |                        |       |      |
|--------------------------|------------------------|-------|------|
| Sta. 0+00                | X on N. end W. Hdwl.   | S.W.  | 76.  |
| S.W. cor. sec. 19 Milton | S. bolt of pump        | N.W.  | 61.9 |
| Twp. Wood & Henry Co.    | Bottom brick N.E. Cor  | brick | 50.0 |
| Lines. Stone             |                        | W.    | 50.0 |
|                          | Bottom brick S.E. Cor. | brick | 50.0 |
|                          |                        | W.    | 43.0 |

① #144



|                        |                   |      |
|------------------------|-------------------|------|
| Sta. 26+00.8 (old)     | Shiner in T.P.    | 28.0 |
| Did not find (12-2-57) | Spike in L.P.     | 92.0 |
|                        | Shiner in Cor. P. | 28.6 |

③ #145

Set Shiner on A 26+00.8 from West  
 " " " " " " East

Note - overlap of 7.35'

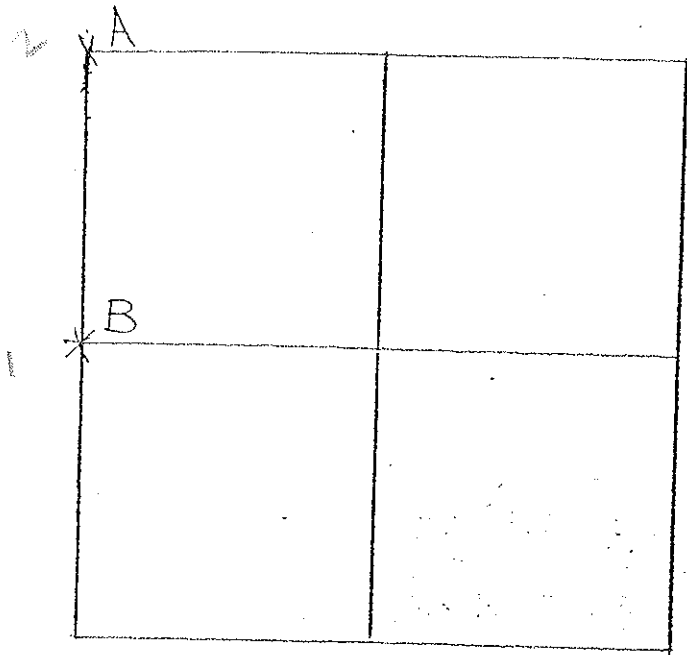


COUNTY HENRY WOOD

SHEET 1 OF 1  
T-4-N , R-9-E

TOWNSHIP MILTON

SECTION 30



8-6-79 R.W, J.J, G.M.  
 A- FOUND RECORDED BOAT SPIKE OVER  
 SMALL STONE OVER TRIVE STONE (6" X  
 11" X 20") 11" BELOW ROAD SURFACE.  
 REMOVED BOAT SPIKE AND SMALL  
 STONE. PLACED CENTER PUNCHED  
 RAILROAD SPIKE ON SURFACE  
 OVER HIGH POINT OF STONE.  
 P.K.'S 6' N. & W.

STONE IS ON EAST EDGE OF 16' PAVEMENT.  
 110.80' N.N.W. TO SHINNER  $\frac{5}{8}$ " P  
 26.36' E.N.E. TO "EAST END STONE HEADWALL  
 40.63' E.N.E. TO SHINNER  $\frac{5}{8}$ " J  
 68.21' W.S.W. TO SHINNER  $\frac{5}{8}$ " J  
 70.65' E.S.E. TO DRILL HOLE, N. END CONC. HEADWALL (PLUMBED)  
 52.80' SOUTH TO N.E. COR., SEC. 25; RICHFIELD TWP. HENRY CO.

10-18-79 R.W, C.S.

B- FOUND STONE (7" X 9" X 12") 4" BELOW GRADE ON EAST DITCH BANK.  
 PLACED  $\frac{5}{8}$ " X 30" LG. IRON PIN ON  $\frac{5}{8}$ " STONE. TOP OF IRON PIN OVER  
 HIGH POINT OF STONE AND ON EAST LINE OF SEC. 25; RICHFIELD TWP,  
 HENRY CO. OHIO. P.K.'S 12' N.E. & S.E. STONE IS 6.7' WEST OF WEST EDGE 15' POST  
 19.05' N.N.E. TO  $\frac{5}{8}$ " X 30" LG. IRON PIN @ WEST EDGE PAVEMENT (PLUMBED)  
 37.68' S.E. TO  $\frac{5}{8}$ " X 30" LG. IRON PIN @ EAST EDGE PAVEMENT (PLUMBED)  
 35.57' S.W. TO  $\frac{5}{8}$ " X 30" LG. IRON PIN ON WEST DITCH BANK  
 51.43' S. TO  $\frac{1}{4}$ " POST, SEC. 25; RICHFIELD TWP, HENRY CO.