

O.D.O.T. DISTRICT 2 SURVEY OFFICE (USE ONLY)

PERSONNEL

REFERENCE NO. 9 A

SHEET 13 OF 15

NOTES NIESE

DATE 2/15/23

ROUTE SR 281

H.C. AUBLE

WEATHER WINDY

COUNTY WOOD

R.C. MILLER

TEMP. 61°

TOWNSHIP MILTON

SECTION 22

DWG BY RHOADES

PID CHIP SEAL

T 4 N R 9 E

TYPE MONUMENT MAG SHANK

ON SURFACE - ~~BELOW~~ ON

OFFSET ☉ PAVEMENT 3.5' ~~±~~ : RT

7.1' TO RT EDGE PAVEMENT

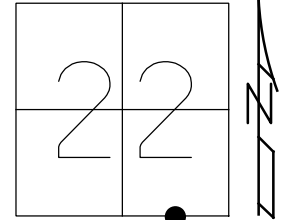
STATION: 199+67

HORIZ.DATUM: NAD83 2011

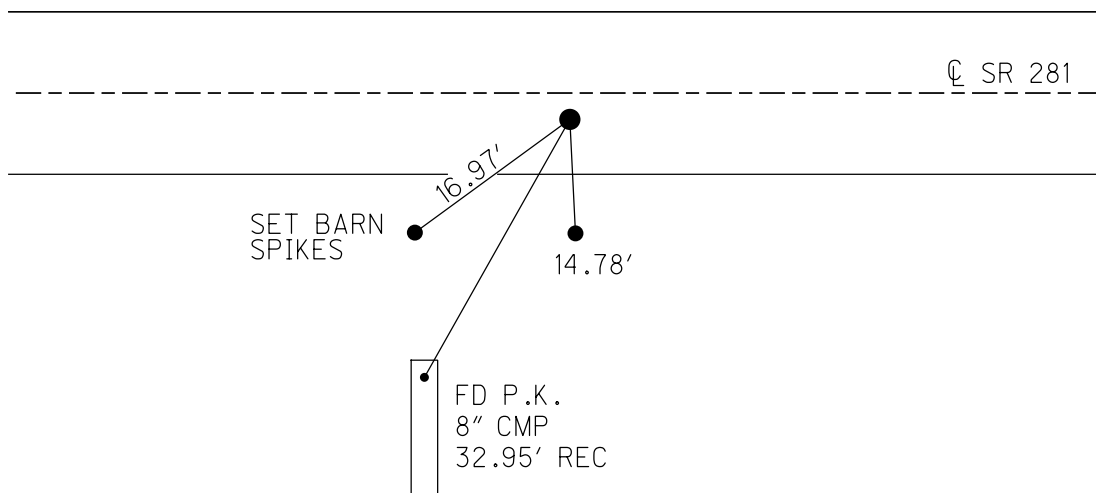
GEOID: NAVD88 2018

GRID: NORTHING: 592128.386

EASTING: 1608464.405



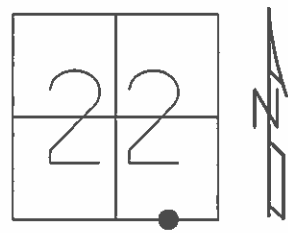
RECORD:
 STA. 198+62.6
 FD STONE
 SET BOAT SPIKE
 1959
 FD P.K./WASHER
 5/23/90, MB
 SET SM.R.R.SPIKE
 6/19/90, MB
 FD P.K./WASHER
 7/2/12, DCH
 SET MAG/WASHER
 NEWREFA10
 9/26/12, DCH
 FD MAG SHANK
 REFA9
 7/15/22,
 2/15/23, DSA



O.D.O.T. DISTRICT 2 SURVEY OFFICE (USE ONLY)

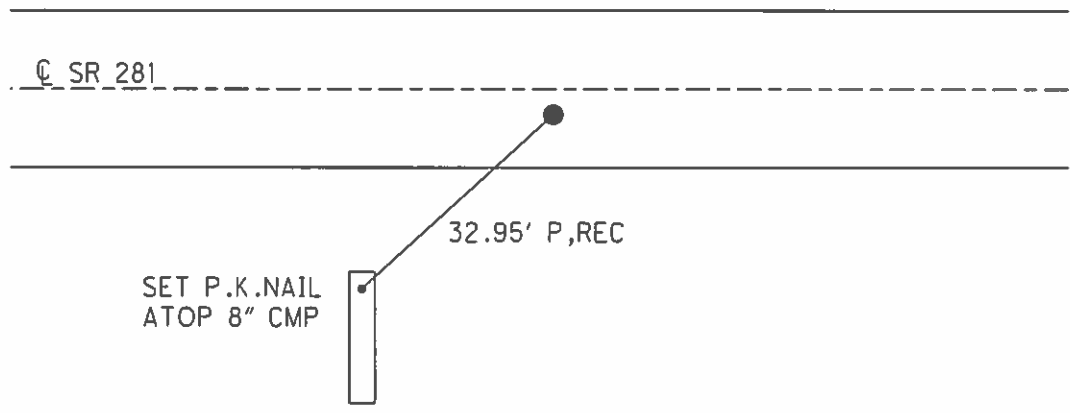
PERSONNEL _____ REFERENCE NO. 9 A SHEET 13 OF 15
 NOTES HOMAN DATE 7/3/12 ROUTE SR 281
 H.C. ROUSOS WEATHER CLOUDY COUNTY WOOD
 R.C. COUTCHER TEMP. 75° TOWNSHIP MILTON
HARBAUGH SECTION 22
T 4 N R 9 E

TYPE MONUMENT P.K./WASHER
 ON SURFACE - ~~BELOW~~ ON
~~LEFT~~ - ℄ PAV'T - RIGHT 3.5'
7.1' TO RT EDGE PAVEMENT
 S.L.M. 199+67



GRID: NORTHING: 592128.456 EASTING: 1608464.363

- RECORD:
 STA. 198+62.6
 1959 DIG, FD STONE,
 SET BOAT SPIKE
- FD P.K./WASHER
 5/23/90, MB
- SET SM.R.R.SPIKE
 6/19/90, MB
- FD P.K./WASHER
 7/2/12, DCH
- SET MAG/WASHER
 GPS, NEWREFA10
 9/26/12, DCH



O.D.O.T. DISTRICT 2 SURVEY OFFICE

PERSONNEL _____

REFERENCE NO. 9 A

SHEET _____ OF _____

NOTES BARNHISEL

H.C. " "

DATE 5-23-90

ROUTE 281

R.C. HOFFMAN

WEATHER SUNNY

COUNTY Woods

TEMP. +65°

TOWNSHIP Milton

SECTION 22

T 4 R 9 E

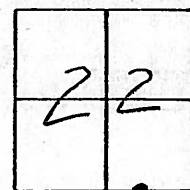
TYPE MONUMENT P.K. & Washer

ON SURFACE - BELOW yes

LEFT - & PAV'T. - RIGHT 3.5

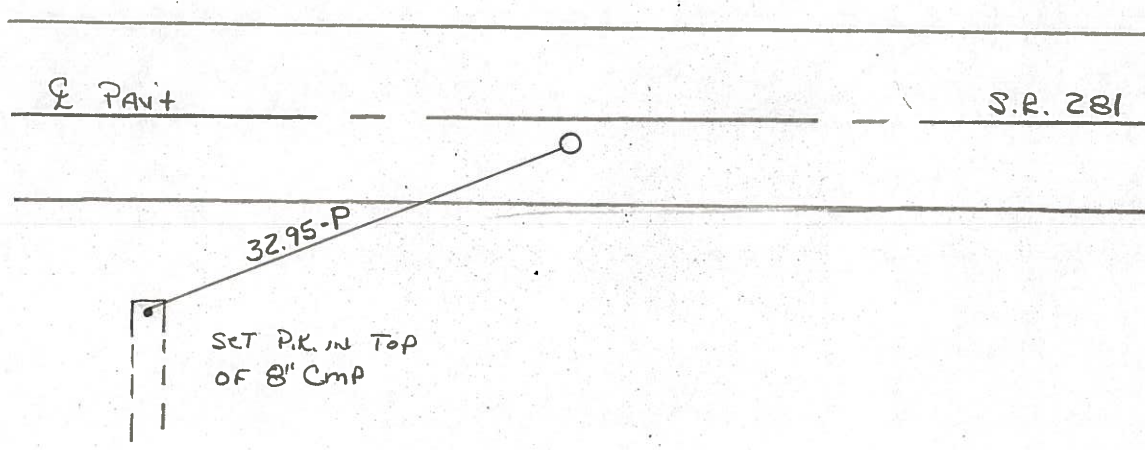
7.1 TO RT EDGE PAVEMENT

S.L.M. 199 + 67



RECORD:
 STA: 198 + 62.6
 No X
 1959 - Dig & Fd STONE,
 Set Boat Spk

Set Sm RR Spk
 6-19-90
 MB



Q.D.O.T. DISTRICT 2 SURVEY OFFICE

Sht. ___ of ___

County Wood S.R. 281

Date 5-20-81

Township MILTON

Weather Clear

Section 22

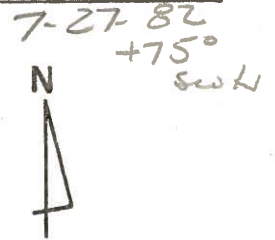
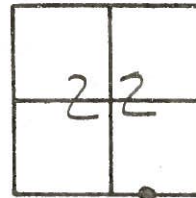
Temp. 60°

T4N, R9E

Personnel S. Hoffmann

C. Loehrke

J. Householder



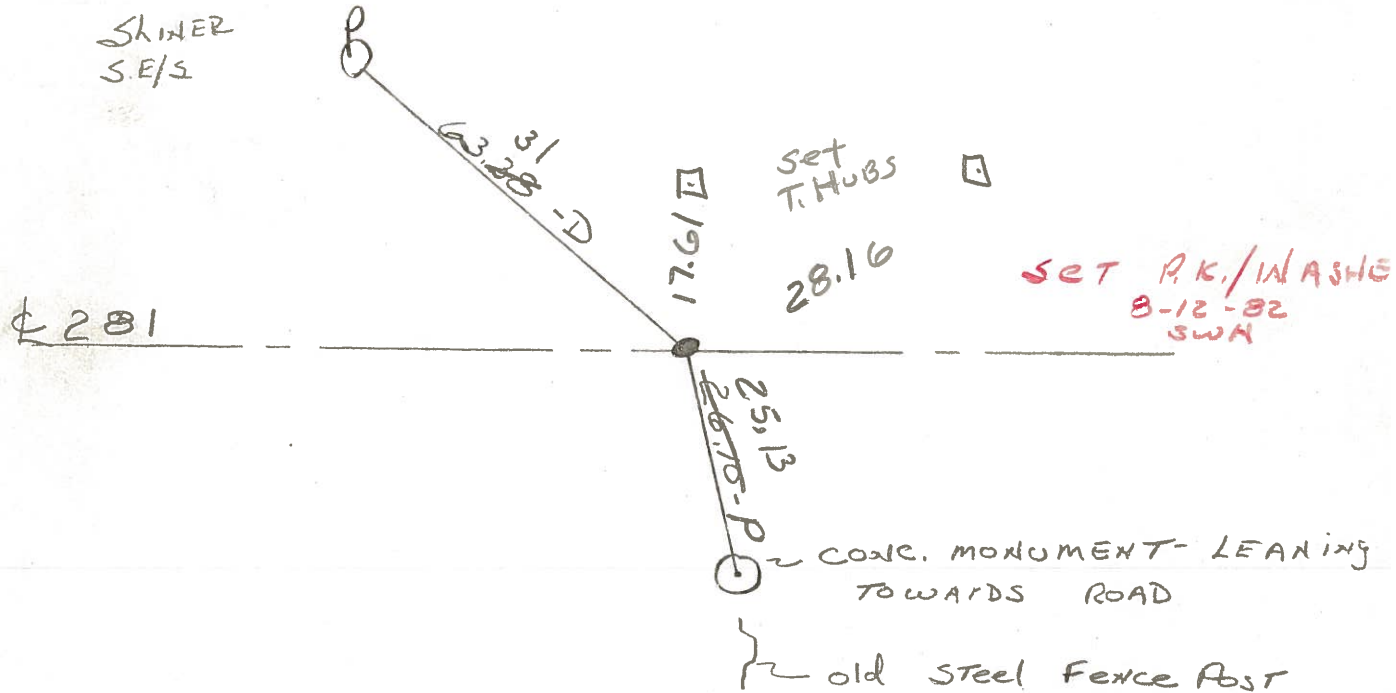
#9-A

SLM 199+94

3.4 sup & post
 12.6 TO NEP
 5.7 TO SEP

STA. 198+62.6

No 4 1959-DUG &
 FOUND STONE, SET
 BOAT SPK.



Q.D.O.T. DISTRICT 2 SURVEY OFFICE

Sht. ___ of ___

OK 7-27-82 -75°-S.W.H.

County Wood S.R. 281

Date 5-20-81

Township Milton

Weather Clear

Section 22

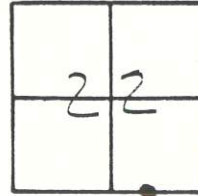
Temp. 60°

T4N, R9E

Personnel S. Hoffman

C. Loehrke

J. Householder



#9-A

STA. 198+62.6

NO ∇ 1959-DUG &
FOUND STONE, SET
BOAT SPK.
3.4 S. OF ∇ PWT.

SET P.K. & WASHER
8-12-82
S.W.H.

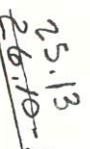
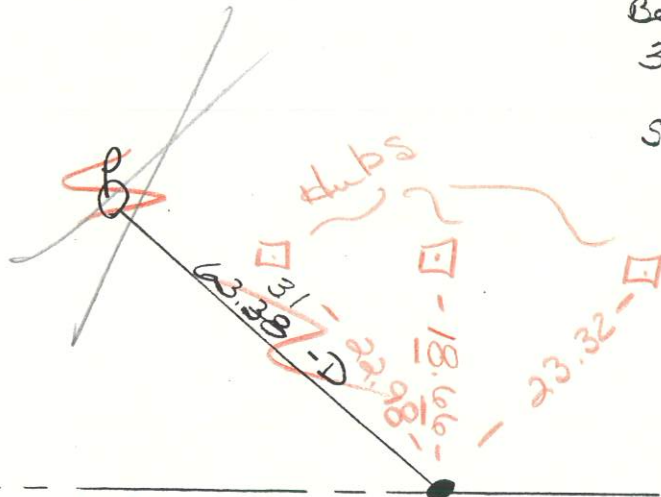
SKINER
S.E/3

∇ 281

P.K. & Washer
199+67

3.5 RT ∇
7.1 TO RT ∇

|| SET P.K.
|| IN 8" CMP



CONC. MONUMENT - LEANING
TOWARDS ROAD

old Steel Fence Post

QD.O.T. DISTRICT 2 SURVEY OFFICE

Sht. ___ of ___

OK 7-27-82 -75°-S.W.H.

County Wood S.R. 281

Date 5-20-81

Township MILTON

Weather clear

Section 22

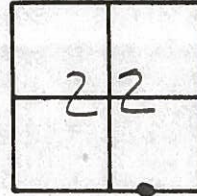
Temp. 60°

T4N, R9E

Personnel S. Hoffman

C. Loehrke

L. Householder



#9-A

STA. 198 + 62.6

NO. 4 1959-DUG &

FOUND STONE, SET

BOAT SPK.

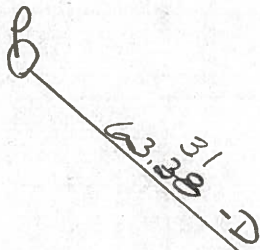
3.4' S. OF & PWT.

SET P.K. & WASHER

8-12-82

S.W.H.

SKINER
S.E/2



& 281



CONC. MONUMENT - LEANING
TOWARDS ROAD

old steel fence post

PERSONNEL TITLE PERSONNEL TITLE COUNTY Wood DATE OK-11-18-70
CK. BY _____ S. R. #281 WEATHER _____
SILVESTER _____ SEC. 22 TEMP. _____
BURNSIDE _____
SMITH _____

DESCRIPTION CONTROL TIES JOB NO. _____
 LEFT CENTER LINE RIGHT

<p>STA. 198+62.6 S.E. 1/4 Post SEC. 22 MILTON TWP. NO ANGLE 1959 DUG & FD. STONE SET BOAT SPIKE</p> <p>#151-A</p>	<p>#9-A</p>	<p>CONC. MON. N.N.E. 26.62^(P) SHINER P. POLE N.W. 63.4 CONC. MON. S.E. 47.32 NEAR EDGE METAL SIGN POST S. 26.54</p>
<p>STA. 135+28.39 S 1/4 Post SEC. 22 MILTON TWP. Δ = 0° - 18' RT. BOAT SPIKE</p> <p>#151</p>	<p>#9</p>	<p>"X"-S. END 60" CONC. PIPE S.S.E. 26.7^(P) SHINER GUARD RAIL POST S.E. 31.0 SHINER GUARD RAIL POST N.E. 32.3 SHINER GUARD RAIL POST N. 17.9 "X"-N. END 60" CONC. PIPE N.N.E. 29.8^(P) "X"-NEAR TOP RETAINING WALL S.E. 33.0^(P) SHINER GUARD RAIL POST S.W. 18.3</p>

PERSONNEL TITLE PERSONNEL TITLE

COUNTY Wood

DATE 12-4-57

S. R. #281

6-27-58

WEATHER 7-24-59

Sworden 3-22-60

SEC.

Sylvester 2-28-64

TEMP.

DESCRIPTION

LEFT

CENTER LINE

RIGHT

JOB NO.

Sta. 193+62.6		Set conc. Post N.N.E.	26.6
S.E. 1/4 post sec. 22	1960	Shiner in cor. post N.	26.1
Milton Twp.	(Fd P.K.)	Shiner in P.P. N.W.	63.41 63.1
No Angle Pl.		Set conc. Post S.E.	47.3

1959 Dug & Fd. Stone #151-A

9-A

Sta. 211+96.5		N. To Tacked Hub	300'
S.W. cor. sec. 23 Milton		S. To Shiner	300'
Twp. Set E.E. Spk.		S.E. "X" cut in East end 42" Pipe	(Plumbed) 63.6
Weston Rd.		N.W. "X" cut in N. end 60" Pipe	(Plumbed) 60.5
$\Delta = 0^\circ - 31' Lt.$		S.W. "X" cut in N.E. Cor. C.B. Top	(Plumbed) 38.15

10

#152

Sta. 238+39.4		Shiner in P.P. N.	30.1
S. 1/4 post sec. 23 Milton		Shiner in T.P. S.	29.29' 29.1
Twp. (Fd 1/2" Iron Rod)	(Fd. P.K.)	Face iron sign post S.S.W.	45.1
P.L. $\Delta = 1^\circ - 14' Rt.$			
13' S. of N. edge of pav't.			

11

#153

Note: For S.E. cor. sec. 23 Milton Twp. see point #75 S.H. 899, sec. A.