

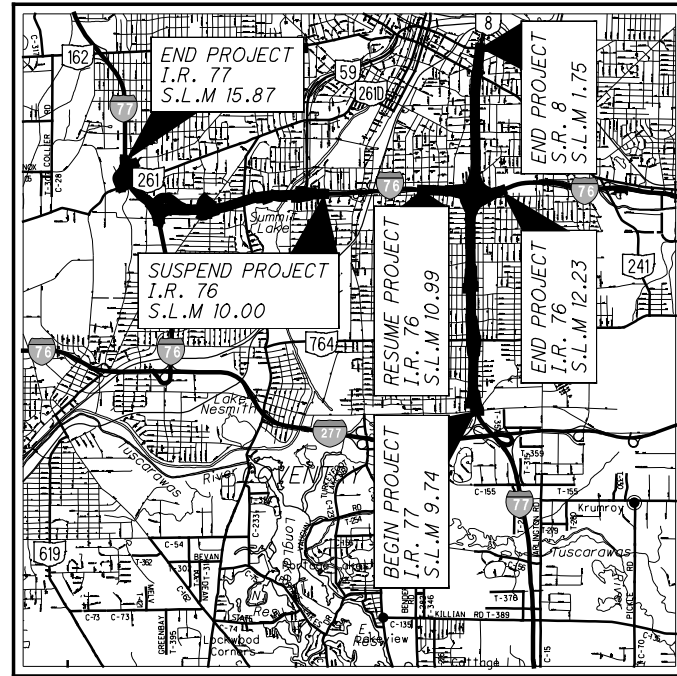
Released for Construction
 Thomas J Powell, PE
 05/20/2021

ISSUE RECORD:		
NO.	DATE	DESCRIPTION

STATE OF OHIO
 DEPARTMENT OF TRANSPORTATION

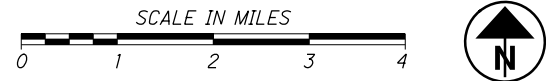
SUM-76-8.24
SUM-77-9.74
SUM-8-0.00

CITY OF AKRON
SUMMIT COUNTY



LOCATION MAP

LATITUDE: 41° 03' 43" LONGITUDE: 81° 30' 17"



- PORTION TO BE IMPROVED -----
- INTERSTATE HIGHWAY -----
- FEDERAL ROUTES -----
- STATE ROUTES -----
- COUNTY & TOWNSHIP ROADS -----
- OTHER ROADS -----

DESIGN DESIGNATION

SEE ROADWAY PLANS

DESIGN EXCEPTIONS

SEE ROADWAY PLANS

UNDERGROUND UTILITIES
 Contact Two Working Days
 Before You Dig

OHIO811, 8-1-1, or 1-800-362-2764
 (Non-members must be called directly)

PLAN PREPARED BY:

ENGINEERS SEAL:

SIGNED:
 DATE: 4/18/2021

INDEX OF SHEETS:

TITLE SHEET	1
REMOVAL PLAN - I.R. 77/I.R. 76	2-4

STANDARD CONSTRUCTION DRAWINGS				SUPPLEMENTAL SPECIFICATIONS	SPECIAL PROVISIONS

PROJECT DESCRIPTION

PAVEMENT REPLACEMENT OVER SUM - I.R. 76 FROM S.L.M. 8.24 TO 10.00, SUM - 77 FROM S.L.M. 9.74 TO 11.54, AND SUM - 8 FROM S.L.M. 0.00 TO 1.75. COVERS THE "SOUTH LEG" AND "WEST LEG", INCLUDES REHABILITATION OF SEVERAL STRUCTURES IN THE CITY OF AKRON, SUMMIT COUNTY, OHIO.

LIMITED ACCESS

THIS IMPROVEMENT IS ESPECIALLY DESIGNED FOR THROUGH TRAFFIC AND HAS BEEN DECLARED A LIMITED ACCESS HIGHWAY OR FREEWAY BY ACTION OF THE DIRECTOR IN ACCORDANCE WITH THE PROVISIONS OF SECTION 5511.02 OF THE OHIO REVISED CODE.

2019 SPECIFICATIONS

THE STANDARD SPECIFICATIONS OF THE STATE OF OHIO, DEPARTMENT OF TRANSPORTATION, INCLUDING SUPPLEMENTAL SPECIFICATIONS LISTED IN THE PLANS AND CHANGES LISTED IN THE PROPOSAL SHALL GOVERN THIS IMPROVEMENT.

BU-24
REMOVALS
 I-77 at V Odom Blvd. to
 I-76/77 at East Ave.
 RELEASED FOR
 CONSTRUCTION
 April 19, 2021

FEDERAL PROJECT NO.
E180(428)

PID NO.
102329

CONSTRUCTION PROJECT NO.
21-3000

RAILROAD INVOLVEMENT
NONE

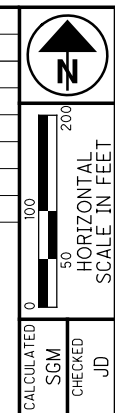
SUM-76 / 77 / 8-
 8.24 / 9.74 / 0.00

1
 4

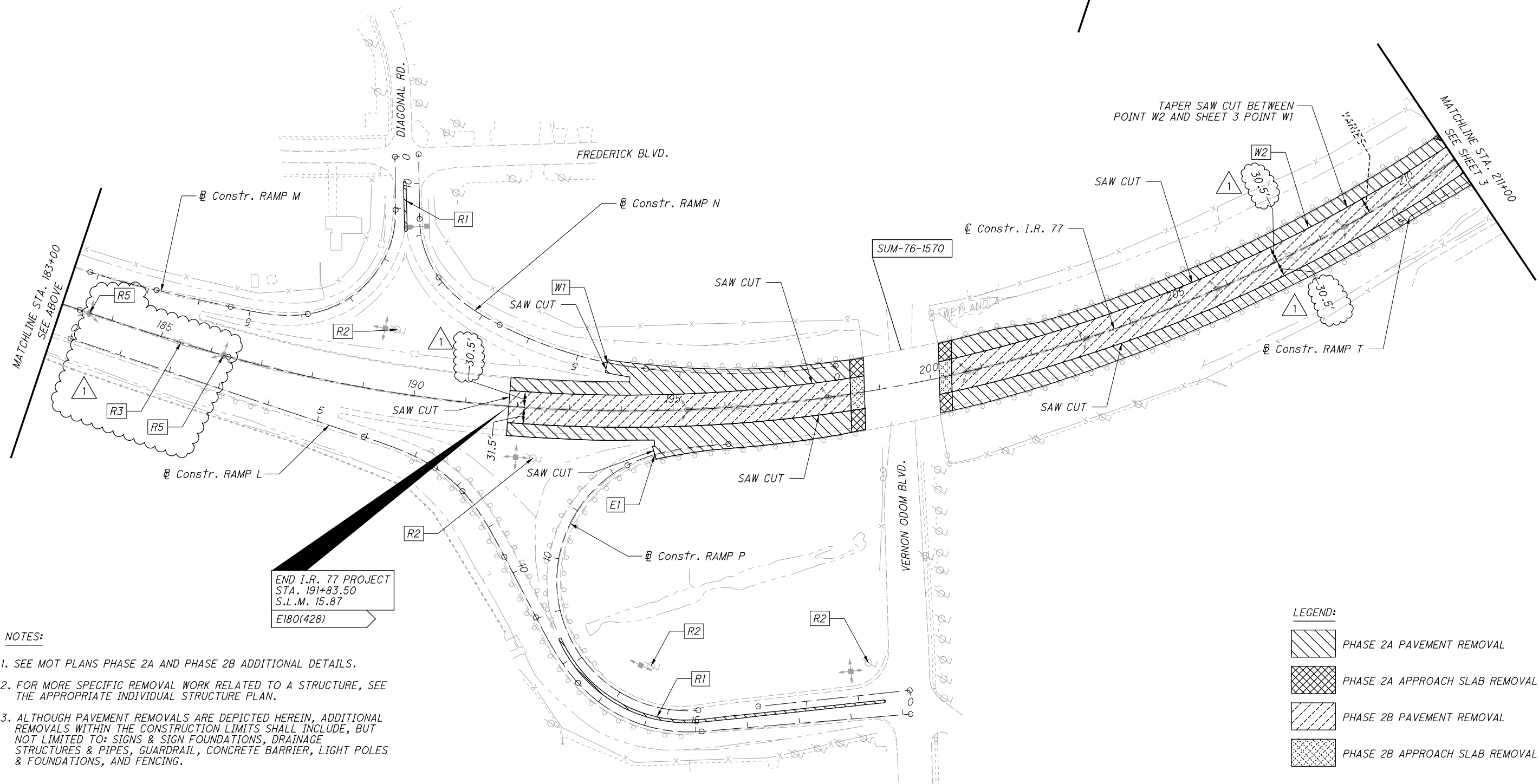
PARSONS
 pw:\VANVA01P\WINT01\parsons.com:Ohio State Documents\DB-Akron Beltway Rehab\10 - Design\102329\Roadway\Rehab\BU-24\102329_CM101.dgn Sheet 5/19/2021 10:03:57 AM p007870A

Released for Construction
 Thomas J Powell, PE
 05/20/2021

ISSUE RECORD:		
NO.	DATE	DESCRIPTION
1	05/18/21	ADDITIONAL LIGHTING AND SAWCUT DIMENSION



- W1 STA. 4+41.25 (RAMP N)
- W2 STA. 207+88.7±, 31.5' LT
- E1 STA. 12+88.10 (RAMP P)
- R1 SAWCUT & REMOVE EXISTING CURBED MEDIAN (SAWCUT AT THE FACE OF CURB)
- R2 REMOVE HIGH MAST LIGHTING TOWER INCLUDING FOUNDATION
- R3 REMOVE HIGH MAST LIGHTING TOWER (MEDIAN BARRIER AND FOUNDATION TO REMAIN)
- R4 REMOVE COBRA HEAD LIGHT POLE (MEDIAN BARRIER AND FOUNDATION TO REMAIN)
- R5 REMOVE 8' OF MEDIAN BARRIER FOR NEW MEDIAN MOUNTED LIGHT POLE
- R6 REMOVE COBRA HEAD LIGHT POLE AND 8' OF MEDIAN BARRIER, INCLUDING LIGHT POLE FOUNDATION, FOR NEW MEDIAN MOUNTED LIGHT POLE



- NOTES:**
- SEE MOT PLANS PHASE 2A AND PHASE 2B ADDITIONAL DETAILS.
 - FOR MORE SPECIFIC REMOVAL WORK RELATED TO A STRUCTURE, SEE THE APPROPRIATE INDIVIDUAL STRUCTURE PLAN.
 - ALTHOUGH PAVEMENT REMOVALS ARE DEPICTED HEREIN, ADDITIONAL REMOVALS WITHIN THE CONSTRUCTION LIMITS SHALL INCLUDE, BUT NOT LIMITED TO: SIGNS & SIGN FOUNDATIONS, DRAINAGE STRUCTURES & PIPES, GUARDRAIL, CONCRETE BARRIER, LIGHT POLES & FOUNDATIONS, AND FENCING.

END I.R. 77 PROJECT
 STA. 191+83.50
 S.L.M. 15.87
 E180(428)

LEGEND:

	PHASE 2A PAVEMENT REMOVAL
	PHASE 2A APPROACH SLAB REMOVAL
	PHASE 2B PAVEMENT REMOVAL
	PHASE 2B APPROACH SLAB REMOVAL

REMOVAL PLAN - I.R. 77
END I.R. 77 PROJECT TO STA. 211+00

SUM-76/77/8-
8.24/9.74/0.00

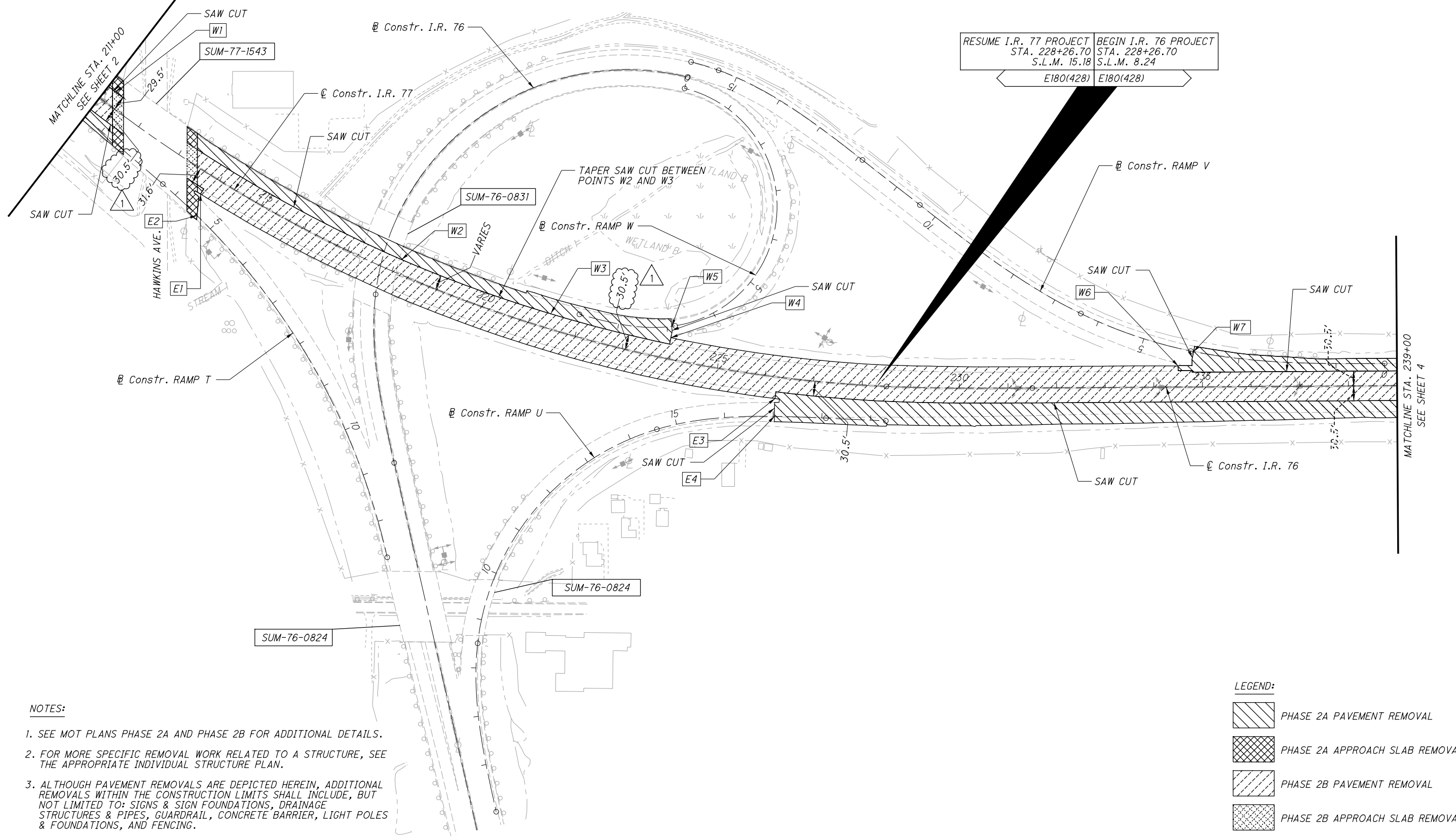
2
 4

PARSONS
 pw:\V\ANV\A01P\W\NT01\parsons.com:Ohio State\Documents\DB-Akron Beltway Rehab\10 - Design\102329\Roadway\Sheets\BU-24\102329_CM102.dgn Sheet 5/19/2021 10:04:03 AM p007870A

Released for Construction
 Thomas J Powell, PE
 05/20/2021

ISSUE RECORD:		
NO.	DATE	DESCRIPTION
1	05/18/21	ADDITIONAL LIGHTING AND SAWCUT DIMENSION

- | | | | |
|----|--------------------------|----|------------------------|
| W1 | STA. 211+18.7±, 29.5' LT | E1 | STA. 213+81.1± |
| W2 | STA. 218+09.1±, 29.5' LT | E2 | STA. 4+61.59 (RAMP T) |
| W3 | STA. 221+39.1±, 31.5' LT | E3 | STA. 226+25.6± |
| W4 | STA. 223+93.3± | E4 | STA. 17+02.36 (RAMP U) |
| W5 | STA. 6+90.18 (RAMP W) | | |
| W6 | STA. 234+49.6± | | |
| W7 | STA. 3+94.29 (RAMP V) | | |



RESUME I.R. 77 PROJECT
 STA. 228+26.70
 S.L.M. 15.18
 E180(428)

BEGIN I.R. 76 PROJECT
 STA. 228+26.70
 S.L.M. 8.24
 E180(428)

- NOTES:**
- SEE MOT PLANS PHASE 2A AND PHASE 2B FOR ADDITIONAL DETAILS.
 - FOR MORE SPECIFIC REMOVAL WORK RELATED TO A STRUCTURE, SEE THE APPROPRIATE INDIVIDUAL STRUCTURE PLAN.
 - ALTHOUGH PAVEMENT REMOVALS ARE DEPICTED HEREIN, ADDITIONAL REMOVALS WITHIN THE CONSTRUCTION LIMITS SHALL INCLUDE, BUT NOT LIMITED TO: SIGNS & SIGN FOUNDATIONS, DRAINAGE STRUCTURES & PIPES, GUARDRAIL, CONCRETE BARRIER, LIGHT POLES & FOUNDATIONS, AND FENCING.

LEGEND:

	PHASE 2A PAVEMENT REMOVAL
	PHASE 2A APPROACH SLAB REMOVAL
	PHASE 2B PAVEMENT REMOVAL
	PHASE 2B APPROACH SLAB REMOVAL

HORIZONTAL SCALE IN FEET

CALCULATED	SGM	CHECKED	JD
------------	-----	---------	----

REMOVAL PLAN - I.R. 77 / I.R. 76
STA. 211+00 TO STA. 239+00

SUM-76 / 77 / 8-
8.24 / 9.74 / 0.00

3
4

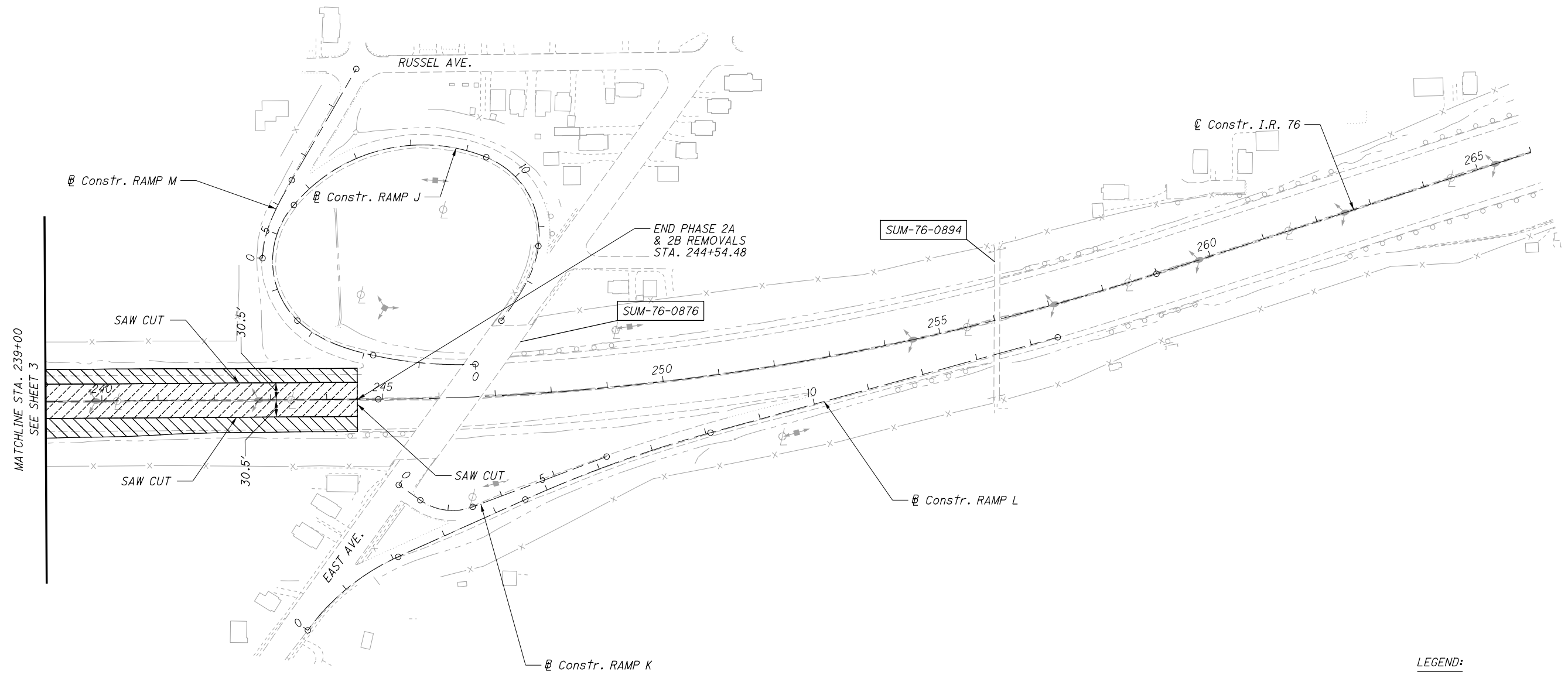
PARSONS
 p:\V\ANVA01PWINT01.parsons.com:Ohio State\Documents\DB-Akron Beltway Rehab\10 - Design\102329\Roadway\Rehab\BU-24\102329_CM103A.dgn Sheet 4/18/2021 5:11:11 PM p007870A

Released for Construction
 Thomas J Powell, PE
 05/20/2021

ISSUE RECORD:		
NO.	DATE	DESCRIPTION

CALCULATED SGM CHECKED JD

HORIZONTAL SCALE IN FEET



NOTES:

1. SEE MOT PLANS PHASE 2A AND PHASE 2B FOR ADDITIONAL DETAILS.
2. FOR MORE SPECIFIC REMOVAL WORK RELATED TO A STRUCTURE, SEE THE APPROPRIATE INDIVIDUAL STRUCTURE PLAN.
3. ALTHOUGH PAVEMENT REMOVALS ARE DEPICTED HEREIN, ADDITIONAL REMOVALS WITHIN THE CONSTRUCTION LIMITS SHALL INCLUDE, BUT NOT LIMITED TO: SIGNS & SIGN FOUNDATIONS, DRAINAGE STRUCTURES & PIPES, GUARDRAIL, CONCRETE BARRIER, LIGHT POLES & FOUNDATIONS, AND FENCING.

LEGEND:

- PHASE 2A PAVEMENT REMOVAL
- PHASE 2A APPROACH SLAB REMOVAL
- PHASE 2B PAVEMENT REMOVAL
- PHASE 2B APPROACH SLAB REMOVAL

REMOVAL PLAN - I.R. 76
 STA. 239+00 TO STA. 244+54.48

SUM-76/77/8-
 8.24/9.74/0.00

4
 4